



*Herb W. Joesting*





Passenger will please write full selection on check to facilitate prompt service



*Seventy-five Cents*

(600) Baked Individual Chicken Pie  
(Great Northern Style)

(340) Hot Bread and Butter—Coffee, Tea or (150) Milk

Chicken Pie is a specialty with the Great Northern Railway, and is ready to serve in the Dining Car at lunch and dinner on every train every day throughout the year. Made with plenty of chicken (bones omitted), potatoes, thick, rich chicken roux and—here's the secret—Bacon Crisps. Top all with a crown of golden brown flaky crust—baked just right—served red hot.

*Seventy-five Cents*

Great Northern Vegetable Dinner

(300) Vegetable Omelet

(200-400) Assorted Seasonable Vegetables

(340) Bread and Butter

Coffee, Tea or (150) Milk



*Seventy-five Cents*

Great Northern Fish Dinner

(400-500) Fresh, Seasonable Fish

(200-400) Potatoes

(340) Bread and Butter

Coffee, Tea or (150) Milk



A service that is courteous and dependable. Suggestions for betterment invited

J. A. BLAIR

GENERAL SUPERINTENDENT DINING CARS

ST. PAUL, MINNESOTA

Upon request steward will furnish mailing envelope for this menu.  
To Mothers—Send the baby's bottle to the dining car to be sterilized and filled.

**eat Wenatchee Apples**



# fat Wenatchee Apples

FIGURES IN RED DENOTE NUMBER OF CALORIES IN PORTION AS SERVED

## A La Carte

### RELISH

(375) HEAD LETTUCE, GREAT NORTHERN	35	(25) RADISHES	20
DRESSING	35	(125) GREEN OLIVES	25
(100) SLICED TOMATOES	35	(120) SELECTED RIPE OLIVES	25
(10) CELERY	30	(15) MIXED PICKLES	25
(18) CUCUMBERS	35	(5) CHOW CHOW	25
(15) YOUNG ONIONS	20	(10) PICKLED ONIONS	25

### SOUP

SOUP EN CUP	20	TUREEN	30
(See Regular Lunch and Dinner Menu)			

### FISH

FRESH SEASONABLE FISH	70	(500) IMPORTED SARDINES	60
-----------------------	----	-------------------------	----

### EGGS AND OMELETS

(150) BOILED (220) FRIED OR		(300) POACHED ON TOAST (2)	50
(240) SCRAMBLED (2)	35	(360-400) HAM OR JELLY OMELET	65
(260) PLAIN OMELET	45		

### MEATS

(800) SIRLOIN STEAK, GRILLED TO ORDER	1 50	(600) BOILED HAM	80
(325) BROILED MILK FED SPRING CHICKEN (HALF)	1 10	(500) BOILED OX TONGUE	80
(1061) WILLOW BROOK SAUSAGE	70	(1242) PORK CHOPS (2)	80
(500) ASSORTED COLD MEATS—POTATO SALAD	80	(450) LAMB CHOPS (2)	80
		(660-395) HAM OR BACON AND EGGS	70
		(650-300) HAM OR BACON	70

### VEGETABLES

475) GREAT NORTHERN BAKED BEANS AND BROWN BREAD	45	(60) ASPARAGUS	45
(300) AMERICAN, FRENCH FRIED OR HASHED BROWN POTATOES (250)	25	(110) JUNE PEAS	20
		(130) SWEET CORN	20
		(75) SPINACH	20

### SALADS

(450) LETTUCE AND TOMATO, G. N. SPECIAL DRESSING	50	(600) CHICKEN, MAYONNAISE	75
(125) ORANGE AND LETTUCE	50	(400) POTATO, MAYONNAISE	25

### DESSERTS

(100) WENATCHEE EATING APPLE	10		
(340) BAKED WENATCHEE APPLE, CREAM	30	(100-200) GRAPE FRUIT (HALF 20) WHOLE	35
(350) PIE WITH CHEESE, BAKED TODAY ON THIS CAR	25	(400) INDIVIDUAL PRESERVED FIGS WITH CREAM	40
(200) ORANGE OR GRAPE FRUIT MAR-MALADE	25	(300) WASH.-ORE. STEWED PRUNES-CREAM	30
(200) STRAWBERRY, RASPBERRY OR LOGANBERRY PRESERVES	30	(300) WASH.-ORE. FRESH PRUNES-CREAM	30
(200) PEACH OR APRICOT PRESERVES	25	(135) INDIVIDUAL HONEY	25
		(250) CAKE	20
		(240) SWEET WAFERS	10
		(175) ICE CREAM	25

### CHEESE

(WITH TOASTED CRACKERS)

(250) SWISS CHEESE (IMPORTED)	35	(240) FULL CREAM CHEESE	25
(210) ROQUEFORT CHEESE (IMPORTED)	35		

### BREAD

DRY OR BUTTERED TOAST (350)	15	(495) FRENCH TOAST, JELLY OR MAPLE SYRUP	45
MILK TOAST	30	(250) ASSORTED BREAD	10
CREAM TOAST	45		
(200) HOT BREAD	10		

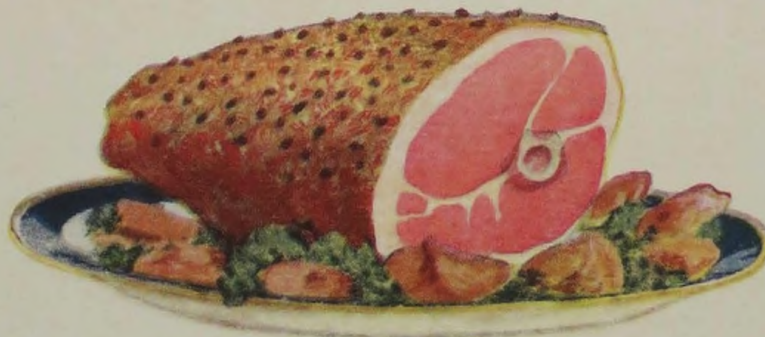
### BEVERAGES

(50) PHEASANT LOGANBERRY HI-BALL	20	(150) INDIVIDUAL BOTTLE MILK	15
COFFEE, POT	20	(220) MALTED MILK	20
TEA OR POSTUM, POT	20	(400-440) COCOA OR CHOCOLATE, POT	20

Hot Breads and Pastries served are baked fresh on this car daily

Seventy-five Cents

(800) Baked Smoked Ham, Great Northern Sauce  
(200-400) Sweet Potatoes (340) Bread and Butter Coffee, Tea or (150) Milk



EMPLOYEES ARE FORBIDDEN TO ACCEPT OR SERVE VERBAL ORDERS



# GREAT NORTHERN

## *Achievement*

**T**HE founder of this railroad system left it a heritage—high standards of public service. That these standards may be maintained, the railroad is providing the best possible physical equipment, and an army of 30,000 employes, proud of the Great Northern legacy, are giving loyal, intelligent service.

The Great Northern has spent and is spending annually millions of dollars to improve its lines. Today it has the longest uninterrupted automatic electric block signal system in the United States; 110-pound steel is the standard on the right-of-way, 130-pound on curves; grades have been reduced, bridges rebuilt and curves eliminated. Its motive power and rolling stock is the finest railroad equipment in the American Northwest. Now a new tunnel seven and three-quarters miles long is being driven through the Cascades at a cost of \$10,000,000. When completed and electrified it will reduce the system mileage by eight miles and lower the altitude at which the Cascades are crossed by 500 feet.

Excellence of physical equipment, records of splendid performance in the past and confidence in looking to the future have inspired men, proud of membership in the Great Northern organization, to give faithful service year after year. Determined adherence to high standards has made the Great Northern

### *A Dependable Railway*