



Anniversary
of the
NEW ORIENTAL
LIMITED

Entire equipment
fresh from the
Pullman Shops

Finest train to
or from the
Pacific Northwest



Anniversary
of the
New Oriental Limited

Entire Equipment Fresh from
the Pullman Shops

*Finest Train to and from the
Pacific Northwest*



The compartments are attractive and restful



The permanent headboards insure privacy and prevent drafts



The berths are wide and roomy and conducive to sleep

THE anniversary of the New Oriental Limited marks not the end but the beginning of another period of increasing admiration on the part of the traveling public for this all-steel train.

Designated as the finest train to or from the Pacific Northwest, its splendid equipment and de luxe service are a constant source of delighted spoken and written comment from thousands of transcontinental travelers.

Indeed, it is not surprising that Oriental Limited patrons voice their appreciation so enthusiastically. The restful grey-green decoration throughout the train, the women's lounging room, the separate shower baths for women, also for men, the new type sleeping cars with permanent headboards

between sections, affording passengers almost the privacy of separate compartments and protection against drafts, the men's roomy smoking and club sections and the handsome observation parlor with extra high windows and spacious observation end, its complete library, magazines, newspapers, wired news and stock reports, four o'clock tea enroute and local or long distance phone service to the train at terminals, all have created a lasting, favorable impression on those who have experienced their comfort or convenience.

Another important factor, contributing to the success of this remarkable train, is its personnel, the ladies' maid, manicurist and hair-dresser; the barber and valet, as well as the entire crew of courteous, efficient men.





The serving of four o'clock tea is a pleasing afternoon function



The nursemaid is a boon to mothers and a delight to children



The high windows in the observation car permit an unrestricted outlook

The handsomely decorated dining cars, embodying all the service features of the best metropolitan restaurants, have been the source of much favorable comment on the part of even the most blasé travelers.

Another innovation in train equipment is the special quarters with shower bath in the forward part of the train for the dining car crew which accounts for their alert, spick and span appearance.

The many unusual features of this splendid train, combined with the fact that its route is through some of the finest mountain scenery in all America, past the rugged grandeur of Glacier Park and through the mighty Cascades of Washington, have made the New Oriental Limited an extremely popular transcontinental train.



The patrons of the New Oriental Limited can hardly realize the painstaking care expended in maintaining the high degree of efficiency and comfort which has always been the standard of this most modern train.

Periodically, the entire equipment is returned to the Pullman shops to be completely renovated and redecorated. Various improvements evolved by the Pullman designers are made at such times in order that the train may be absolutely modern in every detail and fully deserving of the title "The New Oriental Limited".

The dining cars are under the supervision of the commissary department and commissaries located in Saint Paul, Minnesota and Seattle, Washington supply these diners with everything in the way of food, linens, tableware

Passengers are respectfully requested to write full order on check.



Seventy-five Cents

Baked Individual Chicken Pie
(Great Northern Style)

Hot Bread and Butter—Coffee, Tea or Milk

Chicken Pie is a specialty with the Great Northern Railway, and is ready to serve in the Dining Car at lunch and dinner on every train every day throughout the year. Made with plenty of chicken (bones omitted), potatoes, thick, rich chicken roux and—here's the secret—Bacon Crisps. Top all with a crown of golden brown flaky crust—baked just right—served red hot.

Seventy-five Cents

Great Northern Vegetable Dinner

Vegetable Omelet

Assorted Seasonable Vegetables
Coffee, Tea or Milk

Bread and Butter



Seventy-five Cents

Great Northern Fish Dinner

Fresh Seasonable Fish

Potatoes

Bread and Butter

Coffee, Tea or Milk



A service that is courteous and dependable. Suggestions for betterment invited.

J. A. BLAIR
GENERAL SUPERINTENDENT DINING CARS
ST. PAUL, MINNESOTA

Upon request steward will furnish mailing envelope for this menu.
To Mothers—Send the baby's bottle to the dining car to be sterilized and filled.

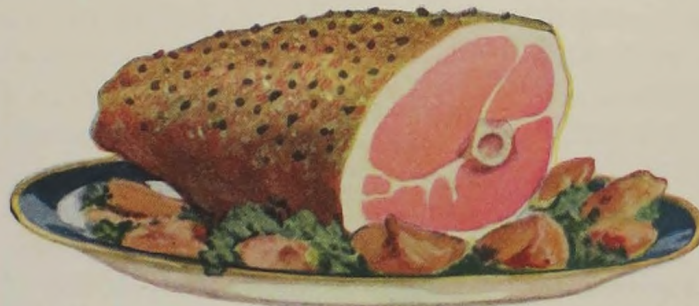
A La Carte

RELISH	
HEAD LETTUCE, GREAT NORTHERN DRESSING.....	35
SLICED TOMATOES.....	35
CELERY.....	30
CUCUMBERS.....	35
YOUNG ONIONS.....	20
RADISHES.....	20
GREEN OLIVES.....	25
SELECTED RIPE OLIVES.....	25
MIXED PICKLES.....	25
CHOW CHOW.....	25
PICKLED ONIONS.....	25
SOUP	
SOUP EN CUP.....	15
(See Regular Lunch and Dinner Menu)	
FISH	
FRESH SEASONABLE FISH.....	70
IMPORTED SARDINES.....	50
EGGS AND OMELETS	
BOILED, FRIED OR SCRAMBLED (2).....	35
POACHED ON TOAST (2).....	50
HAM OR JELLY OMELET.....	65
PLAIN OMELET.....	45
MEATS	
SIRLOIN STEAK, GRILLED TO ORDER.....	1.35
BROILED MILK FED SPRING CHICKEN (HALF).....	90
ASSORTED COLD MEATS—POTATO SALAD.....	80
BOILED HAM.....	80
BOILED OX TONGUE.....	80
LAMB CHOPS (2).....	80
HAM OR BACON AND EGGS.....	70
HAM OR BACON.....	65
VEGETABLES	
GREAT NORTHERN BAKED BEANS AND BROWN BREAD.....	40
AMERICAN, FRENCH FRIED OR HASHED BROWN POTATOES.....	20
ASPARAGUS.....	40
JUNE PEAS.....	20
SWEET CORN.....	20
SPINACH.....	20
SALADS	
LETTUCE AND TOMATO, G. N. SPECIAL DRESSING.....	50
POTATO, MAYONNAISE.....	25
ORANGE AND LETTUCE.....	50
DESSERTS	
BERRIES WITH CREAM.....	35
PIE WITH CHEESE, BAKED TODAY ON THIS CAR.....	20
INDIVIDUAL DEEP FRUIT PIE WITH CREAM.....	35
ORANGE OR GRAPE FRUIT MARMALADE.....	25
STRAWBERRY, RASPBERRY OR LOGANBERRY PRESERVES.....	25
PEACH OR APRICOT PRESERVES.....	25
CANTALOUPE (HALF, 20) WHOLE.....	35
INDIVIDUAL PRESERVED FIGS WITH CREAM.....	40
WASHINGTON-OREGON PRUNES WITH CREAM.....	30
INDIVIDUAL HONEY.....	25
CAKE.....	20
SWEET WAFERS.....	10
ICE CREAM.....	25
CHEESE	
(WITH TOASTED CRACKERS)	
SWISS CHEESE (IMPORTED).....	35
FULL CREAM CHEESE.....	25
ROQUEFORT CHEESE (IMPORTED).....	35
BREAD	
DRY OR BUTTERED TOAST.....	15
MILK TOAST.....	30
CREAM TOAST.....	45
FRENCH TOAST, JELLY OR MAPLE SYRUP.....	45
ASSORTED BREAD.....	10
HOT BREAD.....	10
BEVERAGES	
PHEASANT LOGANBERRY HI-BALL.....	20
INDIVIDUAL BOTTLE MILK.....	15
COFFEE, POT.....	20
MALTED MILK.....	20
TEA OR POSTUM, POT.....	20
COCOA OR CHOCOLATE, POT.....	20

Hot Breads and Pastries served are baked fresh on this car daily.

Seventy-five Cents

Baked Smoked Ham, Great Northern Sauce
Potatoes to Order Bread and Butter Coffee, Tea or Milk



EMPLOYEES ARE FOBIDDEN TO ACCEPT OR SERVE VERBAL ORDERS



*The barber is expert and versed
in the modern modes of
hair trimming*



*The women's shower is an innovation
in train equipment*



*The ladies' maid is expert in
caring for feminine needs*

and cooking equipment. These commissaries are an extremely vital part of the Great Northern system, for through their efficient operation, their refrigeration plants and definitely established sources of supply, the dining car patrons are assured fresh, seasonable fruits, vegetables, sea foods and fish, also meats, poultry and dairy products, as well as the very best of staple groceries.

The coffee served on the dining cars is a blend of the rich, full-flavored coffee from the vicinity of Bogota, South America, toned by lighter coffees from Guatemala and Mexico and rounded out by still another coffee from Brazil.

This blend is the result of innumerable experiments by the department's experts

covering a period of many years, but the flavor obtained has been so conducive of delighted comment from the patrons of the diners, the effort necessary to obtain this perfect coffee has been considered well worth while.

Many of those who are served on the New Oriental Limited diners marvel at the freshness of the rolls, pies and pastries and express surprise when informed that these items are baked fresh for each meal right in the diner's

kitchen. These are but simple illustrations of the care expended in the endeavor to delight the traveler, little things, perhaps, when compared with many of the unusual features of the New Oriental Limited, but strict attention to even the minute details has been responsible for





Perfectly cooked food is correctly served by competent crews on Great Northern diners



Seasonable fruits are served as fresh as though from the garden



Attractive tables and beautiful surroundings add enjoyment to delightful meals

much of this train's extreme popularity.

The comforts of everyone have been considered—men, women and children. For the men, a lounge and smoking room with high, plate glass windows, permitting an unobstructed view on both sides of the train, with sofas and seats accommodating twelve persons, produces all the comforts of an exclusive club. On this train, no man need feel the discomfort of being untidy, with a shower bath for cleanliness and a barber and valet for personal attentions.

For the women, their exclusive lounge room is a new departure. Comfortably and daintily furnished, containing a toilet table with a large mirror and with a shower bath adjoining, attended by a maid who is a com-

petent manicurist and hair-dresser, this lounge has proven a boon to thousands of feminine travelers.

For the children, the attendant in the women's lounge serves as an excellent nursemaid, permitting their mothers occasional moments for relaxation so essential on transcontinental trips.

The New Oriental Limited is indeed a modern hotel with the added advantage that the "guests" sitting at its high, plate glass windows do not have their view confined to a single vista, but instead, as this train hotel moves smoothly along over a well-ballasted roadway, a constantly changing panorama of America's most magnificent scenery is presented and, owing to the perfect comfort of the spectators, fully enjoyed.





From the spick and span commissaries with their orderly efficiency, to the tables of the Great Northern dining cars, every care is taken to insure fresh, clean, attractive food.

The bright commissaries with their white woodwork are like glorified pantries: their well-stocked shelves and large, cold refrigerators holding everything necessary to permit innumerable demonstrations of culinary mastery by the chefs on the Oriental Limited diners.

The tables on the dining cars with their fresh white linens, attractive china and shining silver are perfect settings for the tempting dishes you may order.

The dining car steward is ever ready with courteous suggestions to aid your selections.



A Dependable Railway