

Churches in the Downtown District

All Saints Cathedral (Episcopal) - - - - - 1122 First Ave.
Central Christian Church (Christian) - - - - - Third and Stevens
Central Methodist Church (Methodist) - - - - - Howard and Third
First Presbyterian (Presbyterian) - - - - - Fourth and Cedar
Our Lady of Lourdes Cathedral (Catholic) - - - - - 1115 Riverside
First Baptist Church (Baptist) - - - - - Second and Lincoln

Tourists Bureaus in Spokane

Where-to-go Bureau - - - - - Davenport Hotel
Chamber of Commerce - - - - - Riverside and Washington

Theatres in Spokane

Liberty Theatre, 718 Riverside - - - - - Pictures
Pantages Theatre, N. 118 Howard - - - - - Vaudeville
Casino Theatre, 813 Riverside - - - - - Pictures
Clemmer Theatre, Sprague and Lincoln - - - - - Pictures
Woodward Theatre, N. 224 Post - - - - - Road Shows
Auditorium Theatre, Post and Main - - - - - Pictures and Occasional Vaudeville

Class A Theatre, 717 Sprague - - - - - Pictures
Empress Theatre, 249 Riverside - - - - - Pictures
Hippodrome Theatre, S. 111 Howard St. - - - - - Vaudeville
Lyric Theatre, N. 10 Washington - - - - - Pictures
Majestic Theatre, N. 118 Washington - - - - - Pictures
Rex Theatre, 326 Riverside - - - - - Pictures
Unique Theatre, 509 Main - - - - - Pictures

Hotel Information

As this is the tourist season and hotels are usually well filled, it will be advisable for you to make reservation well in advance.

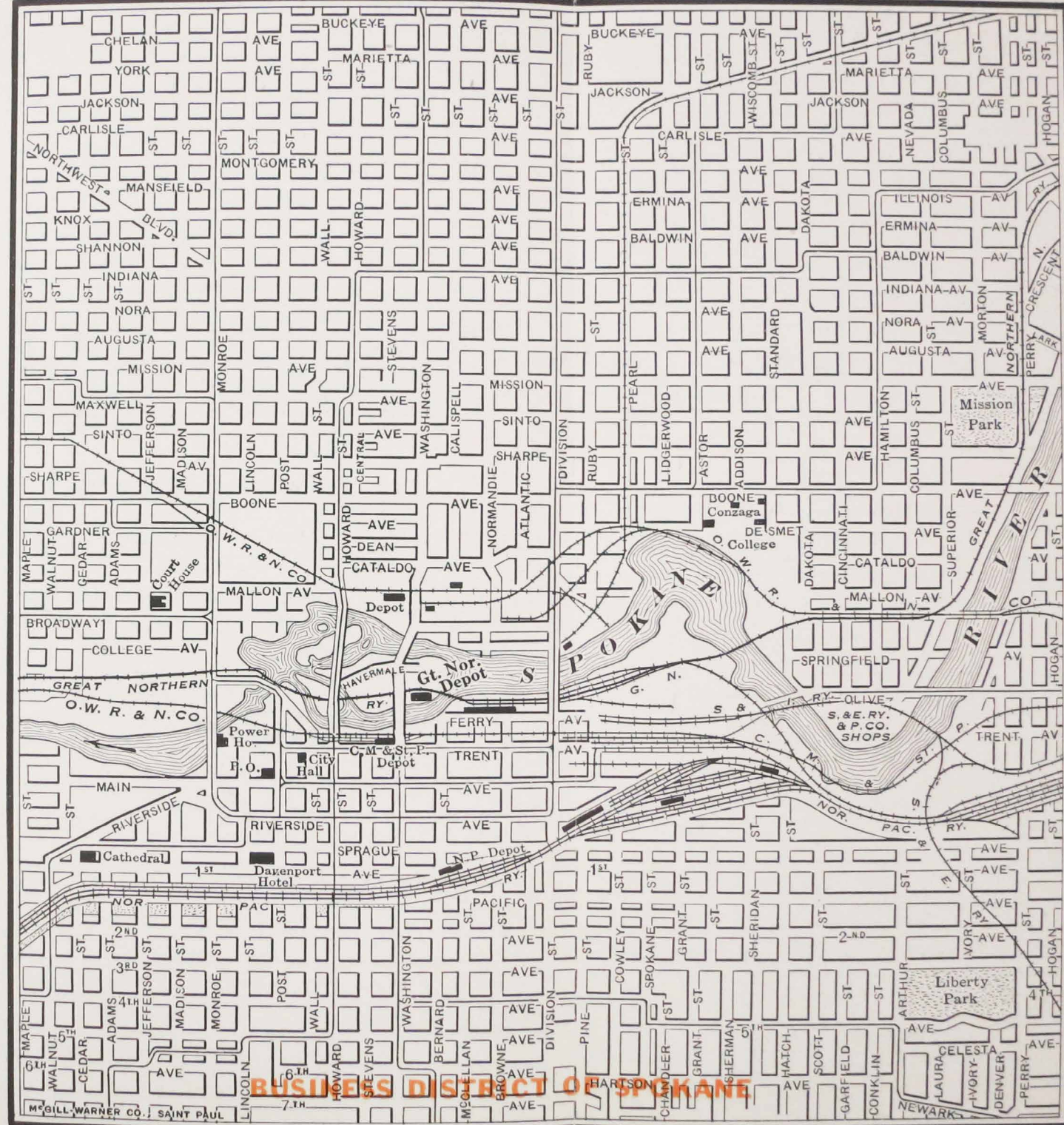
The following is a list of hotels.

The Davenport Hotel	- - - - -	\$2.25 to \$6.00
The Coeur d'Alene Hotel	- - - - -	1.50 to 2.00
New Madison Hotel	- - - - -	1.00 to 3.50
Pacific Hotel	- - - - -	1.25 to 3.00
Spokane Hotel	- - - - -	1.50 to 5.00

The following hotel general rates are listed below:

American Hotel	Fairmont Hotel	Ridpath Hotel
Arlington Hotel	Hill Hotel	Riverside Hotel
Atlantic Hotel	Langham Hotel	Sillman Hotel
Assemblee Hotel	Leland Hotel	St. Francis Hotel
Butler Hotel	Lever Hotel	Touraine Hotel
Chicago Hotel	Maryland Hotel	Mrs. Stedman
Carlyle Hotel	Palmerston Hotel	Stanford Hotel
Dempsey Hotel	Parsons Hotel	Norland Hotel
Galax Hotel	Pedicator Hotel	Victoria Hotel
Halliday Hotel	Plastino Hotel	

One person (without bath)	- - - - -	\$1.00 to \$2.50
Two persons (without bath)	- - - - -	1.50 to 3.25
One person (with bath)	- - - - -	2.00 to 3.50
Two persons (with bath)	- - - - -	2.50 to 4.00



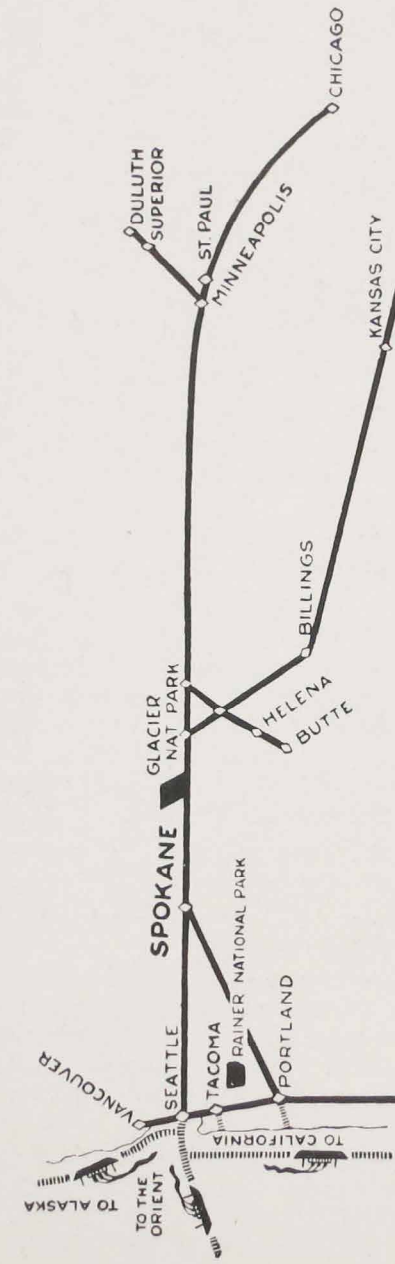
Good Fishing May be Had Within The City's Limits

For Further Information Regarding the Great Northern Railway's splendid train service to Spokane with three trans-continental trains headed by the new solid steel "Oriental Limited" Rates, Tours, Stop-overs, to Spokane or any point in the West Inquire of any Great Northern Railway Office Shown Below.

TRAVEL HEADQUARTERS

BOSTON, MASS.	- - - - -	294 Washington St.
BUFFALO, N. Y.	- - - - -	683 Ellicott Square Bldg.
CHICAGO, ILL.	- - - - -	226 W. Adams St.
CINCINNATI, OHIO	- - - - -	609 Traction Bldg.
CLEVELAND, OHIO	- - - - -	508 Hippodrome Bldg.
DALLAS, TEX.	- - - - -	1013 Southwestern Life Bldg.
DES MOINES, IOWA	- - - - -	425 Kraft Bldg.
DETROIT, MICH.	- - - - -	619 Free Press Bldg.
DULUTH, MINN.	- - - - -	428 W. Superior St.
KANSAS CITY, MO.	- - - - -	516 Railway Exchange Bldg.
LOS ANGELES, CAL.	- - - - -	716 Citizens National Bank Bldg.
MILWAUKEE, WIS.	- - - - -	810 Majestic Bldg.
MINNEAPOLIS, MINN.	- - - - -	524 2nd Ave. So.
NEW YORK, N. Y.	- - - - -	516 Longacre Bldg., 42nd and Broadway
PHILADELPHIA, PA.	- - - - -	409 Finance Bldg.
PITTSBURGH, PA.	- - - - -	214 Empire Bldg.
ST. LOUIS, MO.	- - - - -	203 Boatmen's Bank Bldg.
ST. PAUL, MINN.	- - - - -	4th and Jackson Sts.
SAN FRANCISCO, CAL.	- - - - -	1009 Hearst Bldg.
SIOUX CITY, IOWA	- - - - -	516 Nebraska St.
SUPERIOR, WIS.	- - - - -	Tower Ave. and 13th St.
TORONTO, ONT.	- - - - -	202 Webster Bldg.
WINNIPEG, MAN.	- - - - -	226 Portage Ave.

SPOKANE OFFICE, The Davenport Hotel
J. F. PEWTERS, General Agent
R. C. MURPHY, City Passenger and Ticket Agent
JAMES JOHNSTONE, City Passenger Agent
Phone M. 887
A. J. DICKINSON, Passenger Traffic Manager
St. Paul, Minn.



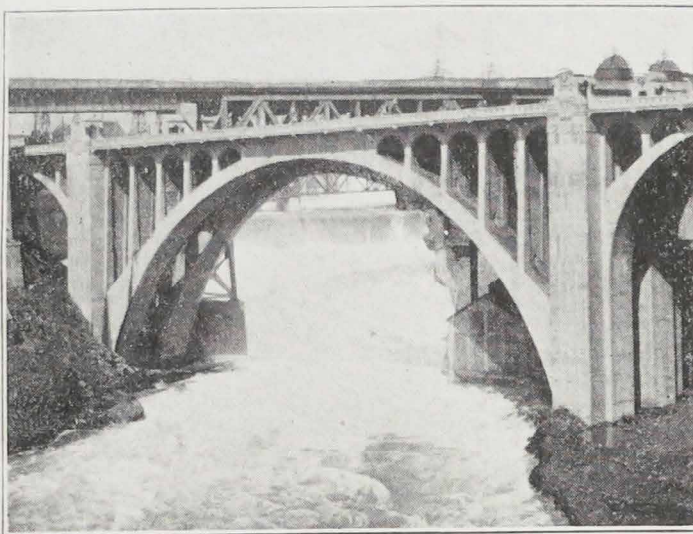
Outline may showing the Great Northern way to Spokane and route of the New Oriental Limited through between Chicago and the Pacific Northwest via Glacier National Park and Spokane in 70 hours, also service from Kansas City via Billings.

PRINTED IN U. S. A.

Spokane

FOR THE SIGHTSEER

Go GREAT NORTHERN



Lower Cataract Spokane Falls

SPOKANE, WASH., is a most delightful place to visit, a vacation city incomparable. It is a modern metropolitan municipality, the hub of the Inland Empire and the largest city between the Rockies of Montana and the Cascades of Washington; it is set down in the midst of pine-clad mountains, waterfalls, lakes, apple orchards and flowers. Through the heart of the city flows the Spokane River, a vivid green mountain torrent that tumbles over the cataracts of Spokane Falls, in the midst of the city skyscrapers. Liberal stop-over privileges on round trip tickets to Pacific Coast points afford passengers a splendid opportunity to stop off at Spokane. In addition a ten day stopover is now permitted holders of one way tickets reading via the Great Northern Ry. to the Coast.

The Great Northern way to Spokane, Wash., is a very popular one with transcontinental travelers on account of the fact that it runs via Glacier National Park and by reason of the splendid transcontinental train service afforded on the new Oriental Limited from Chicago and through trains from St. Paul, Minneapolis and Kansas City.

What to See in Spokane

CATARACTS OF THE SPOKANE RIVER in the heart of the city. The Spokane Falls generate approximately 25,000 electrical horsepower. May be seen from Monroe street or Post street Bridges; two blocks north of the Davenport Hotel.



A Spokane Business Thoroughfare

OLD NATIONAL BANK BUILDING'S observation roof affords a splendid view of the city and Spokane Valley. Obtain key either in the bank lobby or in room 921. Evenings by appointment.

CITY MUSEUM, 411½ First Avenue, a splendid collection of the historical features of the district. Open every week day from 10:00 a. m. to 5:00 p. m. and from 2:00 to 5:00 p. m. on the first Sunday of the month. It is free to the public and the obliging curator will be very glad to show you the interesting relics.

THE DAVENPORT HOTEL—One of the famous hosteleries in America. Visit the main lobby, the many dining and luncheon rooms. The management will be glad to take you through the entire hotel.

CHAMBER OF COMMERCE—A comprehensive display of agricultural and mining specimens of the Inland Empire will be found on exhibit at the chamber of commerce office, Riverside and Washington. Visitors are cordially invited to inspect this display, which is well worth while.

REVIEW ROCK—An unusual basaltic formation at Cliff Park, 14 blocks south of the Davenport Hotel or a fifteen-minute ride via the Cable Add. car line. From this vantage point an unusual view is obtained.

SPERRY FLOUR MILLS said to be one of the most modern plants in America, can be reached east on Sprague avenue or via East Sprague cars.



An Indian Canyon Park

McGOLDRICK SAW MILL, right in the city; one of the modern Pacific Northwest plants. A few minutes in the mill will be a revelation. Hillyard Street cars can be taken within a few blocks.

GONZAGA UNIVERSITY, one of the foremost Catholic institutions in the Northwest. Boone at Astor Street, Hillyard or Astor cars.

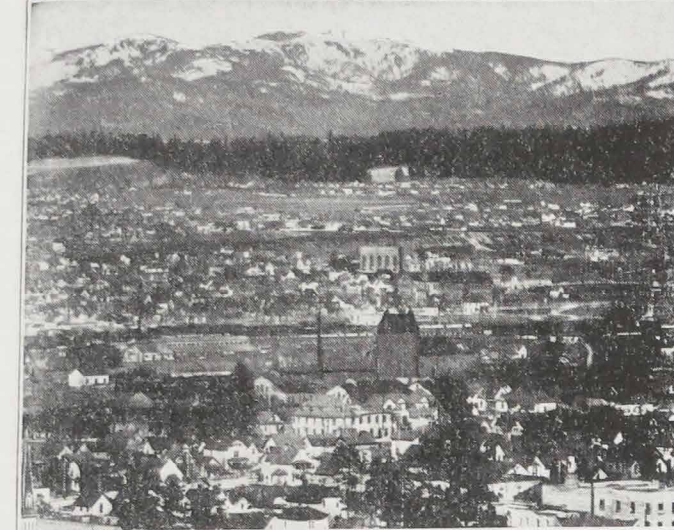
BRIDGES WORTH SEEING—Monroe Street Bridge, mentioned previously, is one of the largest concrete structures in the world. Howard Street, Post Street and Division Street Bridges all cross the Spokane River within a distance of eight blocks.

LATAH CREEK BRIDGE, some times known as Hangman Creek Bridge, in the western section, is a series of enormous concrete spans, beautiful in their massive simplicity of line.

A Few of Spokane's Parks

NATATORIUM PARK on river bank in the Northwest section at terminal of Broadway and Boone lines. Baseball grounds, natatorium and amusement features. An excellent place to spend a few hours.

CANNON HILL PARK—Take Cannon Hill car at Howard and Riverside. Leave car at Nineteenth and Lincoln. Size: 13 acres. Distance: 1½ miles. Wading pool. This park offers a pretty place to spend a quiet afternoon on the lawns, around the ponds, and back among the trees.



The City with Mt. Spokane, only municipally owned mountain, in the Distance

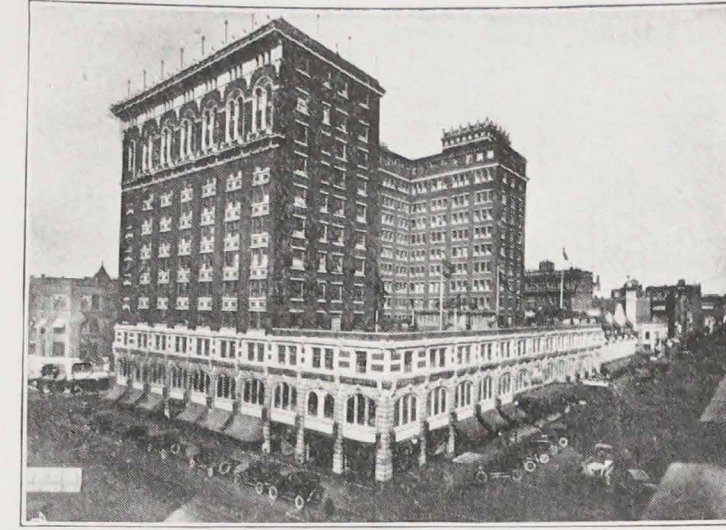
AUDUBON PARK—Take Northwest Boulevard car at Post and Main. Leave car at "A" Street at park entrance. Size: 37 acres. Distance: 2½ miles. Playgrounds. Set back among the pines and floored with green lawns, Audubon Park is a pleasant place to spend an afternoon or for a walk through the grounds.

HIGH DRIVE PARKWAY—Take Cannon Hill car at Howard and Riverside. Leave car at Twenty-fourth and Lincoln and walk four blocks west. Size: 112 acres. Distance: 1½ miles.

Another excellent view is found from the High Drive Parkway, high up on the bluffs on the east bank of Latah Creek and overlooking the valley. A pleasant hour can be spent on this parkway.

MANITO PARK, FLOWER GARDENS AND ZOO—Take Manito car at Howard and Riverside. Leave car at Twentieth Avenue at park entrance. Size: 90 acres. Distance: 1½ miles. Playgrounds.

The most frequently visited city park, due to its close in location, its flower gardens and its zoo, is Manito park, located on the south hill. The sunken gardens are a feature as well as the city park nursery. The zoo is the only institution of its sort in the Inland Empire and includes an aerie, concrete dens for the bears and a buffalo corral. There are mirrorlike lagoons, picnic grounds and tennis courts.



Davenport Hotel

DOWNRIVER PARK AND GOLF LINKS—Take Northwest Boulevard car westbound on Main or North on Post. Leave car at Nettleton and walk south to park. Leave car at "H" street for Golf. Size: 165 acres. Distance: 2½ miles.

CLIFF PARK—Take Cable Addition car at Howard and Riverside. Leave car at Stevens and Thirteenth. Size: 5 acres. Distance: 1 mile.

Review Rock in this city park affords a fine view of the city. This vantage point should be on the visiting list of every citizen and tourist.

MISSION PARK AND SINTO TRIANGLE AND POOL—Take Hillyard car at Howard and Riverside.

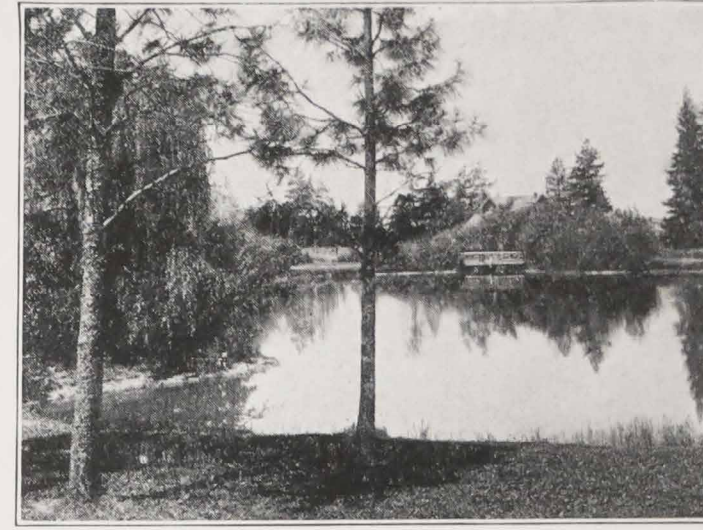
LINCOLN PARK—Take Lincoln Park car, eastbound on Main or southbound on Washington. Leave car at Altamont Street and walk south into park. Size: 32 acres. Distance: 2½ miles. Playgrounds.

After a long, pleasant ride, the visitor will find

Lincoln Park one of the natural beauty spots of Spokane. The location is excellent for securing a fine view

LIBERTY PARK AND POOL—Take Altamont car, eastbound on Main or southbound on Washington. Leave car at Fifth and Arthur. Size: 20 acres. Distance: 1¼ miles. Playgrounds.

Liberty Park is best known for the city swimming pool and wading pool.



Manito Park

MINNEHAHA PARK AND STUDIOS—Take Minnehaha car at Howard and Riverside. Leave car at end of line at Park entrance. Size: 39 acres. Distance: 4 miles.

Walking three-fourths of a mile east from the end of the car line, the hiker will find an interesting view on the Spokane River at the Upriver dam and pumping plant of the City of Spokane. Every amateur photographer wants a picture of the falls.

CORBIN PARK—Take North Howard or North Madison car at Howard and Riverside. Leave car at Cleveland and Washington and walk one block north. Size: 11 acres. Distance: 1¾ miles. To walk through Corbin Park, is a treat for anyone. It is one of the oldest park properties. Walks and drives wind through the park.

HAYS PARK—Take Hillyard car at Howard and Riverside. Leave car at Gordon Avenue. Size: 8 acres. Distance: 3 miles.

In Hays Park the city has created a beautiful flower garden including a large area of roses. The large canna flowers thrive better at Hays Park than elsewhere in the city.

COEUR D'ALENE PARK—Take Pacific car, west bound on Riverside. Leave car at end of line.

Size: 10 acres. Distance: 1 mile. Wading pool. Here is an old, close-in park which has a wide variety of native and deciduous trees and shrubs.