

Principal Seattle Hotels (All European Plan)

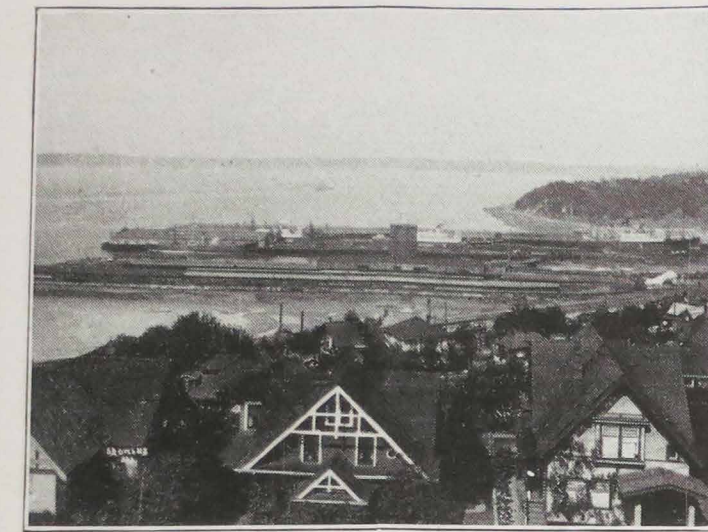
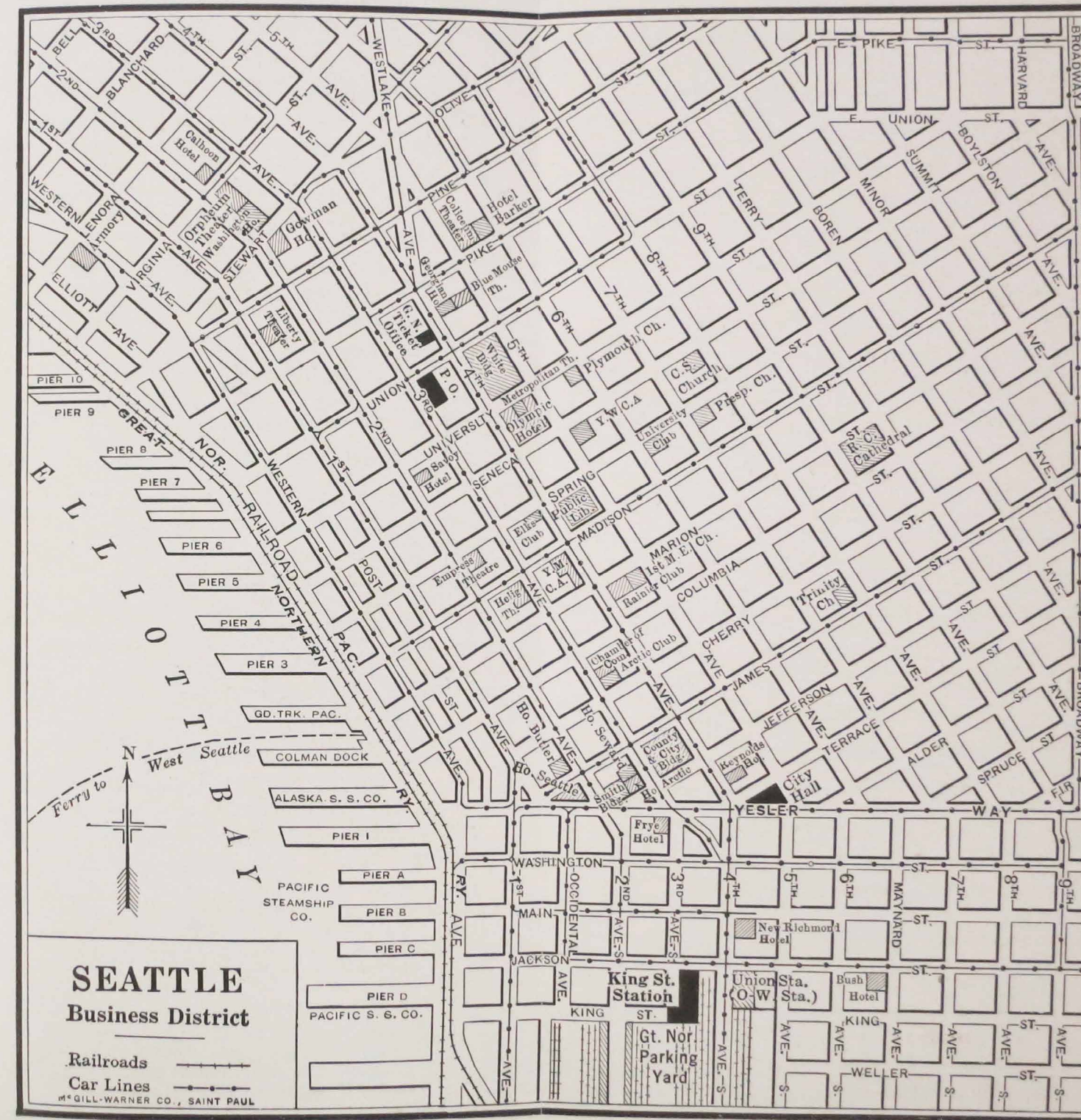
New Washington Hotel.....	Second Ave. and Stewart St.
250 rooms. \$3.00 up.	
Gowman Hotel.....	Second Ave. and Stewart St.
175 rooms. \$2.00 up.	
Olympic Hotel.....	
609 rooms. Under construction at Fourth Ave. and University St., a community subscribed hotel to cost, complete, \$4,000,000. To open about Nov. 1, 1924.	
New Richmond Hotel.....	Fourth Ave. and Main St.
305 rooms. \$1.50 up.	
Frye Hotel.....	Third Ave. and Yesler Way.
325 rooms. \$2.50 up.	
Savoy Hotel.....	Second Ave. and University St.
200 rooms. \$2.00 up.	
Butler Hotel.....	Second Ave. and James St.
200 rooms. \$1.50 up.	
Calhoun Hotel.....	Second Ave. and Virginia St.
150 rooms. \$1.50 up.	
Moore Hotel.....	Adjoining New Washington Hotel.
165 rooms. \$2.00 up.	

Downtown Theatres

Metropolitan Theatre, Fourth Ave. and University St.....	Legitimate attractions.
Orpheum Theatre, Second Ave. and Virginia St.....	Orpheum vaudeville.
Pantages Theatre, Third Ave. and University St.....	Vaudeville.
Palace Hip, Second Ave. and Spring St.....	Musical Comedy.
The largest motion picture houses which rank with the finest in the West are:	
Coliseum, Fifth Ave. and Pike St.	
Liberty, First Ave. between Pike and Pine Sts.	
Strand, Second Ave. and Seneca St.	
Heilig, Third Ave. and Madison St.	
Blue Mouse, Fifth Ave. between Pike and Union Sts.	
Columbia, Second Ave. between Pike and Union Sts.	

Downtown Churches

Western Washington Conference S. D. A. Fourth Ave. and Marion St.	
First Baptist Church.....	Harvard Ave. and Seneca St.
St. James Cathedral.....	Ninth Ave. and Columbia St.
First Christian Church.....	Broadway and E. Olive St.
Fourth Church of Christ-Scientist.....	Eighth Ave. and Seneca St.
Plymouth Congregational Church.....	Sixth Ave. and University St.
Trinity Parish.....	Eighth Ave. and James St.
Russian-Greek Orthodox Church.....	753 Lakeview Ave.
Bethany Lutheran Church.....	134 Fairview Ave.
First Methodist Church.....	Fifth Ave. and Marion St.
First Presbyterian Church.....	Seventh Ave. and Spring St.
Congregation Temple de Hirsch.....	Fifteenth Ave. and E. Union St.
First United Presbyterian Church.....	Fourteenth Ave. and E. Spring St.



Docks at Smith's Cove.

For Further Information Regarding The Great Northern Railway's Splendid Transcontinental Service to Seattle and about the new Solid Steel Oriental Limited and Rates, Tours and Stopovers, to Seattle or any point in the West Inquire of any Great Northern Railway Office Shown Below

TRAVEL HEADQUARTERS

BOSTON, MASS.	294 Washington St.
BUFFALO, N. Y.	683 Ellicott Square Bldg.
CHICAGO, ILL.	226 W. Adams St.
CINCINNATI, OHIO	609 Traction Bldg.
CLEVELAND, OHIO	508 Hippodrome Bldg.
DALLAS, TEX.	1013 Southwestern Life Bldg.
DES MOINES, IOWA	425 Kraft Bldg.
DETROIT, MICH.	619 Free Press Bldg.
DULUTH, MINN.	428 W. Superior St.
KANSAS CITY, MO.	516 Railway Exchange Bldg.
LOS ANGELES, CAL.	716 Citizens National Bank Bldg.
MILWAUKEE, WIS.	810 Majestic Bldg.
MINNEAPOLIS, MINN.	524 2nd Ave. So.
NEW YORK, N. Y.	516 Longacre Bldg., 42nd and Broadway
PHILADELPHIA, PA.	409 Finance Bldg.
PITTSBURGH, PA.	214 Empire Bldg.
ST. LOUIS, MO.	203 Boatmen's Bank Bldg.
ST. PAUL, MINN.	4th and Jackson Sts.
SAN FRANCISCO, CAL.	1009 Hearst Bldg.
SIOUX CITY, IOWA	516 Nebraska St.
SUPERIOR, WIS.	Tower Ave. and 13th St.
TORONTO, ONT.	202 Webster Bldg.
WINNIPEG, MAN.	226 Portage Ave.

Seattle Offices, 1403 4th Ave.

J. WESLEY YOUNG, General Agent Passenger Dept.

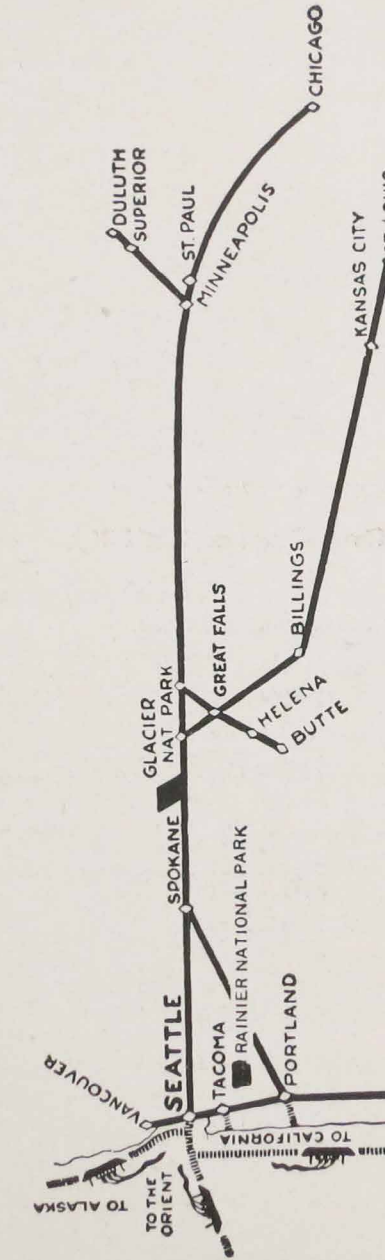
T. J. MOORE, City Passenger and Ticket Agent

201 KING STREET STATION

C. W. MELDRUM, Assistant General Passenger Agent

A. J. DICKINSON, Passenger Traffic Manager

St. Paul, Minn.



PRINTED IN U. S. A.

Outline map showing the Great Northern way to Seattle and route of the New Oriental Limited through between Chicago and Seattle via Glacier National Park in 70 hours, also service from Kansas City via Billings.

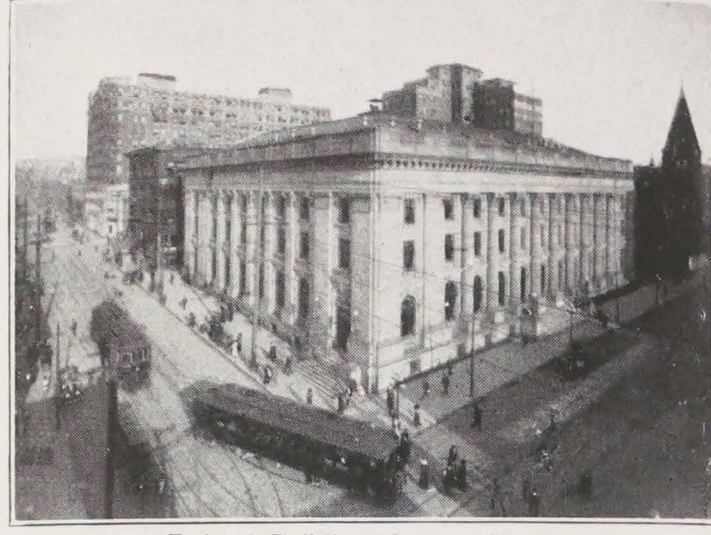
Seattle

FOR THE SIGHTSEER

Go GREAT NORTHERN



Seattle with Mt. Rainier in the distance.



Federal Building, Seattle, Wash.

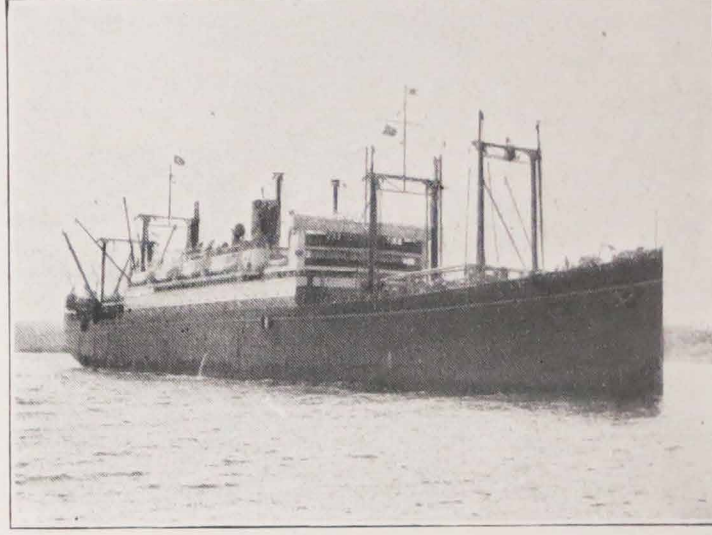
Wonder One-Generation City

Forty years ago Seattle had 3,530 citizens, no railroads and no regular steamship services.

Today Seattle has more than 350,000 citizens. It has become an industrial, commercial, railroad and shipping center for the Empire of the Pacific Northwest.

Some of the substantial reasons for this remarkable growth include:

1. A mild climate the year 'round which gives a distinct advantage to labor production as well as health and physical comfort.
2. Seattle's trade territory has tremendous resources including timber, minerals, fisheries, agriculture, and the State of Washington has one-sixth of all the potential water power of the nation.
3. Seattle is the gateway to Alaska's expanding trade territory.
4. One of the world's greatest natural harbors.
5. Seattle, nearest American port to Asia, increased its foreign trade 1122% in the last decade.
6. Team play between employer and employee. Seattle has an enviable record in percentage of home-owning citizens, low rate of illiteracy, high educational standards, influential churches and no American city has as low an annual average death rate.



One of the Admiral Line Steamers plying between Seattle and the Orient.

A Great Seaport

Seattle is the only Pacific Northwest American port having direct passenger sailings to Alaska and the Orient. Last year Seattle ranked second to New York in the number of passengers entering the United States.

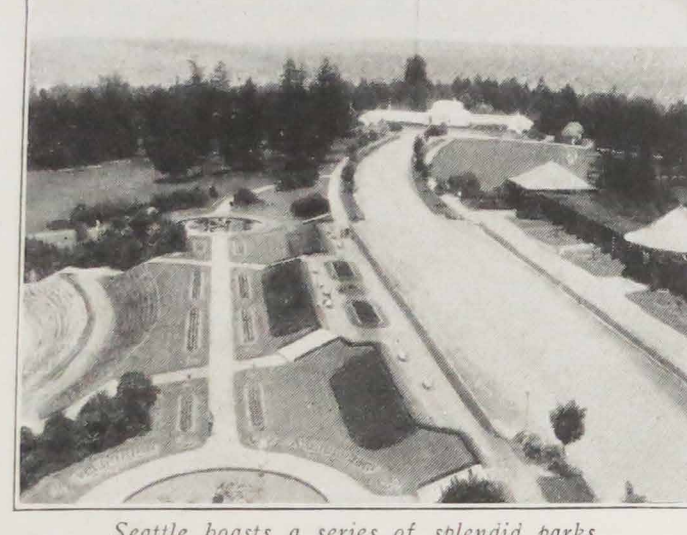
Its harbor is rated by the U. S. Shipping Board at the head of Class One Harbors—those deep enough and safe for ships of any draft. Sixty-eight steamship lines serve Seattle.

On the busy waterfront, where more than 6,000,000 tons of cargo was handled last year, one sees the flags of all nations.

A Mild Climate

Seattle residents boast of their mild, equable year 'round climate. The average daily temperature in June, July and August is 62 degrees. For December, January and February it is 41 degrees.

The wonderful climate, the inspiring scenery which lifts one above the petty ills and worries of life, the life-giving air—blend of the air of the mountains and the sea, the universal supply of pure water; perfect, natural drainage; cheap, plentiful green vegetables the year 'round, an absence of slum districts and an exceptional milk supply make for a health record unique in the world's history. For many years Seattle has had the lowest average annual death rate of any city in the world and is in a class by itself in the low rate of infant mortality. It is a babies' paradise.



Seattle boasts a series of splendid parks connected by boulevards.

Parks and Boulevards

Supplementing its unmatched natural endowment for recreation Seattle has a remarkable system of parks, boulevards and playgrounds. Seattle's park system has a total area of over 1900 acres.

There are 45 parks, in size from 5 to 200 acres. Alki Beach is the favorite salt water bathing place and there are several municipal fresh water beaches. Leschi Park and Madison Park, on Lake Washington, are headquarters of the canoeists and owners of pleasure craft. Puget Sound is a wonderful cruising ground for yachtsmen.

Volunteer and Woodland Parks, the latter with its famous zoo, are among the show parks of the West.

Due to the mild climate these out-of-door playgrounds are used all winter, as well as spring and summer.

Connecting the system of parks and playgrounds are thirty-five miles of boulevards and scenic highways skirting Puget Sound, the shores of three beautiful lakes, and following the high ridges and the hillsides. The driveways have been parked and planted except where Nature anticipated Man's handiwork, and there is a luxuriance of growth everywhere.

University of Washington

On a 582-acre campus with shore line on two beautiful lakes, with a scenic setting unparalleled, are the



New Olympic Hotel.

Tudor-Gothic structures housing the University of Washington, second largest state university west of the Mississippi River. 1923 enrollment was 7,005 students.

Rainier National Park

Rainier National Park, with its towering peak, the highest perpetually snow-capped mountain in the nation is but a few hours' ride from both Seattle and Tacoma, and the Rainier National Park Company throughout the year maintains a ticket office and information bureau at 418 University Street.

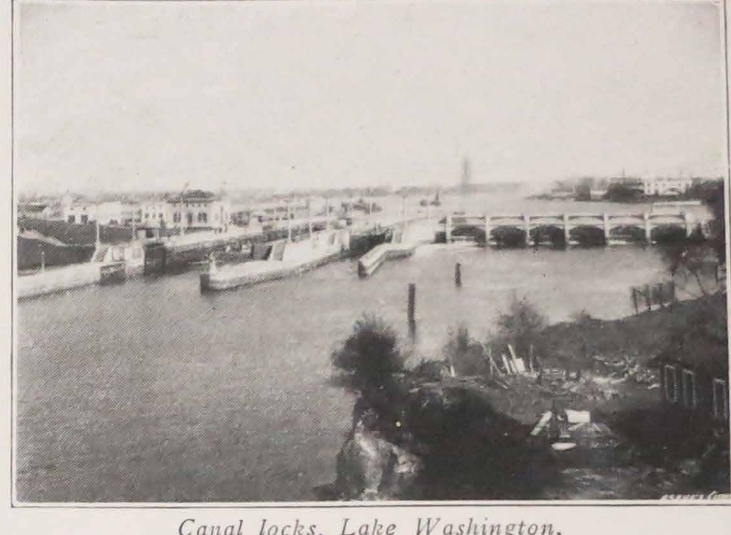
Trips Over Puget Sound

Nature has combined to make the Puget Sound country a playground par excellence, blessed with a climate that invites one the year 'round to an out-of-doors unparalleled in beauty and interest.

Seattle in the hub from which operate the fleet of steamers serving the 2,000 miles of shore line of Puget Sound and also for the steam and interurban and stage lines which make the attractions so accessible.

Some of the interesting trips by boat are:

PUGET SOUND NAVY YARD AT BREMERTON—Battleships, cruisers, torpedo boats, submarines. Two immense drydocks, one largest on Pacific Coast. Colman Dock, frequent service, daily and Sunday. Round trip fare by steamer 80 cents. One hour each way.



Canal locks, Lake Washington.

MOUNTAIN LAKES—Lake Crescent, Lake Sutherland and Lake Cushman, rivaling beauties of Alpine Lakes. Gems of water in massive setting of snow-clad peaks. Boats, connecting with stages and railways, leave Colman Dock daily for Port Angeles.

VICTORIA, B. C.—"More English than the cities of England." Daily. Round trip fare \$5.00 and \$5.95.

SAN JUAN ISLANDS—Group of Submerged mountain peaks, comparable with Thousand Islands trip. Boating, bathing, fishing. Year around daily steamer service from Colman Dock.

THE PALISADES OF PUGET SOUND—Hood Canal, American fjord. Olympic Mountains rise 5,000 to 8,000 feet from water's edge. Colman Dock, Monday, Wednesday and Friday. Sunday excursions.

The Puget Sound Archipelago, down among the Islands, is a vacation land supreme for those who love stretches of broad water, sea bathing, sea fishing and sea air. The Islands, 100 in number, are supremely beautiful and have a charm and solace all their own, offering camping spots without limit and without price.

Year Round Golf Links

Probably no other city of equal size in the United States has gone into golf more extensively. Besides the superb course of the Seattle Golf Club, there are the Earlington Course, the University of Washington Course, Rainier Golf Club Course, Inglewood Country Club Course, and a fine Municipal Course in a wonderful scenic setting."