

Fourth Day
MORNING—Play golf, either on the excellent municipal links or on some of the private courses.
AFTERNOON—Visit Oregon City and fish for salmon (in season) below the Falls, or take one of the loop trips.
EVENING—Visit the theatre you did not attend the night previous.

Fifth Day
Take the whole day for the Upper Columbia River Highway trip.

Sixth Day
Visit Mt. Hood while on the Columbia River Highway trip.

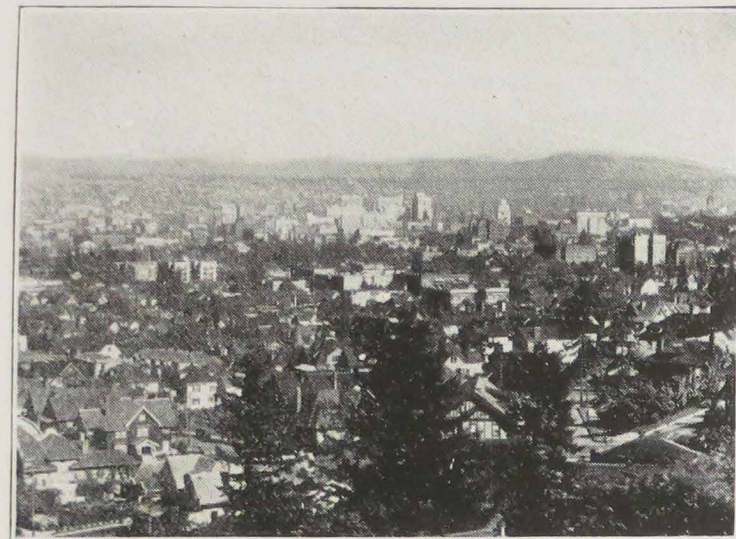
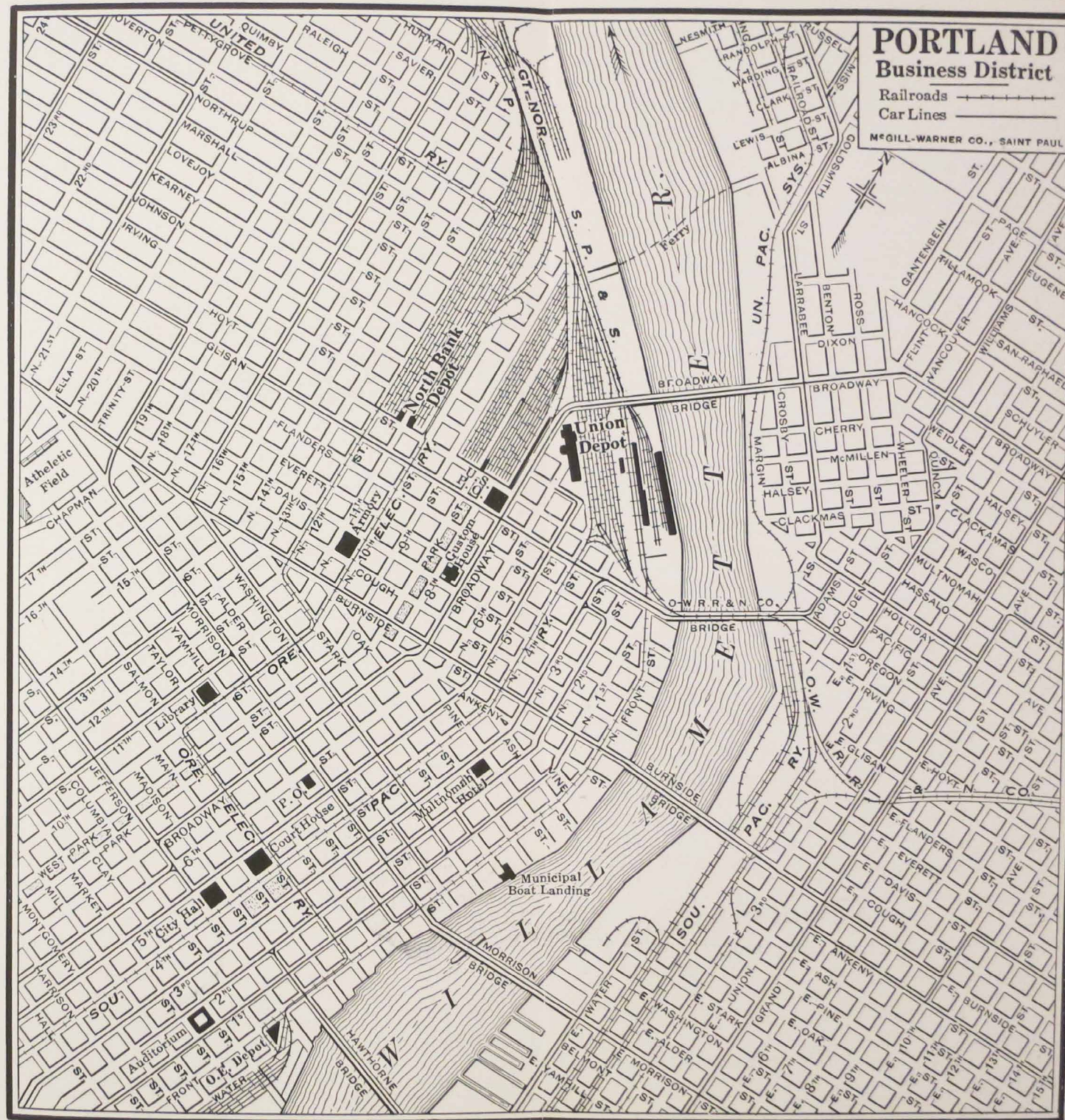
Seventh and Eighth Days
Go to historic old Astoria, Seaside and the beaches with their seashore amusements, surf and natatorium bathing, drives and walks along the sandy shores, digging for clams or just enjoying the tonic salt breezes.

Ninth Day
Take the Salem-McMinnville or some other Loop trip.

Tenth Day
Visit the resorts on the south side of Mt. Hood.
Of course, your trip may be extended indefinitely to most of the resorts referred to, but the foregoing are just a few.

Illustrated descriptive literature of the resorts and trips referred to in this leaflet, together with maps of the state and Columbia River Highway may be obtained from the publicity department, Herbert Cuthbert, Manager, **Portland Chamber of Commerce**, sixth floor, Oregon Building, or from the **Tourist Information Bureau**, maintained by the Portland Chamber of Commerce, Ground Floor, Oregon Building, Fifth and Oak Streets, Portland, Oregon.

"Portland is a Friendly City"



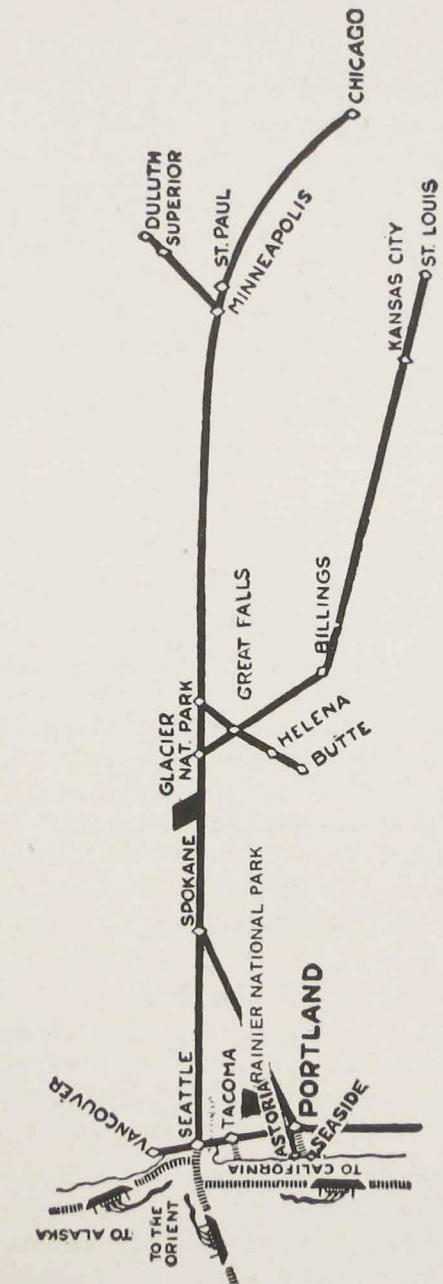
Portland from Council Crest.

For Further Information Regarding The Great Northern Railway's Splendid Transcontinental Service to Portland and about the new Solid Steel Oriental Limited and Rates, Tours and Stopovers, to Portland or any point in the West Inquire of any Great Northern Railway Office Shown Below

TRAVEL HEADQUARTERS

BOSTON, MASS.	294 Washington St.
BUFFALO, N. Y.	683 Ellicott Square Bldg.
CHICAGO, ILL.	226 W. Adams St.
CINCINNATI, OHIO	609 Traction Bldg.
CLEVELAND, OHIO	508 Hippodrome Bldg.
DALLAS, TEX.	1013 Southwestern Life Bldg.
DES MOINES, IOWA	425 Kraft Bldg.
DETROIT, MICH.	619 Free Press Bldg.
DULUTH, MINN.	428 W. Superior St.
KANSAS CITY, MO.	516 Railway Exchange Bldg.
LOS ANGELES, CAL.	716 Citizens National Bank Bldg.
MILWAUKEE, WIS.	810 Majestic Bldg.
MINNEAPOLIS, MINN.	524 2nd Ave. So.
NEW YORK, N. Y.	516 Longacre Bldg., 42nd and Broadway.
PHILADELPHIA, PA.	409 Finance Bldg.
PITTSBURGH, PA.	214 Empire Bldg.
ST. LOUIS, MO.	203 Boatmen's Bank Bldg.
ST. PAUL, MINN.	4th and Jackson Sts.
SAN FRANCISCO, CAL.	1009 Hearst Bldg.
SIOUX CITY, IOWA	516 Nebraska St.
SUPERIOR, WIS.	Tower Ave. and 13th St.
TORONTO, ONT.	202 Webster Bldg.
WINNIPEG, MAN.	226 Portage Ave.

PORTLAND, ORE. OFFICE: 201 Morgan Bldg.
W. E. HUNT, General Agent
H. DICKSON, City Passenger Agent
Phone Atwater 0931
C. W. MELDRUM, Assistant General Passenger Agent
KING STREET STATION
Seattle, Wash.
A. J. DICKINSON, Passenger Traffic Manager
St. Paul, Minn.



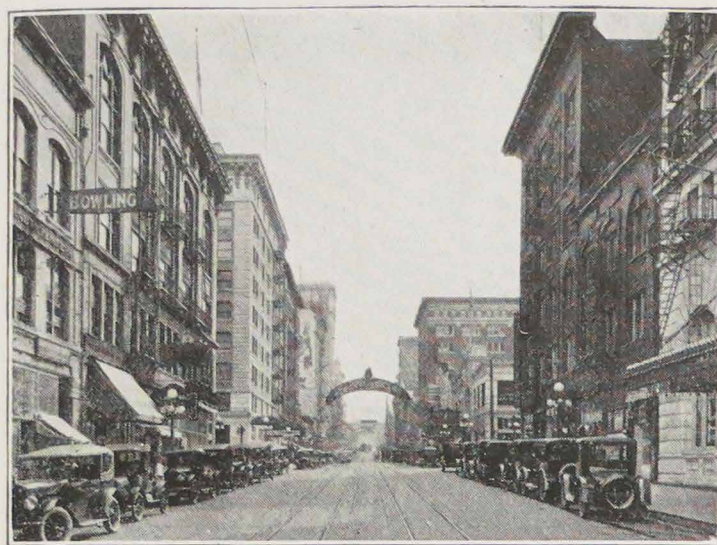
Outline Map showing the "Great Northern Way" to Portland and route of the new Oriental Limited between Chicago and Portland via Glacier National Park. Also service from Kansas City via Billings.

PRINTED IN U. S. A.

Portland

FOR THE SIGHTSEER

Go GREAT NORTHERN



One of Portland's Modern Thoroughfares

You Will Like PORTLAND

The Convention City and Recreation Center

A DELIGHTFUL climate, full recreational advantages, excellent hotel accommodations and fast and direct transportation facilities are the four major requirements that both convention delegates and vacationists should demand and have the right to enjoy.

When Portland is chosen, each of the requirements is met in the fullest measure—because the Rose City, famed the world over for its hospitality, offers all of these.

Magnificent scenery, colorful and fascinating, surrounds Portland. Furthermore, it is as varied as it is beautiful. Hundreds of miles of paved highways, electric interurbans, steam lines and water transport, make it all easily and quickly accessible. You have only to choose,—the beaches, the mountains, forests, valleys, lakes, waterfalls or snowfields, and within a few minutes or a few hours at most you can be enjoying them.

And, best of all, a gentle temperate climate makes them all the more enjoyable. The mean average temperature for 1923 was 54 degrees. During February, the coldest month, the mean average temperature was 37 degrees, and for August, the hottest month, the aver-



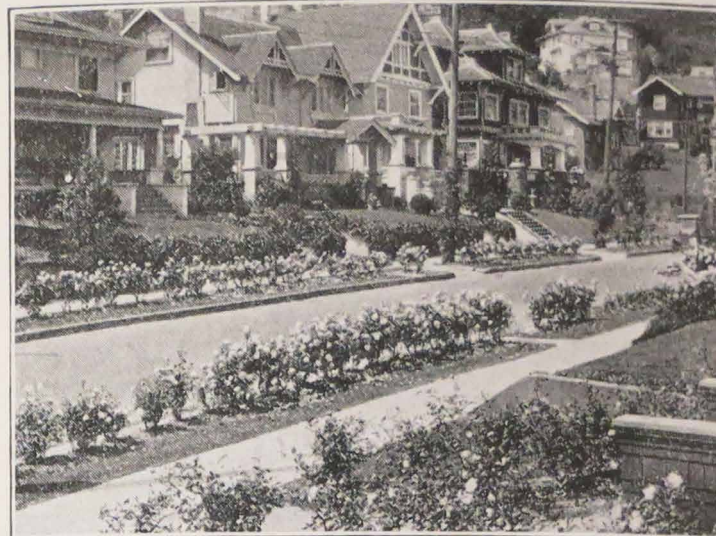
A Charming View in Laurelhurst Park, Portland

age was 71 degrees. Such temperatures spell "comfort"—and for the summer "conventionaire" means opportunity to attend interesting sessions uninterrupted by sweltering and enervating heat.

To comfort, Portland adds convenience and facilities for conventions, because it owns and operates the Municipal Auditorium, a structure especially designed and built for large gatherings. The auditorium has a seating capacity of more than 5500 and is so constructed that it can be arranged either for small or large audiences or for several different meetings at the same time. It is conveniently located in the business district and can be reached on foot within a few minutes from any of Portland's principal hotels.

The majority of Portland's hotels are within a few blocks of each other in the business section. Accommodations are excellent. The hotels are large, modern, and their directors make it the rule NEVER to raise prices for conventions. Rates are very reasonable.

Five transcontinental railway systems have their terminus at Portland, although the city is served by ten railroads which connect with every important transportation system in the United States. The city is also served by several important steamship lines, via the Columbia River Route.



Rose Hedges in Portland's Residence District Enhance the City's Beauty

Portland the Residential City

Portland, the Residential City, is noted for its charm. Beautiful residences, in districts of surpassing beauty invite relaxation and rest for the business man and worker. Miles of shaded streets, lined with hedges of the world's finest roses, make Portland residential districts beautiful beyond compare. Portland's Famous Rose Festival is held each year in the middle of June.

Eighteen public playgrounds, and park areas totaling 2046 acres, assure plenty of opportunity for recreation and play.

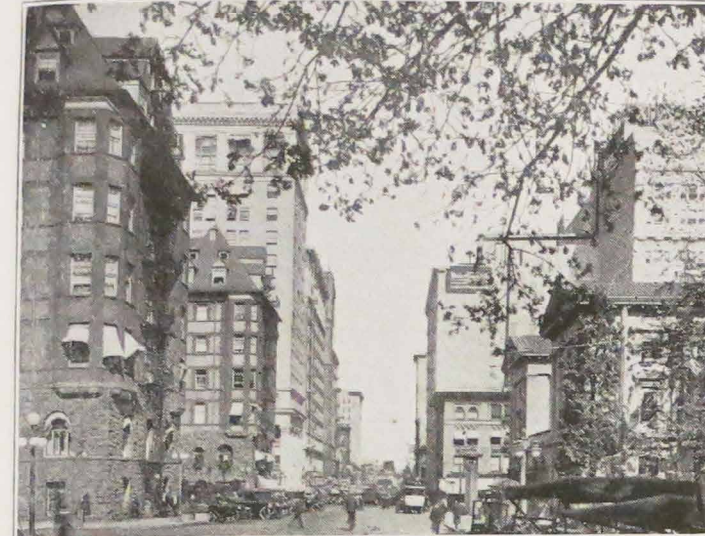
Washington Park, situated on the Western hills, above the city, contains trees and bushes from every part of the world. An animal and bird zoo delights the children with its quaint and queer creatures.

Laurelhurst Park, on the east side, is shaded with majestic firs, towering hundreds of feet in the air. Ducks and swans on Laurelhurst Lake are always a delightful attraction for the children.

Other parks conveniently located throughout the city are all-the-year 'round gathering places for young and old.

Portland the Port and Railroad Terminus

Portland, the Port and Terminus, has one of the finest fresh water harbors in the world, and is the second largest world port for export and import tonnage on the Pacific Coast. Over 1300 ships cleared from Port-



Another View in Portland's Business District

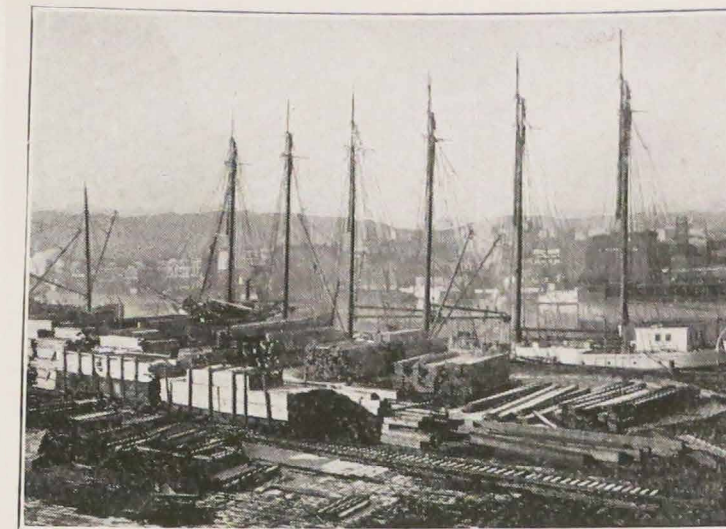
land during 1923. The port is located at the confluence of the Willamette and Columbia Rivers, one hundred miles from the sea. This position is advantageous geographically and commercially for a number of reasons. The fresh water in the harbor cleans the scales from the bottoms of ocean-going vessels, saving the cost of frequent scraping. Disasters from hurricanes and furious phenomena of nature are unknown.

Fifty-two steamship lines giving service to the principal ports of the world operate from Portland. Twenty-nine miles of waterfront within the city limits offer ample moorage space. Eleven privately owned lumber docks, eleven flour and grain docks and five general cargo docks available for sea-going vessels, and four municipal terminals, with eight docks and four slips are necessary to handle the four million tons of cargo passing through the city. Two drydocks—one of 10,000 and one of 15,000 tons capacity, are owned by the Port of Portland.

Portland the Industrial City

Portland, the Industrial City, ranks high among producers of natural wealth. The total value of the manufactured products of the State, of which a large share originates in Portland, is three hundred and seventy-five million dollars.

Portland is the largest furniture manufacturing city of the West.



Six Master Loading Lumber for the Orient at One of Portland's Busy Wharves

Lumber manufacturing is the leading industry, the Portland district comprising mills in and near the city, producing the largest amount of lumber in the world.

Large production of iron and steel products comprise an important part of the city's manufactures.

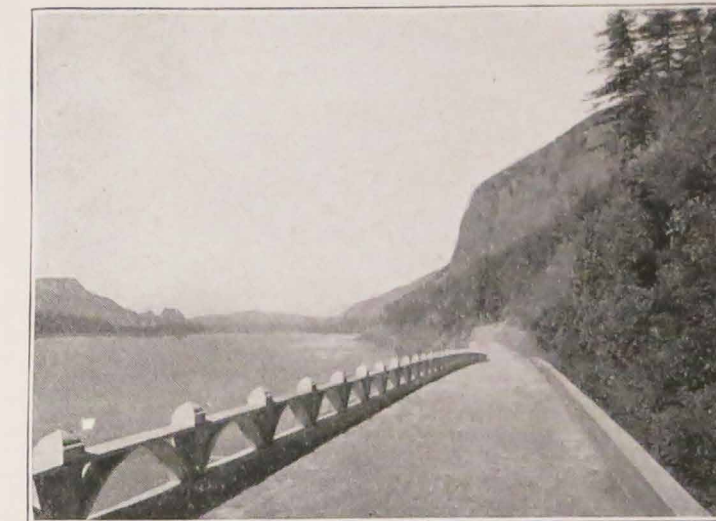
Woolen products from mills in and around Portland are distributed in every state of the Union and its possessions. The largest woolen mill west of Cleveland is located in the city. Detroit draws upon Oregon for much of its upholstering cloth for closed cars.

Portland the Financial Center

Portland, the City of Wealth, draws this name from the great influence wielded from this territory throughout the Northwest, in matters of finance and capital. Owing to its position as the gateway of the great Inland Empire of the Columbia River, the city benefits from the huge annual production of natural wealth taken out of this district. Portland is the pre-eminent bond and mortgage market of the Pacific Northwest.

Suggestions as to What to See During the First Ten Days in Portland

Visitors to the Pacific Coast will find no more delightful city in which to spend at least ten days than Portland. It is the tourist and recreation center of the Coast, and owing to its ideal summer climate, its marvelous scenic surroundings and its excellent hotels, at very moderate rates, with fine courteous service, it should be the headquarters of tourists.



A Columbia River Highway Vista

First Day

MORNING—Call at the information bureaus and get acquainted with the city and its environment.

AFTERNOON—Take trip to Council Crest and the City (Washington) Park.

EVENING—Visit the Oakes Amusement Park.

Second Day

MORNING—Go shopping. Portland has some of the best retail stores on the Coast. Visit the public market.

AFTERNOON—Take the Terwilliger Boulevard trip extending it to Beaverton and Hillsboro.

EVENING—Go out to Columbia Beach.

Third Day

MORNING—Visit the City Hall, Museum of the Historical Society at the Auditorium, Public Library and the Art Museum.

AFTERNOON—Take the Willamette Valley trip.

EVENING—May be spent in the hotel or at one of the excellent theatres.