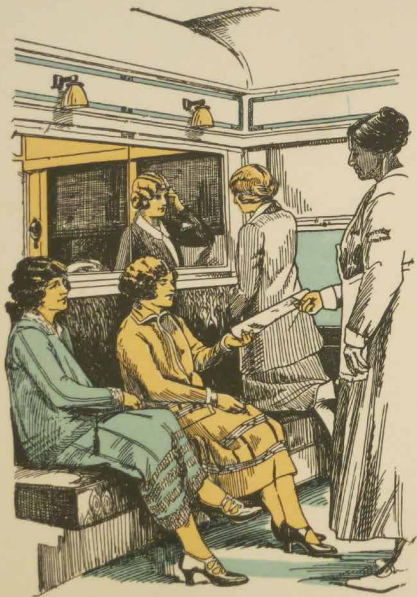


SINCE descending the beautiful passes of the Cascades to sea level, we have been traveling through lush green lowlands that are more like tropical gardens than prosaic pastures for mere cows. Except that, although pastures, they are not prosaic, and these are not mere cows, but the blooded stock of fine herds that make this part of the Puget Sound country one of the most important dairy-ing regions in the world.



CORRESPONDENCE



Women's Lounge Room on the New "Oriental Limited"