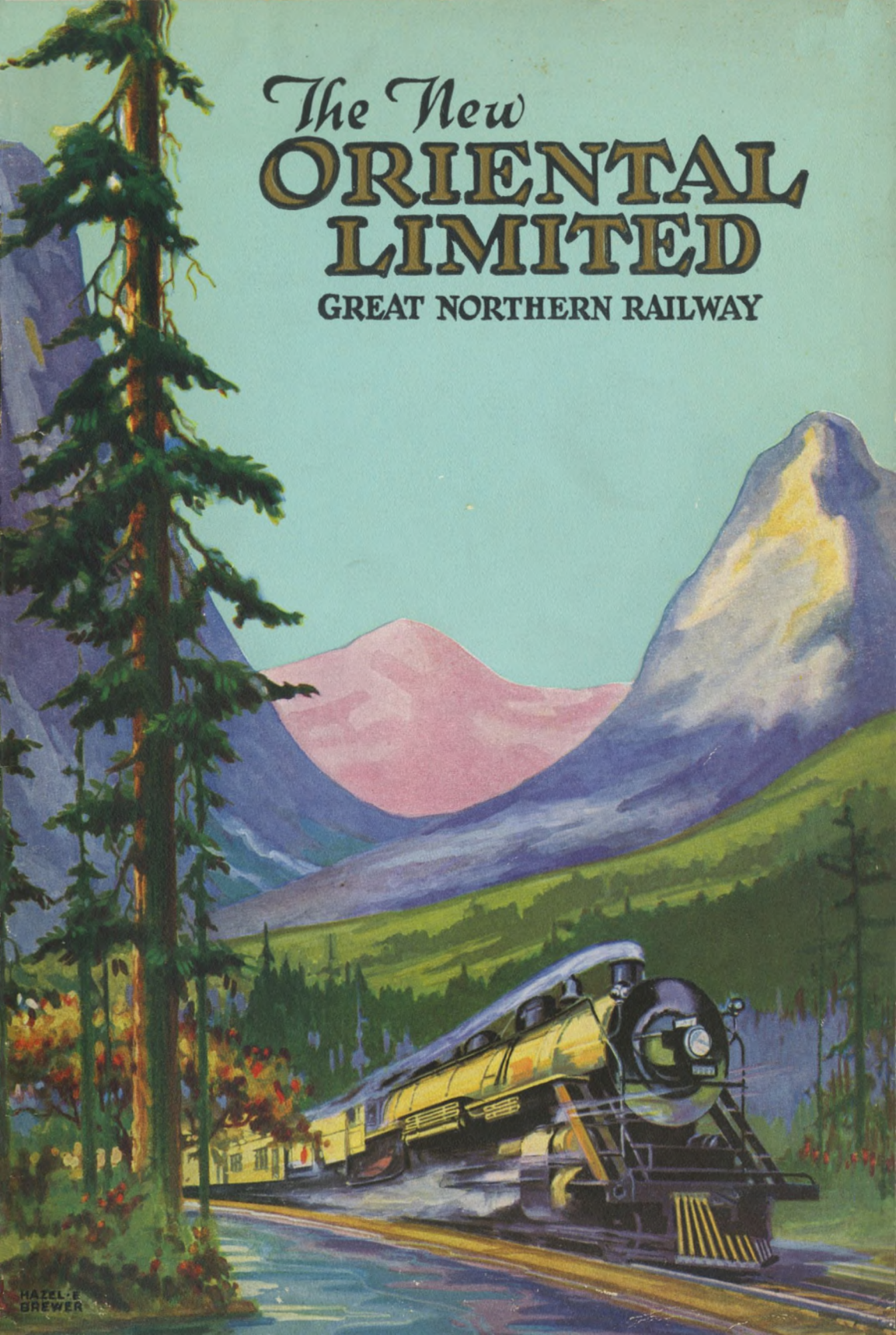
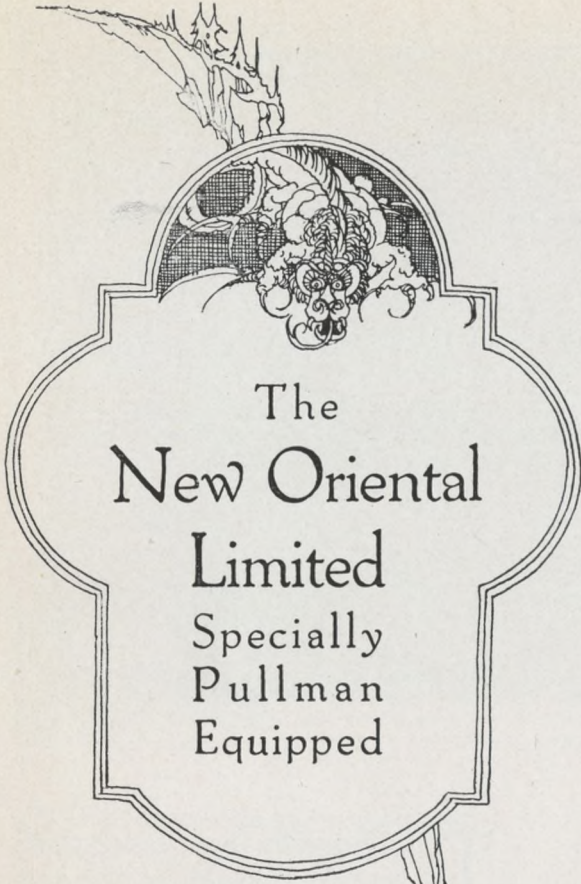
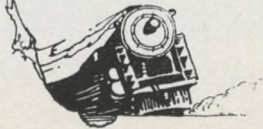


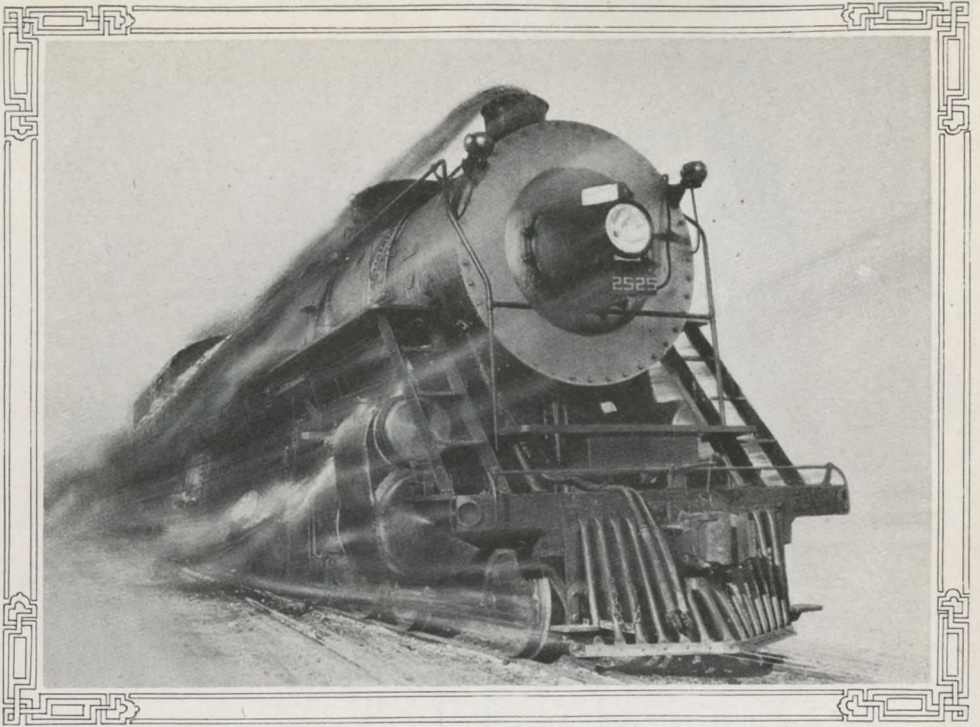
The New
**ORIENTAL
LIMITED**
GREAT NORTHERN RAILWAY





The
New Oriental
Limited
Specially
Pullman
Equipped





*The Giant Oil
Burning Locomotives*

THE Oriental's Giant Locomotive, a veritable Goliath of the rail, majestic in its immensity, towers above the puffing little yard engines. An imperceptible sign from the conductor and it is off through the maze of red, green and yellow signal lights for the open country, winging its smooth way, swift yet unhurried whether crossing the wide prairies or scaling mountain passes. Oil burning for over twelve hundred scenic miles its passengers are assured happy freedom from smoke, soot and cinders.





*Welcoming the
Oriental's Guests*

SPICK, span—shining in dark green dress the New Oriental Limited awaits the Conductor's "high ball" to galvanize into action. Brilliant with electric lights except for the softly shaded glow from the dining car tables, it radiates a spirit of traveling hospitality. The crew veterans all natty in their dark blue uniforms with silver lettered arm bands are all attention to welcome the Oriental's guests.



*The Deeply Recessed
Observation
Platform*



AN Observation platform of ample proportions, deeply recessed, comfortably shaded; provided with plenty of easy chairs and a goodly complement of friendly travelers—this is the Oriental's cheery "lookout," a place to enjoy to the utmost the travel delights of a transcontinental journey with a rapidly changing succession of colorful pictures dissolving behind as hour after hour and mile after mile slips by until the sun sinks westward and the traveler's perfect day comes to an end.

*The Women's
Lounge — A
Charming Haven
of Rest and
Relaxation*



A CONCESSION and a most important one, has been made to the feminine passenger; a daintily furnished traveling boudoir and lounge room with its decorations and furnishings in blended harmony of tones and colors. Inside a most comfortable sofa, upholstered seats for six; softly shaded lights, a toilet table and large mirror; in a convenient annex a shower bath, while in constant attendance a maid who is also a hairdresser, a manicure and a masseuse.





*View from Observation Car
Enhanced by Extra
High Plate Glass
Windows*

LOOMING up vaguely in the misty blue haze ahead is a tumbled gigantic mass whose outlines are as yet indistinguishable. Suddenly it sharpens and then bursts into view the glorious Rockies, peak upon snow clad peak until the eye is dazzled. And now picture after picture a wonderful succession of scenic panoramas glides by the Observation car windows. And these windows were built for this purpose extra high, their generous dimensions giving every opportunity for uninterrupted observation.

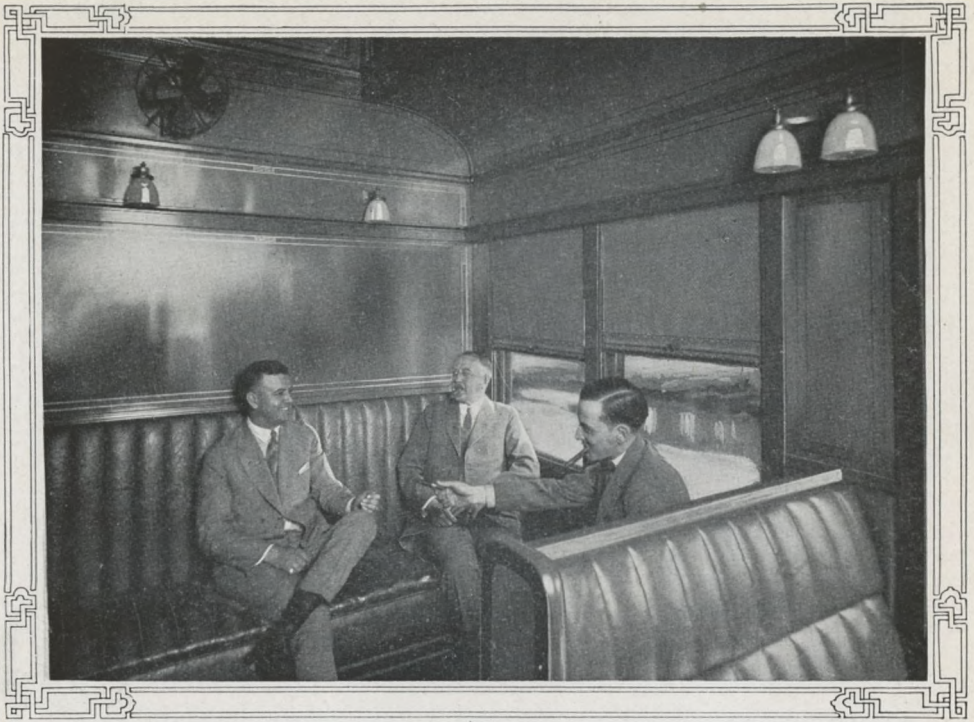




*General Lounge Room in
Observation Car*

THE Oriental's bright sun flooded Observation room is distinguished by a simple gayety of line and color. The quiet charm of its decorative treatment sets it apart as something different, distinctive. There is a refreshing absence of the old-fashioned wood finishes; instead a dainty pastel of gray green predominates, lending an atmosphere of delicacy and refinement restful in the extreme. In this car also are two compartments and a drawing room for those who want the acme of de luxe travel.





*Men's Club and
Smoking Room*

THE Observation car of the Oriental is dedicated to the comfort and convenience of its guests and to this end the deeply recessed observation platform, the extra high plate glass windows, the deeply upholstered chairs, the heavy floor carpets, the men's club and smoking room, the cozy writing desk, the women's lounge room, the buffet and incidentals such as magazines, daily newspapers, telegraphic news and stock reports, photograph albums and the daily service of tea at 4 o'clock all contribute.





Four O'clock Tea

FOUR o'clock and promptly on the minute a white clad smiling waiter appears bearing a silver platter upon which reposes a huge pot of tea, together with the usual accompaniments of service, while close behind is the maid with plates of dainty cakes. Immediately all activities cease until the occupants of the standard sleepers and the observation car have refreshed themselves. This is just another of the many delightful and unusual features of a trip on the New Oriental Limited.

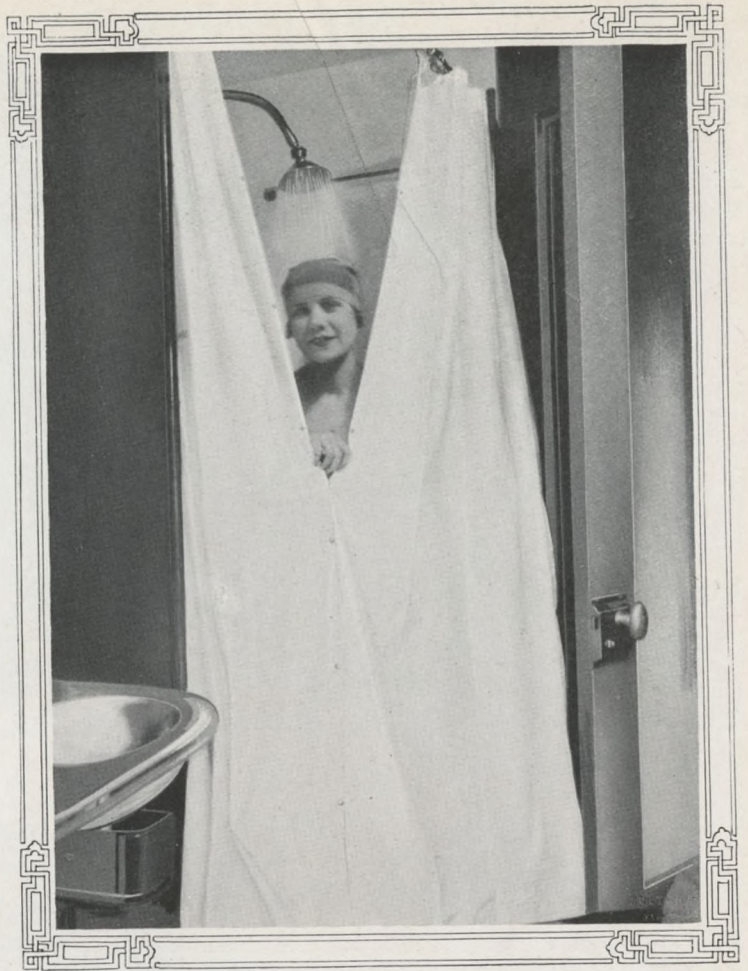


*The New Pullman
Oriental Sleeping
Cars*



PICTURE a sleeping car with a decorative treatment unlike anything heretofore attempted. The principal color employed is a soft restful gray green with furnishings in complementary tones and shades producing an effect of quiet restfulness that is satisfying and unique. Permanent partitions between the sections are carried to and across the ceiling in a series of charming colonnades.

*The Women's
Shower Bath — A
Travel Innovation*



THE modern and up-to-date woman has added to her repertoire of hygienic features and her daily toilette is no longer complete without the refreshing "shower" bath. Sensing that this feature would prove particularly acceptable on a transcontinental trip the Oriental's builders provided a place for it just off the women's lounge room.

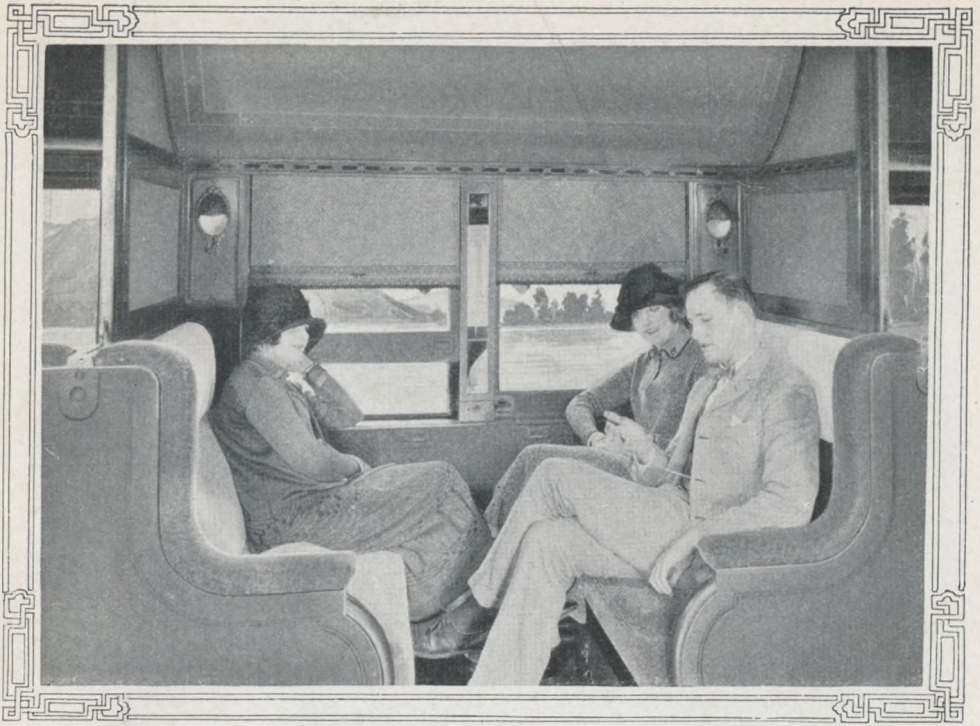




Women's Wash Room

ONLY the woman who has suffered the inconveniences of the ordinary sleeping car washroom can appreciate the roomy, charmingly decorated, well lighted retiring rooms of the New Oriental Limited affording milady all the comforts and conveniences to which she is accustomed at home. Included in their efficient appointments are an extra large mirror extending the entire width of the room, an additional full length mirror, dressing tables, plenty of boudoir chairs, a dental lavatory and many other refinements.



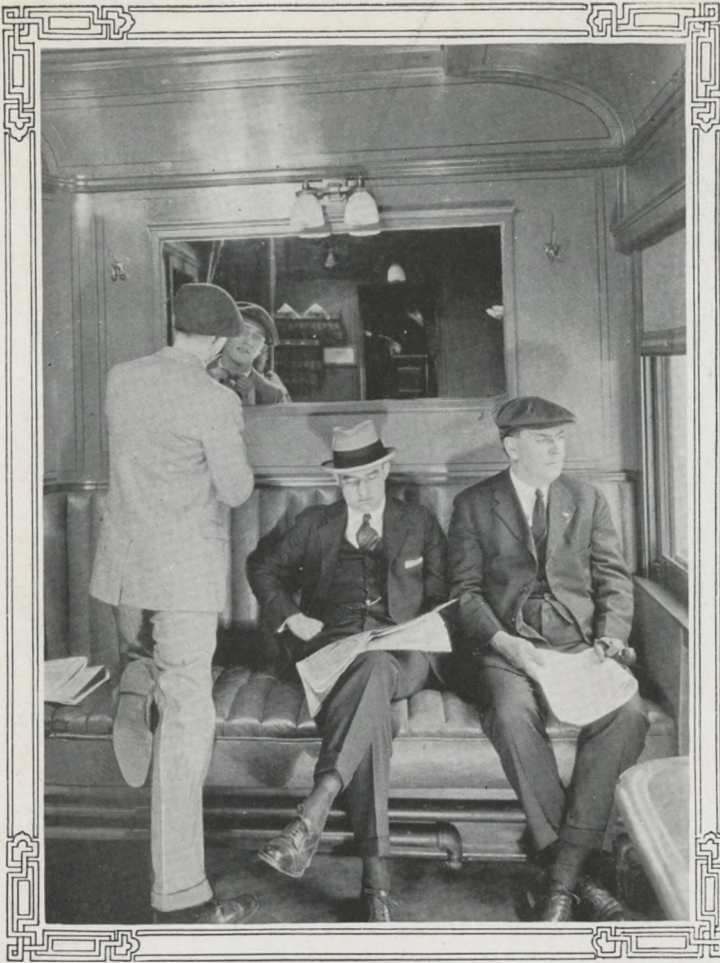


IN the midst of many passengers you are still alone in the cozy privacy and seclusion afforded by the new permanent headboards between sections of the Oriental's standard sleeping cars. Then too they assure freedom from annoying drafts. How much more enjoyable the little game of cards or the quiet chat with congenial companions. For letter writing, reading or just gazing at the scenery this privacy is doubly enjoyable.

*Compartment Effect
Produced by New
Permanent Headboards
Between Sections of the
New Pullman Oriental
Sleeping Cars*

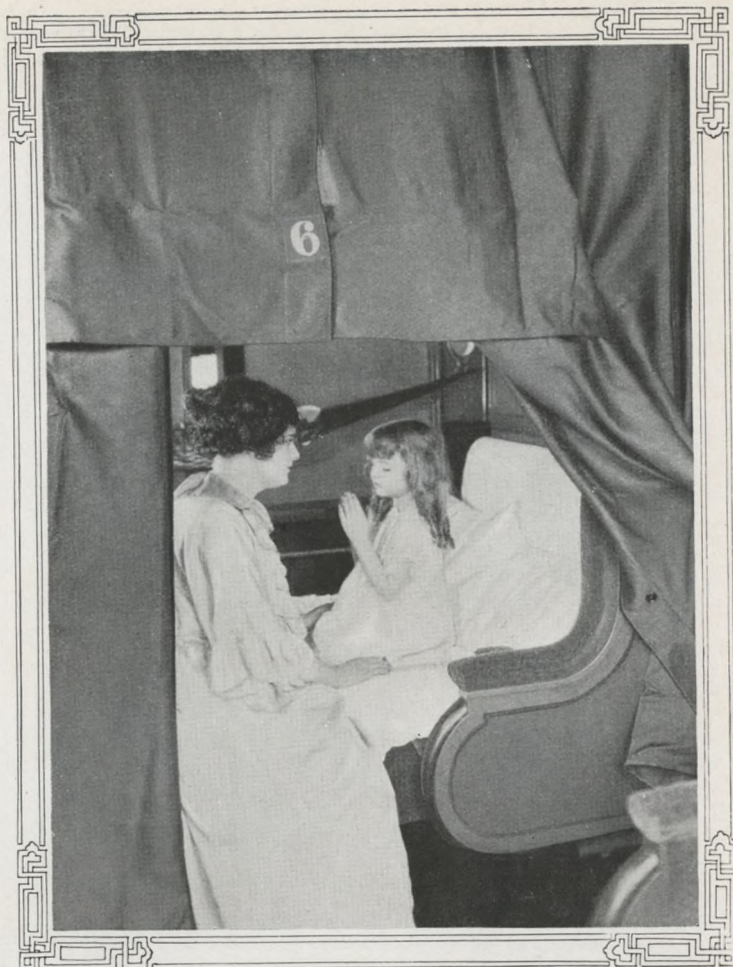


*Men's Wash
Room*



THE men's washroom on the New Oriental Limited is a roomy lounging place fitted with restful leather seats, upholstered in gray, running around two sides of the room and commanding a splendid view through the wide plate glass windows of the passing scenery. During the day's ride it is especially popular as a smoking room. Well lighted and fitted with mirrors, porcelain wash basins and a dental lavatory it affords every convenience.

*A BERTH in the New
Pullman Oriental
Sleeping Car*



IT is in its extra large, extra restful sleeping car berths that the Oriental Limited reaches its highest point of comfort. Contributions to this include practically sound proof sleepers, the new permanent headboards, individual ventilators, reading lights in both upper and lower berths, clothes hangers, concealed floor lights, electric call bells and many other innovations and conveniences.

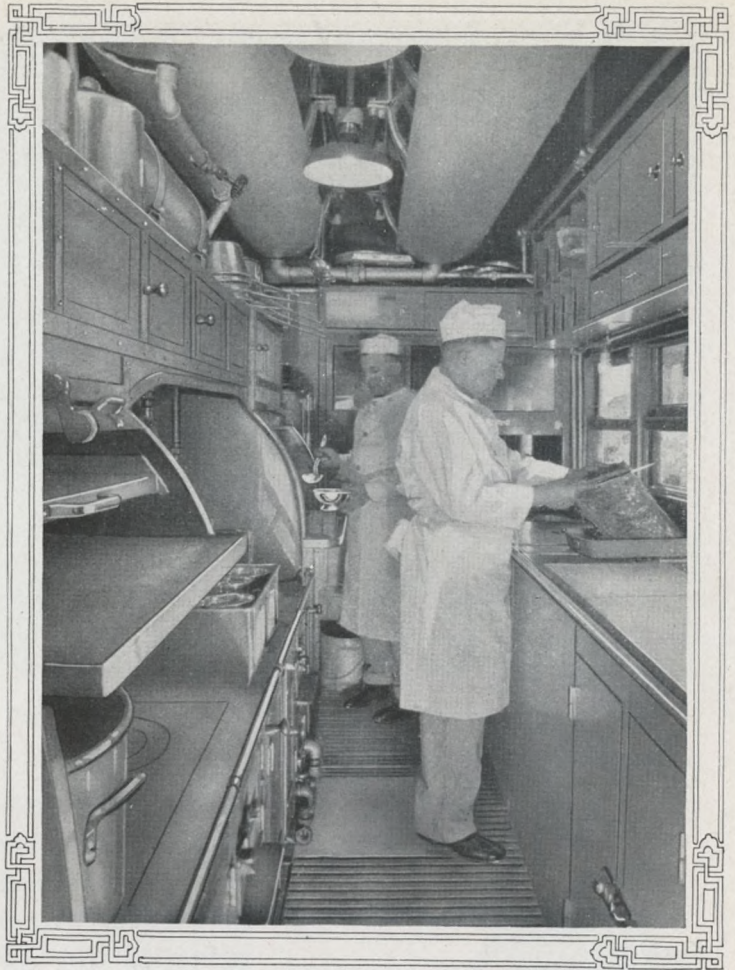


*In the Handsomely
Decorated Dining
Car*



IT is a pleasure to watch the deft way in which the quick, attentive staff of waiters, captained by an experienced steward, serve the Oriental's patrons. The menus afford an elaborate assortment of appetizing table d'hote specialties to choose from that are culinary triumphs that linger in the epicure's memory. Or you may make your selection from the always popular a la carte menu. Unique and effective ventilating devices eliminate all cooking odors.

*The Chef and His
Spotless
Kitchen*



HERE is the heart of the Oriental's diner, the spotless kitchen, presided over by a chef skilled in all the arts and mysteries of serving the traveling public to their supreme satisfaction. It is a marvel of compactness and efficiency furnished with every utensil necessary in the preparation and cooking of food. Here the chef creates from all the good things grown in the "Zone of Plenty" those dishes that earn the unstinted praise of experienced travelers.





A Dining Car De Luxe

A FLOOD of sunshine through the plate glass windows is reflected in the clean pastel walls and the shining silverware and cut glass on the tables of the Oriental's handsome dining car. It outlines sharply the furnishings of a car de luxe, a triumph of the designers' and decorators' art. Particularly noticeable is its extreme width. There is plenty of room here for the quiet efficient service of guests, that characterizes the dining car service on the New Oriental Limited. Special sleeping quarters have been provided for the crew in another part of the train thus dedicating the dining car to the exclusive service of preparing and serving meals.





The Tourist Sleeping Car

NOT everyone can afford *all* the luxuries of modern travel hence the tourist sleeping car affording a maximum of travel comfort without frills and luxuries and at a minimum cost. The Oriental's tourist cars set a new mark for accommodations of this class. They are devoid of the decorative finish and the permanent headboards between sections that distinguish the other sleeping cars and the well cushioned seats are upholstered in leather instead of plush.



*The
Barber Shop*



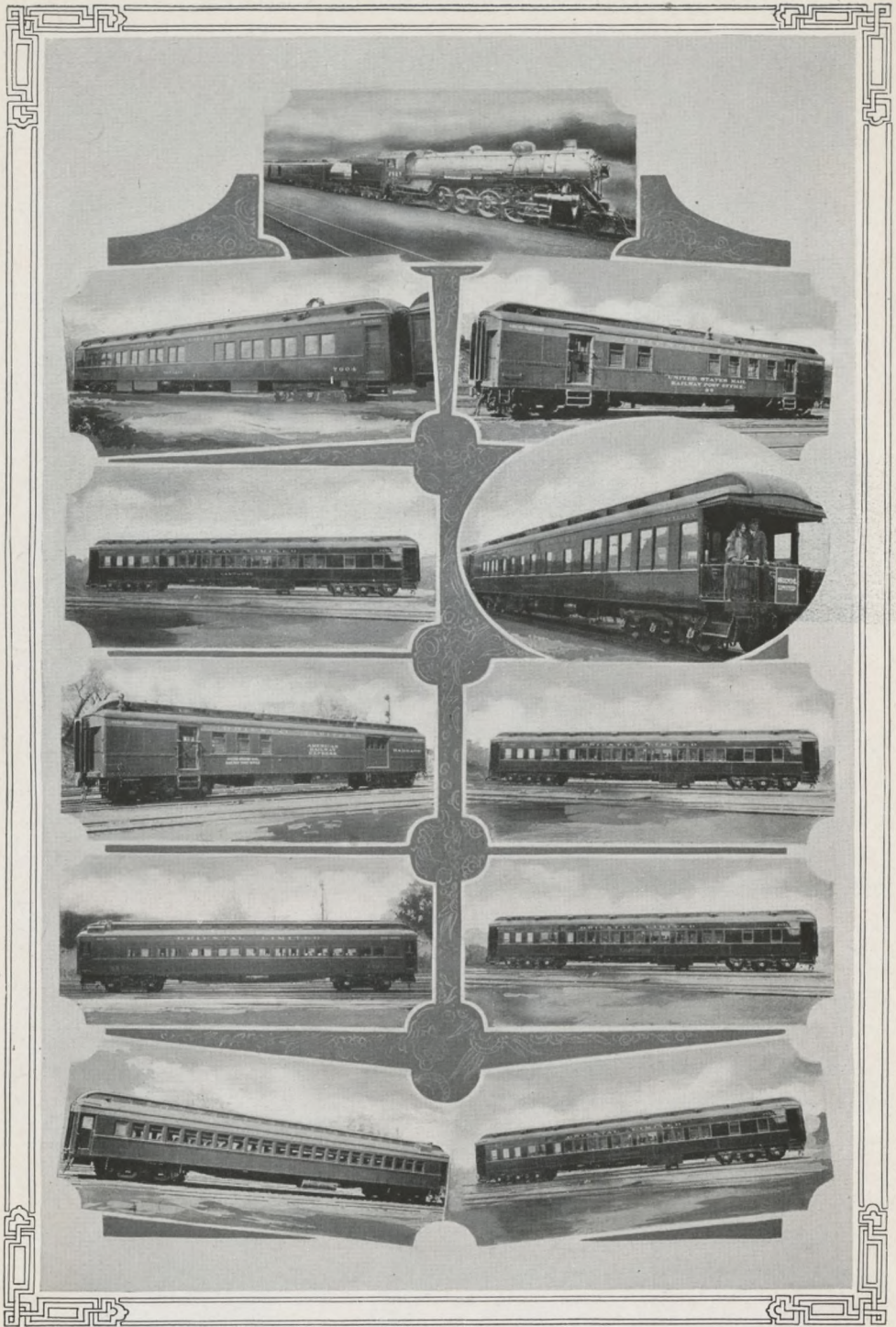
HIPPETY hop to the barber shop runs the old Mother Goose rhyme and here it is just forward of the dining car. The shop is in charge of a skilled white barber of long experience and here you may obtain all of the ministrations common to barber shops everywhere at reasonable prices. Milady may even have her hair bobbed enroute if she wishes. The barber shop also carries a complete line of toilet necessities for sale.



The Valet

NO longer is it necessary for well groomed transcontinental travelers to wait until the journey's end before restoring the well creased effect to their clothes for the Oriental's barber is also a valet who will perform this function to their satisfaction. A word to your sleeping car porter at night and he will return the clothes to you in the morning in all their pristine glory and original nattiness.

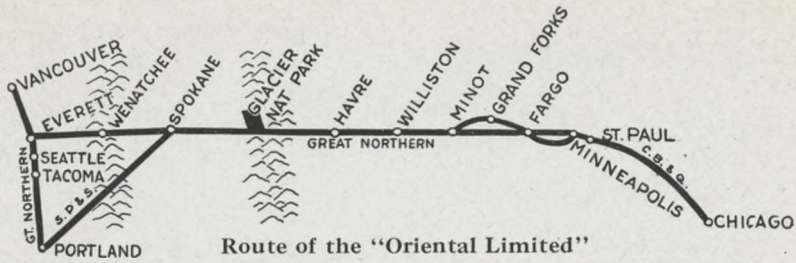




The New Steel Oriental Limited
(Exteriors)



A Pictorial Presentation of Life on the New Oriental Limited



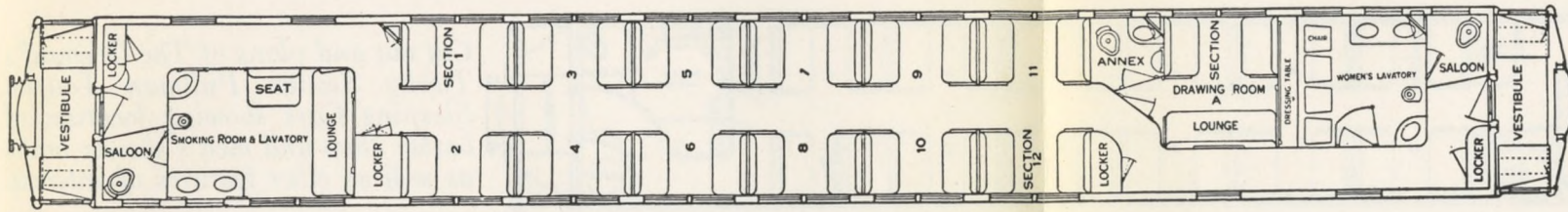
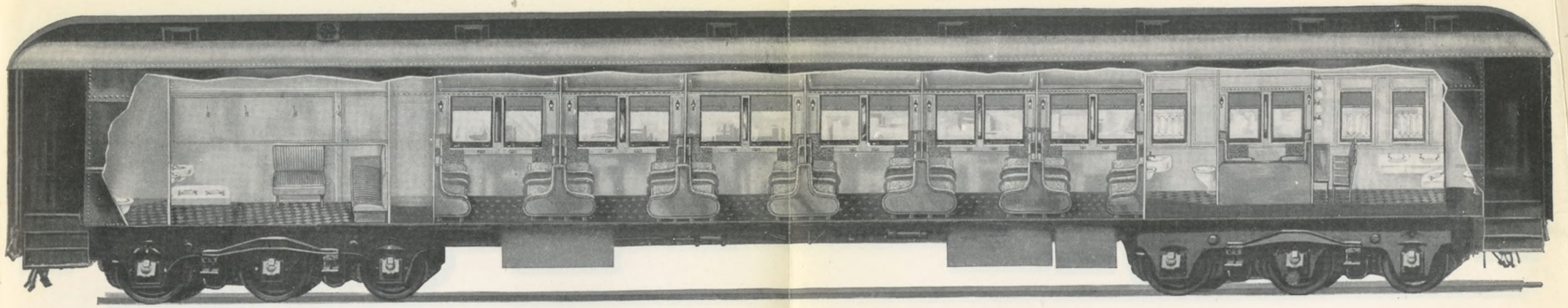
Route of the "Oriental Limited"

GREAT NORTHERN TRAVEL HEADQUARTERS

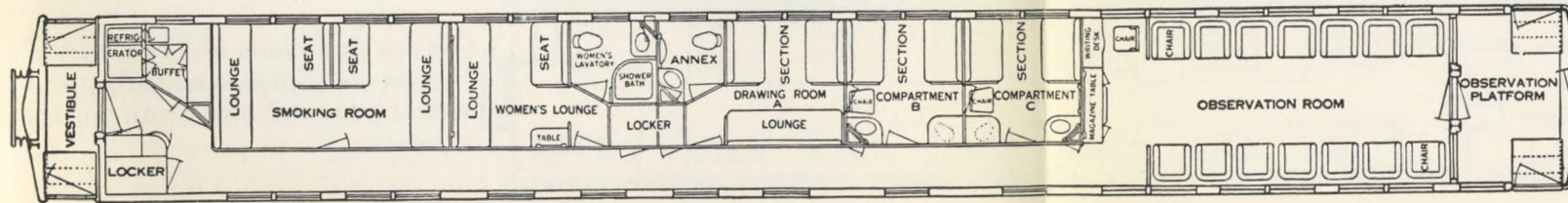
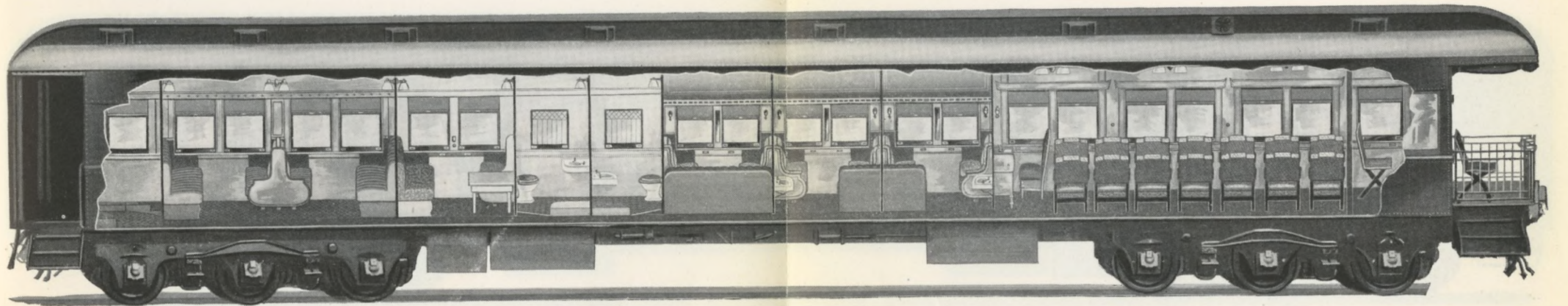
That exist for your convenience. Each one is in charge of a travel specialist and a force of competent ticket men who will be glad to show you how to get the maximum of travel comfort for your money. Avail yourself of their service. They are anxious to serve you. Call on, write, telegraph or telephone any Great Northern representative.

BELLINGHAM, WASH.	212 Kulshan Bldg.
BILLINGS, MONT.	311 Electric Bldg.
BOSTON, MASS.	294 Washington St.
BUFFALO, N. Y.	683 Ellicott Square Bldg.
BUTTE, MONT.	513 Metals Bank Bldg.
CHICAGO, ILL.	113 South Clark St.
CINCINNATI, OHIO	609 Traction Bldg.
CLEVELAND, OHIO	508 Hippodrome Bldg.
DALLAS, TEX.	1013 Southwestern Life Bldg.
DES MOINES, IOWA	305 Equitable Bldg.
DETROIT, MICH.	619 Transportation Bldg.
DULUTH, MINN.	422 W. Superior St.
FARGO, N. D.	116 Broadway.
GRAND FORKS, N. D.	Great Northern Station.
GREAT FALLS, MONT.	802 First National Bank Bldg.
HELENA, MONT.	510 Power Bldg. and Placer Hotel Bldg.
KANSAS CITY, MO.	516 Railway Exchange Bldg.
LEWISTOWN, MONT.	Great Northern Station.
LOS ANGELES, CAL.	622 Citizens National Bank Bldg.
MILWAUKEE, WIS.	812 Majestic Bldg.
MINNEAPOLIS, MINN.	524 2nd Ave. So.
MINOT, N. D.	Great Northern Station.
NEW YORK, N. Y.	516 Longacre Bldg., Broadway and 42nd St.
NELSON, B. C.	421 Baker St.
PHILADELPHIA, PA.	401 Finance Bldg.
PITTSBURGH, PA.	214 Empire Bldg.
PORTLAND, ORE.	201 Morgan Bldg.
ST. LOUIS, MO.	517 Boatmen's Bank Bldg.
ST. PAUL, MINN.	4th and Jackson Sts.
SAN FRANCISCO, CAL.	1009 Hearst Bldg.
SEATTLE, WASH.	1403 4th Ave. and King St. Station.
SIoux CITY, IOWA.	516 Nebraska St.
SIoux FALLS, S. D.	504 East 8th St.
SPOKANE, WASH.	Davenport Hotel.
SUPERIOR, WIS.	Tower Ave. and 13th St.
TACOMA, WASH.	116 So. Ninth St.
TORONTO, ONT.	202 Webster Bldg.
VANCOUVER, B. C.	607 Hastings St.
VANCOUVER, WASH.	Great Northern Station.
VICTORIA, B. C.	916 Government St.
WENATCHEE, WASH.	Great Northern Station.
WINNIPEG, MAN.	226 Portage Ave.

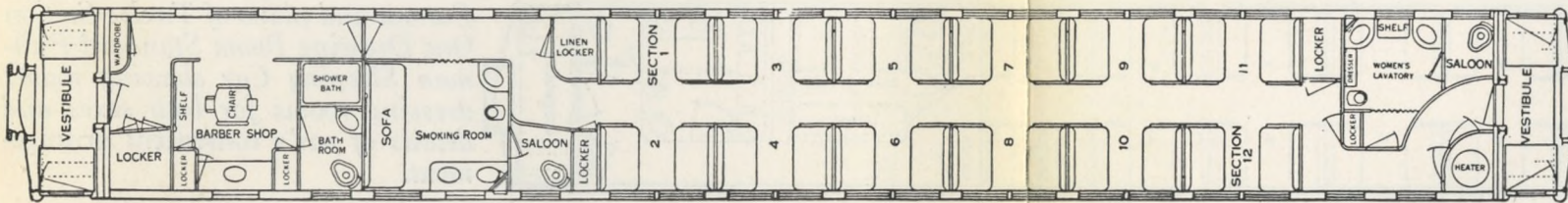
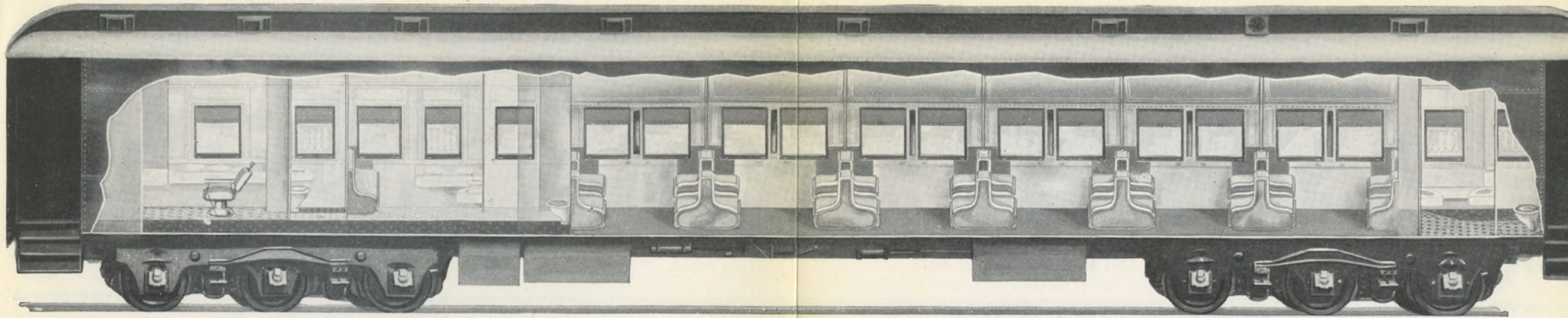
C. W. MELDRUM, Asst. Gen. Pass. Agent, Seattle, Wash.
 J. F. PEWTERS, Asst. Gen. Pass. & Frt. Agt., Helena, Mont.
 F. T. HOLMES, Asst. Gen. Pass. Agent, St. Paul, Minn.
 E. H. WILDE, General Passenger Agent, St. Paul, Minn.
A. J. DICKINSON, Pass. Traf. Mgr., St. Paul, Minn.



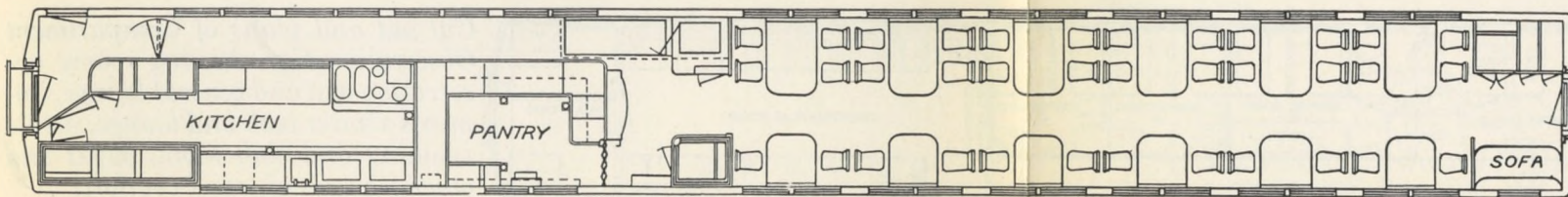
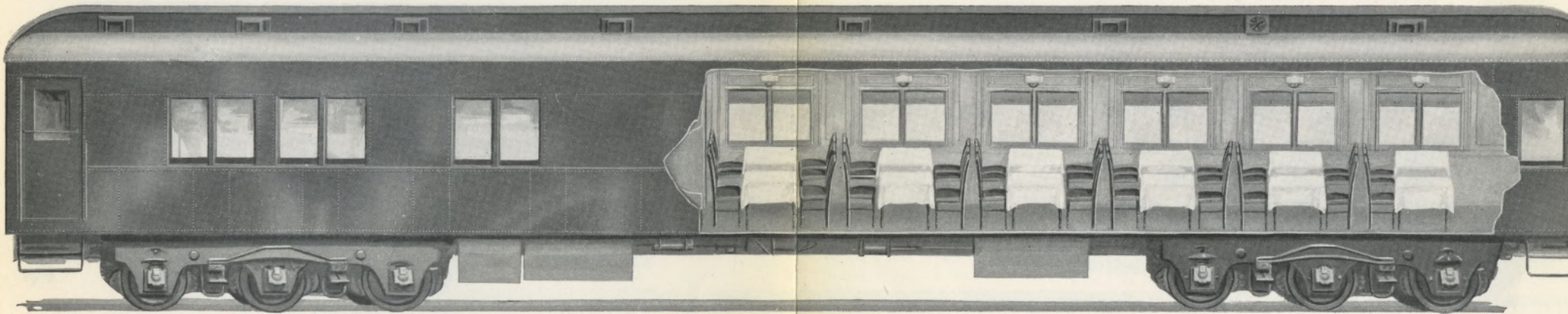
Cut out and plans of Twelve Section One Drawing Room Standard Pullman Sleeping Car showing roomy dressing rooms for both sexes and details of car's convenient arrangement.



Cut out and plans of Compartment Observation Car showing roomy observation end and general lounge, women's shower bath and lounge, men's smoking and club room, buffet and other features of travel comfort.



*Cut out and plans of The Orient
Twelve Section Pullman Tour
Sleeping Cars showing location
barber shop and men's shower bath
as well as other features of interest.*



*Cut out and plans of The Orient
Handsome Diners, seating 36 people,
showing lay out and details of construction.*

al's
rist
e of
aths
rest.

al's
ple,
on-

