



Fast Passenger and Freight Boats Link Lake Chelan's Ports

Lucerne Hotel

Lucerne Hotel (on Lake Chelan)—W. C. Rea, Manager, E. A. Sapp, Dining Room Manager.

Cottages—\$1.50 single, \$2.00 double, \$10.00 per week. Housekeeping—\$2.00; \$10.00 per week.

Saddle-horses \$2.50 per day; pack horses \$5.00 per day with guide. When over five persons are in party guide free. Board in camp \$2.50.

Motor-boat "Wenatchee" for hire at this point, \$3.00 per hour. Row boats \$1.50 per day; \$7.00 per week; 50 cents for the first hour, 25 cents for next.

Special dinners \$1.00; special lunch 50 cents; short orders 25 cents and up; lunches 25 cents and up. Store in connection. Free dancing.

Fishing, hunting and mountain trips, Gateway to Domke Lake, Emerald Park, Railroad Creek, Hart Lake, Lyman Lake, Cloudy Pass and numerous glaciers.

Getty's Camp

Getty's Camp (on Lake Chelan)—Oscar Getty, Proprietor. Cottages—2-room, furnished, \$2.00 per day; board by the week, \$3.00 per day; boats, \$1.00 per day; saddle-horses, \$2.50 per day. Trail trips a specialty, competent guide.



© L. D. LINDSLEY
Looking Up Lake Chelan

Campbell's Hotel

Campbell's Hotel, Chelan—rates \$3.25 per day single, \$3.00 each double, American plan. Rooms, tents, sleeping porches or cottages. Excellent bathing; big dancing pavilion. Fresh milk and vegetables from our own farm.

Commercial Hotel

Commercial Hotel, Chelan—Mrs. M. D. McMillan, proprietor. Brick Building, Main Street. Rates \$1.00 and up.

Valley House

Valley House, Chelan—Modern rooms, \$1.00 and 75 cents; two in room, \$1.25. One block off of Main Street. A quiet place.

Horseback-and-Camping Trips 'Round-about Stehekin

At Stehekin—the natural hub of trips—reliable outfitters during the tourist season are prepared to equip and escort visitors to the Lake Chelan country for and on horseback-and-camping trips, as long or as short as desired, to the various wonder places of the Cascade Mountains that are "reachable" from the head of Lake Chelan. For such trips these outfitters are prepared to furnish everything necessary.



© L. D. LINDSLEY
The Storm-Tossed Pine—Lake Chelan—in the Cascades

Stehekin Hotel

Stehekin, Wash., at the head of Lake Chelan on the Stehekin River. American plan—rates from \$3.00 to \$4.50 per day. Trips to all scenic points, saddle-horses, pack horses, cars operated in conjunction with hotel camping. Equipment furnished. Guide service.

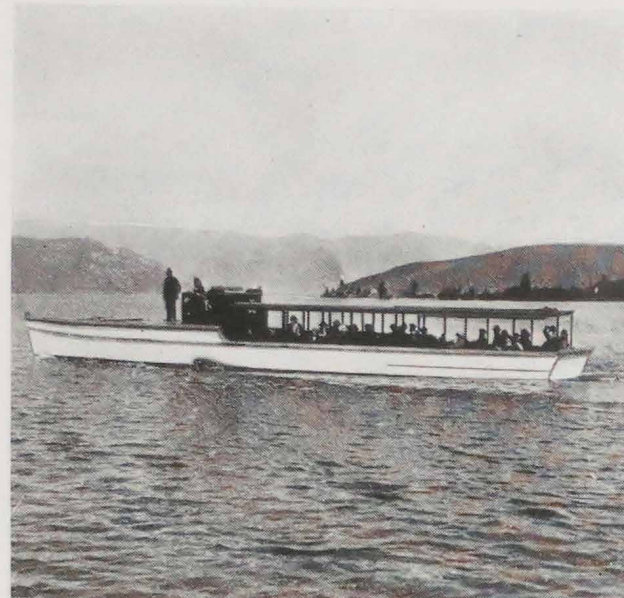
Rainbow Lodge

Rainbow Lodge (at Stehekin)—Miss Lydia George, Proprietress, 2½ miles up Stehekin River from head of Lake Chelan. Accommodations for 20 in cabins.

Rates—one in room \$2.75 per day; \$15.00 per week board and room. Two in room \$27.50 per week.

Passenger truck transportation from Stehekin dock to lodge, also to all points in valley. Makes a specialty of Agnes Falls and Gorge trip. Rainbow Falls less than half mile from lodge.

Good fishing close by in Stehekin River. Devore and Weaver pack and saddle-horses available for Bridge Creek and all back country points.



The Cascade Flyer—Lake Chelan

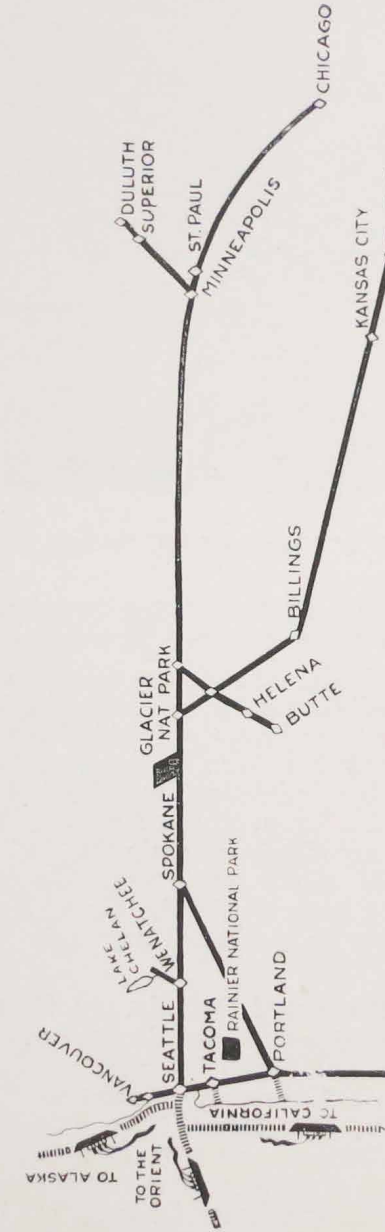
For further information regarding the Great Northern Railway's splendid transcontinental service to Lake Chelan and about the new solid steel Oriental Limited and rates, tours and stopovers, to Lake Chelan or any point in the West, inquire of any Great Northern Railway Office shown below.

TRAVEL HEADQUARTERS

BOSTON, MASS. 294 Washington St.
BUFFALO, N. Y. 683 Ellicott Square Bldg.
CHICAGO, ILL. 226 W. Adams St.
CINCINNATI, OHIO. 609 Traction Bldg.
CLEVELAND, OHIO. 508 Hippodrome Bldg.
DALLAS, TEX. 1013 Southwestern Life Bldg.
DES MOINES, IOWA. 425 Kraft Bldg.
DETROIT, MICH. 619 Free Press Bldg.
DULUTH, MINN. 428 W. Superior St.
KANSAS CITY, MO. 516 Railway Exchange Bldg.
LOS ANGELES, CAL. 716 Citizens National Bank Bldg.
MILWAUKEE, WIS. 810 Majestic Bldg.
MINNEAPOLIS, MINN. 524 2nd Ave. So.
NEW YORK, N. Y. 516 Longacre Bldg., 42nd and Broadway
PHILADELPHIA, PA. 409 Finance Bldg.
PITTSBURGH, PA. 214 Empire Bldg.
ST. LOUIS, MO. 203 Boatmen's Bank Bldg.
ST. PAUL, MINN. 4th and Jackson Sts.
SAN FRANCISCO, CAL. 1009 Hearst Bldg.
SIOUX CITY, IOWA. 516 Nebraska St.
SUPERIOR, WIS. Tower Ave. and 13th St.
TORONTO, ONT. 202 Webster Bldg.
WINNIPEG, MAN. 226 Portage Ave.
C. W. MELDRUM, Assistant General Passenger Agent

KING STREET STATION
Seattle, Wash.

A. J. DICKINSON, Passenger Traffic Manager
St. Paul, Minn.



The Great Northern "Way" to or from Lake Chelan via Wenatchee, Wash., on the main line.

(Printed in U. S. A.)

Lake Chelan

CASCADE MOUNTAINS

Go GREAT NORTHERN



© FRED H. KISER, PORTLAND, ORE.

"The Emerald of the Cascades"—Beautiful Lake Chelan



The "Liberty"—Lake Chelan



© L. D. LINDSLEY

Indian Picture Writing—Lake Chelan



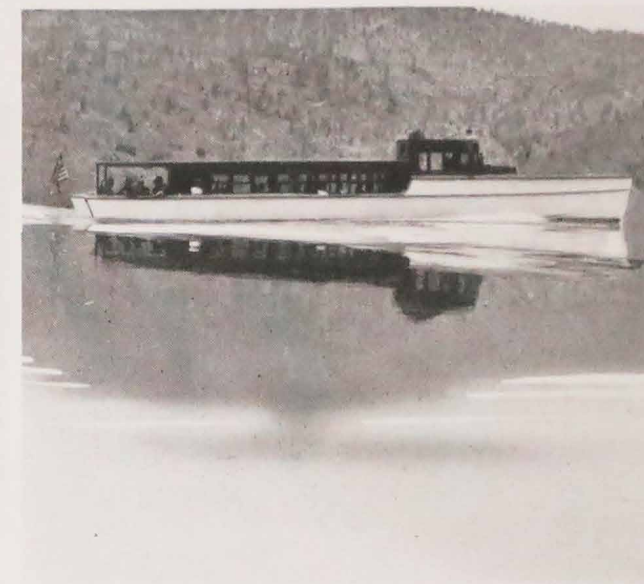
© L. D. LINDSLEY

"The Toboggan" Railroad Creek in the Cascades near Lake Chelan



© L. D. LINDSLEY

Shore Line—Lake Chelan—near Pyramid Creek



The "Victory"—a Chelan Express Boat

Lake Chelan and the Cascade Mountains

A stupendous and splendid fjord that outstretches for more than a half-hundred miles through and to the very heart of the Cascade Mountains of Washington—a fjord that is the most remarkable lake-in-the-mountains in all America—and 'roundabout the head of this lake, about Stehekin, a wonder region of the Cascades that abounds in delightful mountaineering "short jaunts," both by saddle-horse and "over trails afoot"—such is Lake Chelan and its country. Embraced within the Chelan National Forest, Lake Chelan and its environs constitute a preserve of the United States.

A Summer Playground for the People of the Pacific Northwest

Either from Seattle or from Spokane—by transcontinental train of the Great Northern Railway to Wenatchee, thence by connecting Chelan train of the Great Northern to the Lake's foot, thence by boat. From all Great Northern stations in Washington, Oregon, British Columbia and Idaho, throughout Chelan's season, summer fares to Lake Chelan and back are in effect.

A Wonder "Stop-off-Place" for Tourists Bound to or from the Pacific Northwest

Lake Chelan also is one of the most worth-while "stop-off-places" that is available to the tourist who is bound either to or from the Pacific Northwest by way of the Great Northern Railway—a "break-in-the-journey" place in interest second only to Glacier National Park. From Wenatchee on the Great Northern's transcontinental main line Lake Chelan is a side trip of about two hours. To holders of summer tourist tickets via the Great Northern a special very low Lake Chelan side trip fare is in effect.

"Chelan, the Fjord Deep in the Cascades"

The Cascade Mountains of Washington are wonder mountains. Crowned in order by the mighty domes of Mount Adams and Mount St. Helens, of Mount Rainier, of Glacier Peak and of Mount Baker, the Cascades outstretch uninterruptedly from the state's south border all of the way northward to the International Boundary. In north-central Washington and 'roundabout Glacier Peak—which but a little more than a score of miles on the northward of the transcontinental line of the Great Northern Railway rises to 10,436 feet above the

sea—the Cascades in the counties of Chelan, Okanogan, Snohomish and Skagit outspread in especial magnificence—chains of mighty spire-like peaks whose sides are densely forested with fir and cedar and pines and whose rocky pinnacles are snow-capped the summer through and, oftentimes, are crowned by glaciers. It is in this splendid section of the Cascades—in the county of Chelan—that Lake Chelan and its country lie.

Lake Chelan itself outstretches in a tremendous gorge that is the handiwork of a gigantic glacier of prehistoric times—that surpasses in depth the famed canyons of the Yosemite, of the Yellowstone and of the Colorado.

By Boat up Lake Chelan—A Cruise of Splendor

From the docks at Chelan and Lakeside an ample fleet that includes both spacious high-speed motor-boats in express through service and gas-driven boats in general passenger, freight and mail service ascends Lake Chelan to Stehekin.

Train Service to and from Lake Chelan

At Wenatchee the Great Northern's through trains connect with the Wenatchee-Oroville Line train for Chelan Station, making direct connections with annex auto-bus for Chelan and Lakeside, the

beginning of one of the most picturesque launch trips on the continent.

Outward bound from Lake Chelan, Wenatchee-Oroville Line train leaves Chelan Station daily except Sunday—with annex auto-bus service from Lakeside and Chelan—and makes connection at Wenatchee with main line trains for Everett, Seattle, Tacoma and Portland.

Note—Train schedules are subject to change; prospective visitors to Lake Chelan should supply themselves with Great Northern Railway time folders of current issue.

LAKE CHELAN BOAT SCHEDULE

Passenger Boats—July and August

Leaves Chelan Daily at 8:00 a. m. Leaves Stehekin Daily at 2:00 p. m. Excursions every Sunday during June, July, August and September.

U. S. Mail Boat (Daily Except Sunday) July, August and September

Leaves Chelan 7 a. m. Leaves Stehekin 12:30 p. m.

October to November 30

Leaves Chelan Monday, Wednesday and Friday at 7:45 a. m.

November, December, January, February, March to April

Leaves Chelan Tuesday and Friday at 7:45 a. m. Leaves Stehekin Wednesday and Saturday at 7:30 a. m.

Special boats for charter or hire at any time.

Round Trip Lake Chelan Fares from Washington, Oregon, Idaho, Montana and British Columbia Stations

From All Great Northern stations in the states of Washington, Oregon, Idaho, Montana and British Columbia, during the tourist season, special round trip excursion fares to Lake Chelan are in effect. Under these fares tickets are sold daily from June 1st to September 15th with final return limit of October 31st.

Special Lake Chelan Side Trip Fare Available to Holders of Summer Excursion Tickets

To holders of round trip summer excursion tickets, via the Great Northern Railway, a special side trip fare of \$6.65 from Wenatchee via rail and boat to Stehekin and return is available daily during the tourist season up to and including September 15th. Side trip tickets may be purchased at Wenatchee.

Hunting Trips

Trips after big game may also be arranged for. Guides will pilot sportsmen deep into the fastnesses of the Cascades to hunting grounds where bear and mountain goat shooting is prime.

Moore Inn

Moore Inn—picturesquely situated on the promontory of Moore's Point and at the foot of the Canyon of Fish Creek, some six miles down-lake from Stehekin—affords accommodations at the head of Lake Chelan. The Inn comprises a main hotel, an annex bungalow of open-air sleeping rooms, and an extensive farm for the supplying of its table—altogether a very pleasantly planned and managed resort. Moore Inn on the American plan is conducted at the rate of \$4.50 per day, with weekly rate of \$24.50.

Lucerne House

Lucerne House—a small but pleasantly situated resort—affords still further accommodations. Lucerne House stands at the mouth of Railroad Creek, about eight miles down-lake from the Stehekin.