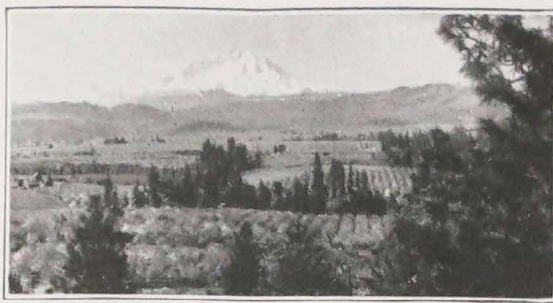


In Picturesque Vancouver, B. C.



A Shasta Route Scene, South of Portland

Inland Empire and the largest city between the Rockies of Montana and the Cascades of Washington; it is set down in the midst of pine-clad mountains, waterfalls, lakes, apple orchards and flowers.

From Spokane California passengers may avail themselves of the "Short Cut" to Portland via the Spokane, Portland & Seattle Ry., the "North Bank" route from Spokane. Following the north bank of the Columbia River for over two hundred miles, a trip full of scenic surprises, unfolding an unending panorama of beautiful pictures.

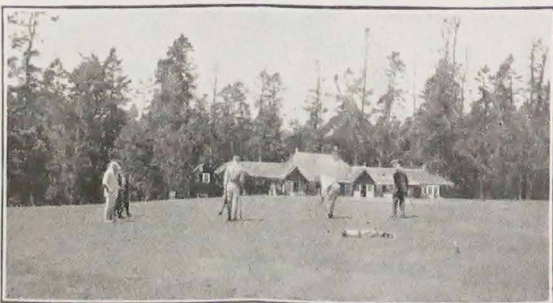
And now comes the Wenatchee Valley, a generation ago a brush covered desert of volcanic ash, today, "The Land of the Big Red Apple," its fruitful orchards covering the Valley from end to end and rising gently tier upon tier about the city of Wenatchee.

The crossing of the main range of the Cascade Mountains is a fitting climax to the westbound run.

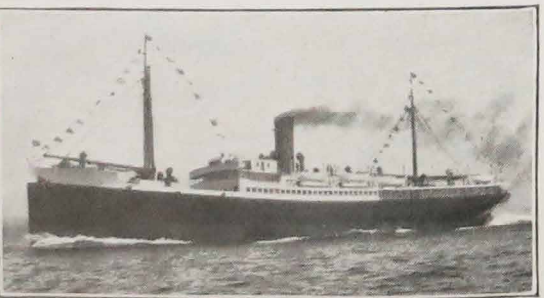
For ten miles the train mounts steadily upward through the shadows of the winding Tumwater Canyon. On either side of this narrow defile the mountain slopes tower steeply upward, thickly forested with firs, hemlocks, spruce and cedar, while far above the never melting snow lies in the shadowed crevices of the towering peaks. Through this tremendous cleft in the Cascades, the roaring green Wenatchee River tumbles and foams in a mad race.

From the summit of the Cascades at Cascade Tunnel, following the lofty shelves and horseshoe curves, the train descends through the wonderful Tye River Canyon to Scenic Hot Springs, thence to Skykomish, and thence along the sparkling Skykomish River past mile-high Mount Index to Everett and Puget Sound. Scarcely less interesting is the run into Seattle along side the sound, thence to Tacoma, and on to Portland.

The Great Northern Railway has published a handsomely illustrated booklet picturing the attractions of



Golf is a Year Round Sport in the Pacific Northwest



Coastwise Steamer

The Great Northern Way to California via Glacier National Park and the Cascades described herein. This booklet is called "The Scenic Northwest" and it will be sent free upon application to any representative named on the following page.

### The New Oriental Limited No Extra Fare

It is in the matter of train service to California via the cities of the Pacific Northwest that the Great Northern Ry. particularly excels, for the Great Northern is the route of the New Oriental Limited "As wonderful as the country it serves." This train of superlative service is complete in every detail—dependable, delightful, different.

Among the innovations and travel conveniences of this specially Pullman equipped steel flyer may be mentioned: Shower baths for men and for women, a barber shop with valet service, a smoking and club room for men, a lounge room for women, extra large dressing rooms for women in sleeping cars; permanent headboards between sections of the standard sleepers insuring privacy and freedom from drafts; a ladies' maid, manicure, hairdresser and masseuse, a well stocked buffet, 4 o'clock tea, magazines, newspapers, telegraphic news bulletins and stock reports and a host of other features all designed to make your trip one that you will remember with pleasure.

### "The Glacier Park Limited"

The Great Northern Railway also operates another good steel train Pullman equipped from St. Paul and Minneapolis to the Pacific Northwest—the Glacier Park Limited, equipped with standard and tourist sleeping car, dining car and day coaches.

### Great Northern Dining Car Service

The Great Northern Railway is proud of the character of its dining car service. Meals are selected from the finest the market affords and come fresh from the producing centers enroute. In addition to popular a la carte menus, patrons are offered special vegetable and fish dinners at 75 cents, special table d'hote dinner and luncheon at \$1.00, baked individual chicken pies at 75 cents; club breakfasts at 40 cents to \$1.00 and chicken and beefsteak dinners at \$1.50.

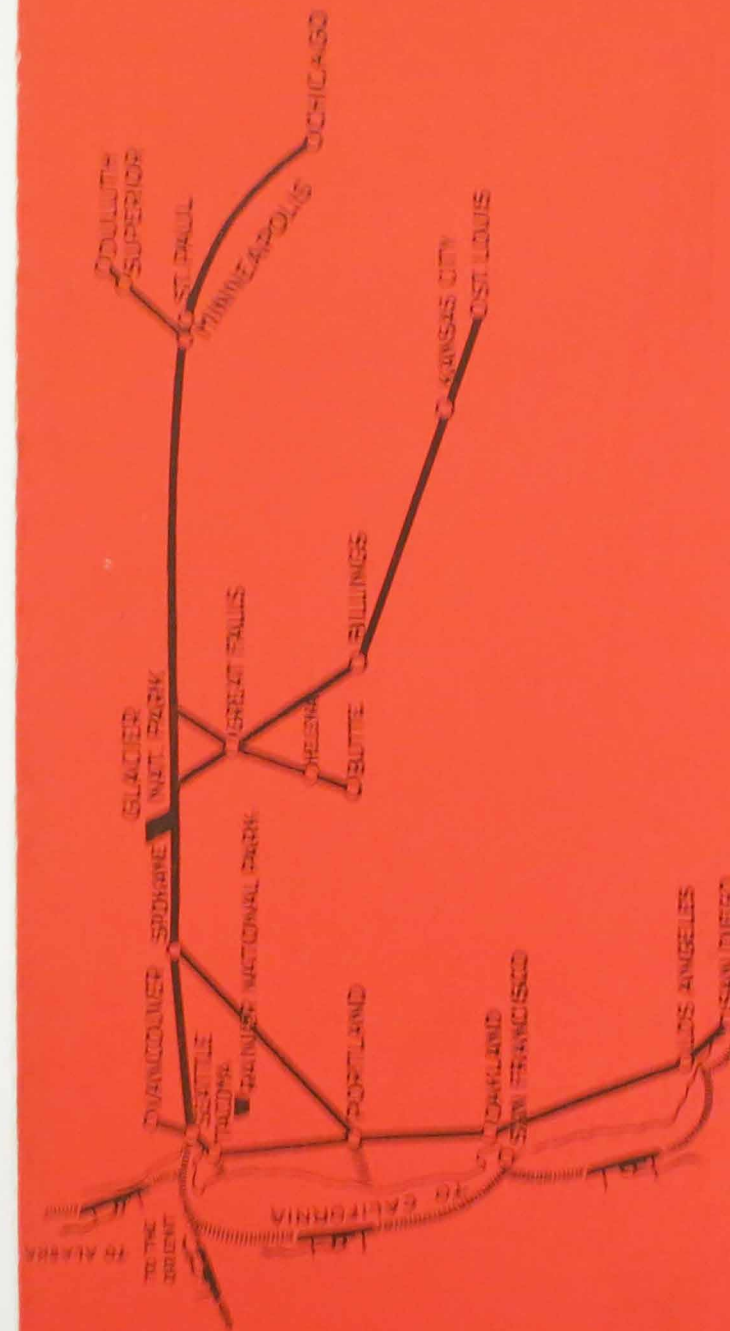


The Women's Shower Bath, A New and Popular Travel Innovation on the New Oriental Limited

For Further Information Regarding the Great Northern Railway's Splendid Transcontinental Service to California via Glacier National Park and the Pacific Northwest and about the New Steel Oriental Limited and Rates, Tours and Stopovers, to any point in the West Inquire of any Great Northern Railway Office shown below.

BOSTON, MASS.	294 Washington St.
BUFFALO, N. Y.	683 Elliott Square Bldg.
CHICAGO, ILL.	216 W. Adams St.
CINCINNATI, OHIO	609 Traction Bldg.
CLEVELAND, OHIO	508 Hippodrome Bldg.
DALLAS, TEX.	1013 Southwestern Life Bldg.
DES MOINES, IOWA	425 Kraft Bldg.
DETROIT, MICH.	619 Price Press Bldg.
DULUTH, MINN.	428 W. Superior St.
KANSAS CITY, MO.	516 Railway Exchange Bldg.
LOS ANGELES, CALIF.	716 Citizens National Bank Bldg.
MILWAUKEE, WIS.	810 Marquette Bldg.
MINNEAPOLIS, MINN.	524 2nd Ave. S.
NEW YORK, N. Y.	516 Lippincott Bldg., 42nd and Broadway
PHILADELPHIA, PA.	409 Finance Bldg.
PITTSBURGH, PA.	214 Empire Bldg.
ST. LOUIS, MO.	203 Boatmen's Bank Bldg.
ST. PAUL, MINN.	4th and Jackson Sts.
SAN FRANCISCO, CALIF.	1009 Hearst Bldg.
SPRINGFIELD, IOWA	516 Nebraska St.
SUPERIOR, WIS.	Union Station
WASHINGTON, D. C.	203 Webster Bldg.
WINNIPEG, MAN.	226 Portage Ave.

E. H. WILDE, General Passenger Agent  
F. T. HOLMES, Assistant General Passenger Agent  
A. J. DICKINSON, Passenger Traffic Manager  
St. Paul, Minn.



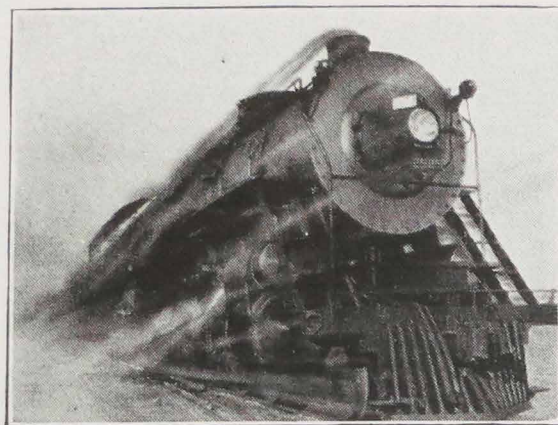
# To California



Go Great Northern

Via the Scenic Northwest



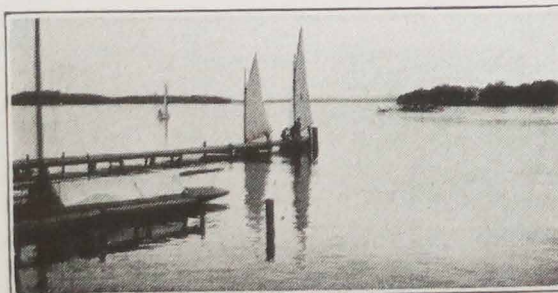


*New Giant Locomotives Oil Burning for Over 1,100 Scenic Miles that Speed the Oriental Limited Through from Chicago to the Pacific Northwest*

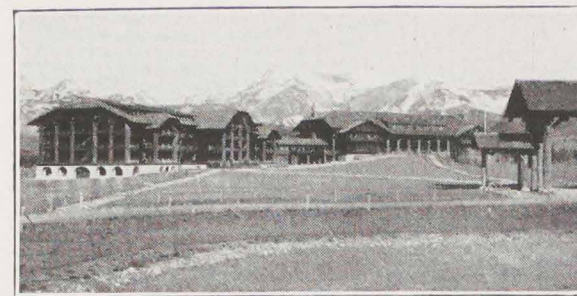
## The Great Northern Way to California

To the California visitor in search of a new variety of scenery and a more interesting and diversified route on the annual pilgrimage to or from the land of sunshine and flowers we offer the "Great Northern Way" with the longest cinderless mileage of any railroad in the Northwest.

This route makes a strong appeal to the transcontinental traveler, because in addition to its numberless scenic attractions comprising the glorious towering mountain peaks of the Glacier Park Rockies, the inspiring Cascades of Washington—an unending panorama



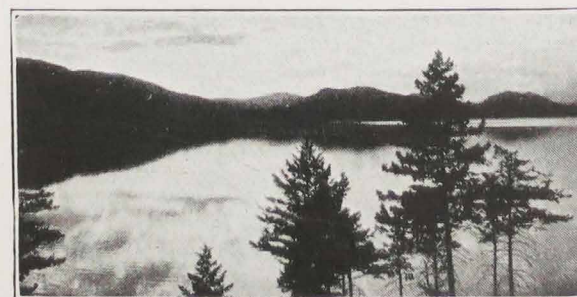
*In Minnesota's Ten Thousand Lakes Region*



*Glacier Park Hotel as Seen from the Car Window*

of evergreen forests interspersed with lacy waterfalls, hurrying streams, lakes and orchards with the tang of autumn in the air—the smiling countryside, a riot of gorgeous coloring; it takes the visitor also through the charming and hospitable northwestern cities of Spokane, Seattle, Tacoma and Portland, anxious to show you what real western hospitality is and eagerly offering a choice of attractive and interesting sights; things to see and do in a mild winter climate where the outdoors is always green, and golf is a year round sport. And your ticket permits liberal stop-overs at all of them.

As an added attraction the Great Northern Railway offers every California visitor whose ticket reads over its line, a free side trip to that picturesque bit of Britain on the shores of the Pacific—Vancouver—British Columbia's largest city, a municipality abounding in tourist attractions. The trip from Seattle or Everett to Vancouver on the Great Northern Railway's coast line is one of great charm as the tracks parallel the



*Whitefish Lake*



*Interior View Handsome New Diners in Service on The New Oriental Limited*

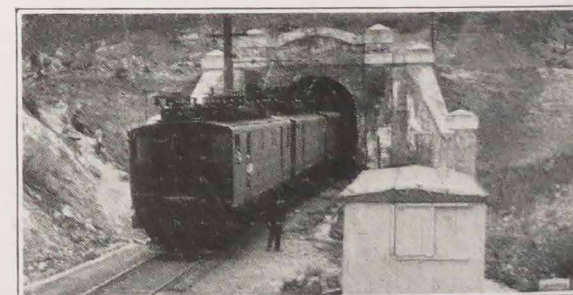
blue waters of Puget Sound with interesting marine views available nearly all the way.

When the passenger is ready to resume the journey to California a choice of rail or water is afforded, each trip one of beauty and allurements. The rail journey is via the famed Shasta Route through a tremendous scenic country while the ocean trip is a delightful, invigorating voyage down the blue Pacific aboard one of the Admiral Line's handsome coastwise vessels. An interesting vacation in itself.

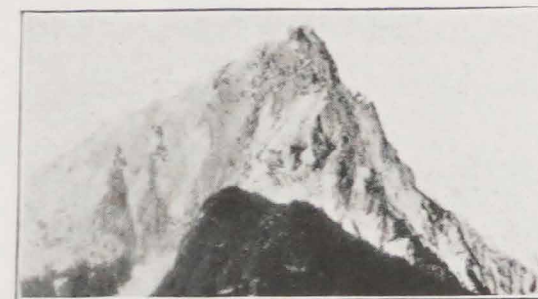
It is impossible to exhaust the beauties and attractions of this country in one visit which is the reason California tourists are specifying "Great Northern" in at least one direction, year after year.

### Across the Scenic Northwest

The westward ride over the Great Northern Railway from Chicago, St. Paul, and Minneapolis to Spokane, Seattle, Tacoma and Portland, across the Rocky



*Electric Locomotives Haul Great Northern Transcontinental Trains Through the Cascade Tunnel*



*Mt. Index in the Glorious Cascade Mountains of Washington*

Mountains, by way of Glacier National Park, and over the Cascade Mountains is one of the most interesting rides by rail in all America.

Leaving the Twin Cities the Lake Park Region of Minnesota is traversed, where the ten thousand lakes of "sky-blue water" are, and the Red River Valley, the bed of ancient Lake Agassiz of the dim past after the Ice Age; during the past half century the home of "No. 1 Hard" wheat, and now diversifying her agricultural endeavors.

Then westward across the high plains of northern Montana, toward the Rocky Mountains and Glacier National Park. The ride across Montana's wide plains where vast sweeps of open country everywhere meet the eye, and the sunshine-saturated, clean air is glorious, is a novel one. These plains, today fast developing into an agricultural empire, are rich in romance. Much stirring Indian-fighting took place hereabouts in frontier



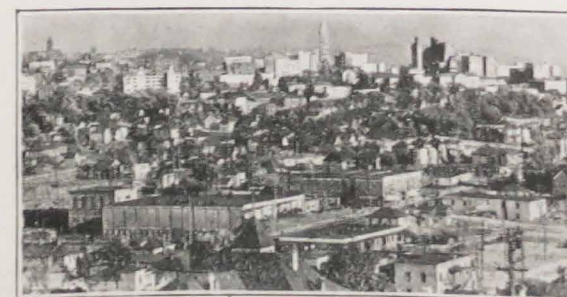
*4 O'clock Tea, a Feature of Service on the New Oriental Limited*



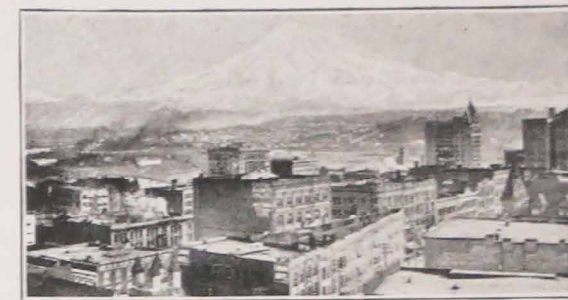
*In Spokane, Hub of the Inland Empire*

days, and later on this was the land of the Montana long-horn and the cowboy. Cabins and "falsefronted" stores of the cattle days are yet to be glimpsed, relics of the vanishing old West. The historic Missouri River—"The Big Muddy," in the old steamboat days the route of many big boats bound to old Fort Benton laden for the frontier military posts and the Helena "diggings"; the Fort Peck Reservation, where 1,800 Assiniboiné and Yankton Sioux, many of whom took part in Sitting Bull's campaigns, nowadays are thriftily farming; the battlefield at Chinook, where Chief Joseph met defeat; the Blackfeet Reservation where the "400" of the North American Indians, the one-time landlords of Glacier National Park, dwell, these are interesting things to see across Montana's plains.

Up from the plains, ahead of the train rise abruptly the mighty peaks of the main range of the Rocky Mountains, the outposts of Glacier National Park.



*Bird's Eye View of Seattle, the Seaport of Success*



*Tacoma, the City with a Mountain in Its Dooryard*

The tremendous mountainland of Glacier National Park sits high up in the splendid Rocky Mountains of northwestern Montana, on and about the Continental Divide. Glacier Park's mountains outstretch from the Great Northern's track all the way northward to the Canadian border, and from the reservation of the Blackfeet Indians westward to the Flathead River, mountainland that's 1,525 square miles in extent.

From Rexford to Bonners Ferry, a hundred miles on the main line of the Great Northern Railway, the train runs through the Canyon of the Kootenai, following every curve in the river. The coloring of rock, water and sky is the despair of artists. The delicate bewildering green of the ice stream, the soft greens and yellows of the foliage, the reds and blues and purples of the jagged rocks, canopied by a sky of dazzling blue and clouds of snowy white, make up a panorama of extraordinary beauty.

Spokane, Wash., is a most delightful place to stop off at. It is a modern metropolitan city, the hub of the



*Portland from Council Crest*