


THE PACIFIC NORTHWEST

A Country of Rare Beauty . . Mountains, Rivers, Forests and Seashore

A GREAT VACATION LAND




UNDER the pressure of modern life, with business, industrial, household and school demands, vacations are no longer luxuries, but are more and more necessary to all.

In no section of our country has Nature been more generous with her invitation to the enjoyment of the great out-of-doors or more prodigal in the provision of rich and delightful spots, with climatic excellence, than in the Pacific Northwest.

The purpose of these pages is briefly to describe, principally by pictures, some of these districts, the routes thither and points of attraction en route.


Spokane -- Portland




Some of the choicest scenery in the Northwest is enjoyed on the trip between Spokane and Portland on limited trains of the Spokane, Portland & Seattle Railway.

Eastern passengers enjoy the advantages of the well famed air-conditioned limited trans-continental train service of the Burlington, Northern Pacific and Great Northern Railways between Chicago, St. Paul - Minneapolis and


Portland, leaving Spokane and Portland in the evening. Express trains make the day trip between these cities.



The scenery of the mighty Columbia River, followed for 300 miles in Washington and Oregon by these trains between Spokane, Portland and the Pacific Ocean, is of surpassing beauty, variety, magnitude and extent. The colorful and varied scenery along this wonderful river challenges the finest, particularly where the great waterway cuts its course through the barrier of the Cascade Range. The beautiful panoramas of water, sky and evergreen forest, of roaring waterfalls, snow-capped peaks, rocky crags and gorgeous cloud effects make a composite which is never forgotten.



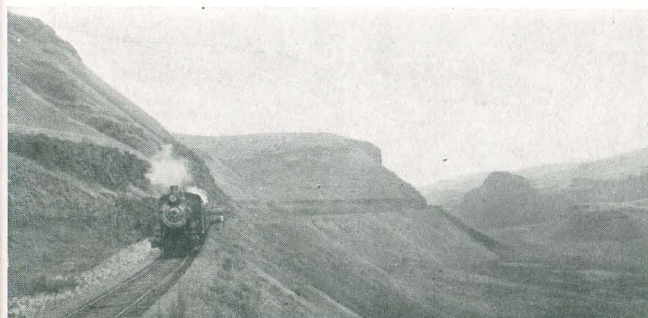
Great indeed is this spreading picture among the wonders of the Pacific Northwest, while full of romance is the history of the aborigines, the explorers, *voyageurs*, soldiers and pioneers, as is the later development of the country.



Spokane, 1900 feet above the sea, with an invigorating climate, is the capital city of the wonderful Inland Empire. In its



SPOKANE



DEVIL'S CANYON



SPOKANE, PORTLAND AND SEATTLE RAILWAY

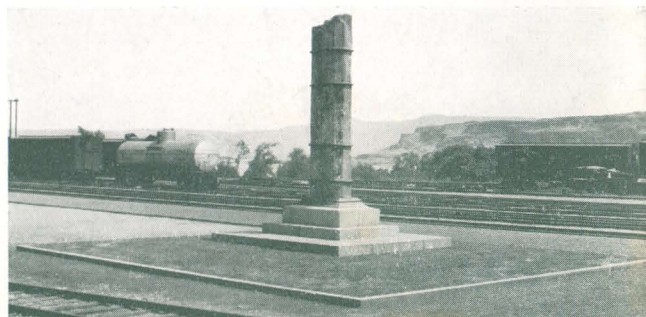
A Vacation Land Railway



CELILO FALLS, WISHRAM



CROOKED RIVER CANYON



MONUMENT TO EXPLORERS, PIONEERS, WISHRAM

heart is the great waterfall of a mountain river, along its broad streets are fine hotels, commercial establishments, beautiful homes and parks, while in its environs are forests, mountains and crystal lakes.

The traveler on this line can trace the slow and painful progress of Lewis and Clark and Astor's men along their weary way to the Columbia and the Pacific—and their firm claim to an empire for America.

Leaving Spokane the line passes on to a great plateau, skirts grain districts, small lakes, through rock cuts, devil's canyon and tunnels to the walls of the Snake River Canyon, which it descends by easy grade to the great Columbia River at Pasco, there crossing it.

Cascade Mountains—Columbia River

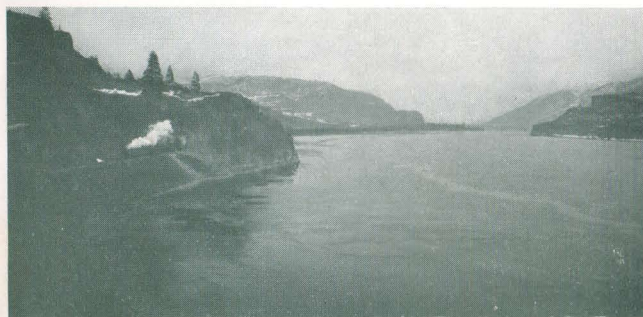
From Kennewick to Vancouver, Wash., the north bank of the Columbia River is followed through the very heart of the Cascade Mountains.

At Wishram, near the site of the ancient Indian village of that name, are Celilo Falls, crossed by the bridge of the Oregon Trunk Railway, which leads to Central Oregon, a district of charm and satisfaction to the lover of mountains, forests, lakes and fishing.

West of Wishram the great country of the Cascade Range is traversed for 70 miles to Cape Horn. The chief glory of this district is Mt. Hood, one of the most perfectly formed snow peaks in the world, towering 11,225 feet from a foreground of wild flowers, lakes, streams and forests, which on account of its accessibility, is a mecca for climbers. Splendid views of it may be had between Wishram and Hood.

Near Northdalles are the Dalles of the Columbia River, where numerous islands of rock force the great volumes of water through narrow channels, which gave great tribulations to Lewis and Clark and Astor's men.

The foot of the mountains reaches the track along the river shore, and forests of pine and fir clothe their lower levels. Bingen-White Salmon, Carson and Stevenson are good stopover places for visits into the fishing and mountain resort districts. At these and other stations are splendid



COLUMBIA RIVER NEAR LYLE

SPOKANE, PORTLAND AND SEATTLE RAILWAY

Follows the Columbia River Over 300 Miles



vantage points for viewing the wonderful mountain and river scenery. At the head of the White Salmon Valley stands Mt. Adams, altitude 12,307 feet.

The country around North Bonneville was the scene of Indian troubles in 1856, with Lieutenant Philip Sheridan in command of the army troops. Today the army engineers are here constructing one of the country's greatest power-navigation dams across America's greatest West Coast river, at a cost of \$32,000,000. This great work may be seen from trains, which follow the river's shore.

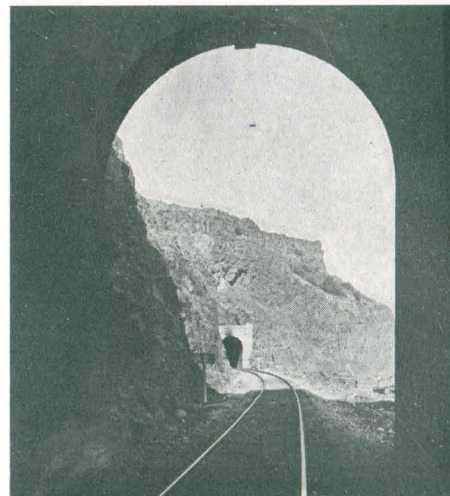
Over the mountain cliffs on the Oregon shore drop numerous crystal cataracts, and for miles may be seen the threading line of the Columbia River Highway. The railway pierces the western rampart of the Cascade Range with a tunnel almost one-half mile in length at Cape Horn.

Vancouver, Hudson's Bay headquarters from 1825 to 1846, and U.S. army post from that early day until the present, is a city of interest and enterprise, with extensive manufacturing, grain handling, rail and deep water shipping facilities. Here the railroad again crosses the Columbia River, then the Willamette, and follows the line of the lower harbor, past lumber mills and many other extensive industrial concerns on its double-tracked entrance to Portland.

Portland, The "Rose City"

Portland, population 352,000, is the heart of this wonderful Pacific Northwest out-of-doors land, with a delightful climate. It is unusual in the beauty of situation, lying on both sides of the Willamette River, watched over by mountain ranges in three directions, while to the fourth lies the beautiful and fertile valley of the Willamette—all encompassed by the richness of evergreen forests.

A fine system of boulevards, covering the city, surrounding districts of scenic advantage and the distant countryside, affords visitors delightful automobile trips. The well-famed Columbia River Highway, leading eastward along sheer cliffs, through the heart of the Cascade Range, reveals an amazing and changing panorama of snow-peaked mountains,



TUNNEL TO TUNNEL



MT. HOOD, FROM BINGEN-WHITE SALMON



MT. HOOD, COLUMBIA RIVER



TROUT FISHING



SPOKANE, PORTLAND AND SEATTLE RAILWAY

Mountains, Rivers and Ocean



PORTLAND, ROSE CITY

Hood and Adams, the expanding waters of the Columbia, crystal cataracts, and forests of fir, pine, larch and cedar. Rose culture has reached such perfection that Portland has been well named the Rose City.

Along the Lower Columbia River Portland to Astoria and the Sea

In all this land of history, romance and scenic interest, no short trip gives the visitor so rich and changing a view of sweeping river, forest, mountain and ocean as this.

This ride along the shores of the Willamette and Columbia Rivers between Portland, Astoria and the Pacific Ocean, gives the eye Nature's true tints of a beautiful picture rare in its composition, variety and extent.

In the run of about four hours are scenes novel to the tourist—lumber mills and logging operations, river and ocean craft, fishing villages, fleets of fishermen's boats and forested coast ranges. For miles, soon after leaving Portland, Mt. St. Helens dominates the skyline. Opposite Rainier are seen the great lumber mills of Longview.

The track follows the shore of the ever-widening Columbia River, with changing vistas, to Astoria; and motor stages traverse the parallel Columbia River Highway.

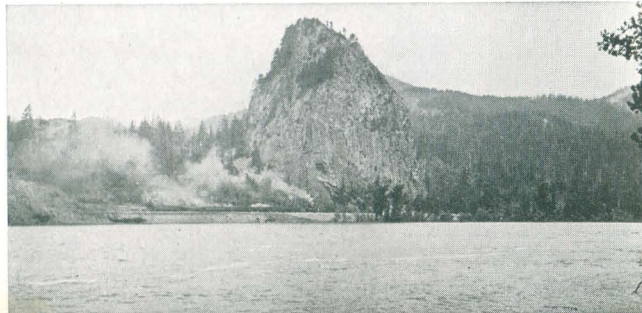
Astoria

The first American settlement on the Pacific Coast was at Astoria in 1811, although this spot previously had been visited by Captain Robert Gray in 1792 and the Lewis and Clark expedition in 1805-6. On a hilltop an imposing column 126 feet high commemorates the establishment of the city, as well as the discovery of the Columbia River by Captain Gray, the explorations of Captains Lewis and Clark, the enterprise of John Jacob Astor, and the coming of the pioneers.

Rising on the slopes above the Columbia River, the homes and public buildings overlook a vast panorama of mountain, forest, river and ocean.



PORTLAND-ASTORIA-SEASIDE STAGE



BEACON ROCK, EAST OF SKAMANIA



COLUMBIA RIVER, NEAR MT. PLEASANT

SPOKANE, PORTLAND AND SEATTLE RAILWAY

Pacific Northwest Playground



Astoria's modern maritime importance is evidenced by the miles of busy waterfront, the shipping, docks, lumber and flouring mills, salmon canneries and other enterprises.

Following the extensive waterfront of the city, the line crosses a long bridge over Young's Bay, and runs through meadows, fields of wild flowers, golden banks of Scotch broom and evergreen woods to the end of the famous Lewis and Clark Trail at Clatsop Beach on the Pacific Ocean.

Clatsop Beach, Pacific Ocean

Southward for twenty-five miles from the mouth of the Columbia River, reach the smooth, surf-washed sands of Clatsop Beach, ending at the dominating heights of densely forested Tillamook Head.

Upon this vast natural veranda of the Pacific Ocean, hotels, cottages, homes and camps abound. There are accommodations for all desires, from the first-class hotels and roomy cottages to modest boarding places, comfortably furnished tent houses and campsites.

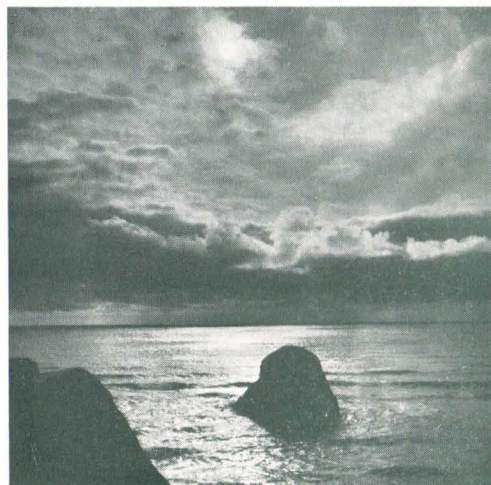
Clatsop Beach is devoid of the barrenness sometimes associated with the seacoast. Here are rolling, grassy meadows and groves of evergreen spruce, with a background of virgin forest reaching to the nearby mountain tops.

It is an all-year resort, for freezing weather is seldom known, and the ever-refreshing and recreating influence of the soft salt air and music of the sea waves in surroundings of unusual richness and beauty, entice lovers of nature and the weary to this spot at all seasons. Spring and autumn are delightful. But the glory of the year is summer, when conditions here reach perfection, with azure sky, argent cloud, ocean's deep blue, salt breeze, soft days and cool nights inviting open fires, blankets and slumber. Clatsop Beach is supplied with pure spring water from the mountains.

The surf bathing at Clatsop Beach is particularly invigorating and delightful.



PORTLAND, MT. HOOD



SUNSET, PACIFIC OCEAN



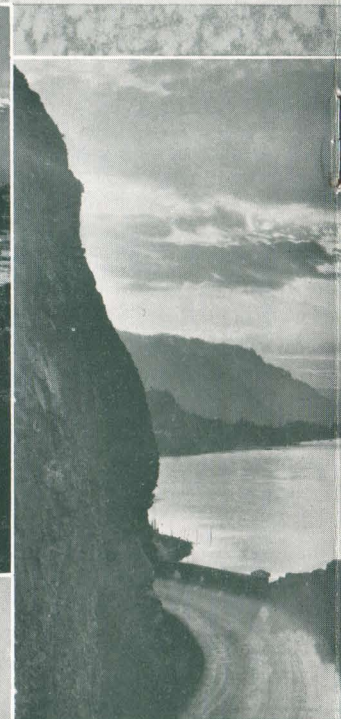
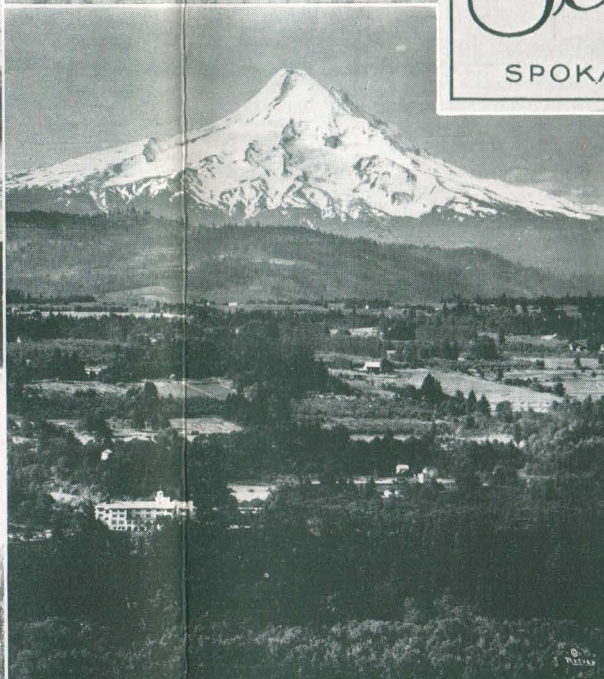
LOWER COLUMBIA RIVER



CLATSOP CREST, LOWER COLUMBIA RIVER

Scenic River Forest Pacific

SPOKANE, PORTLAND AND

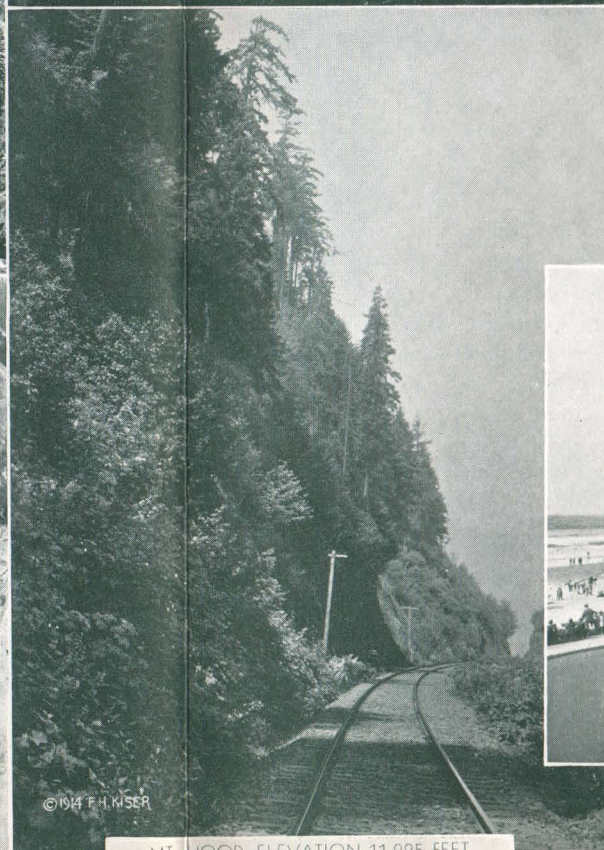


GORGE OF CO

CLATSOP BEACH,

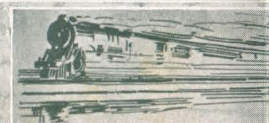


SNAKE RIVER CANYON
COLUMBIA RIVER, CASCADE MOUNTAINS
BONNEVILLE DAM CONSTRUCTION



© 1914 F.H. KISER

MT. HOOD, ELEVATION 11,225 FEET
ALONG LOWER COLUMBIA RIVER



• Mountain •
 • Ocean District •
 ic Northwest •
 AND SEATTLE RAILWAY

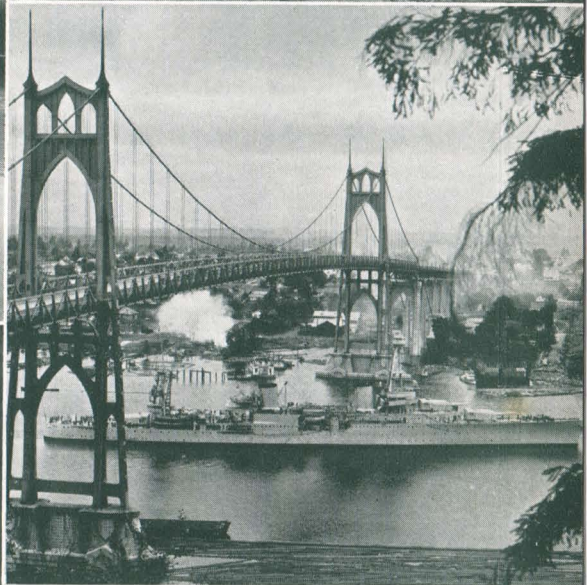


COLUMBIA RIVER

PACIFIC OCEAN



MT. ST. HELENS, ELEVATION 9,671 FEET
 ASTORIA COLUMN, 125 FEET HIGH



CAPE HORN COLUMBIA RIVER
 WILLAMETTE RIVER, PORTLAND
 CANNON BEACH, PACIFIC OCEAN

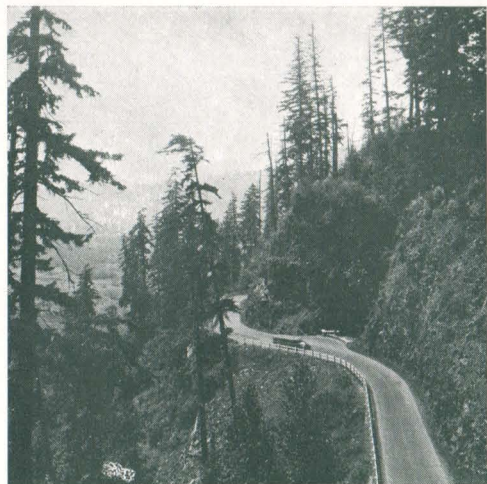


© Frank Woolfield
 OREGON



SPOKANE, PORTLAND AND SEATTLE RAILWAY

Expanding Lower Columbia River



LOWER COLUMBIA RIVER HIGHWAY

Aside from the pleasures of bathing in the surf, lolling in the sands or tramping for miles the wave-beaten shore, visitors find that Nature has been generous in furnishing many attractions for out-of-door life. Tillamook Head provides a good climb through forest of giant spruce, rewarded by grand views of ocean, mountain and timberland; mountain streams give fine fishing in season; tide-washed rivers invite canoeing or boating; trails to distant points through meadows and woods allure the pedestrian; and man has constructed splendid highways and bridle paths.

Hotels and restaurants make a specialty of crabs, clams and other seafoods, with dairy products, poultry and eggs from nearby ranches.

No other Pacific Ocean resort in the Northwest offers lovers of the sea so great a variety of attractions, amusements and accommodations as Clatsop Beach, centered at Seaside and Gearhart.

Gearhart

At Gearhart an eighteen-hole golf course is laid upon rolling sweeps between ocean front and evergreen forest. Its natural situation is a real joy to lovers of the game. A modest greens fee is charged visitors.

Hotel Gearhart and Ocean House occupy splendid locations, commanding views of the ocean, forest and golf links, with dining rooms and sun porches facing the ocean. Accommodations are provided for large numbers of first-class patrons. Numerous cottages are available for the season or shorter periods. Beside golf there are riding horses, tennis, etc.

Seaside

Seaside is a city of several thousand during the summer season, and hotels, restaurants, boarding places, and stores are open all the year. It is well equipped with modern improvements—paved streets, light, water and a long ocean front promenade.



HOTEL ASTORIA



TONGUE POINT, ASTORIA



ASTORIA, COLUMBIA RIVER

SPOKANE, PORTLAND AND SEATTLE RAILWAY

Clatsop Beach, Seaside and Gearheart, Pacific Ocean



Seaside's public golf course is splendidly located on both sides of the beautiful Necanicum River, and reaches toward the ocean front. A small greens fee is charged visitors.

Seaside has numerous hotels, restaurants, boarding houses, cottages and tents for rent, salt water natatorium, churches, stores, markets, theatres, dance pavilions, day nursery for children, riding horses, etc. It is the end of the historic Lewis and Clark Trail. Here, appropriately marked, is the site of the salt camp, of Lewis and Clark in 1805-6.

The Seaside Hotel occupies a commanding site on the promenade and ocean front, provides accommodation for a large number of guests, and meets the requirements of the best resort patronage, with lounge and dining room facing the ocean. It and numerous other hotels, cottages, boarding and rooming houses and camp facilities, provide a range in accommodation and price to meet varying wishes or needs.

Cannon Beach

Ten miles south of Seaside by a good motor road leading through splendid forest and over Tillamook Head is the twelve miles' stretch of wide, hard sands of Cannon Beach with a most beautiful combination of fantastic rocks, forests and ocean fronts. This wonderful beach derives its name from an ancient bronze cannon found in the surf-washed wreckage of some old wooden frigate. Regular motor stage service is provided from Seaside.

Hotels, cottages and camps front on the "singing sands" of this beautiful beach.

North Beach

On the Washington side of the Columbia River, extending northward, is North Beach, reached by ferry-motor stage service from Astoria. Its chief attraction is the beach itself, facing the Pacific for twenty-five miles, and at low tide affording a boulevard of compact sand the entire distance.

Summer hamlets sheltered in groves of spruce are strewn along the shore in goodly number, each provided with com-



OCEAN TERMINAL, ASTORIA



GOLF, GEARHART



GEARHART HOTEL



BATHING HOUR, CLATSOP BEACH



SPOKANE, PORTLAND AND SEATTLE RAILWAY

Clatsop Beach Resorts, Pacific Ocean



GEARHART, CLATSOP BEACH



OCEAN HOUSE, GEARHART



GOLF, SEASIDE

fortable hotel, cottage and camp accommodations. The principal points are Seaview, Long Beach and Ocean Park.

It is a great place for the pedestrian, who may take short or long walks to points of changing interest, and surf bathing is ideal.

Train Service

Spokane-Portland Line. Limited, wholly air-conditioned, trains at night in both directions carry observation club cars, standard and tourist sleeping cars, and latest pattern coaches. Day trains carry modern coaches and reserved-seat coaches, with observation windows, individual chairs, etc., affording splendid views of the Columbia River-Cascade Range scenery.

Portland-Astoria-Clatsop Beach Line. Trains leaving Portland in morning and Seaside in late afternoon carry observation cafe parlor cars and coaches; leaving Portland in the evening and Seaside in the morning carry observation cafe parlor cars week-ends and coaches daily. During summer a week-end limited leaves Portland 2.00 p.m. Saturday, arriving Clatsop Beach before dinner, and leaves Clatsop Beach early Sunday evening, with observation parlor cars and coaches.

Motor Stage Service

Portland-Astoria-Clatsop Beach Line. Motor coaches leave Portland morning, noon and afternoon, along the wonderful lower Columbia River Highway, for Astoria and Clatsop Beach points, with similar service eastbound.

Lower Columbia River Scenery

Both trains and stages afford passengers matchless views of the ever-expanding river, forest lands, and distant mountains.



SEASIDE HOTEL

SPOKANE, PORTLAND AND SEATTLE RAILWAY

Seaside and Gearhart, Clatsop Beach



Round Trip Fares, Summer 1935 From Portland

\$3.50 to Astoria, Gearhart and Seaside, week-ends.

\$4.00 to Astoria, \$4.65 Gearhart, \$4.75 Seaside daily, limit ten days; stopovers.

\$5.00 to Astoria, Gearhart and Seaside daily, limit October 31; stopovers.

\$17.50 ten-ride family ticket between Portland, Astoria and Clatsop Beach points daily, limit three months.

\$5.70 stage Loop trip to Astoria, Seaside, returning via Tillamook and Newburg, giving wonderful trip along the lower Columbia River, visits at Clatsop Beach, along the Pacific Ocean to Tillamook Beach points, over the Coast Range and through the Willamette Valley, limit ten days; stopovers.

\$7.40 Loop trip same as next above, extended from Tillamook to Newport along the Oregon Coast Highway, thence to Corvallis and through the Willamette Valley via Salem or McMinnville, limit ten days; stopovers. Magnificent Ocean Scenery on this trip.

Tickets at above fares are honored in either direction on trains or stages, between Portland and Seaside, at option of passengers.

During the summer round trip fares to Clatsop Beach points are in effect from Pacific Northwest points, example Spokane \$20.00, details of which may be obtained at ticket offices of various railways; and from Eastern points a side-trip from Portland to Clatsop Beach points may be purchased with ticket from home stations at modest fare, quoted by agents.

Fares at other seasons are on different basis.

City Ticket Offices

PORTLAND—S.W. Broadway and Morrison St., F. J. McShatko, Agent; Telephone BRoadway 5631.

SPOKANE—Davenport Hotel, N. D. Keller, City Passenger and Ticket Agent; Telephone MAin 5141. Sprague Ave. and Wall St., E. F. Baird, City Passenger and Ticket Agent; Telephone MAin 5321.

Terminals

PORTLAND—Trains, Union Station; Telephone BRoadway 3421. Stages, S.W. Yamhill St. and Park Ave.; Telephone ATwater 5171.

SPOKANE—Trains Nos. 1 and 2, Great Northern Station; Nos. 3 and 4, Northern Pacific Station.

Agents of Burlington Route, Great Northern, and Northern Pacific Rys. and other lines will furnish fares, train service, etc., or communications may be addressed to names given below:

H. W. SHIELDS,
General Agent,
Spokane, Wash.

J. C. WRIGHT,
General Agent,
Astoria, Ore.

R. H. CROZIER,
General Passenger Agent,
Portland, Ore.



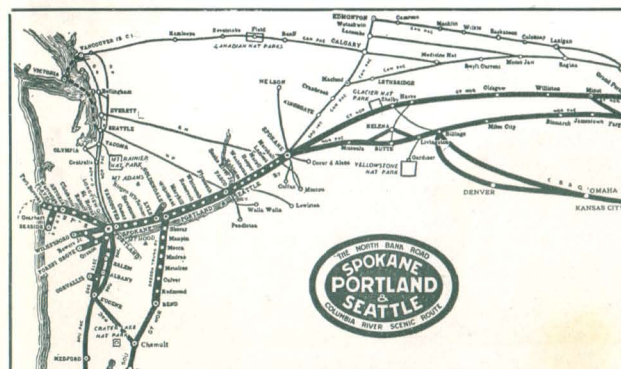
SEASIDE, CLATSOP BEACH



SURF BATHERS, CLATSOP BEACH



CANNON BEACH



COLUMBIA RIVER

CASCADE MOUNTAINS
PACIFIC OCEAN



LANE-MILES STANDISH CO.

CLATSOP BEACH

PACIFIC OCEAN / OREGON
COLUMBIA RIVER

