

It is difficult to describe Glacier Park in few words because so much beautiful scenery is crowded into a comparatively small area. Gorgeous colored mountains with festoons of snow. Ancient glaciers melting off into waterfalls that leap like rainbows down the mountain sides, toward green forested valleys and lovely lakes that mirror all this beauty.

# GLACIER NATIONAL PARK

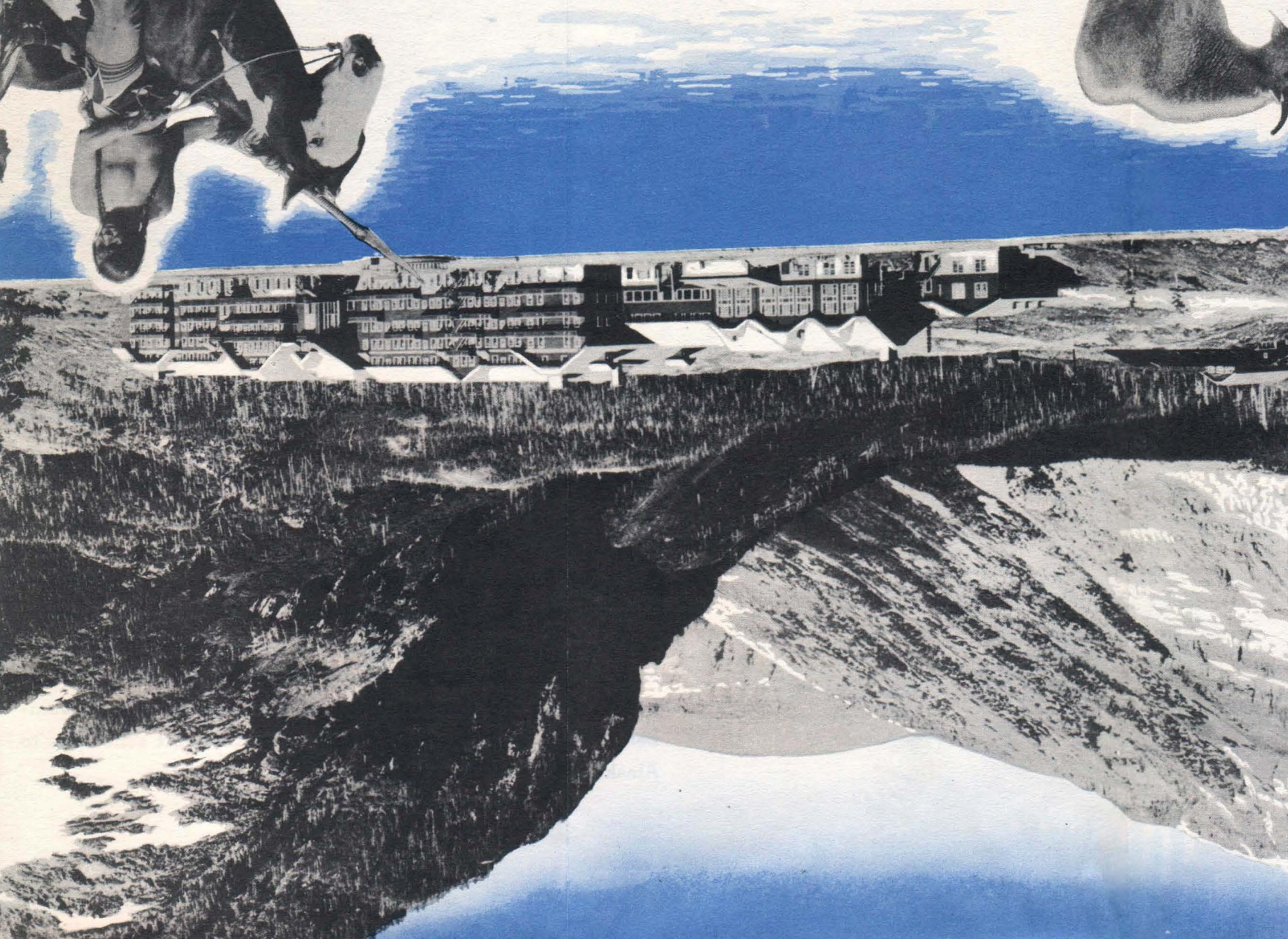
*the enchantment of nature at her best*



Grinnell Lake and the Garden Wall



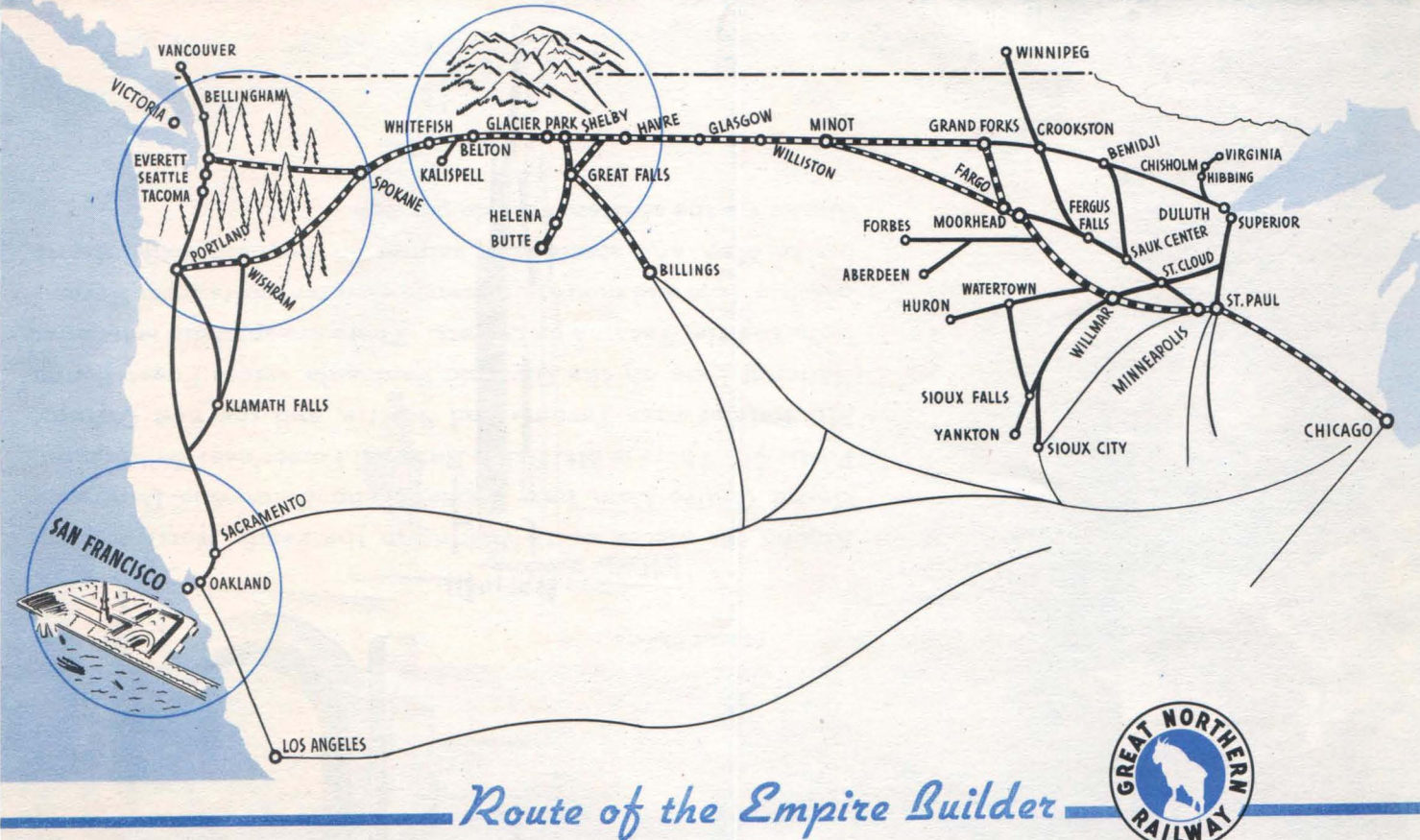
Going-to-the-Sun-Mountain



Many-Glacier Hotel

If you are one of those who, when planning a vacation, asks, "What can I do there?" the answer is simple and direct. You can do almost anything in Glacier National Park that you can do anywhere else, and with more enjoyment. Because your surroundings are so beautiful, so different, so stimulating, so refreshing. Even if you wanted to remember a worry, you would keep forgetting it here.

Of course you have to think about eating and sleeping. Fortunately, Glacier National Park is well equipped with picturesque mountain hotels and chalets, some large, some small, but all of them comfortable. The meals—some large, some small, but all of them comfortable. The meals—some large, some small, but all of them comfortable. The meals—some large, some small, but all of them comfortable.



Route of the Empire Builder



## GREAT NORTHERN TRAVEL HEADQUARTERS

For more detailed information about passenger service, rates, routes, reservations, etc.,

BILLINGS, MONT.	311 Electric Building
BOSTON, MASS.	203 Walker Building
BUFFALO, N. Y.	797 Elliott Square
BUTTE, MONT.	513 Metals Bank Building
CHICAGO, ILL.	212 South Clark Street
CINCINNATI, O.	1008 Traction Building
CLEVELAND, O.	508 Hippodrome Building
DALLAS, TEXAS	1004 Southwestern Life Building
DES MOINES, I.A.	305 Equitable Building
DETROIT, MICH.	Transportation Building
DULUTH, MINN.	302 West Superior Street
FARGO, N. D.	702 Black Building
GRAND FORKS, N. D.	Great Northern Station
HELENA, MONT.	802 First National Bank Building
KANSAS CITY, MO.	Placer Hotel Building
MILWAUKEE, WIS.	544 Railway Exchange Building
MINNEAPOLIS, MINN.	502 Majestic Building
MINOT, N. D.	640 Marquette Avenue
NEW YORK, N. Y.	Great Northern Station
OMAHA, NEBR.	695 Fifth Avenue at 48th Street
PHILADELPHIA, PA.	1412 First National Bank Building
PITTSBURGH, PA.	504 Finance Building
ST. LOUIS, MO.	602 Oliver Building
ST. PAUL, MINN.	820 Boatmen's Bank Building
SIOUX CITY, I.A.	4th and Minnesota Streets
SIOUX FALLS, S. D.	403 Commerce Building
SUPERIOR, WIS.	Great Northern Station
TORONTO, ONT.	Union Station
WASHINGTON, D. C.	507 Royal Bank Building
WINNIPEG, MAN.	303 National Press Building
	414 Main Street

## HOW TO SHIP YOUR CAR BY TRAIN

Enjoy a Clean, Safe, Comfortable Train Trip . . . Have Your Car Waiting for You at Destination.

Here's a service you will appreciate. Your automobile will be shipped a few days before your departure by expedited freight service and will be ready for you on your arrival at your destination.

One Ticket at 4 Cents per Mile is the cost of shipping your car, with the purchase of two tickets good in Standard Pullman Sleeping Cars. Coach and Tourist Sleeping Car passengers may also take advantage of this service with the purchase of three tickets good in coaches or tourist sleeping cars.

You avoid the expense, hazards and fatigue of fast driving over great distances . . . you save your car from possible damage, and from unavoidable wear and tear.

No crating required . . . no extra charge for loading or unloading. Passenger representatives and ticket agents will gladly give you complete details.

*A Vacation Suggestion for 1940*

## GLACIER NATIONAL PARK

## PACIFIC NORTHWEST

## GOLDEN GATE INTERNATIONAL EXPOSITION

in **ONE GLORIOUS TRIP on the EMPIRE BUILDER**



# THE EMPIRE BUILDER...

## Every Car Air-Conditioned

This great trans-continental train speeds westward—a modern hotel on wheels—where the pioneers slowly drove their covered wagons.

The Empire Builder route is rich in history—from the time of the daring French, English and American explorers who sought the secret Northwest Passage through the Rockies, until that bitter winter day in 1889 when John F. Stevens, a Great Northern engineer, pressed on alone into the blizzard and found Marias Pass—lowest crossing of the Continental Divide in the northern states.

Now it is a gay vacation trip going out West this way. You can have parties in the buffet, the dining room, the radio lounge. There are barber shop, valet service and shower baths. Latest magazines and newspapers, frequent news bulletins. There are three kinds of accommodations to suit your budget mood: Standard Pullman (including berths, compartments, drawing rooms, bedrooms); new style Tourist Sleeping Cars and Luxury Coaches.





# the evergreen PACIFIC NORTHWEST

It is "just around the corner" from Glacier National Park. Its key cities are Spokane with a waterfall where the city hall square would be in an ordinary city; Everett, Seattle and Tacoma on the shore of Puget Sound, with Rainier National Park in their backyards; Bellingham, the gateway to Mount Baker; Portland, landmarked by Mt. Hood. Vancouver in British Columbia, and quaint English Victoria on Vancouver Island.



Seattle



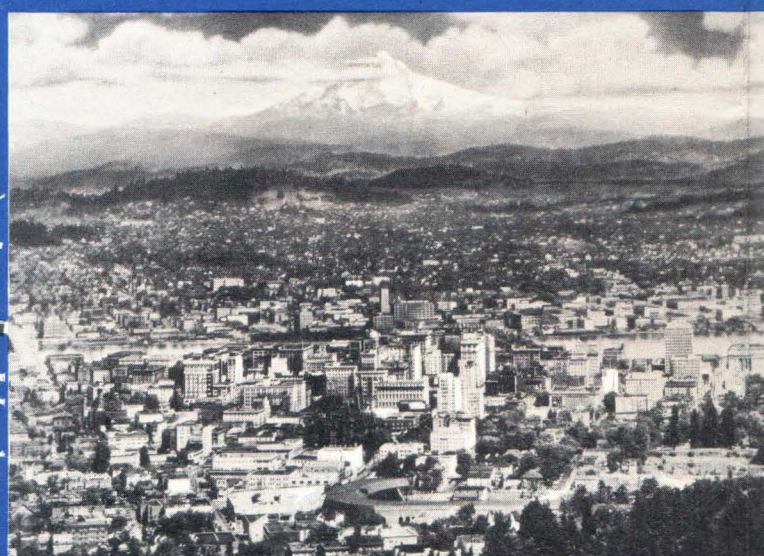
Tacoma



Mount Rainier



Mount Shasta



Portland



Spokane



Mount Shuksan

Among the places worth visiting in the Pacific Northwest are Grand Coulee Dam near Spokane and Bonneville Dam near Portland. There is Mt. Baker National Forest near Bellingham, Mt. Rainier near Tacoma and Seattle, and the new Olympic National Park on the Olympic Peninsula across Puget Sound from Seattle, Tacoma or Everett. There are splendid salt water beaches, lake and mountain resorts—winter sports from November to May, and steamships sailing on frequent schedules to Alaska via the sheltered inside passage.

## the romance of the western world... GOLDEN GATE INTERNATIONAL EXPOSITION....

San Francisco is America's City of Dreams brought to reality. First the marvelous Golden Gate Bridge. Then the San Francisco-Oakland Bridge across the wide bay. And then—a new Treasure Island, built up from the bottom of the bay, beside the bridge—and, covering the whole island, an exquisitely beautiful International Exposition featuring the lands that border the Pacific, the islands of the South Seas, the far places of the world... All brought together into a harmonious ensemble of great historic interest. Well worth a trip clear across the Continent—especially when train fares are so low and the Great Northern Railway's Empire Builder makes traveling so pleasant.

For more detailed information concerning the Golden Gate International Exposition, consult or write the nearest Great Northern Railway Travel Office, addresses shown on back of this folder, or fill out and mail the post card enclosed for your convenience.

