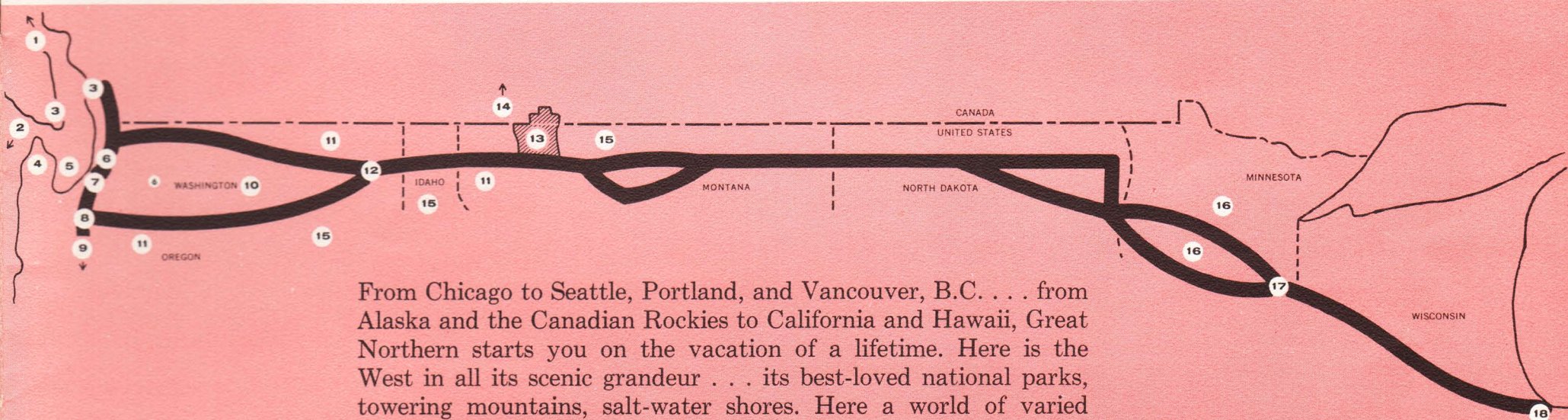


You'll have the time
of your life in



Vacationland, U.S.A.

and CANADA



From Chicago to Seattle, Portland, and Vancouver, B.C. . . . from Alaska and the Canadian Rockies to California and Hawaii, Great Northern starts you on the vacation of a lifetime. Here is the West in all its scenic grandeur . . . its best-loved national parks, towering mountains, salt-water shores. Here a world of varied excitement awaits your arrival!

Go Great! Go Great Northern



1 ALASKA New 49th State . . . largest, most spectacular. Wonderful fishing and hunting in this land of the midnight sun. Majestic scenery, ideal summer climate, adventure!



2 HAWAII Enchanting tropical paradise in the near Pacific. Land of surf, sun, luaus, hulas, easy-going fun. Swim at Waikiki, see Diamond Head, Pearl Harbor.



3 VANCOUVER-VICTORIA British Columbia's beautiful, modern world port on the mainland, and its picturesque old-world capital on Vancouver Island. Go by train . . . return by ship.



4 OLYMPIC NATIONAL PARK America's newest! Over 841,000 acres of glacial wilderness surrounding stately Mt. Olympus. Primeval forests, scenic thrills.



5 PUGET SOUND Picturesque salt-water arm of the Pacific Ocean stretching 125 miles from Juan de Fuca Strait to Olympia, Washington's capital. America's most scenic water sports area. Fisherman's paradise.



6 SEATTLE Queen city of the evergreen Pacific Northwest . . . front door to the Far East. Exciting international city, lumber and fishing hub. Site of annual Sea-Fair. Mecca for salt- and fresh-water sportsmen.



7 TACOMA Bustling shipping and lumber center on Puget Sound, 40 miles from Seattle. Gateway to Mt. Rainier National Park, Paradise Inn and the lofty snow-mantled peak that Indians worshipped.



8 PORTLAND Friendly City of Roses. Busy seaport 100 miles from the Pacific via the Columbia River. Scenic treats: Columbia River Gorge, Multnomah Falls, Mt. Hood.



9 CALIFORNIA Fabulous land of contrasts. Snowy Sierra peaks, burning deserts, magic cities: San Francisco, the Golden Gate . . . Los Angeles, Disneyland . . . Palm Springs!



10 COLUMBIA BASIN PROJECT A million-acre Garden of Eden wrested from arid desolation by the huge Columbia River irrigation system, man's greatest reclamation achievement. Many fine vacation areas.



11 MIGHTY DAMS Grand Coulee, largest man-made structure on earth. Bonneville, Rocky Reach, Hungry Horse, Fort Peck . . . all huge suppliers of hydroelectric power.



12 SPOKANE Hub city of the resource-rich Inland Empire. Heart of the Pacific Northwest resort area. Great fishing at nearby Lake Pend Oreille in Idaho.



13 GLACIER NATIONAL PARK Wonderful wilderness high in the Montana Rockies. Only national park on a main rail line. Fine hotels and meals. Hiking, riding, fishing, fun . . . amid magnificent mountain scenery.



14 CANADIAN ROCKIES Lovely Banff and Lake Louise, in a glorious mountain setting. Columbia Icefield, Jasper National Park. Easy to reach by bus from Glacier Park.



15 DUDE RANCHES Dozens of 'em . . . plain and fancy. Located on rivers, lakes and in forests of Montana, Idaho, Washington. Ride, fish, relax in the wonderful West.



16 MINNESOTA Land of 10,000 lakes. Sportsman's heaven. Famed for fine fishing, hunting, golf, water and winter sports. Hundreds of resorts, inexpensive to deluxe.



17 MINNEAPOLIS-ST. PAUL Beautiful Twin Cities on the Mississippi River. Landscapes laced with lovely lakes. Noted milling and industrial center; financial and cultural hub of the Upper Midwest.



18 CHICAGO America's foremost transportation and packing center. Bustling Lake Michigan port. Spectacular skyline, fine museums, zoos and parks. Excellent restaurants, hotels. Endlessly exciting.



ST. MARY LAKE near fabulous Going-to-the-Sun Road is best seen from a trim cruiser. A ranger-naturalist on board will point out the lofty cliffs and plunging falls along the shore. You *may* see a mountain goat!



AWE-INSPIRING SCENERY like this can't be appreciated a "peek" at a time, while driving. Relax and enjoy Glacier Park from sightseeing buses. That's Mt. Clement straight ahead, near the Continental Divide.



GLACIER PARK LODGE, one of four fine hotels in Glacier-Waterton Parks. You'll enjoy this view from the station at the eastern entrance. Indian tepees, archery, shuffleboard, pitch-and-putt golf on the lawn . . . a full-sized 9-hole course a few steps away.



CUTE TRICKS at Trick Falls prefer "shooting" each other rather than the mountain torrent beyond. Discover the falls' trick on your way to Two Medicine Lake. Go by sightseeing bus from Glacier Park Lodge.

HITCHRACK at Many Glacier Hotel in the Park's heart is the starting point for wonderful mountain adventures. From here, trails lead to beautiful hidden lakes, to lofty mountain passes, to flower-bedecked hanging valleys carved by age-old glaciers.

Start in the heart GLACIER NA



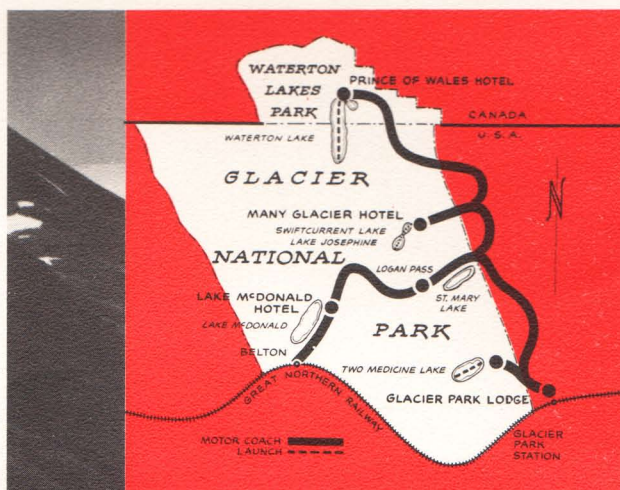
Vacation travelers who know their way around appreciate that Glacier National Park in the rugged Rocky Mountains of Montana is indeed in the heart of the West's favorite playgrounds.

Glacier Park is right in the center of Dude Ranch country . . . next door to the Blackfoot Indian reservation. From Glacier, it's only a step across the border into the Canadian Rockies of Waterton Lakes National Park—a thrilling daytime trip to the wonders of Banff, Lake Louise, the Columbia Icefield and Jasper Park.

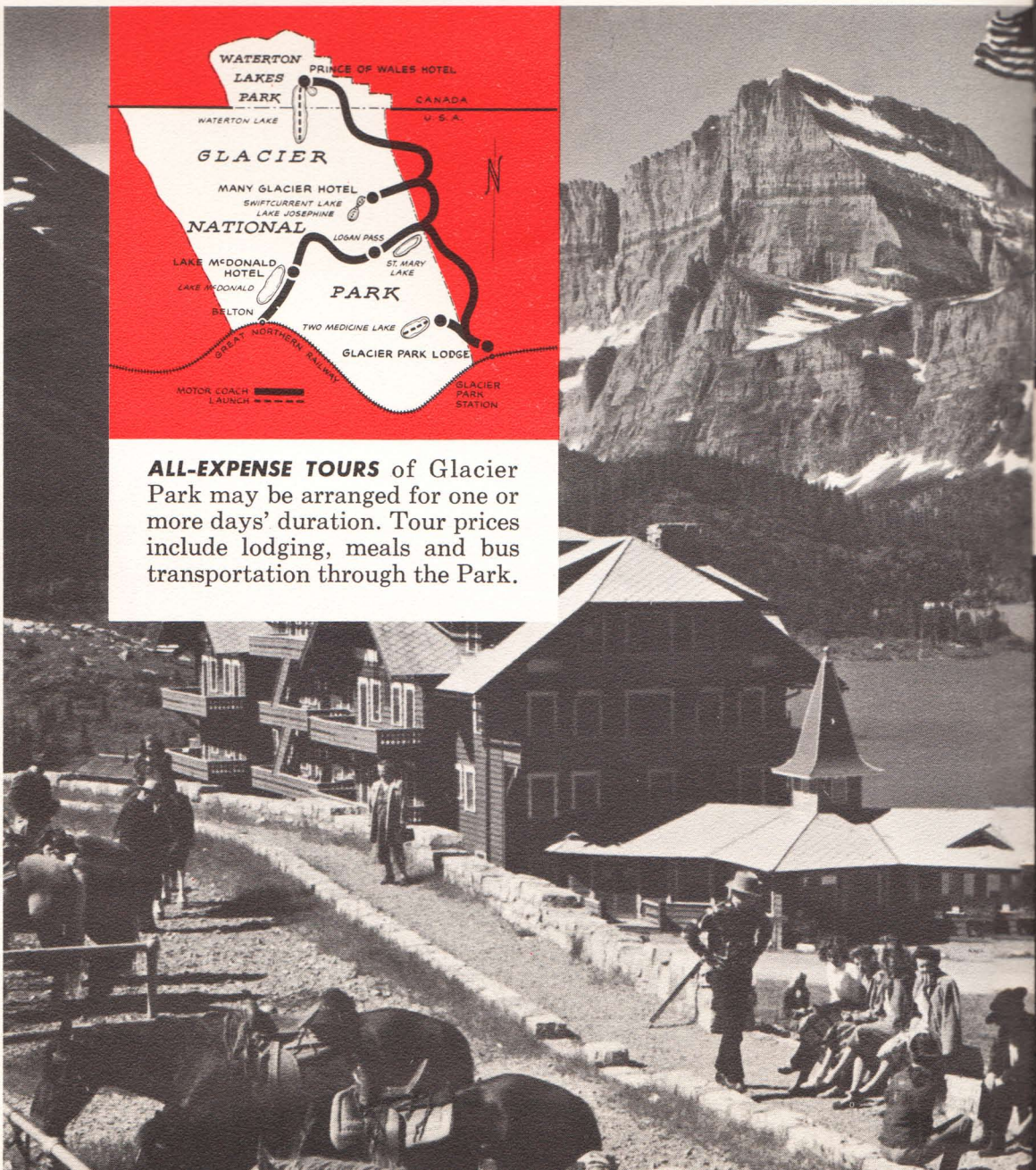
Yellowstone and the Grand Tetons are only a day away. And the entrancing western cities of Seattle, Portland, and Vancouver, B.C., plus the magnificent vacation country they command, are overnight by train from Glacier Park.

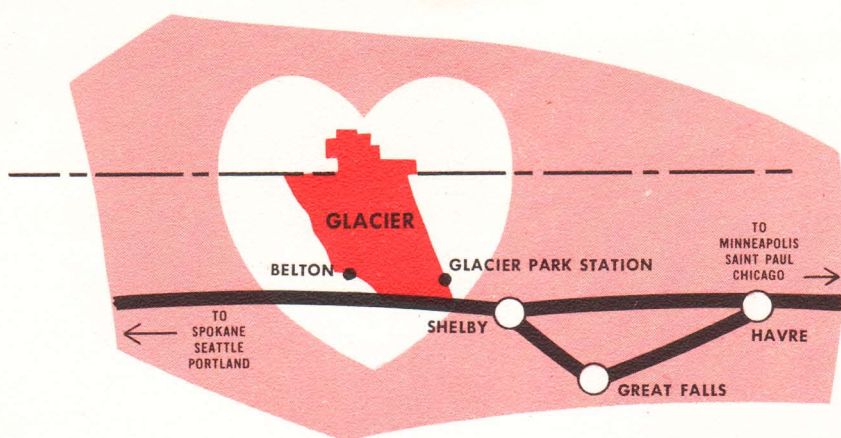
The beauty of a vacation in and near Glacier Park lies in its infinite variety. Frankly, many folks loaf their time away, drinking in the mountain panoramas, enjoying the crisp, pure air (pollen-free!) and soaking up new vitality and energy. That's their choice.

But for the active "get-up-and-go" vacationer, Glacier Park offers morning-to-midnight challenge. A trail-side breakfast . . . a bracing hike or ride over mountain passes to active glaciers, Alpine lakes, or along the banks of a rushing stream. A fishing excursion to trout pools, near or remote . . . a nature walk to observe Glacier's bounteous and colorful wild-



ALL-EXPENSE TOURS of Glacier Park may be arranged for one or more days' duration. Tour prices include lodging, meals and bus transportation through the Park.





of Vacationland! TIONAL PARK



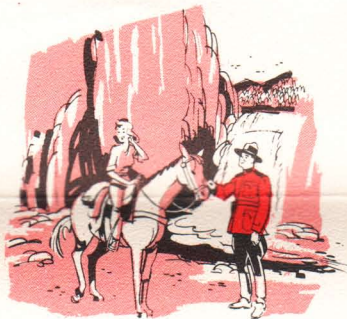
flowers, ancient rock structures and plentiful wildlife.

There's power-boat cruising on lofty tarns, 'neath vaulting craggy peaks . . . or pack-horse adventures into the unspoiled wilderness. There's golf on well-kept courses . . . or a bracing swim in sapphire-blue waters. How can you be bored? You'll cherish every moment of each precious day. You'll want your Glacier holiday to last forever.

You'll be amazed at the fine accommodations 'way out there in the shining mountains. Spacious hotels and lodges, gourmet meals to sate your mountain-sized appetite. Entertainment by talented college men and women "earning their way through." All the comforts of home—true luxury—beyond the hubbub of city traffic . . . the pall of factory smoke. Live it up! You're on the vacation of a lifetime.

Above all, plan to go and return from Glacier without a care. It's 1527 miles from Chicago . . . 627 miles from Seattle—too far for pleasant driving. Go Great Northern and relax the moment you step on board the streamlined Western Star. Then tour Glacier Park leisurely in open-top buses that let you see far more than you ever could from behind a wheel.

P.S. The Western Star stops daily at eastern and western entrances to Glacier Park during the mid-June to mid-September season.



CATCHING A CUTHROAT trout in Glacier Park is worth a thousand other vacation thrills. This lucky angler is fishing the rapids at Swiftcurrent Falls, just a step from Many Glacier Hotel. (P.S. You don't need a license!)



WESTERN SONGS echo across one of the jewel-colored lakes in Glacier Park. The far-away patches of snow form a mantle over deep glaciers. The mountain ridge on the skyline richly deserves its name, Garden Wall.



YAWNING CREVASSE is inspected by hikers from Many Glacier Hotel. Ranger-naturalists lead daily walks to Grinnell Glacier, a huge sheet of ice like those that chiseled out the Park's rugged peaks a million years ago.



PRINCE OF WALES HOTEL in nearby Waterton Lakes Park is a quaint Hansel and Gretel structure where hospitality reigns. It sits high on a promontory commanding one of the world's most spectacular views: down Waterton Lake into the U.S.



See the evergreen Pacific Northwest



MT. RAINIER, monarch of the Cascade Range, towers 14,410 feet above coastal lowlands. On its slopes lies the most extensive system of active glaciers in the continental United States. A national park, Mt. Rainier offers a fascinating choice of activities: hiking, climbing, riding, skiing, fishing. Daily bus service from Seattle or Tacoma.

WESTERN CANADA *has enchantment all its own*

British Columbia, good neighbor to the north, belongs on your itinerary . . . and it's easy to visit via Great Northern's streamlined Internationals, three a day each way between Seattle and Vancouver. Good connections by ship to Victoria and from there to Seattle.



LIONS GATE BRIDGE, famous Vancouver landmark. Busy seaport . . . Western Canada's largest city, Vancouver is immensely interesting . . . a wonderful place to shop.

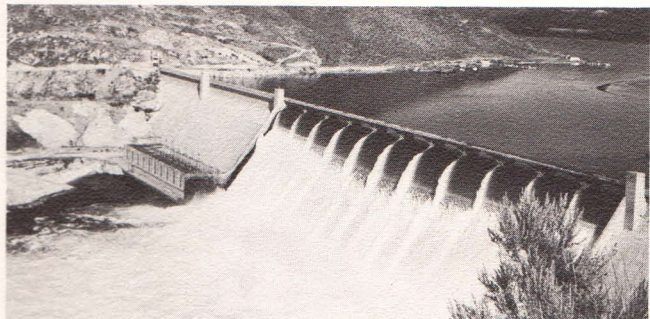


THUNDERBIRD PARK, near famed Empress Hotel in Victoria, displays the handiwork of Vancouver Indians. The totem poles make excellent camera subjects.

VICTORIA on Vancouver Island is British Columbia's quaint capital. A bit of old England transplanted.



QUEEN CITY of the Northwest, Seattle is situated between salt-water Puget Sound and fresh-water Lake Washington. Cosmopolitan world port, famed for fine hotels, restaurants and water sports.



GRAND COULEE DAM on the upper Columbia River. Man's mightiest engineering achievement . . . world's largest producer of electric power.



COLUMBIA RIVER GORGE, an easy drive from Portland, City of Roses. See Bonneville Dam and its fish ladders; 11 shimmering waterfalls.



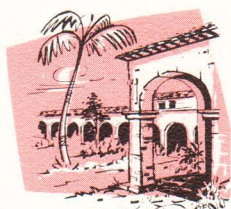
TIMBERLINE LODGE on Mt. Hood's snowy slopes. An exhilarating ski and sports haven only an hour by bus from Portland. Open all year.

Snow-capped Cascades... mighty dams...lively seaport cities...FUN!

Your holiday in this verdant vacationland offers a blend of big-city diversions and sight-seeing adventures; an enticing mixture of relaxation and active fun. See the mighty Columbia River and the mammoth dams that tame its turbulence. See towering mountains that seem to touch the sky . . . international cities ablaze with excitement, friendliness and charm.



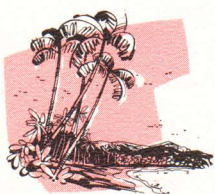
Via the Pacific Northwest to CALIFORNIA



Looking for new sights, new experiences? Why not go the scenic Pacific Northwest way to California . . . and taste the delights of Seattle, Portland and their surrounding vacation wonderlands.

What's left to say about the Golden State? Gay, exciting San Francisco and the majestic Golden Gate Bridge. Fabulous Los Angeles, Hollywood, Disneyland, sunny Pacific beaches . . . to mention a few of the 1001 enticements.

Ask your travel counselor to arrange your trip to California across the top of the nation . . . via Great Northern.



Glamorous 50th State HAWAII



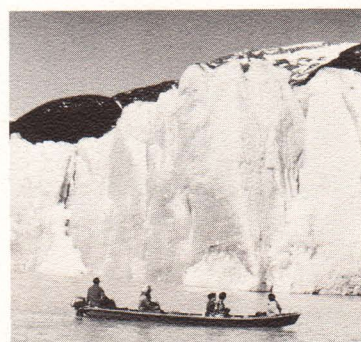
Seattle or Portland can be your stepping stone to the exotic Hawaiian Islands . . . to Waikiki Beach, whispering palms, tropical enchantment . . . to the kind of lazy holiday that dreams are made of. Whether you go by sea or air, your rail trip through the Pacific Northwest will be a rewarding

addition to your Hawaiian adventure. Go and return on Great Northern's Empire Builder or Western Star.

Wonderful 49th State ALASKA



Big, beautiful, burgeoning land of the midnight sun—that's Alaska. Tallest mountains in North America. A coastline bristling with lavish scenery. Progressive cities: Juneau, Anchorage, Sitka, Fairbanks! Mining, forestry, fishing, farming—a pageant of frontier life. Go Great Northern to Seattle or Vancouver, B.C.; then by plane or steamer direct to Alaska for a vacation you'll talk about for years!

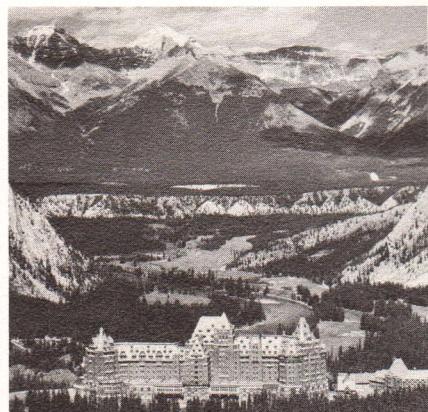


Banff, Lake Louise, the Columbia Icefield, Jasper CANADIAN ROCKIES



From Glacier National Park in the rugged Montana Rockies, it's only a few hours by modern bus to the splendors of the Canadian Rockies. First through Waterton Lakes Park, just across the border . . . then over broad prairies to Calgary and up to Banff with its world-famed luxury hotel. Equally charming is nearby Chateau Lake Louise.

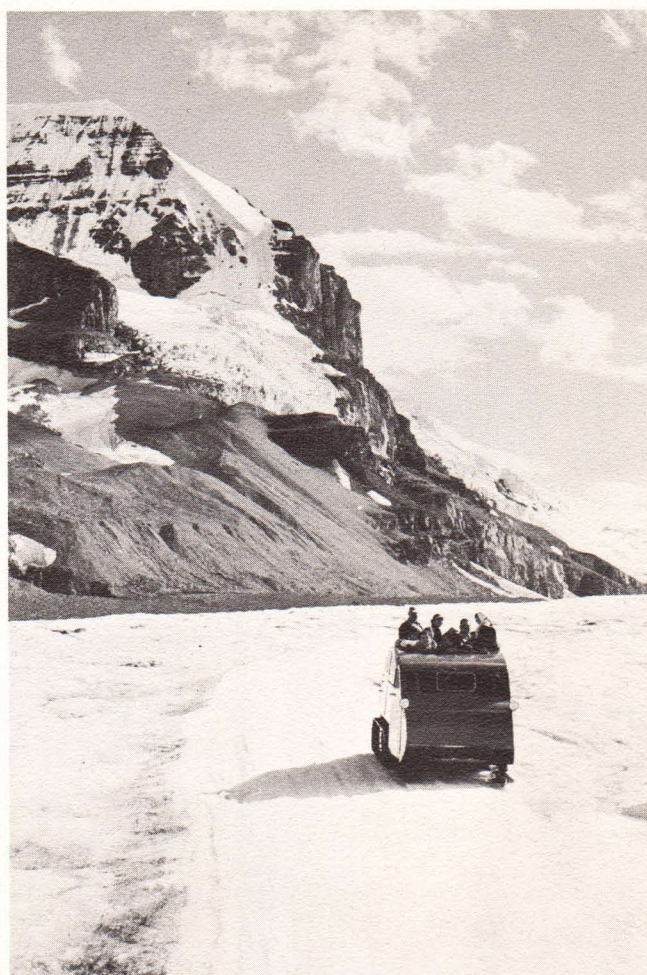
Visit Emerald Lake, a gem for your lifelong memories. See the Columbia Icefield and its age-old glaciers, the soaring snowclad peaks and sparkling pine-fringed lakes of Jasper National Park.



BANFF SPRINGS HOTEL overlooks a breathtaking panorama of mighty mountains. A fine golf course adjoins the hotel.



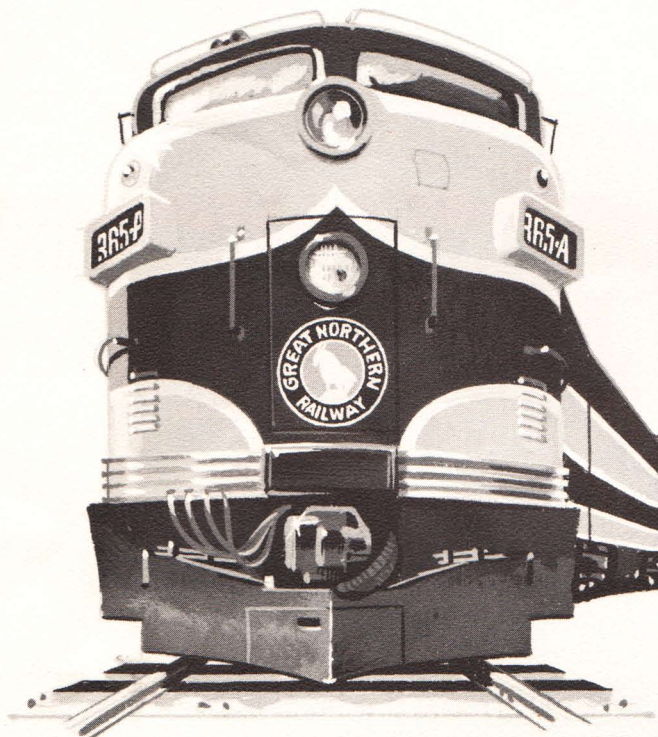
COLUMBIA ICEFIELD is laced with trails like this. What fun in mid-summer, while the folks back home are sweltering!



HIGH UP on Athabasca Glacier in Jasper National Park, you can see the sights from a brightly painted snowmobile. It's the only practical way to travel on this vast sheet of living ice.

To take you carefree...

GREAT NORTHERN'S



the streamlined
EMPIRE BUILDER

Incomparable Great Dome streamliner, with superb diner, unique Ranch Car, full-length Dome Lounge, deluxe Day-Nite coaches and a variety of Pullman accommodations. Daily between Chicago and Seattle-Portland via St. Paul, Minneapolis, Spokane.



DOME-LOUNGE CAR is a double-decked travel treat. Dome seats for viewing Western scenery. Spacious lounge below for games, beverages, conversation.

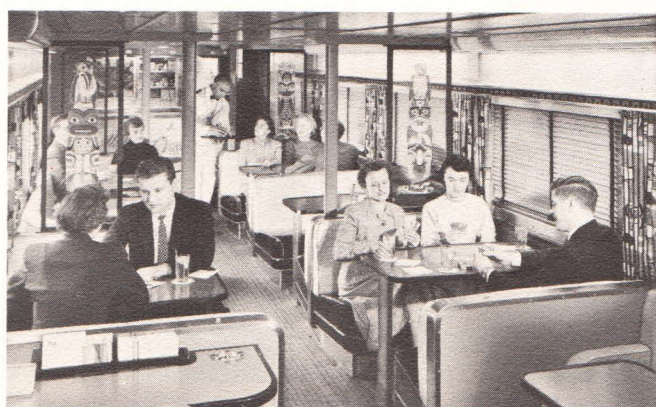


RANCH CAR brings the West to you all along the route. There's a lunch bar, tables for meals, and a fine lounge section. All in cowboy decor.

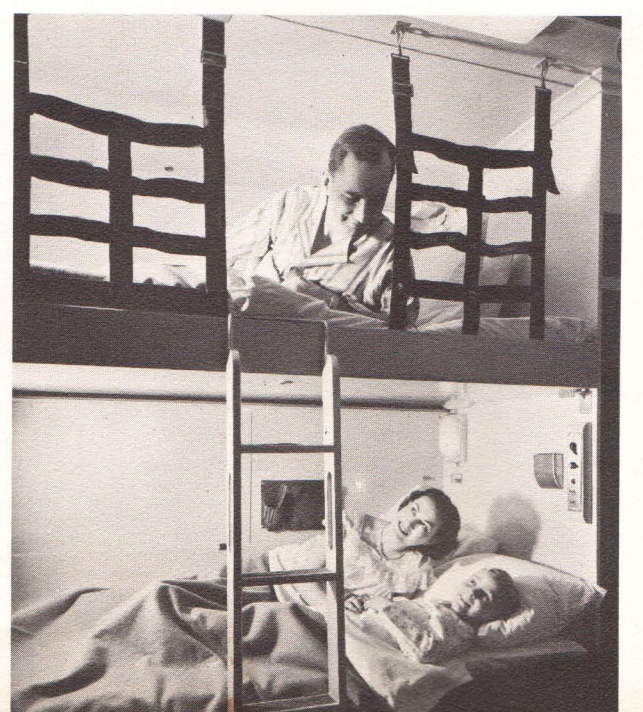


COACH TRAVEL DELUXE, with dome seats above for wonderful viewing. Reclining seats with leg-rests are truly relaxing!

LOUNGE of the full length dome car takes its colorful decorative motif from the Vancouver Indians. Miles go by in a hurry here.



FAMILY STYLE TRAVEL in an Empire Builder bedroom. While you sleep another 400 miles go by—bringing you closer to holiday fun.

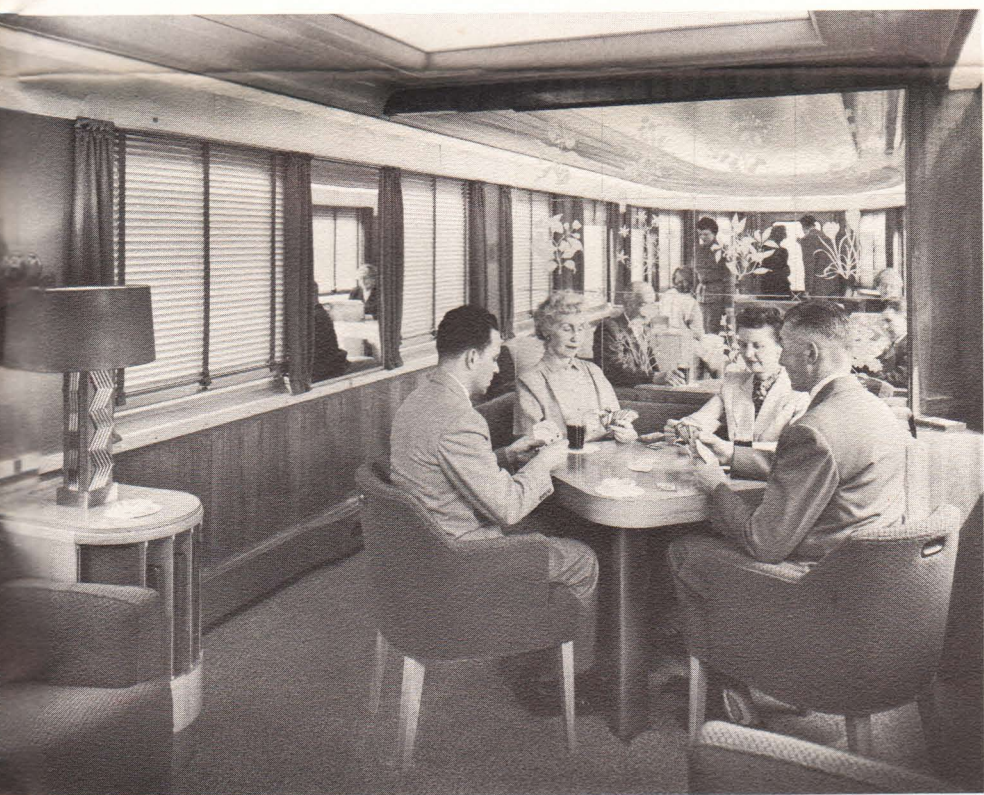
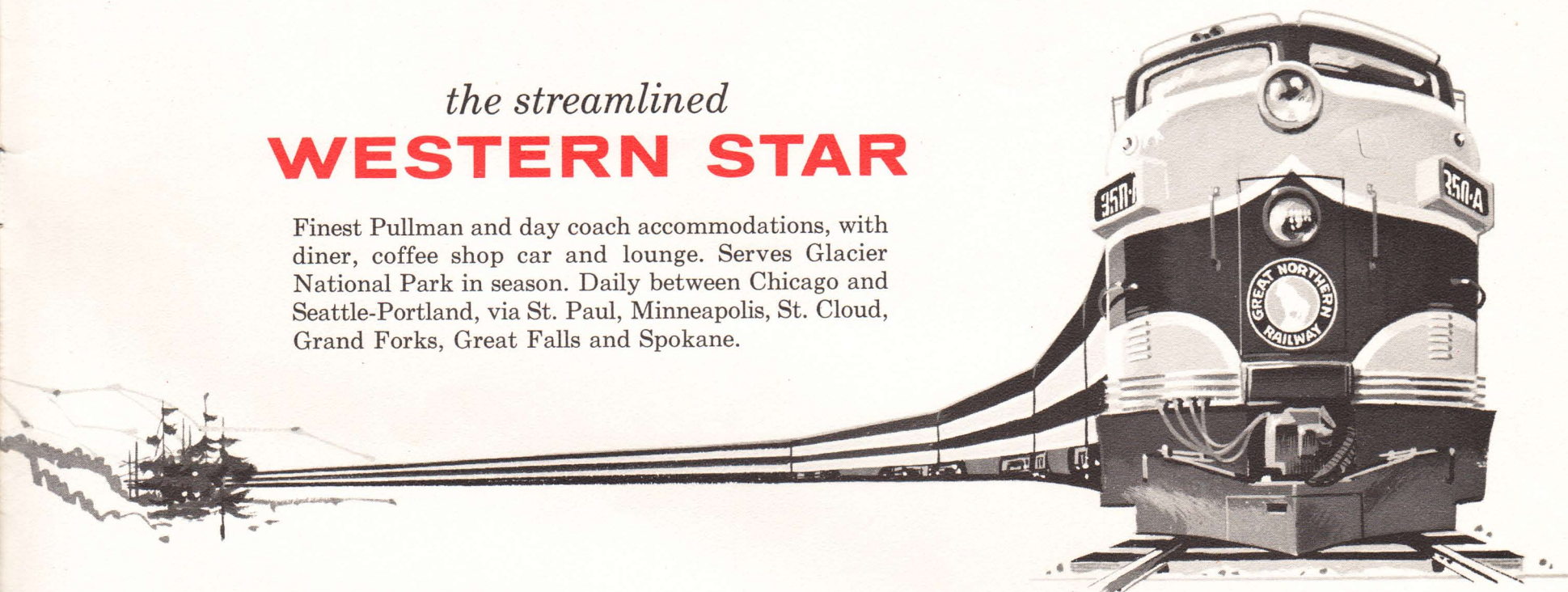


car-free to Vacationland, U. S. A.

TWO GREAT TRAINS

the streamlined
WESTERN STAR

Finest Pullman and day coach accommodations, with diner, coffee shop car and lounge. Serves Glacier National Park in season. Daily between Chicago and Seattle-Portland, via St. Paul, Minneapolis, St. Cloud, Grand Forks, Great Falls and Spokane.



WESTERN STAR LOUNGE makes you feel as if you were in your own living room. Write "wish-you-were-here" postals back home, chat with fellow vacationers, enjoy a friendly game of cards or a refreshing beverage. You're going *great!*



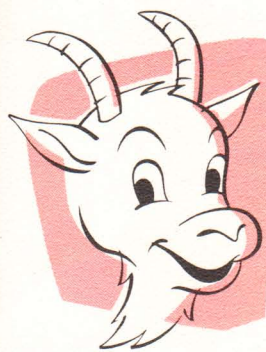
SCENERY ROLLS BY while you ride in perfect comfort. Western Star offers wide variety of Pullman accommodations.



"THE FINEST MEALS ON WHEELS" That's what travelers say about the food served aboard Great Northern dining cars.

GREAT NORTHERN TRAVEL OFFICES

*in principal cities of U.S. and Canada
(consult your local telephone directory)*



Atlanta, Ga.
Boston, Mass.
Buffalo, N.Y.
Chicago, Ill.
Cincinnati, Ohio
Cleveland, Ohio

Dallas, Texas
Denver, Colo.
Des Moines, Iowa
Detroit, Mich.
Duluth, Minn.
Edmonton, Alberta
Everett, Wash.
Fargo, N.D.
Grand Forks, N.D.
Great Falls, Mont.
Kansas City, Mo.
Los Angeles, Calif.
Milwaukee, Wis.
Minneapolis, Minn.
Minot, N.D.
Nelson, B.C.
New Westminster, B.C.
New York, N.Y.
Oakland, Calif.
Philadelphia, Pa.

Pittsburgh, Pa.
Portland, Ore.
Sacramento, Calif.
St. Louis, Mo.
St. Paul, Minn.
San Francisco, Calif.
Seattle, Wash.
Sioux City, Iowa
Sioux Falls, S.D.
Spokane, Wash.
Superior, Wis.
Tacoma, Wash.
Toronto, Ont.
Vancouver, B.C.
Vancouver, Wash.
Victoria, B.C.
Washington, D.C.
Wenatchee, Wash.
Winnipeg, Man.
Winston-Salem, N.C.

CLIP AND MAIL COUPON *TODAY!*

**Passenger Traffic Manager,
GREAT NORTHERN RAILWAY, ST. PAUL 1, MINN.**

Please send me further details on vacation travel
to _____,
_____, _____.

NAME _____
(please print)

ADDRESS _____

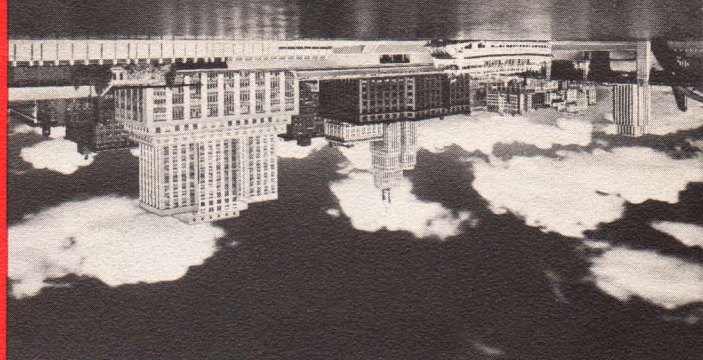
CITY _____ ZONE _____ STATE _____

There will be _____ in our party.
(number)

We plan departure about _____.
(date)



MINNEAPOLIS, beautiful city of lakes. Home of famous flour mills, University of Minnesota. Trading center for a vast Midwest area.

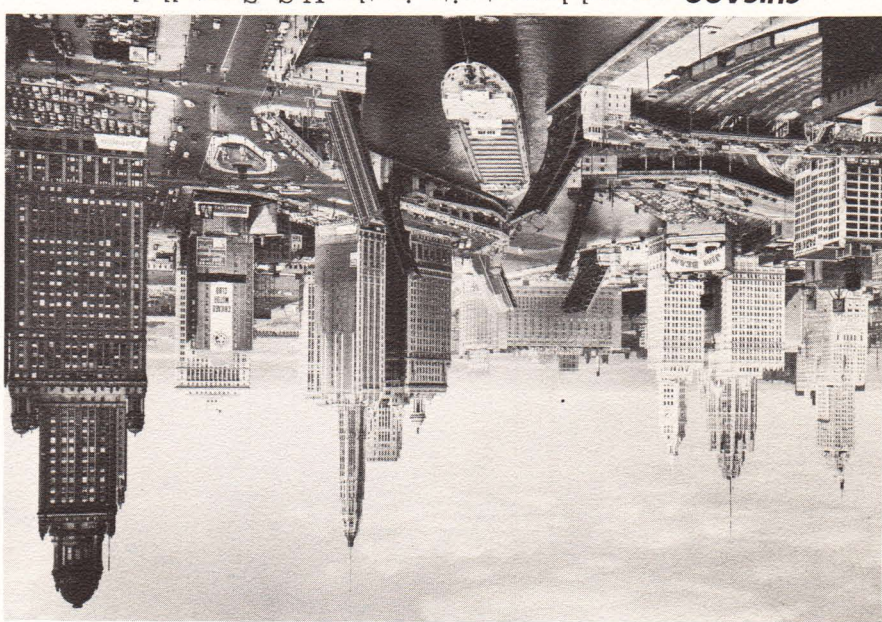


ST. PAUL'S handsome downtown overlooks the Mississippi. Capital of Minnesota. City of fine parks, civic buildings, playgrounds.

LAND OF 10,000 LAKES in Minnesota and Wisconsin. Delightful summer holiday country at back door of the Twin Cities. St. Paul is famed for its Winter Carnival; Minneapolis, for its gala mid-summer Aquatennial.

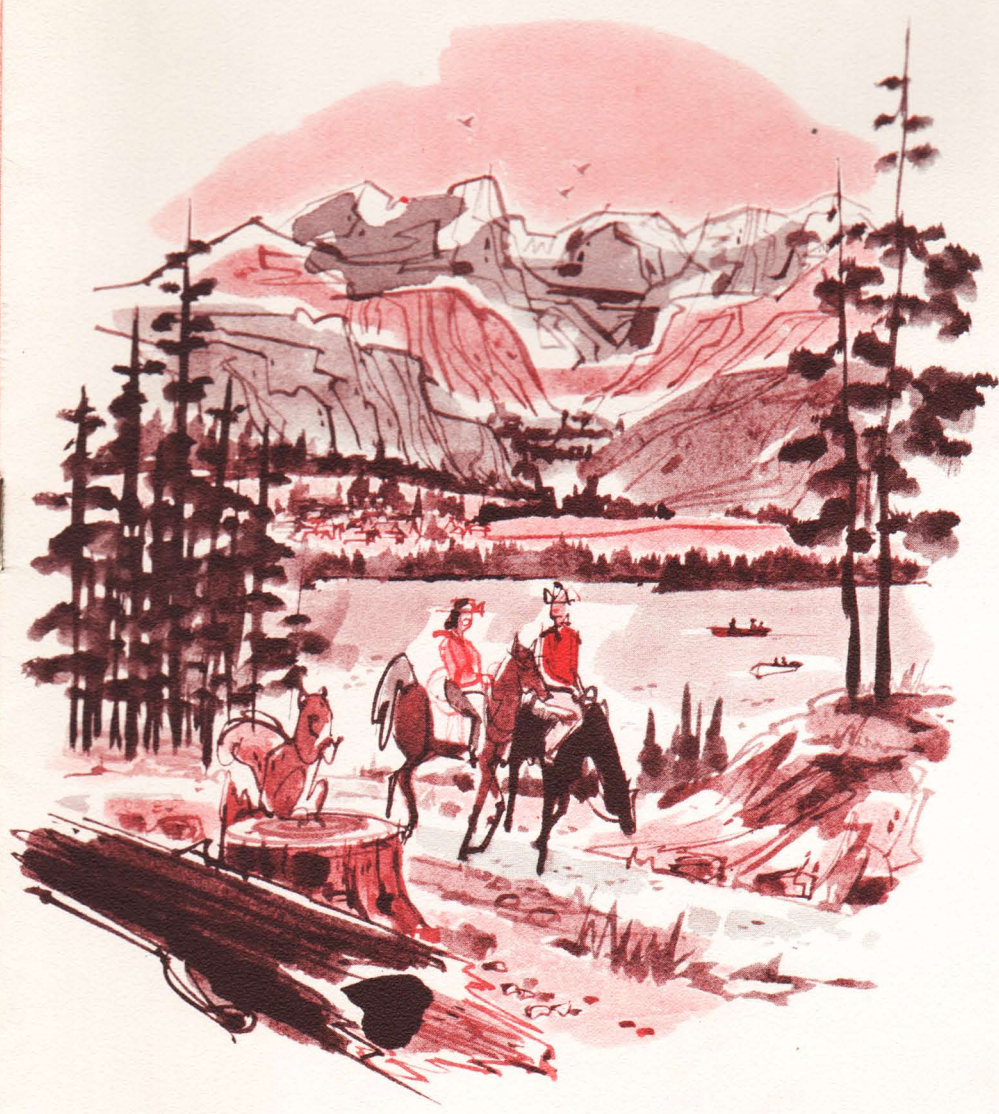


CHICAGO, second largest city in the U.S. See tall skyscrapers from the famous Outer Drive along Lake Michigan; world's largest stockyards, the river that flows backward. Connections by rail to points east and south.



Great Vacationlands
in Mid-America, too!

SEE AMERICA'S BEST



It's GREAT going **GREAT NORTHERN!**