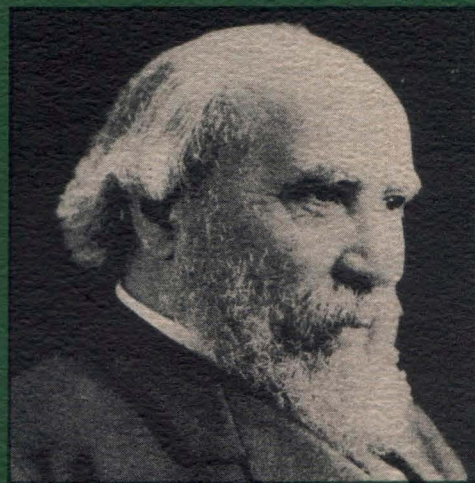


THE CAREER of James J. Hill embraced more than the building of a vast railway system. Along the route of the Great Northern he sponsored thriving settlements, introduced diversified farming and new industry. He pioneered in conservation . . . so that the land should be developed but never despoiled. Thus, he became famous not only as a great railway builder, but as the "Empire Builder". Continuing the tradition of ever-progressive partnership with the Northwest, Great Northern's finest train carries that same proud title.



James Jerome Hill

# empire builder

# elo





# Menu



(Please write on meal check each menu item desired, as waiters  
are not permitted to accept or serve orders given verbally)

## Dinner

		With Dinner Selection
Head Lettuce Salad, Roquefort Dressing..	25	
(Price opposite each Entree includes Soup or Juice, Potatoes, Vegetable, Bread and Butter, Dessert and Beverage)		
Chilled Vegetable Juice	Cream of Asparagus	
Fresh Seasonable Fish	2.25	
Fried Spring Chicken—Country Style	2.75	
Grilled Lamb Chops—Mint Jelly	2.75	
Baked Sugar Cured Ham—G.N. Sauce	3.00	
Chef's Suggestion	2.00	
New Potatoes CHEESED	Garden Fresh Peas PAYSANNE	
Hot Tea Biscuits	Assorted Cold Bread	
Toasted Crackers with Cheese		
Fresh Baked Pie WITH CHEESE	Strawberry Shortcake	
Coffee	Tea	Milk
HOT OR ICED		Postum

STEAK WITH ABOVE DINNER \$4.25  
Including Salad

### Low Calorie Plate Meal

\$2.00

Grilled Lamb Chop—With Slice Orange  
String Beans      Lettuce and Green Pepper Salad  
One Slice Whole Wheat Bread  
Ice Cream      Coffee or Tea

STEWARD

Will appreciate any errors or omissions in service being called to his attention.

### A SELECTION OF DINNER WINES IS AVAILABLE ON THIS DINING CAR

Burgundy*	6 oz. bot. \$.65	Port*	6 oz. bot. \$.65
Claret*	6 oz. bot. \$.65 12 oz. bot. 1.00	Sauterne**	12 oz. bot. 1.75
Sauterne*	6 oz. bot. .65 12 oz. bot. 1.00	Claret**	12 oz. bot. 1.75
Sherry*	6 oz. bot. .65	Sherry**	2 oz. bot. .75
Muscatel*	6 oz. bot. .65	Champagne*	6 oz. bot. 1.50
*CALIFORNIA		**IMPORTED	

## A LA CARTE

<b>Soups</b>		Cup 30, Tureen 40 (Clam Chowder available on Fridays) Crackers Served with Soups
<b>Fish</b>		Fresh Seasonable Fish, Broiled or Fried 1.00
<b>Eggs, Meats, etc.</b>		Eggs, Fried, Boiled, Scrambled, Shirred or Poached (2) 50 with Toast 65 All Combination Omelets 75      Plain Omelet 50 All Roast Meats 1.25      Fried Spring Chicken (Half) 1.20 G. N. Chicken Pie 1.00      Chops (2) 1.25 Broiled Sirloin Steak 2.75
<b>Vegetables</b>		Green Peas 30      Potatoes to Order 25      Stringless Beans 30 Seasonable Fresh Vegetables 30
<b>The Salad Bowl</b>		Lettuce, Tomatoes, Cucumbers, Radishes, Green Peppers, Seventy-Five Cents per Person
<b>Salads with Dressing</b>		Pear and Cottage Cheese 65      Pineapple, Grapefruit and Orange 65 Tomato and Cucumber 65      Crackers Served with All Salads
<b>Sandwiches</b>		Ham or Egg on Toast 55 Peanut Butter or Cheese on Toast 45      Club House 1.00 Sliced Chicken on Toast 80      Cold Roast Meat 75
<b>Desserts</b>		Pies: Various 35, Ala Mode 45      Home Made Cake 25 Berry Shortcake 45      Cheese and Toasted Crackers 50 Ice Cream with Cake 40      Select Ice Cream 25 Preserved Plums, Peaches, Pears 35 Chilled Melon 25
<b>Breads</b>		Bread and Butter 25      Plain or Buttered Toast 25 Ry-Krisp 25
<b>Beverages</b>		Instant Sanka Coffee, Pot 30      Black or Green Tea, Pot 30 Coffee, Chocolate or Postum, Pot 30 Sweet Milk 20, Buttermilk 15      Malted Milk 35 Hot Breads and Pies are Baked on this Car daily

### FOR THE LITTLE FOLKS

Popular Brand Sieved Vegetables and Fruits, Prune Juice,  
Tomato Juice, Orange Juice, Jello. Each twenty cents.

A. W. DELEEN, General Superintendent Dining Cars, St. Paul, Minnesota

A service charge of twenty-five cents is made for each adult person served outside of  
dining car.  
This service is subject to delay when dining car is busy.

Form 2886-EB-D-1-54