

# Budd Sleeper-Coach comfort hits a new

## HIGH!

"HEIGHT OF LUXURY AT  
LOWEST FARE" OFFERED  
IN NEW SEABOARD  
AND ATLANTIC COAST  
LINE SLEEPER COACHES

Budd never loses interest in trains once sold. Budd men ride Budd trains, alert to public reaction on every detail. Suggestions are sought and worth-while ones discussed with buyers of new Budd equipment. Forward-looking railroad men agree with Budd in wanting to make good trains better.

Why? Because greater comfort and luxury draw more passengers. A Sleeper Coach with all seats filled at day-coach fares yields more revenue to the railroad than any other type of sleeping-car equipment . . . and experience shows that seats are filled!

The new Sleeper Coaches put on the New York-Florida run last month by Seaboard and Atlantic Coast Line

are outstanding examples of this policy of continuing improvement. They offer many innovations, some for the first time on any railroad train.

But with all the new features of these Budd Sleeper Coaches, the fundamental idea of light-weight with thorough safety has NOT been changed. Budd Sleeper Coaches are built throughout of stainless steel, the strongest and most expensive material used structurally today. They're fabricated by the exclusive SHOTWELD\* process, invented and patented by Budd.

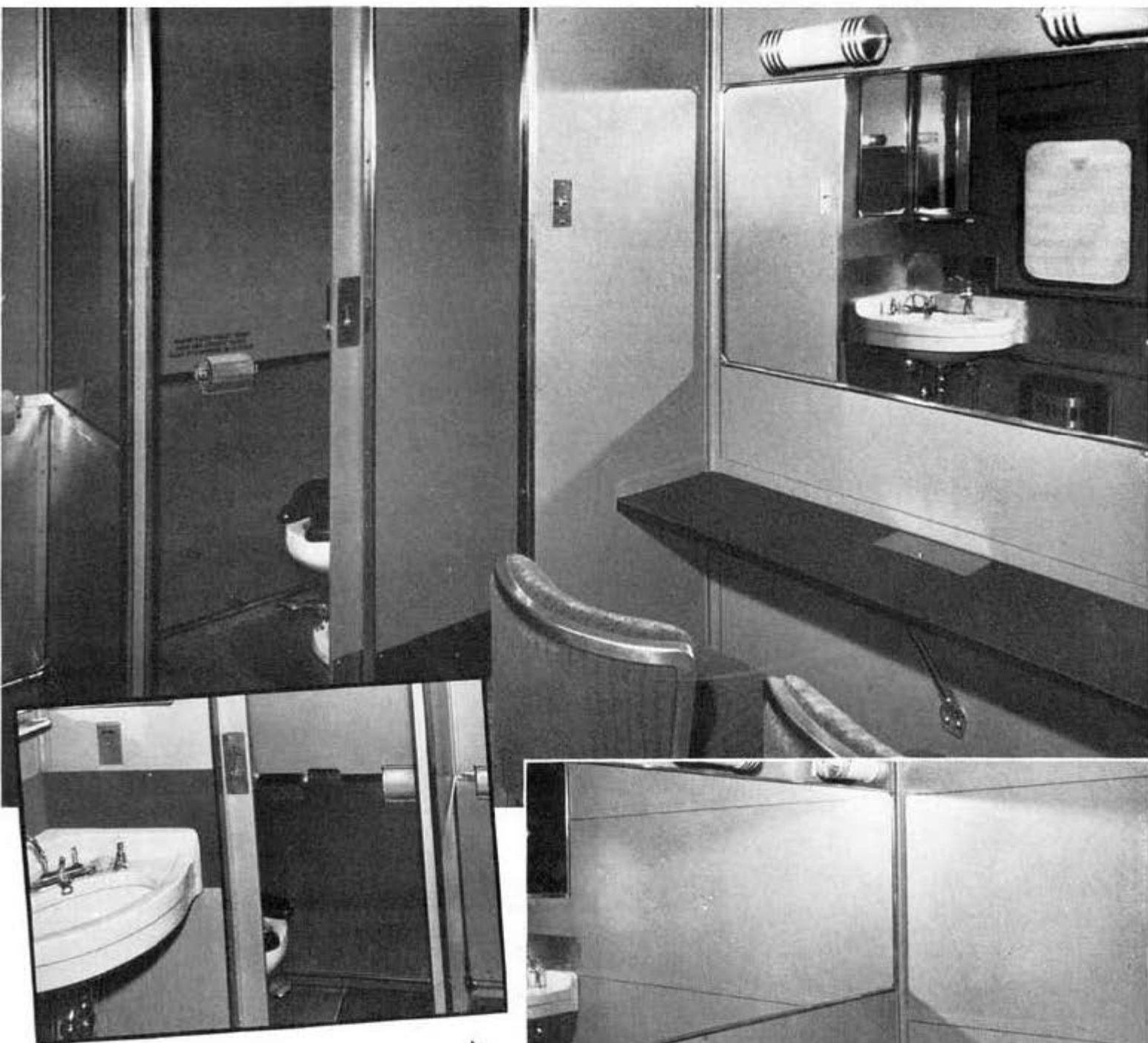
Budd methods safely eliminate dead weight.

EDWARD G. BUDD MANUFACTURING CO.  
PHILADELPHIA

\*Reg. U. S. Pat. Off.

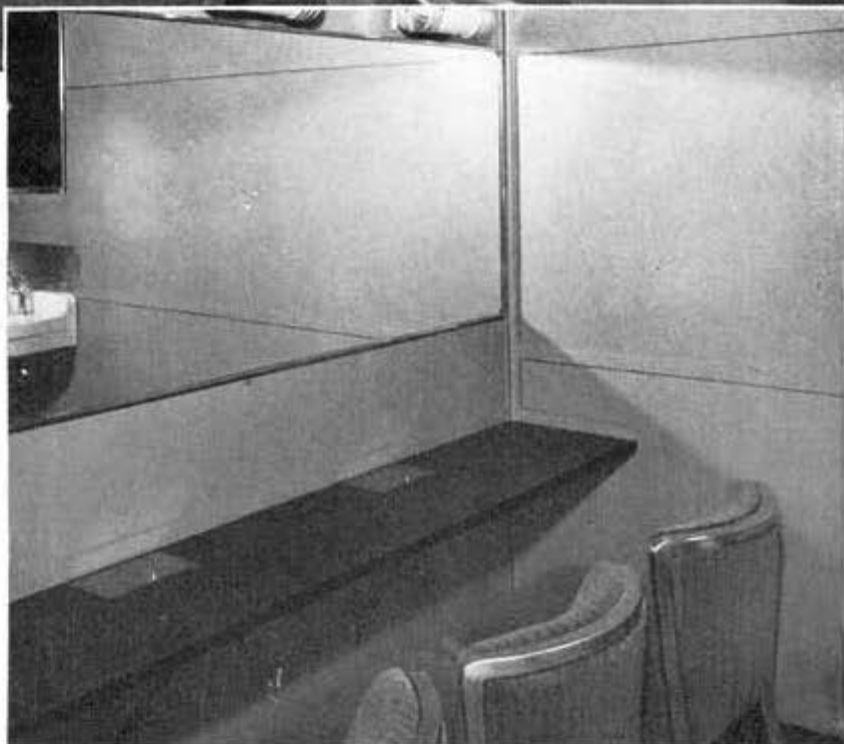


# DETAILS of the newest



• Two separate toilets in each dressing-room, entered through sliding doors, are important features of both women's and men's dressing-rooms. In the women's dressing-room, shown above, a floor-to-ceiling partition shields the room from view of passers-by in the companionway, and eliminates the necessity for the customary, troublesome curtain. (Inset shows second toilet.)

• A long dressing-table and full-width mirror allow three women to make their toilet at the same time. The women's as well as the men's dressing-rooms are equipped with three washbasins.



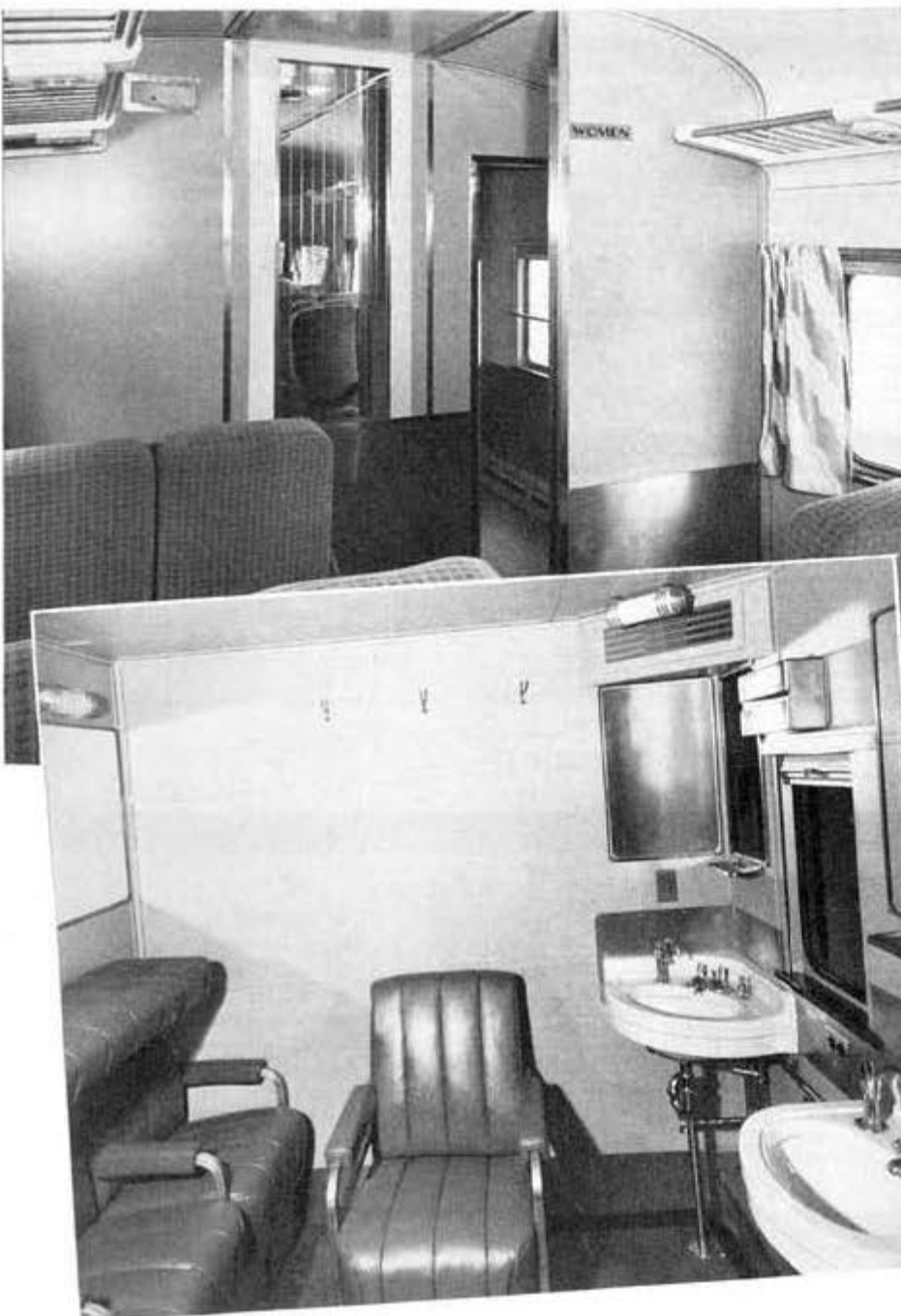
# Budd Sleeper Coaches

• A small unobtrusive drinking alcove is located in the companionway. (The mechanical equipment is installed above the ceiling.) Baggage racks in all of the new Sleeper Coaches have been widened and include individual reading and night lights for each pair of reclining seats.

• There are no bulkhead seats in the new Budd Sleeper Coaches. All seats are fully reclining. All seats face forward. A floor-to-ceiling partition shields the companionway from the central part of the coach, assuring utmost privacy and comfort for passengers in front seats.



• On the Atlantic Coast Line's new Sleeper Coaches, seats are equipped with individual, rubber-covered footrests, which the passenger can adjust for his own comfort.

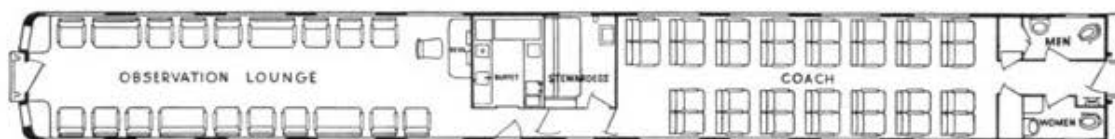


• In the men's dressing-rooms, the conventional sofa has been replaced by three individual seats. This room has two separate toilets and three washbasins.

# FLOOR-PLANS

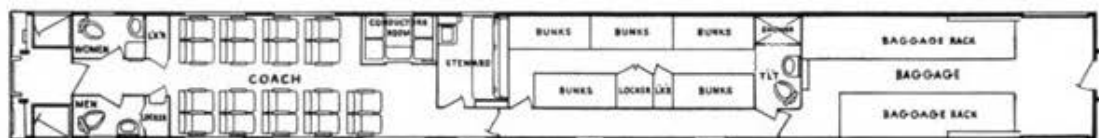
## OF THE NEWEST BUDD SLEEPER COACHES

• Plan of the new 56-passenger Budd Sleeper Coaches now in operation on the Atlantic Coast Line Champions and the Seaboard Silver Meteors between New York and Florida. All seats are reclining. All seats face forward.



• The Seaboard's new coach-observation features a new rear-end design and rectangular lounge. In addition, there is a bedroom for the stewardess, a service buffet, reclining seats for 30 passengers and two dressing-rooms.

• The Atlantic Coast Line's new tavern-observation is designed with a new rear-end contour and rectangular lounge. This entire car is designed for recreational purposes with cocktail bar and radio.



• The Seaboard's new baggage-crew-coach unit includes a "train office" for the conductor's use, steward's bedroom, sleeping quarters and washroom facilities for 15 crew members, reclining chairs for 18 passengers.

# BUDD

METHODS SAFELY ELIMINATE DEAD WEIGHT