

THE
ULTIMATE...
in
Comfort!

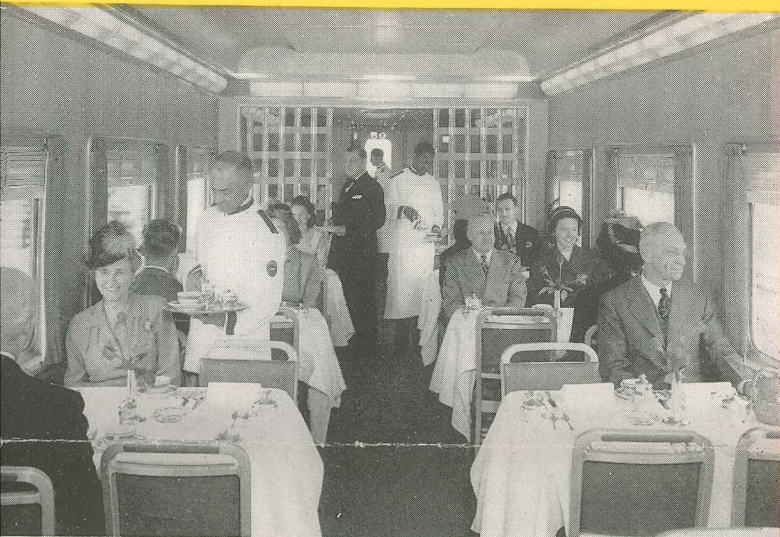


THE NEW WABASH
Streamliner
"CITY of KANSAS CITY"

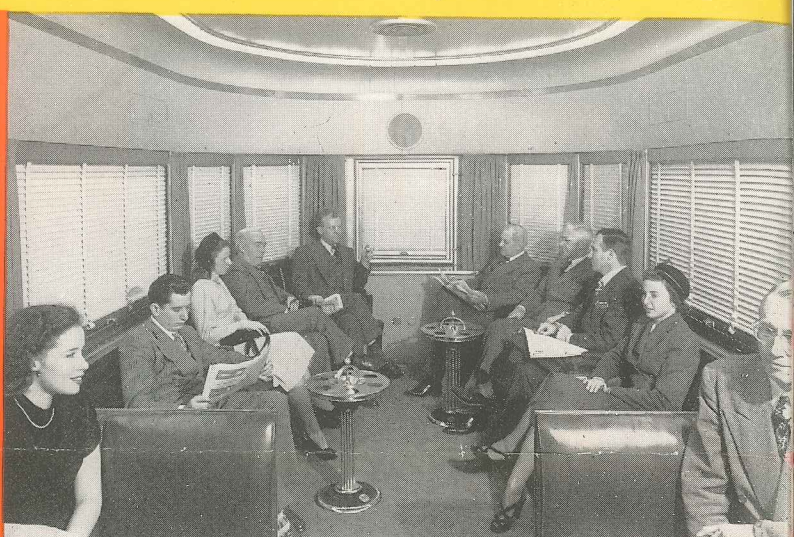


DAILY BETWEEN ST. LOUIS AND KANSAS CITY

Just a few of the Luxurious Features of this Great New Wabash Streamliner



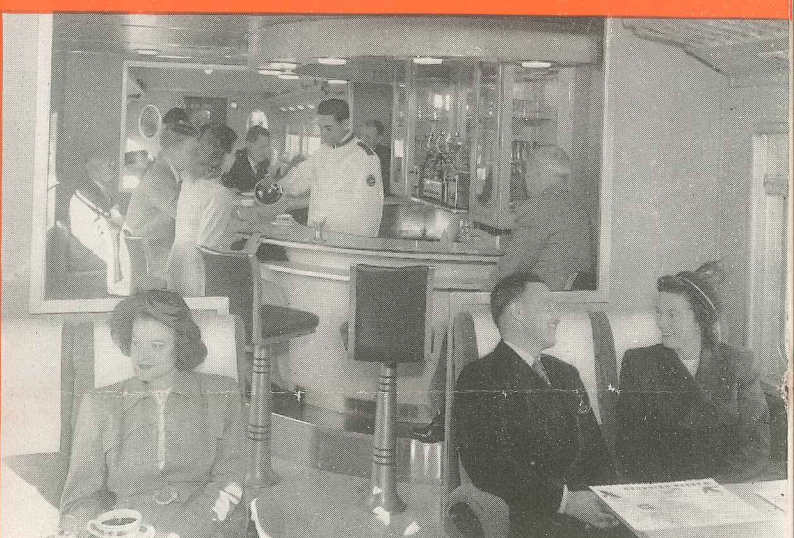
Here's the WABASH finer diner . . . beautifully decorated in keeping with the superb appointments of this sleek Streamliner. At the far end of the photo is the cozy cocktail lounge.



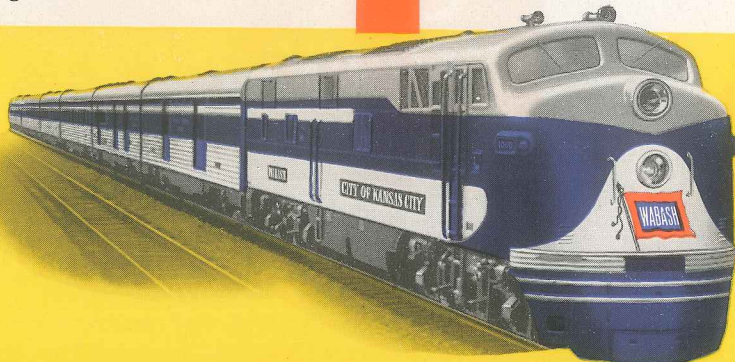
It's easy ridin' as you listen to the radio in the spacious Observation Parlor-Lounge of the "City of Kansas City." This car also has a Drawing Room complete with lavatory and clothes closet.



Coaches have separate Smoking Rooms, where passengers may enjoy a smoke without annoyance to others. It's attention to such details that makes the "City of Kansas City" a truly great train.



New, beautiful Coffee-Shop-Club car is an ideal spot for conviviality, between-meals snacks or light meal service and soft drinks. Smoking is permitted throughout this car.



Restful, relaxing Sleepy Hollow Seats adjust to revolve and recline. Twin-Lens lighting provides individually controlled lights, directing a beam on those passengers desiring more light — without annoyance to their neighbors.



Now . . . a dream comes true! The great WABASH Streamliner, "City of Kansas City," is an innovation in pleasure planning. Seats for 205 revenue passengers . . . and an additional 104 seats for lounge and recreation purposes. *Extra* comfort . . . at *no* extra fare!

SEE
BACK COVER
FOR HANDY
TIMETABLE



Carefully Planned
Schedules
OF THE NEW WABASH STREAMLINER
"City of Kansas City"

**TRAIN
No. 3**

"City of Kansas City"

Lv. St. Louis	- - - - - (C. T.)	9:10 A. M.
Lv. Delmar Station	- - - - -	9:23 A. M.
Lv. St. Charles	- - - - - o	9:45 A. M.
Lv. Mexico	- - - - -	11:01 A. M.
Lv. Centralia	- - - - -	11:18 A. M.
Ar. Moberly	- - - - -	11:45 A. M.
Lv. Moberly	- - - - -	11:48 A. M.
Lv. Salisbury	- - - - - g	12:12 P. M.
Lv. Brunswick	- - - - - g	12:30 P. M.
Lv. Carrollton	- - - - -	12:58 P. M.
Lv. Henrietta	- - - - - g	1:24 P. M.
Ar. Kansas City	- - - - -	2:30 P. M.

**TRAIN
No. 12**

"City of Kansas City"

Lv. Kansas City	- - - - - (C. T.)	4:50 P. M.
Lv. Henrietta	- - - - - g	5:42 P. M.
Lv. Carrollton	- - - - -	6:09 P. M.
Lv. Brunswick	- - - - - g	6:36 P. M.
Lv. Salisbury	- - - - -	6:58 P. M.
Ar. Moberly	- - - - -	7:22 P. M.
Lv. Moberly	- - - - -	7:27 P. M.
Lv. Centralia	- - - - -	7:55 P. M.
Lv. Mexico	- - - - -	8:12 P. M.
Lv. St. Charles	- - - - - m	9:32 P. M.
Ar. Delmar Station	- - - - -	9:55 P. M.
Ar. St. Louis	- - - - -	10:20 P. M.

o—Stops on signal to receive revenue passengers for Mexico, Centralia, Moberly, Carrollton and Kansas City.

g—Stops on signal to discharge or receive revenue passengers from or to scheduled stops.

m—Stops on signal to discharge revenue passengers from Kansas City or Carrollton, and on Sundays to receive revenue passengers for St. Louis.