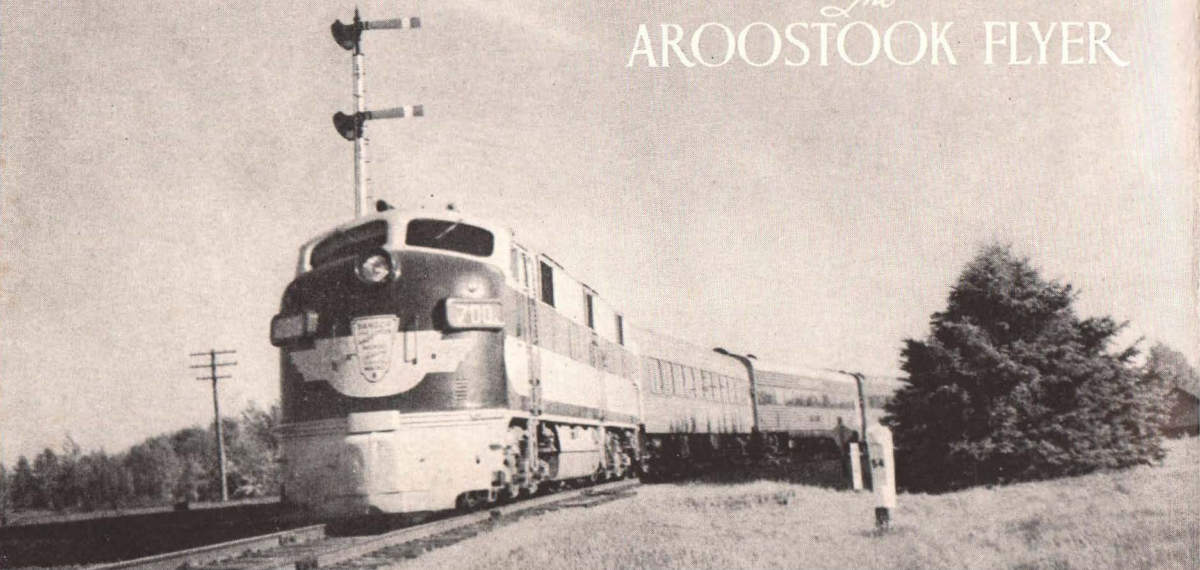


The
BANGOR AND AROOSTOOK
RAILROAD
BRINGS SMART NEW
Comfort *to northern*
MAINE



The
AROOSTOOK FLYER





New Comfort

Modern coaches—modern Pullmans—modern buffet-lounge cars—are available for your comfort and convenience when you travel Bangor and Aroostook.

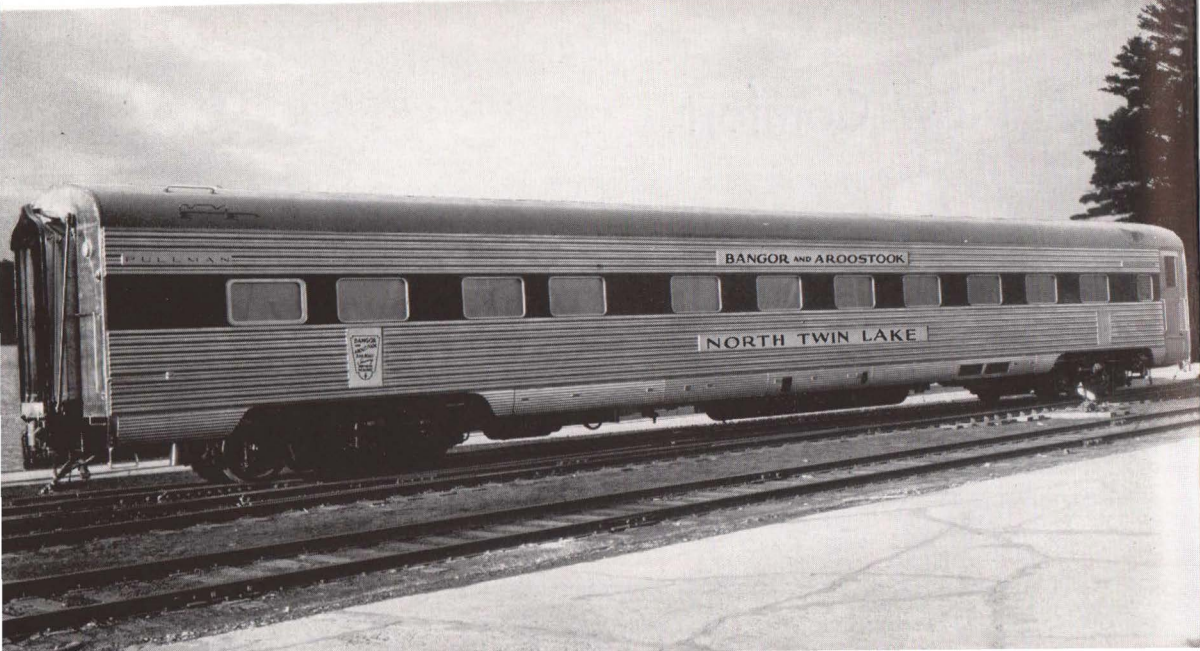
Of course all cars are air-conditioned—that goes without saying.

Of course the Pullmans are brand new—modern—luxurious—comfortable and restful.

Of course the coaches have reclining seats.

Of course the buffet lounge cars are tastefully decorated with big, soft, individual chairs where you may relax and read your favorite magazines—available to all passengers.

And of course you may eat delicious satisfying meals in the buffet section or enjoy your favorite beverage in any part of the buffet lounge car—the beverages are moderately priced, too.



PULLMAN

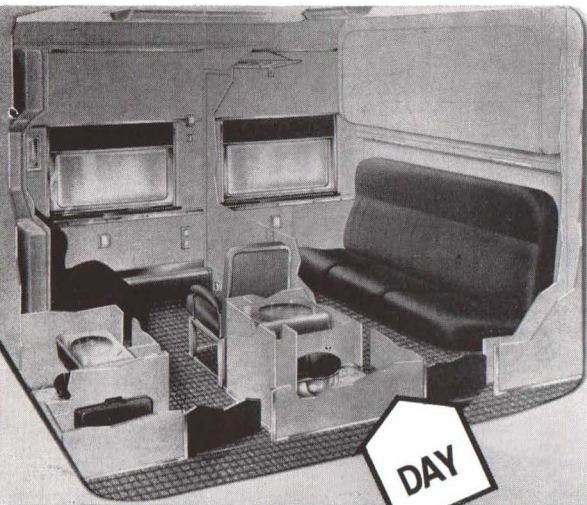
BANGOR AND AROOSTOOK

NORTH TWIN LAKE



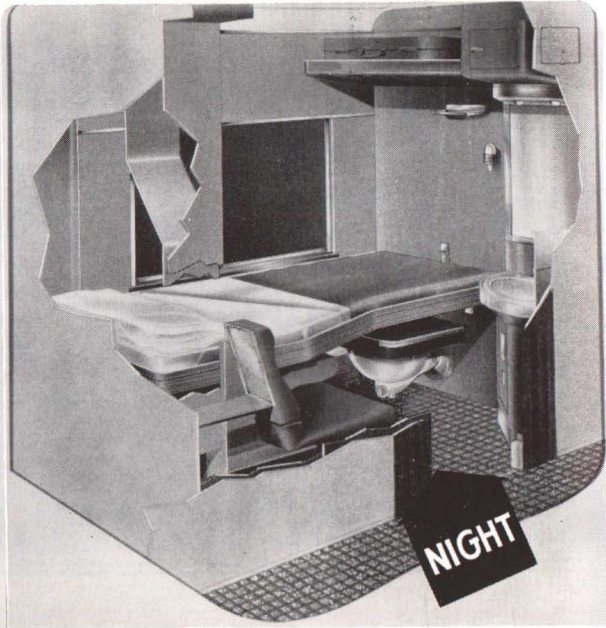
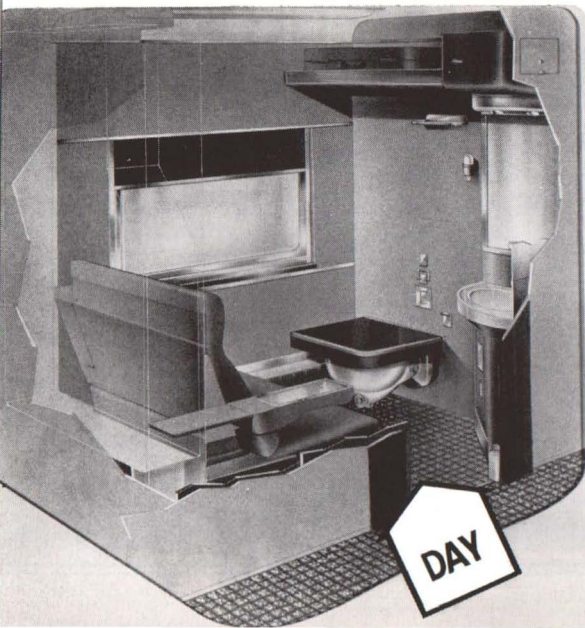


The new Bangor and Aroostook Pullman Cars are the very latest in modern design. They combine exterior and interior beauty with modern, air-conditioned accommodations. Each car contains four double bedrooms, six roomettes and six standard sections. The bedrooms are arranged so that a sliding partition between two may be removed to make a bedroom suite, which is comparable to and more comfortable than Drawing Room accommodations. All berths have the latest foam rubber mattresses for restful sleeping. In addition to the physical comforts and conveniences, Pullman employees, proud of their art of serving, are in attendance at all times.



Bedroom

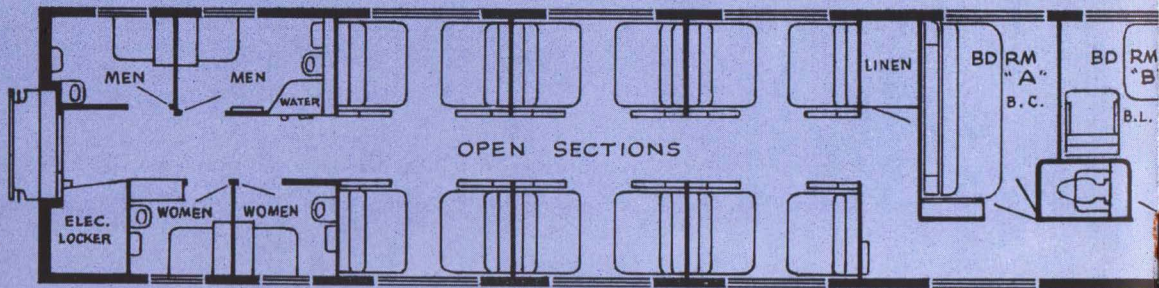
THE BEDROOMS are built to accommodate two people. However, if one person traveling alone wishes the extra room only one fare is required to occupy this generous space. Each bedroom is provided with enclosed toilet and wash basin facilities. They are air-conditioned and have separate heat controls. Other conveniences include a wardrobe locker, full length mirror, electric razor outlets, ample luggage space, folding arm-rests and shoe lockers. These bedrooms are favorites with families and with businessmen who wish to make a "closed conference room" for several people. A partition designed for rigidity and sound deadening qualities folds and slides back to make ensuite arrangements which gives more room accommodating two to four people.



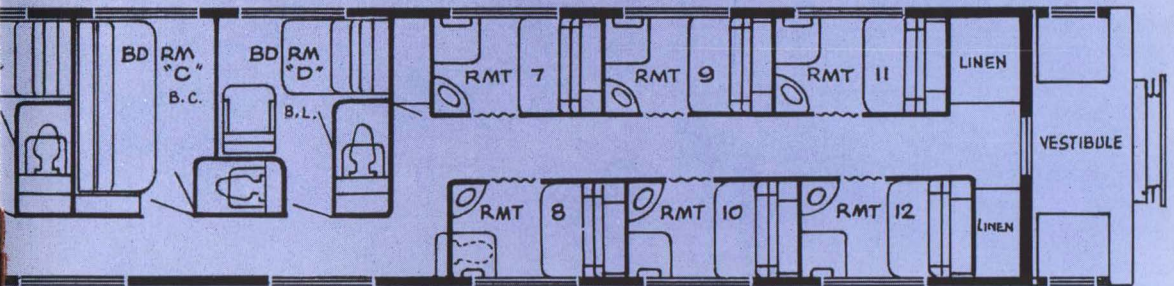


Roomette

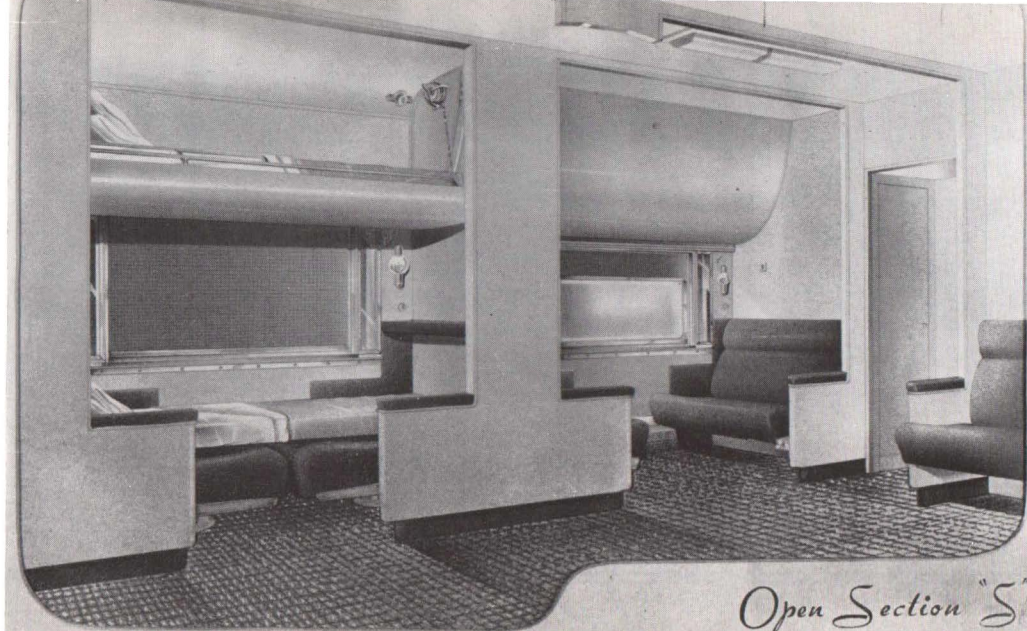
THE ROOMETTE is a completely enclosed private room containing a pre-made bed, affording accommodation for one person. In daytime the bed folds flush into the wall at one end of the room and the passenger has a sofa of the latest and most comfortable contour with ample space for lounging before the bed is lowered for night time use. The newly designed cut-a-way folding bed has fingertip control with the Pullman Standard counter-balance mechanism, allowing passengers to lower or raise the bed without stepping out into the aisle. As in the bedrooms, the wash stand is convertible into a dressing table.



FLOOR PLAN OF PULLMAN CAR SHOWING ARRANG



EMENT OF BEDROOMS, ROOMETTES AND SECTIONS



Open Section "S"



Section

THE SECTION is a combination of upper and lower berths each providing adequate accommodations with convenient lights, a shelf to hold toilet articles, hangers for your clothes and a bell with which to summon the porter at any hour. A Safety Ladder makes entrance and exit easy. The lower berth is furnished with individual lights, a shelf for sundry articles, two convenient clothes hangers. Either the upper berth, lower berth or a section occupied by one person appeals to passengers who prefer this comfortable budget priced type of accommodation. Modern men's and women's lounges are provided at the end of the car.



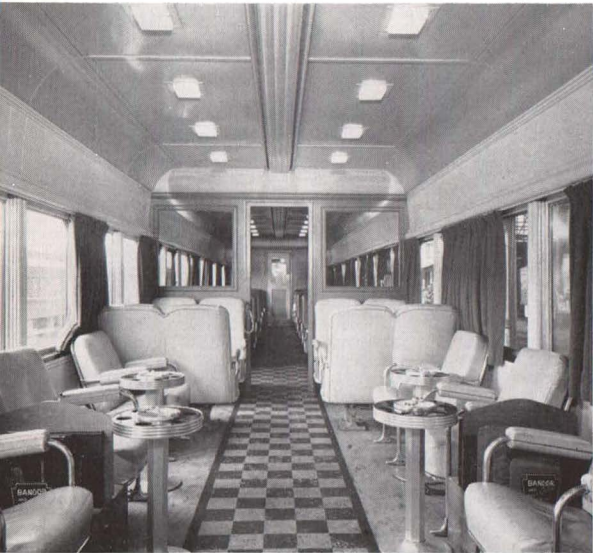


Coach

Your Bangor and Aroostook coaches are the finest in the land ... up to the minute stainless steel, streamlined cars with mechanically controlled air-conditioning and a touch of luxury in their comfortable reclining chair seats. Wide panorama picture windows and shadowless overhead lighting add beauty and restfulness to the well appointed interiors.

For those who wish to smoke, there are comfortable seats in a compartment separated from the main car by a glass partition.

With this type of equipment, coach travel on Bangor and Aroostook trains is America's greatest travel bargain.





Buffet Lounge

Your Bangor and Aroostook Buffet Lounge Car is truly a private club on wheels. Your membership card is a Bangor and Aroostook rail ticket—either Coach or Pullman.

In this comfortable car you will find the latest magazines for your enjoyment, comfortable lounge chairs, wide panorama picture windows and soft lighting.

In the dining section of the car you may enjoy wholesome New England food at moderate prices.

Your favorite beverage will be served to you either at your table or in the lounge section of the car.





Service

On preceding pages you have seen and read about our up-to-date passenger equipment. We hope that it looked so attractive to you that you will want to use it at your first opportunity

The best part of it is that travel by B and A train is most economical. Local round-trip coach tickets may be purchased for as little as one and three-quarter cents per mile.

For your convenience and comfort there are through coaches each way between Van Buren and Boston. Through sleeping cars also operate each way between these points—daily except Sunday.

Next time you travel go B and A and travel in luxury and comfort with peace-of-mind.

The Station Agent in your town will be glad to help you with schedules and tickets.

NORTHERN MAINE'S NAME TRAINS...

The
AROOSTOOK FLYER
and the
POTATOLAND SPECIAL

