



The GOLDEN GATE INTERNATIONAL EXPOSITION

The Golden Gate International Exposition, a pageant of the Pacific, is a \$50,000,000 Fair, planned and executed on a grand scale although in extremely compact form. Its setting on Treasure Island in the middle of San Francisco Bay grips the imagination. By day it is an enchanted city whose walls and towers recall the temples of the Mayas, the Incas and the Cambodians; by night it is a glowing fairyland suspended between bay and sky.

Treasure Island — the largest man-made island — affords inspiring views of the San Francisco-Oakland Bay Bridge, Golden Gate Bridge, Alcatraz and other islands of the Bay, and San Francisco's skyline. The climate is mild and equable. The Exposition is readily accessible by special ferry or by automobile via the Bay Bridge.

This magic city displays an entirely new "Pacific" style of architecture — strange, high-walled buildings, surmounted by Oriental spires and massive elephants, spaced by stately courts and radiating from a 400-foot Tower of the Sun. Millions of exotic flowers and shrubs and stately trees have been planted.

To Treasure Island have been brought unique objects of interest from China and Japan, native villages from the South Sea Islands, temples from the Indies, rare books and priceless paintings, and the world's latest miracles of science, agriculture and industry.

TRAVEL OFFICES

ATLANTA, GEORGIA	Burlington Route, 518 Healey Bldg.
BIRMINGHAM, ALA.	Burlington Route, 927 Brown-Marx Bldg.
BOSTON, MASS.	Burlington Route, 80 Boylston St.
CHICAGO, ILLINOIS	Burlington Route, 179 W. Jackson St. D. & R. G. W., 805 Bankers Bldg. Western Pacific, 1300 Bankers Bldg.
CINCINNATI, OHIO	Burlington Route, 505 Dixie Terminal Bldg. D. & R. G. W., 337 Dixie Terminal Bldg. Western Pacific, 704 Dixie Terminal Bldg.
CLEVELAND, OHIO	Burlington Route, 1033 Terminal Tower
COLORADO SPRINGS	D. & R. G. W., 206 Exch. Natl. Bank Bldg. Burlington Route, 316 Exch. Natl. Bank Bldg.
DALLAS, TEXAS	Burlington Route, 701 Kirby Bldg. D. & R. G. W., 1317 Liberty Bank Bldg.
DENVER, COLORADO	Burlington Route, 901—17th St. D. & R. G. W., 624—17th St.
DES MOINES, IOWA	Burlington Route, 6th & Mulberry
DETROIT, MICHIGAN	Burlington Route, 704 Transportation Bldg. D. & R. G. W., 5-123 General Motors Bldg. Western Pacific, 4-268 General Motors Bldg.
FRESNO, CALIFORNIA	Western Pacific, 501 Mason Bldg.
INDIANAPOLIS, IND.	Burlington Route, 901 Merchants Bank Bldg.
JACKSONVILLE, FLA.	Burlington Route, 304 Barnett Natl. Bk. Bldg.
KANSAS CITY, MO.	Burlington Route, 11th & Grand Ave. D. & R. G. W., 524 Railway Exch. Bldg.
LINCOLN, NEBRASKA	Burlington Route, 11th & P Sts.
LOS ANGELES, CAL.	Western Pacific, 518 Associated Realty Bldg. D. & R. G. W., 514 Central Bldg. Burlington Route, 1010 Van Nuys Bldg.
MILWAUKEE, WIS.	Burlington Route, 1003 Majestic Bldg.
NEW ORLEANS, LA.	Burlington Route, 228 Baronne St.
NEW YORK CITY	Burlington Route, Room 420, 500 Fifth Ave. D. & R. G. W.-W. P., Rm. 1402, 500 Fifth Ave.
OAKLAND, CAL.	Western Pacific, 436—13th St. D. & R. G. W., 514 Central Bank Bldg. Burlington Route, 512 Central Bank Bldg.
OGDEN, UTAH	D. & R. G. W., 130—24th St.
OKLAHOMA CITY	Burlington Route, 856 First Natl. Bldg.
OMAHA, NEBRASKA	Burlington Route, 301 S. 16th St. D. & R. G. W., 912 Woodmen of World Bldg. Western Pacific, 616 Farnam Bldg.
PHILADELPHIA, PA.	Burlington Route, 215 North American Bldg.
PITTSBURGH, PA.	Burlington Route, 2620 Koppers Bldg. D. & R. G. W.-W. P., 307 Park Bldg.
PORTLAND, OREGON	Burlington Route, 217 American Bank Bldg. D. & R. G. W., 317 Pacific Bldg. Western Pacific, 306 American Bank Bldg.
PUEBLO, COLORADO	D. & R. G. W., Union Station Burlington Route, 623 N. Main St.
RENO, NEVADA	Western Pacific Station
SACRAMENTO, CAL.	Western Pacific, 12th & I Sts. D. & R. G. W., 24 S. Main St.
SALT LAKE CITY	Western Pacific, 24 S. Main St. Burlington Route, 218 Kearns Bldg.
SAN FRANCISCO, CAL.	Western Pacific, 287 Geary St. D. & R. G. W., 291 Monadnock Bldg. Burlington Route, 999 Monadnock Bldg.
SAN JOSE, CAL.	Western Pacific, 40 W. San Carlos St.
SEATTLE, WASH.	Burlington Route, 1401 Duane Union Bldg. Western Pacific, 1414 10th Ave. Bldg.
ST. JOSEPH, MO.	Burlington Route, 110 S. First
ST. LOUIS, MO.	Burlington Route, 222 N. Broadway D. & R. G. W., 18 Olive St. Western Pacific, 222 Olive St.
STOCKTON, CAL.	Western Pacific, 911 Bank of America Bldg.
WASHINGTON, D. C.	Burlington Route, 1000 Woodward Bldg.



A. COTSWORTH, Jr.
Pass. Traffic Manager
Chicago, Ill.



H. I. SCOFIELD
Pass. Traffic Manager
Denver, Colo.



J. G. WHEELER
General Pass. Agent
San Francisco, Cal.

NEW THRU TRAIN SERVICE

The EXPOSITION FLYER

The Scenic Way across America

between CHICAGO and SAN FRANCISCO

via OMAHA • LINCOLN • DENVER

THE COLORADO ROCKIES

GLENWOOD SPRINGS

SALT LAKE CITY • UTAH

FEATHER RIVER CANYON

SACRAMENTO VALLEY

COMMENCING
JUNE 10, 1939



A Fast New THRU TRAIN SERVICE between CHICAGO and CALIFORNIA

In celebration of the Golden Gate International Exposition, three major Western railroads — the Burlington Route, the Denver & Rio Grande Western, and the Western Pacific — inaugurate a new fast through train service, the EXPOSITION FLYER, between Chicago and San Francisco, effective June 10.

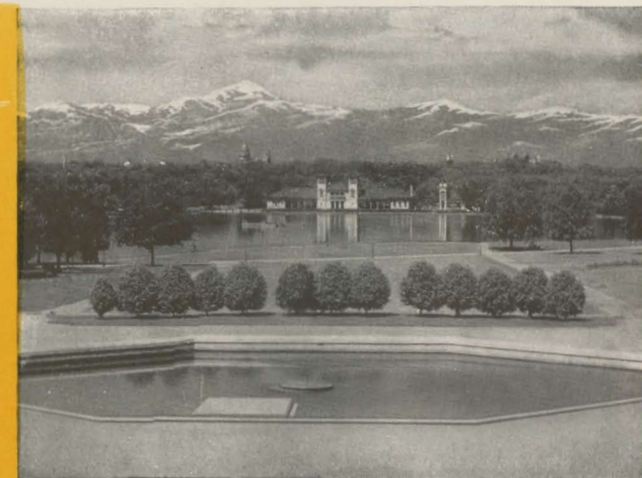
Its schedule has been arranged to give travelers daylight views from their car windows of some of the finest scenery in Western America — the rugged Gore Canyon of the Colorado River, the majestic Rocky Mountains, colorful Utah and Nevada, and the beautiful Feather River Canyon through the Sierra Nevada mountains of California.

In addition to serving the San Francisco Exposition, the EXPOSITION FLYER affords splendid new service between Chicago and Omaha, Lincoln, Denver, Rocky Mountain National Park, Western Colorado and Mesa Verde National Park, Salt Lake City and Utah, Nevada, and Sacramento Valley points in California.

Westbound, the EXPOSITION FLYER leaves Chicago at 12:35 PM, after arrival of scores of important trains from all parts of the East and South. Eastbound, the EXPOSITION FLYER reaches Chicago at 12:30 PM, making convenient connections with scores of important trains to the East and South.

The EXPOSITION FLYER also carries through St. Louis-San Francisco standard Pullman cars and St. Louis-Denver chair car, moving between St. Louis, Kansas City and Lincoln on the General Pershing Zephyr.

Denver lies at the foot of the Rockies



Temple Square in Salt Lake City



This train also carries through standard and tourist Pullman cars between Chicago and San Francisco moving between Denver and Salt Lake City via the Royal Gorge on the Scenic Limited of the Rio Grande. Westbound, this through car service allows a day stopover in Salt Lake City. Eastbound, the through cars via the Gorge are handled east of Denver on the Burlington ARISTOCRAT reaching Chicago at 7:50 PM.

The EXPOSITION FLYER offers complete and unsurpassed air-conditioned accommodations for all classes of travel — standard Pullman, tourist sleeping car, chair car and coach.

Modern standard Pullmans provide berths, single occupancy sections, compartments and drawing rooms. Tourist sleeping cars are of the latest type.

Dining car service is distinguished by its delicious meals, moderate prices prevailing for table d'hote and a la carte service. Economy meals are served on trays to coach and tourist car passengers at their seats. Breakfast 25c; luncheon 30c; dinner 35c — only 90c a day.

All sleeping car passengers have access to the spacious observation-lounge car, with extra large windows designed especially for sightseeing. Every travel luxury is provided — radio, magazines, newspapers, card tables, refreshment service.

Reclining chairs in coaches invite relaxation. Large dressing rooms, pillows free for overnight passengers, lights dimmed at night, porter service — these are features. The hostess-nurse looks after the comfort and welfare of all EXPOSITION FLYER passengers.

CONDENSED SCHEDULE OF THE EXPOSITION FLYER

Westward—Read Down		Eastward—Read Up	
Example No. 39	Burlington Route	No. 40	Example
Su 12:35 PM Lv. Chicago (CST)	Ar. Lincoln	Ar. St. Louis	Tu 12:30 PM We
Su 4:17 PM Lv. Burlington, Ia.	Ar. Chicago (CST)	Ar. Kansas City	Tu 8:53 AM We
Su 5:50 PM Lv. Ottumwa	Ar. Burlington, Ia.	Ar. St. Joseph	Tu 7:45 AM We
Su 10:20 PM Ar. Omaha, Nebr.	Ar. Ottumwa	Ar. Lincoln	Tu 3:00 AM We
Su 11:35 PM Ar. Lincoln	Ar. Omaha, Nebr.	Lv. Chicago (CST)	Tu 1:55 AM We
Su 2:00 PM Lv. St. Louis	Ar. Lincoln	Lv. Chicago (CST)	Tu 1:00 PM We
Su 7:15 PM Lv. Kansas City	Ar. Lincoln	Lv. Chicago (CST)	Tu 7:45 AM We
Su 8:32 PM Lv. St. Joseph	Ar. Lincoln	Lv. Chicago (CST)	Tu 6:25 AM We
Su 11:45 PM Lv. Lincoln	Ar. Chicago (CST)	Lv. Chicago (CST)	Tu 1:45 AM We
Mo 7:55 AM Ar. Denver (MST)	Lv. Chicago (CST)	Lv. Chicago (CST)	Tu 4:10 PM Tu
Mo 8:35 AM Ar. Denver & Rio Grande Western R. R.	Lv. Chicago (CST)	Lv. Chicago (CST)	Tu 12:59 PM Tu
Mo 10:37 AM Ar. Denver	Lv. Chicago (CST)	Lv. Chicago (CST)	Tu 10:51 AM Tu
Mo 11:24 AM Ar. Moffat Tunnel	Lv. Chicago (CST)	Lv. Chicago (CST)	Tu 10:05 AM Tu
Mo 2:27 PM Ar. Glenwood Springs	Lv. Chicago (CST)	Lv. Chicago (CST)	Tu 6:55 AM Tu
Mo 4:27 PM Ar. Grand Junction	Lv. Chicago (CST)	Lv. Chicago (CST)	Tu 4:50 AM Tu
Mo 11:55 PM Ar. Salt Lake City (MST)	Lv. Chicago (CST)	Lv. Chicago (CST)	Tu 9:30 PM Tu
Mo 11:10 PM Lv. Salt Lake City (PST)	Lv. Chicago (CST)	Lv. Chicago (CST)	Mo 8:15 PM Mo
Tu 12:55 PM Ar. Portola, Cal.	Lv. Chicago (CST)	Lv. Chicago (CST)	Mo 6:40 AM Mo
Tu 5:00 PM Ar. Oroville	Lv. Chicago (CST)	Lv. Chicago (CST)	Su 2:25 AM Su
Tu 6:35 PM Ar. Sacramento	Lv. Chicago (CST)	Lv. Chicago (CST)	Su 12:50 AM Su
Tu 7:30 PM Ar. Stockton	Lv. Chicago (CST)	Lv. Chicago (CST)	Su 11:50 PM Su
Tu 9:55 PM Ar. Oakland Pier	Lv. Chicago (CST)	Lv. Chicago (CST)	Su 9:28 PM Su
Tu 10:30 PM Ar. San Francisco	Lv. Chicago (CST)	Lv. Chicago (CST)	Su 9:00 PM Su

EQUIPMENT

Observation-Lounge Car	} Between Chicago and San Francisco via Moffat Tunnel
Standard Pullman Car	
Tourist Pullman Car	
Reclining Chair Car	
Standard Pullman Car	} Between St. Louis and San Francisco via Moffat Tunnel
Chair Car	
Standard Pullman Car	} Between Chicago and San Francisco via Royal Gorge
Tourist Pullman Car	
Dining Car	Serving all meals
All regularly assigned equipment air-conditioned	

THE SUPERB SCENIC WAY *between* CHICAGO AND THE GOLDEN GATE

The EXPOSITION FLYER, only through train between the Great Lakes and the Pacific via Denver, the Colorado Rockies, Salt Lake City and the Feather River Canyon, is truly "the scenic way across America".

Every daylight hour of its swift flight between Chicago and San Francisco is filled with fascinating, ever-changing panoramas — pastoral countryside, rolling prairie, sheer canyons, incomparable mountains, sharp cut buttes, colorful desert, tumbling torrents, broad rivers, orange and olive groves, fruit orchards, vineyards, rice and grain fields, lakes, bays, islands, and promontories.

Leaving Chicago, second city of the nation, whose broad parks face sparkling Lake Michigan, from the great, modern Union Station, we glide out past bustling factories, through attractive suburban communities, and across the pleasant, diversified farm lands of northern Illinois. We pass through Aurora, busy industrial city and birthplace of the Burlington Route, and Galesburg, site of Knox College and scene of one of the immortal Lincoln-Douglas debates.

The broad, island-dotted waters of the Mississippi River are crossed at Burlington, first territorial capital of Iowa, and the "Flyer" speeds across the fertile, checkerboarded acres of the "tall corn state", passing through Ottumwa, Creston and a score of other substantial cities founded on Iowa's great agricultural wealth.

A great bridge carries us across the brown Missouri River into Nebraska and the important Middle Western metropolis of Omaha. Westward we go across the rich Nebraska fields, through Lincoln, the state capital, Hastings, and other substantial agricultural communities.

As the train approaches the Colorado boundary, the upward climb becomes more perceptible and we enter rolling prairie country dotted with herds of fine cattle. Eyes involuntarily commence scanning the western horizon, and shortly are rewarded with the first glimpse of the snow-capped summits of the front range of the Rockies.

Denver, "Mile High Queen of the Rockies", invites us to linger to enjoy its glorious climate, its parks, golf courses and bathing beaches, to see its imposing buildings and beautiful residential areas, to roam the glorious nearby mountain parks and vacationlands.

Leaving Denver Union Station, we travel on the Denver & Rio Grande Western Railroad via the Moffat Tunnel Route, scenic short-cut straight through the Rockies.

A brief hour from the mile-high city's streets, almost a quarter of Colorado's area spreads out in an all-embracing view, revealing Denver and a dozen cities and the plains, over which we have just come, rolling endlessly eastward.

Riding the ridges along approaches to the Continental Divide, our train darts through a score of little tunnels in the hills, and just 50 miles from the teeming capital of Colorado shoots like an arrow through the rocky backbone of America.

Moffat Tunnel, one of the engineering marvels of the world, extends 6.2 miles under the Continental Divide. The center of the tunnel, 9239 feet in elevation, is 4,021 feet under the lofty summit of James Peak. The tunnel was completed in 1928 at a cost of \$18,000,000.

Down the Pacific slope of the Continent the track parallels the Colorado River for 235 entrancing miles. First, a rippling brook fed from melting snows on the sky-piercing peaks, the Colorado soon becomes a restless torrent, dashing over jagged boulders and through towering canyons. Great clefts like Gore Canyon, longer and deeper than most mountain chasms, reveal on their walls the whole geological history of the Rocky Mountains.

Glenwood Canyon, portraying the Rockies in festive mood, with countless evergreens brightening red rock walls, is the enchanting passageway to Glenwood Springs, famous spa and playground cradled in the bosom of the mountains. A little farther on, through rich peach orchards, we enter Grand Junction, gateway to Western Colorado.

Westward the scenic Rio Grande weaves its way into Utah, across Green River, through the rocky portals of Castle Gate, and over Soldier Summit down into the Great Salt Lake Basin. We pass through Provo, in the shadow of glacier-crowned Mt. Timpanogos and surrounded by orchards and sugar beet fields, catch a fleeting glimpse of Utah Lake, then cut through the Jordan Narrows to Salt Lake City, fascinating metropolis reared from barren sands on the shore of a dead sea by the dauntless Mormons.

Founded in 1847 by Brigham Young, who had trekked 1300 miles through the wilderness with his followers from Nauvoo, Illinois, Salt Lake City has a delightful individuality and sightseeing attractions that few travelers can resist. Set in the heart of this mountain-encircled city of extraordinarily wide streets and long blocks is Temple Square, containing the impressive Mormon Temple and great-domed Tabernacle,

where visitors are welcome to enjoy noon recitals on its renowned pipe organ. Saltair Beach is an attractive resort on the shores of Great Salt Lake, whose waters are so buoyant it is impossible for a bather to sink.

Leaving Salt Lake City on the Western Pacific, we pass the great Garfield smelters, whose copper ores come from the inexhaustible open-cut Bingham mines just over the divide, then ride for miles along the shore of Great Salt Lake, America's inland sea, largest remnant of prehistoric Lake Bonneville whose ancient shoreline is still visible high above the railroad tracks.

Just west of the Great Salt Lake, the track is laid for miles on the glistening rock-hard crystals of Bonneville Salt Flats where Captain Eyston in 1938 set the world's land speed record in his thundering automotive juggernaut. Here is a land of limitless distances, a land where the salt-laden atmosphere produces sunsets and sunrises that are colorful beyond description!

At Wendover, the tracks leave the salt beds and begin the ascent of the Toano Range, which the Indians called "Mountains of the Night", and whose Pilot Peak, 10,704 feet, served as a landmark in covered wagon days.

Westward, the route lies across the northern Nevada plateau, a great cattle country, along the meandering Humboldt River through Palisade Canyon, and thence up into the foothills of the mighty Sierra Nevada Range.

At a lower elevation than any other railroad through the Sierras, the Western Pacific crosses Beckwourth Pass, named for the Indian scout who discovered it, and enters the upper end of the rugged and picturesque Feather River Canyon, whose waters lead via easy grades down to the Pacific.

For 120 miles the tracks run through this entrancing canyon, noted as a sportsman's paradise and vacationland, and famous for the millions in gold which the Forty Niners panned from its shining gravel bars or sluiced from ancient river beds high up on the precipitous walls of the canyon. The Feather River was named "Rio de las Plumas" by Don Luis Arguello in 1820 because of quantities of wild pigeon feathers on its surface.

Off to the north, as the train descends the canyon, is Lassen Volcanic National Park where Lassen Peak burst into violent eruption in 1914-15. At Bidwell Bar, the train passes close by an historic suspension bridge, built in 1854 with cables brought around "the Horn" in

clipper ships. Nearby stands the "Mother Orange Tree", largest in the world, planted in 1856.

Feather River Canyon opens into the Sacramento Valley at Oroville, historic "gold city" of the Argonauts, and the railroad strikes southward through the fertile valley with its fields of grain and rice, fruitful orchards and groves of oranges and olives. Just before entering Sacramento, California's state capital, site of Sutter's Fort and terminus of the Pony Express, the train crosses the American River, on whose headwaters James Marshall discovered gold in 1848.

It is a brief ride through grape vineyards to Stockton, metropolis of the North San Joaquin Valley and the great Sacramento-San Joaquin delta region, fabulously fertile producer of asparagus and fruits. The Mother Lode, made famous in prose and verse by Mark Twain and Bret Harte, lies only a few miles to the east in the Sierra foothills.

From Stockton our train climbs to Altamont Pass, and after emerging into the Livermore Valley, guarded on the north by Mount Diablo (Devil Mountain), pierces the Coast Range via Niles Canyon.

Soon the traveler is in Oakland, third largest California city, and at Oakland Pier boards the waiting ferry for the climactic voyage across San Francisco Bay. Looking aft, he beholds the East Bay cities of Oakland, Berkeley and Piedmont climbing the Contra Costa Hills to their very summits. Soon the ferry passes under the gigantic steel spans of the San Francisco-Oakland Bay Bridge and rounding Yerba Buena Island affords a close-up view of the Golden Gate International Exposition on Treasure Island. Ahead, as the ferry glides on across the Bay, San Francisco's towering buildings rise hill on hill to meet the sky atop Twin Peaks at the head of Market Street. The eye follows the sweep of the Embarcadero, at whose piers are docked ships from every port on the globe, to the solemn gloom of Alcatraz Island ("The Rock") and the graceful single span of the new bridge across the Golden Gate.

Stepping off the ferry, one expects to find here, by the Golden Gate, a different city — and he is not to be disappointed.

Traveling aboard the air-conditioned EXPOSITION FLYER via the Burlington Route, Denver & Rio Grande Western, and Western Pacific railroads, passengers arrive in San Francisco thrilled and rested — ready for business in this great Pacific Coast metropolis or to enjoy to the utmost the marvelous array of entertainment that California, plus the Golden Gate International Exposition, has to offer.



Chicago, second city of the nation, is the Exposition Flyer's eastern terminus

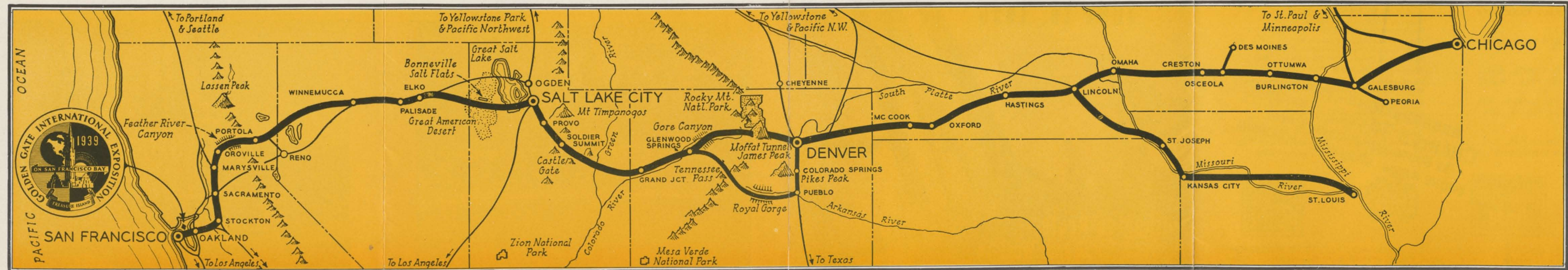


The Mississippi River, separating Illinois and Iowa, is crossed at Burlington

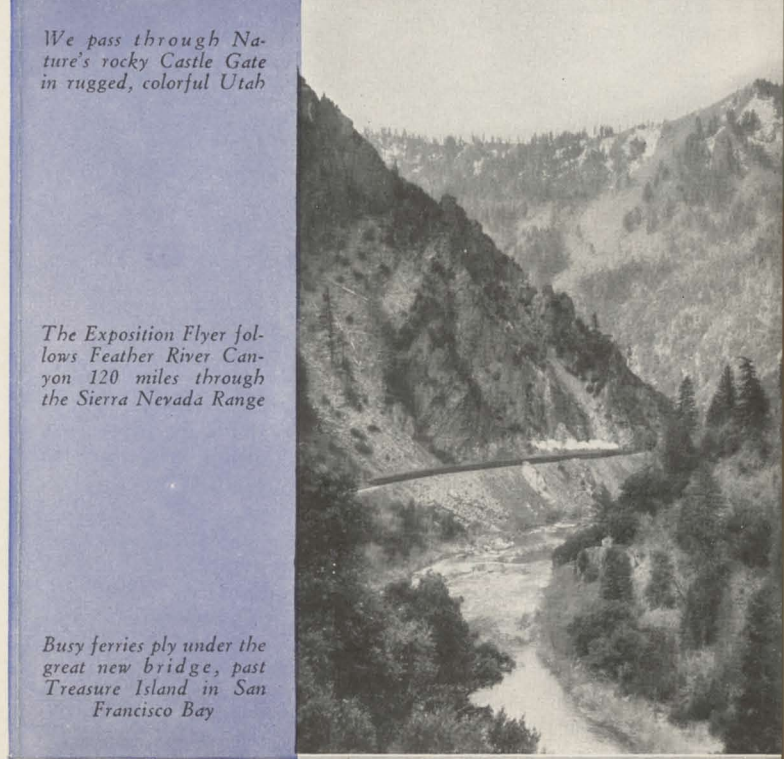


Moffat Tunnel bores six miles under James Peak and the Continental Divide near Denver

The Exposition Flyer runs through the Colorado River's colorful canyons and the Rockies by daylight



We pass through Nature's rocky Castle Gate in rugged, colorful Utah



The Exposition Flyer follows Feather River Canyon 120 miles through the Sierra Nevada Range

Busy ferries ply under the great new bridge, past Treasure Island in San Francisco Bay

