

CHICAGO • SAN FRANCISCO

THE VISTA-DOME

California Zephyr



BURLINGTON • RIO GRANDE
WESTERN PACIFIC

CHICAGO • SAN FRANCISCO

THE VISTA-DOME

California Zephyr



BURLINGTON • RIO GRANDE
WESTERN PACIFIC



The most talked-about train in the country!



Wherever smart travelers meet, you hear enthusiastic comments about the California Zephyr—the only streamliner between Chicago and San Francisco with *five* Vista-Domes.

Many mention the Zephyr's streamlined beauty . . . the luxury of its appointments . . . the expert service of friendly, hand-picked crews. Often they praise the colorful dining cars and their distinctive cuisine . . . the congenial atmosphere of the club-lounge cars.

But *everyone* who has ridden this famous train always talks about the fabulous scenery along its route and about the five glass-enclosed Vista-Domes which were designed to take full advantage of this wonderfully scenic route.

So this booklet can only suggest the delights awaiting you aboard the California Zephyr. Read it, please, as your introduction to the most talked-about train in the country . . . your invitation to ride the California Zephyr—soon!



A train designed and scheduled for sightseeing!

Westbound or eastbound . . . you enjoy Vista-Dome views of the Colorado Rockies and California's Feather River Canyon during daylight hours!

Designed for sightseeing, the California Zephyr has five Vista-Domes, each seating 24 passengers. Here you ride in air-conditioned comfort, high above the rails as though you were in a glass-enclosed "pent-house". Even seasoned travelers are amazed and thrilled when they first go upstairs and discover what a wonderful difference the Vista-Dome makes to cross-country travel!

The California Zephyr winds up the east slope of the Colorado Rockies and crosses the Continental Divide by way of world-famous Moffat Tunnel.



The California Zephyr crosses "The Father of Waters" at Burlington, Iowa.

Designed for sightseeing.



Seats in the California Zephyr's Vista-Domes are *not* sold . . . are *not* reserved. They are extra seats which chair-coach, as well as Pullman, passengers may use whenever they wish.

And unlike most transcontinental trains, the Vista-Dome California Zephyr has been scheduled so that you enjoy hundreds of miles of spectacular mountain scenery during daylight hours.

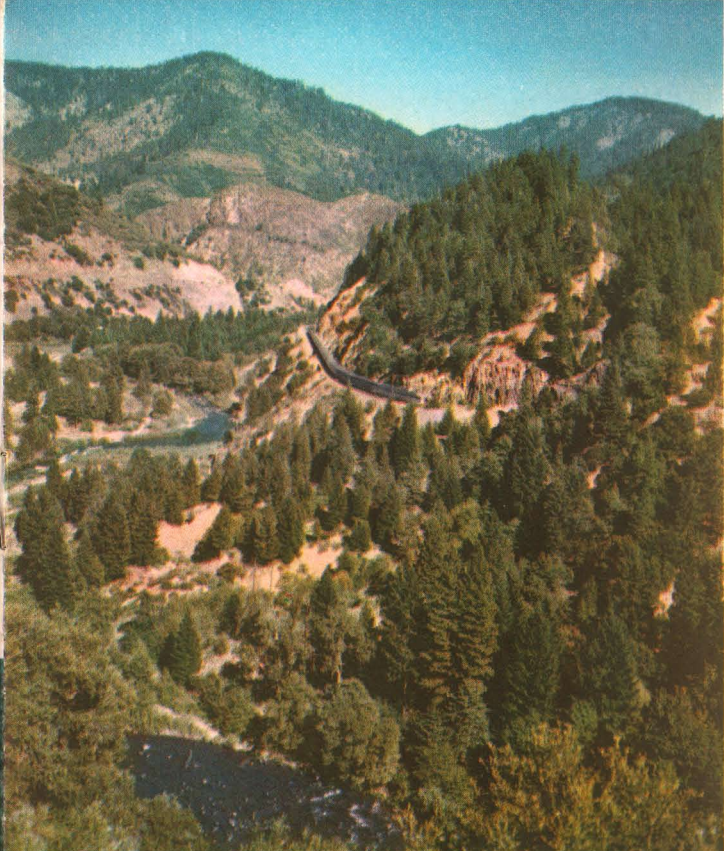
From your vantage point upstairs in one of the Vista-Domes, you will be entranced by the ever-changing panorama, as you wind through the canyons, tunnels and mile-high alpine valleys of the colorful Colorado Rockies . . . as you cross the High Sierra and travel down the 118-mile length of Cali-

fornia's rugged Feather River Canyon . . . as you speed across the fertile Sacramento and San Joaquin Valley to Oakland and San Francisco, "the city by the Golden Gate."

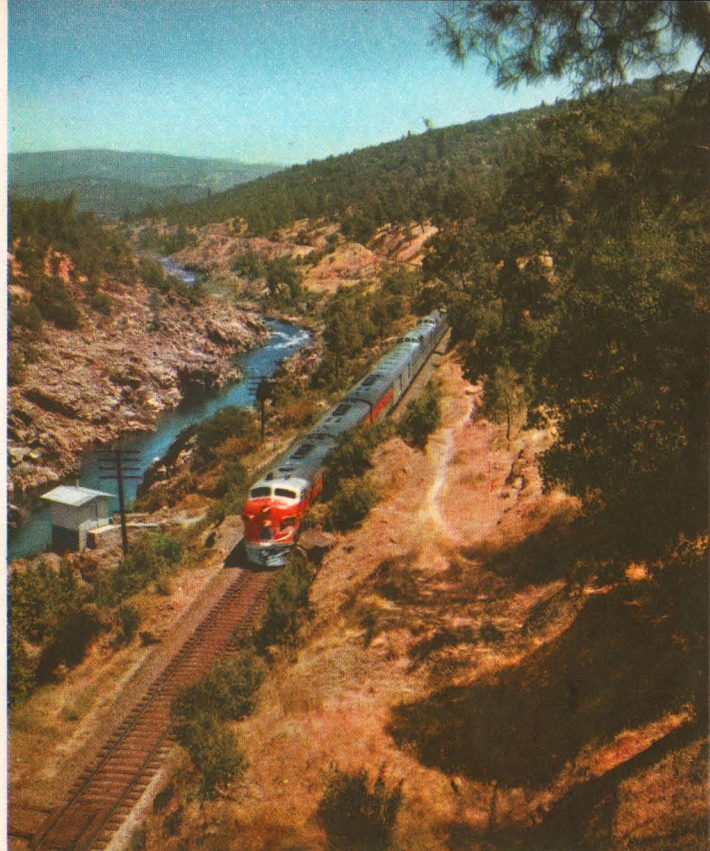
At night, while you're sleeping peacefully in your Pullman berth or deep-cushioned reclining chair car seat, you speed smoothly and swiftly across the farmlands of Iowa and Nebraska . . . across the deserts of Utah and Nevada.

But the fascination of the Vista-Dome does not end with nightfall. After dark, as the California Zephyr glides smoothly and silently across the miles, you will be impressed by the beauty of the moonlit countryside and the passing of trackside signals and distant farmhouses.





California Zephyr glides down the western slope of the Sierra Nevada via Feather River Canyon.



The California Zephyr in the lower reaches of spectacular Feather River Canyon.

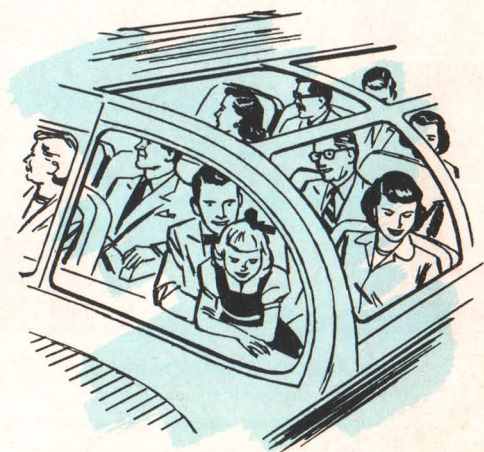
Upstairs in one of the California Zephyr's five Vista-Domes,

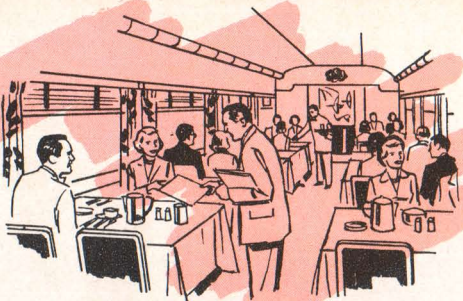
You look up...look down...look all around!

The Vista-Dome provides an entirely new perspective for train travel... opens up new vistas... affords unobstructed panoramic views of the great scenic West.

As the California Zephyr travels the most scenic route between the Great Lakes and the Golden Gate, you look up, look down, look all around. You see majestic, snow-capped mountains... great plains... canyons and cliffs... trees and trails... rushing mountain streams... herds of deer and antelope... vast stretches of virgin forest. It's a great show and upstairs in the Vista-Dome you have the best seat in the house!

If you are a photographer, expert or amateur, be sure to take plenty of film with you, for the Vista-Dome... and this scenic route... offers camera fans many opportunities for the "shot of a lifetime"!





You'll travel in luxurious comfort!



The informal cocktail lounge beneath the Observation Car's Vista-Dome is a delightful rendezvous.



The Dining Car is notable for its colorful decor and the variety of delicacies offered on the menus. You can even order a five-course Italian Dinner, including the traditional bottle of red wine!

The moment you step aboard the Vista-Dome California Zephyr, you sense that comfort and luxury await you—you immediately recognize that this is indeed an outstanding train. There is a congenial, hospitable atmosphere that bespeaks friendliness and companionship. You will surely be impressed by the sparkling beauty of the interiors . . . the spacious lounging facilities . . . the restful fluorescent lighting . . . the harmonious blending of colors. The fresh carnations on the dining car tables, the absence of vibration and noise and the many, many other features are all a part of the planning to add to your sense of well-being and to the pleasure of your trip across the country.

You soon will discover that the service on the California Zephyr is exceptionally courteous and efficient. There is a reason for this: those who serve you aboard the Vista-Dome California Zephyr are so proud of their beautiful streamliner that they go out of their way to make certain you have an enjoyable, comfortable trip.

The Buffet Lounge—a convivial gathering place for both chair coach and Pullman passengers. Sandwiches, coffee and refreshing beverages are served.





The main floor of the Vista-Dome Observation Car (reserved for Pullman passengers) offers deeply-cushioned occasional chairs and settees.

A luxury train in every respect!

But NO extra fare!

Aboard the California Zephyr you enjoy extra comfort and extra pleasure—without extra fare!

As you stroll through the train you discover new beauty, convenience and comfort—restful and relaxing occasional chairs and settees, snow-white linen, sparkling silver, wall-to-wall carpeting and harmonious interior decorations.

Modern Pullman cars offer a wide choice of accommodations: drawing rooms, compartments, double bedrooms (single or en suite), roomettes or standard berths. Each room has a private lavatory, electrically refrigerated drinking water, individual

temperature control and a panel with controls for radio programs, recorded music and special announcements. Pullman passengers have the exclusive use of the Vista-Domes atop the Buffet Lounge and Observation Lounge Cars.

In the chair coaches, you also will find many new conveniences. In addition to the Vista-Dome atop each car, you will have the comfort of deep-cushioned, reclining chairs with folding arm rests and adjustable leg and foot rests. Other features are fluorescent lighting, spacious dressing rooms and mist-proof full-vision windows.



Whether you travel for business or pleasure...

The California Zephyr highlights your trip!

Traveling aboard the California Zephyr is much more than "just another train trip". It is an exciting two-day vacation in itself, one you will long remember.

Westbound, the California Zephyr departs from Chicago in mid-afternoon, crosses the Mississippi in early evening and arrives at mile-high Denver about breakfast-time next morning.

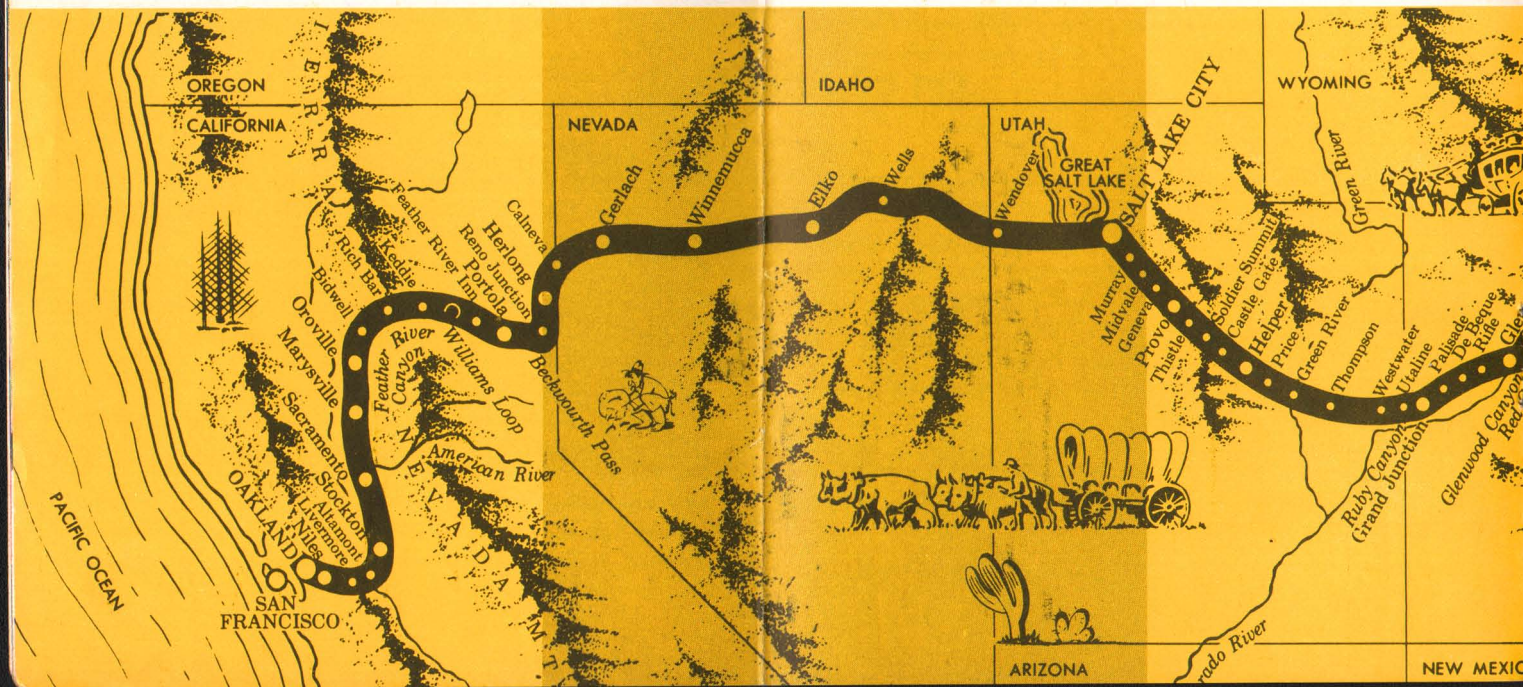
From Denver, it climbs the front range of the mighty Colorado Rockies (4,000 feet up in fifty miles), penetrates the Continental Divide through the 6.2-mile Moffat Tunnel and then, for over 200 fascinating miles, winds through vast stretches of evergreen forest and the rock-walled canyons of the Colorado River.

Byers, Gore and Red Canyons present a succession of spectacular close-ups and sweeping vistas of towering cliffs, deep gorges and rushing streams, amid the most magnificent mountain scenery in the country. And then, the most wonderful of all Colo-

rado River chasms . . . 18-mile Glenwood Canyon . . . whose beauty inspired the revolutionary idea of the Vista-Dome.

Near the western border of Colorado, the picturesque upper canyons broaden into Grand Valley, famed for its ranches and peach orchards. In brilliant Ruby Canyon, the California Zephyr enters Utah, turning westward to cross the Wasatch plateau at Soldier Summit; then glides down into Great Salt Lake valley, reaching Salt Lake City in late evening.

Next morning, shortly after the train enters California, it crosses the Sierra Nevada at Beckwourth Pass. Then, for 118 marvelous miles, the route follows the twists and turns of the turbulent Feather River—at times at river's edge, then hundreds of feet above the bottom of the gorge. The rugged sides of the canyon are densely covered with pine and spruce; in the distance are the slopes and peaks of the majestic Sierra Nevada; now and then a tun-



nel which opens up new vistas; here and there historic sites of the forty-niners' gold strikes.

And, as you marvel at the grandeur of this scenic route, you will be glad you are aboard the California Zephyr . . . the train designed *and* scheduled for sightseeing!

The western terminus of the California Zephyr is the city of Oakland, on the shore of San Francisco Bay. Here, passengers detrain for the exciting ferry-boat ride of three and a half miles across the Bay to San Francisco, "the city loved around the world". This gay, sophisticated metropolis offers visitors an endless variety of attractions, including Chinatown, the fascinating cable cars, marvelous restaurants, fine hotels and wonderful vistas of the Bay and its bridges from the tops of its famed hills.

And, within a short distance of San Francisco, you can visit the redwood groves, beautiful Monterey Peninsula, the Gold Country, great universities and the vineyards of northern California.

Eastbound, the California Zephyr leaves San Francisco in the morning, traverses Feather River Canyon before nightfall, and next day reveals the beauties and wonders of the majestic Colorado Rockies. The final morning of your trip is featured by the crossing of the Mississippi River, with early afternoon arrival at Chicago, metropolis of the midwest on the shores of Lake Michigan. In both directions, the schedule is purposely arranged to show you *all* of the scenic route across America.

MILES FROM CHICAGO	DAY FOR EXAMPLE	WEST- BOUND (READ DOWN)	DAILY SCHEDULE	EAST- BOUND (READ UP)	DAY FOR EXAMPLE	MILES ELEVATION FROM SAN FRANCISCO
--------------------------	-----------------------	-------------------------------	----------------	-----------------------------	-----------------------	---

BURLINGTON - RIO GRANDE - WESTERN PACIFIC

0	Su.	3:30 PM	Lv. . . CHICAGO (CST)	Ar.	1:00 PM	Tu.	595	2537
501	Su.	11:55 PM	Lv. . . OMAHA	Ar.	4:45 AM	Tu.	1040	2036
556	Mo.	1:19 AM	Lv. . . LINCOLN	Ar.	3:35 AM	Tu.	1150	1981
1039	Mo.	8:20 AM	Ar. . . DENVER (MST)	Lv.	7:15 PM	Mo.	5280	1498
1039	Mo.	8:40 AM	Lv. . . DENVER (MST)	Ar.	7:00 PM	Mo.	5280	1498

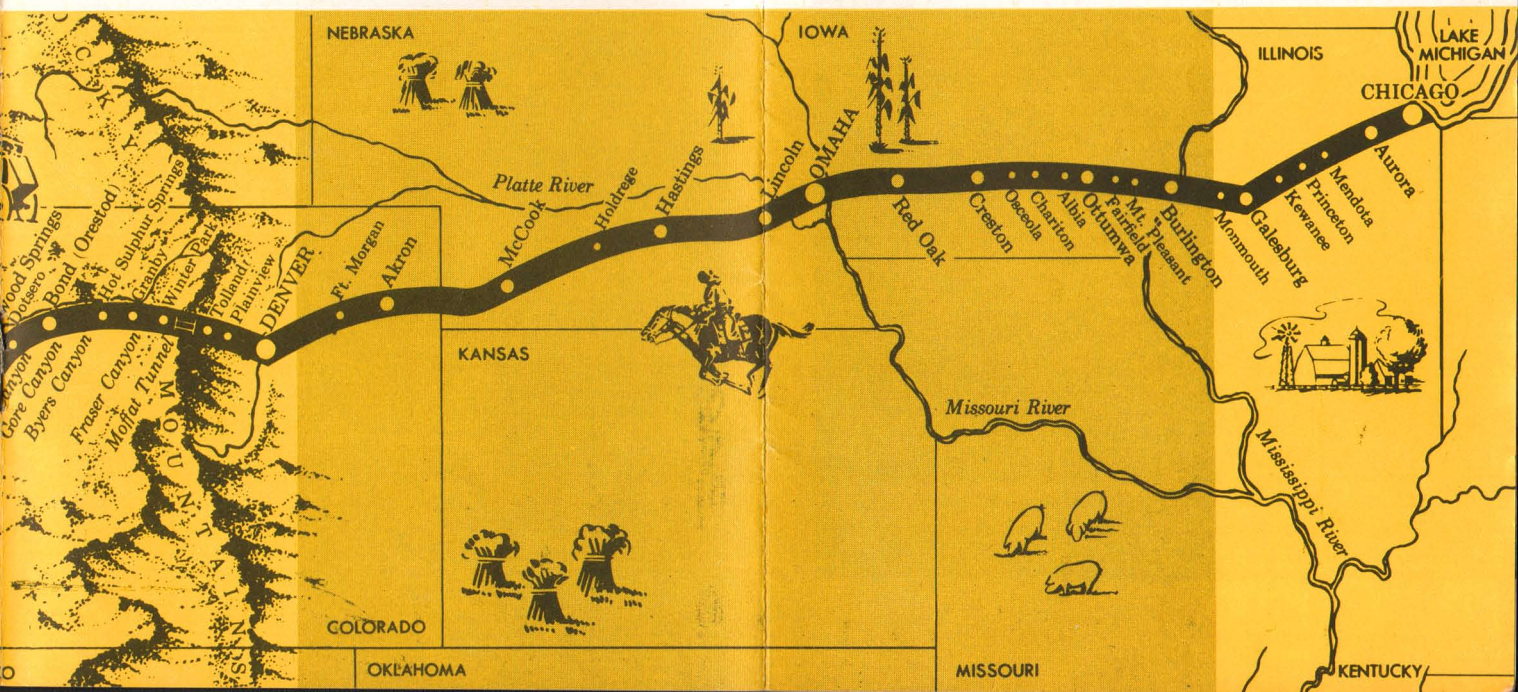
Colorado Rockies via Moffat Tunnel

1224	Mo.	2:00 PM	Ar. . . GLENWOOD SPRINGS	Lv.	1:40 PM	Mo.	5745	1313
1313	Mo.	3:40 PM	Ar. . . GRAND JUNCTION . . .	Lv.	11:51 AM	Mo.	4573	1224
1609	Mo.	10:00 PM	Ar. . . SALT LAKE CITY (MST) .	Lv.	6:00 AM	Mo.	4390	928
1609	Mo.	10:15 PM	Lv. . . SALT LAKE CITY (MST) .	Ar.	5:40 AM	Mo.	4390	928
2216	Tu.	7:10 AM	Ar. . . PORTOLA (PST)	Ar.	5:40 PM	Su.	4834	321

Feather River Canyon

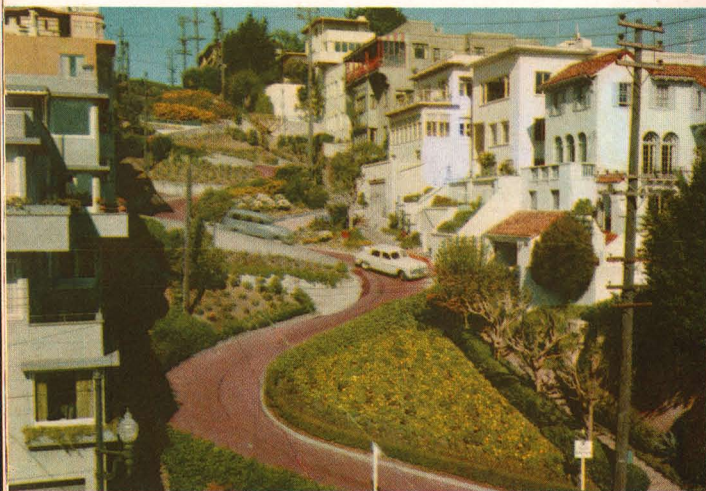
2332	Tu.	10:24 AM	Ar. . . OROVILLE	Lv.	2:25 PM	Su.	205	205
2398	Tu.	11:40 AM	Ar. . . SACRAMENTO	Lv.	1:10 PM	Su.	23	139
2443	Tu.	12:37 PM	Ar. . . STOCKTON	Lv.	12:10 PM	Su.	30	94
2507	Tu.	2:05 PM	Ar. . . FREMONT (NILES)	Lv.	10:47 AM	Su.	85	30
2530	Tu.	2:50 PM	Ar. . . OAKLAND 3rd & Wash. Lv.	Ar.	10:07 AM	Su.	25	7
2533	Tu.	3:10 PM	Ar. . . OAKLAND PIER	Lv.	9:55 AM	Su.	14	4
2537	Tu.	3:45 PM	Ar. . . SAN FRANCISCO (PST) Lv.	Ar.	9:25 AM	Su.	65	0

(Through Pullman . . . 10 roomettes; 6 double bedrooms . . . daily between New York and San Francisco . . . Car CZ 11)





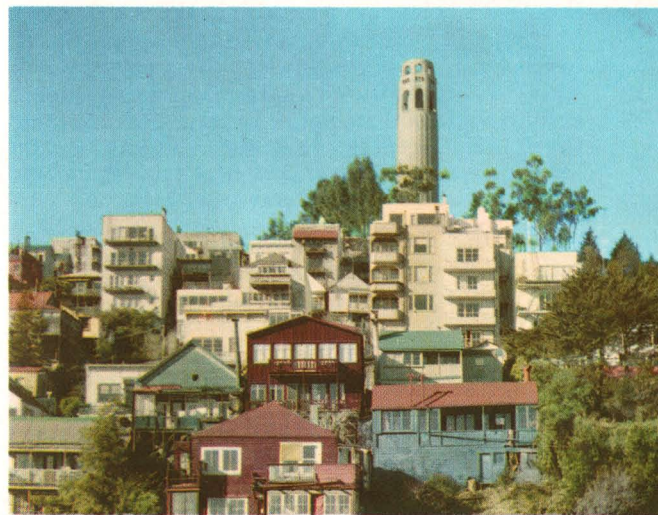
Two of the reasons visitors love San Francisco: the enchanting little cable cars and Chinatown, a fascinating Asiatic city with picturesque restaurants and shops filled with treasures from the Orient.



Visiting San Francisco, you travel, often by cable car, from one hill to another, each one offering a spectacular view of the dazzling white city, the broad sweep of the Bay, the great bridges or the blue Pacific.

The fabulous city of

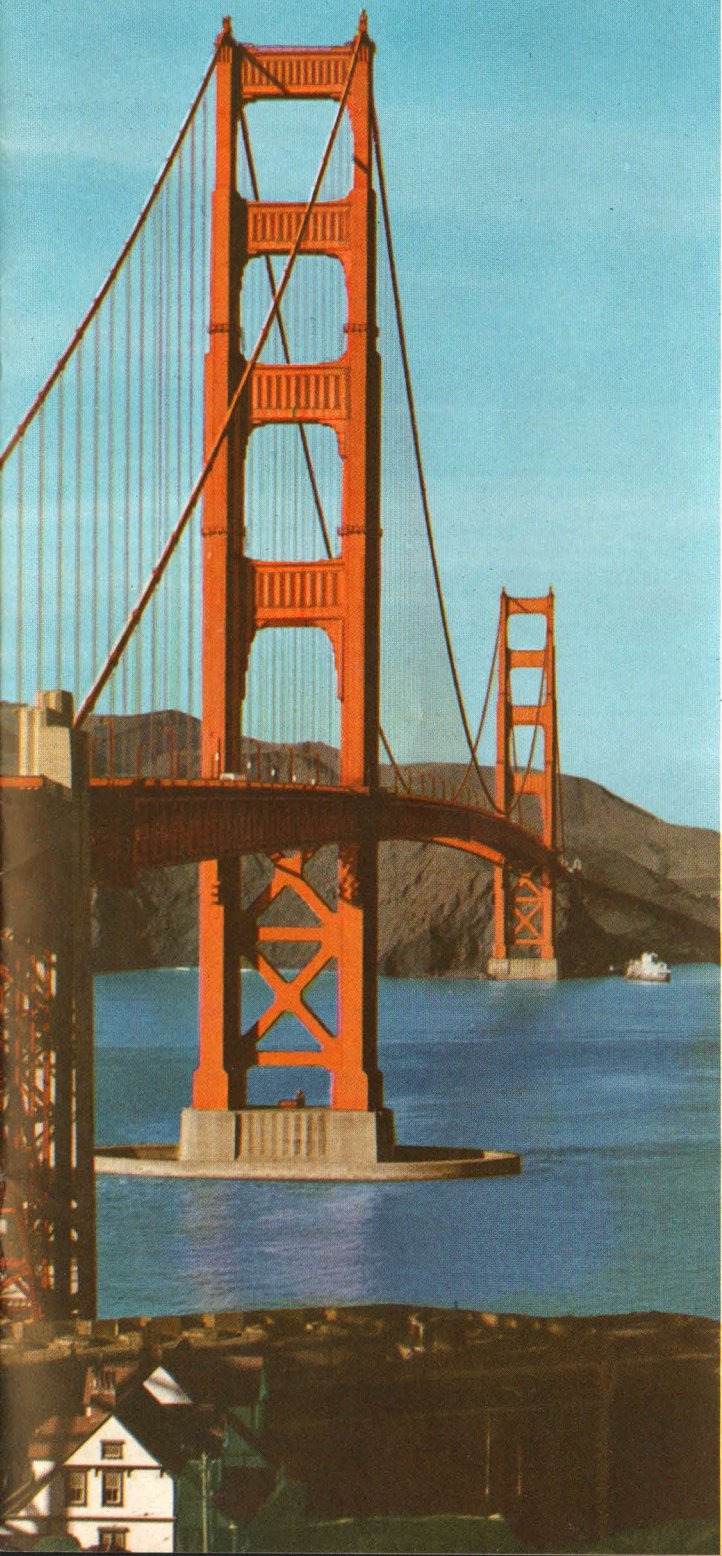
San Francisco



From the top of Coit Tower on Telegraph Hill (one of San Francisco's fourteen hills!), you get a dramatic view of both bridges, the Berkeley-Oakland Hills to the East, the Pacific Ocean to the West and all of San Francisco.



San Francisco is famous for its many wonderful restaurants. And some of the best are to be found on Fisherman's Wharf, where you can look out at the fishing fleet as you enjoy fresh crab, abalone and other delicacies from the Pacific.

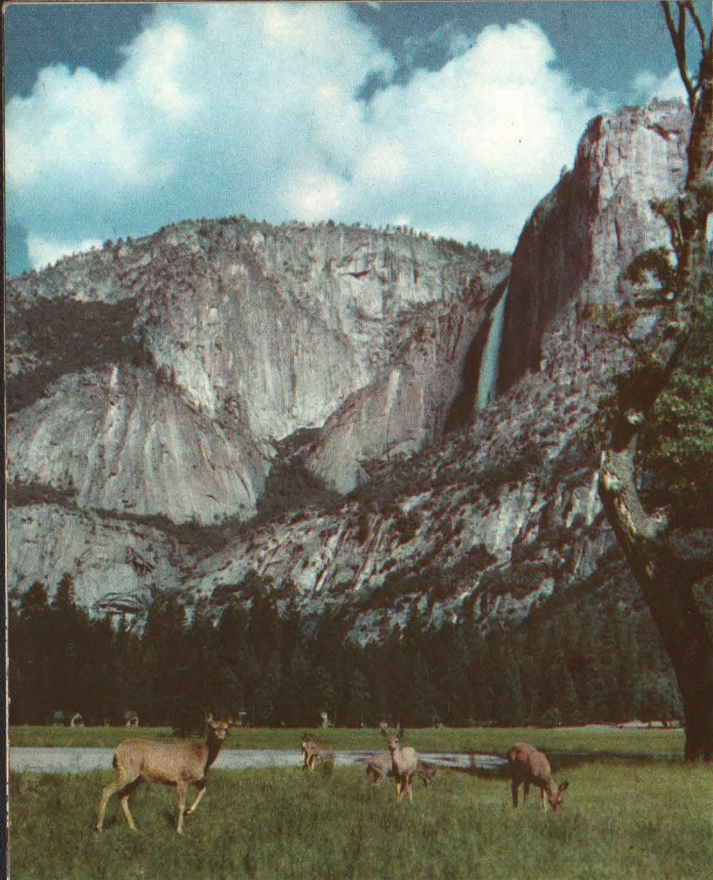


...the heart of a great

vacation area

A few hours north of San Francisco's famed Golden Gate Bridge (shown at left), you come to the Redwood Empire, great forests of giant redwoods, the oldest living things on the face of the earth. And on your way, you'll drive through lovely valleys, their slopes covered with vineyards, groves of oak and fruit orchards.



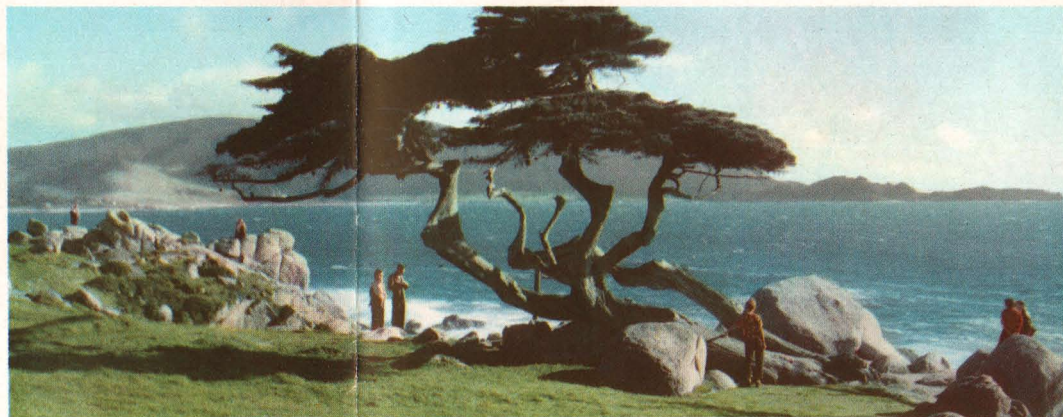


Yosemite National Park

**...just a few hours
from San Francisco**

Yosemite National Park, southeast of San Francisco, is in the very heart of the mighty High Sierra. Here you will marvel at Yosemite Falls with its sheer drop of 2425 feet, will hike along the trails which wind through the lovely Valley, will take motor tours to the many places of interest and great natural beauty within the Park's 1189 square miles.

Monterey Peninsula ...the Riviera of North America



South from San Francisco, you travel through the lush Santa Clara Valley, cross the Santa Cruz Mountains and arrive at the shores of Monterey Bay. This is the land of the wind-

swept Monterey cypress, lovely and unspoiled "Seventeen Mile Drive," picturesque Carmel and golf courses so close to the Pacific that the ocean is a water hazard!



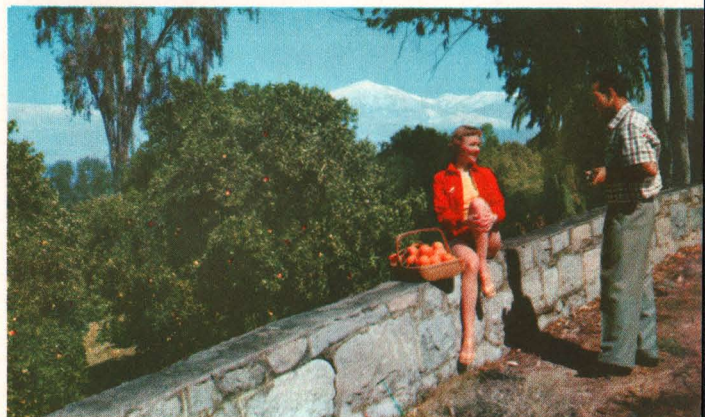
Glamorous, sun-kissed

Southern California

NOTE: When you travel to San Francisco aboard the California Zephyr, you can include a trip to Southern California (via Monterey Peninsula or Yosemite, if you wish) without paying additional rail fare. (Eastbound, you can go via San Francisco without additional rail fare.)



A premiere at world-famous Grauman's Chinese Theatre on glamorous Hollywood Boulevard is typical of the many exciting events you can attend during your visit to Southern California.



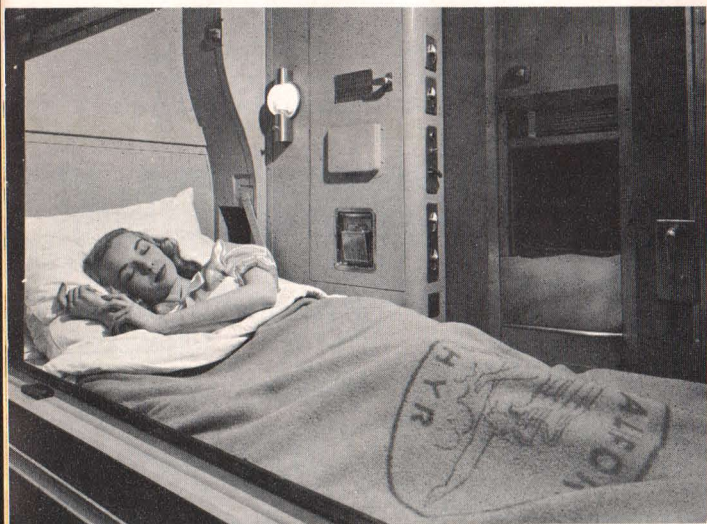
The snow-capped peaks of the San Gabriel Range overlook sun-drenched orange groves. Where but in Southern California can you go swimming in the morning and be skiing the afternoon of the same day!



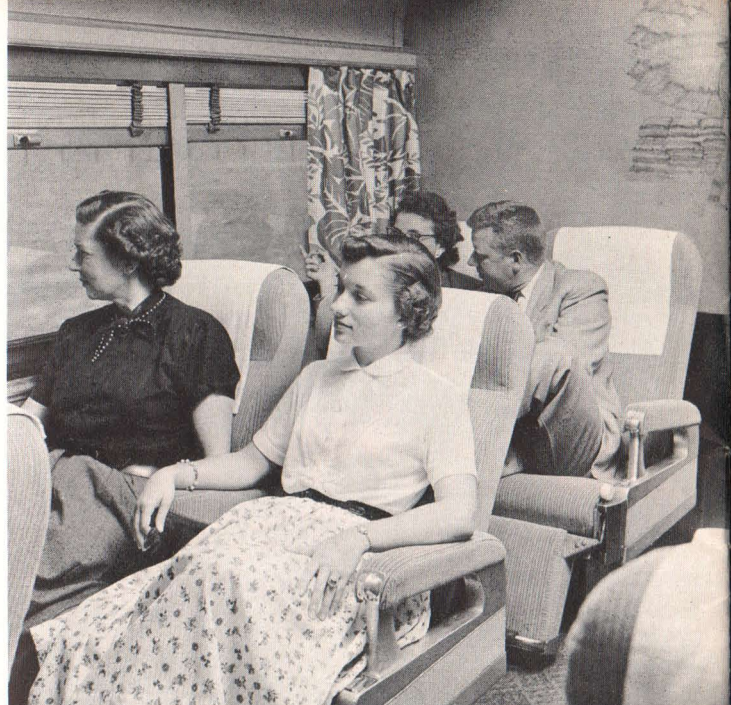
Room to roam!

There is room to roam aboard the California Zephyr! Yes, *extra* room has been provided throughout the train for the convenience and comfort of the passengers — so you never will feel crowded in this popular transcontinental train. In addition to the 120 unreserved seats in the five Vista-Domes, there is extra room in the buffet-lounge and observation-lounge cars.

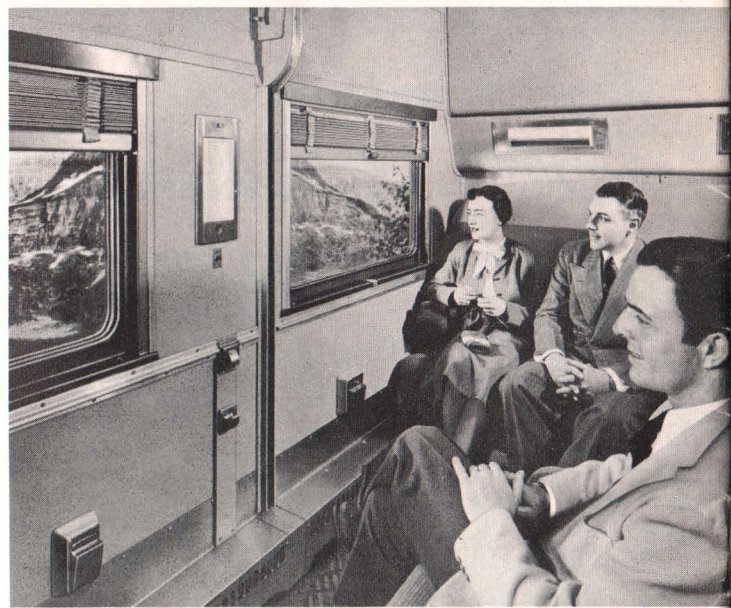
Another feature that eliminates crowding is the system of evening dinner reservations. The Zephyrette, the train's official hostess, reserves space in advance for all passengers, and the steward notifies them over the public address system when their reservations are ready. There is no tiresome waiting in line outside the diner.



A roomette . . . an economical private room for the individual traveler. New-design, pre-made bed can be lowered or raised without opening door.



Spacious reserved seat chair coaches are divided into two sections by commodious dressing and rest-rooms located beneath the Vista-Dome.



Connecting double-bedrooms provide berths for four, a spacious "living room" during the day, and two enclosed lavatories.



**Now...the California Zephyr
invites you to**

*The travel experience
of a lifetime!*

If you're planning a trip to or from California . . . this is *your* opportunity to discover the *extra* pleasures of California Zephyr travel.

There is so much to see . . . so much to do . . . aboard the California Zephyr that many passengers have made the trip again and again . . . Everybody has such a good time! It is either a highlight of a vacation trip or an exceptionally relaxing and interesting interlude in a business trip.

You're invited to travel aboard the most talked-about train in the country. We hope you'll accept that invitation—soon!

Be sure to bring along your camera!

*(there's nothing like a Vista-Dome
for dramatic photography)*

The glass in the California Zephyr's Vista-Domes has been tinted to cut down on the sun's glare.

Professional photographers recommend that, in addition to the filter instructions contained in each package of color film, a color compensating filter such as Kodak No. CC30-R also be used to obtain better results.

Certain adjustments in camera stops, as shown below, are also found to be helpful:

Method of Exposure Determination		Exposure Increase in Camera Stops		
		Color Film plus Kodak CC30-R filter	Color Film no filter	Black-and- White Film no filter
Exposure Meter	Top Windows	$\frac{2}{3}$ stop	none	none
	Side Windows	$\frac{2}{3}$ stop	none	none
Exposure Tables or Guides	Top Windows	2 stops	$1\frac{1}{2}$ stops	1 stop
	Side Windows	$1\frac{1}{2}$ stops	1 stop	1 stop

California Zephyr Movies—Motion pictures of a California Zephyr trip between Chicago and San Francisco are available in black and white, 8 m.m. silent and 16 m.m. sound. For complete information write Black Hawk Films, Inc., Davenport, Iowa.
(Note: Neither film nor filters are on sale aboard the train.)

Through Pullman car daily between New York and San Francisco



BURLINGTON

J. J. Alms
General Passenger Traffic Manager
Chicago, Illinois



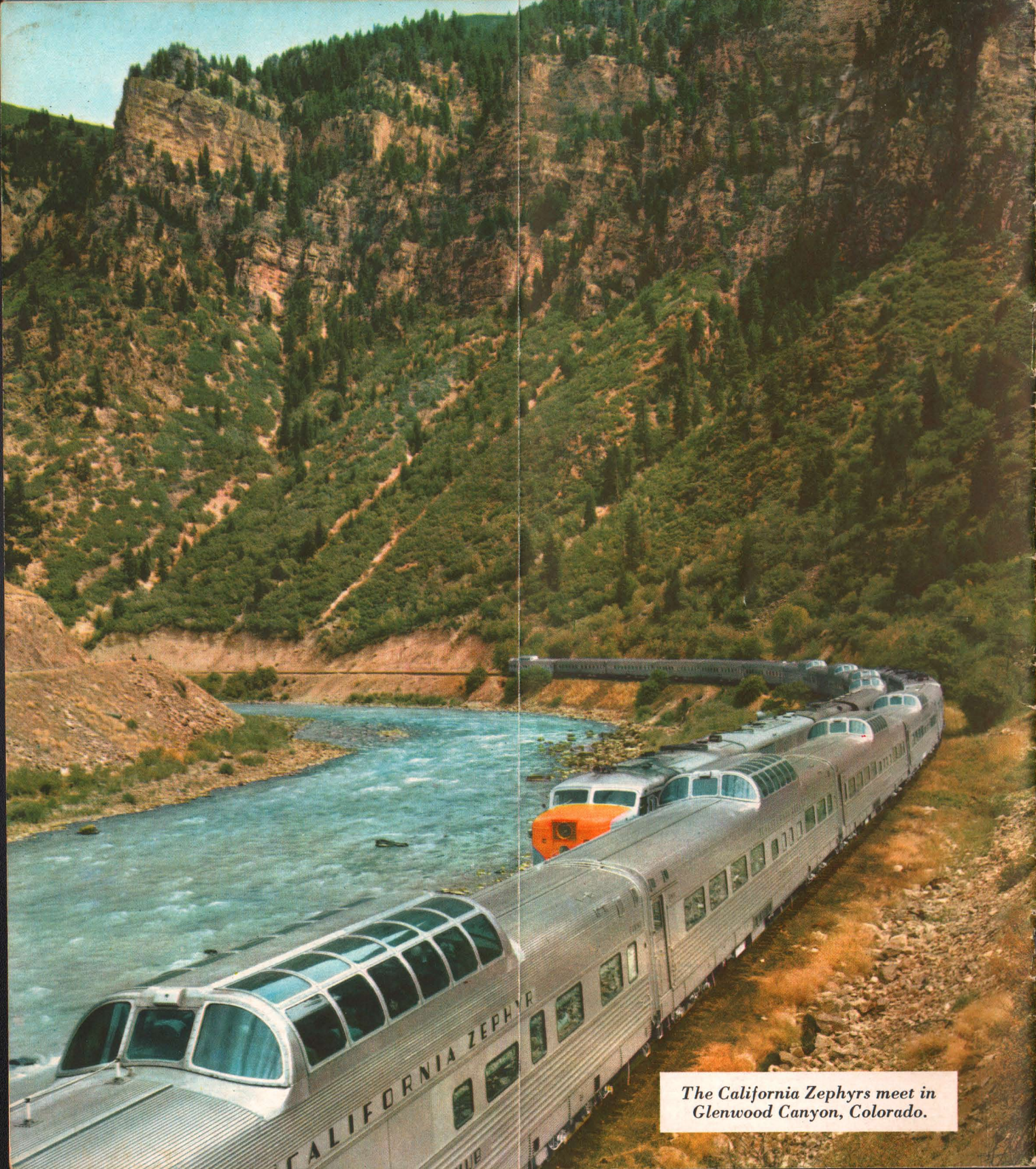
RIO GRANDE

H. F. Eno
Passenger Traffic Manager
Denver, Colorado



WESTERN PACIFIC

James J. Hickey
Passenger Traffic Manager
San Francisco, Calif.



*The California Zephyrs meet in
Glenwood Canyon, Colorado.*