

SEE

CANADA

GO

Canadian Pacific

GO

Canadian Pacific

SEE

CANADA



Take a Real Holiday

Take the Train



Montreal is host to thousands of visitors year round. French and English cultures mix in this great city offering tourists a delightfully different atmosphere.



Toronto, capital of the Province of Ontario and site of the 1600-room Royal York Hotel, Canada's foremost convention centre.

Ottawa, capital of Canada, diplomatic hub, and centre of government. The Peace Tower dominates the Parliament buildings.



Take a real holiday—take a rail holiday! Let the train crew watch the road—while you watch the scenery—or dine in comfort in a rolling restaurant—join congenial companions in the unique decor of a Canadian Pacific Mural Lounge, your hands free from the wheel, your feet free from brakes and throttle. Relax—in complete travel freedom, the freedom of an air-conditioned, scenic-dome transcontinental streamliner.

Canada — from sea to sea — calls you to enjoyment. Canadian Pacific offers you two famous transcontinental trains—“The Canadian”, and during summer months, “The Dominion”— between Montreal and Vancouver, between Toronto and Vancouver.

Canada calls you to the longest scenic-dome ride in the world. Canadian Pacific offers you the distinctive Canadian sights, sounds and scenes of Central, Eastern and Western Canada—the bilingual welcome of Quebec—the “down east” flavour of the Atlantic Provinces. Canadian Pacific serves the nation’s major cities with crack passenger trains, great hotels and motor hotels—offers holiday-makers incomparable summer resorts.



Rushing blue waters and the sylvan background of wooded forests provide an ideal setting for fishing in Ontario's French River.



Ottawa, showing the Rideau Canal, Confederation Square, and Parliament Buildings.

Katy's Cove, private beach of The Algonquin, Canadian Pacific summer resort at St. Andrews by-the-Sea, New Brunswick.



SEE

CANADA

Canada, to Canadians as well as visitors, is a complex, comprehensive area bounded by Atlantic and Pacific oceans, the North West Passage — or The Pole if you prefer — the Great Lakes and the United States.

There are reminders of Great Britain, France, The United States, a dozen Old World cultures — but, over all, Canada is itself — agricultural, mineral, lake-land, hunters' paradise, busily commercial, mountainous, sea-faring, sturdily Canadian.



GO

Canadian Pacific

"The Canadian" winds its way along the shore of the Bow River.



◀ A Canadian Pacific Great Lakes liner in the locks at Sault Ste. Marie. S. S. Assiniboine and S. S. Keewatin offer an alternate Great Lakes summer route between East and West, serving Port McNicoll and Fort William.



Sparkling waterfalls are typical of Canadian holiday spots. Between the St. Lawrence estuary and the Atlantic and the sheltered waters of the British Columbia Coast, there is a variety unexcelled in the temperate zone. Great cities, expanding industry, forests, rivers, prairies, mining country, the Great Lakes, mountains, these are Canada, too . . . the polish of the 20th Century . . . the romance of a historic past.

CANADIAN PACIFIC HOTELS

From Sea to Sea

The Digby Pines . . . Digby, Nova Scotia
 The Algonquin . . . St. Andrews-by-the-Sea, N.B.
 Château Frontenac . . . Quebec City, Quebec
 †Le Château Champlain . . . Montreal, Quebec
 Le Baron Motor Hotel . . . Sherbrooke, Quebec
 The Royal York . . . Toronto, Ontario
 Ascot 27 . . . Rexdale (Toronto), Ontario
 The Royal Alexandra . . . Winnipeg, Manitoba
 The Saskatchewan . . . Regina, Saskatchewan
 The Palliser . . . Calgary, Alberta
 *Chateau Lacombe . . . Edmonton, Alberta
 Timberline Hotel . . . Banff, Alberta
 Banff Springs Hotel . . . Banff, Alberta
 Chateau Lake Louise . . . Lake Louise, Alberta
 The Empress . . . Victoria, British Columbia

*Opening in 1966.

†Opening in 1967.



Whether picnicking in the fresh air under a warm sun, or riding sure-footed mountain ponies in the Canadian Rockies, you'll enjoy a Canadian holiday. There are magnificent playgrounds from coast to coast—fish and game areas abound—and Canadians are a hospitable people. They welcome visitors and enjoy being hosts to guests.



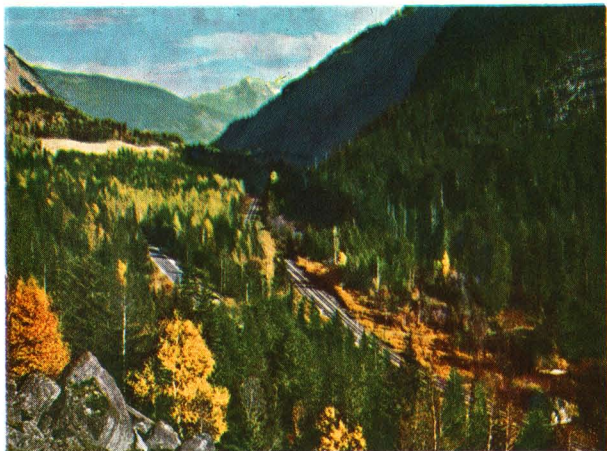


3,000
delightful, friendly
miles...
beautiful sights to see
wonderful things to do...



Beautiful Banff Springs Hotel (left) and Chateau Lake Louise (centre left) Canadian Pacific resort hotels high in the Canadian Rockies, are gems in settings of unsurpassed beauty. Warm sunny days, cool "mountain air" nights—riding, hiking, golfing, swimming, boating and numerous other summer activities, excellent cuisine, personalized service—for guests to enjoy.

Typical of the scenery in the Canadian Rockies, Eagle Pass is but one of many beauty spots across the nation which travellers aboard "The Canadian" and "The Dominion" view through the glareproof glass of scenic-domed transcontinentals.



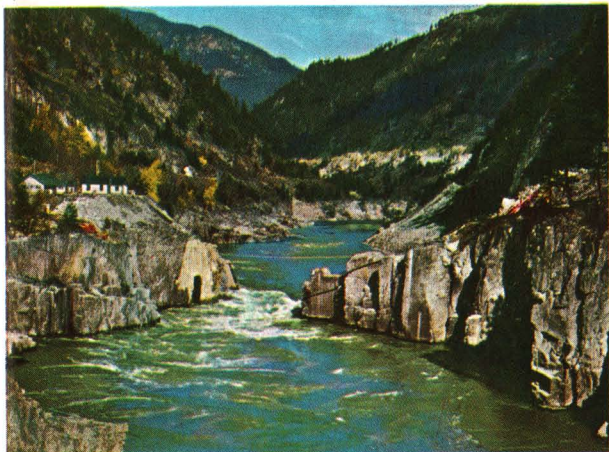
A Rail Holiday Is a Real Holiday



A sightseeing bus in the Banff-Lake Louise area pauses beside the jade green waters of a mountain lake which reflects the towering mountain in its mirror-like surface.

Sure footed bighorn sheep roam the Canadian Rockies, as do deer, moose, elk and other animals that make their home in the valleys and on the slopes of great snow-capped crags. Occasionally a bear—sometimes with her cubs—may be seen in this area.

The Fraser River rushing between the canyon walls through "Hell's Gate".



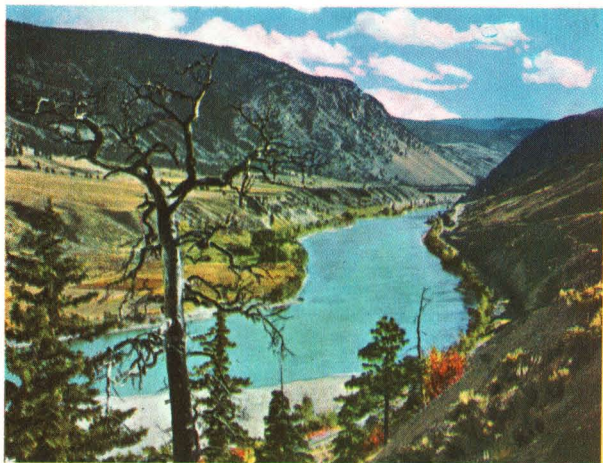
SEE THE CANADIAN ROCKIES

GO *Canadian Pacific*



The majestic Canadian Rockies form an impressive background for "The Canadian"—Canada's only scenic-dome trans-continental streamliner. Diesel powered, the crack streamliner boasts the most modern passenger equipment available—Scenic Dome Lounge Sleepers; Scenic Dome Coffee Shop Coaches; De Luxe Coaches, featuring full-length leg-rests. Sleeping Cars offer a wide range of accommodation to suit your travel budget, and Dining Room Cars feature superb Canadian cuisine. Designed for comfort and travelling ease, "The Canadian" offers Canadian Pacific service—tradition enjoyed by travellers for more than three-quarters of a century.

The mighty Thompson River winds its way majestically near Spence's Bridge in British Columbia.



Mountain Playgrounds



Located at the junction of the Spray and Bow Rivers, Banff Springs Hotel, one of the world's most famous holiday resorts, is on the main transcontinental line of the "The Canadian" and "The Dominion".



Indian Days at Banff, an annual event that delights Western Canadian visitors. Each year the Stoney Creek Indians leave their reservation to attend this mid-summer "pow-wow".



Canadian Pacific

TRANSCONTINENTAL

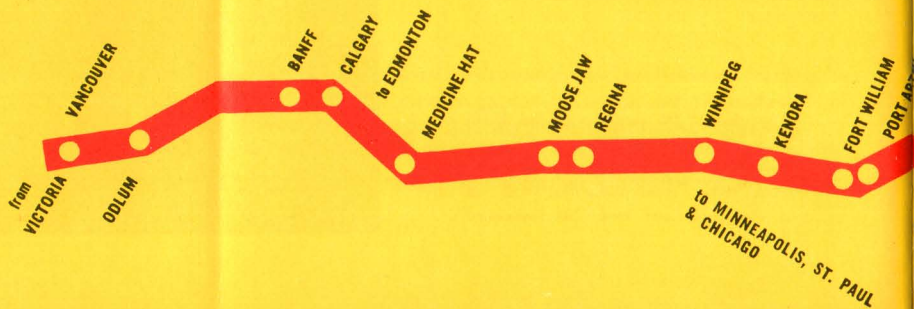
Canada is known for its many beautiful parks and playgrounds that delight young and old alike. Graceful swans are an attraction at Beacon Hill Park, Victoria, B.C.



Daily, each way, between Vancouver - Toronto and Vancouver - Montreal the stainless steel streamliner, "The Canadian" speeds across Canada serving business and holiday travellers with a fast and convenient schedule.

Daily, too, during the summer months, "The Dominion", also equipped with stainless steel and scenic-dome cars, operates on a time-table geared to inter-city travel. Both trains, in addition to dining-room cars have Skyline

Coffee Shop cars. For extra enjoyment Canadian Pacific Great Lakes liners offer a unique water-borne interlude in your transcontinental journey.



Canadian Pacific

OFFERS

Complete Travel Service
Train, Steamship, Airline,
Hotel Reservations
All in one package!

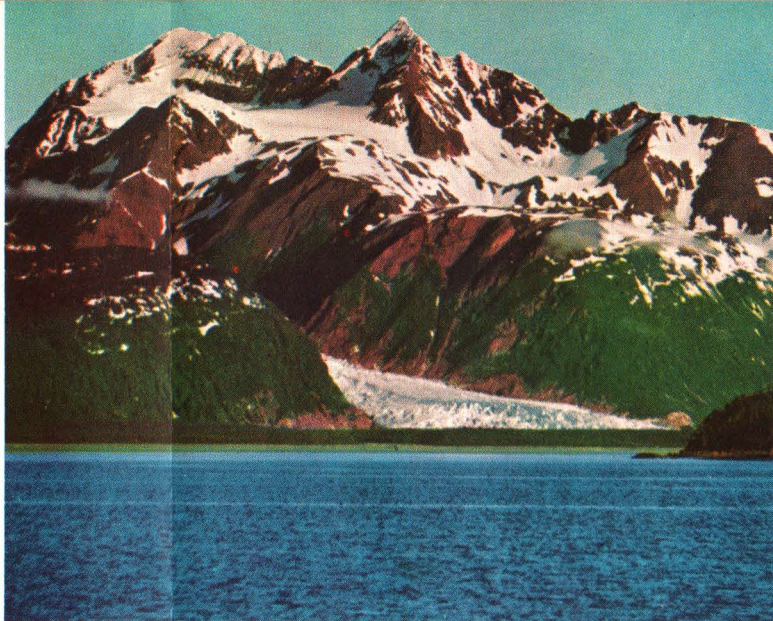
All-inclusive "Faresaver"
rail fares cover tickets,
berths, meals.

Family Plan Rates at
Hotels cover children
under 14 years of age.

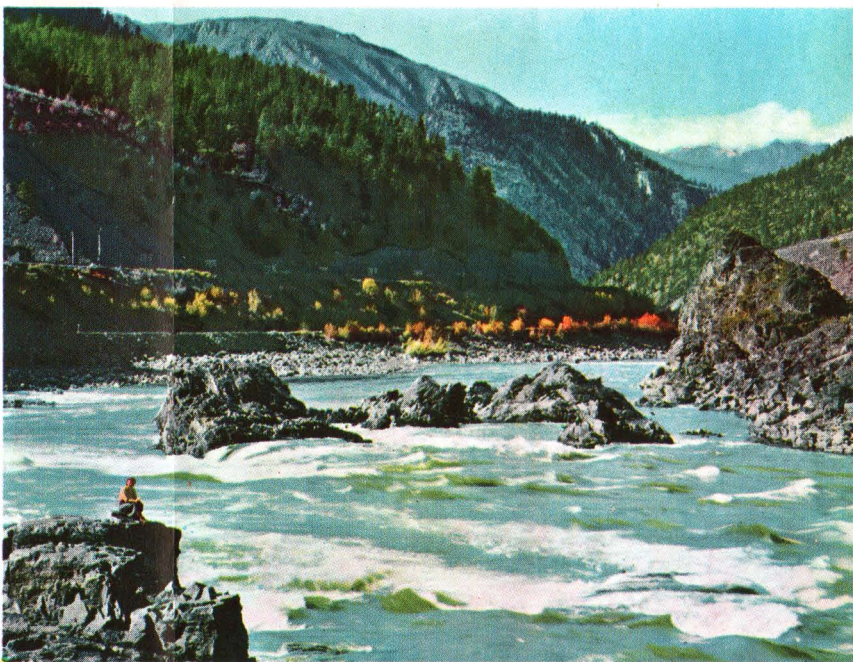
"Reserve-a-Room" Service.

Credit cards covering
Rail, Hotels, Airlines, Steamships,
Telegrams, Car rental.

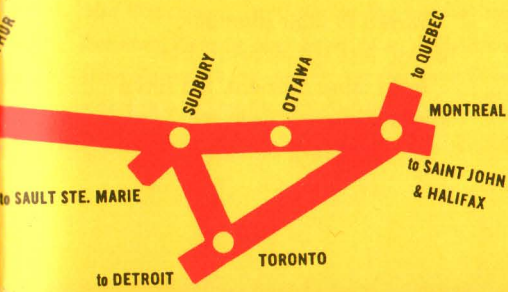
For other money-saving plans,
ask your Travel Agent or any
Canadian Pacific Office.



Steel blue waters of an Alaskan glacier.



Suicide Rapids of the Thompson River in British Columbia.



Typical of the wealth of "things to see" in Canada are the varied photographs on this page—and throughout the booklet. There is so much to see and do—so many things to enjoy in Canada—that no one brochure can do justice to the variety. Before touring Canada, talk over your itinerary with your travel agent, or nearest Canadian Pacific representative.



"The Canadian"—scenic dome streamliner—crossing Stoney Creek Bridge in the Canadian Rockies.



Canada's famous Mounted Police train at Regina, Saskatchewan.

"The Mounties"

Their scarlet jackets and swagger-cut breeches, stiff-brimmed hats and alert, athletic bearing have made The Royal Canadian Mounted Police world-famous figures.

The legends, mostly true, of their part in the opening of the Canadian West have added to their glamour.

Today, less spectacular, but even more efficient, the force plays a major role in the policing of Canada.

Canada's West Coast

Gateway to the Pacific

Vancouver, end of steel for the railway — gateway for Canadian Pacific Airlines. Gateway to Mexico — South America — Honolulu — Fiji — New Zealand — Australia — Japan — Hong Kong — Amsterdam — by Super DC-8 Jet Empresses; gateway, too, for Canada's Evergreen Playground — British Columbia — where the temperate climate promises year-round golf at Victoria, roses at Christmas, fishing, scenery in the Paul Bunyan tradition.



The Empress Hotel, Victoria, B.C., from the rose garden.

A "Princess" liner nears Victoria, B.C. Canadian Pacific's British Columbia Coast Steamships maintain transportation service between Nanaimo and Vancouver...and during the summer months between Victoria and Seattle, as well as cruises from Vancouver to Alaska via the smooth inside passage—Prince Rupert, Ketchikan and Juneau.

CANADIAN PACIFIC RESORTS

In addition to the chain of year-round hotels and motels across Canada from sea to sea, Canadian Pacific operates four major summer resorts—Banff Springs Hotel, Banff, Alberta; Chateau Lake Louise, Lake Louise, Alberta; both high in the Canadian Rockies: The Algonquin at St. Andrews-by-the-Sea, New Brunswick and The Digby Pines, Digby, Nova Scotia. The magnificent Chateau Frontenac, Quebec, open all year, has two distinct holiday seasons—Summer and Winter.

Across the continent The Empress, Victoria, B.C., also doubles as a popular holiday resort—especially in the moderate winter Vancouver Island enjoys.

Your Travel Agent has full particulars and specialized literature of all Canadian Pacific personal travel services. He can make all your travel arrangements for you.





Intimate, companionable, The Mural Lounge—beneath the scenic Dome of the Observation-Lounge Car—is a popular rendezvous. Feature of the lounge is a 20-foot canvas mural of one of 18 Canadian Parks. Etched glass and hand-carved linoleum panels depict flora of the parks. Service is from a gaily decorated bar.

Canadian Pacific Transcontinental Equipment

Comfortable chairs, attractive drapes and Canadian decor, combined with wide windows, feature the Main Lounge of the Observation-Lounge Cars. The all-stainless steel lightweight car is a feature of "The Canadian". Comfort is the keynote, and service the byword.





▲ Duplex Roomettes . . . compact, comfortable, economical, complete privacy, day and night, is provided in the smart Roomettes and Duplex Roomettes. Foam rubber disappearing beds, wide seats, with arm rests, individual washing and toilet facilities, wide windows, temperature and air-conditioning controls and full carpets are outstanding features of these travel apartments.



▲ "Park", "Manor" and "Chateau" cars have bedrooms with disappearing beds, private toilet, moveable chairs—luxury with economy. By night foam-mattressed beds coax you to deep, restful sleep.



▲ Upper and Lower Berths are two-seated and wide-windowed offering passengers a panoramic view of the countryside. At night, berths are zipper-curtained, air conditioned, private and comfortable.

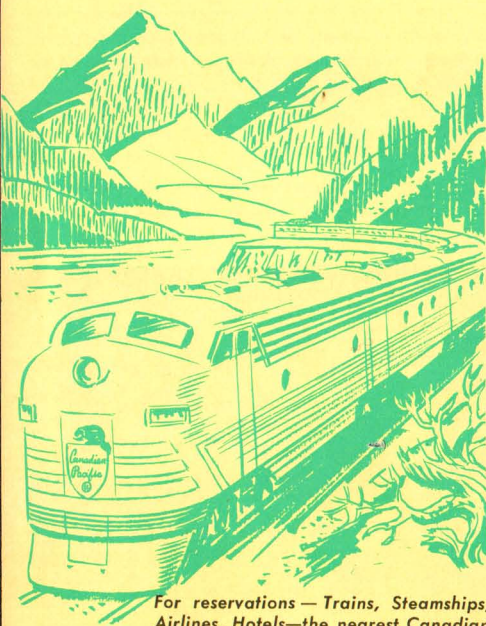
▲ Larger than bedrooms, compartments—equipped with triple-mirror wash-basin—dressing table, extra chairs for entertaining, private toilet add to daytime travel comfort.



See Canada . . .
 at
 eye-level
 from the
 high-level
 Scenic Dome
 an
 exclusive
 feature
 of
 Canadian
 Pacific
 trains
 across
 Canada.



Bedrooms "en suite" . . . ideal for family travel or business conference en route.



For reservations—Trains, Steamships,
 Airlines, Hotels—the nearest Canadian
 Pacific Office. ▶

SAFEGUARD YOUR TRAVEL FUNDS . . .
 CARRY CANADIAN PACIFIC EXPRESS
 TRAVELLERS CHEQUES

Canadian Pacific

TRAINS/TRUCKS/SHIPS/PLANES/HOTELS/TELECOMMUNICATIONS
 WORLD'S MOST COMPLETE TRANSPORTATION SYSTEM

PRINTED
 IN
 CANADA

1965