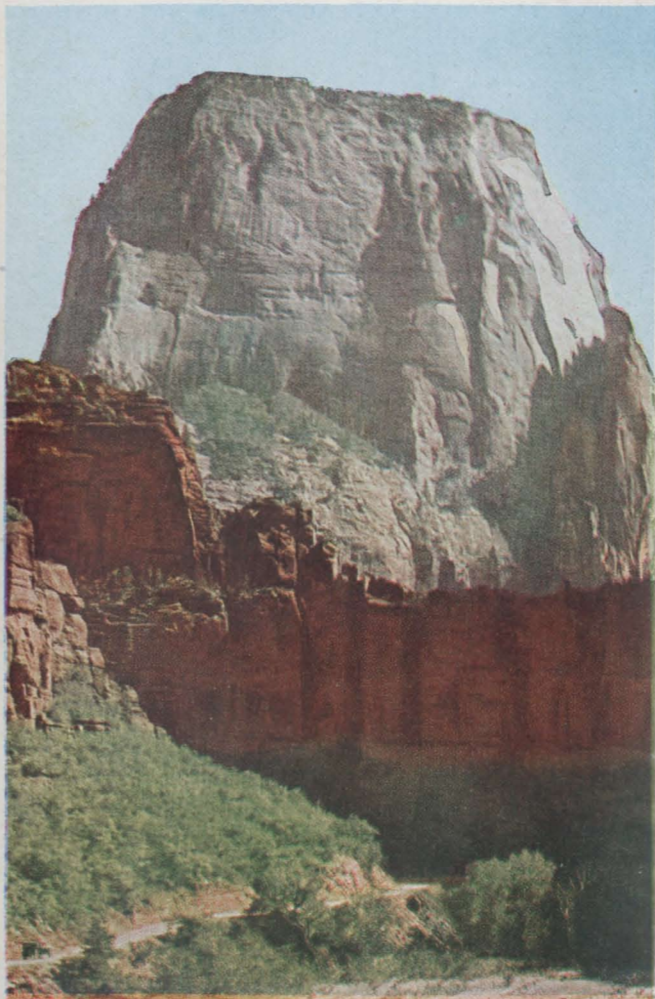


# ZION · BRYCE GRAND CANYON

NATIONAL PARKS

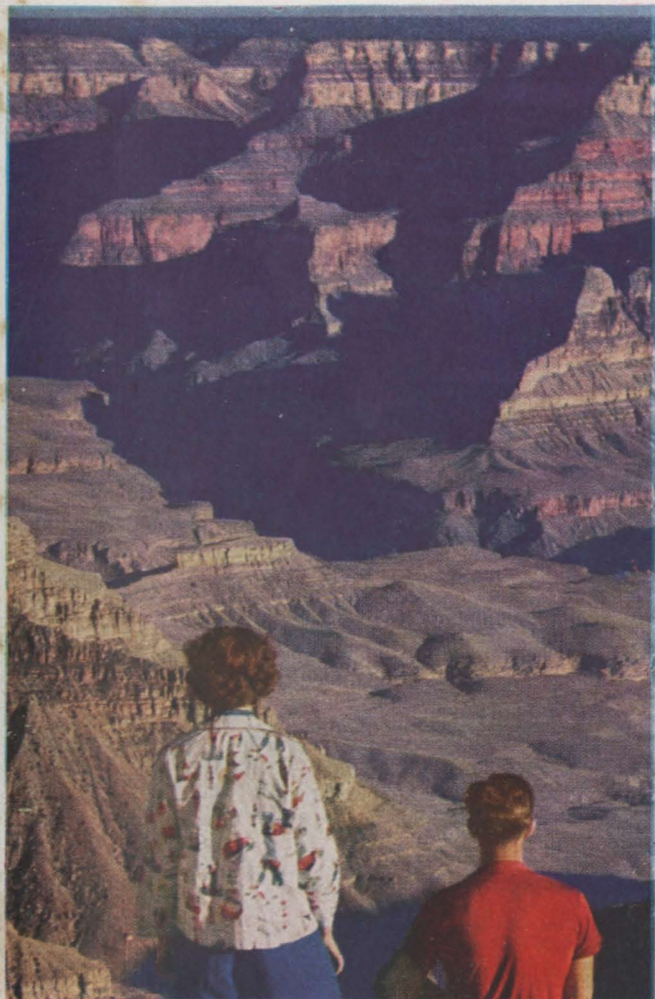
*in Southern Utah · Arizona*



# GRAND CANYON ZION · BRYCE

NATIONAL PARKS

*in Southern Utah · Arizona*



CHICAGO AND NORTH WESTERN SYSTEM

CHICAGO AND NORTH WESTERN SYSTEM



ZION  
BRYCE CANYON  
GRAND CANYON  
NATIONAL PARKS

◆  
CEDAR BREAKS  
NATIONAL MONUMENT

◆  
KAIBAB NAT'L FOREST  
◆

# ZION • BRYCE CANYON

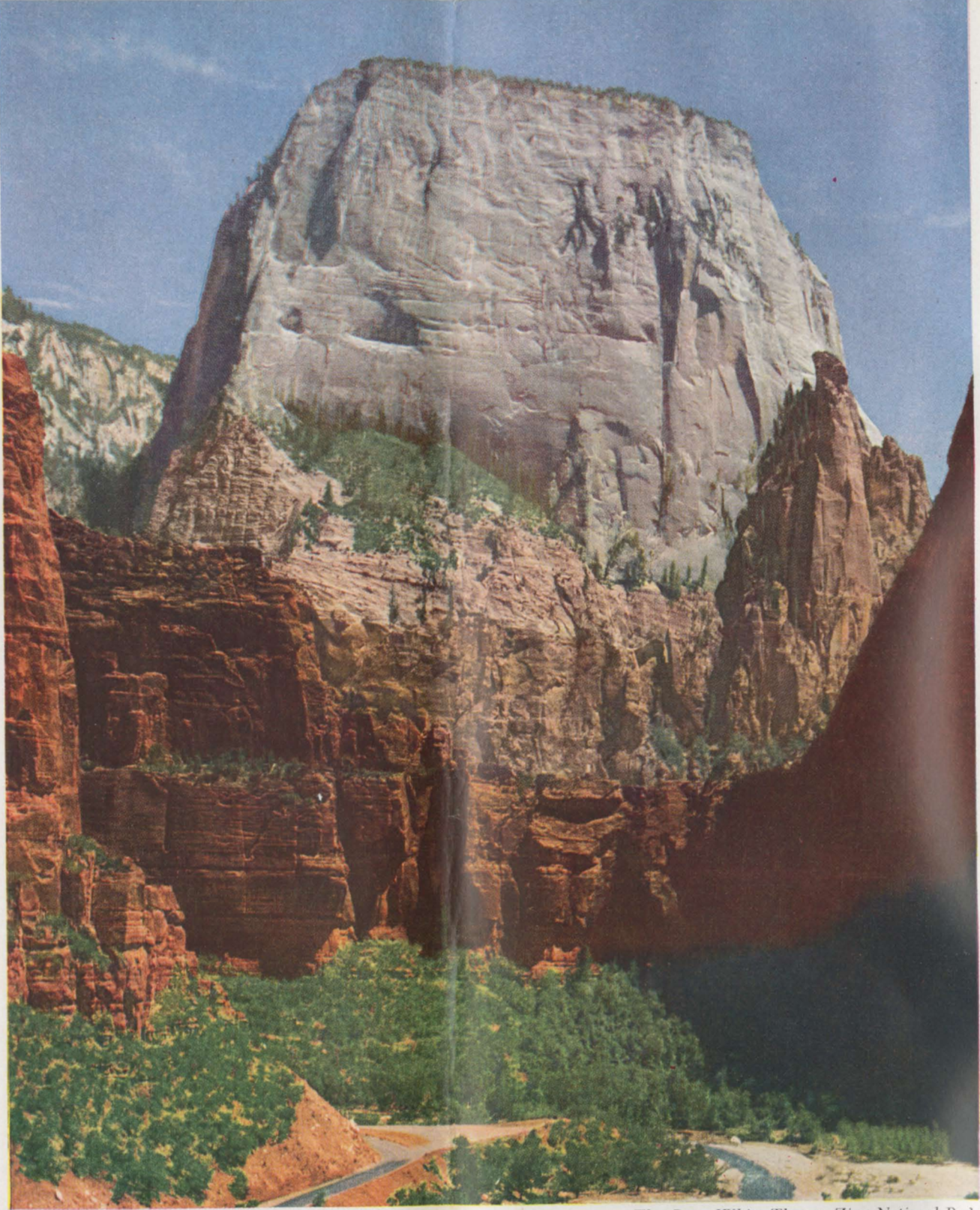
## GRAND CANYON NATIONAL PARKS

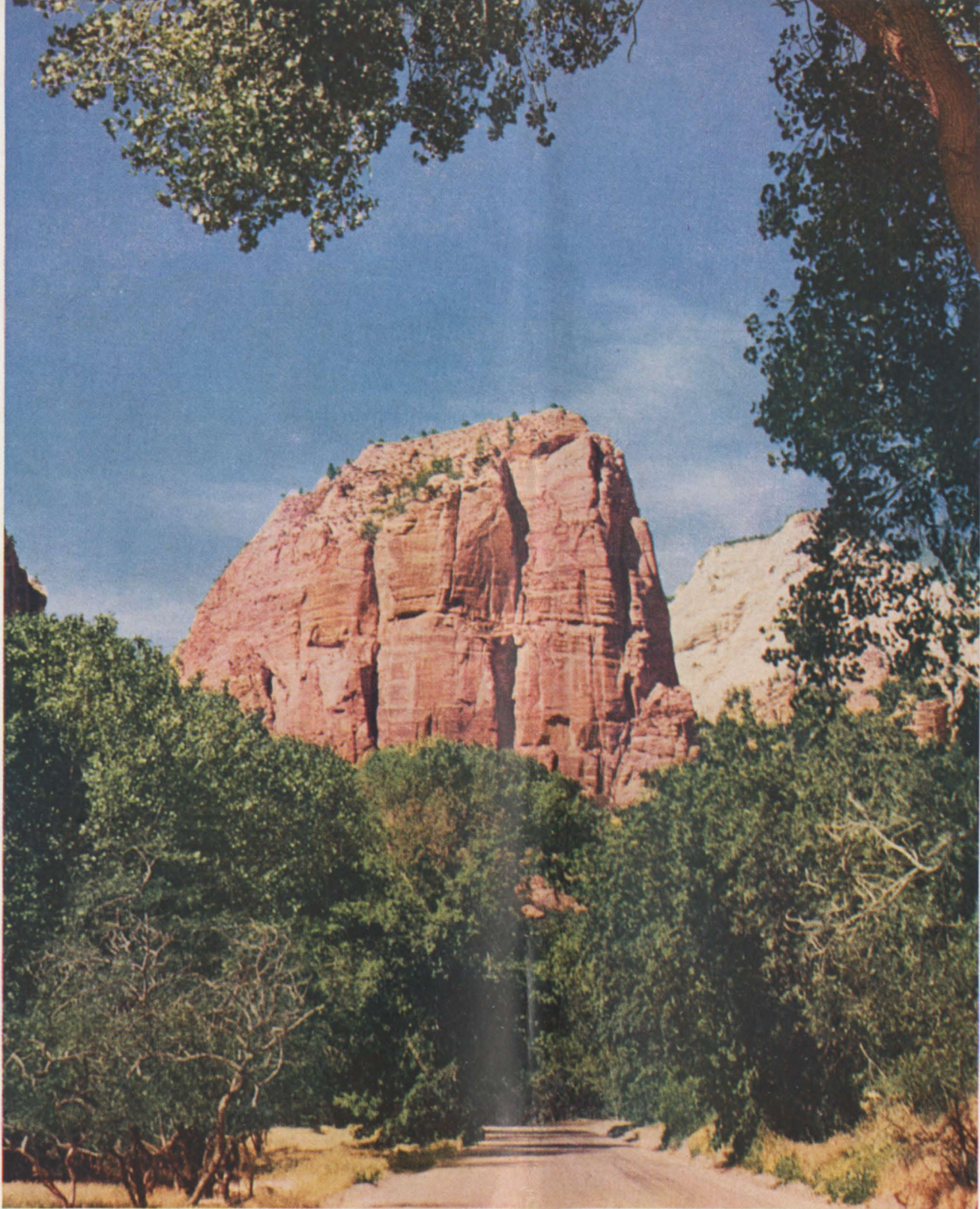
### SOUTHERN UTAH • ARIZONA

Imagine yourself standing on the very rooftop of the great southwestern United States. Before you, in an area overlapping Utah and Arizona, stretches a region where water and weather and living stone have clashed in a 200-million-year struggle . . . where the gashed and serried battleground of Nature's forces has become the world's most amazing scenic wonderland.

Zion, Grand Canyon and Bryce Canyon National Parks, Cedar Breaks National Monument, the Kaibab National Forest — here lie literally back to back, and can all be visited in a single tour of as little as three days! Nowhere else on earth is concentrated such scenic grandeur in so small an area: nowhere else can you make such intimate contact in so short time, with the varied attractions of the great outdoors . . . its rhapsody of mountain heights and canyon depths, its primeval forests, its gentle wildlife, its flowers and vegetation in gorgeous pastel shades.

The Chicago and North Western System herein presents your introduction to the most intensely interesting mountain motor tour in America. Surfaced highways all the way, newest type of comfortable motor buses, careful and courteous drivers, pleasant companions, fine food and lodge accommodations, evening entertainments and dancing — all these in a world sublime in form and color, make the Utah-Arizona Parks tour one that must be experienced personally to be fully appreciated.





*Angels Landing, Zion National Park*

# ZION NATIONAL PARK

And so you're off for a tour of three National Parks, a National Forest and a National Monument! Notice the college athletic type bus drivers. Most of them are college men, natives of the West — they can explain this region as no one else could.

Notice too, as you settle in your roomy, deep-cushioned seat, that the tops of the buses are open to comfortably provide every advantage in viewing the country. Leaving Cedar City for Zion National Park, you pass through the Great Basin region, a part of prehistoric Lake Bonneville. After passing the village of Kanarra the Zion Park Highway parallels Ash Creek, a tributary of the Virgin, and enters the region known as Utah's "Dixie". This section of Utah was first settled by Mormon colonists in 1858. Three miles south of Toquerville the highway turns eastward and you now approach the Gates of Zion. On the left the grand West Temple of the Virgin dominates the landscape. The Virgin River is near at hand on the right. The foreground landscape is red and the temples of Zion are banded with buff, red, pink and gray. The sublime colors and lofty reaches of this region inspired the Mormon people who pioneered here to call it "Zion" . . . and once you see it, you will admit that "heavenly" is an apt term for such magnificent scenery. The mountains and canyons of Zion National Park look as if they had been painted by some

giant artist, using a rainbow for his palette.

The highway now ascends Zion Canyon. Flanking the entrance are the East and West Temples, two great domes streaked with crimson that extends down their pale sides. The great red sandstone pile of the Watchman looks serenely out over the valley. Occasionally the Canyon broadens into wide courts of rare natural beauty, such as the Court of the Three Patriarchs or the Temple of Sinawava, carpeted with green and decorated with aspens. The brilliantly stained buttes that surround these courts add to their enchantment. As you ride through Zion you understand how descriptive are the names given these multi-colored peaks: The Mountain of the Sun, the Mountain of Mystery, the Towers of the Virgin, Angels Landing, Altar of Sacrifice, and most impressive of all, the Great White Throne, rising a sheer 2,500 feet from the valley floor.

At Zion you'll find the pleasant accommodations and superb meals that will mark the entire trip. Zion Lodge, with its broad terrace, corral and swimming pool, is nestled at the very base of Red Arch Mountain and dwarfed by the walls that tower about it. Here, too, you'll have ample opportunity for exploration, on foot or horseback, along trails that lead to many new delights . . . to cliff dwellings that date back at least a thousand years . . . to high observation points, in the company of a carefree party led by a broad

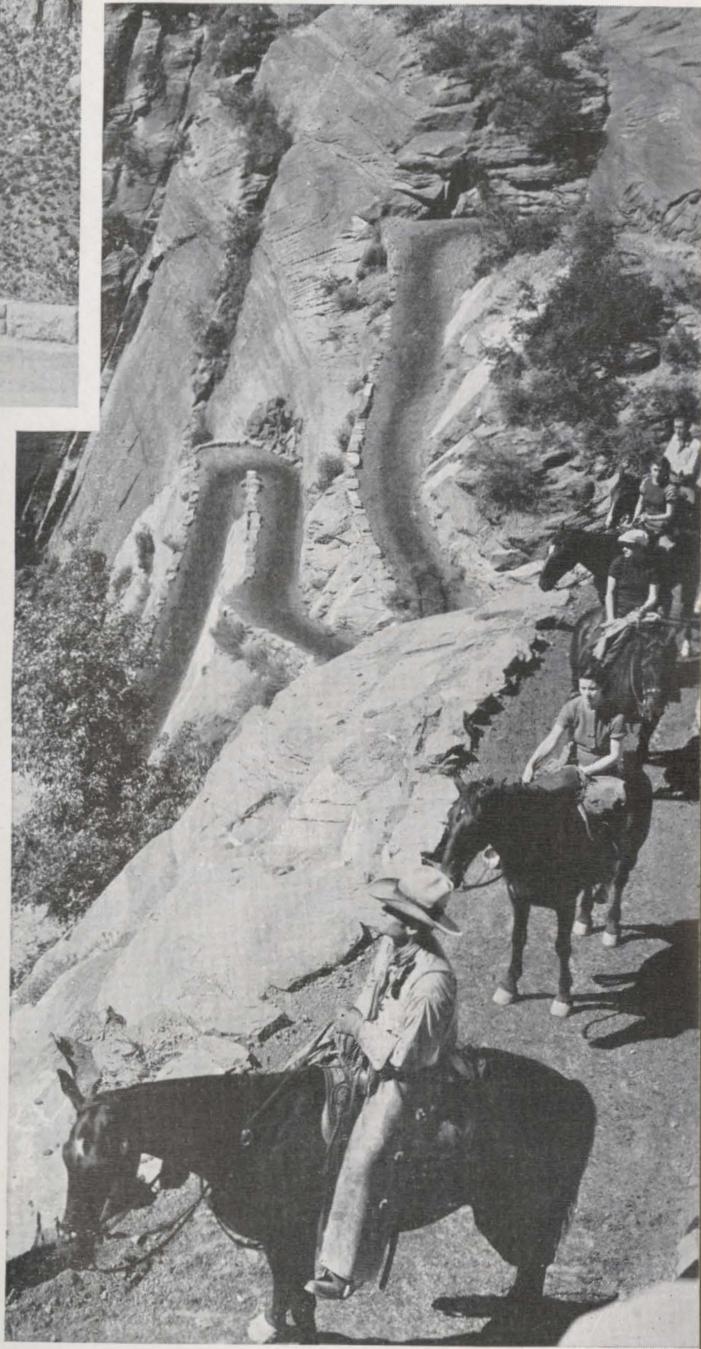


*Motor Bus Passing West Temple in Zion*

hatted, high heeled guide who delights in spinning yarns as you ride along the trail. Zion will be an auspicious beginning and a true highlight of one of the most pleasurable vacations you could ever experience.

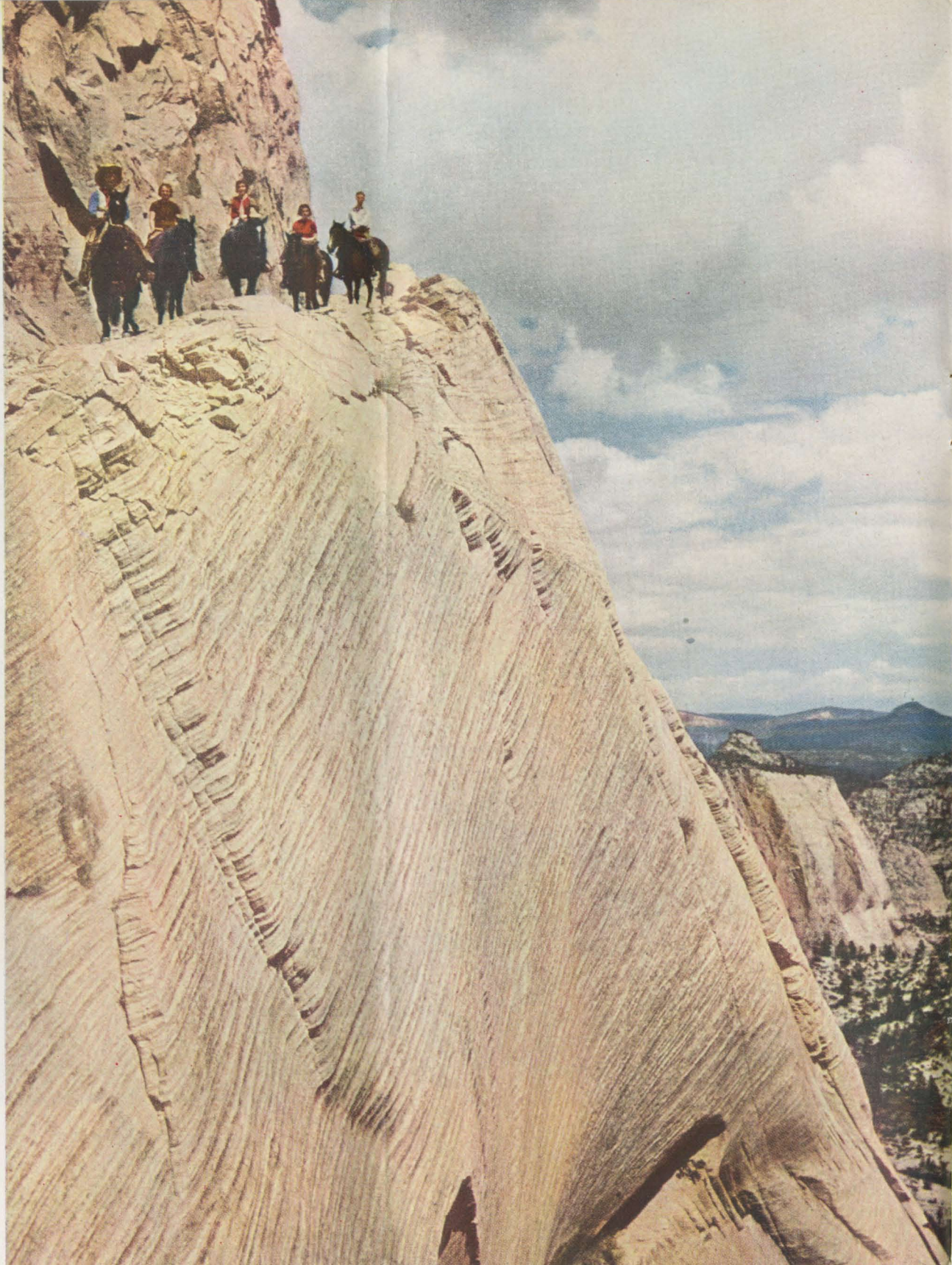
## MOUNT CARMEL HIGHWAY

Another treat that makes this tour unique is the drive from Zion over the 25-mile Mount Carmel Highway, on the way to Grand Canyon National Park. In a series of switchbacks the highway climbs the base of one of the walls of Pine Creek Canyon, a tributary of Zion, then suddenly enters a great tunnel, cut through solid rock for more than a mile by the engineering genius of the National Park Service. Opening from the tunnel are six giant "windows" looking out upon views of inspiring grandeur. Beyond the tunnel you are taken through several spectacular gorges, far different from anything to be seen elsewhere on the trip.

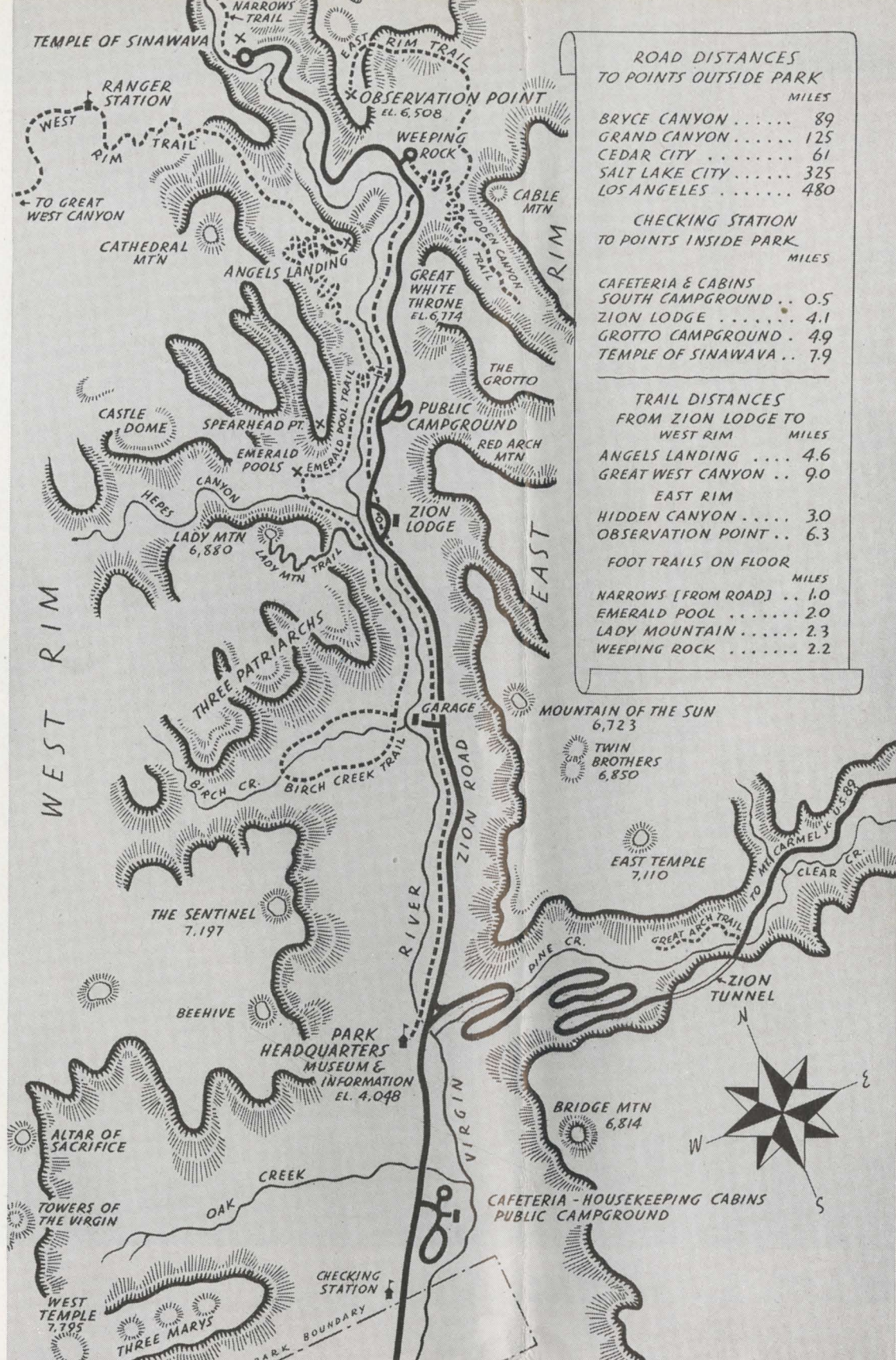


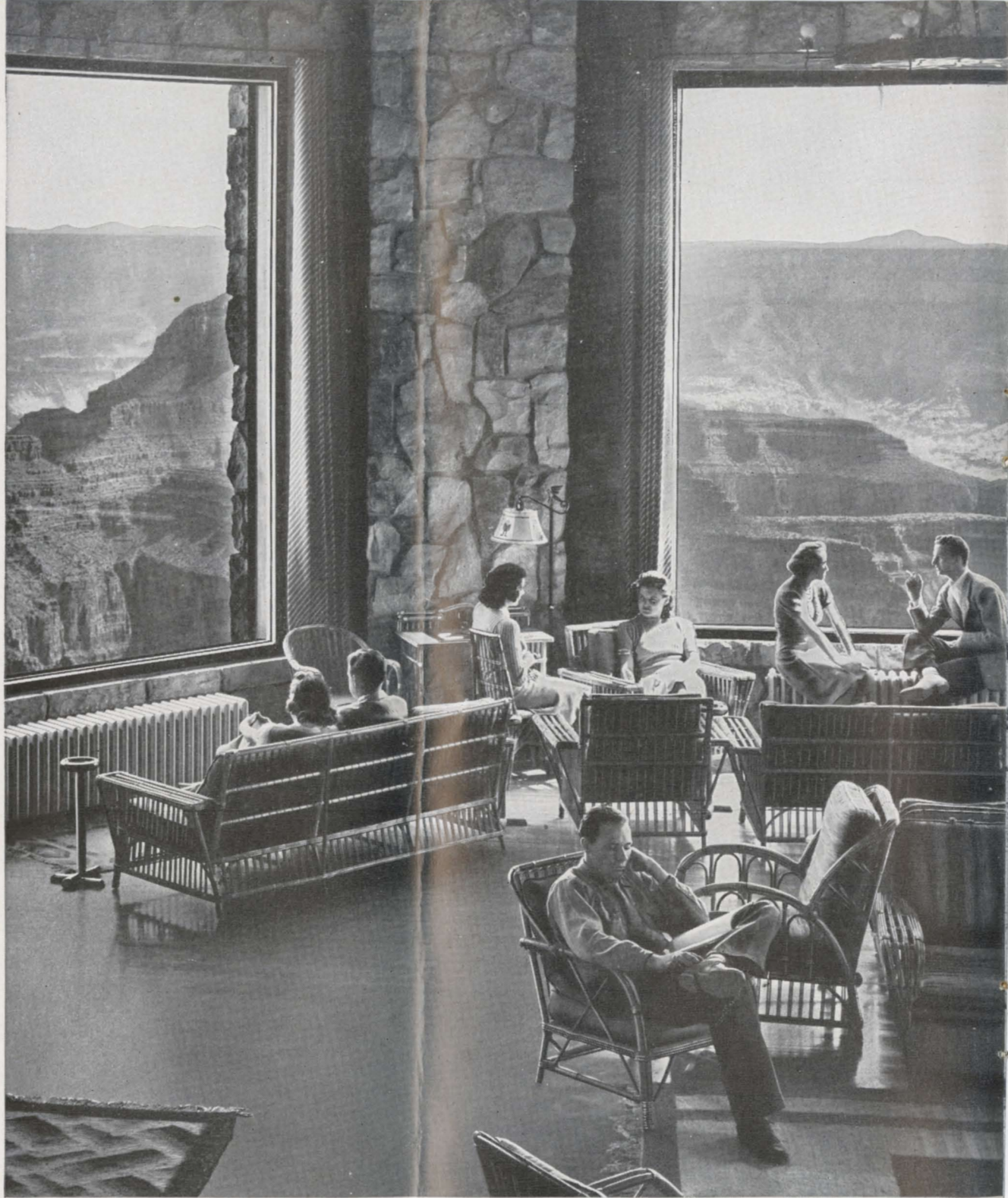
*This Winding Trail Climbs the Walls of Zion National Park*

Easy Trails  
Lead to the  
Sky-high Rims  
of Zion Canyon









The windows of Grand Canyon Lodge look out upon one of earth's most sublime scenes — the mighty Grand Canyon of the Colorado River

# KAIBAB NATIONAL FOREST

The remainder of the trip to Grand Canyon is one you will thoroughly enjoy. The route crosses the Prismatic Plains, one of America's most exquisitely colored upland regions, and then enters virgin timber — the Kaibab National Forest. It comprises more than 723,000 acres of yellow pine, Douglas fir and Engelman spruce, with occasional open, grassy meadows fringed with aspen that in autumn turn golden in rich contrast with the blue-green trees beyond.

Wild life abounds in protected Kaibab. Here are thousands of deer and antelope, the herds

usually seen as the bus approaches. Here, too, is the white-tailed Kaibab squirrel, found nowhere else in the world. A sharp watch for them scampering in the trees is almost certain to bring its reward.

For more than 35 miles the road winds through the green of the Kaibab, then straightens out into a broad avenue leading to Grand Canyon Lodge, located on the very rim of the canyon. Soon you are in the Lodge, looking out through the broad windows that frame one of the world's most fascinating scenes — the Grand Canyon of the Colorado.

# GRAND CANYON NATIONAL PARK

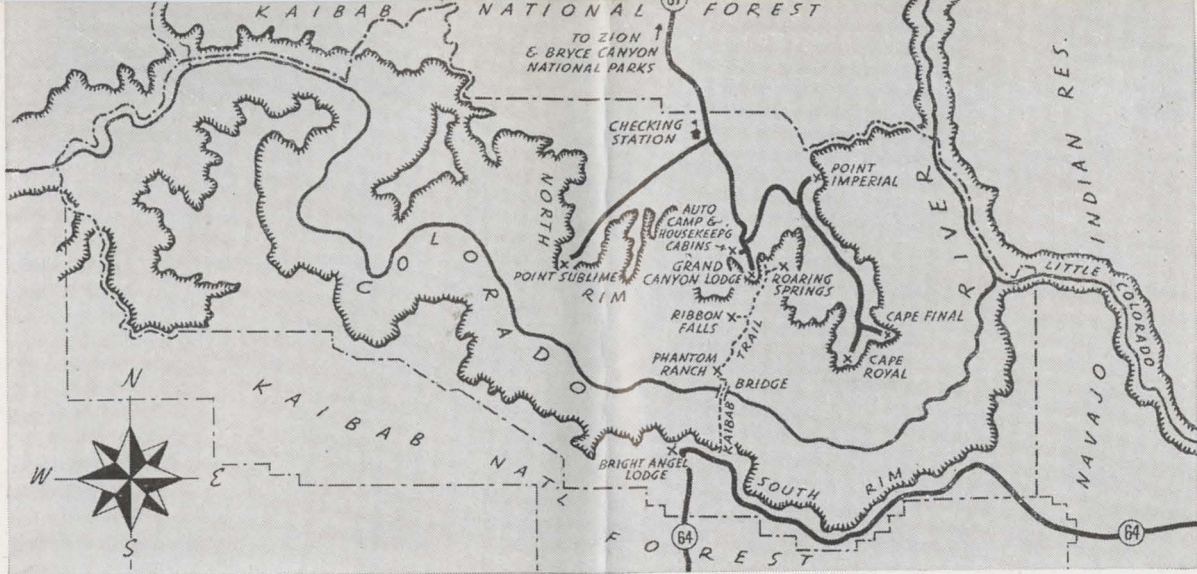
You've probably heard stories of what people have said upon first viewing Grand Canyon. Most of them sound absurd — until you see Grand Canyon yourself. You may say nothing at first, for while other Parks in this region provoke exclamations of wonder and delight, the immensity of this great chasm will fill you with an indefinable awe.

Here stretching before you until the shapes beyond are lost in the purpling haze, lies the world's most wonderful spectacle, alive with a million moods . . . the product of centuries of ceaseless etching by wind, rain and sun, and by the river that still pursues its relentless way, bearing on its flood tons of crumbling

walls. Truly, as John Burroughs said, it is "the Divine Abyss."

The Grand Canyon is titanic in size, four to eighteen miles wide and a mile deep. At the bottom rushes the Colorado River, seemingly but a silver thread. Rising from the depths of the canyon are whole ranges of mountains, their bases a mile below where you sit. A single canyon? It would be more accurate to say it is a labyrinth of canyons, of tremendous buttes and temples and capes that extend for 217 miles along the river!

Here again are the colors that distinguish the Southern Utah-Arizona Parks from all others . . . a sea of colors, spreading over the rock



temples and into the depths of the chasm in an endless panorama of shifting light and shadow.

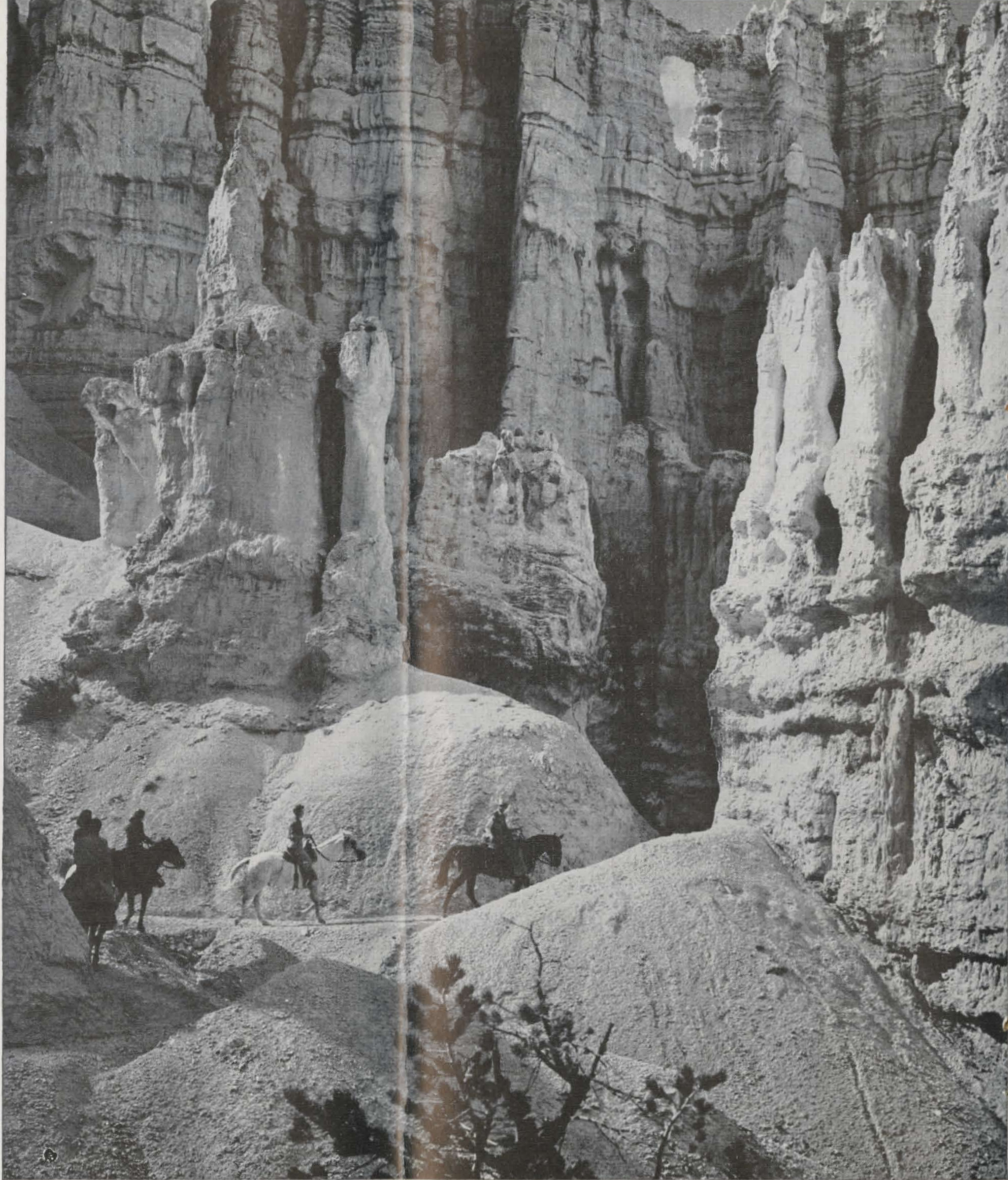
You arrive at the Canyon during the noon hour when the great chasm is flooded with light. In the late afternoon, the sun, hanging low over the Kaibab will paint deep shadows on the canyon formations. As you watch, unreal tints of red deepen to purple—grays and greens and yellows change to magical blues. The next morning you'll join the other visitors to watch the rising sun as it slants across the Painted Desert, outlining the great capes in a halo of golden light . . . one of the most thrilling spectacles the Canyon affords. And all through the day, look as often as you like, Grand Canyon never will be twice alike, for it changes with the changing sun. The despair of artists, it must be seen, its atmosphere felt, to be understood.

No visit to Grand Canyon is really complete without a journey to the bottom of the gorge. It is well worth an extra day or two. You de-

scend the Kaibab trail on muleback, through Roaring Springs Canyon, past beautiful waterfalls, following Bright Angel Creek to the turbulent Colorado and to Phantom Ranch, where overnight accommodations and meals are available. And trout fishing is excellent in Bright Angel Creek!

Bright Angel Point, near which Grand Canyon Lodge and its guest quarters are located, is at a level 1,500 feet higher than that of the south rim opposite, and so yields a tremendous panorama. It is, however, only one of several North Rim vantage points from which the Canyon may be surveyed. You'll want to see as much as possible, and are free to choose your own way of doing this from the many interesting, easy trips available by motorbus, horseback, or foot trails. Point Imperial, Fairview, Cape Royal and Point Sublime are but a few of such superb observation points. For those who wish to view the canyon and its surrounding regions from the air, a plane is usually available for flights.





The trail below Bryce Canyon's "Wall of Windows" is like a landscape from another planet

# BRYCE CANYON NATIONAL PARK

The morning ride from Grand Canyon to Bryce Canyon is delightful. As you go northward you travel again through the magnificent Kaibab Forest and out across the Prismatic Plains to Utah. Beyond Mt. Carmel where the highway from Zion makes a junction with the one on which you are traveling to Bryce, you pass through a region of varied scenic interest. There is some plateau land where far-flung scenic panoramas spread out in all directions, and views of the towers of Zion are disclosed. Then valley land is followed and Red Canyon, a superbly beautiful gateway to the greater glories of Bryce is traversed. At last the highway climbs and crosses a flat and high plateau and you arrive almost unexpectedly at Bryce Canyon Lodge.

"A picture is worth a thousand words" . . . and certainly no verbal description, however excellent, could convey the startling colors of Bryce Canyon National Park as effectively as natural color photographs. For in Bryce's flaming bowl, color is on a vast scale — from delicate pastels to bold, brilliant tones — with sunlight and shifting shadows intensifying the enchantment of the scene.

Bryce Canyon is an immense semi-circular pit gouged from the plateau, measuring three miles in length and two miles across. Reaching upward from the canyon floor a thousand feet below are hundreds of weird rock formations tinted in every color of the spectrum to make Bryce one of the earth's most fascinat-

ing sights. Piute Indians named it "Unka-Timpie-Wa-Wince-Poc-Ich," which in English is "red-rocks-standing-like-men-in-a-bowl-shaped-canyon."

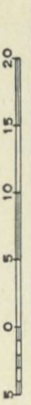
These strange formations will fascinate and intrigue you. The canyon seems to be filled with reproductions of every shape the human imagination has ever conceived, from battleships to bathtubs, from Venus de Milo to Queen Victoria, from bearded pirates to mermaids. Nor do these fantastic carvings concern themselves with living things alone, for Nature has included cathedrals, pipe organs, bridges, castles, spires glistening in the sun, and entire cities painted in all the gay colors of a fiesta.

Lighted by the early morning sun, the canyon figures appear to be tinted a deep rose at the base, their tips a frosty white. At midday the sunlight produces a scene in soft pastel tones. At sunset the rocks seem to glow and the orange tones contrast vividly with the deep purple shadows. Under the enchantment of moonlight Bryce becomes a magic fairyland of white gold minarets and spires, unearthly in its splendor.

You will, of course, want to view this strange wonderland from every possible angle, both from the rim and from the trails that lead down into the canyon. In exploring Bryce you have a choice of many convenient arrangements. You can avail yourself of bus trips to the more distant sections of the Park. You  
(Continued on page 19)

**DISTANCES** MILES

Cedar City to Cedar Breaks Lodge. . . . .	24
Cedar City to Bryce Canyon Lodge. . . . .	86
Cedar City to Zion Lodge. . . . .	63
Cedar City to Grand Canyon Lodge via Mount Carmel Highway. . . . .	187
Grand Canyon Lodge to Cape Royal and Point Imperial and Return. . . . .	50
Bryce Canyon Lodge to Grand Canyon Lodge. . . . .	166
Zion Lodge to Bryce Canyon Lodge via Mt. Carmel Highway. . . . .	92
Zion Lodge to Grand Canyon Lodge via Mount Carmel Highway. . . . .	130



Map Showing Situation of

**ZION NATIONAL PARK**

**BRYCE CANYON NATIONAL PARK**

**CEDAR BREAKS NAT. MONUMENT**

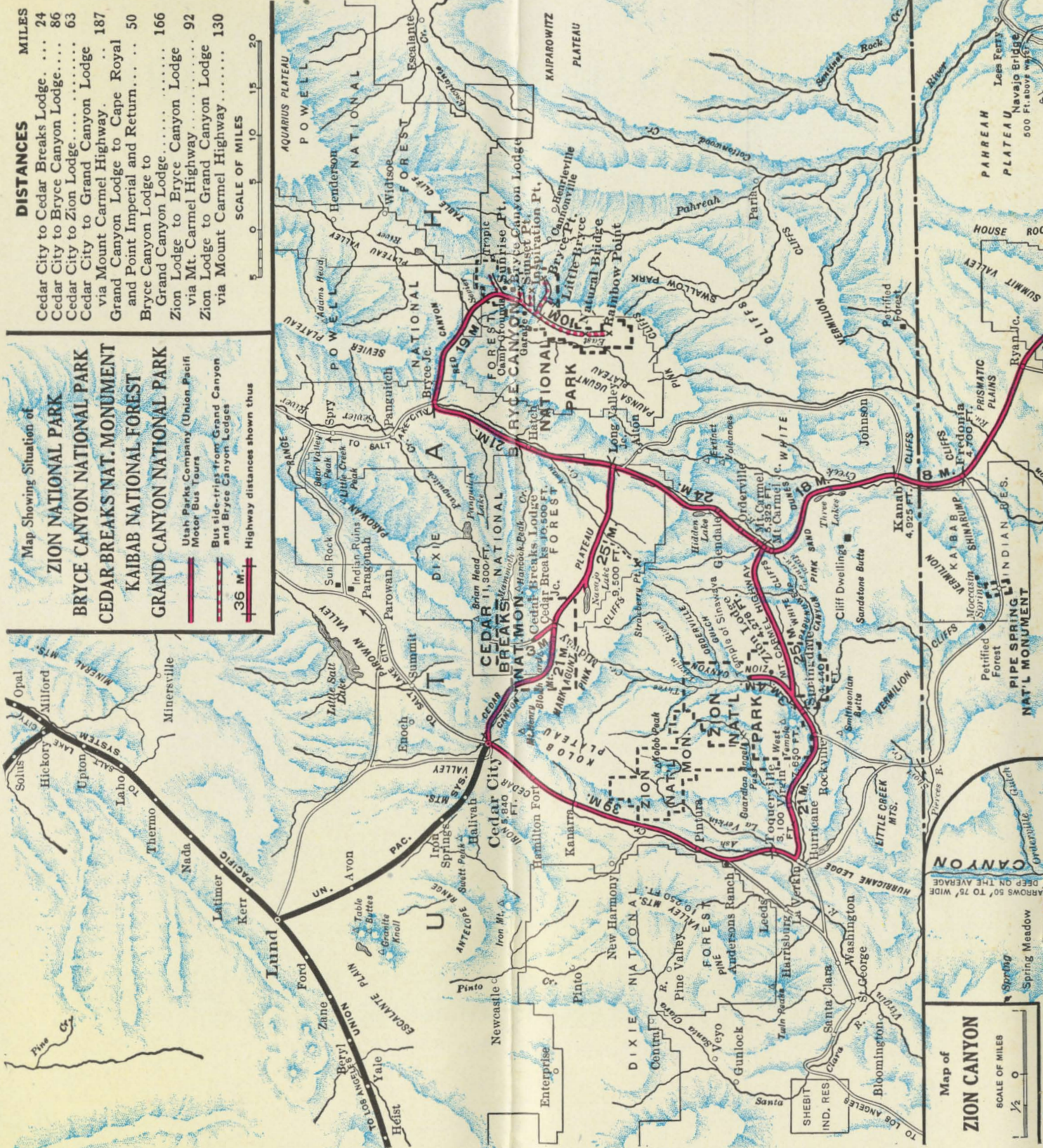
**KAIBAB NATIONAL FOREST**

**GRAND CANYON NATIONAL PARK**

Utah Parks Company (Union Pacific Motor Bus Tour)

Bus side-trips from Grand Canyon and Bryce Canyon Lodges

36 M. Highway distances shown thus



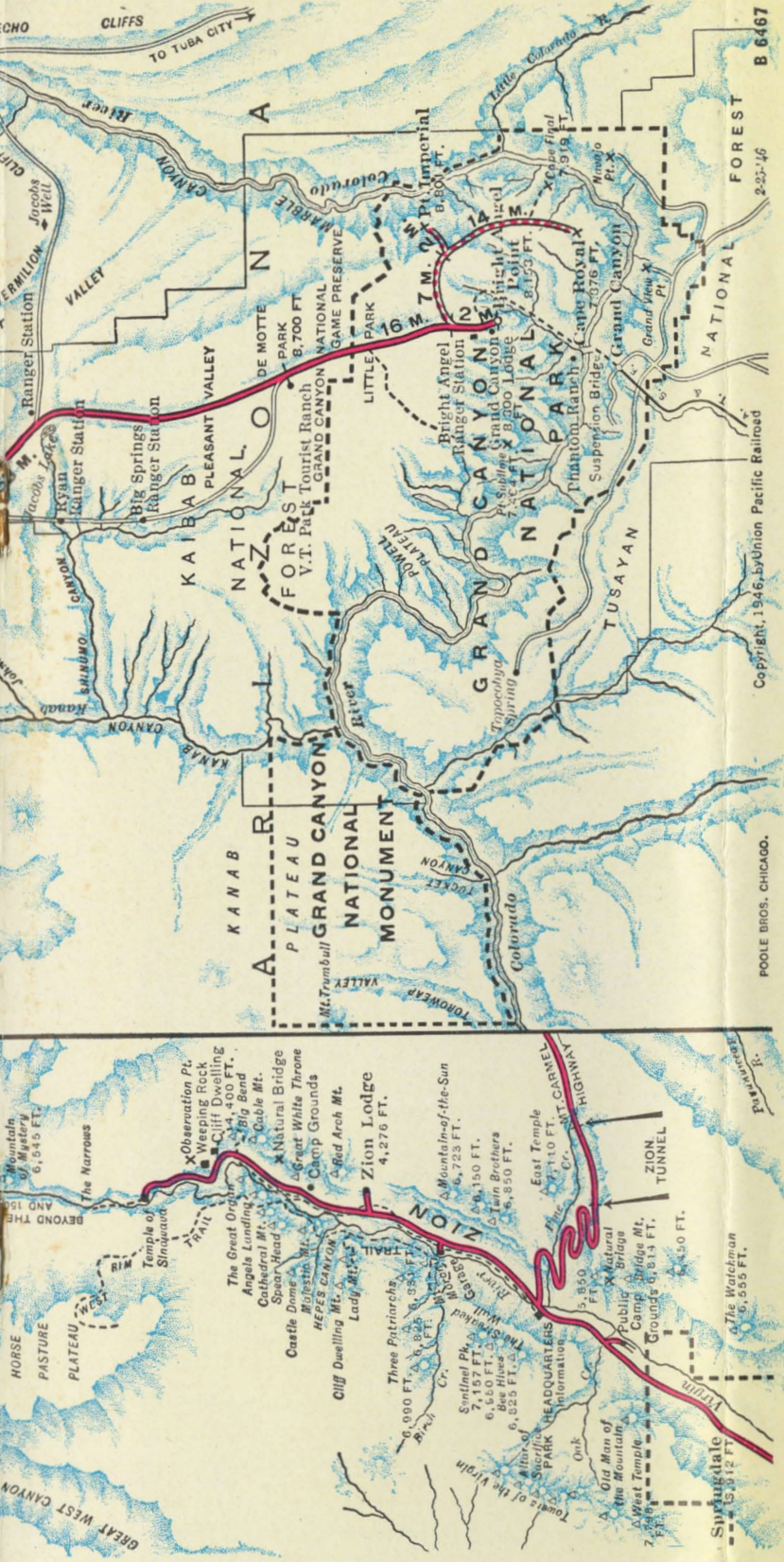
Map of

**ZION CANYON**

SCALE OF MILES

1/2 0



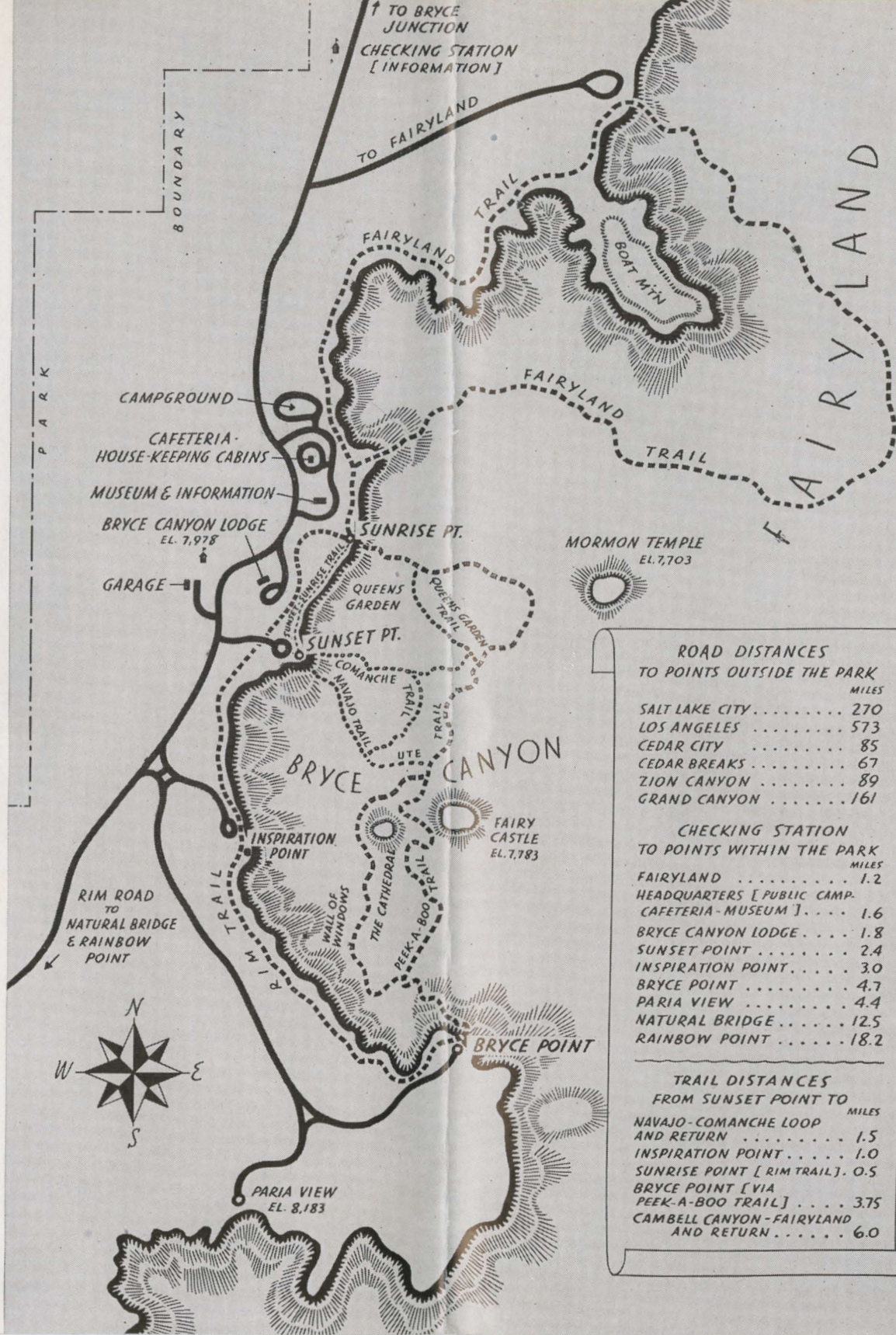


## AMERICA'S IDEAL VACATION PLAYGROUND

Had Nature operated on a deliberately designed plan, the Southern Utah-Arizona National Parks could hardly be improved upon as the ideal vacation region, from the standpoint of accessibility, accommodations, and length of time required to see their scenic beauty. With a limited vacation period, you can make these national

parks your point of destination. Enroute to or from Southern California, they become an interesting side trip to highlight your tour. Or if you're heading for Northern California or the Pacific Northwest, Union Pacific offers a stopover at Salt Lake City and low round trip fare to Cedar City, gateway of the Parks.





**ROAD DISTANCES  
TO POINTS OUTSIDE THE PARK**

	MILES
SALT LAKE CITY	270
LOS ANGELES	573
CEDAR CITY	85
CEDAR BREAKS	67
ZION CANYON	89
GRAND CANYON	161

**CHECKING STATION  
TO POINTS WITHIN THE PARK**

	MILES
FAIRYLAND	1.2
HEADQUARTERS [PUBLIC CAMP-CAFETERIA-MUSEUM]	1.6
BRYCE CANYON LODGE	1.8
SUNSET POINT	2.4
INSPIRATION POINT	3.0
BRYCE POINT	4.7
PARIA VIEW	4.4
NATURAL BRIDGE	12.5
RAINBOW POINT	18.2

**TRAIL DISTANCES  
FROM SUNSET POINT TO**

	MILES
NAVAJO-COMANCHE LOOP AND RETURN	1.5
INSPIRATION POINT	1.0
SUNRISE POINT [RIM TRAIL]	0.5
BRYCE POINT [VIA PEEK-A-BOO TRAIL]	3.75
CAMBELL CANYON-FAIRYLAND AND RETURN	6.0

## BRYCE CANYON NATIONAL PARK

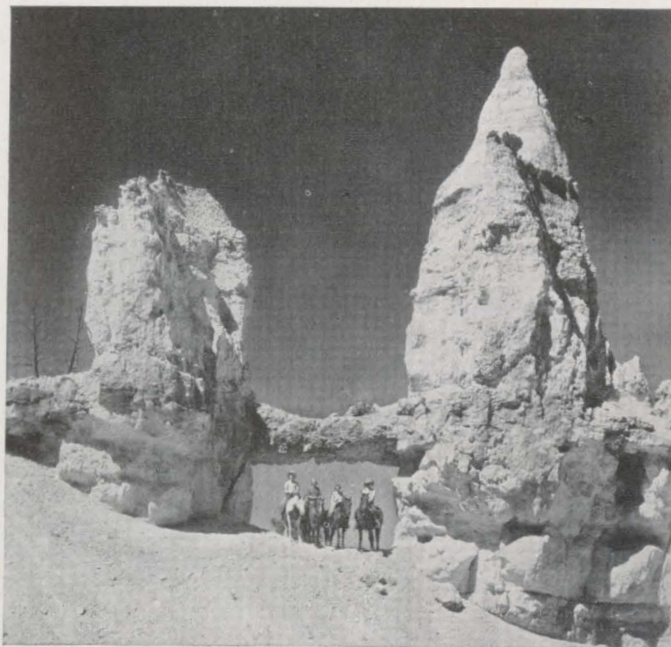
*(Continued from page 15)*

can hike down easy foot trails to the canyon floor. At scheduled hours visitors enjoy the company of ranger-naturalists provided for these walks by the National Park Service. The trips are varied in length to suit all types and ages of visitors. Those who prefer may "hike on horseback." Sure footed mounts are available by the hour or day, a "wrangler" accompanying the party as a guide. But whatever your choice, your visit to Bryce is not complete unless you have seen it both from above and below, for every change of viewpoint reveals some new marvel.

After a trip into the canyon, the lodge at Bryce offers rest and recreation. Situated near the canyon rim and on the edge of the forest, the lodge consists of guest cottages, recreation hall, dining room, post office, and a curio store where the handicraft of Navajo Indian silversmiths is displayed for sale, bracelets, rings, necklaces and other jewelry.

Evenings at the lodge offer a variety of entertainment. A movie in full color is shown and one of the Park Rangers accompanies it with a talk. Informal gatherings around a big log fire appeal to many. In the evenings programs are put on by college students, with the wranglers contributing an occasional story in true western style. Later the recreation hall is available to the guests for dancing.

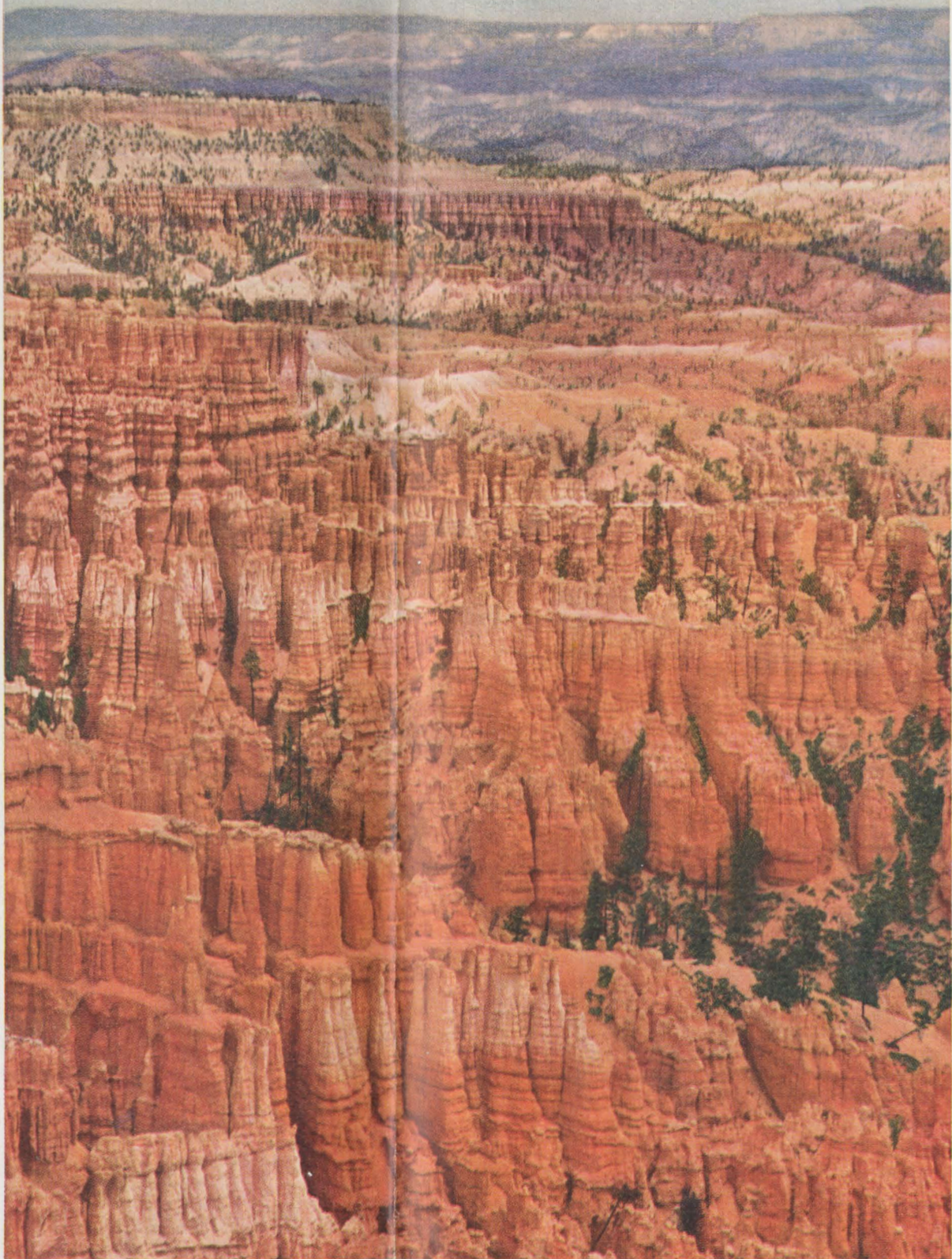
The guest quarters are cozy double lodges, grouped around the main lodge. Each has two single rooms which may be used en suite. In addition, the larger lodges offer a roll-away bed, lounge, private bath, and fireplace in each room. This scheme of accommodations is found at all three of the National Parks in this region.



*Tower Bridge, Bryce Canyon National Park*



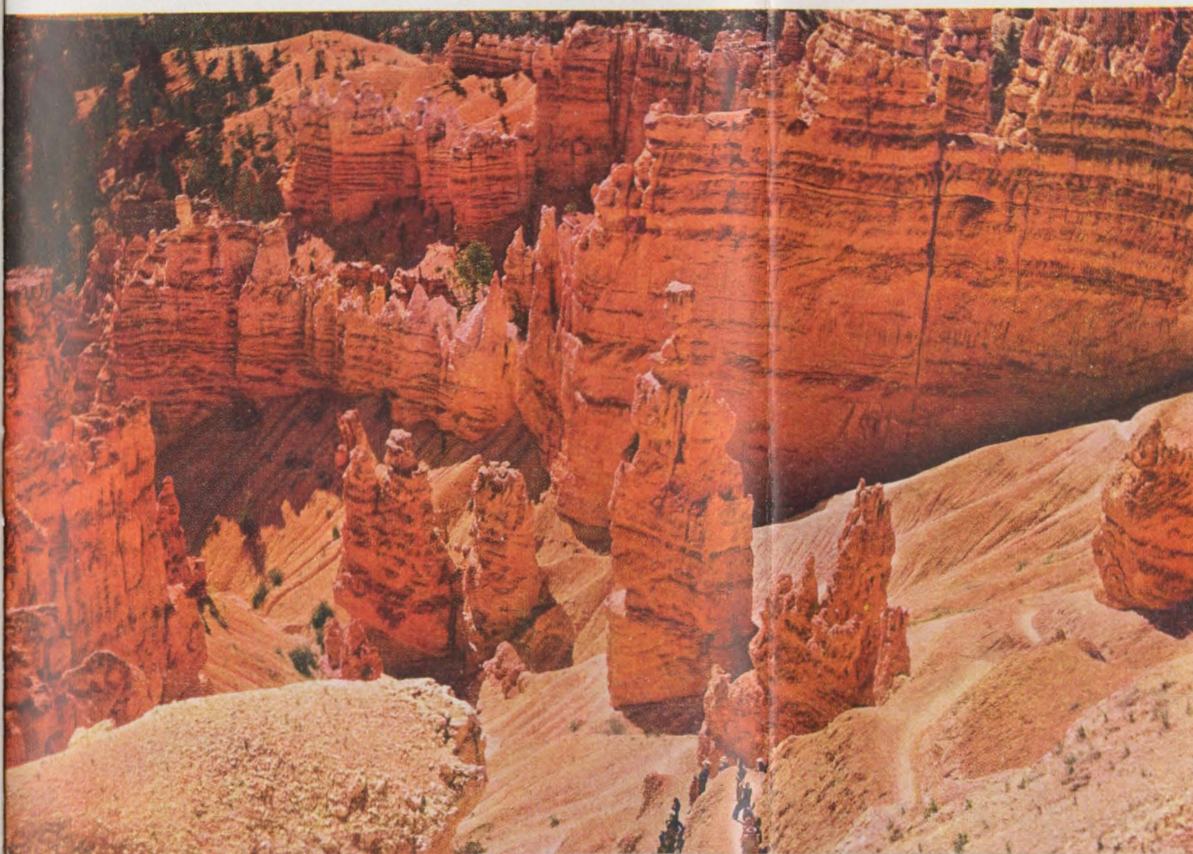
*On the Trail overlooking Bryce Canyon*



*A portion of Bryce  
Canyon, a masterpiece  
of erosion*

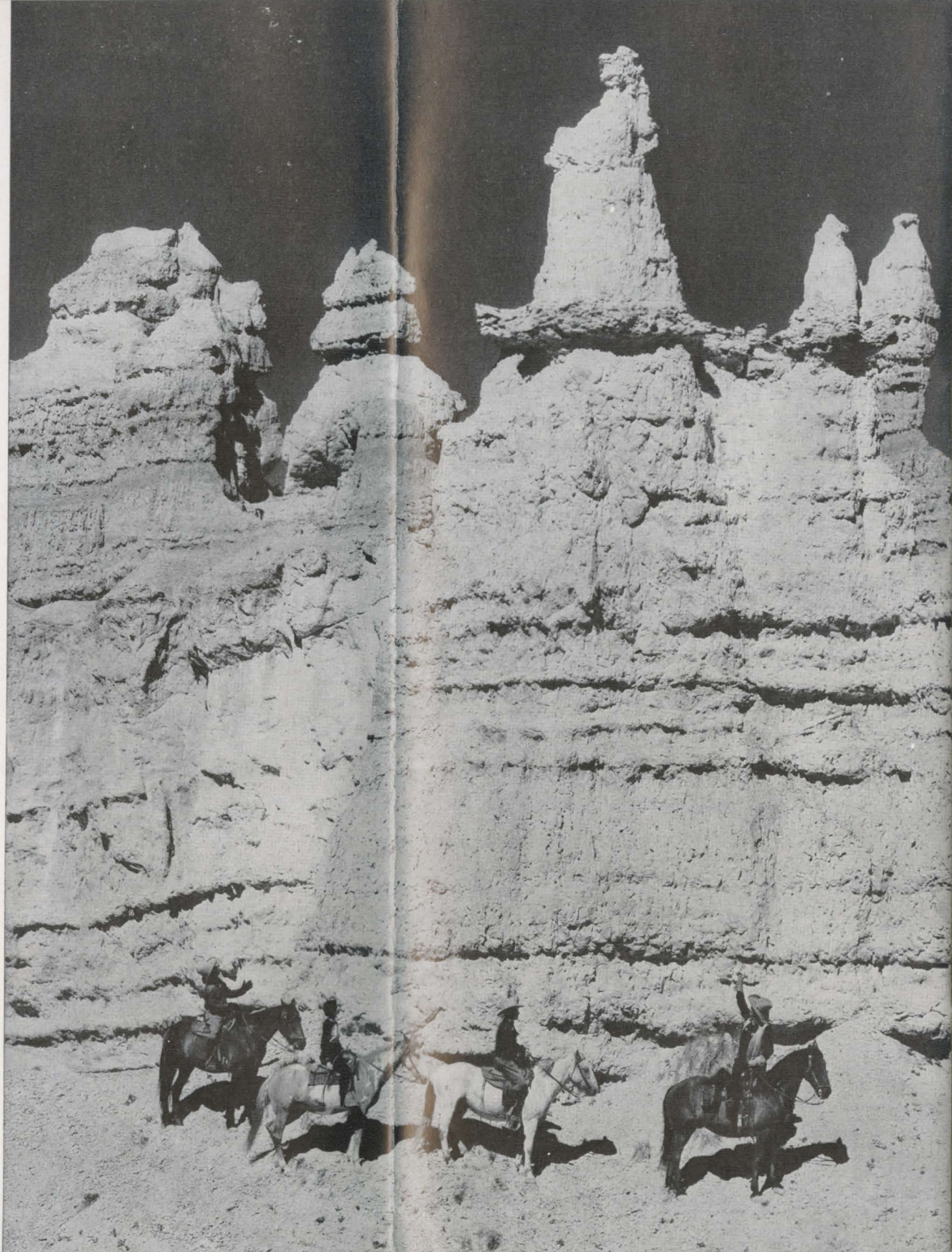


*A horseback trip into Bryce brings a constant succession of scenic thrills*



*Bryce Canyon from the rim — a fairyland of beauty and mystery*

"Queen  
Victoria"  
in Bryce



# CEDAR BREAKS NATIONAL MONUMENT

Leaving Bryce Canyon Lodge for Cedar Breaks, you travel westward, and again pass through Red Canyon. At Cedar Breaks Junction the highway to Cedar City begins to climb another high plateau which it crosses and gives you still more enchanting views of the painted cliff area of southern Utah. The last five miles are through stately pines, firs and spruces. Then, as the bus rounds the curve to the lofty Observation Point, the first sight of Cedar Breaks in the bright sunshine bursts upon you like a flaming rainbow.

"Circle-of-painted-cliffs" the Indians called it . . . but Cedar Breaks, made a National Monument by proclamation in 1933, is more than that. It is a series of tremendous amphitheatres scooped from the amazingly colored strata of the earth's crust and embracing an area of nearly 6,000 acres. At an altitude of over 10,000 feet, you peer across the sheer break of yawning chasm — the deep green of the forest above in sharp contrast with more than 50 shades of

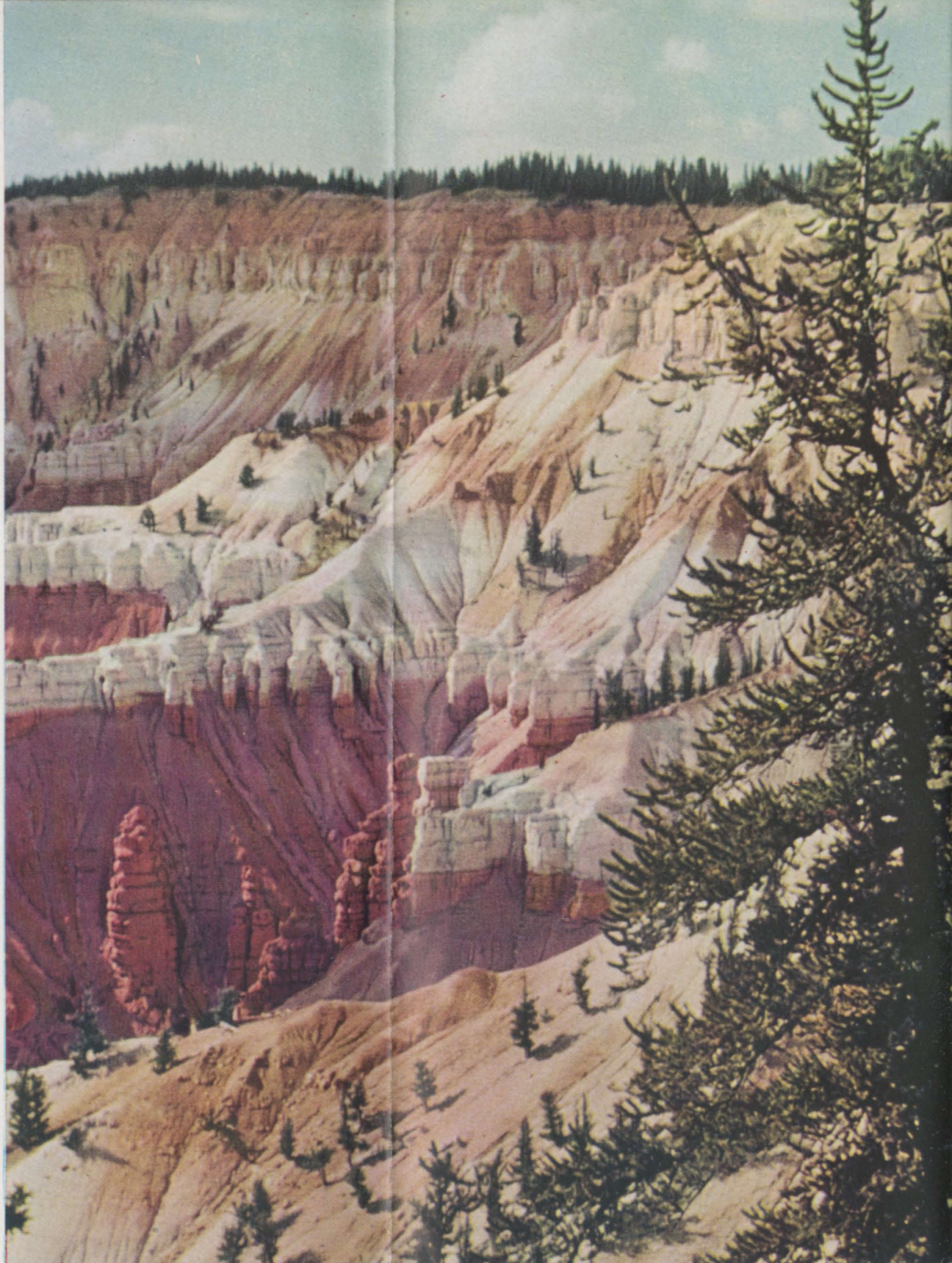
red, orange, yellow, lavender, chocolate, purple and white below. Many of the sloping side walls are broken into massive ridges radiating from the center of the pits like the spokes of a bright-hued circus wagon wheel. The Pink Cliffs formation, here nearly 2,000 feet in thickness, are indescribably beautiful.

Back in the Forest, a short distance from the rim, stands Cedar Breaks Lodge, where a delightful dinner is served before departure to Cedar City.

The descent to Cedar City, the starting point of the circle tour, is through the deep and spectacular Cedar Canyon. In some places the highway runs along shelves cut from solid rock. On this short trip of twenty-five miles there is an elevation drop of about 4,500 feet, or nearly one mile. When your bus emerges from Cedar Canyon you are within sight of Cedar City. In a short time you are again at the Union Pacific station and the glorious adventure of seeing the wonderlands of Utah and Arizona is over.

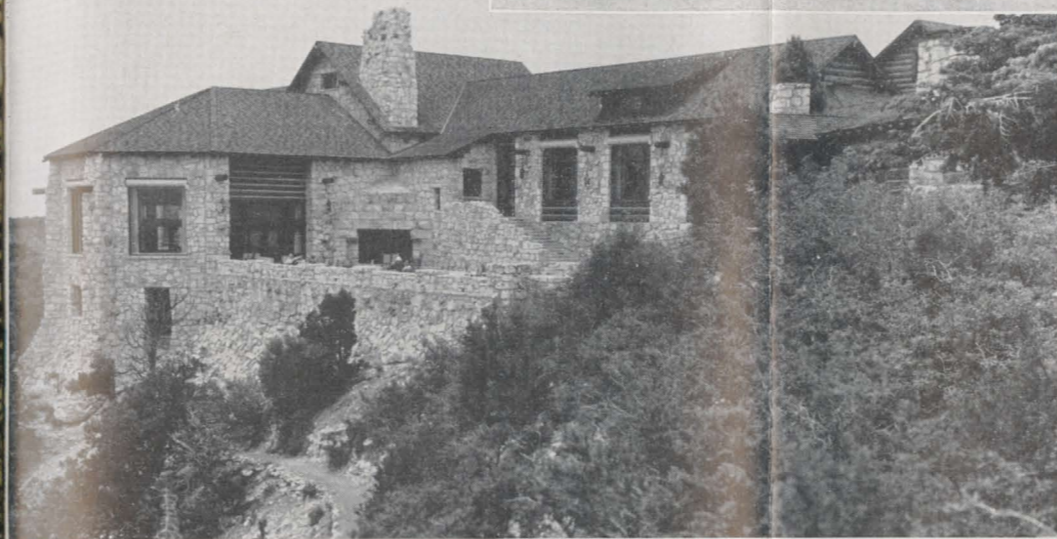
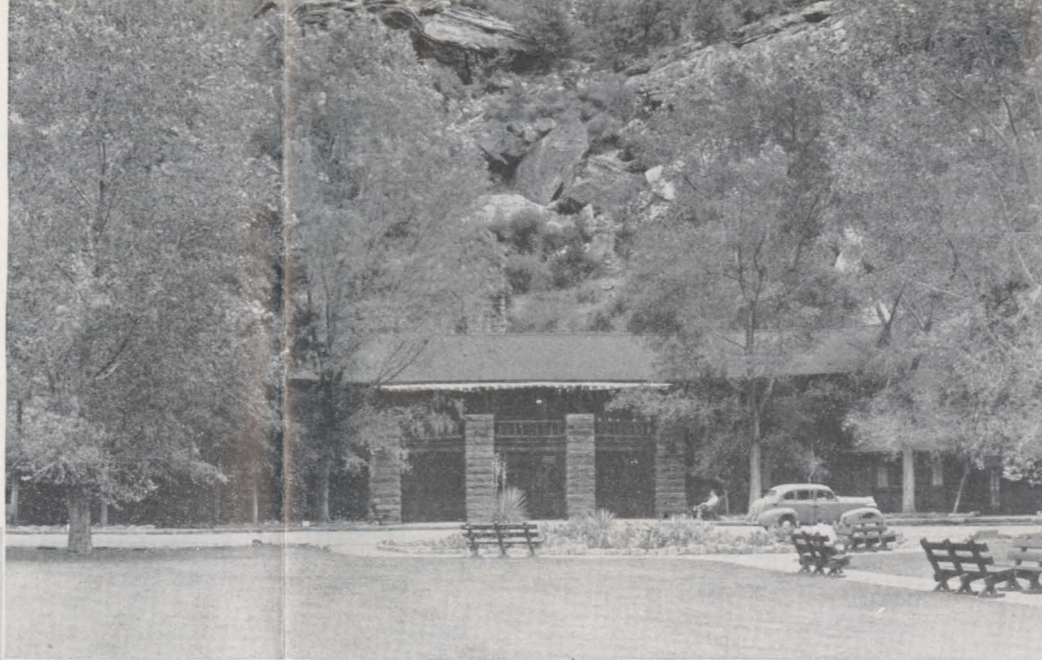


*The Painted  
Buttresses of  
Cedar Breaks  
National  
Monument,  
Utah*





Zion Lodge,  
Zion National Park,  
Utah



Grand Canyon Lodge,  
Grand Canyon National Park,  
Arizona

Bryce Canyon Lodge,  
Bryce Canyon National Park,  
Utah



# UTAH PARKS COMPANY MOTOR BUS TOURS

from Cedar City, Utah, to

ZION · GRAND CANYON

BRYCE CANYON NATIONAL PARKS

Kaibab National Forest

Cedar Breaks National Monument

1951 SEASON

June 18 to September 5

While almost any plan for visiting the colorful Utah-Arizona National Park region may be arranged to suit your needs, for greatest convenience and economy you should take one of the all-expense tours described on this and the following page.

All Tours are available from Cedar City, Utah, June 18 to September 5, inclusive.

The last date on which service is available for return from Grand Canyon is September 7, the last date for return from Zion, Bryce Canyon or Cedar Breaks is September 9. Subject to changes as necessitated by weather or road conditions.

The all-expense rates quoted on following pages include the use of standard cabin accommodations based on two or more persons in one room. Stopover at any standard lodge, on any Tour, may be made at additional cost of \$8.25 per day, American plan. If de luxe lodge accommodations are desired in place of standard lodge accommodations, the additional charge per day for those holding all-expense tickets on American plan at Bryce Canyon, Grand Canyon or Zion National Park is as follows:

One person in room.....\$4.50  
Two persons in room..... 2.00 each  
Three persons in room..... 1.00 each

All rates shown herein do not include State or Federal Taxes

A limited number of standard guest lodges with private shower and toilet will be available at each of the parks. These lodges

have two separate rooms, each with twin beds, and may be used en suite. Rate—European Plan \$4.50 per day for one person; \$6.00 per day for two persons.

## SERVICE TO CEDAR CITY

During the Parks season Union Pacific operates through sleeping cars from Salt Lake City and from Los Angeles to Cedar City, Utah, the gateway to the Parks. In addition, comfortable motor buses meet trains at Lund, Utah, on the main line, to pick up visitors en route to the Parks who do not hold space in these through sleeping cars.

## PARK TOUR ITINERARIES AND COST

### TOUR No. 1—FIVE DAYS

Through Zion National Park, Mt. Carmel Highway, Kaibab Forest, Grand Canyon National Park, Bryce Canyon National Park, Cedar Breaks National Monument

1st day—Lv. Cedar City . . . . .	8:30 a.m.
“ Ar. Zion National Park . . . . .	10:45 a.m.
2d day—Lv. Zion National Park . . . . .	9:00 a.m.
“ Ar. Grand Canyon . . . . .	1:00 p.m.
3d day—At Grand Canyon	
4th day—Lv. Grand Canyon . . . . .	8:00 a.m.
“ Ar. Bryce Canyon . . . . .	1:00 p.m.
5th day—Lv. Bryce Canyon . . . . .	2:30 p.m.
“ Ar. Cedar Breaks . . . . .	5:00 p.m.
“ Lv. Cedar Breaks . . . . .	6:45 p.m.
“ Ar. Cedar City . . . . .	7:45 p.m.

All-expense, including motor bus transportation, breakfast at Cedar City, three meals and one lodging at Zion Lodge, six meals and two lodgings at Grand Canyon Lodge, four meals and one lodging at Bryce Canyon Lodge and one meal at Cedar Breaks Lodge.....\$73.00  
Plus Federal Tax.. 5.06

### TOUR No. 1A—FIVE DAYS

Through Zion National Park, Mt. Carmel Highway, Grand Canyon National Park, Kaibab Forest, Bryce Canyon National Park, Cedar Breaks National Monument

1st day—Lv. Cedar City . . . . .	5:30 p.m.
“ Ar. Zion National Park . . . . .	7:30 p.m.
2d day—Lv. Zion National Park . . . . .	9:00 a.m.
“ Ar. Grand Canyon . . . . .	1:00 p.m.
3d day—At Grand Canyon	
4th day—Lv. Grand Canyon . . . . .	8:00 a.m.
“ Ar. Bryce Canyon . . . . .	1:00 p.m.
5th day—Lv. Bryce Canyon . . . . .	9:00 a.m.
“ Ar. Cedar Breaks . . . . .	11:30 a.m.
“ Lv. Cedar Breaks . . . . .	1:00 p.m.
“ Ar. Cedar City . . . . .	2:00 p.m.

All-expense, including motor bus transportation and two meals and one lodging at Zion Lodge, six meals and two lodgings at Grand Canyon Lodge, three meals and one lodging at Bryce Canyon Lodge and one meal at Cedar Breaks...\$66.75  
Plus Federal Tax.. 5.06

### TOUR No. 2—THREE DAYS

*Through Zion National Park, Mt. Carmel Highway, Bryce Canyon National Park, Cedar Breaks National Monument*

1st day—Lv. Cedar City . . . . .	8:30 a.m.
“ Ar. Zion National Park . . . . .	10:45 a.m.
2d day—Lv. Zion National Park . . . . .	1:00 p.m.
“ Ar. Bryce Canyon . . . . .	4:00 p.m.
3d day—Lv. Bryce Canyon . . . . .	2:30 p.m.
“ Ar. Cedar Breaks . . . . .	5:00 p.m.
“ Lv. Cedar Breaks . . . . .	6:45 p.m.
“ Ar. Cedar City . . . . .	7:45 p.m.

All-expense, including motor bus transportation, breakfast in Cedar City, four meals and one lodging at Zion Lodge, three meals and one lodging at Bryce Canyon Lodge, and one meal at Cedar Breaks Lodge. . . . . \$43.50  
Plus Federal Tax. . . 3.11

### TOUR No. 2A—THREE DAYS

*Through Zion National Park, Mt. Carmel Highway, Bryce Canyon National Park, Cedar Breaks National Monument*

1st day—Lv. Cedar City . . . . .	5:30 p.m.
“ Ar. Zion National Park . . . . .	7:30 p.m.
2d day—Lv. Zion National Park . . . . .	1:00 p.m.
“ Ar. Bryce Canyon . . . . .	4:00 p.m.
3d day—Lv. Bryce Canyon . . . . .	9:00 a.m.
“ Ar. Cedar Breaks . . . . .	11:30 a.m.
“ Lv. Cedar Breaks . . . . .	1:00 p.m.
“ Ar. Cedar City . . . . .	2:00 p.m.

### TOUR No. 2A—Continued

All-expense, including motor bus transportation, three meals and one lodging at Zion Lodge, two meals and one lodging at Bryce Canyon Lodge and one meal at Cedar Breaks Lodge . . . . . \$37.25  
Plus Federal Tax. . . 3.11

### TOUR No. 3—TWO DAYS

*Through Zion National Park, Mt. Carmel Highway, Kaibab Forest, Grand Canyon National Park, and Cedar Breaks National Monument.*

1st day—Lv. Cedar City . . . . .	8:30 a.m.
“ Ar. Zion National Park . . . . .	10:45 a.m.
“ Lv. Zion National Park . . . . .	1:00 p.m.
“ Ar. Grand Canyon . . . . .	5:45 p.m.
2d day—Lv. Grand Canyon . . . . .	1:00 p.m.
“ Ar. Cedar Breaks . . . . .	6:00 p.m.
“ Lv. Cedar Breaks . . . . .	7:30 p.m.
“ Ar. Cedar City . . . . .	8:30 p.m.

All-expense, including motor bus transportation, breakfast at Cedar City, lunch at Zion, three meals and one lodging at Grand Canyon and one meal at Cedar Breaks. . . . . \$39.50  
Plus Federal Tax. . . 3.75

### TOUR No. 4—ONE DAY

*Through Zion National Park*

1st day—Lv. Cedar City . . . . .	8:30 a.m.
“ Ar. Zion National Park . . . . .	10:45 a.m.
“ Lv. Zion National Park . . . . .	7:00 p.m.
“ Ar. Cedar City . . . . .	9:00 p.m.

All-expense, including motor bus transportation, breakfast at Cedar City, two meals at Zion Lodge. . . . . \$16.25  
Plus Federal Tax. . . 1.50

Ready for a Tour through the Parks—Motor Buses at Cedar City Passenger Station

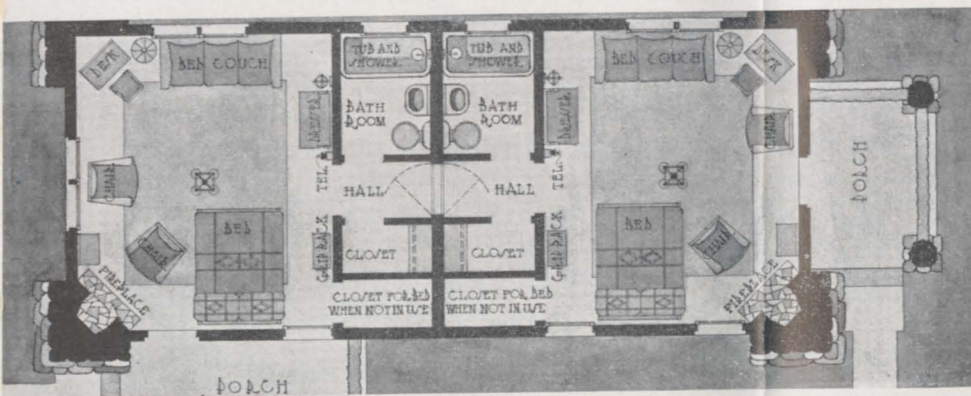




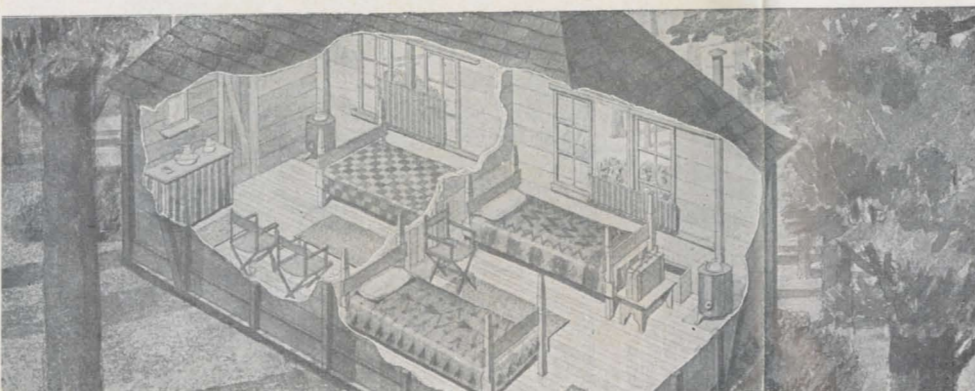
Exterior of de luxe lodges at Zion, Bryce Canyon and Grand Canyon National Parks



Interior of de luxe lodges in the Utah-Arizona National Parks



Above: Floor plan of de luxe guest lodge. Below: Drawing of interior of regular guest lodge.



## ACCOMMODATIONS AND CHARGES

**SCHEDULED MOTOR BUS SIDE TRIPS** From Bryce Canyon Lodge to Inspiration Point, Bryce Point, Little Bryce, Natural Bridge, Rainbow Point, and return, \$2.00 per person. To get a comprehensive view of the Park this side-trip should be taken.

From Grand Canyon Lodge (Grand Canyon National Park) to Cape Royal—Point Imperial and return. A four and one-half hour combination tour. Fare: \$3.00 per person. This trip is well worth while.

From Zion Lodge (Zion National Park) to the Temple of Sinawava and return, fare, \$1.00. Holders of tour tickets who remain overnight at Zion Lodge will be furnished one free trip.

**FARES FOR CHILDREN** For rail transportation to Cedar City, and for motor bus transportation from Cedar City, half fare applies for children of five years and under twelve; children under five years are carried free, via both rail and motor bus, when accompanied by parent or guardian.

Through tickets for children must not be sold for any of the tours; such arrangements for children must be made locally at the Lodges or with the Agent of the Utah Parks Company at Cedar City for motor bus transportation and at the lodges for meals and lodging. For children under eight years of age the lodges make a half rate on table d'hôte meals only.

## A PHOTOGRAPHER'S PARADISE

The Grand Canyon, Zion and Bryce National Parks region seems made-to-order for camera enthusiasts, and especially for color photography. At each of the Park Lodges, you will find a camera shop where fresh supplies are available, pictures developed, and questions answered by expert company photographers. Bring your camera!

**CEDAR CITY** El Escalante Hotel, operated by the Utah Parks Company, is a modern, commodious brick hotel, first class in all its appointments and service. Rooms, without bath, \$2.00 to \$3.00 per day for one person, \$3.00 to \$4.50 per day for two persons; with bath \$4.25 to \$8.00 per day for one person and \$5.75 to \$10.00 per day for two persons. Meals at reasonable prices.

**BRYCE CANYON NATIONAL PARK** A handsome lodge is operated on the European plan by the Utah Parks Co. during the Park season and affords excellent cabin accommodations at rate per day of \$2.50 for one person in room; \$2.00 per person based on two or more persons in a room. Table d'hote meals—breakfast \$1.50, luncheon \$1.75, dinner \$3.00. Shower or tub bath, 25 cents. In addition, there are a number of de luxe lodges, larger and with private bath; charge for de luxe lodges: rates per day, European plan, \$6.50 for one person, \$4.00 each for two persons, and \$3.00 each for three persons in a room.

**GRAND CANYON NATIONAL PARK (NORTH RIM)**—Grand Canyon Lodge, at Bright Angel Point, is operated on the European plan; cabin rate per day \$2.50 for one person in room; \$2.00, based on two or more persons in a room. Shower bath, 25 cents. Table d'hote meals—breakfast \$1.50, luncheon \$1.75, dinner \$3.00. Rates for de luxe lodges, European plan, per day, \$6.50 for one person in room; \$4.00 each for two persons; \$3.00 each for three persons.

**ZION NATIONAL PARK** The accommodations at Zion, including de luxe lodges, are practically the same character as at Bryce and Grand Canyon, and the rates both for regular and de luxe accommodations are the same as shown for those two places.

Admission to the Zion swimming pool, including rental of suit, towel and locker, 50 cents; children under 8 years of age, 25 cents.

**CEDAR BREAKS LODGE** Charge for breakfast \$1.50, luncheon \$1.75, dinner \$3.00. A few regular guest lodges are available. Rates \$2.50 for one person in a room; \$4.00 for two persons.

**SPECIAL AUTOMOBILE SERVICE** Parties holding a minimum of 3 full tickets for a regularly scheduled tour from Cedar City, Utah, may charter for such tour a special private automobile upon payment of \$17.50 per day or part thereof, plus \$2.63 Federal Tax, for entire party, such payment being in addition to the fares paid for the tour tickets. This charge includes all published motor side trips in Bryce, Grand Canyon and Zion National Parks.

**BOOKINGS** The Chicago and North Western System maintains in many of the principal cities of the United States, also in Toronto, Ont., Vancouver, B. C., and Winnipeg, Man., representatives who will gladly assist in making advance reservations at the lodges. This service is furnished without charge. Representatives' addresses are on inside back cover.

**ROUND-TRIP TICKETS** Round-trip excursion tickets at reduced fares are sold from various points in the United States and Canada to Cedar City, Utah, the rail terminus and the gateway to the Utah-Arizona Parks, also via Cedar City in connection with any of the tours listed herein. These tours, at charges shown herein, may be arranged for after arrival at Cedar City, if it is not desired to include them when rail transportation is purchased.

Railroad tickets from eastern points when routed via North Western-Union Pacific are honored without extra charge via Denver, thus affording opportunity to visit Rocky Mountain National Park.

**CEDAR CITY AS A SIDE TRIP** Holders of one-way or Round-Trip tickets to Pacific Coast, or to Yellowstone Park, via North Western-Union Pacific, may obtain stopover at Salt Lake City or Ogden, whence low side-trip fares are in effect during the season for Utah-Arizona visitors. Or if the through ticket reads via North Western-Union Pacific between Omaha, Nebr., and Southern California, stopover may be made at Lund, Utah, where free side-trip may be procured to Cedar City, only thirty-three miles from Lund. If desired, these side-trip tickets may be included at time of purchase of through transportation.

**STOPOVERS** Stopovers on rail tickets will be permitted at all points on going and return trips within final limit. Stopovers on tour tickets will be permitted at all of the tour points by arrangement at the lodges and upon payment of \$8.25 per day for additional meals and lodgings.

**BAGGAGE** Baggage must not be checked beyond Cedar City, Utah, in connection with any of the tours shown herein. Free baggage allowance on tours from Cedar City will be twenty-five pounds for each full ticket and each half ticket. Baggage in excess of twenty-five pounds will be charged for at rate of five cents per pound, which applies regardless of distance, on any tour shown. Trunks will not be carried on passenger motor buses, and if desired on the tours, special arrangements must be made with the agent of Utah Parks Co. at Cedar City. The liability of the company handling baggage on any of the tours from Cedar City will be limited to a maximum of \$25.00 to any one passenger in case of loss of, or damage to, baggage while it is in charge of the company. Storage charges on hand baggage and trunks checked to any point on the North Western-Union Pacific on route of ticket will be waived for the period of time consumed while the owner is making side trip (when necessary), and park tour.

**WHAT TO WEAR** Ordinary clothing should be worn, but one should be prepared for the sudden changes of temperature common at elevations of from 8,000 to 9,000 feet. Outing clothes, including riding breeches, stout outing shoes or boots, and serviceable gloves will add to the comfort of men and women who wish to ride horseback, tramp or climb. Bring your camera. Field glasses are useful.

**MAIL** Mail for persons traveling through the Parks should be addressed to the Lodge and Post Office at which it is ex-

pected they can be reached. The correct address of each follows:

Bryce Canyon National Park Lodge, Bryce Canyon Post Office, Utah.

Zion National Park Lodge, Zion National Park Post Office, Utah.

Grand Canyon Lodge—North Rim, Kaibab Forest Post Office, Arizona.

El Escalante Hotel, Cedar City, Utah.

**CURIO SHOPS** Shops selling magazines, cigars, cigarettes, camera supplies, pictures, confectionery, etc., are maintained at Zion, Grand Canyon, Bryce Canyon, Cedar Breaks and Kanab Lodge Centers.

**REGISTERED NURSES** The services of a registered nurse are available at the Lodges in each of the three National Parks.

**KODAK DEVELOPING AND PRINTING** At Zion, Grand Canyon and Bryce Canyon, film developing and printing service is offered at standard prices, but it is dependent on the current availability of labor and supplies. A limited supply of films is carried.

**BARBER SHOPS** Barber shop facilities are available at Bryce Canyon, Grand Canyon and Zion Lodge Centers.

**TELEGRAPH AND TELEPHONE** Service is available at all Lodge Centers, and at El Escalante Hotel, Cedar City.

*All color photographs are Kodachrome with the exception of the flower pictures on back cover and the lodge pictures on page 28 which are Agfacolor plates.*



*The Swimming Pool at Zion Lodge is Always Popular with the Guests*

# MAKE THE MOST OF YOUR VACATION

If it's to be a real vacation this year—and not just two weeks or so away from the job—then you'll want to eliminate all responsibility, all things that try your temper and tax your strength. In a word, you want to be off on a care-free pilgrimage.

## ESCORTED, ALL-EXPENSE TOURS

All-expense, personally escorted tour parties, jointly sponsored by the Chicago and North Western System and Union Pacific Railroad will be operated again this summer.

Originating in Chicago, parties are conducted through Zion, Bryce Canyon, Grand Canyon National Parks, Cedar Breaks National Monument and the Kaibab National Forest. They include sightseeing in Salt Lake City, Utah and Denver, Colorado. Combination tours of Yellowstone and the Southern Utah-Arizona Parks are also offered, in addition

to tours to Yellowstone exclusively; tours to Yellowstone which include sightseeing in Colorado; tours to Colorado exclusively, and tours to California which include Old Mexico, Yosemite National Park, Los Angeles, San Francisco and Las Vegas-Hoover Dam.

These all-expense tours offer an ideal vacation arrangement, since each party is accompanied by a courteous, well-informed escort who looks after all travel arrangements. They are a convenient "package" vacation, beginning the moment you step aboard a North Western train.

For ESCORTED, ALL-EXPENSE TOUR itineraries or reservations, address I. D. Kessler, manager, C&NW-Union Pacific, Department of Tours, 148 South Clark Street, Chicago 3, Illinois (Tel. DEarborn 2-2121, Ext. 565), or any Chicago and North Western representative.

# NORTH WESTERN REPRESENTATIVES

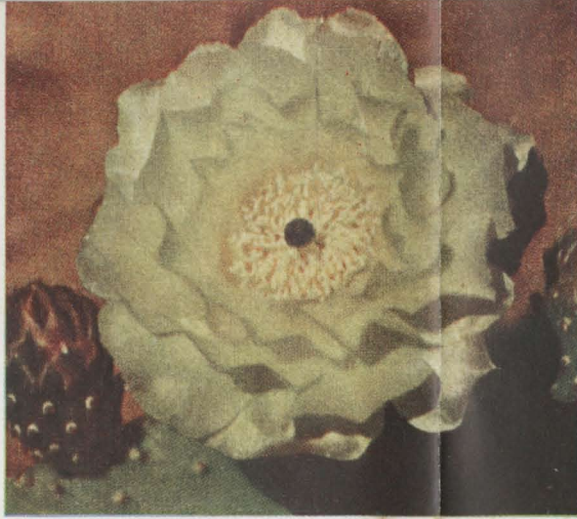
Chicago 3, Ill.	1011 Field Building, 140 South Clark Street.	D. G. Payne, Assistant General Passenger Agent
Chicago 6, Ill.	City Ticket Office, 148 South Clark Street.	L. J. Joswick, City Ticket Agent
Atlanta 3, Ga.	Passenger Station, 500 W. Madison Street.	J. A. Siupikowski, Term. Pass. & Ticket Agr.
Birmingham 3, Ala.	504 Volunteer Building, 66 Luckie St., N.W.	E. Post, General Agent
Boston 8, Mass.	201 Brown Mark Building.	C. P. Johnson, General Agent
Buffalo 3, N. Y.	212 Old South Building, 294 Washington Street.	M. J. Flanagan, General Agent
Casper, Wyo.	202 Elliott Square, 295 Main Street.	C. E. Williams, General Agent
Cedar Rapids, Iowa	Station	F. C. Jones, Division Freight and Passenger Agent
Cincinnati 2, Ohio	326 First Avenue, N. E.	W. F. Winkrantz, Division Freight and Passenger Agent
Cleveland 13, Ohio	202 Dixie Terminal Building, 49 East Fourth Street.	J. T. Hall, General Agent
Council Bluffs, Iowa	1106 Terminal Tower Building, 50 Public Square.	E. W. Ernst, General Agent
Dallas 1, Texas	Broadway Passenger Station, 11th and West Broadway.	H. F. Smith, City Agent
Denver 2, Colo.	725 Kirby Building, 1509 Main Street.	M. D. Spaulding, General Agent
Des Moines 9, Iowa	318 Des Moines Building, 17th and Locust Streets.	H. E. Bush, General Agent
Detroit 26, Mich.	602 Lafayette Building, 144 West Lafayette Boulevard.	C. R. Bair, General Agent
Duluth 2, Minn.	Lonsdale Building, 302 West Superior Street.	J. J. Perry, Asst. Gen. Freight and Passenger Agent
Eau Claire, Wis.	Station	R. J. MacCarthy, General Agent
Eugene, Ore.	208 Lumbermen's Bldg., 119 E. Broadway.	H. W. Johns, District Traffic Representative
Fargo, N. D.	400 First National Bank Building.	J. Krupich, General Agent
Great Falls, Mont.	817 First National Bank Building.	C. T. Spear, General Agent
Green Bay, Wis.	Station	F. B. Martin, Division Freight and Passenger Agent
Houston 2, Tex.	603 Bankers Mortgage Building, 708 Main Street.	C. F. Zadnichek, General Agent
Indianapolis 4, Ind.	315 Merchants Bank Building, 11 S. Meridian St.	R. L. Dickson, General Agent
Kansas City 6, Mo.	400 Railway Exchange Building, 705 Walnut Street.	D. D. Schuppener, General Agent
Lincoln 8, Neb.	Woods Brothers Building, 130 South 13th Street.	K. C. Niles, Traveling Agent
Los Angeles 14, Calif.	417 Associated Realty Building, 510 West Sixth Street.	N. D. Browne, General Western Agent
Madison 3, Wis.	201 South Blair Street.	J. W. Vilas, Division Freight and Passenger Agent
Milwaukee 3, Wis.	152 West Wisconsin Avenue.	W. H. Kreiling, General Freight and Passenger Agent
Minneapolis 2, Minn.	146 West Wisconsin Ave.	E. D. Poulson, General Agent Passenger Department
New Orleans 12, La.	Roonke Building, 701 Marquette Avenue at 7th.	E. M. Petachl, Asst. General Passenger Agent
New York 18, N. Y.	1018 Hibernia Bank Building, 812 Gravier Street.	S. L. Howells, General Agent
Oakland 12, Calif.	Room 322, 500 Fifth Avenue.	C. A. Miller, Eastern Traffic Manager
Omaha 2, Neb.	513 Central Bank Building, 436 - 14th Street.	M. R. Kielgas, General Eastern Passenger Agent
Peoria 2, Ill.	814 Brandeis Theatre Building.	H. Derry, District Traffic Representative
Philadelphia 22, Pa.	213 Jefferson Building, 331 Fulton St.	G. A. Langworthy, Traffic Manager
Pittsburgh 22, Pa.	1602 Girard Trust Co. Building, 1400 South Penn Square.	T. A. Carney, Division Freight and Passenger Agent
Portland 5, Ore.	212 Oliver Building, 535 Smithfield Street.	B. A. Stokke, General Agent
Racine, Wis.	372 Pittcock Block, 921 S. W. Washington Street.	D. C. Wood, General Agent
Rapid City, S. D.	Station	J. D. Ritchie, General Agent
Rochester, Minn.	The Kahler	G. W. Carnell, Division Freight and Passenger Agent
Rockford, Ill.	505 South Church Street.	H. J. Heymann, Division Freight and Passenger Agent
Sacramento, Calif.	623 Torrey Bldg., 1107 9th Street.	O. H. Romadka, General Agent Passenger Department
St. Louis 2, Mo.	903 Boatmen's Bank Building, 314 North Broadway.	R. E. Williams, General Agent
St. Paul 2, Minn.	363 St. Peter Street, Hotel St. Paul.	M. Dunning, District Traffic Representative
Salt Lake City 1, Utah	320 Union Pacific Building, 19 South Main Street.	I. S. Olsen, Traffic Manager
San Francisco 5, Calif.	301 Monadnock Building, 681 Market Street.	E. C. Crow, General Agent
Seattle 1, Wash.	515 White Building, 4th Avenue and Union Street.	R. F. Wendt, General Agent Passenger Department
Sioux City 9, Iowa	407 Commerce Bldg., 520 Grand Street.	W. W. Selts, General Agent
Sioux Falls, S. D.	421 East Eighth Street.	F. T. Lewis, Western Traffic Manager
Spokane 8, Wash.	1116 Old National Bank Building.	W. A. Benjamin, General Agent Passenger Department
Tacoma 1, Wash.	P. O. Box 385.	J. F. McNamara, General Agent
Toronto 1, Ont.	69 Yonge St.	A. W. Blake, General Agent
Tulsa 3, Okla.	204 Thompson Building.	C. T. McAdam, General Agent
Vancouver, B. C.	201 Stock Exchange Bldg., 475 Howe St., N.W.	D. Donovan, Traveling Agent
Washington 5, D. C.	912 Woodward Building, 15th and H Streets, N.W.	H. L. Davis, General Agent
Winnipeg, Man.	408 Childs Bldg., 211 Portage Ave.	G. S. Donaldson, General Agent
Winona, Minn.	54 Cent Street.	C. W. Killam, General Agent
Winston-Salem 3, N. C.	515 Reynolds Building.	H. C. Langerde, General Agent
		H. C. Carmichael, General Agent
		H. Eklund, Division Freight and Passenger Agent
		C. W. Hancock, General Agent

R. O. SMALL  
Asst. Vice President - Traffic  
H. C. DUVALL  
Passenger Traffic Manager

F. G. FITZ-PATRICK  
Vice President - Traffic  
E. C. NICKERSON  
General Traffic Manager  
J. R. BRENNAN  
Asst. Passenger Traffic Manager

T. L. NORTON  
Asst. General Traffic Manager  
N. H. JONES  
General Passenger Agent

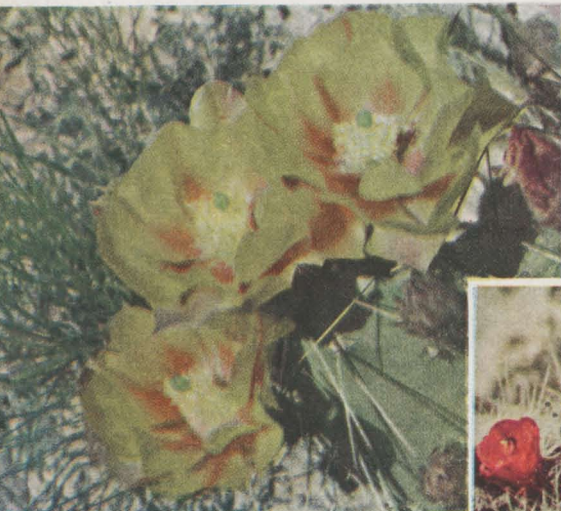
Cactus  
*Opuntia rhodantha*



Beavertail Cactus  
*Opuntia basilaris*



Some of the  
Colorful plant life  
in  
Zion National Park



Dollar Cactus  
*Opuntia chlorotica*



Purple Torch Cactus  
*Echinocereus engelmannii*

Strawberry Cactus  
*Echinocereus coccineus*