



PUBLISHED BY
E. L. PARDEE
PASSENGER TRAFFIC MANAGER
CHICAGO AND NORTH WESTERN SYSTEM
CHICAGO 6, ILLINOIS

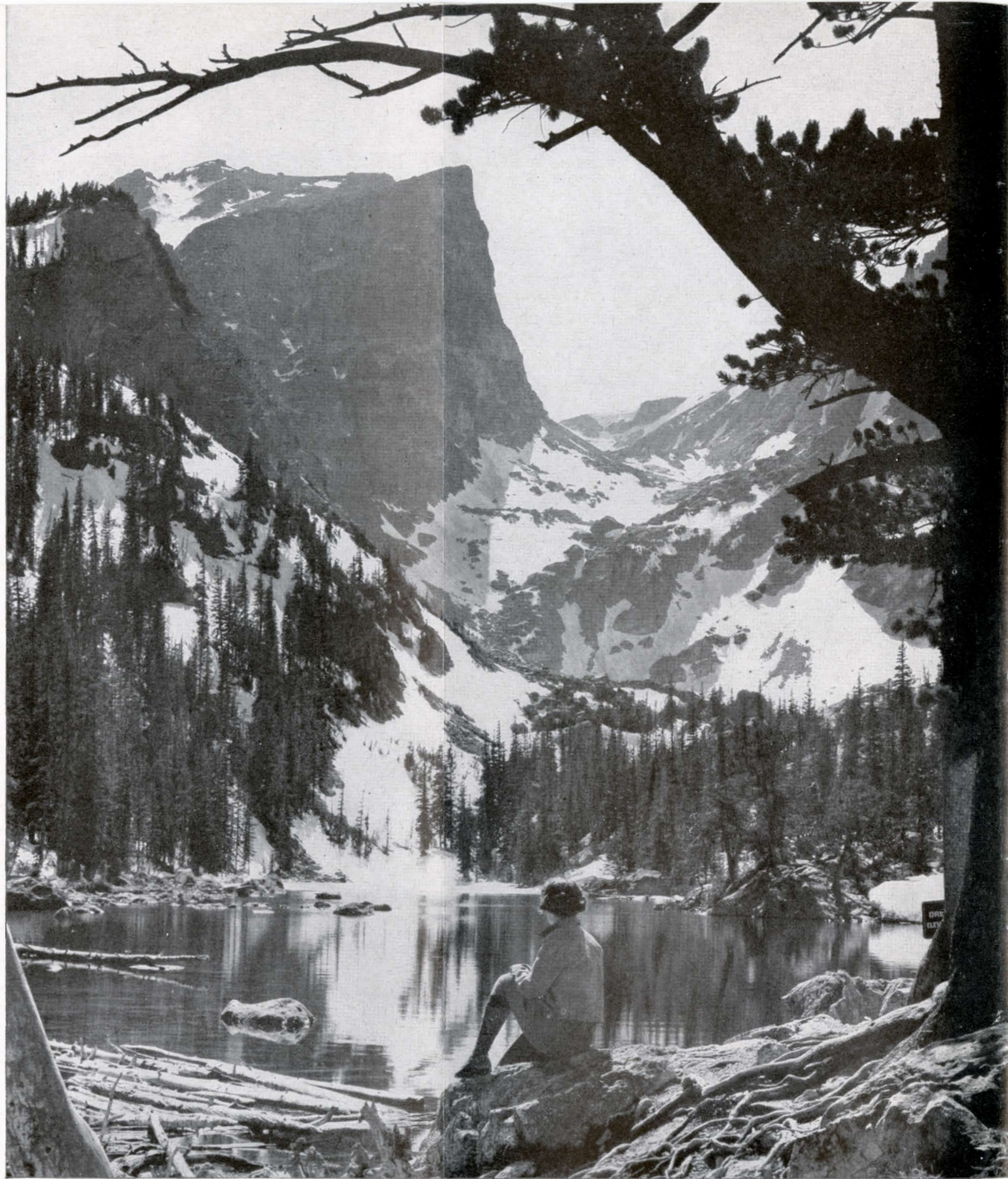
The east face of Longs Peak drops precipitously from the summit, 14,255 feet above sea level, to the icy waters of Chasm Lake, more than 2000 feet below.

**A MESSAGE FROM THE LATE ARNO B. CAMMERER,
WHILE DIRECTOR, NATIONAL PARK SERVICE,
DEPARTMENT OF THE INTERIOR, WASHINGTON, D. C.**

"People use all methods of transportation to get to the national parks, but none has served us longer or better than the railroads. • They have always offered not only special rates but special personal service to park visitors. They have cooperated with the Government in every way possible to tell of the opportunities for healthful, purposeful vacations afforded by the national park system. • The Secretary of the Interior has announced that he and Park Service officials are fully aware of the new responsibilities to the public created by changed conditions here and abroad, and that our facilities will be extended in every possible way to meet public demands. • To anyone planning a national park trip, I want to say emphatically that there is no more restful way to go than by train, and the railroads are offering more for less money this year than ever. A train traveler nowadays is utterly free of responsibility. Visit your nearest railroad representative, and if you have only a hazy idea of where you want to go and what you want to see, he has all the information at his fingertips. If you want to travel alone, he will prepare a brief itinerary for you so complete that all you have to do is be sure not to lose it. If you like meeting new people, you can join a tour party in charge of a representative who attends to the baggage, hotel arrangements, and other travel chores. • How often I hear people planning a journey say, 'Oh, I am tired, now, but what a wonderful rest I am going to have when I get on the train?'"



In Rocky Mountain National Park, a land of far-flung vistas.



Dream Lake is only one of the enchanting lakes that glisten like jewels in Rocky Mountain National Park.

Colorado

MOUNTAIN PLAYGROUNDS

"Let's go to Colorado for our vacation."

What an excellent suggestion! . . . and it's a suggestion that you would hear made—could you but do a little eavesdropping—in hundreds of thousands of homes every year at the season when the family gets together to do a little serious figuring about the annual problem of "where to go." • It is probable that you would hear Colorado mentioned in those family conferences oftener and with more longing than any other region, for the mountain playground of Colorado has a place in the hearts of Americans shared by no other vacationland. • *And rightly so!* It is the vacationland for all. Every one can enjoy its sunshine and stimulating air, its romance and glamorous activities, its soul-satisfying grandeur . . . and enjoy them simply, in his or her own way and at very moderate cost. • And what better time to enjoy Colorado than in the summer? Rail fares and other travel costs are low; hotels and resorts offer accommodations at reasonable cost. Colorado is easy to reach. From all points of the compass, fine, fast, North Western-Union Pacific trains with complete air-conditioned comfort, speed to Denver, the beautiful, mile-high capital of Colorful Colorado. The two superlative *Streamliners, The City of Denver*, make the run daily between Chicago and Denver in only 16 hours. You leave at night and in the morning you are there—you can enjoy every precious day of your vacation in this glorious mountain country.

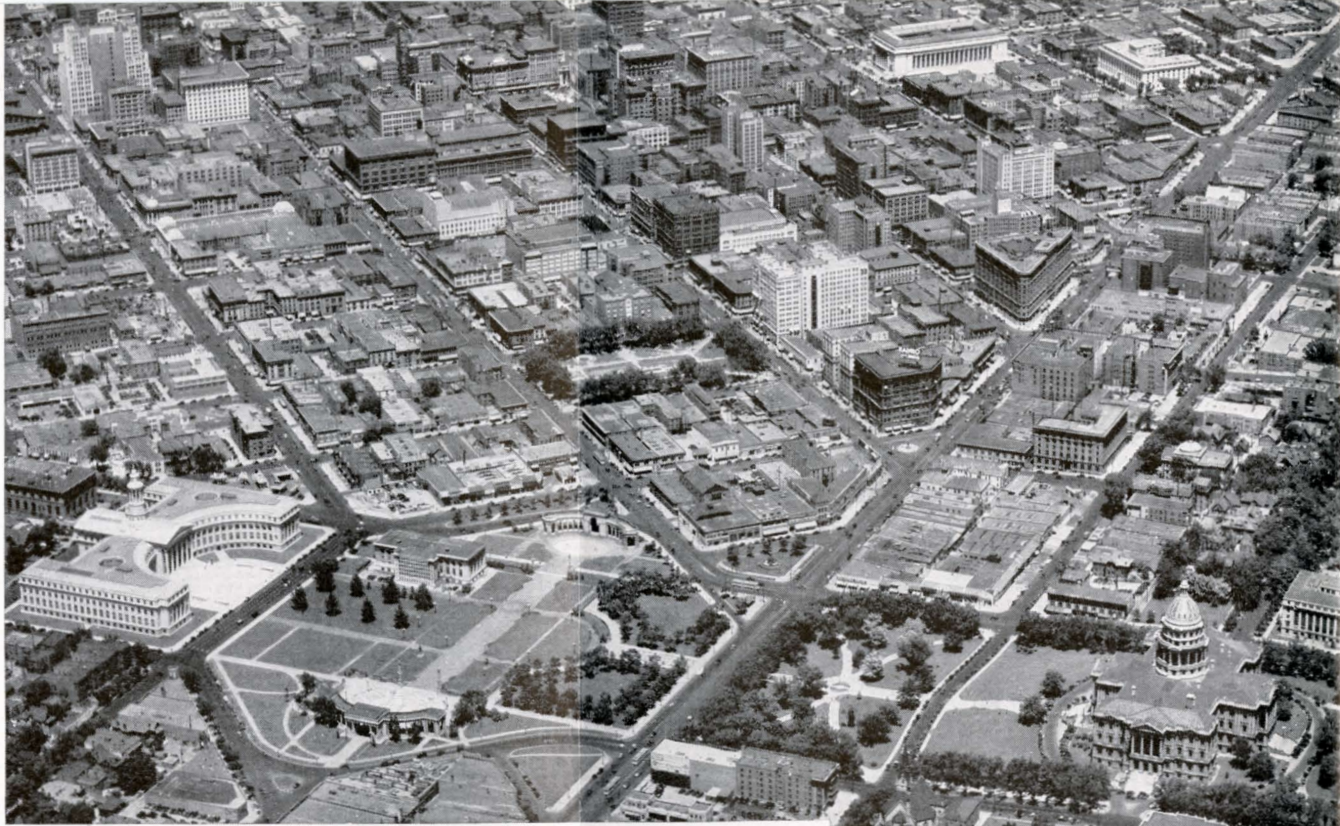
Colorado . . . LAND OF MOUNTAINS

. . . is especially favored as a mountain retreat. It is the most mountainous state in the country. For the most part it is a vast area of mountains,

rising like billows in a mighty tempest. Here are thousands of peaks that rise to a height of more than two miles and here are more than two-thirds of the nation's really high mountains—those rising above 14,000 feet • Scattered among the mountains are vast stretches of magnificent evergreen forests and thousands of tiny, exquisitely lovely lakes and countless tumbling, crystal-clear streams. *Can you imagine a more perfect setting for a vacation?*

Colorado . . . LAND OF THRILLING VACATIONS . . .

Colorado's white capped peaks, deep green forests, turquoise lakes and ultramarine skies form an ideal background for a vacation . . . and the bracing mountain air and sparkling sunshine complete Colorado's magic formula. No matter where you go, or what you do, in the many resort regions of the state you will find the magic formula operating potently for your benefit. After your days of vigorous, wholesome recreation you will be ready to sleep like a child . . . and after a sleep in the cool, pine-scented forests of the Rockies you will find yourself in the morning as fresh and joyous as a child. • "I feel like I could take on Longs Peak this morning," you may find yourself boasting; and while it is rather an ambitious climb to its 14,255 foot summit, it is not impossible and you may be able to make it before you leave. You can start out with a 10,000 foot peak and gradually get toughened for the big ones. Mountain climbing is one of the most exhilarating sports in the world. Aside from the splendid exercise and the justifiable pride you may take in conquering one of the giants of the Rockies you are further reward-



Denver, the handsome mile-high capital of Colorado, from the air.



Above—City and County Building, Denver.

Right—Thatcher Memorial in City Park.



ed by the view from the top . . . and when you look out over an immense stretch of lofty peaks, and the pine forest at your feet looks like a carpet of grass and a hundred miles away in the misty blue fringe of the horizon are the tiny specks that you know are towns and cities, then something inside you expands. It is a glorious and an ennobling experience. • Of course, you don't have to walk if you want to get to the top of a high mountain. There is a cog railroad to the top of Pikes Peak and motor roads up both Mt. Evans and Pikes Peak—each more than 14,000 feet high. Many peaks can be ascended almost to the summit on horseback, and there is certainly no more delightful sport known than sitting astride a good trail pony winding his way leisurely up over a switch-back trail. What an opportunity to see the beauty of mountain and forest intimately!

- Saddle trips to famous beauty spots are among the most popular sports in Colorado. You don't need to be an experienced rider either. Western saddles are easy and safe and western trail ponies are dependable. It won't take you long to master the art, and then you will wonder how you ever thought other sports were fun.
- There are plenty of other sports, too, that *are* fun in Colorado. Fishing is one of them. Mountain, Rainbow and Cutthroat trout abound in great numbers and in some places you can depend on catching your legal limit almost every time you fish. All streams and lakes are stocked by the government. Information may be obtained and tackle rented at all resorts.
- Golfing may be enjoyed many places in the state and tennis, too. Sailing, outboard racing, rowing and other forms of boating may be indulged in, particularly on Grand Lake. But of all activities to be enjoyed in Colorado, the greatest is sight-seeing. That is one thing you do all the time, almost every minute of every day. It is one thing you never get away from . . . nor would you if you could. The beauty

of these mountains is something you will never tire of, and, if you are interested in nature study or geology, painting or photography, you will find an inexhaustible field for study and inspiration. And last, but not least, Colorado is ideal for those whose primary vacation purpose is to rest and get away from the cares of everyday life. Here one can loaf to his heart's content, absorb the glorious mountain sunshine and air, benefit by the stimulating change of scene, and return home with new vitality and keenness.

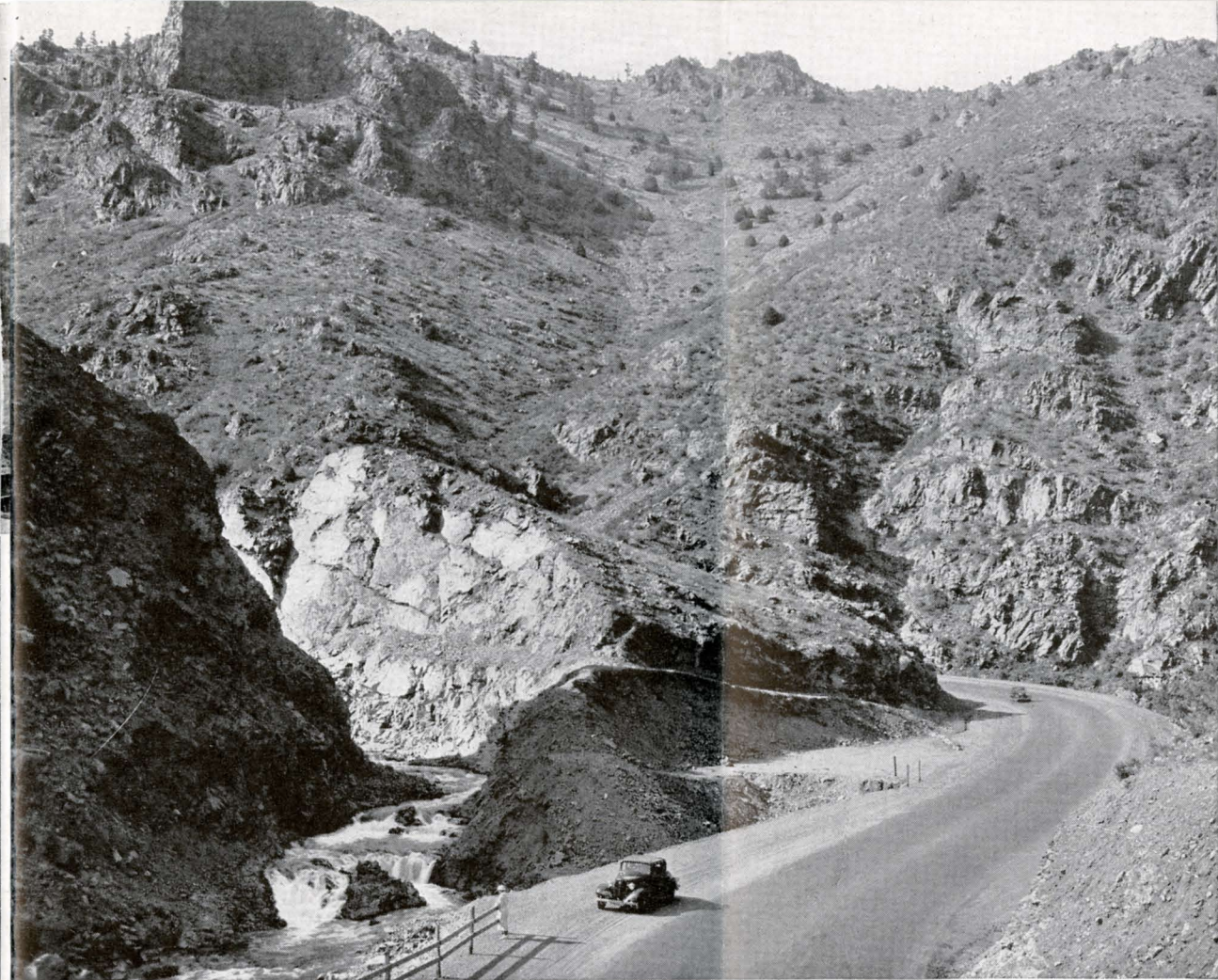
DENVER . . . To all this vast vacation empire Denver is the gateway and the capital. • Here you get your first taste of the West—not the old West of frontier days for this has gone and you will see its remains only in a few outposts—but of the new West—progressive, modern and friendly—the West that believes in beautiful, well planned cities with gracefully landscaped homes. Perhaps no other large city in America is more spectacularly situated than Denver. Just one mile above sea level and sheltered by a wall of mountains, it has a delightful climate. In summer it is bright, dry and pleasantly cool and in winter it is surprisingly mild. • Denver is a mountain city. Although it is built on a plain with the foothills a good ten miles away, you feel that it is definitely a mountain city. • The streets are laid out in such a way that no matter where you are you can see mountains in at least one direction. A good hundred mile stretch can be viewed—from Pikes Peak on the south to Longs Peak on the north with Mt. Evans, Torreys Peak, Grays Peak, Mt. Bierstadt and many others visible from the city. • It is an intensely moving experience to be walking along those streets, window-shopping perhaps, or preoccupied with the ordinary business of the day, and then suddenly look up and see that far-off wall of gray, topped with



Along the Red Rocks Drive in Denver Mountain Parks.

white, standing there with the silent majesty of the ages. Instantly you forget everything but those mountains. You'll always remember it. • Hidden in the hollows between those giant peaks lie the verdant little valleys, sparkling lakes and fragrant forests that go to make up the finest mountain vacationlands in America. Almost all of these resort centers are within a few hours' drive from the heart of Denver. That fact makes the city enormously popular as a summer vacation center. Not only is it the focal point for those

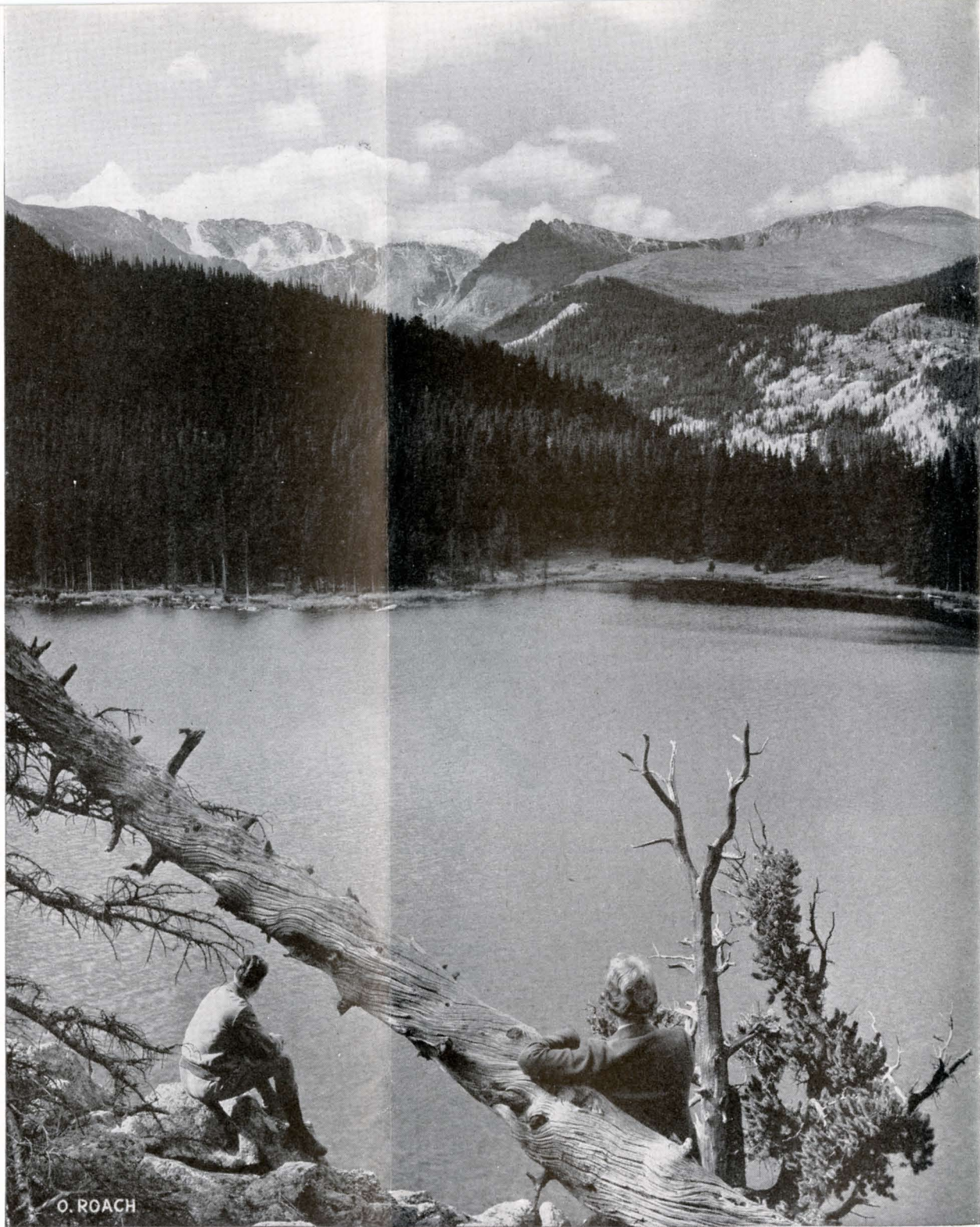
bound for Rocky Mountain National Park, Grand Lake, Colorado Springs and the San Isabel National Forest, but it is a favored city for summer conventions . . . and, after all, what other large city is so ideally situated? The summer climate is unbeatable, the scenery is most inspiring, and even on a closely packed business visit to the city one can almost always find a few hours for a short trip up into the mountains. Sightseeing buses and cars leave from convenient downtown locations several times daily.



Scenes like this are common along the splendid highways in the Denver Mountain Parks.

DENVER MOUNTAIN PARKS... The simplest and easiest of all these delightful excursions out of Denver is the 65-mile drive out through the foothills of the Rockies to a series of parks or preserves owned by the City of Denver. Resorts, camps and lodges are tucked away in the pockets of the mountains all through the Parks. You could spend a vacation here and scarcely be aware that you were so near the city. In Genesee Park you would see elk, deer, mountain sheep and buffalo roaming at will on a fine 800 acre pre-

serve. • The climax of your trip is a visit to the top of Lookout Mountain, where "Buffalo Bill" is buried. As you stand on its 7,500 foot summit and look out across the immense stretches of plains to the East you feel that it is a fitting and truly noble resting place for this greatest of frontier scouts and Indian fighters. There is a fine museum near the grave and here you will find many old relics to stir the imagination with thoughts of buffalo hunts and Indian encounters in the days when the West was really "wild." •



O. ROACH

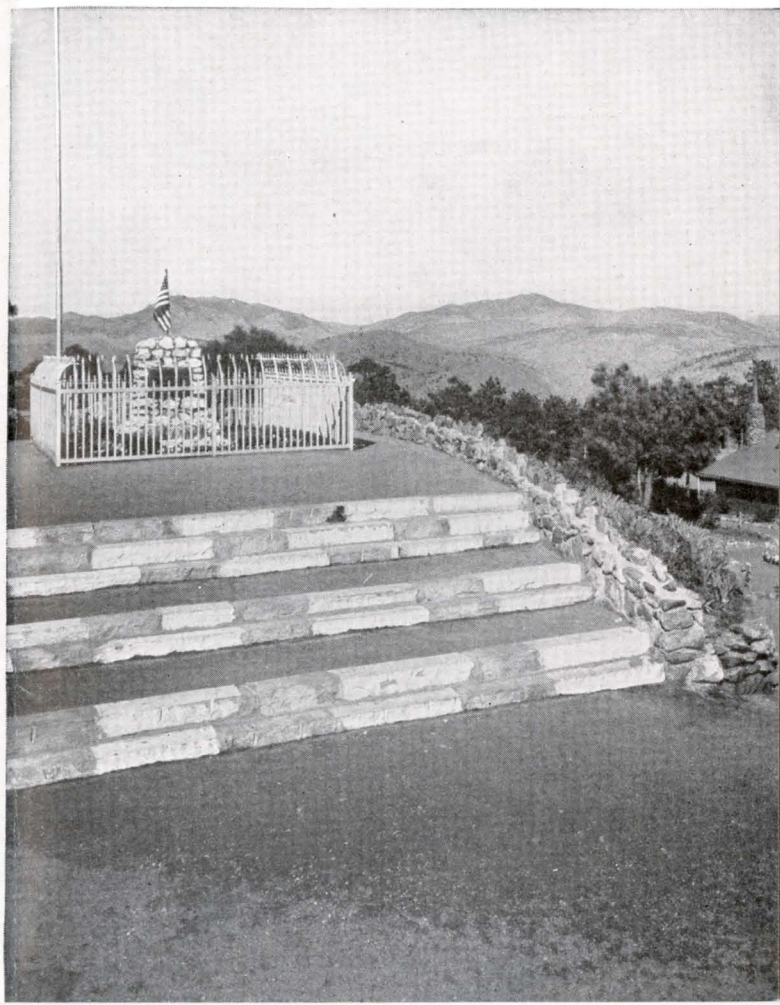
Auto roads past Echo Lake lead up to the top of lovely Mt. Evans.

From Lookout Mountain you return to Denver via Bergen Park, the magnificent gorge of Bear Creek Canyon and the impressive Park of the Red Rocks.

MT. EVANS . . . The trip to Mt. Evans and return is probably the most spectacular one-day trip in America. You leave Denver in the morning and drive up to the top of Lookout Mountain. From there you swing down into a beautiful green valley of stately pine forests dotted with copses of lovely, pale green aspens. Presently you find yourself in a long narrow valley studded with weather beaten structures penetrating the sides of the hills and you are surprised to hear that these are gold and silver mines, most of them long ago abandoned. Soon you are at Idaho Springs where in 1859 a deposit of gold was discovered that started Colorado's first gold rush and skyrocketed the population of the state from a handful of fur traders to more than ten thousand miners in a year. Now Idaho Springs is a thriving health resort. • From Idaho Springs you wind upward, higher and higher into the mountains. Oddly enough, you scarcely seem to be in the mountains at all. The white heads of the great peaks that line the Continental Divide momentarily are obscured by the closer but less lofty mountains. Then suddenly you round a bend and there they are before you in all their glory. At your feet lies beautiful Echo Lake and beyond it is one snow crowned giant after another. • From Echo Lake your road slowly ascends up past the timberline, past Summit Lake and Chicago Lake, up to the very top of Mt. Evans, 14,260 feet above sea level. Now you *are* on top of the world. Your view from here extends well over a hundred miles in every direction, and takes in all the principal

peaks in Colorado. What a sublime scene! You wonder if there is another like it in all the world.

• You return to Denver by way of Squaw Pass, with the great peaks of the Continental Divide in view for many miles. Then you descend through as fine a forest as you will see in many a day . . . down, down, down into Bear Creek Canyon with its great rocky walls towering above you . . . then you pause to inspect the massive monoliths of deep red sandstone in the Park of the Red Rocks . . . and on to Denver, arriving in late afternoon. A never-to-be-forgotten trip.



Grave of Buffalo Bill on Lookout Mountain.

The gorge of the Big Thompson River, one of the supreme scenic spectacles of the circle tour by motor from Denver.



ROCKY MOUNTAIN NATIONAL PARK

Rocky Mountain National Park is the wildest and ruggedest section of the Rocky Mountains—substantially the whole of its 400 square miles are more than 9,000 feet above sea level. The Continental Divide runs through the Park. On the eastern slope of the Divide there is a group of resorts and camps scattered about the beautiful valley of Estes Park and in the valley between the Twin Sisters and Longs Peak. West of the Divide you will find Grand Lake, the mecca of vacationists. But the resorts are not confined to these regions. Every canyon has its secluded lodge tucked away in its depths, every river course has one or more along its banks. As a result you have every opportunity of finding exactly the kind of place you want—from the standpoint of both price and location. At most of them you will find saddle horses, guides, fishing equipment and a staff prepared to give you information on how best to see the Park.

THROUGH BIG THOMPSON CANYON ...North St. Vrain...South St. Vrain

Enroute to Rocky Mountain National Park you may go by train as far as Boulder, Ft. Collins or Greeley, but Denver is the chief gateway, and from there regular daily bus service is maintained to Estes Park throughout the season and this is the approach most frequently chosen. • You leave Denver in the morning and drive north across the fertile, irrigated plains that produce so much of Colorado's market garden supplies and through the neat, prosperous looking little towns of Longmont, Berthoud and Loveland—a 50 mile drive through beautiful country, with the mountains west of you and the snow-capped Continental Divide in view all the way. At Loveland you turn west. Soon you reach the

Big Thompson River and enter Big Thompson Canyon. • Your ride through the Canyon will prove one of the most memorable features of your whole visit to the Park. For sixteen miles you drive between rugged walls that sometimes tower a good 1,200 feet above you. Beside you, most of the way, the river is a raging, foaming torrent . . . and no wonder, for it descends 3,000 feet in only 16 miles. Much of the valley is so narrow that the road had to be blasted out of the canyon walls. But there are stretches where the canyon does not crowd the river quite so closely and here there is room for cabins, lodges and a stand of trees. • In these little glades and glens of Big Thompson Canyon you will see some of the loveliest wild flowers you ever laid your eyes on. Even people who are not ordinarily conscious of flowers notice the many wild roses and the dainty columbines, with the subtlest, most delicately colored petals imaginable. Strange that you should find such fragile blossoms here in this granite glen . . . it's one of the things you'll never forget.

THE CIRCLE TOUR . . .

of Rocky Mountain Park, including Big Thompson Canyon, Estes Park, Horseshoe Park, Hidden Valley, Fall River Pass, Milner Pass, Grand Lake, Berthoud Pass and Idaho Springs is one of the most delightful in the West. This may be taken as a two day tour from Denver, stopping for the night at Estes Park, but the scenery is so incomparably grand and the opportunities for sport so unusual that almost everybody chooses to linger for a few days at the very least . . . and many tarry all summer long. • There is probably no other one region in the country where the tarrying is so delightful, and the leave-taking so regretted as here at Rocky Mountain National Park.



Longs Peak is the central landmark of the entire Rocky Mountain National Park region.

ESTES PARK . . . Coming out of Big Thompson Canyon a magnificent panorama opens up before you—a lovely alpine type of valley, ringed by a wall of lofty mountains and in the center is Longs Peak, the king of the range and one of the noblest peaks in the United States. • This valley was a great place for big game back in the seventies and eighties and has always been intensely popular with sportsmen and mountaineers but was formerly quite inaccessible. But the motor roads through Big Thompson and St. Vrain Canyons have made it quite accessible. When Rocky Mountain National Park was set aside by the government in 1915, most of Estes Park was included within its boundaries, though the little village of Estes Park is still on the out-

side. • Estes Park is an ideal base of operation from which to see the eastern side of Rocky Mountain Park. Most of the lodges, camps, cabins and hotels are centrally enough located so that you can easily make saddle or hiking trips . . . to Longs Peak and to Chasm Lake . . . to the top of The Twin Sisters peaks . . . Moraine Park . . . to the Wild Basin for a look at Bear Lake, unforgettably lovely Dream Lake, Tyndall Glacier and Flat Top Mountain . . . to Horseshoe Park . . . to Lawn Lake, Fern Lake, Odessa Lake and many other beauty spots. And aside from these trips there is excellent fishing, tennis, golf and many other sports. In the village of Estes Park there are stores, churches and a movie. Dancing and other entertainment is featured.



Grand Lake, head of the mighty Colorado River, nestles in a basin rimmed by lofty mountains.

ACROSS THE DIVIDE TO GRAND LAKE . . .

From Estes Park your circle tour route takes you through Hidden Valley with its scores of beaver dams and its green meadows . . . up the steep slopes toward the Divide. Majestic peaks come into view—Mt. Chapin, Chiquita, Ypsilon, Fairchild and Hague's Peak. As you travel over Trail Ridge Road to Fall River Pass you catch a glimpse of Iceberg Lake, (12,185 feet) never, even in summer, completely free from floating ice.

• Timberline is a fascinating sight. As you come up from the thickly forested valleys you quickly take leave of the aspens, oaks and maples and you find the pines getting scarcer and scrawnier up toward 10,000 feet. Weird, twisted, gnarled old

dwarfs is all they are at 11,000 feet. They have had a grim struggle with wind and snow. But strangely enough you will find grass and flowers growing far above timberline . . . and the grass is the greenest and the flowers the tiniest and most intensely colored blossoms imaginable. What a contrast, to find the perfection of exquisite daintiness amid the most massive and rugged of mountains. • The panorama from the Continental Divide is superb . . . the Medicine Bow and the Never Summer ranges come into view in the west and below you lies the heavily forested Cache La Poudre region. Descending from Milner Pass your road winds down through cool green forests of lodge pole pines to picturesque Grand Lake, Colorado. • Grand Lake itself is not actually in Rocky Mountain Park. Al-



Lovely Loch Vale in Rocky Mountain National Park.

most all of its shoreline is privately owned. This lake, lying in the lap of the mountains, is the largest in Colorado and is one of the most popular recreational spots in the West. The fishing in the lake, and particularly in nearby streams, is almost unbeatable. There is also swimming, rowing, outboard racing and every year in August

there are sailing races for the Lipton Cup. Many interesting saddle trips may be made from Grand Lake. Yes, there are many outdoor activities here . . . and dancing and other entertainment at night. • Leaving Grand Lake you follow the Colorado River—it is only a tiny stream here—to the town of Granby. This is real western ranch

country and you will love it. Leaving Granby you again climb the mountains and recross the Continental Divide, this time via Berthoud Pass. From here you descend to Idaho Springs and return to Denver by way of Lookout Mountain, Bergen Park, Bear Creek Canyon and the Park of the Red Rocks . . . thus completing one of the outstanding scenic tours of the West. • The map on page 30 shows the route of the tour, 240 miles in all.

BOULDER—FORT COLLINS—GREELEY

. . . Northwest from Denver 29 miles is the little city of Boulder, a popular starting place for trips to glaciers and peaks in and near Rocky Mountain National Park. The University of Colorado is here, its campus overhung by the Rockies. Each year the famous Colorado Chautauqua holds its sessions in Boulder during June, July and August. A cottage colony with a central dining hall

is on the grounds and furnishes accommodations to large numbers of visitors during the summer months. • Only 27 miles from Denver is the pretty town of Eldorado Springs, so named because of its hot and cold springs. High mountains loom above the springs, and trails and highways lead into their depths. • North of Denver are several other charming little cities, among them Greeley and Fort Collins. Both are on motor bus routes to Rocky Mountain National Park. • Greeley, seat of the Colorado State College of Education, was settled by New England colonists under the patronage of Horace Greeley in 1870, about the time Greeley's slogan, "Go West, young man," was becoming famous. Fort Collins, home of the Colorado State College of Agriculture and Mechanic Arts, is on the Cache La Poudre River and is a gateway to a number of excellent resorts which are tucked away in the mountain recesses for fifty miles or more up the river.

Sparkling, glacier-fed little rivers tumble in their gravelly beds.

"Here and there a lusty trout, and here and there a grayling."





Pikes Peak, stern, "unscalable" landmark of the pioneers, now carries both railway and highway to its top.

COLORADO SPRINGS AND PIKES PEAK

The chief reason for going to Colorado Springs is to see Pikes Peak, but there are other rewards. You find an attractive modern city, with a climate that is sunny, cool and dry, an ideal place to stay while you take jaunts here and there in the whole Pikes Peak region. Colorado Springs is 75 miles south of Denver, from whence it may be reached by rail in about two hours. • There will be no

trouble in finding pleasant accommodations at suitable prices while you are in Colorado Springs, for the Chamber of Commerce has a free information bureau to assist you. • There are other trips besides the chief one, to the summit of Pikes Peak. For example, Cheyenne Mountain, topped by an Indian pueblo, with a herd of elk and deer along the way, and dramatic views on all sides;

South Cheyenne Canyon with beautiful Seven Falls; and many other canyons, drives and trails.

- Pikes Peak, soaring 14,000 feet into the air, is the most frequently climbed mountain in the world. Rising, as it does, abruptly from the plains, it offers a most excellent vantage point from which to view the surrounding grandeur.

- The trip to Pikes Peak itself requires six miles by street car, motor or bus to Manitou Springs and then to the top by the Cog Road Stream Lined Trains, burros, or automobile. The little town of Manitou Springs is a noted watering place whose springs were known to the early Indians for their curative properties.

Beautiful Seven Falls, one of nature's most exquisite show places in the entire Pikes Peak Region.

CAVE OF THE WINDS . . . Here is a geological wonder which is one of the outstanding scenic attractions of the Pikes Peak region. It is only two miles from the town clock in Manitou Springs and affords a thrilling side trip through the wonderful Williams Canyon. In a trip through Cave of the Winds you are taken through a mile of underground passageways with competent and well informed guides who give descriptive talks on the geologic formations. The return trip from the cave presents an inspiring view of Manitou Springs and the surrounding mountains.

In the wonderful Cave of the Winds near Manitou Springs, Colorado.





The snow-crested Sangre de Cristo Range is reflected in the placid waters of DeWeese Lake in the San Isabel National Forest Region.

COLORADO NATIONAL FORESTS...

The best hunting and fishing in Colorado is found within the state's National Forests. They are served by several hundred miles of motor roads, but the most picturesque parts are reached on foot or on horseback by well-marked trails. Nearly all of Colorado's 52 peaks above 14,000 feet in altitude lie within their boundaries. • Locations for permanent summer homes can be rented for small sums, and camping is very popular. Rangers and other officers gladly furnish service regarding routes, camping grounds, fishing and other matters.

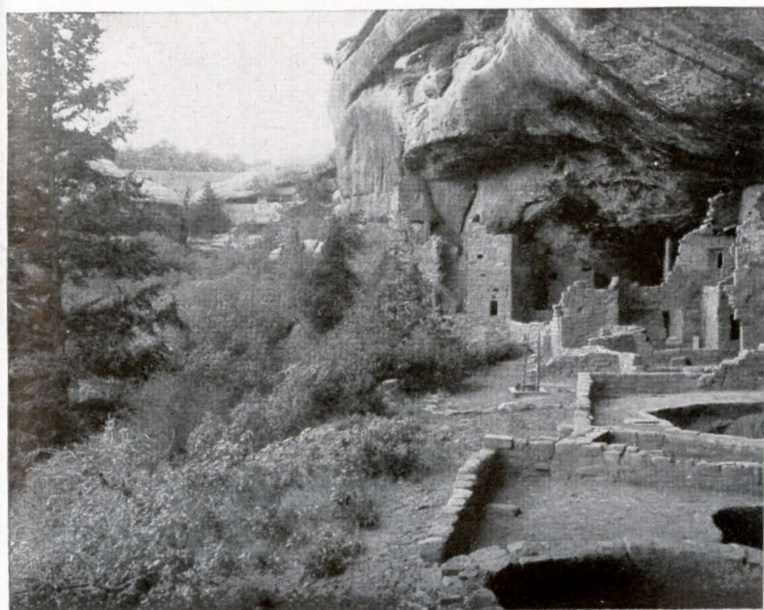
ROOSEVELT (Colorado) FOREST

... Within easy reach of Denver are three of Colorado's great National Forests, the Roosevelt (Colorado), the Arapahoe and the Pike. The largest in extent is the Roosevelt (until recently known as the Colorado). It covers most of the area east, northeast and south of the Rocky Mountain National Park, being approximately 25 miles from northern to southern limits. • One of the alluring features of the Roosevelt Forest are the glaciers, which are still carving and grinding away at the landscape as they did thousands of years ago. Most of these large glaciers lie west of Boulder. The Arapahoe Glacier, the largest in the Colorado Rockies, is the property of the city of Boulder and the source of her water supply. Most of the glaciers within the boundaries of the Roosevelt Forest are accessible by U. S. Forest Trails and offer entertaining side trips. • Any number of interesting trips, either afoot or on horseback, may be made into the high country along the Continental Divide and within the Forest region. There are numerous and inexpensive resorts west and northwest of Boulder where you


can make your headquarters. • Boulder can be reached any day by train or motor bus. From here automobile or hiking trips can be made into the glacier region with the Colorado Mountain Club or the Rocky Mountain Climbers' Club. • A network of trails covers the Forest region, any one of which will take you to tiny lakes and rivers that nestle at the foot of great peaks. There are any number of peaks in this area that soar more than 10,000 feet to the sky and from whose slopes you may obtain sweeping views of the enchanting scenery at your feet. • There is a variety of tours from Denver making stops in Boulder and at mountain resorts that may be arranged on application—any one a delightful experience.

SAN ISABEL NATIONAL FOREST

... Some of the finest and most diversified scenery in the Rocky Mountains is to be found in the San Isabel National Forest, lying in the heart of the picturesque Sangre de Cristo Range, mountains of blood-red hue. There are hundreds of towering peaks in this region, some soaring to 14,000 feet. The range itself has been pronounced the longest, highest, straightest and most rugged



Ancient Cliff Dwellings in Mesa Verde National Park, Colorado.



And in winter
Colorado's ex-
cellent skiing
terrain lures the
winter sports
enthusiast.

single line range in the world. In the San Isabel Forest region you will encounter a variety of scenery that takes you from the arctic to the tropics; the Huerfano Glacier, the Rockies' most southern glacier; the twin Spanish peaks, first Rockies seen by white men; gigantic and colorful stone-walls; fresh water lakes without outlet or inlet; deep bottomless lakes, a disappearing river; waterfalls of great height; hot springs; weird and mysterious Marble Cave of unknown depth; Royal Arch, a huge natural bridge; prehistoric Indian hieroglyphics on cliff walls; and great stretches of verdant forests, in which there is a teeming bird and animal life. San Isabel Forest lies southwest of Pueblo, a thriving industrial city with beautiful homes, civic buildings and churches.

MESA VERDE NATIONAL PARK ...

Mesa Verde ("green table," so named for its vegetation) is alone well worth a journey to Colo-

rado. Here, in ghostly splendor are the palaces of an ancient race that came from no one knows where, and departed—no one knows when. In the recesses of canyon walls, entire villages may be seen. They are remarkably well preserved. On the plateaus, you may view magnificent ruins of a forgotten civilization.

MEDICINE BOW NATIONAL FOREST

The Snowy Range Country

In southern Wyoming, resting on the northern Colorado boundary, Medicine Bow National Forest, one of the largest of our National forests, is in two divisions, the eastern division bisected north and south by the Medicine Bow range of mountains and the western by the Continental Divide, both extensions of the mighty Colorado ranges immediately south. The eastern, or Snowy Range Division, being more easily accessible, is the more popular and is best reached by Colorado visitors as well as by transcontinental travelers

Vista of the Snowy Range.



by a short side trip from Laramie, Wyoming on the main line of the Union Pacific. Nine miles by train over the L. N. P. & W. Ry. from Laramie brings one to Centennial, a typical Wyoming mountain village, whence it is only a short ride by motor or horseback to the heart of the beautiful Snowy Range country with its hundreds of beautiful glacial lakes, foaming streams and dense evergreen forests, all dominated by the splendid Snowy Range which is topped by Medicine Bow Peak 12,005 feet and the view from which is incomparable. For miles snowclad peaks vie in height and beauty with Medicine Bow itself. The peak is accessible by foot and horse trails. • The name Medicine Bow, according to tradition, is derived from the fact that the Indians came from far and near to make bows from a mountain birch found here and peculiarly adapted to this use. • The forest is the natural home of game animals and the region is most attractive to both sportsman and recreationist. A great variety of wild animals and birds are found including bears, mountain lions, deer, elk, mountain sheep, beaver, martens, grouse, ptarmigan, sage chickens and

many others. • For many years the lakes and streams have been kept stocked with various species of trout, including rainbow, eastern brook, native, steelhead and German brown. • Hotels and lodges are located in various parts of the forest and are patronized by many hundreds of visitors every year, while well equipped camp grounds in attractive locations are maintained by the Forest Service. University of Wyoming has a large and very popular camp at Nash's Fork which is used in connection with the summer school of field courses in geology, botany and zoology—said to be the "coolest summer school in the United States."

COLORADO DUDE RANCHES

For those desiring a summer vacation of riding, hiking, fishing or hunting in the great West, there is no more ideal place than a dude ranch in Colorado. Thousands of people each year spend glorious days on these vast land holdings, which oftentimes are more than 10,000 acres in extent, and lie in settings of great beauty, with snow-capped mountains, nearby and lovely little lakes and streams almost at your feet. • In Colorado are dude ranches of every description, with all degrees of comfort and accommodations. Some are equipped with cabins having hot and cold water and bath tubs; others with pitchers and basins and portable bath tubs. Some have large dining pavilions with white-coated colored waiters, others dine their guests, or "dudes," in their own homes at a large table "family style." • Many of the Colorado dude ranches are great working ranches with picturesque cowboys, large herds of cattle and horses, and long, rambling ranch houses. At these the guests are permitted



Mountains, Lakes and Forest in
Medicine Bow National Forest.



In the Colorado Rockies are many fine trails for horseback enthusiasts and each year brings thousands to enjoy this vigorous and healthful sport.



to participate in or watch all the day's activities and many who come as "tenderfeet" become surprisingly adept as the season progresses. Colts are to be broken, cattle are to be looked after and fences must be attended to. These fences sometimes run for miles over high spots, affording wonderful views of mountain and mesa. Then too there are riding trails that lead through cool, green timber. • Hundreds of trout streams far off the beaten paths afford the finest fishing in the world. Rodeos at various times during the year stir the most blasé with their wild, daredevil riders and friendly picturesque cow punchers. Guests are provided with their own horses and saddle and pack trips into the mountains are always a delight. • And to top off each day of pleasure are wonderful meals, your appetite stirred to a height you never believed possible. • Many eastern families spend their summer vacations on dude ranches, riding western cowboy saddles, hiking, fishing and hunting. Visitors or guests at the ranches are honorably referred to as "dudes," hence the name "dude ranches." The

rancher is called a "dude wrangler." You'll find a "dude ranch" an ideal place to make some new and congenial friends in addition to all the fun you have while "ranching."

BOYS AND GIRLS CAMPS

For the youngsters—boys and girls in their teens—a vacation on a Colorado dude ranch is a momentous experience and an unforgettable thrill. Parents who have sent their youngsters to a Colorado camp or dude ranch for the summer say that it does them a world of good. Not only do they come home strong and robust but they seem to have a new keenness as well and it helps them in their schooling . . . Colorado is no longer just a splotch on a colored map. Being out in a Colorado mountain camp gives a boy or girl self reliance. Perhaps no other experience will develop them so quickly and so surely. • There are a number of excellent camps, lodges and ranches less than a day's ride by motor from Denver. They range in price from \$20.00 per week, American plan, to more than \$400.00 for the season. Activities vary at each ranch, but the general list includes riding (each boy or girl has his own horse at many ranches), overnight saddle trips, fishing, forestry, Indian lore and nature study. At some camps tennis, softball, track and field sports, handcrafts, rifle practice, archery, swimming, boating may also be enjoyed. At two or three there are regular tutors who help to prepare pupils for College entrance examinations.



Uninvited guests are treated to a "handout."



Boys Camps in the Colorado Rockies offer exceptional opportunities for Boy Scout activities and training.

Cowboys in the making on one of the western dude ranches.



A successful angler shows how it's done.



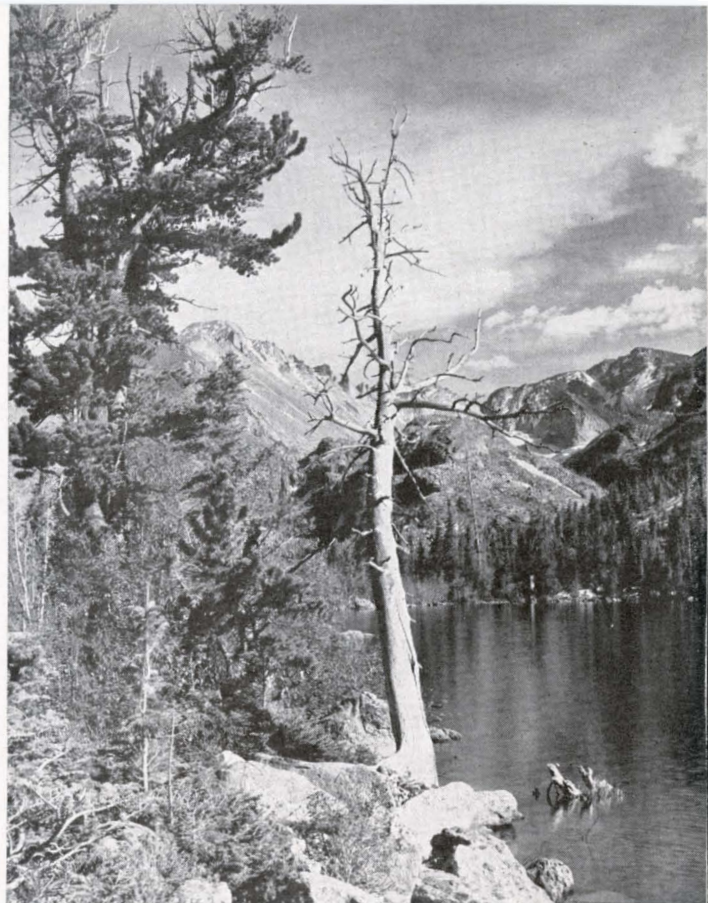
COLORADO AS A SIDE TRIP

On through tickets from the East, reading via Chicago and North Western-Union Pacific, passengers may visit Denver at no extra cost for rail transportation. Thus you may visit Denver as an interesting side trip on your way to Yellowstone, Zion, Grand Canyon, Bryce Canyon or other western National Parks, California, Sun Valley, Idaho or the Pacific Northwest. A similar privilege is granted eastbound from certain sections of the West. • Let the nearest North Western representative (list on page 34) help you make your itinerary and aid you in the planning of your vacation. He has visited this great vacationland and can assist you in dozens of ways because of his familiarity with the West. He will gladly send you descriptive booklets, and any specific information you may request regarding routes, fares, sleeping car service, stopover privileges and side trips. If you desire it, he will call upon you at your place of business or home, and arrange for your tickets and reservations. There is no charge for this service. It is yours for the asking.

THE PLEASANT WAY TO GO

The pleasantest, smoothest, most luxurious way to Colorado is the *railway* . . . and fortunately, it is also the *fast, comfortable, economical* way.

- Denver, key city of Colorado, is easily reached

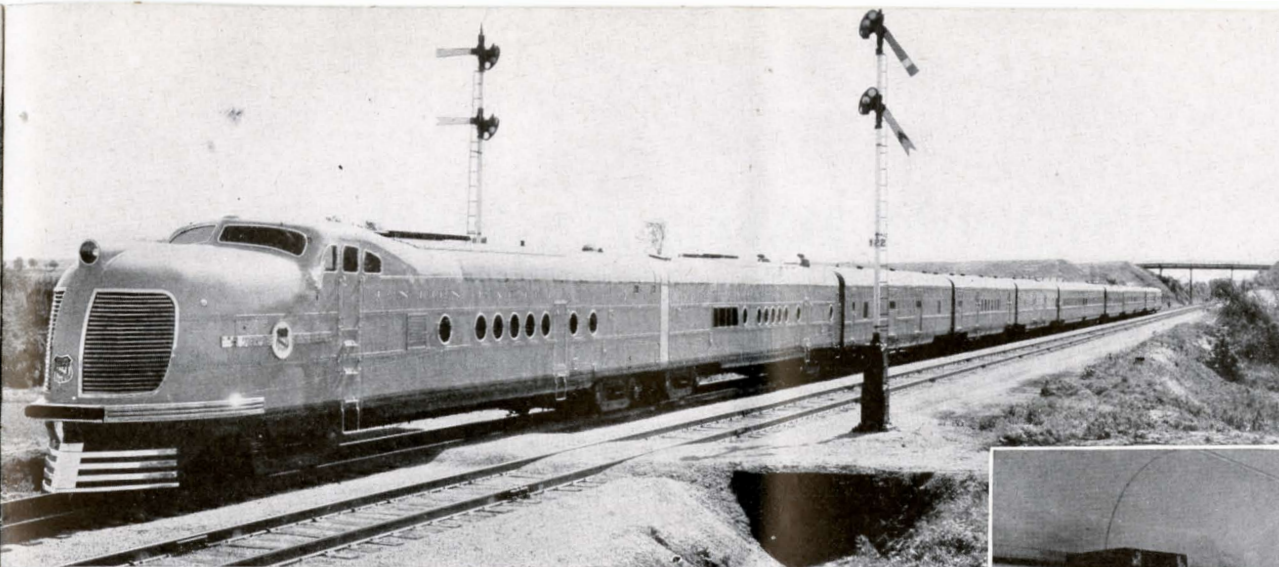


Longs Peak from Bear Lake, Rocky Mountain National Park, Colorado.

on through North Western-Union Pacific air-conditioned trains from Chicago. • The fastest and finest long distance trains in the world, the two *Streamliners*, *City of Denver*, make the daily Chicago-Omaha-Denver run overnight. These trains, with their luxurious bedroom cars, open and closed section Pullmans, upper berths with windows, novel and beautiful club, dining and observation cars, beautifully appointed roomy coaches, and the latest devices to promote riding comfort, are a never-to-be-forgotten thrill to ride on. You leave Chicago in the evening and arrive in Denver the next morning, giving you a maximum of vacation hours in glorious Colorado. **NO EXTRA FARE.**

The Columbine, Colorado State flower, in its native mountain wilds.

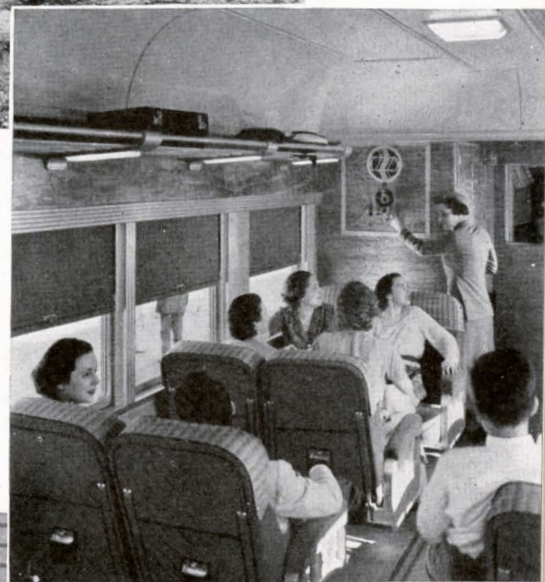




The twin Streamliners "City of Denver" ply between Chicago and Denver overnight.

Air-conditioned—cool and fresh as "morn amid the mountains"—make North Western-Union Pacific trains an apt prelude to cool Colorado.

Modern luxurious equipment so complete and comfortable in all its detail, and charming, efficient personnel assure the utmost in travel satisfaction.



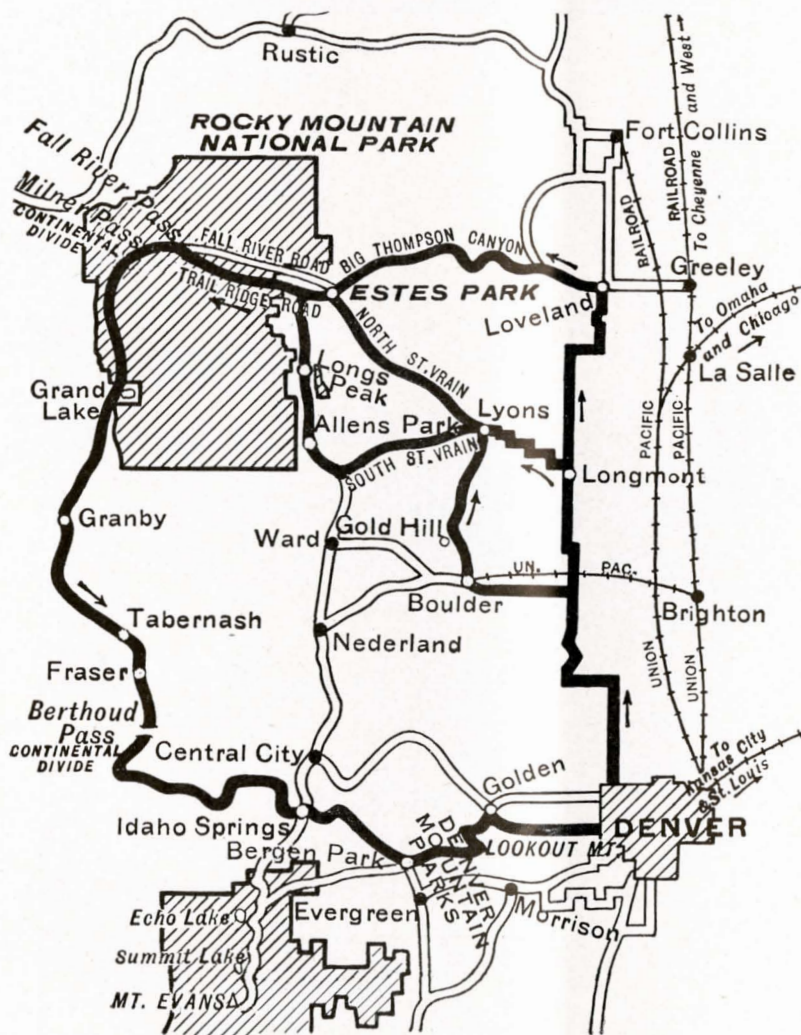
HOTELS AND RESORTS IN COLORADO

Rates Quoted Herein are Subject to Change

The Chicago and North Western Railway in furnishing this list of hotel rates and other information, which is the latest obtainable, assumes no responsibility as to its correctness. In Denver, the gateway to Colorado's Mountain Playgrounds, there are 252 hotels in the business

district accommodating 50,000 people daily; also more than 700 boarding houses and private homes where good accommodations can be secured, giving a range of price and location to suit every purse and every taste. The Denver Convention and Visitors Bureau, 519-17th Street, will help you to find just what you desire and at the price you wish to pay if you will call there upon your arrival in Denver.

• There are hundreds of cottages and rustic cabins in the Colorado mountains, some in connection with hotels and some furnished for light house-keeping. These are in every part of the state, in the National Parks, along streams stocked with fish, at the base and along the sides of canyons and peaks. The Denver Convention and Visitors Bureau also endeavors to put visitors in touch with those in charge of these cottages and cabins, and lists of cottage owners will be furnished upon request.



Route of Circle Tour Motor bus trips from Denver through Estes, Rocky Mountain National and Denver Mountain Parks.

HOTELS AND RESORTS IN COLORADO

	Minimum Rate Per Day		Minimum Rate Per Day		Minimum Rate Per Day
DENVER					
Adams, 120 rooms		DENVER		DENVER	
With bath.....	\$2.50 to \$6.00	Colorado, 100 rooms....	\$2.00 to \$3.50	New Kenmark, 120 rms.	\$2.00 to \$2.50
Albany, 330 rooms with bath		With bath.....	3.00 to 5.00	With bath.....	3.00 to 5.00
Single.....	2.50 up	Cosmopolitan, 410 rooms		Olin, 175 rooms, single..	2.50 to 4.00
Double.....	3.50 up	Single.....	3.50 to 5.50	Double.....	3.50 to 7.00
Ambassador, 100 rooms..	1.50 up	Double.....	5.50 to 8.50	O'Neill, 60 rooms.....	2.00 to 3.00
With bath.....	2.00 to 3.00	Crest, 114 rooms.....	1.25 to 1.50	Oxford, 250 rooms.....	1.50 to 2.50
Double.....	2.00 to 3.50	With bath.....	2.00 to 2.50	With bath.....	2.50 to 7.00
Argonaut, 125 rooms, single		DeSoto, 100 rooms.....	1.50 single	Park Lane, 200 rooms....	4.50 up
Toilet and lavatory...	2.00 to 2.50	Double.....	2.50 to 4.00	Roosevelt.....	1.50 up
With bath.....	3.00 to 4.00	Dover, 100 rooms.....	1.25 up	St. Francis, 57 rooms....	1.00 to 3.00
double rooms		Eleventh Avenue, 90 rms	1.00 up	Sears Hotel, 100 rooms..	2.00 to 2.50
Toilet and lavatory...	3.50 to 4.00	Erhard, 60 rooms.....	1.00 up	With bath.....	2.50 to 3.00
With bath.....	5.00 to 7.00	Hall Hotel and Apartments		Shirley-Savoy, 400 rms..	1.50 to 3.00
Auditorium, 166 rooms..	1.50 to 3.00	94 rooms.....	1.50 to 2.00	With bath.....	2.50 to 6.00
With bath.....	2.50 to 5.00	Double.....	2.50 to 3.00	Standish, 150 rooms....	1.50 up
Ayres, 75 rooms.....	1.50 up	Lancaster, 65 rooms....	1.50 to 2.50	With bath.....	2.50 up
With bath.....	2.50 up	With bath.....	2.50 to 5.00	Tours, 65 rooms.....	1.50 to 2.00
Brown Palace, 300 rooms		Marquette, 60 rooms....	1.00 up	With bath.....	2.50 to 4.50
Single.....	4.40 up	Mayflower, 100 rooms...	1.50 up	Wellington, 75 rooms....	1.50 to 3.00
Double.....	6.60 up	Midland, 70 rooms.....	1.00 to 2.50	With bath.....	2.50 to 4.00
Skyline rooms and		With bath.....	1.50 to 4.50	West, 115 rooms.....	1.00 up
apts., single, from..	8.00	Newhouse, 75 rooms....	1.50 up	West Court, 130 rooms..	1.25 up
Colburn, 200 rooms.....	2.50 up			Wynne, 100 rooms.....	1.50 up
				With bath.....	2.00 up

ESTES PARK—ROCKY MOUNTAIN NATIONAL PARK REGION

American Plan except where marked (E) European

	Per week	Per Day		Per Week	Per Day
Baldpate Inn.....	Estes Park, Colo. \$42.00	\$6.50	Hupp Hotel (E).....	Estes Park, Colo. \$18.00	\$3.00
Bear Lake Lodge.....	Estes Park, Colo.	6.35 up	Long's Peak Inn.....	Longs Peak, Colo. 36.00 up	6.00 up
Brinwood Hotel.....	Estes Park, Colo.	37.80 .. 2.00 to 3.00	Marshall Cottages.....	Estes Park, Colo. 22.50 & 50.00	
Chalet Ranch.....	Estes Park, Colo.	(Single) 9.00 without bath	Mountainside Lodge...	Estes Park, Colo. 50.00 & 66.50	
		(Double).....	National Park Hotel (E)	Estes Park, Colo. 12.00 up	2.00 up
		(Single) 10.00 with bath	Phantom Valley Ranch	Grand Lake, Colo. 49.00 to 56.00	7.50 to 8.50
		(Double).....	Prospect Inn (E).....	Estes Park, Colo.	1.75 to 3.75
			Rapids Hotel.....	Grand Lake, Colo.	One person private bath 13.00
Chez Jay Hotel (E)....	Estes Park, Colo.	2.00 to 4.50			One person no bath.. 7.00 to 9.00
Columbine Lodge.....	Estes Park, Colo.	45.00 & 50.00 7.00 & 8.00			Two persons no bath.. 6.00 per person
Corner Cupboard.....	Grand Lake, Colo.	49.00 single			(Prices include two meals each day)
		(Shower).....	Riverside Hotel (E)....	Estes Park, Colo.	1.50 to 4.00
			Sherwood.....	Estes Park, Colo.	1.75 to 3.00
		42.00 double (Shower)	Somerville Lodge (E)..	Estes Park, Colo.	2.00 up
Crags Hotel.....	Estes Park, Colo.	52.00 up	Spragues Ranch-Hotel..	Estes Park, Colo.	5.25 up
Crystal Sprgs Lodge...	Allenspark, Colo.	30.00 up	Stanley Hotel.....	Estes Park, Colo.	8.00 up
Elkhorn Lodge.....	Estes Park, Colo.	40.00 up	Stead's Ranch and Hotel	Estes Park, Colo.	\$38.50 and up 5.50 up
Fall River Lodge.....	Estes Park, Colo.	40.00	Thunderbird Lodge....	Estes Park, Colo.	6.50 to 9.00
Forest Inn.....	Estes Park, Colo.	26.00 & 47.50	Voelkel's Glacier Lodge	(E) Estes Park, Colo.	2.00 to 4.50
Glen Haven Lodge (A or E)	Estes Park, Colo.	4.00 to 11.00	Camp Woods Cottages (E)	Estes Park, Colo.	1.00 to 6.00
Grand Lake Lodge.....	Grand Lake, Colo.	Single room—	Wild Basin Lodge.....	Allenspark Colo.	40.00—double
		no bath.....			45.00—single
		Double room—no bath	Y.M.C.A.....	Estes Park, Colo.	
		7.00 ea.	Sleeping rooms.....	9.00	1.75
		Single room with bath	Lodge.....	18.00	3.00
		10.00	Housekeeping cabins (4 or 5 persons)	30.00	6.00
		Double room with bath	A-la-carte meal service—June 1—Sept. 2		
		8.00 ea.			
Hayden Bungalows—all modern—rates on application.					
(Hayden Realty Co.—Estes Park, Colo.)					
Hewes-Kirkwood Inn...	Estes Park, Colo.	28.00 up			
Holzwarth Ranch Hotel	Grand Lake, Colo.	45.00 up			

	Distance from Denver	Minimum Rate Per Day		Distance from Denver	Minimum Rate Per Day
COLORADO SPRINGS.....	75 miles.....		COLORADO SPRINGS—Continued.....		
Acacia (E).....	(Without bath)	\$2.50 up	Joyce (E).....		\$2.00
	(With bath)	5.00 up	Plaza (E).....		2.00 up
Alamo (E).....		3.00 up	Rex (E).....		2.50 up
Albany (E).....		1.25 up	Savoy (E).....		\$1.50 to \$3.50
Antlers (E).....		\$5.00 to \$7.00			
Alta Vista (E).....		4.00	MANITOU SPRINGS.....	80 miles.....	
Arrow (E).....		1.50			
Broadmoor (E).....	Single Rooms	\$10, \$11, \$13, \$15, \$17	Cliff House.....	(E) \$2.00 up—(A) \$4.00 up	
	Double Rooms	\$18, \$19, \$23, \$25, \$30	Grand View.....	(A) 7.00	
	Lanai Suites	Single.....	Sunnyside.....	(A) with bath \$7.75	
	Lanai Suites	Double.....		(A) no bath 6.25	
Cheyenne (E).....		\$1.55			

HOTELS AND RESORTS IN COLORADO (Concluded)

Rates shown are the lowest. (A) American plan. (E) European plan.

City	Distance from Denver	Name of Hotel	Per Day	Per Week	Per Month
ALAMOSA	252 miles	Victoria (E)	\$1.50 up		
		Walsh (E)	1.75		
Boulder	20 miles	Albany (E)	1.25 up		
		Alps (E)	1.50		
		Blanchard Lodge	3.50 up		
		Boulderado (E)	6.00	\$35.00	
		Colorado Chautauqua Assn. Cottages and Rooms	1.50		
		Monticello (E)	1.50 up		(Rates on application)
BROOK FOREST	33 miles	Brook Forest Inn (A)	9.00 and 13.00 per day		
CANYON CITY	160 miles	Canyon (E)	1.50 up		
		El Rio (E)	2.00		
		McClure (E)	1.50 up	6.00 up	\$20.00 up
		Strathmore (E)	1.50 up		
CENTRAL CITY		Teller House (A)	2.50 up		
CLARK	191 miles	Glen Eden	6.00 up	45.00 up	
CRAIG	232 miles	Cosgriff (E) Single	2.50 to 4.00		
		Double	3.50 to 6.00		
		Colorado (E)	1.00 up		
		Home (E)	1.50 up		
CRIPPLE CREEK	125 miles	Imperial (E)	2.00 up		
DECKERS	52 miles	Grandview Lodge (A)	1.50 to 3.00	8.00 to 14.00	
		2-bed cabins		20.00	
EVERGREEN	30 miles	Troutdale-in-the-Pines (A)	10.00 up		
		with private bath (Single)	16.00 to 24.00 per day		
		with private bath (Double)	24.00 to 34.00 per day		
		Cabins		From 20.00 per day	
FORT COLLINS	74 miles	Armstrong (E)	1.50		
		Lincoln (E)	1.50 up	7.00 up	
		Northern (E)	1.25 up		
GLENWOOD SPRINGS	225 miles	Hotel Colorado (E)	1.50 up		
		(A)	5.00 up		
		Denver (E)	1.50		
GOLDEN		La Roy (E)	2.50 up		
GRANBY		The KaRose (A)	8.00	55.00	
		Cabins		35.00 to 75.00	
GRAND JUNCTION		La Court (E)	1.75 without bath		
			3.00 with bath		
		St. Regis (E)	1.75 up		
GREELEY	55 miles	Albion (E)	1.00 up		
		Camfield (E)	1.25 up	7.50 up	20.00 up
		Sterling (E)	1.25 up		
GUNNISON	289 miles	Allen (E)	2.50 up		
		Columbine (E)	1.00 up		
		Gunnison (E)	1.50 up		
IDAHO SPRINGS	39 miles	Conroy (E)	1.50 up		
		Queen (A)	3.00-4.00		
		Radium Hot Springs (A)	2.00	14.00	
LEADVILLE	175 miles	Vendome (E)	1.50 up	9.00	
LONGMONT	34 miles	Imperial (E)	1.65 up		
LOVELAND	52 miles	Lincoln (E)	1.00-2.00		
		Loveland (E)	1.25-2.00		
MONTE VISTA	269 miles	La Veta (E)	1.25		
		El Monte (E)	2.00 up		
MONTROSE	351 miles	Belvedere (E)	1.50 up		
		Chipeta (E)	1.25 up		
PARSHALL	91 miles	Buckhorn Lodge (A)	8.00	52.00	
PUEBLO	119 miles	Congress (E)	1.75 up		
		Grand (E)	1.00-2.50		
		La Salle (E)	1.00		
		Maine (E)	1.25		
		Vail (E)	1.75 up		
		Whitman (E)	2.50 up		
SALIDA	215 miles	Palace (E)	1.50 up		
		Sherman (E)	1.50 up		
TRINIDAD	210 miles	Ambassador (E)	1.00-1.50		
		Columbian (E)	1.50 up		
		Coronado (E)	1.50 up		
WARD	46 miles	Lodge of Pines (A)			(Rates on application)

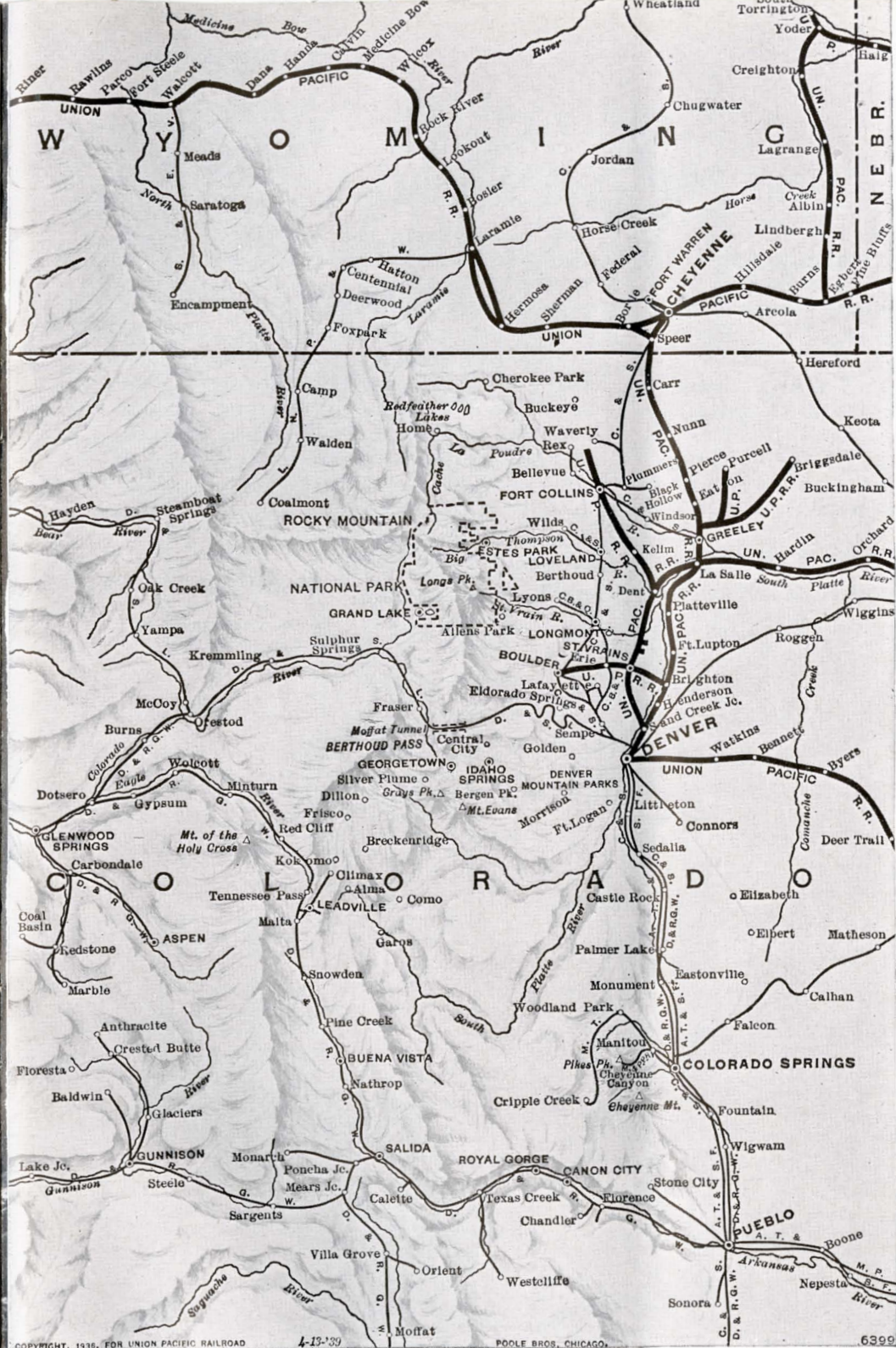
CAMPS FOR BOYS AND GIRLS

The Cheley Colorado Camps for boys and girls are beautifully situated near Rocky Mountain National Park on the Land O'Peaks Ranch, five miles south of Estes Park. These camps are under the competent management of a director and staff of special instructors in camp, trail and woodcraft. In addition a group counselor is provided each 5 campers. Well planned daily programs insure wholesome instruction, supervised play, and a certain

amount of essential work.

The Camps are divided into eight separate units accommodating age groups from 9 through 17, boys and girls. Separate lodge, dining room, sleeping cabins, infirmary, etc. for each camp. Season June 18 to August 26. Detailed information, folders, etc., available from J. A. Cheley, 601 Steele St., Denver 6, Colo.; after June 1 at Cheley Colorado Camps, Estes Park, Colorado.

NOTE—Specific information regarding other camps for boys and girls located in Colorado's Mountain Playgrounds may be secured by writing to the Denver Convention and Tourist Bureau, 519 Seventeenth St., Denver, Colo., or Chamber of Commerce, Estes Park, Colorado.



Map showing how lines of Union Pacific serve Colorado's Mountain Playgrounds.

MAKE THE MOST OF YOUR VACATION

If it's to be a *real* vacation this year — and not just two weeks or so away from the job — then you'll want to eliminate all responsibility, all things that try your temper and tax your strength. In a word, you want to be off on a care-free pilgrimage.

Experience-wise travelers will always recommend North Western trains for complete travel enjoyment. You save precious hours getting to the Vacationland of your choice. You avoid unexpected expense. You can figure in advance what your trip will cost. You travel comfortably, in

cool, air-conditioned cars that keep you clean and fresh. You arrive rested and ready for Adventure! Your vacation begins the moment you step aboard a North Western train. When you discover how low are the rail fares, when you compare how much you get in real travel comfort, you'll come to the conclusion that a train vacation is really a surprising bargain. So this year, plan to go by train—by North Western, "the railroad that makes romance a reality." Let a North Western representative help you plan the finest vacation you've ever had.

NORTH WESTERN REPRESENTATIVES

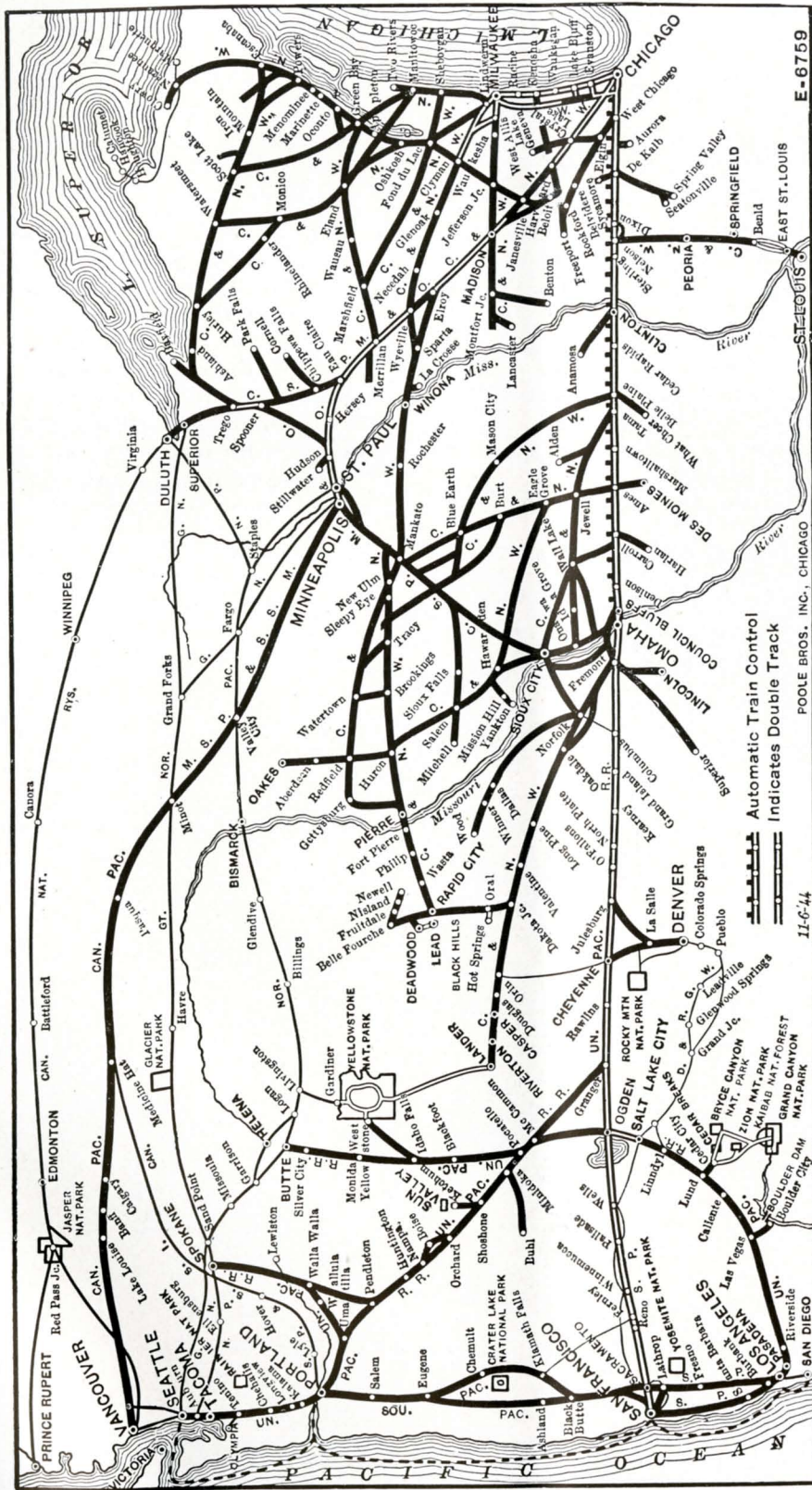
ARE LOCATED AT THE ADDRESSES SHOWN BELOW

Chicago 3, Ill.	1011 Field Building, 140 South Clark Street	H. G. Van Winkle, Assistant General Passenger Agent
	City Ticket Office, 148 South Clark Street	L. J. Joswick, City Ticket Agent
Chicago 6, Ill.	Passenger Station, 500 W. Madison Street	N. M. Kean, Assistant General Passenger Agent
Atlanta 3, Ga.	201 Brown Mary Building	H. Schultz, General Agent
Birmingham 3, Ala.	214 Volunteer Building	C. P. Johnson, General Agent
Boston 8, Mass.	212 Old South Building, 294 Washington Street	F. A. Haas, General Agent
Buffalo 3, N. Y.	202 Ellicott Square, 295 Main Street	J. P. Fox, General Agent
Casper, Wyo.	Station	F. H. Tribbey, Division Freight and Passenger Agent
Cedar Rapids, Iowa	326 First Avenue, N. E.	W. F. Winkrantz, Division Freight and Passenger Agent
Cincinnati 2, Ohio	202 Dixie Terminal Building, 49 East Fourth Street	J. T. Hall, General Agent
Cleveland 13, Ohio	1106 Terminal Tower Building	H. C. Langerude, General Agent
Council Bluffs, Iowa	Broadway Passenger Station, 11th and West Broadway	H. F. Smith, City Agent
Dallas 1, Texas	729 Kirby Building, 1509 Main Street	M. D. Spaulding, General Agent
Denver 2, Colo.	216 Patterson Building, 17th and Welton Streets	C. S. Evenson, General Agent
Des Moines 9, Iowa	318 Des Moines Building, 6th and Locust Streets	G. A. Langworthy, Division Freight and Passenger Agent
Detroit 26, Mich.	602 LaFayette Building, 144 West LaFayette Boulevard	R. H. Miller, General Agent
Duluth 2, Minn.	Lonsdale Building, 302 West Superior Street	L. J. Perry, General Agent
Eau Claire, Wis.	Station	J. W. Morrill, General Agent
Evanston, Ill.	Davis Street Station	J. R. Hancock, Traveling Passenger Agent
Fargo, N. D.	411 First National Bank Building	C. J. Krupich, General Agent
Great Falls, Mont.	817 First National Bank Building	C. T. Spear, General Agent
Green Bay, Wis.	Station	F. B. Martin, Division Freight and Passenger Agent
Houston 2, Tex.	709 Cotton Exchange Building	C. F. Zadnick, General Agent
Indianapolis 4, Ind.	315 Merchants Bank Building	R. L. Dickson, General Agent
Kansas City 6, Mo.	400 Railway Exchange Building, 7th and Walnut Streets	D. D. Schuppener, General Agent
Lincoln 8, Neb.	Woods Brothers Building, 130 South 13th Street	K. C. Niles, Traveling Agent
Los Angeles 14, Calif.	417 Associated Realty Building, 510 West Sixth Street	N. D. Browne, General Agent
Madison 3, Wis.	201 South Blair Street	J. W. Vilas, Division Freight and Passenger Agent
Milwaukee 3, Wis.	152 West Wisconsin Avenue	W. H. Kreiling, Asst. General Freight and Passenger Agent
	146 West Wisconsin Avenue	E. P. Rueter, General Agent Passenger Department
Minneapolis 2, Minn.	Honoko Building, 701 Marquette Avenue at 7th	F. A. Brown, General Passenger Agent
New Orleans 12, La.	1018 Hibernia Bank Building, 812 Gravier Street	S. L. Howells, General Agent
New York 18, N. Y.	Room 322, 500 Fifth Avenue	W. G. Babel, General Agent Passenger Department
Oakland 12, Calif.	513 Central Bank Building, 436 — 14th Street	W. L. Foutts, District Traffic Representative
Oak Park, Ill.	Marion Street Station	J. R. Crowe, Traveling Agent
Omaha 2, Neb.	814 Brandeis Theatre Building	G. A. Remington, Traffic Manager
	City Ticket Offices, 1614 Farnam Street and 15th and Dodge Streets	
Peoria 2, Ill.	213 Jefferson Building, 200 South Jefferson Street	T. A. Carney, Division Freight and Passenger Agent
Philadelphia 2, Pa.	1002 Girard Trust Co. Building, 1400 South Penn Square	H. Eklund, General Agent
Pittsburgh 22, Pa.	212 Oliver Building, 535 Smithfield Street	H. P. Dickson, General Agent
Portland 5, Ore.	212 Pittock Block, 921 S. W. Washington Street	J. D. Ritchie, General Agent
Racine, Wis.	Station	G. W. Carnell, General Agent
Rapid City, S. D.	Alex Johnson Hotel	H. J. Heymann, Division Freight and Passenger Agent
Rochester, Minn.	The Kahler	O. H. Romadka, General Agent Passenger Department
Rockford, Ill.	505 South Church Street	R. E. Williams, General Agent
St. Louis 2, Mo.	603 Bank Building, 314 North Broadway	H. L. Hammill, General Agent
St. Paul 2, Minn.	363 St. Peter Street, Hotel St. Paul	R. F. Wendt, General Agent Passenger Department
Salt Lake City 1, Utah	320 Union Pacific Building, 10 South Main Street	W. W. Sells, General Agent
San Francisco 5, Calif.	301 Monadnock Building, 681 Market Street	F. T. Lewis, General Agent
Seattle 1, Wash.	515 White Building, 4th Avenue and Union Street	J. F. McNamara, General Agent
Sioux City 9, Iowa	320 Nebraska Street	O. W. Thompson, Division Freight and Passenger Agent
Sioux Falls, S. D.	424 East Eighth Street	A. W. Blake, General Agent
Spokane 8, Wash.	1116 Old National Bank Building	B. A. Stokke, General Agent
Tacoma 1, Wash.	P. O. Box 1385	W. C. Donovan, Traveling Agent
Toronto 1, Ont.	69 Yonge St.	H. L. Davis, General Agent
Tulsa 3, Okla.	204 Thompson Building	G. S. Donaldson, General Agent
Vancouver, B. C.	201 Stock Exchange Bldg, 475 Howe St.	G. W. Kilham, General Agent
Washington 5, D. C.	312 Woodward Building, 15th and H Streets, N. W.	F. J. Herhusky, General Agent
Winnipeg, Man.	408 McArthur Bldg.	H. C. Carmichael, General Agent
Winnona, Minn.	54 Center Street	E. J. Carland, Division Freight and Passenger Agent
Winston-Salem 3, N. C.	617 Reynolds Building	C. W. Hancock, General Agent

E. L. PARDEE
Passenger Traffic Manager

F. G. FITZ-PATRICK
Vice-President Traffic
W. T. NORTON
Traffic Manager — Sales

H. C. DUVAL
General Passenger Agent



North Western — Union Pacific

—span the scenic West, offering service to the vacation wonderlands—Colorado, Yellowstone, Utah-Arizona National Parks, Hoover (Boulder) Dam, California, The Pacific Northwest, and the nation's popular year 'round sports center—Sun Valley, Idaho; any one, or all of which may be combined with a trip to Colorado.

COLORADO

Mountain Playgrounds



CHICAGO AND NORTH WESTERN SYSTEM

COLORADO

Mountain Playgrounds



CHICAGO AND NORTH WESTERN SYSTEM