

The

NORTH
WESTERN

LIMITED

The

NORTH
WESTERN

LIMITED



THE NORTH WESTERN LIMITED



THE NORTH WESTERN LIMITED opens a new chapter in fine train history and is a genial reflection of the time honored slogan—

“The best of everything in the best of the West.”

. . . and what a fitting tribute to a discerning clientele—the most modern of travel equipment—every comfort and convenience, a capable and enthusiastic service staff marked by self respect and understanding—all the amenities dispensed to a guest by a liberal host and dedicated to the comforts of a traveling public.

Fragrant of the gentler moods of the Spanish motif, but brilliantly reminiscent of its classic period, the interiors are a delight to the eye.

Paneled in beautiful walnut finish with discreet inlays of carving and decoration, the spirited performance of motive power is happily joined with the art and craft of modern furnishings.

Making travel-life as sparkling and spontaneous as that enjoyed in the most sumptuous hostleries or clubs.





BON VOYAGE—and it's "smoothly away" on the trip de luxe—a tingling expectancy awaits the start.

Out of the great train shed noses a notable creation of modern travel—The North Western Limited—The Chicago & North Western Railway's luxurious train—linking the mid-west metropolis and the twin cities on its daily run between Chicago, Milwaukee, St. Paul and Minneapolis.

Here is truly the apotheosis of railroad equipment on a grandiose scale—one of the world's most distinguished trains—an outstanding example of modern engineering science, coupled with a skillful blending of art and decoration.

There is a sense of pageantry about the coming and going, with almost regal splendor she fairly floats out of the station—poised on smooth vibrationless Hyatt Quiet Roller Bearings.

The door to train romance is open, and the following pages tell how North Western provides the key.





*A*n imaginative bit of craftsmanship is this enclosed observation car—a perfect solarium, an inviting replica of the modern sun room, with all its qualities of comfort and livability.

. . . and how it obsoletes the built-in platform construction—you sense the composite unit the instant you cross the threshold—a definite design of graceful simplicity—an intrinsic part of the train.

Slender steel lines divide the window panes, as quaint as medieval leaded glass and as modern as “today”, giving more than a glimpse of the passing landscape without the distractions of wind, cinders or dust.

. . . and if you are gifted in science, you will be particularly impressed with the casement enclosures—a new specially constructed feature glass, admitting the ultra-violet rays.

A social sun room on a train, with comfort—luxury—you can watch the shifting scenes of the country-side . . . come . . . and go.





HANDSOME paneling and ornate hand carving are lent distinction in this attractive setting—an observation drawing room, with the inviting attributes of a distinguished club.

A room of delicate elaboration, framed in a delightful sheen of walnut finish—the chandeliers and flame side lights cast their amber tones on the handsome texture of walls and ceiling, and this color scheme is repeated in the rich brocade patterns of divans and chairs.

The doorway makes a pleasing opening which leads out into the color and animation of the solarium.

Nowhere is there a more perfect blend of harmonious detail . . . and there are little convenient things that count with particular people, like table lamps—room service—magazines—and of course, a telephone.



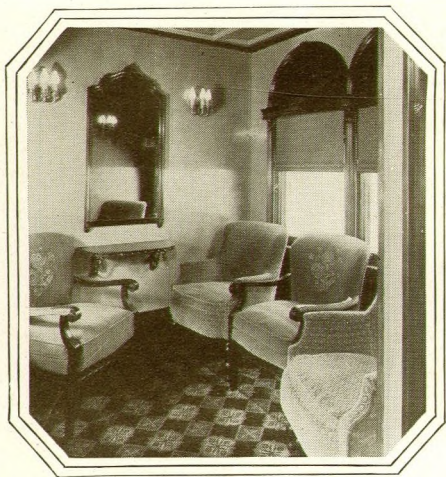


THIS drawing-room—a beautiful work of art—an atmosphere of distinction and good taste—and how skillfully the period designs are grouped together, a sympathetic merging of the Spanish Renaissance with the simplicity motif of today.

A perfect co-ordinated drawing room—a bright friendly room of generous proportions—the deep comfortable chairs and lounges rest on a resilient carpet of green, blue and taupe, and the upholstery mixtures are gay French moquette patterns against a rose background . . . another whiff of by-gone days.

Architecturally, the glories of period design are largely a matter of temperament—and how graciously this modern and colorful room smooths the most uneven of temperaments.





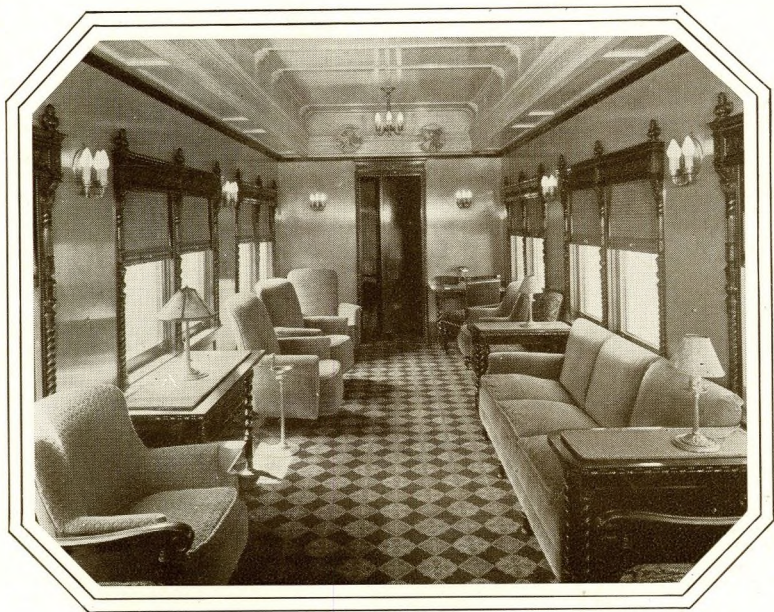
THIS ladies' lounge—so truly feminine—is a room of delightful charm.

Furnished in the smartest of cozy chairs—just a whisper from Paris, the gay bouquets embroidered on the backs, simulate fascinating bits of color and life from old-time gardens.

The selection and grouping of the furniture lends an atmosphere of feminine intimacy—that longed for chat, that pent up joyful meeting—and then not to forget beauty's demands, the graceful mirror and just beneath, the convenient console table.

. . . and to top off this friendly little room, the grace and dignity expressed in ceiling and wall decoration—and in the evening, flame lights cast a spell of beauty and color and life. No wonder this room is a favorite retreat, and how graciously it expresses the woman of today—her smartness and her femininity.





THE NORTH WESTERN LIMITED is more than a train—it is a modern reflection of a travel service—a perfect and gallant companion to other luxurious trains that form the splendid fleet of the complete North Western System.

The great territory traversed by the Chicago & North Western Railway, is one of the vital areas of our American dominion—directly west of Chicago on a straight line to the Pacific Coast and north to St. Paul and Minneapolis—the Mid West—The North West and the Pacific West are the territories served by these magnificent trains in counterpart with North Western superior service.

If you are contemplating a trip, either for business or pleasure, telephone a North Western representative and he will gladly be of assistance to you.





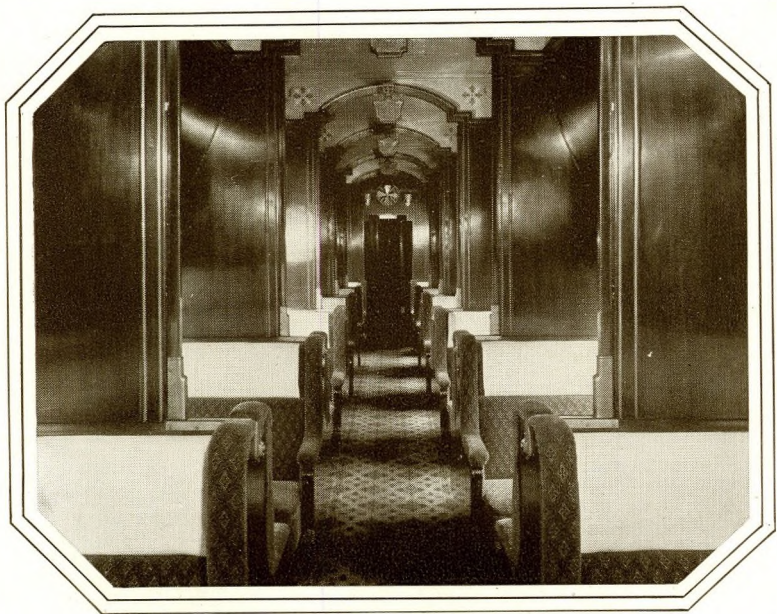
HERE is travel romance in the most modern of settings—an individual deluxe room with a full length bed, and breakfast service—just like a guest room in a modern home and in an atmosphere which envelops you with that spontaneous spirit of “well being.”

Smart bright bedspreads on green or rose backgrounds give a colorful tone to the rooms, and the innovation of fine box springs and hair mattresses verify modernity and travel luxury.

A full length mirror in the door and an oval mirror in the wall, a folding dressing and writing table, a convenient unobtrusive lavatory, self heat regulation, a servidor for shoes, an electric fan, a thermo bottle, a marine clock with illuminated dial vie with a tiny night lamp to complete this hospitality.

An indefinable air of cosmopolitanism — a fastidious room — train aristocracy.



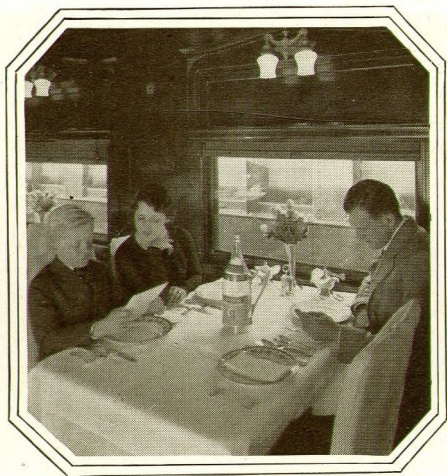


THIS specially constructed Pullman sleeper gives a new interpretation to night travel—the permanent partitions between sections gives a sense of withdrawal into privacy, which the sophisticated traveler much prefers.

The soft inviting graciousness of upholstery and paneling blend most beautifully with the rose and green in the black background of the carpet—the ornamental Spanish arches admirably conform to the spirit of the design, giving a sweep of quiet elegance, keyed to the artistic trend of the times.

. . . and there are small lights beneath the seats that illuminate the carpet—a special ventilator—reading lights and mirrors in both upper and lower berths—a dustproof window sash—coil spring mattresses—all in the alluring richness of modern design and decoration, allowing you to enjoy the finer aspects of life inexpensively.





“ . . . now good digestion wait on appetite, and health on both.” What an appetite awaits the dinner hour—and what a dinner awaits the hungry, and if food is more delectable in beautiful surroundings, here food is doubly blessed; for the eye meets snowy white linen, sparkling colored glassware, gleaming silver and especially patterned china—the fresh cut flowers on the table add to the attractive setting, giving a finality of charm to that smiling perfection of service.

. . . and what a distinction can be wrought through the happy use of architectural adornment—the lighting fixtures; objects of art, are strikingly original—and silhouetted against a background of pastel tones is a black walnut buffet with its gleaming silver service.

. . . an inviting room with the blithesome spirit of vigor and freshness so essential to dining room interiors.





THE cuisine of the dining car—so spotlessly clean, is a model kitchen, replete with every culinary appliance and utensil for sanitary cooking and serving.

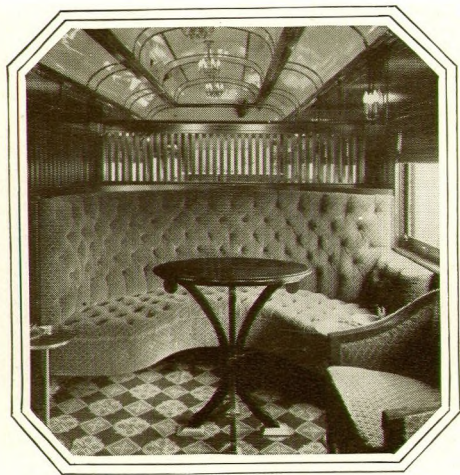
The electric refrigeration system is a novel innovation for a train and there is an indraught device that keeps out heat and odors.

. . . and how the menu reflects the personality of a gifted chef—widely experienced in his chosen profession, he imparts a special quality and flavor to choice foods—one is constantly aware of that mastery of the culinary art, which has brought fame to “North Western” table d’hote dinners.

These table d’hote dinners are served leaving Chicago—a la carte breakfast service into the twin cities—a la carte dinner service leaving the twin cities and a la carte breakfast into Chicago.

A generous menu offering a wide variety of excellent dishes—so modest in price and all so artfully prepared by that genius “The Chef De Cuisine” of North Western trains.





THIS page introduces the club car lounge—a beautifully proportioned room, accentuated by the adroit handling of selected woods.

The assembly of ornaments and paneling superbly interpret the club room premise, and the decorator's understanding of color nuances gives an animated tone of quiet elegance, that's most hospitable and pleasing.

Tastefully outfitted with new utilitarian features, the room is most interesting and unique—the innovations so skillfully combined that perfect harmony is achieved—an equipment adventure with modern artistry, breathing a bright new note.

A club room that's different—novel—and new—features you have never before seen on a train—and there is companionable seclusion, full of possibilities for an intimate chat or a friendly game.





INFORMAL are the pleasures of this colorful social room—a beautifully toned radio conveniently placed, gives hint of a concert reception.

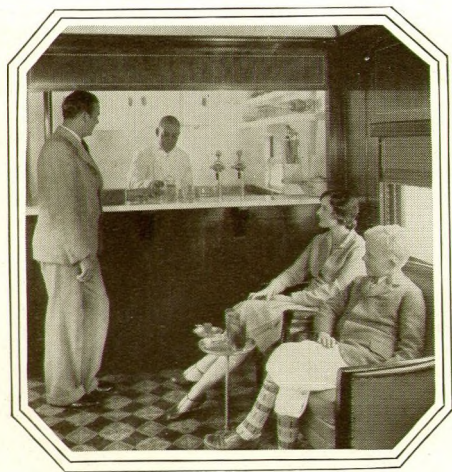
The chairs and lounges are open armed invitations to rest and contentment—the broad low windows give a full view of the passing landscape and the even smoothness of the train gives that sense of repose—an atmosphere which busy people of affairs build for themselves in their leisure hours.

Somewhere there are telephone calls and appointments, and how indifferent one becomes to outside interest—the time spent is utterly satisfying—and without social or business obligation.

Before dinner, after dinner, when the radio concert is over, one beholds a happy gathering of passengers in this room that is a pleasant substitute for the comforts of home or club.

. . . a journey that is much too short, on a train you are loathe to leave.





A ROOM of unique design and so individual, at the farther end of the car is a semi-enclosed ladies' salon, beautifully furnished with divans and chairs, and there are oval tables and reading lamps, especially patterned for the setting.

. . . and the upholstery is in rich smart tones of pleasing contrast, so different from the sombre shades of yesterday, always supplemented by the mingling of pretty frocks and colorful sport clothes—a gay, youthful nook, and what a fitting background for particular people—one can almost see them in cosmopolitan review.

. . . and another innovation right up to the minute—a luncheonette and fountain service—and how the picture above bears out the statement—modern—and different.





HERE is a feeling of open hospitality the moment you board the North Western Limited.

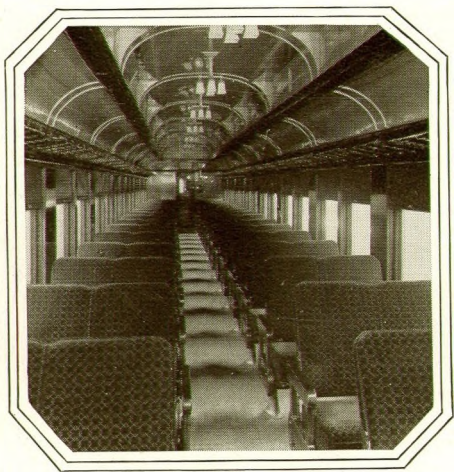
From the cheery solarium—through the inviting drawing-room—the immaculate diner—and the recreational club lounge, there is a freedom and friendliness of a genial moving club.

There is no such thing as monotony or boredom—the easy access to all parts of the train gives a pleasing variety of change and interest—and the various features and novel innovations admirably conform to the spirit of the times.

The hours on the train pass joyously—in relaxation for some—in active amusement for others—in making new friendships, new circles of acquaintances—a delightful rendezvous and in the most modern and congenial of travel setting.

. . . and it is not surprising that farsighted people make return reservations the instant they leave the train.





THE NORTH WESTERN LIMITED presents a coach service that is a fitting compliment to this de luxe train.

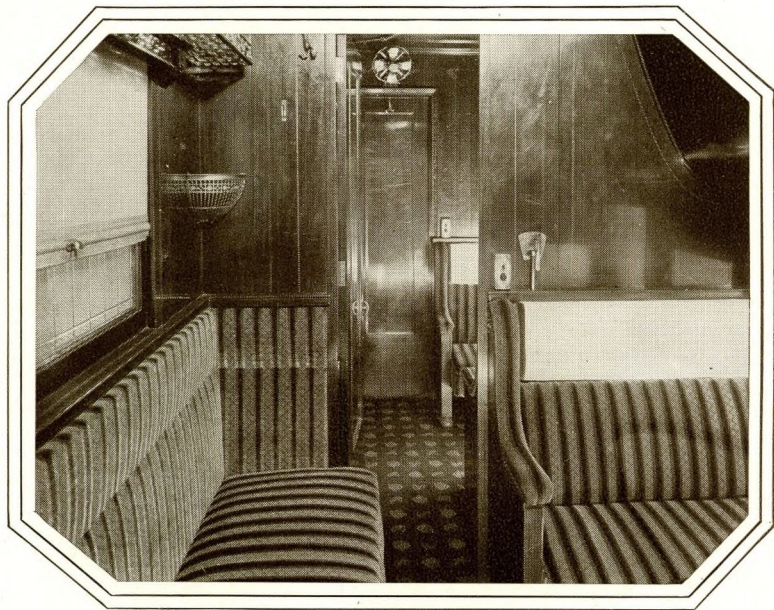
Dignified by its spacious proportions—modern and artistic in design and decoration, the coach presents the utmost in amenities and travel conveniences.

The seclusion of the high back chairs with coil spring cushion seats gives a new expression to comfort and freedom and are easily convertible to the needs of the individual.

At the farther end of the car is a friendly smoking room with easy chairs and a broad leather settee, and the lavatories are of the latest construction with all modern conveniences.

A handsome coach with an inviting interior—the kind one would associate with just such a train.





WOMEN feel a real affection for this drawing-room compartment car—and their admiring glances show frank astonishment at the delightful harmony and colors, the restful spirit that pervades the interior.

A comfortable family room, and so convenient for the children, or friends traveling together, with the aspects of a genial hostess sensitive to the ordered beauty of present day demands.

The rooms are so arranged that they may be used singly or en suite—a door between compartments permits them to serve as one large interior—presenting a luxurious sleeping room at night and a secluded sitting room by day.

The pleasing variation in arrangement and appointment, meet the demands of the most fastidious as to comfort—there is a roomy wardrobe cabinet and a wall cabinet for toilet articles, complete lavatory facilities, individual heat control, electric fan—a reflection of grace and utility in happy combination—a pleasant room—on a pleasant train—a journey of pleasant memories.



The North Western Limited Route Chicago to the Twin Cities

THE NEW NORTH WESTERN LIMITED makes the journey from Chicago to St. Paul and Minneapolis between dusk and daylight, smoothly and silently on Hyatt Quiet Roller Bearings.

The route lies along the beautiful North Shore of Lake Michigan which has a natural beauty all its own. Beyond the city limits of Chicago and on through academic Evanston, the home of the Northwestern University, the railway tracks are elevated to avoid congestion by city traffic.

Wilmette, Kenilworth, Winnetka and Glencoe with their charming homes and shaded winding streets, follow in quick succession. Ravinia Park, famed for its open air opera every summer; delightful Highland Park and Fort Sheridan—the Army Post named in honor of Gen. Phil. Sheridan; lovely Lake Forest with its golf, polo, and palatial homes; Lake Bluff and the Great Lakes Naval Training Station; Waukegan with its fine harbor and its attractive homes on the bluffs complete the galaxy of beautiful residential suburbs north of Chicago that are provided with fast suburban service.

Zion, established by Alexander Dowie for the perpetuation of his cult, is renowned for its lace-making. Kenosha is important as a manufacturing center including one of the largest automobile plants in the world. Racine, its sister city, was settled to the north long before Chicago and is an important market and distributing point for machinery and varied products.

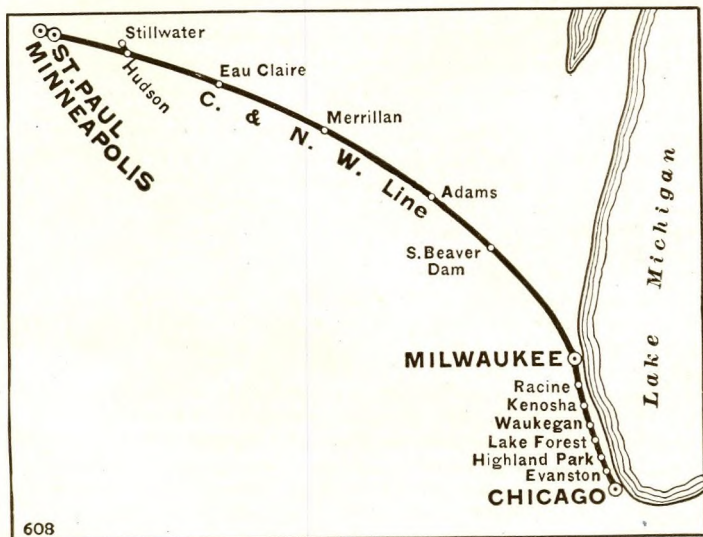
Approaching Milwaukee in the early dark of the evening, a string of starry lights marks the largest and most important city in the state of Wisconsin. Northward the route passes through beautiful Juneau Park and follows the shores of Lake Michigan till it turns northwest on its way through picturesque Wisconsin. North Lake, South Beaver Dam, and Adams follow quickly. The Wisconsin River is crossed just before reaching Necedah and at Wyeville connection is made with another main line of the North Western from Chicago. The route continues through an interesting agricultural district to Black River Falls and Eau Claire, located on the beautiful Chippewa River, which has its name from the tribe of Indians once all-powerful in the territory that is now Wisconsin

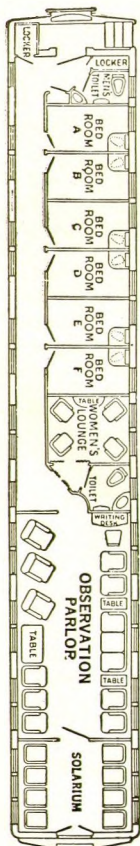


and Minnesota. On to the historic city of Hudson, the railway passes through the fertile valleys of the Chippewa and St. Croix rivers and crosses the St. Croix into Minnesota.

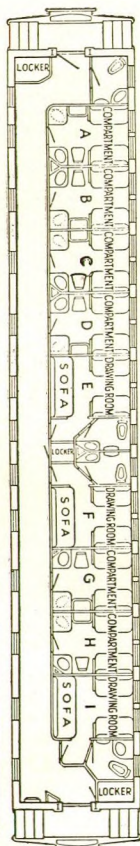
In the early hours of the morning the picturesque town of Stillwater is passed and as the sun is beginning to gild the dome of the state capitol and the twin spires of the cathedral the train glides into the Union Station at St. Paul. St. Paul is a charming residential city, and is a large jobbing and distributing center with many reminders of the early romantic days of the upbuilding of the great North-West empire. St. Paul and Minneapolis are at the head of navigation of the "Father of Waters."

Crossing the Mississippi River which separates the Twin Cities the North Western Limited enters the enterprising city of Minneapolis with its bustling business thoroughfares and picturesque lakes around which the residence streets twist and wind in graceful curving avenues. Beautiful Minnehaha Falls and nearby Fort Snelling give the Twin Cities a distinctive and colorful touch of romance. In the Union Station at Minneapolis the New North Western Limited arrives on time as quietly and smoothly as a Venetian gondola—and a new day has begun.

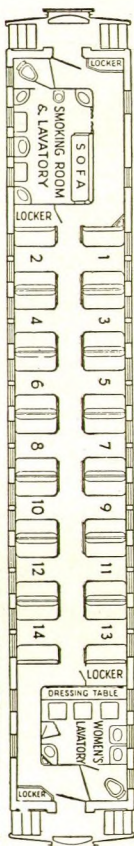




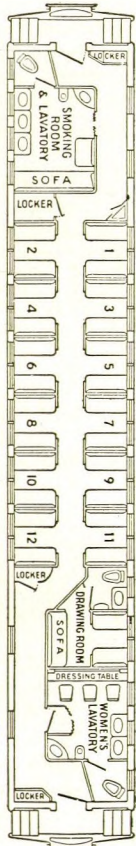
Solarium
Observation
Parlor
6 Bed Room
Pullman



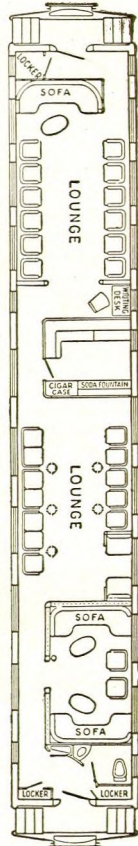
3 Drawing Rooms
6 Compartment
Pullman



14 Section
Pullman



12 Section
1 Drawing Room
Pullman



Lounge

Principal Chicago & North Western Trains

*A*MBASSADORS of grace, speed and good-will—linking the great States of the North West, Mid West and the Pacific Coast, Alaska and trans-Pacific ports.

THE NORTH WESTERN LIMITED

Chicago - Milwaukee - Minneapolis - St. Paul

CORN KING LIMITED

Chicago - Omaha - Sioux City

OVERLAND LIMITED

Chicago - San Francisco (Extra Fare)

LOS ANGELES LIMITED

Chicago - Los Angeles

SAN FRANCISCO LIMITED

Chicago - San Francisco

GOLD COAST LIMITED

Chicago - San Francisco - Los Angeles

PORTLAND LIMITED

Chicago - Portland - Seattle

CONTINENTAL LIMITED

Chicago - Los Angeles - San Francisco - Portland - Seattle

DENVER SPECIAL

Chicago - Denver

THE COLUMBINE

Chicago - Denver

COLORADO EXPRESS

Chicago - Denver

DULUTH SUPERIOR LIMITED

Chicago - Superior - Duluth

ROCHESTER-MINNESOTA SPECIAL

Chicago - Rochester - Minnesota - Dakota

MINNESOTA AND BLACK HILLS EXPRESS

Chicago - Madison - Winona - Rochester - Black Hills

NORTH AMERICAN

Chicago - Milwaukee - Minneapolis - St. Paul - Duluth - Winona

Rochester - Mankato

THE VIKING

Chicago - Milwaukee - Minneapolis - St. Paul - Winona - Rochester - Dakota

ASHLAND LIMITED

Chicago - Milwaukee - Menominee - Ashland

IRON & COPPER COUNTRY EXPRESS

Chicago - Milwaukee - Green Bay - Marquette

Representatives

CHICAGO, ILL.....	148 S. Clark St. Passenger Station 400 W. Madison St.	H. G. VAN WINKLE, Gen. Agt. N. A. HERSETH, Pass. & Tkt. Agt. A. J. GAGE, Ticket Agent
ATLANTA, GA.....	317 Healey Bldg.	J. H. SCHULTZ, General Agent
BOSTON, MASS.....	294 Washington St.	C. W. GRAY, General Agent
BUFFALO, N. Y.....	295 Main St.	J. P. FOX, General Agent
CINCINNATI, OHIO.....	49 E. Fourth St.	G. L. HELMSTADTER, Gen. Agt.
CLEVELAND, OHIO.....	925 Euclid Ave.	H. E. SAUMBY, General Agent
COUNCIL BLUFFS, IOWA.....	36 Pearl St.	H. B. ELLER, City Agent
DALLAS, TEXAS.....	202 Southwestern Life Bldg.	F. P. EYMAN, Jr., Gen. Agt.
DENVER, COLO.....	17th & Welton Sts.	G. R. LIND, General Agent
DES MOINES, IOWA.....	619 Locust St.	M. J. GOLDEN, D. F. & P. A. W. F. WINKRANTZ, General Agent
DETROIT, MICH.....	131 LaFayette Blvd.	R. H. MILLER, General Agent
DULUTH, MINN.....	424 W. Superior St.	J. D. MAHON, General Agent
GREAT FALLS, MONT.....		C. T. SPEAR, Traveling Agent
GREEN BAY, WIS.....		T. A. CARNEY, D. F. & P. A.
INDIANAPOLIS, IND.....	11 S. Meridian St.	V. A. HAMPTON, General Agent
KANSAS CITY, MO.....	420 Railway Exchange	A. O. OLSON, General Agent
LINCOLN, NEB.....	130 S. 13th St.	R. W. MCGINNIS, General Agent
LOS ANGELES, CAL.....	108 W. Sixth St.	E. H. LAMB, General Agent
MADISON, WIS.....		A. W. BOWER, D. F. & P. A.
MILWAUKEE, WIS.....	99 E. Wisconsin Ave.	A. E. LADWIG, D. F. & P. A. E. P. RUETER, General Agent
MINNEAPOLIS, MINN.....	Marquette Ave. at 7th	F. A. BROWN, G. P. A.
NEW ORLEANS, LA.....	1215 Hibernia Bank Bldg.	C. S. EVENSON, General Agent
NEW YORK, N. Y.....	475 Fifth Ave.	F. G. FITZ-PATRICK, General Agent
OMAHA, NEB.....	1423 Farnam St.	E. J. CARLAND, D. F. & P. A. G. W. HALL, General Agent
	17th & Douglas Sts.	G. A. REMINGTON, A. G. F. & P. A.
PEORIA, ILL.....	200-208 S. Jefferson St.	F. B. MARTIN, D. F. & P. A.
PHILADELPHIA, PA.....	15th & Chestnut Sts.	C. N. HALE, General Agent
PITTSBURGH, PA.....	535 Smithfield St.	J. J. LIVINGSTON, General Agent
PORTLAND, OREGON.....	385½ Washington St.	W. E. SCOTT, General Agent
RAPID CITY, S. D.....	Alex Johnson Hotel	E. E. BENJAMIN, General Agent
ROCHESTER, MINN.....	The Kahler	J. R. HANCOCK, P. & T. A.
ST. LOUIS, MO.....	314 N. Broadway	H. L. HAMMILL, General Agent
ST. PAUL, MINN.....	81 E. 5th St.	W. L. MANSFIELD, G. P. A.
SALT LAKE CITY, UTAH.....	143½ S. Main St.	N. D. BROWNE, General Agent
SAN FRANCISCO, CAL.....	681 Market St.	R. V. HOLDER, General Agent
SEATTLE, WASH.....	4th Ave. & Union St.	H. L. SISLER, General Agent
SIoux CITY, IOWA.....	522 Nebraska St.	O. C. SCHERER, D. F. & P. A. L. J. NICKELSEN, General Agent
SIoux FALLS, S. D.....	424 E. Eighth St.	J. J. SULLIVAN, General Agent
SPOKANE, WASH.....	615 Old National Bank Bldg.	L. M. KILBURG, General Agent
TACOMA, WASH.....	1011 Rust Bldg.	W. C. DONOVAN, Traveling Agent
TULSA, OKLA.....	425 Kennedy Bldg.	G. S. DONALDSON, General Agent
WINNIPEG, MAN.....	218 Curry Bldg.	H. T. KIRBY, General Agent
WINONA, MINN.....		H. J. WAGEN, D. F. & P. A.

C. A. CAIRNS
Passenger Traffic Manager

A. R. GOULD
Asst. Passenger Traffic Manager

R. THOMSON
Asst. Passenger Traffic Mgr.

M. R. LEAHY
General Passenger Agent

C. R. CUSTER
Asst. General Passenger Agent

CHICAGO & NORTH WESTERN RAILWAY COMPANY

400 West Madison St., CHICAGO

W. L. MANSFIELD
General Pass'r Agent
81 E. Fifth St., St. Paul

E. L. PARDEE
Passenger Traffic Mgr.
275 E. 4th St., St. Paul

F. A. BROWN
General Pass'r Agent
Marquette Ave. at 7th, Minneapolis

Chicago, St. Paul, Minneapolis & Omaha Railway Company

