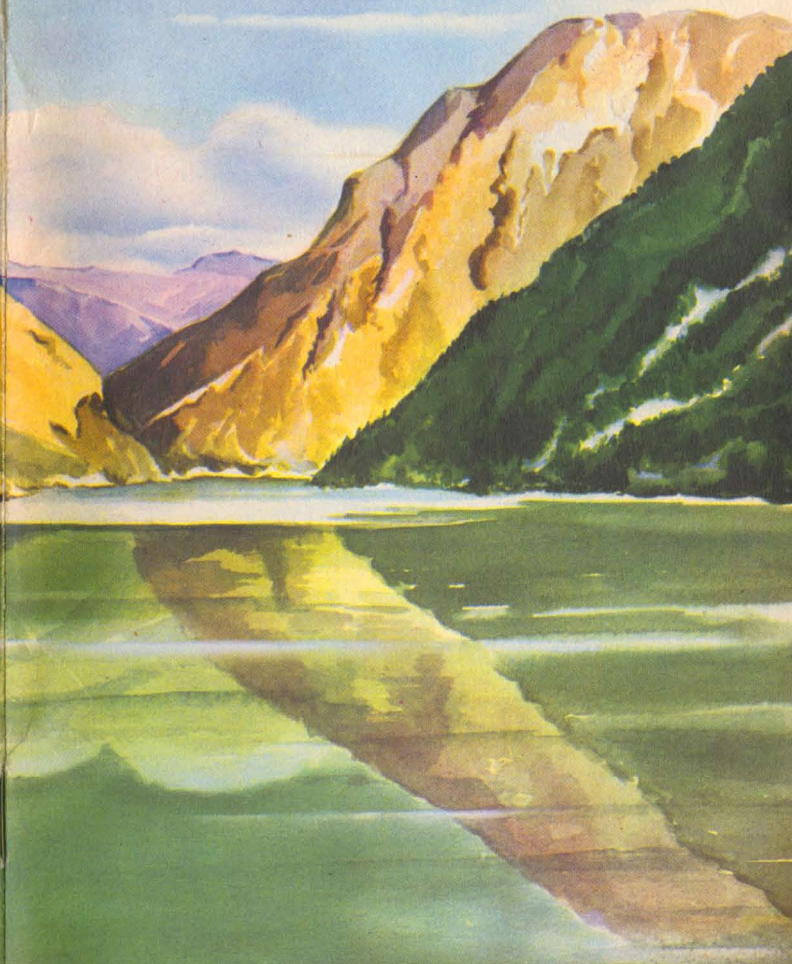


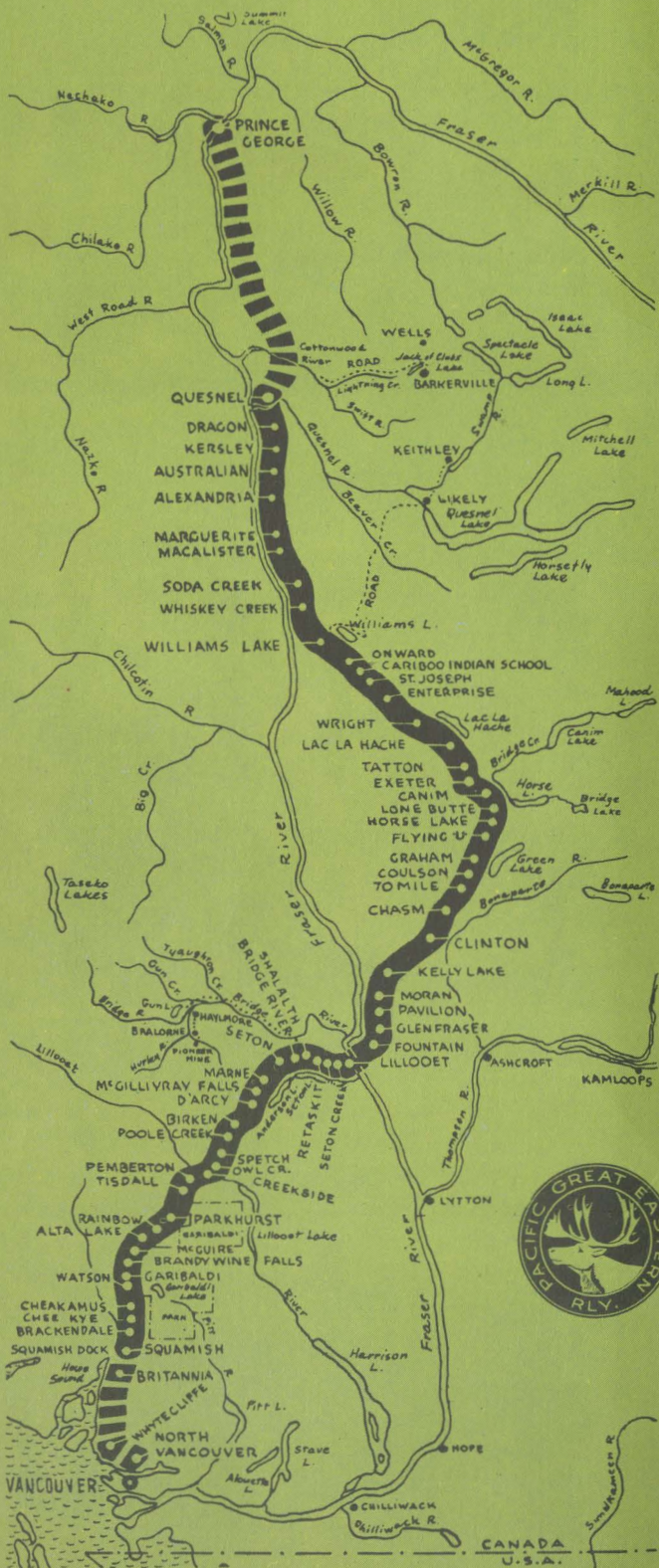
1949

Pacific Great Eastern

"THE FRIENDLY RAILWAY"



Peton Lake

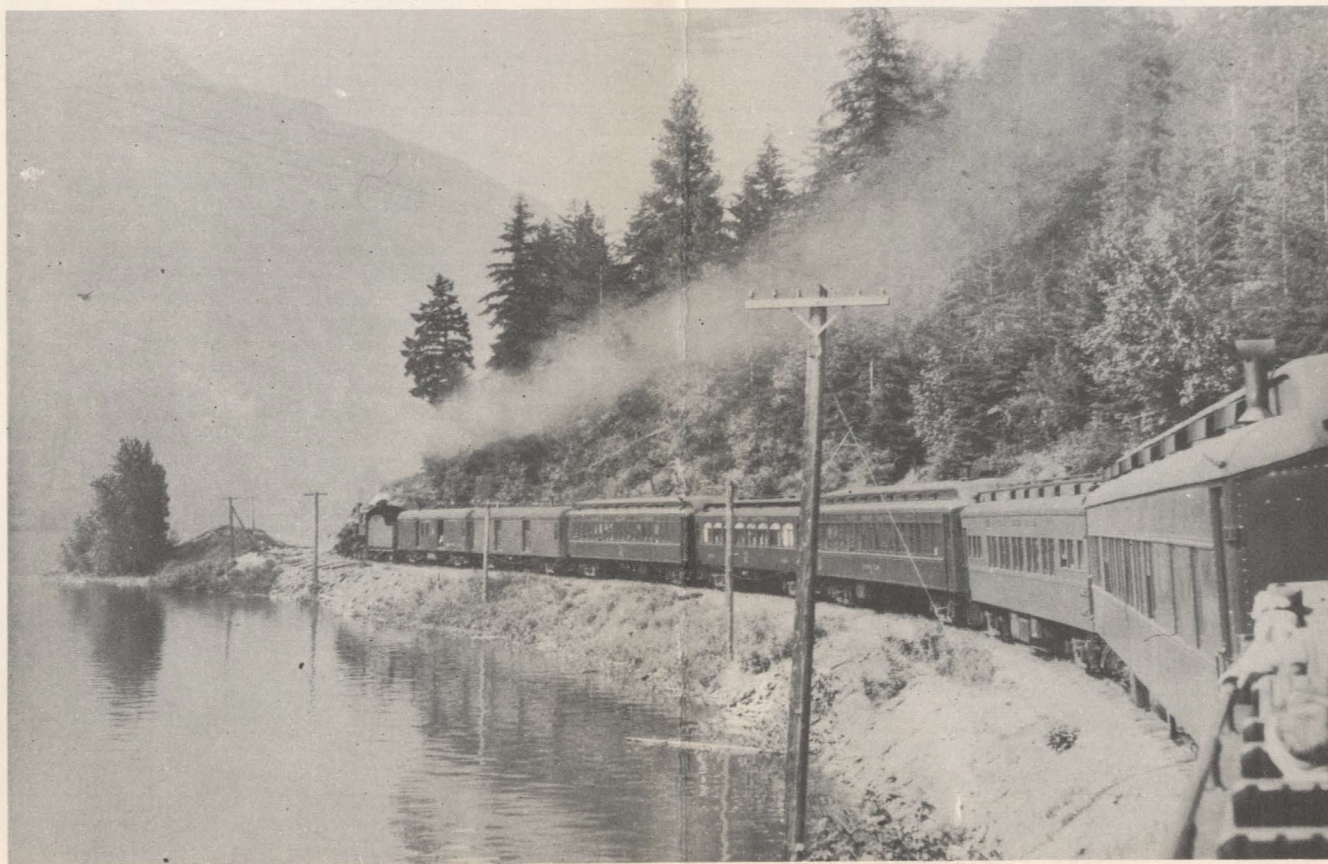




"HELLO VISITOR"



WELCOME TO BRITISH COLUMBIA



Pacific Great Eastern Railway

"The Scenic Route of British Columbia"

"Rails To Romance"

IN A COUNTRY FAMED FOR WESTERN HOSPITALITY

This rugged, scenic area served by the Pacific Great Eastern is a land of descriptive names, many marking historic incidents, remembered and recounted by the scattering of old-timers who still survive.

It is a country famed for its Western hospitality, hearty welcome, deep friendships and fierce loyalty. It is land of simplicity, basic things, and energetic action.

Names along the line that stir reminiscences are legion. There is "70-Mile", a link with the old stage-coach days, so named for its distance from Lillooet, starting point of the journey.

Others are "The Chasm", a thousand-foot deep gash called the Grand Canyon of the Cariboo; Lone Butte, Whiskey Creek and, appropriately, Soda Creek nearby.

Soda Creek was the coach-line terminus until 1865 when the road was completed to Quesnel, formerly reached by the Fraser River.

TRAVEL IN COMFORT THE TRAIL OF THE GOLD-SEEKERS VIA PACIFIC GREAT EASTERN RAILWAY

Fabulous fortunes were made and lost in the roaring days of the Gold Rush in British Columbia's Cariboo country—and the Pacific Great Eastern Railway travels the trails of those intrepid pioneers.

Modern methods in mining technique have supplanted the primitive pan, sluice-boxes and rockers, but it is often possible to see the relics and landmarks left by those early miners; of workings which produced fortunes and are still subjects of fantastic yarns.

Famed as a landmark of the Gold Rush Days of the late '50s and '60s is Barkerville, sixty miles east of Quesnel. This romantic centre, where many of the original buildings have withstood the ravages of time, is reached by highway, which passes through Lightning Creek, placer-mining centre, and Wells, where the famous Cariboo Gold Quartz and Island Mountain mines are located.

COMBINED RAIL AND WATER TRIPS OF A LIFETIME

Within a few short hours of Vancouver the Pacific Great Eastern Railroad offers vacationists unrivalled scenic beauty at unbelievably low cost. Both factors are important in these hurried, busy days—but even more important is your HEALTH.

Pause and reflect on the sheer enjoyment of a comfortable 3-hour trip by Union Steamship through the sheltered waters of Howe Sound to Squamish, where the Pacific Great Eastern Train is awaiting you at the Dock.

Board this train and thrill to the rugged beauty of the Cheakamus canyon to Garibaldi Park, four hundred square miles of snow-clad mountain peaks, alpine meadows carpeted with wild and colorful flowers, great glaciers, and sylvan lakes. Well-stocked streams and lakes beckon the fisherman. Resorts and hunting lodges provide comfort. Breathtaking in its magnificence is Brandywine Falls, a cataract that drops a sheer 200 feet, an unforgettable sight. Many resorts invite the vacationist to indulge in fishing, swimming, hiking, riding, boating and dancing.

Pemberton Indian baskets have always intrigued the interest of the traveller, while fishing and hunting facilities are unlimited throughout this area.

Beyond D'Arcy, rugged mountain terrain yields to the dry-belt of bracing air and bright sunshine that prevails from March to October. Here are found the sage-brush and great cacti associated with rolling range-lands.

Beyond D'Arcy, rugged mountain terrain yields to the dry-belt of bracing air and bright sunshine that prevails from

March to October. Here are found the sage-brush and aspen groves associated with rolling cattle ranges.

The site of a great electric power development may be seen at Bridge River, and within easy motoring distance of Shalalth are the famous Bridge River mines — Pioneer and Bralorne.

Lillooet, the original starting point of the famous Cariboo Highway, is an important centre on the Fraser River, in the heart of an agricultural and mining district, and is noted for its fruit and vegetable production. A short distance from Lillooet is the Yalakom Game Reserve.

The mighty Fraser River and the great canyon it has carved, is seen at its incomparable best from the Pacific Great Eastern in its climb from Lillooet to Kelly Lake, entrance to the ranch and cattle country. And a sight of imposing grandeur is the thousand-foot deep "Chasm", known as the "Grand Canyon of the Cariboo".

Picturesque Stampedes and Frontier Day celebrations recall that the Cariboo country is one of the last great ranching areas of the West.

Quesnel, temporary terminus of the Pacific Great Eastern, is famed in the annals of fur-trading and gold-rush days. It is a link with the romantic past, and much of the pioneering atmosphere still remains. The Quesnel district offers the big-game hunter some of the finest country anywhere on the continent for sport. Cariboo, moose, deer, black and grizzly bear abound in this terrain and offer a challenge to the skill of the most experienced hunter.

TO ARRANGE FOR THIS OUTSTANDING TRIP

Get in touch with your nearest Rail or Travel Agent, who will gladly give you full particulars as to transportation and reservations. If you are unable to get this information in your area, please write direct to the General Passenger Department.

GENERAL PASSENGER DEPARTMENT PACIFIC GREAT EASTERN RAILWAY

736 Granville Street, Vancouver, B. C.

Phone MARine 3338



CHEAKAMUS CANYON

ALL EXPENSE TOUR "A"

A COMBINED THREE DAY RAIL AND WATER VACATION

THE TRIP OF A LIFETIME - OUR VERY BEST

THIS OUTSTANDING ALL EXPENSE HOLIDAY TRIP IS ON SALE ONLY DURING THE MONTHS OF

JUNE

JULY

AUGUST

SEPTEMBER

A most reasonably priced Tour amid the wonderful Scenic Beauty of Central and Northern British Columbia. The All-Inclusive Cost of this Rail and Water Combination Trip covers the following items:

1. Transportation — Rail and Water — Vancouver to Quesnel and return.
2. Standard Sleeping Car Berths or Rooms as desired — Squamish Dock to Quesnel and return.
3. All meals in Dining Car—Squamish Dock to Quesnel and return.
4. "Tour A" Drive, or alternatives; also Luncheon, during stop-over at Quesnel.

THE TRIP

LEAVES VANCOUVER, B. C., AT 9:30 A.M. FROM UNION STEAMSHIP DOCK, FOOT OF CARRALL STREET, EACH MONDAY, WEDNESDAY AND FRIDAY
JUNE THROUGH SEPTEMBER

FIRST DAY

Mon., Wed., Fri.

9:30 a.m. Daylight Saving Time—Board Steamship at Union Steamship Dock, foot of Carrall Street, Vancouver, B. C., for a three-hour Cruise on beautiful Howe Sound, en route to Squamish Dock, B. C., the Southern Terminal of the Pacific Great Eastern Railway.

On arrival at Squamish Dock transfer is made immediately to the awaiting Pacific Great Eastern Railway Train, where Luncheon will be served in the Dining Car.

2:00 p.m.—Leaving Squamish Dock, you enter almost immediately, via Cheakamus Canyon, into the finest Scenic areas of Central British Columbia, including the famous Cariboo Country. Due to the long summer days and late twilights, at this season of the year, you will have ample opportunity to enjoy the panorama of great beauty from the open Observation Car on the rear of the Train.

5:30 p.m.—Dinner is served in the Dining Car.

SECOND DAY

Tues., Thurs., Sat.

Before arriving at Quesnel Passengers may view Ranch and Upper Fraser River scenery from the Train. Over this section of

the Upper Fraser it may be interesting to note that prior to the advent of the Railway transportation was by Steamer from Soda Creek to Quesnel and beyond.

8:00 a.m.—Arrive at Quesnel, B. C., old Frontier Town and the present Northern Terminal of the Pacific Great Eastern Railway. Quesnel is a Town that has retained its Frontier atmosphere and many historical reminders of Pioneer days. It will also furnish a variety of photographic material to remind you of a very pleasant trip.

You may leave your hand baggage, etc., in your Sleeping Car space, as these Sleeping Cars will be parked for your convenience and occupancy throughout the day.

Immediately after detraining at Quesnel, motor equipment of the "Quesnel Taxi" will be on hand at the Station platform to transport Tour "A" Passengers from the Station to the Nugget Cafe for Breakfast.

After Breakfast, the balance of the morning is free time to visit Stores and explore other historic features of Quesnel, or to take advantage of the various alternatives offered.

12 noon—Luncheon will be served at the Nugget Cafe in Quesnel.

1:30 p.m. — Motor equipment will be waiting at the "Quesnel Taxi" Office to take Passengers holding Tour "A" Drive Tickets, on the regular Scenic Drive Trip of four hours in this area, or, if the minimum number required is obtained, on the alternative Drive or Fishing Trip.

Alternative Drive or Fishing Trip at Quesnel

(a) A Drive to the Gold Mining areas of Wells and Barkerville will be made if a minimum number of four (4) Passengers holding Tour "A" Drive Tickets, so desire.

(b) A Fishing Trip to 6-Mile Lake will be made, if a minimum number of (2) Passengers holding Tour "A" Drive Tickets, so desire. Boats and Tackle will be available.

6:00 p.m.—Dinner will be served at the Nugget Cafe in Quesnel.

7:30 p.m.—Tour "A" Passengers, if they so desire, will be driven from the "Quesnel Taxi" Office to the Train.

7:45 p.m.—Leave Quesnel for the return trip to Vancouver. The early departure of the Train and the long twilights of this Northern Country will give you an excellent opportunity to view scenery missed on the Northern Trip.

THIRD DAY

Wed., Fri., Sun.

7:30 a.m.—Breakfast will be served in the Dining Car.

Throughout this day you will have an excellent opportunity of enjoying, from the Open Observation Car, the superb Scenic Beauty between Lillooet and Squamish, B. C.

12 Noon—Luncheon will be served in the Dining Car to all Tour Passengers before arrival at Squamish Dock.

On arrival at Squamish Dock, transfer is made immediately to the awaiting Steamship for Vancouver, B. C.

A beautiful cruise of three hours on famous Howe Sound. A fitting end to a wonderful trip.

7:00 p.m.—Arrive at Union Steamship Dock, Vancouver, B. C., after three days of the Finest Vacation on this Continent.

THE COST OF TOUR A — INCLUDING CANADIAN REVENUE TAX

	Each Person
A-1 One person in a Lower Standard Berth.....	\$50.00
A-2 Two persons in a Lower Standard Berth.....	46.00
A-3 One person in an Upper Standard Berth.....	48.00
A-4 One person in a Compartment.....	65.00
A-5 Two persons in a Compartment.....	55.00
A-6 One person in a Drawing Room.....	75.00
A-7 Two persons in a Drawing Room.....	60.00
For each additional person over two in Drawing Room or Compartment.....	48.00

THERE IS NO OTHER EXPENSE

HOW TO ARRANGE FOR THIS TOUR

1. Get in touch with your nearest Rail or Travel Agent, and select your date of departure from Vancouver, B. C., with an alternative date.

2. Early reservations are necessary to obtain desirable Sleeping Car accommodation, as space is usually at a premium during vacation period.

3. Your Rail or Travel Agent, on payment of the Tour Cost, will be glad to secure for you, before leaving on your Trip, all Tickets covering Transportation, (Rail and Water), Sleeping Car Berths, Meals and Drive.

4. If you cannot complete arrangements in your vicinity, do not hesitate to write direct to the General Passenger Department, enclosing at the same time Cashier's cheque, Bank Draft or Money Order (not personal cheque) in favour of the Pacific Great Eastern Railway, covering the cost of the Tour selected, on receipt of which all Tickets covering Transportation (Rail and Water), Sleeping Car Accommodation, all meals in Dining Cars, also Luncheon and Drive at Quesnel, will be forwarded immediately by "Registered Mail" to your address.

T. W. McDonough

GENERAL PASSENGER AGENT

PACIFIC GREAT EASTERN RAILWAY

736 GRANVILLE STREET

VANCOUVER, B. C.

PHONE MARine 3338



SETON LAKE

VISITORS TO VANCOUVER, B.C.

WHO DESIRE TO ENJOY WITHIN A SHORT SPACE OF TIME THE SUPERB SCENIC BEAUTY OF

CENTRAL BRITISH COLUMBIA THE PACIFIC GREAT EASTERN RAILWAY OFFERS

ALL EXPENSE TOUR "B-1" "B-2"

These combined Rail and Water Trips from Vancouver, B. C., which take the Visitor through the finest Scenic Beauty of Central British Columbia into the very heart of the Cariboo-Lillooet, B. C.

Passengers will enjoy breathtaking vistas of snow-capped Mountains, Roaring Waterfalls, Tumbling Streams and Gem-like Lakes fed by glacial ice-fields. Nature has indeed lavished her bounty on British Columbia and the Pacific Great Eastern Railway with engineering ingenuity penetrates the very heart of it, to provide a veritable Vacationland of unparalleled beauty.

These Combination "All-Expense Tours" for which no advance reservations are required are on sale during months June to September inclusive. **The cost includes the following items: (there is positively no other expense).**

1. Transportation, including Rail and Water, Vancouver, B. C., to Lillooet, B. C., and Return.
2. Open Top Observation Car privileges, Squamish Dock to Lillooet, B. C., and Return.
3. All meals in Dining Cars, Squamish Dock to Lillooet, B. C., and Return.
4. Motor Transfer, Lillooet Station to Craig Lodge.
5. **NOTE—Tour B-2 same as above except that it includes two nights stay and all meals second day at Craig Lodge.**

ALL EXPENSE TOUR "B-1"

A COMBINED TWO-DAY RAIL-AND-WATER VACATION

Cost \$25.00 — Revenue Tax Included

NO OTHER EXPENSE

As no reservations are required for this Tour, accommodation is available at any time between June 1st to September 10th inclusive.

TOUR B-1—Leave Vancouver, B. C., daily, except Sunday, June 1st to September 10th, inclusive, at 9:30 a.m. from Union Steamship Dock, foot of Carrall Street.

All Times Shown Herein are Daylight Saving Time

FIRST DAY

9:30 a.m. Daylight Saving Time—Board Union Steamship for a Three-Hour Cruise on beautiful Howe Sound en route to Squamish Dock, B. C., the Southern Terminal of the Pacific Great Eastern Railway. On arrival Squamish Dock, immediate transfer is made to the awaiting Pacific Great Eastern Railway Train, where Luncheon will be served in the Dining Car.

2:00 p.m.—Leave Squamish Dock. The Visitor is almost immediately transported via the famous "Cheakamus Canyon" into the finest Scenic Areas of Central British Columbia en route to Lillooet, B. C., the very heart of the Cariboo country.

From the open Observation Car, Passengers are afforded every opportunity of viewing the wonderful panoramic beauty which unfolds with every mile. Majestic mountains, crystal clear Lakes and Magnificent Waterfalls are outstanding features of this Area. Owing to the long summer days and late twilights at this Season of the year, Passengers will have ample opportunity to enjoy from the open Observation Car, the scenic beauty en route.

5:30 p.m.—Dinner is served in the Dining Car.

8:30 p.m.—Arrive at Lillooet, B. C. At this point, Passengers will be met and transferred by motor for overnight stay at Craig Lodge, a delightful location on lovely Seton Lake.

SECOND DAY

8:00 a.m.—Leave Craig Lodge daily, except Monday, June to September inclusive. Board train at Craig Lodge.

Breakfast will be served in the Dining Car. On the return trip, Passengers will have an excellent opportunity to again view in the morning light the superb scenery from the open Observation Car, which they may have missed on the Northbound Trip.

12 noon—Luncheon will be served in the Dining Car.

3:20 p.m.—Arrive Squamish Dock and transfer immediately to the awaiting Steamship for another cruise of three hours on Howe Sound to Vancouver, B. C., a fitting end to an outstanding trip.

7:00 p.m.—Arrive at Union Steamship Dock, Vancouver, British Columbia.

A COMBINED THREE-DAY RAIL AND WATER VACATION

Cost \$30.00—Revenue Tax Included

NO OTHER EXPENSE

TOUR B-2—Leave Vancouver, B. C., daily except Saturday, June 1st to September 9th inclusive, at 9:30 a.m., from Union Steamship Dock, foot of Carrall Street.

All Times Shown Herein are Daylight Saving Time

FIRST DAY

9:30 a.m.—First Day is the same as shown in Tour B-1.

SECOND DAY

All Day Stop-over at Craig Lodge, including Meals Second Day and over-night accommodation both first and second nights. Craig Lodge with good accommodation is located on the shore of beautiful Seton Lake, overlooking snow-capped mountains.

Excellent Fishing, Trail Rides and Scenic Trips are available. Swimming in Seton Lake—Special Pool for children.

THIRD DAY

8:00 a.m.—Leave Craig Lodge Daily, except Monday, June to September inclusive. Board train at Craig Lodge. Breakfast will be served in the Dining Car. The return trip through this exceptionally fine Scenic Area will unfold from the open Observation Car many wonderful beauties missed on the Northbound Trip.

12 noon—Luncheon will be served in the Dining Car.

3:20 p.m.—Arrive Squamish Dock and Transfer immediately to the awaiting Steamship for a Three-Hour Cruise on scenic Howe Sound to Vancouver, B. C., and the end of an outstanding economical Sightseeing Trip.

7:00 p.m.—Arrive at Union Steamship Dock, Vancouver, British Columbia.

HOW TO ARRANGE FOR THESE TOURS

As no reservations are required for these Tours, accommodation is available at any time June to September, inclusive.

1. Get in touch with your nearest Rail or Travel Agent and secure your tickets before arriving at Vancouver, B. C.

2. If you cannot complete arrangements in your vicinity, do not hesitate to write direct to the General Passenger Department, enclosing with your letter, Cashier's Cheque, Bank Draft or Money Order (not personal cheque) in favor of the Pacific Great Eastern Railway covering the cost of the tour selected, on receipt of which all tickets covering your tour will be forwarded immediately by "Registered Mail" to your address.

T. W. McDonough

GENERAL PASSENGER AGENT

PACIFIC GREAT EASTERN RAILWAY

736 GRANVILLE STREET

VANCOUVER, B. C.

PHONE MARine 3338

TOUR B-3

TRANSPORTATION ONLY

COST \$38.60

"THE TRIPLE CANYON TOUR"**Via THE FRASER-THOMPSON-CHEAKAMUS CANYONS****A COMBINED
BUS-RAIL-STEAMSHIP THREE DAY VACATION
THROUGH BRITISH COLUMBIA'S SCENIC HINTERLAND****From Vancouver, B. C. to Quesnel and Return
Each Monday-Wednesday-Friday, June Through September
All Times Shown Herein are Daylight Saving Time****GOING**

This Tour leaves Vancouver, B. C., at 8:00 a.m. and 1:30 p.m., each Monday, Wednesday and Friday from Bus Depot., 150 Dunsmuir Street, via comfortable Greyhound Coach Lines. Passing through the City of New Westminster, the first Capital of British Columbia, we cross the wide reaches of the Fraser River over the Pattullo Bridge, and proceed through a mixed farming country to Abbotsford. Much of the Highway here is one of the Dykes that was built to withstand the floods of the mighty Fraser and its tributaries. Continuing eastward, we arrive at the progressive town of Chilliwack, B. C.

Leaving Chilliwack, the route lies over a good highway skirting the base of the majestic "Hope Mountains" of the "Coast Range". Thence on to the attractive village of Hope, a distance of 100 miles from Vancouver, B. C. Leaving Hope, the Mountain Highway commences to thrust its way through the Lower Fraser Canyon. The village of Yale is now reached. This settlement, rich in historic lore, was originally the head of navigation on the Fraser River.

From Yale onward, we follow the Trail travelled on foot by the Gold Miners over one hundred years ago into the great Cariboo country, and the Gold Mining town of Barkerville. A stop is made at "Hell's Gate" to view the "Fish Ladders". Leaving this point, we proceed through the "Cascade Range" over Jackass Mountain and descend to Lytton, where the Thompson River joins the Fraser. This is a spectacular sight.

Leaving Lytton we now pass through the "Thompson Canyon", with its towering ramparts of marble-coloured granite, to Spence's Bridge, and in due course arrive at the town of Ashcroft, where we remain overnight. At this point, Hotel accommodation is available to Tour B-3 Passengers.

We leave Ashcroft at 7:30 a.m. the following morning, crossing the Thompson River to climb steeply through sagebrush studded sand hills on either side. Soon we are travelling due north along the high rim of the Bonaparte River. Passing "The Bluffs", which are painted by Nature in gorgeous hues, we arrive at Clinton.

Leaving Clinton we climb to a plateau, on which we find vast Forests, Cattle Ranches, Dude Ranches and Holiday Resorts. Beyond the famous 100 Mile House, we come to Lac La Hache, and skirting its shores, eventually arrive at Williams Lake, British Columbia's largest Beef Cattle distributing point, which is served by the Pacific Great Eastern Railway.

Leaving Williams Lake and continuing Northward, at Soda Creek we again meet the mighty Fraser River, which we left at Lytton the previous day, and follow this River until arrival at Quesnel, where, after a short stay of 2 1/2 hours, Transfer is made to the Pacific Great Eastern Railway for the return trip. At this point Passengers may, if they so desire, reserve Sleeping Car

accommodation on the Railway and thus enjoy the privileges of the Open Top Observation Car from Quesnel to Squamish Dock, B. C.

RETURNING

Leave Quesnel at 7:45 p.m. each Tuesday, Thursday or Saturday, we view before darkness falls, that part of the Upper Fraser country which we have previously missed, including the Trestle Bridge, 1194 ft. long, over which the Railway passes 286 ft. above Deep Creek. This structure, when built, was the highest Railway Viaduct in the British Empire. During the night we will pass through the country you have already seen, including such districts as Williams Lake, Lac La Hache and Clinton. Leaving Clinton, the early riser will be rewarded with a scene of another Canyon of the Fraser River, which instead of having worn its way through rocky gorges during the passage of time, is now 2000 ft. below in a Canyon of Clay and Silt. Erosions of incredible extent have formed a weird spectacle for our enraptured gaze, best described as a "Fantastic surrealist panorama". The grade now quickly descends around Pavilion Mountain until we cross the Fraser, previously 2000 ft. below us, into the town of Lillooet, over a bridge 265 ft. above the River.

Leaving Lillooet, we bid Farewell to the Fraser River as we wind our way through the "Cascade Range" of Mountains, whose snow-capped peaks seem to pierce the very skies, and skirt the solid rock ledges of beautiful Seton and Anderson Lakes. At Shalalth on Seton Lake, a Power Project of the British Columbia Power Company is now under construction, which is one of the outstanding Engineering feats of all Time. When finally completed, it will develop 620,000 Horse Power of Electricity, to be carried to the Industrial areas of British Columbia. Proceeding on our journey, we pass many more Mountain Lakes and Streams until we arrive at Pemberton, where the Lillooet River is crossed. At this point a reclamation scheme of the Dominion and Provincial Governments will drain an area of 25,000 acres of the finest and richest Farming and Dairy land in British Columbia.

Leaving Pemberton, we re-enter a mountain area, which is famous for its cascading streams, notably Green River and its spectacular Falls, until we reach Alta Lake, which is the "Summit" of the "Coast Range", and from which point (Alta Lake), the waters churn their turbulent way easterly and westerly.

Leaving Alta Lake, and passing Brandywine Waterfall, which, beneath us, hurtles down its perpendicular 200 ft. precipice, we once again enter another famous Canyon called "The Cheakamus", with its River of the same name, boiling and leaping through its tortuous course, while the Black Tusk and Garibaldi Mountains with their magnetic appeal, compete for our wonderment. A veritable photographer's paradise extends all the way to Squamish Dock on Howe Sound, the Southern Terminal of the Pacific Great Eastern Railway.

We now transfer from Train to Steamship for a Three-Hour Cruise through one of the outstanding fjords of the Pacific Coast en route to Vancouver, B. C., the original starting point of our trip, where we arrive each Wednesday, Friday and Sunday at 7:00 p.m.

**THIS COMPLETES WITHIN THE SHORTEST POSSIBLE TIME
AND DISTANCE, A TOUR WHICH HAS NO EQUAL IN
DIVERSIFIED SCENIC TRAVEL ON THIS CONTINENT**

TOUR B-4

TRANSPORTATION ONLY

COST \$18.00

"The Route of the Royal Engineers" Via Lytton and the Fraser River Canyon

A COMBINED BUS-RAIL-STEAMSHIP TWO-DAY VACATION

Through British Columbia's Scenic Wonderland
From Vancouver, B. C. to Lillooet, B. C. and Return
Leaves Vancouver Daily except Sunday
Leaves Lillooet Daily except Monday
This Tour can be reversed if desired
All Times Shown Herein are Daylight Saving Time

GOING

The Tour leaves Vancouver, B. C., at 6:30 a.m. Daylight Saving Time Daily, except Sunday, from 439 Dunsmuir Street, by comfortable Buses of the Neal Evans Transportation Company, and follows a route rich in the tradition left by the "Royal Engineers". Through New Westminster, first Capital of British Columbia, we journey to Langley, site of old Fort Langley, where this hardy band built the first Fort on the Lower Mainland of the original Crown Colony of New Caledonia.

Leaving Langley, our eyes rest on the ever-green farm lands which surround Abbotsford, Chilliwack and Rosedale. Thence by an excellent highway to Hope, an early Trading Post of the Hudson's Bay Company. Hope is a fast growing little town, with a pleasing appearance and a wonderful location. Passing Hope we continue on to Yale.

At Yale, where first the "Royal Engineers", and later Henry Onderdonk with his hardy Construction Crews, made their Headquarters during the building of permanent Traffic Ways through the Fraser Canyon. Leaving Yale we travel up the Fraser River Canyon for about 60 miles to Lytton, meeting place of the waters of the Fraser and Thompson Rivers.

Travelling today through this vast area on good highways hewn from solid rock, we can visualize and appreciate the tremendous difficulties faced by the Pioneers of this Route, braving as they did hostile Indian bands, and Nature's unpredictable moods. Leaving Lytton en route to Lillooet, we follow the Fraser River along its bench lands, seeing at many places evidence left by the early Placer Miners who panned gold along the River Banks. Arrive Lillooet 3:30 p.m.

Lillooet—what a name to conjure visions in our minds of the early Gold Rush, and here were joined the two early alternate routes to the Northern Mines, the first of which we have described briefly; the other through Harrison to Pemberton, skirting the present Pacific Great Eastern Railway Route between Lillooet and Pemberton. Today Lillooet could easily double for

parts of sunny California with its balmy climate, rolling hills and sage-brush covered bench lands, gradually being cultivated to grow Tomatoes, Cantaloupes and many other fruits and vegetables. Truly this is the Route of the Royal Engineers and early Gold Seekers who did so much to open up the hinterland of British Columbia. Tours Passengers remain overnight at Lillooet and leave the following morning on the return portion of this Tour.

If this Tour is reversed, Passengers leave Lillooet by Bus at 10:00 a.m. and arrive Vancouver at 6:30 p.m.

RETURNING

Leaving Lillooet Daily except Monday, at 8:00 a.m., via Pacific Great Eastern Railway, we bid farewell to the Fraser River as we wind our way through the "Cascade Range" of Mountains, whose snow-capped peaks seem to pierce the very skies, and skirt the solid rock ledges of beautiful Seton and Anderson Lakes. At Shalalth on Seton Lake, a Power Project of the British Columbia Power Company is now under construction, which is one of the outstanding Engineering feats of all Time. When finally completed, it will develop 620,000 Horse Power of Electricity, to be carried to the Industrial areas of British Columbia. Proceeding on our journey, we pass many more Mountain Lakes and Streams until we arrive at Pemberton, where the Lillooet River is crossed. At this point a reclamation scheme of the Dominion and Provincial Governments will drain an area of 25,000 acres of the finest and richest Farming and Dairy land in British Columbia.

Leaving Pemberton, we re-enter a mountain area, which is famous for its cascading streams, notably Green River and its spectacular Falls, until we reach Alta Lake, which is the "Summit" of the "Coast Range", and from which point (Alta Lake), the waters churn their turbulent way easterly and westerly.

Leaving Alta Lake, and passing Brandywine Waterfall, which, beneath us, hurtles down its perpendicular 200 ft. precipice, we once again enter another famous Canyon called "The Cheakamus", with its River of the same name, boiling and leaping through its tortuous course, while the Black Tusk and Garibaldi Mountains with their magnetic appeal, compete for our wonderment. A veritable photographer's paradise extends all the way to Squamish Dock on Howe Sound, the Southern Terminal of the Pacific Great Eastern Railway.

We now transfer from Train to Steamship for a Three-Hour Cruise through one of the outstanding fjords of the Pacific Coast en route to Vancouver, B. C., the original starting point of our trip, where we arrive each Wednesday, Friday and Sunday at 7:00 p.m.

During this Two-Day Trip the Traveller has the opportunity of viewing varied scenery, and the Student of our provincial history—many places, the names of which will remain in memory throughout the years.

FOR YOUR
COMFORT and ENJOYMENT
CAMPS - HOTELS - LODGES - RANCHES - RESORTS
served by
PACIFIC GREAT EASTERN RAILWAY
"The Scenic Route of British Columbia"

It is Important

After you have made a selection from the various types of accommodation listed herein, THAT YOU WRITE DIRECT to the management concerned for confirmed reservations or if you desire more detailed information. The rates shown herein for Camps, Hotels, Lodges, Ranches, Resorts, etc., were quoted by their Proprietors prior to January 15th, 1949, and are subject to change.

★★★★ GOVERNMENT GRADING

SQUAMISH DISTRICT

NEWPORT HOTEL

Proprietor..... Arthur E. Gross, Manager
P. O. Address..... Squamish, B. C.
Open..... All year
Nearest Station..... Squamish, B. C.
Distance from Station..... One Block
Transportation..... Taxi Available
Accommodation—Hotel rooms, electric light, running water in all rooms.
Rates—Single, per day, \$2.00; Double per day, \$3.00.
Attractions—Skiing, Fishing, Boating, Riding, Hiking.

SQUAMISH DISTRICT

HOTEL SQUAMISH

Fully Licensed Premises

Proprietor..... A. Sullivan
P. O. Address..... Box 33, Squamish, B. C.
Open..... All Year
Nearest Station..... Squamish, B. C.
Distance from Station..... Two Blocks
Transportation..... Taxi Available
Accommodation—Hotel rooms, running hot and cold water; hot water heating, electric lights, spring-filled mattresses on all beds. Cafe in connection. Open from 6:45 a.m. till midnight.
Rates—Single, per day, \$2.00; Double, per day, \$3.00.
Attractions—Fishing, Swimming, Riding, Hiking, Dancing.

GARIBALDI DISTRICT

ALPINE LODGE

Proprietor..... Alpine Lodge (Crane's) Ltd.
P. O. Address..... Garibaldi, B. C.
Open..... May - October
Nearest Station..... Garibaldi, B. C.
Distance from Station..... 200 yards
Transportation..... Not required
Accommodation—Hotel rooms and bedroom-cottages, fully serviced, electric light and running water.
Rates, including meals—Single, \$6.00 per day; \$42.00 per week. Double, \$10.00 per day; \$70.00 per week.
Attractions—Fishing, Boating, Hiking, Riding, Dancing, Swimming. The Gateway to Garibaldi Park, British Columbia's Scenic Wonderland.

GARIBALDI DISTRICT

GARIBALDI LODGE

Proprietor..... Mr. and Mrs. M. Boyd
P. O. Address..... Garibaldi, B. C.
Open..... May 1st - November 1st
Nearest Station..... Garibaldi, B. C.
Distance from Station..... 1/4 mile
Transportation..... Included in rates
Accommodation—Completely furnished cabins fronting on Lucille Lake. Electric lights, flush toilets, running water, spring-filled mattresses, Kenwood blankets.
Rates, including meals—Single, per day, \$5.50; Double, per day, \$10.50.
Attractions—Fishing, Boating, Swimming, Riding, Hiking. We operate pack trains and trail rides into Garibaldi Park and Black Tusk Meadows. Write direct to Garibaldi Lodge for further information and reservations.

ALTA LAKE DISTRICT

JORDAN'S LODGE

Proprietor..... R. A. Jordan
 P. O. Address..... Alta Lake, B. C.
 Open..... May 1 to September 30
 Nearest Station..... Jordan's Lodge
 Distance from Station..... Three minutes
 Transportation..... Included in rates
Accommodation—Housekeeping cabins with pillows, blankets and comforters supplied. Coal oil lamps, pump water.
Rates—Cabins, \$3.00 per day. Cabins and boat on Nita Lake, \$15.50 per week. No meals served.
Attractions—Good Fishing, Boating, Swimming and Hiking. Boats on Alpha Lake and fishing tackle for rent.

ALTA LAKE DISTRICT

BOB'S POINT

Proprietor..... Mr. Bob Mansell
 P. O. Address..... Alta Lake, B. C.
 Open..... May 1 to October 1
 Nearest Station..... Rainbow, B. C.
 Distance from Station..... 1/4 mile
 Transportation..... Included in rates
Accommodation—Fully furnished housekeeping cabins on Alta Lake. Pillows, blankets supplied. Electric light.
Rates—\$20.00 per week per cabin for one or two persons. For each additional person, \$2.50.
Attractions—All cabins overlooking Alta Lake. Beautiful Mountain scenery, elevation 2200 ft. An ideal place to spend your vacation. Riding, Dancing, Fishing, Hiking, Boating and Swimming.

ALTA LAKE DISTRICT

HILLCREST SUMMER RESORT

Proprietor..... J. W. Mansell
 P. O. Address..... Alta Lake, Altitude 2200 feet
 Open..... May 1 to October 1
 Nearest Station..... Alta Lake
 Distance from Station..... 1/4 mile
 Transportation..... Included in rates
Accommodation—Spacious main Lodge for dining and dancing. Log Cabins completely furnished, electric light, spring filled beds, excellent meals.
Rates, including meals—Single, per day, \$5.50; Double, per day, \$10.00. Children, under 12, \$3.00.
Attractions—Novelty Games, Swimming, Hiking, Boating, Fishing, Riding, Dancing, Good Trout Fishing, boats available.

ALTA LAKE DISTRICT

RAINBOW LODGE

Proprietor..... J. Alex Greenwood
 P. O. Address..... Alta Lake, B. C.
 Open..... May 1st to October 15th
 Nearest Station..... Rainbow, B. C.
 Distance from Station..... 200 feet
 Transportation..... Not required, at Station
Accommodation—10 Rooms in Main Lodge—40 Cottages used as sleeping rooms only. Modern plumbing, electric lights. Plumbing from central washroom.
Rates, including meals on application—Reservations must state definite dates of arrival and departure. Guests checking out prior to dates arranged are charged for full length of reservation.
Attractions—Tennis court and Horseshoe pitch, Fishing, Boating, Swimming, Riding, Hiking, Dancing, Ping Pong tables, Softball field.
SPECIAL—Picnic Rides, Moonlight Rides and Overnight Rides.

BIRKEN DISTRICT

BIRKEN LODGE

Proprietor..... E. R. Macconnel
 P. O. Address..... Birken, B. C.
 Open..... May to November
 Nearest Station..... Birken, B. C.
 Distance from Station..... 200 yards
 Transportation..... Included in rates
Accommodation—Fully furnished housekeeping cabins, bedding and Linen supplied, electric lights, running water near cabins. Store and Post Office. No meals served.
Rates—Cabins, \$2.00 to \$3.50 per day, single or double. Extra cots with bedding, 50c per day.
Attractions—On the shores of Summit Lake. Ideal for Boating and Swimming. Lake and River fishing if desired. Tackle for rent. Day trips arranged with guides to famous Birkenhead Lakes.

ANDERSON LAKE DISTRICT

MCGILLIVRAY LODGE ON ANDERSON LAKE

Proprietors..... "The Masons"
 P. O. Address..... McGillivray Falls, B. C.
 Open..... May 1st to October 1st
 Nearest Station..... McGillivray, B. C.
 Distance from Station..... At Station
 Transportation..... Not required
Accommodation—Furnished cabins, electric light, baths, showers, everything provided. Store telephone, post office.
Rates, including meals—On application.
Attractions—Tennis Courts, Fishing, Boating, Riding, Hiking, Swimming, Dancing. Visit the gold mines: ride over mountain top. No mosquitoes.

SETON LAKE DISTRICT

THE FAMOUS SWANSON CHERRY RANCH

Proprietor..... R. J. Cuddeford
 P. O. Address..... Seton Lake, B. C.
 Open..... May 15th to September 30th
 Nearest Station..... Seton, B. C.
 Distance from Station..... 3 miles
 Transportation..... Available
Accommodation—In ranch house. Electric light, running water. Blankets supplied. Not open for guests during season 1949.
Attractions—Located on Anderson Lake. Fishing, Riding, Hiking, Boating, Swimming. A limited number of guests.

SETON LAKE DISTRICT

SETON HOUSE HOTEL & RESORT

Proprietress..... Mrs. A. C. Struthers
 P. O. Address..... Shalalth, B. C.
 Open..... All year
 Nearest Station..... Shalalth, B. C.
 Distance from Station..... 100 yards
 Transportation..... Not required
Accommodation—Modern hotel rooms, cottages, cabins, electric light, running water. Ideal Rest Resort. Quiet and respectable.
Rates, including meals and Boating—Single, per day, \$4.25; per week, \$28.00. Double, per week, \$50.00. The best of home cooked meals served in the Main Dining Room.
Attractions—Fishing, Riding, Hiking, Boating, Swimming, Dancing. B. C. Electric Power project, 1 mile, also stage connecting Bralorne and Pioneer mines. Frequent gas car service to Lillooet, B. C.

BRIDGE RIVER DISTRICT

KEARY LODGE

Proprietor..... Charles Keary
 P. O. Address..... Minto Mines, B. C.
 Open..... May 1st to October 15
 Nearest Station..... Shalalth
 Distance from Station..... 40 miles
 Transportation..... \$4.30 one way; \$8.20 return
Accommodation—One and two-roomed cabins, fully furnished.
Rates, including meals—Single, \$4.50 per day; \$29.00 per week. Double \$8.00 per day; \$52.00 per week.
Attractions—Fishing, Boating, Swimming, Riding, Hiking, Saddle and Trail Camping Trips into excellent mountain scenery. Also to camp sites 5,000 to 6,000 feet above sea level.

LILLOOET DISTRICT

CRAIG LODGE

Proprietor..... S. M. and M. V. Jones
 P. O. Address..... Lillooet, B. C.
 Open..... May 1 to September 30
 Nearest Station..... Craig Lodge
 Distance from Station..... Close by
 Transportation..... Included in rates
Accommodation—Located on Seton Lake. Elevation 780 ft., 4 Hotel Rooms, also 12 cabins with Linen, blankets, etc., also 2 house-keeping cottages, electric light and water.
Rate, including meals—Per day, Single \$6.00 up; Double, \$11.50 up.
Meals Only—Breakfast, \$1.00; Lunch, \$1.00; Dinner, \$1.10.
Attractions—Scenic trips, Cayoosh Creek Falls, 2 miles from Lodge. Natural Ice Caves at Chenault's Place, 4 miles distant. Fishing, Boating, Swimming, Hiking and Trail Riding.

LILLOOET DISTRICT

LILLOOET HOTEL AND AUTO COURT

Proprietor..... Mr. and Mrs. H. Reynolds
 P. O. Address..... Box 157, Lillooet, B. C.
 Open..... All year
 Nearest Station..... Lillooet, B. C.
 Distance from Station..... 100 yards
 Transportation..... Taxi or walk over
Accommodation—Hotel rooms, Cabins, Single rooms or two room cabins, electric light, running hot and cold water in all rooms and cabins. Cafe next door.
Rates—\$2.00 per day and up, per person.
Attractions—Fishing, Boating, Swimming, Riding, Hiking, Dancing. P.G.E. Railway for car trips to Shalalth. Elevation 809 feet. Average rainfall 7 inches a year.

LILLOOET DISTRICT

BLUE POOL CAMP

Proprietors..... D. N Stevens - C. MacPherson
 P. O. Address..... Lillooet, B. C., or 2549 Alena Rd., Vancouver, B. C.
 Open..... May through October
 Nearest Station..... Lillooet, B. C.
 Distance from Station..... 2½ miles
 Transportation..... Taxi from Lillooet, B. C.
Accommodation—This is an Auto Camp of 12 units
 Electric light, running water, central plumbing, hot and cold showers. Good swimming pool in Seton Creek.
Rates—From \$3.00 per day up for two room cabins, accommodate 4 persons, blankets and sheets provided. Furnished, \$5.00 per day accommodate 4 persons; 3 rooms, unfurnished, \$3.50 per day.
Attractions—Good fishing in season. Hiking and Mountain climbing. Natural Ice Caves. Also earliest placer workings in this area.

PAVILION DISTRICT

PAVILION LODGE

Proprietors..... Mr. and Mrs. J. B. Leavens
 P. O. Address..... Pavilion, B. C.
 Open..... All year
 Nearest Station..... Pavilion, B. C.
 Distance from Station..... 50 yards
 Transportation..... None required
Accommodation—6 rooms in Lodge, fully modern, electric lights, running water, bedding supplied. Store, Post office. Also 5 housekeeping cabins. Rates on application.
Rates, including meals—Single, \$5.00 per day; Double, \$4.00 per day
Attractions—Fishing in Pavilion, Crown and Turquoise Lakes. Good hunting: Deer, sheep, goats, grizzly bear hunting on ten-day trips. Reservations for these trips must be made one month in advance. Trail riding, Hiking. Picnic lunches and camping equipment at no extra charge. No mosquitoes. Swimming, Boating.

MARBLE CANYON DISTRICT

SKY BLUE WATER CAMP

Proprietors..... "Sky Blue Water" Ltd.
 P. O. Address..... Pavilion, B. C.
 Open..... April through October
 Nearest Station..... Pavilion, B. C.
 Distance from Station..... 7 miles
 Transportation..... By arrangement ahead of arrival
Accommodation—13 housekeeping cabins, Electric lights and running water near cabins of 1 to 3 rooms; 9 with sleeping porches; and Main Lodge.
Rates—From \$1.50 to \$6.50 per day; 10% discount per week stay.
Attractions—Fishing, Boating, Swimming, Hiking. **Special Attractions:** Camp Fires, Indian Pictographs. Resort situated on beautiful blue Pavilion Lake in the heart of Marble Canyon. Good fishing available in Pavilion, Crown and Turquoise Lakes.

CLINTON DISTRICT

ARDEN PARK

Proprietor..... R. G. and Mrs. Johnston
 P. O. Address..... Clinton, B. C.
 Open..... May 1st to November 1st
 Nearest Station..... Kelly Lake
 Distance from Station..... 2 miles
 Transportation..... By arrangement, included in rates
Accommodation—Furnished Cabins, electric light, running water; Bedding and meals optional. Breakfast, 40c; Lunch, 50c; Dinner 60c.
Rates—1 to 2 persons per day, \$2.00; per week, \$12.00; 3 to 4 persons, per day, \$3.00; per week, \$20.00.
Attractions—Fishing, Boating, Swimming, Riding, Hiking.

CLINTON DISTRICT

THREE BAR GUEST RANCH

Proprietor..... John Pollard
 P. O. Address..... Clinton, B. C.
 Open..... May 15 to October 15
 Nearest Station..... Clinton, B. C.
 Distance from Station..... 2½ miles
 Transportation..... Taxi; maximum rate, \$1.00 per person
Accommodation—Fully modern Main Lodge of 10 rooms. Electric light and running water. Also, 6 double cabins.
Rates, including meals and other attractions—Single, per person per day, \$7.00; per week, \$40.00. Double, per person, per day, \$6.00; per week, \$38.00.
Attractions—Fishing, Riding, Hiking, Boating, Swimming, Dancing. Weekly camping trips to our cattle range, where guests may enjoy real outdoor life on the range.

GREEN LAKE DISTRICT

FLYING U GUEST RANCH

Proprietor.....Frances and Charlie Wilkinson
 P. O. Address.....70 Mile House, B. C.
 Open.....May 1 to October 31
 Nearest Station.....Flying U
 Distance from Station.....4 miles
 Transportation.....Included in rates
 Accommodation—Main Lodge and log cabins; bedding supplied. Excellent meals, running water, electric lights in Lodge.
 Rates, including meals and all attractions—Single, \$7.00 per day; \$49.00 per week. Double, \$6.45 per day, per person; \$45.00 per person, per week.
 Attractions—Good meals, good horses, good beds, good friendship, and lots of fun. One of the oldest Dude ranches in the west. Write, wire or phone for your reservation to Flying U Guest Ranch on Green Lake, in the heart of the Cariboo. "You won't be sorry!"

FLYING U DISTRICT

G LAZY 2 RANCH

Proprietors.....Bert and Ruth Gammie
 P. O. Address.....70 Mile House, B. C.
 Open.....May 1 to October 31
 Nearest Station.....Flying U
 Distance from Station.....11 miles
 Transportation.....Provided on request, included in rates
 Accommodation—Main Lodge, Electric Light and Showers, also fully furnished and comfortable Log Cabins. Tasty and wholesome Ranch Meals.
 Rates include meals and all attractions—No Extras. Single, \$6.25 per day; \$43.00 per week; Double, \$5.75 per day; \$40.00 per week.
 Attractions—Boating, Swimming, Riding, Hiking, Dancing, Excellent Trout Fishing, Fly or Trolling. Beach Parties, Races, Roundups, Trail Rides and real Western Ranch Life. Reservations can now be made by long distance telephone.

LONE BUTTE DISTRICT

THE UNICORN—Horse Lake—The Cariboo

Proprietor and Manager.....Tom Wilkinson
 P. O. Address Write: "THE UNICORN", 4861 ANGUS DRIVE, VANCOUVER, B. C., Fawn, B. C.
 Open.....May 15 to October 31
 Nearest Station.....Lone Butte, B. C.
 Distance from Station.....4 miles
 Transportation.....Provided, included in rates
 Accommodation—Attractive Main Lodge and Dining Room. Excellent home cooked meals served home style. Also fully equipped comfortably furnished Single, Double, Quadruple and Duplex for six; cabins. Laundry, Stores, Telephone.
 Rates, include everything. NO EXTRAS—Write direct for Reservations.
 Attractions—Pitch, Putt and Putting Green; 9-Hole Golf Course. Badminton, Hand Ball, Horseshoe Pitching and Table Tennis. Fishing, Boating, Swimming, Riding, Hiking, Dancing.

LONE BUTTE DISTRICT

ANDERSON LODGE

Proprietor.....James C. Mackie
 P. O. Address.....Fawn, B. C.
 Open.....May 15 to December 15
 Nearest Station.....Lone Butte, B. C.
 Distance from Station.....3 1/2 miles
 Transportation.....\$2.50 return
 Accommodation—Main Lodge and 12 Log Cabins for 2, 4, 6 persons, furnished, electric light and running water.
 Rates, including meals and boating—Single, per day, \$5.00; per week, \$35.00; Double, per day, \$9.00; per week, \$60.00.
 Attractions—Fishing, Boating, Riding, Swimming, Hiking, Dancing.

LONE BUTTE DISTRICT

MIDWOOD LODGE—HORSE LAKE

Proprietors.....Mr. and Mrs. Jim Huckvale
 P. O. Address.....Fawn, B. C.
 Open.....All year
 Nearest Station.....Lone Butte, B. C.
 Distance from Station.....10 miles
 Transportation.....Taxi service, 15c mile per car load
 Accommodation—Single and Double Cabins, furnished with bedding, electric light, private chemical toilets.
 Rates, including meals, boating, riding—Single, per day, \$5.00; per week, \$31.50; Double, per day, \$8.00; per week, \$50.00. Housekeeping Cabins also available.
 Attractions—Fishing, Boating, Riding, Hiking, Swimming. 75 yards from main road on beautiful Horse Lakes. Cabins in shade of pine trees. Cool, quiet, secluded, safe walks.

LONE BUTTE DISTRICT

"DEKA LAKE LODGE"

Proprietors.....Mr. and Mrs. C. B. Womack
 P. O. Address.....Fawn, B. C.
 Open.....April through November
 Nearest Station.....Lone Butte
 Distance from Station.....18 miles
 Transportation.....Taxis available
 Accommodation—Six Log Cabins, located on Lake shores, containing cook stoves and beds with inner spring mattresses, with all facilities for housekeeping.
 Rates—Single, \$2.00 per day; \$14.00 per week. Double, \$4.00 per day; \$24.00 per week.
 Meals—Breakfast, 75c; Lunch, 75c; Dinner, \$1.00.
 Attractions—Fishing, Boating, Swimming, Riding, Hiking. Moose, Deer and Bear Hunting in season.

LONE BUTTE DISTRICT

EGAN LAKE LODGE RANCH

Proprietors.....Mr. and Mrs. L. C. Cleveland
 P. O. Address.....Bridge Lake, B. C.
 Open.....May 1 to November 30
 Nearest Station.....70 Mile House, B. C.
 Distance from Station.....36 miles
 Transportation.....Available
 Accommodation—Six large double Cabins, one small, one large with partitioned rooms, domestic furnished. Accommodate up to eight. Fully equipped, fireplace, hot and cold water shower. On Lake Shore. Boat included, \$8.00 per day. Electric lights, well and running water. Meals available at Ranch Home, family style.
 Rates—On application.
 Attractions—Scenic trips, Fishing at Camp and several other lakes. Boating, Swimming, Hiking, Cliff Climbing, Hunting, Moose, Deer, Bear, Fowl, Target shooting at Gophers.

EXETER DISTRICT

100 MILE LODGE—(Licensed Premises)

Proprietor.....Lord Martin Cecil
 P. O. Address.....100 Mile House
 Open.....All year
 Nearest Station.....Exeter, B. C.
 Distance from Station.....2 miles
 Transportation.....Taxi to or from Exeter, \$2.50
 Accommodation—Hotel rooms, running water, electric light, also six cottages with bathrooms, toilets, washrooms. Telephone, Telegraph. Garage and Cafe service. General Store.
 Rates—Single, \$2.00 up per day; \$12.00 up per week; Double, \$3.00 up per day; \$20.00 up per week. Meals available: Breakfast, 75c to 85c; Lunch, 85c to \$1.00; Dinner, \$1.00 to \$2.00.
 Attractions—The friendly atmosphere of the Cariboo together with the beauty of the scenery and homelike informality are outstanding features of the Lodge frequently remarked upon by guests.

CANIM LAKE DISTRICT

CANIM LAKE LODGE

Proprietors..... Mr. and Mrs. R. D. Travers
 P. O. Address..... Canim Lake, B. C.
 Open..... May 15 to October 15
 Nearest Station..... Exeter, B. C.
 Distance from Station..... 30 miles
 Transportation..... Should be arranged in advance
 Accommodation—Rooms in Lodge or Cabins. Running water, electric light.
 Rates, including meals—Single, per day, \$6.50; per week, \$38.00. Double, per day, \$6.00; per week, \$35.00. A limited number of house-keeping cabins, rates from \$3.00 up.
 Attractions—Boating, Swimming, Riding, Hiking, Hunting, Ducks, Geese, Grouse in season. Also arrange for big game hunting. Enquire re Fly Fishing at Hoover Bay. Rowboats and Power Boats, \$1.50 up.

CANIM LAKE DISTRICT

HINTERLAND LODGE

Proprietors..... Dr. and Mrs. A. H. Bayne
 P. O. Address..... Canim Lake, B. C.
 Open..... May 15 to October 15
 Nearest Station..... Exeter, B. C.
 Distance from Station..... 26 miles
 Transportation..... Available, Taxi by request
 Accommodation—Main Lodge with fully modern facilities contains Dining Room, spacious lounge with fireplace. All sleeping accommodation in bright cosy cottages, delightfully furnished. Beauty Rest mattresses. Electric light throughout Resort. Good Boats.
 Rates, including meals—On application.
 Attractions—Fishing, Swimming, Hiking, Picnics, Boating trips, Riding, Games. 1500 feet of private beach. Superb meals, Afternoon Tea, Evening Snacks. The perfect place to relax.

CANIM LAKE DISTRICT

GREENLEES LODGE ★★★

Proprietors..... Mr. and Mrs. E. L. Greenlees
 P. O. Address..... Canim Lake, B. C.
 Open..... May 15 to November 30
 Nearest Station..... Exeter, B. C.
 Distance from Station..... 26 miles
 Transportation..... Should be arranged in advance
 Accommodation—Fully modern completely furnished rooms in Lodge and Cabins located on the shore of Canim Lake. Hot and cold running water in every room. Some Lodge rooms and Cabins with private baths.
 Rates, including meals—Single, \$6.00 per day; \$40.00 per week. Double, per week, \$37.50. With private bath in Lodge or Cabins, \$50.00 per week.
 Attractions—Fishing, Boating, Swimming, Hiking, Riding, Dancing, Hunting.

LAC LA HACHE DISTRICT

BELLEVUE RANCH

Proprietor..... J. S. Bathgate
 P. O. Address..... Lac La Hache
 Open..... May 1st to December 15th
 Nearest Station..... Clark's Crossing
 Distance from Station..... 12 miles
 Transportation..... Included in rates
 Accommodation—Lodge rooms and Housekeeping Cabins with electric light and running water. Bedding supplied if required in house-keeping cabins.
 Rates, Lodge Rooms, including meals and all Attractions—Single, \$5.00 per day; \$30.00 per week. Double, \$4.50 per day; \$28.00 per week. Special rates for housekeeping cabins.
 Attractions—Fishing, Boating, Swimming, Riding, Hiking, Dancing. Special rates for families. Write for further information and reservations.

LAC LA HACHE DISTRICT

HILLPOINT (At Dempsey Lake)

Proprietors..... Mr. and Mrs. A. E. Abram
 P. O. Address..... Lac La Hache, B. C.
 Open..... All year
 Nearest Station..... Lac La Hache, B. C.
 Distance from Station..... 14 miles
 Transportation..... Included in rates. Trains met by appointment
 Accommodation—Fully modern Lodge and attractive log cabins.
 Rates, including meals and all attractions—Single, \$6.50 per day; \$42.50 per week. Double, \$6.00 per day; \$38.50 per week.
 Attractions—Excellent fishing in this area. Boating, Swimming, Riding, Hiking and local Dancing. Also conducted Trail Rides and Musical Evenings.
 Write, telephone or telegraph for reservations.

LAC LA HACHE DISTRICT

"TENESHEENA—THE CARIBOO"
(Te-Ne-Shee-Na)

Proprietors..... E. O. WRIGHT, 3206 West 4th Avenue, Vancouver, B. C. — Cedar 4380 Percy Wright
 P. O. Address..... Lac La Hache
 Open..... April to December
 Nearest Station..... Lac La Hache
 Distance from Station..... 15 miles
 Transportation..... Included in rates
 Accommodation—Main Lodge natural logs and rugged stone, overlooking Timothy Lake individual log cabins on lake shore.
 Rates, including meals—On application.
 Attractions—For a restful retreat and stimulating mountain air, come to beautiful Tenesheena on Timothy Lake. Good meals, spring filled mattresses, Mineral water. Rainbow Trout Moose, Deer, Bear, Grouse, Ducks and Geese Boating, Fishing, Hiking.

WILLIAMS LAKE DISTRICT

CHIMNEY LAKE HUNTING AND FISHING LODGE

Proprietors..... Sam and Nell Mitchell
 P. O. Address..... Williams Lake, B. C.
 Open..... May 1st to December 1st
 Nearest Station..... Williams Lake
 Distance from Station..... 20 miles
 Transportation..... Taxi service available for stay of 3 days or more
 Accommodation—Main Lodge and fully furnished Log Cabins. Running water, Gas Lights. Also furnished cabins for housekeeping if desired.
 Rates—Single, \$5.00 per day; \$30.00 per week. Meals included. Double, \$4.50 per day, per person; \$27.50 per week, per person. Boating included.
 Attractions—Fishing, Boating, Swimming, Riding, Hiking, also Big Game Hunting—Ducks and Geese.

WILLIAMS LAKE DISTRICT

DRUMMOND LODGE

Proprietors..... Alex and Hilda Drummond
 P. O. Address..... Box 815, Williams Lake, B. C.
 Open..... All year
 Nearest Station..... Williams Lake, B. C.
 Distance from Station..... 1 1/2 miles
 Transportation..... Taxis available, \$1.00, one to three persons.
 Accommodation—Hotel rooms, fully modern. Electric light and running hot and cold water in all rooms.
 Rates—Single, from \$3.00 per day; \$21.00 per week. Double, from \$4.00 per day; \$28.00 per week. Meals available at various rates.
 Attractions—Fishing, Boating, Swimming, Riding, Billiards, Table Tennis, Archery.

WILLIAMS LAKE DISTRICT

SILVER HORN LODGE & GUEST RANCH ***

(Elevation 2800 feet)

Proprietors..... Mr. and Mrs. Ken McKenzie
P. O. Address..... Big Lake, B. C.
Open..... May 1st to November 30th
Nearest Station..... Williams Lake, B. C.
Distance from Station..... 33 miles
Transportation..... Included in rates
Accommodation—The Lodge is a large log building containing a large Lounge, Bedrooms, and Dining Room. Electric light and running water. Spring filled mattresses on all beds.
Rates, including meals—Single, \$6.50 per day; \$38.00 per week. Double, \$6.00 per day; \$35.00 per week.
Attractions—Horseback Riding and Boating included in above rates. Fishing, Boating, Swimming, Riding, Hiking, Dancing. All day trips by horseback, also Picnic Trips.

WILLIAMS LAKE DISTRICT

MAPLE LEAF HOTEL

Proprietor..... Benny Abbott
P. O. Address..... Box 48, Williams Lake, B. C.
Open..... All year
Nearest Station..... Williams Lake, B. C.
Distance from Station..... One block
Transportation..... Taxi rate, 50c
Accommodation—Hotel rooms, electric light, running water, licensed premises. Cafe in connection open 7:00 a.m. to midnight.
Rates—On request.
Attractions—Fishing, Boating, Riding, Swimming, Hiking, Dancing. Headquarters for Registered and reliable Hunting Guides. Hunting parties arranged. Wire, write or phone for particulars.

CHILCOTIN DISTRICT

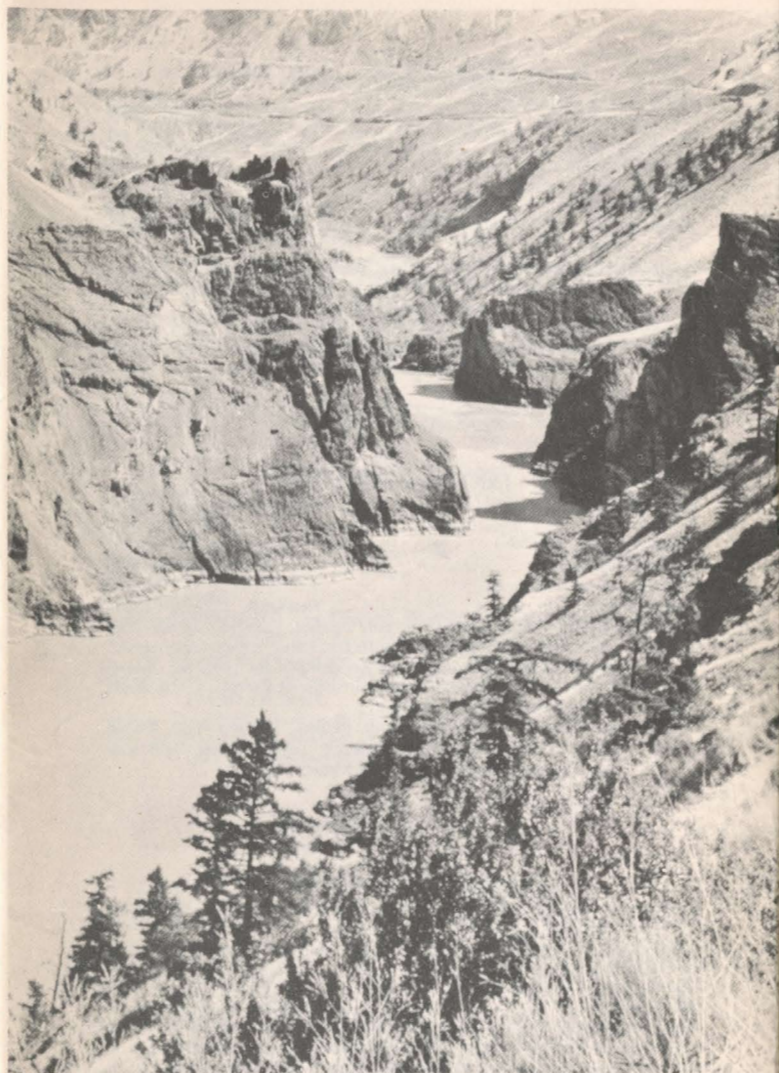
T. H. GUEST RANCH

Proprietor..... Hance Brothers
P. O. Address..... Hanceville, Chilcotin Valley, B. C.
Open..... May 1 to November 1
Nearest Station..... Williams Lake, B. C.
Distance from Station..... 58 miles
Transportation..... \$4.00 per person
Accommodation—Log Cabins, Swimming Pool, Hot and Cold Showers, excellent beds. Meals in Main Ranch Dining Room.
Rates, including meals—Single, \$35.00 per week; Double, \$35.00 per week, per person. Positively no extras; \$35.00 per week covers your entire holiday and includes all listed amusements.
Attractions—Fishing, Swimming, Hiking, excellent Trail Riding on good horses; Dancing. Shooting in season—Moose, Deer, Ducks and Geese.

WILLIAMS LAKE DISTRICT

ROSE LAKE LODGE

Proprietors..... Mr. and Mrs. Norman Palmer
P. O. Address..... Ochiltree P. O., Williams Lake, B. C.
Open..... All year
Nearest Station..... Williams Lake, B. C.
Distance from Station..... 25 miles
Transportation..... Provided on request and included in rates
Accommodation—Modern two and three room cabins, electric light and showers. Meals in Lodge.
Rates, all inclusive—Single, per day, \$6.50; per week \$38.00. Double, per day, \$6.50; per week \$36.00. Children over ten years, full rates.
Attractions—Boating, Swimming, Riding, Hiking, Fishing, Dancing, Table Tennis, etc. Write, Telephone or Telegraph for Reservations.



Looking up Fraser Canyon

HORSEFLY DISTRICT

MANLEY'S HORSEFLY LAKE HUNTING AND FISHING CAMP

Proprietors..... Mr. and Mrs. Doug. Manley
P. O. Address..... Horsefly, B. C.
Open..... May 1st to November 30th
Nearest Station..... Williams Lake, B. C.
Distance from Station..... 54 miles
Transportation..... via Taxi or Stage Truck from Williams Lake
Accommodation—Hotel rooms, also sleeping cabins and housekeeping cabins, bedding supplied. Electric light, running water.
Rates, including meals—Rates upon request.
Attractions—Fishing, Boating, Swimming, Riding, Hiking, Dancing. Fishing and Hunting is unsurpassed.

HORSEFLY DISTRICT

RED JACKET HUNTING AND FISHING LODGE

Proprietors..... I. H. and R. V. Hubbard
 P. O. Address..... Horsefly, B. C.
 Open..... May 1st to December 1st
 Nearest Station..... Williams Lake, B. C.
 Distance from Station..... 54 miles
 Transportation—Williams Lake Taxi—Horsefly Stage; one, \$15.00; two, \$7.50 each; three, \$5.00 each; four, \$3.75 each.

Accommodation—Main Lodge and Rustic housekeeping cabins located among trees and shores of Large and Small Horsefly Lakes. Meals available: Breakfast, \$1.00; Lunch, \$1.00; Dinner, \$1.25.

Rates—Single, per day, \$2.00; per week, \$12.00. Double, per day, \$3.50; per week, \$21.00; 20% in advance with reservation.

Attractions—Big Game Hunting, Bear, Moose, Deer, Goat, Cariboo, Ducks, small game in season. Large Rainbow Trout Fishing, Swimming, Boating, Riding, Hiking, Dancing.

QUESNEL DISTRICT

NORTHERN LIGHTS LODGE

Proprietors..... Hale Bros.
 P. O. Address..... Likely, B. C.
 Open..... May 1st to October 31st
 Nearest Station..... Williams Lake, B. C.
 Distance from Station..... 60 miles
 Transportation..... Available

Accommodation—Fishing and Hunting Lodges, modern in every respect. Showers and toilet connecting each room in Main Lodge. Lay-out of rooms ideal for individual or in suites.

Rates, including meals and use of Boats—\$60.00 per week; 20% deposit must accompany reservations.

Attractions—Boating, Fishing, etc. Plenty of home cooked, wholesome food. An ideal spot for rest and relaxation in comfort.

QUESNEL DISTRICT

CARIBOO HOTEL

Proprietor..... Harold Cleland
 P. O. Address..... Quesnel, B. C.
 Open..... All year
 Nearest Station..... Quesnel, B. C.
 Distance from Station..... 5 Blocks
 Transportation..... Taxi rate, 50c

Accommodation—Ultra-modern hotel rooms with and without baths—Pembroke Baths—Showers.

Rates—With bath, Single, \$4.00; with bath, Double, \$5.50; without bath, Single, \$2.50; without bath, Double, \$3.50.

Attractions—Fishing, Boating, Riding, Hiking, Swimming, Dancing, Sight-seeing Drives. Nine-Hole Golf Course.

QUESNEL DISTRICT

QUESNEL HOTEL

Proprietor..... Arne Hassel-Gren
 P. O. Address..... Quesnel, B. C.
 Open..... All year
 Nearest Station..... Quesnel, B. C.
 Distance from Station..... 5 minutes
 Transportation..... Taxis operating from Hotel meet all trains

Accommodation—Ultra-modern rooms with bath and showers. Completely newly furnished with modern light furniture, smart drapes and accessories, wall to wall broadloom carpets, Slumber King Springs, Beauty Rest Mattresses, Eiderdown Pillows, Kenwood Blankets and all new bedding of best quality. Every room running hot and cold water, electric conveniences and the most modern heating system in the interior of British Columbia.

Rates—Single, \$3.50 per day; Double, \$4.50 per day.

Attractions—Riding, Boating, Good Hunting, Excellent Golf Course, Fly Fishing, and Trolling, Rainbow Trout.

QUESNEL DISTRICT

CARIBOO LOG CABIN CAMP

Proprietors..... Mr. and Mrs. O. S. Horton
 P. O. Address..... Box 812, Quesnel, B. C.
 Winter Address..... 4744 Dunbar St., Vancouver, B. C.
 Open..... All year
 Nearest Station..... Quesnel, B. C.
 Distance from Station..... 1 mile
 Transportation..... Taxi, 50c

Accommodation—Camp situated on Fraser River. All Cabins equipped for housekeeping, one, two and three rooms. Electric light, running water. All beds new spring filled mattresses. Central shower building. Convenient General Store, Town with good Cafes within 5 minutes walk across bridge.

Rates—Single, \$2.00 and \$3.00 per day. Double, \$3.00 per day.

Attractions—Boating, Riding, Hiking, Dancing. Good fishing and swimming at Lakes, 4 to 9 miles from Camp.

QUESNEL DISTRICT

TRITES AUTO COURT ***

Proprietors..... Mr. and Mrs. R. Trites
 P. O. Address..... Quesnel, B. C.
 Open..... All year
 Nearest Station..... Quesnel, B. C.
 Distance from Station..... One block
 Transportation..... Taxi cost 50c

Accommodation—Three room Units each fully modern and fully furnished with bedding, linen and dishes, electric light, hot and cold running water; Slumber King Springs, Deep Sleep mattresses. Rough Siding outside. Knotty panelling inside finish.

Rates—2 persons, \$4.50 per day; \$27.00 per week—\$1.00 extra person.

Attractions—Fishing, Boating, Swimming, Riding, Hiking, Dancing. Numerous lakes in vicinity with boats. Fishing Rainbow Trout, Moose, Deer, Bear and Bird Hunting in season.

WELLS-BARKERVILLE DISTRICT

"BOWRON LAKE LODGE"

Proprietors..... Mr. W. McKittrick and Sons
 P. O. Address..... Box 265, Wells, B. C.
 Open..... May 1st to November 1st
 Nearest Station..... Quesnel, B. C.
 Distance from Station..... 50 miles
 Transportation..... Stage or by arrangement. Will meet you with private car.

Accommodation—Modern Lodge, 10 bedrooms. Fully furnished Cabins on Lake shore.

Rates—Write for information, rates and reservations.

Attractions—Located on beautiful Bowron Lake. The start of 100 mile canal or Boat trip through 11 lakes and rivers. Furnished cabins located strategically around circle of lakes. Excellent fishing, abundance of wild life. Guides available for Fishing-Hunting Big Game or Photographic service.

WELLS-BARKERVILLE DISTRICT

CARIBOO HUNTING AND FISHING LODGE

Proprietors..... Mr. and Mrs. Grover A. Youngs
 P. O. Address..... Wells, B. C.
 Open..... June 1st to October 15th
 Nearest Station..... Quesnel, B. C.
 Distance from Station..... 50 miles
 Transportation..... Stage from Quesnel

Accommodation—Modern main lodge and completely furnished cabins, electric lights.

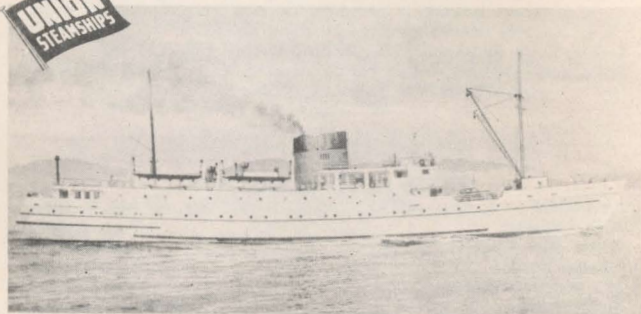
Rates—Write for information, rates and reservations.

Attractions—Located on beautiful Bowron Lake, start of 100-mile scenic lake trip through connecting waters. Fishing Parties conducted around circle of lakes. Photograph abundant wild-life. Big game hunters guided for Moose, Cariboo, Goat, Black and Grizzly Bear.

Union Steamships Limited, whose steamers make regular connections with Pacific Great Eastern trains at Squamish, offer to Pacific Coast and Vancouver visitors a choice of many interesting

ONE-TO-SIX-DAY TRIPS

CRUISING THE SCENIC FJORDS OF
British Columbia & Southeastern Alaska



To BOWEN ISLAND

DAILY

Vancouver's Seaside Playground. Week-days 9:00 a.m. Sundays 9:30 a.m. Plus extra sailings as shown on schedule. Enjoy a visit to lovely Bowen Inn.

\$7.25

Return

One-Day Cruise to SQUAMISH

(Every Day)

Cruising to the head of beautiful Howe Sound . . . "Vancouver's glorious Inland Sea."

See
**Current
Schedule**

DAY
CRUISE

To WEST HOWE SOUND

Magnificent scenery . . . interesting ports of call. Daily sailings (see current schedule.)

See
**Current
Schedule**

Also
DAY
CRUISES

To SECHELT

And Along the Bracing Gulf Coast

To BUCCANEER BAY, PENDER HARBOUR, WESTVIEW

As
Scheduled

(for Powell River) and lovely Savary Island

LONGER CRUISES (Particulars and fares on application) up to six days in duration, are also operated through the NORTHERN FJORDS OF BRITISH COLUMBIA to PRINCE RUPERT, STEWART (head of the famous PORTLAND CANAL), QUEEN CHARLOTTE ISLANDS and to KETCHIKAN, ALASKA.

Ask for Full Information and Illustrated Folders at

UNION STEAMSHIPS LTD.

Head Office and Wharf Ticket Office:

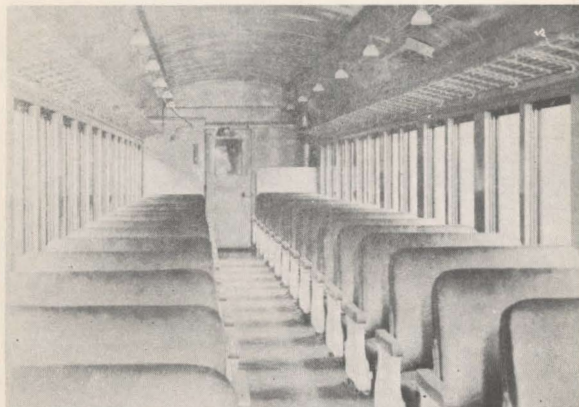
Union Pier, Foot of Carrall Street, Vancouver, B. C.

City Ticket Office: 793 Granville Street

Telephone: PA cific 3411—Telephone MA rine 5438

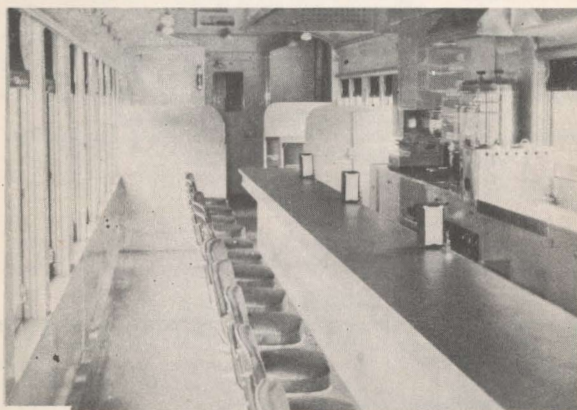
THE PACIFIC GREAT EASTERN RAILWAY

The motive power and equipment of the Pacific Great Eastern Railway is up-to-date and modern in every respect. It consists of Oil-burning and Diesel Electric Locomotives, Steel Coaches, Dining-Cars and comfortable Pullman Standard Sleeping Cars.



COACH SERVICE

First Class Coaches are Standard equipment on all Passenger Trains. They are electric lighted and modern throughout. Their generous capacity and comfortable seating arrangements are an outstanding feature of this Service.



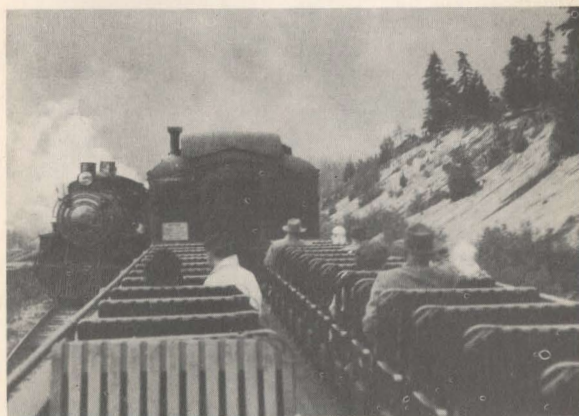
DINING CAR SERVICE

Good meals enhance the pleasure of Travel. Pacific Great Eastern Railway Diners maintain a high standard of quality and service. Table d'Hote and a la Carte meals are served at moderate prices.



SLEEPING CAR SERVICE

The Sleeping Car equipment of the Pacific Great Eastern Railway consists of Standard 12-Section, 1-Drawing Room, also 10-Section, 1-Compartment, 1-Drawing Room electric lighted Cars. They have wide berths, roomy Ladies' Dressing Rooms, Men's toilet facilities, and are most comfortable riding cars.



OPEN TOP OBSERVATION CARS

During the months June through September, Open Top Observation Cars are operated on all Passenger Trains. These Cars permit our Passengers to enjoy the exhilarating mountain air and, if they so desire, to obtain excellent camera shots of the superb scenic wonders along the line of Railway. The Oil-burning and Diesel Electric Locomotives eliminate entirely the smoke and cinder nuisance.

MAKE THIS A VACATION TO REMEMBER

All in the space of twenty-four hours' travel-time climate ranges from the healthful salt breezes of the Pacific to bracing desert air of the dry-belt; from soothing coastal atmosphere to alpine winds, touched with snow-line crispness. British Columbia is the great unspoiled hunting ground of the continent. Nowhere in the world are there virgin game and fishing areas to compare with these, and so readily accessible as the Pacific Great Eastern country.

The Pacific Great Eastern Railway cuts a cross-section of British Columbia from the coastal Fjords to the Cariboo goldfields; from the rich delta farm-lands to the rolling cattle country.

Breath-taking vistas of snow-capped mountain peaks, tumbling streams and roaring waterfalls are contrasted with great forests, gem-like lakes fed by glacial ice-fields and sweeping ranges studded with great cacti and sage-brush.

Panoramas from precipitous heights are contrasted with dark chasms through which engineering ingenuity fashioned the Pacific Great Eastern. Nature lavished her bounty on British Columbia and the Pacific Great Eastern penetrates the very heart of it to provide a vacation-land of unparalleled beauty.

Here, unfolded before the holiday planner is the complete vacation land, offering recreation and amusement opportunities limited only by the energy and imagination of the traveller.

Surprise follows surprise in such profusion that a vacation by Pacific Great Eastern is an adventure never to be forgotten. Modern is mixed with historical simply and charmingly. Time is turned back to those first struggling pioneers who rushed to wash the rich gold-bearing sands of the Cariboo rivers, and trudged into uncharted mountains in search of elusive "Mother Lodes."

Everywhere is the bracing, exhilarating mountain air touched with the tang of resinous evergreen forests, sweet scented wild flowers and wild berries.

Whether your interests are dictated by relaxation and rest in an atmosphere of simplicity, or the more vigorous pursuits of mountaineering, riding, hunting, fishing, swimming and hiking, the selection is unlimited.

All these and other resort activities available throughout the thousands of square miles of the territory served by the Pacific Great Eastern are now within your grasp. Better still, they can be reached at the most reasonable cost in the world. You will remember this vacation trip as long as memory lasts.

Complete and reliable information available from Railway and Travel Agents or from the General Passenger Department of the Pacific Great Eastern Railway, 736 Granville Street, Vancouver, B. C.



A Personal Message to You ...

The Pacific Great Eastern Railway

in offering you the "All Expense Tours" described in this Publication, do so with the firm conviction that they are the best possible value for the money in the "All Expense Tour" field.

The Combination Rail and Water feature of the Trips, coupled with the outstanding scenic beauty on every side, and the excellent Sleeping and Dining Car Service provided by this Railway, tend to make these All Expense Tours an unforgettable thrill.

The Tours permit of relaxation and comfort while travelling through the unspoiled grandeur of the last great hinterland of Northern British Columbia. This area may eventually make history through the exploration and development of its tremendous wealth of natural resources, as yet untouched by man.

It Challenges the Imagination!



For those who desire to spend a Vacation in this magnificent country, the Resorts shown herein provide various types of Recreation and Sport to suit every taste, viz., Boating, Fishing, Swimming, Hiking, Riding and Daffing. We have complete confidence in the Resorts listed in this Folder by our Advertisers, and feel that Patrons will thoroughly enjoy the activities and Service provided.

Pacific Great Eastern
"THE FRIENDLY RAILWAY"

1949

Pacific Great Eastern
"THE FRIENDLY RAILWAY"

