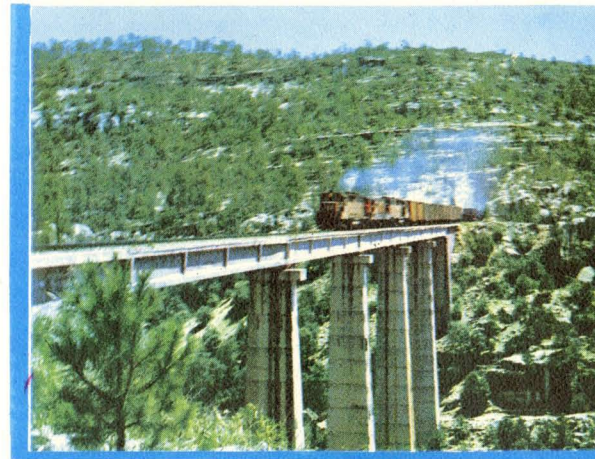


# CHIHUAHUA PACIFIC RAILWAY, CO. MEXICO

# CHIHUAHUA PACIFIC RAILWAY, CO. MEXICO



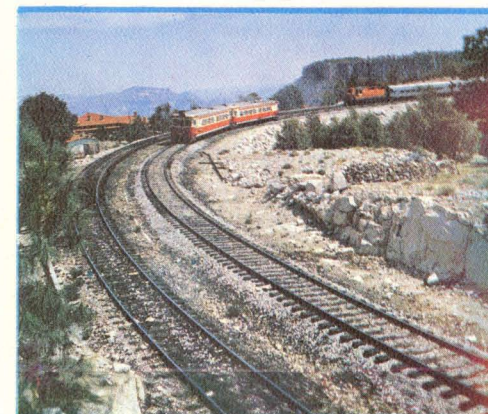
SANTA BARBARA BRIDGE.



LA LAJA BRIDGE KILOMETER A-639-200  
longitude 212 Mts. - Latitude 50 Mts.



SHRIMP BOATS AT TOPOLOBAMPO BAY.



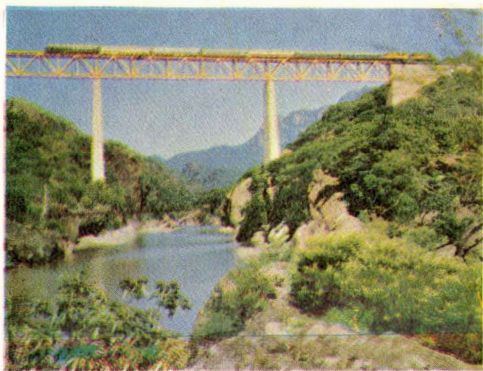
TRAINS PULLING OUT OF DIVISADERO  
BARRANCAS.



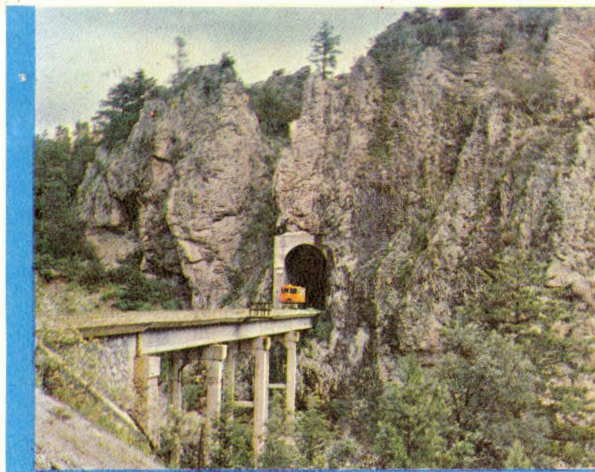
A TREE GROWING OUT OF THE ROCK AT  
TACUINA, KILOMETER A-727.8

In November 1961 the Chihuahua al Pacifico Railroad was completed, finishing what is probably one of the World's finest engineering jobs, with 39 bridges and 86 tunnels. An exceptionally smooth road bed, with expansion type rails virtually eliminates all vibration. The Pullman Train has good accommodations including a fine Dining Car, with excellent food. The Italian Fiat self-propelled cars are faster and a dream come true for sightseeing with broad clean windows plus comfortable reclining chairs reserved on your ticket. Each train has a dinette with a good cook, fine food and your favorite beverages. While seated, very capable waiters take your order and serve you with clump on trays. The Fiat is a day time train since it is designed primarily for sightseeing. The trip from Chihuahua, to Los Mochis is a must. It is an unforgettable 13 hours.





JUST ONE OF THE 39 BRIDGES  
ON THIS UN BELIEVABLE RAIL  
ROAD OF ENGINEERING FEATS.



CUITECO BRIDGE.



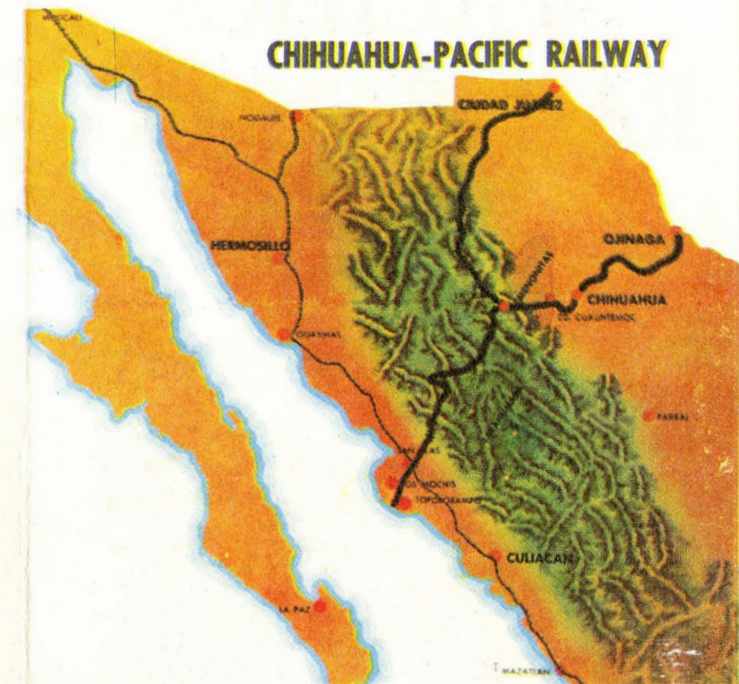
LA LAJA BRIDGE.



RIO FUERTE BRIDGE,  
THE LONGEST BRIDGE  
ON LINE.

# CHIHUAHUA PACIFIC RAILWAY, CO. MEXICO

No place on this continent can one reach such a wild and beautiful area so quickly and comfortably. Whether one boards the train in Ojinaga, Chihuahua, across de border from Presidio, Texas; Juarez Chihuahua, across the border from El Paso, Texas; or in Los Mochis, Sinaloa, on the West Coast of Mexico, crossing the Sierra Madre Mountains and the Barrancas where 40,000 Tarahumara Indians live, will be like a beautiful dream. The canyons are so steep and rugged one sits in awe and wonderment as the Train glides along. Enjoy the sheer beauty of the pinnacles rising above the canyon walls that drop vertically into deep canyons in excess of 6,000 feet. The inaccessible canyons are rich with unmined minerals. It is little wonder the Tarahumara Indians find this a good home; with the rushing torrents of water, beautiful water falls, blooming Mopa and Kapoc trees, mixed with wild orchards and tropical fruit growing on the canyon floor. The Tarahumara Indians, sometimes called the foot runner for their ability to run down wild game, also play a kind of kick ball game, with a wooden ball and their bare feet, which often lasts 72 hours. These Indians are not unfriendly, they are shy and nomadic by nature. Many may be seen along the Railroad. This is truly a trip to be enjoyed and remembered.



DIVISADERO BARRANCAS, ALL TRAINS STOP  
FOR 25 MINUTES IN ORDER THAT EACH  
PASSENGER MIGHT SEE THIS BEAUTIFUL VIEW.