

CANADA

BY

Canadian Pacific

CANADA

BY

Canadian Pacific





Montreal, metropolis of Canada, is host to thousands of visitors year round. French and English Canadian cultures mix in this great port city offering tourists a delightfully different atmosphere.

Rushing blue waters and the sylvan background of wooded forests provide an ideal setting for fishing in Ontario's French River.

The Peace Tower and Federal Parliament Buildings at Ottawa are visible from the scenic domes of Canadian Pacific's transcontinental trains—"The Canadian" and "The Dominion".

CANADA CALLS...

Holiday Land

from

Coast to Coast



Toronto, capital of the Province of Ontario and site of the 1600-room Royal York Hotel, Canada's foremost convention center.

Katy's Cove, private beach of The Algonquin, Canadian Pacific summer resort at St. Andrews-by-the-Sea, New Brunswick.



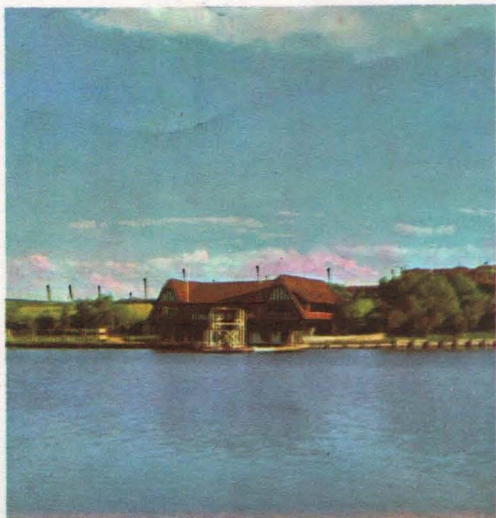
THE "rail" way is the "real" way to see Canada . . . there's so much to see and do. From the East to the West coast, there is a variety of holiday land hard to equal anywhere in the world. The nation's major cities are served by Canadian Pacific crack passenger trains. Hotels and summer resorts from sea to sea offer every amenity to their patrons. Two transcontinental trains—"The Canadian" and "The Dominion"—span the nation between Montreal and Vancouver, Toronto and Vancouver, along Canada's only, and the world's longest, scenic dome route. Through the glareproof glass of the high level domes, the scenic wonders of the nation pass in a panorama of beauty.

Central and Eastern Canada offer distinctive Canadian sights, sounds, scenes . . . urban or rural to your taste . . . from the bi-lingual welcome of Quebec to the "down east" flavour of the Maritime Provinces . . . all by Canadian Pacific.



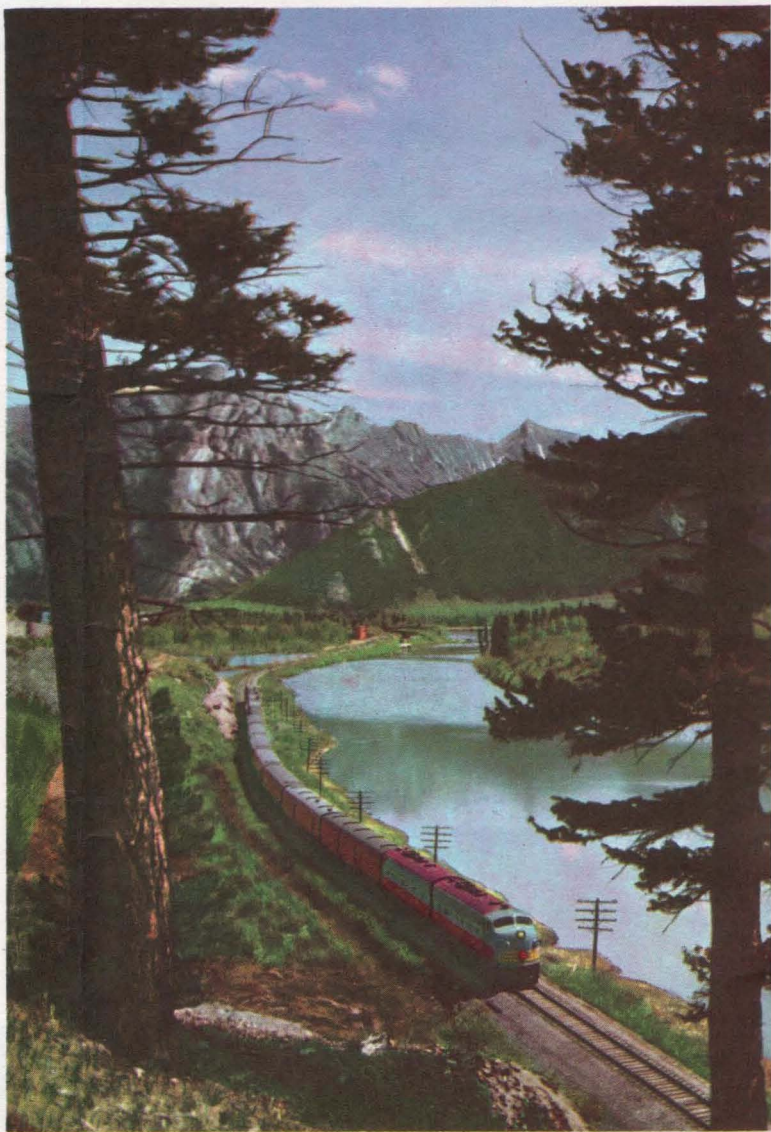
Ottawa, showing the Rideau Canal, Confederation Square, and Parliament Buildings.





◀ Swordfish Club in Moose Jaw, third largest city in Saskatchewan. This Western Canadian city boasts 16 parks totalling 256 acres.

"The Mountaineer" winds its way along the shore of a mountain lake.



A Scenic Guide For Your Journey



◀ A Canadian Pacific Great Lakes liner in the locks at Sault Ste. Marie. S. S. Assiniboine and S. S. Keewatin offer an alternate Great Lakes summer route between East and West, serving Port McNicoll and Fort William.



Sparkling waterfalls are typical of Canadian holiday spots. Between the St. Lawrence estuary and the Atlantic and the sheltered waters of the British Columbia Coast, there is a variety unexcelled in the temperate zone. Great cities, forests, rivers, prairies, mining country, the Great Lakes, mountains, these are Canada, too... the polish of the 20th Century... the romance of a historic past.

ACROSS CANADA

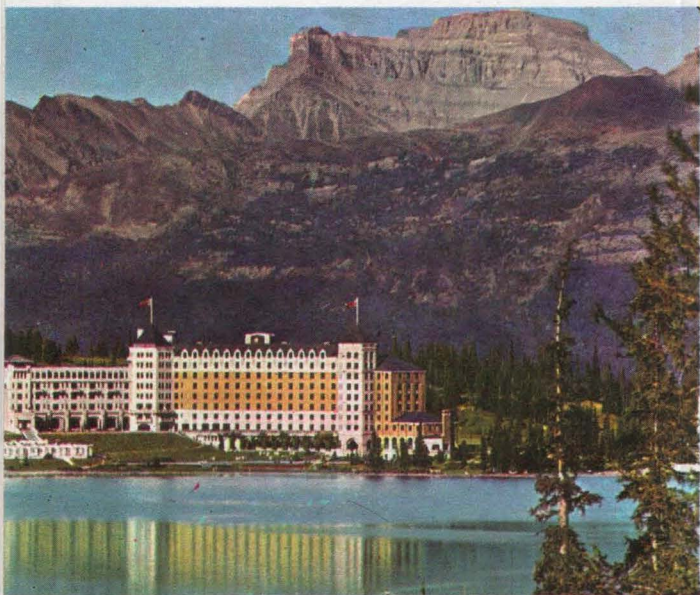
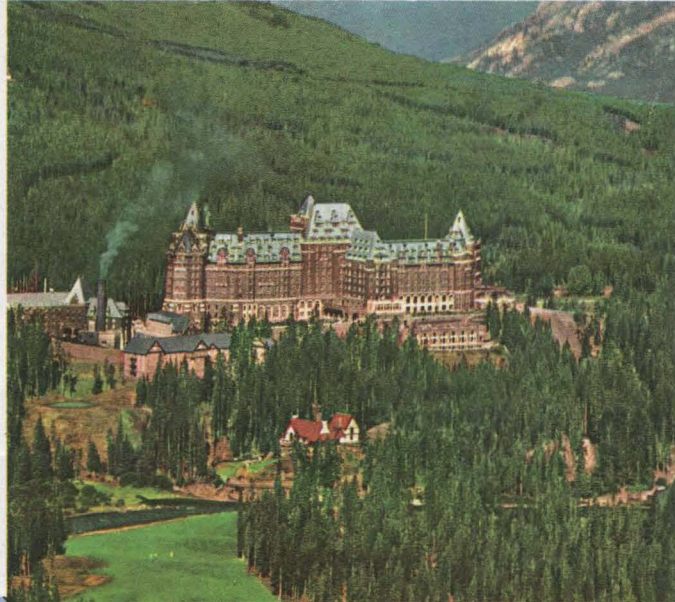
by

Canadian Pacific



Whether picnicking in the fresh air under a warm sun, or riding sure-footed mountain ponies in the Canadian Rockies, you'll enjoy a Canadian holiday. There are magnificent playgrounds from coast to coast—fish and game areas abound—and Canadians are a hospitable people. They welcome visitors and enjoy being hosts to guests.





3,000
delightful, friendly
miles...
beautiful sights to see
wonderful things to do...



Beautiful Banff Springs Hotel (left) and Chateau Lake Louise (centre left) Canadian Pacific resort hotels high in the Canadian Rockies, are gems in settings of unsurpassed beauty. Warm sunny days, cool "mountain air" nights—riding, hiking, golfing, swimming, boating and numerous other summer activities, excellent cuisine, personalized service—for guests to enjoy.

Typical of the scenery in the Canadian Rockies, Eagle Pass is but one of many beauty spots across the nation which travellers aboard "The Canadian" and "The Dominion" view through the glareproof glass of scenic-domed transcontinentals.



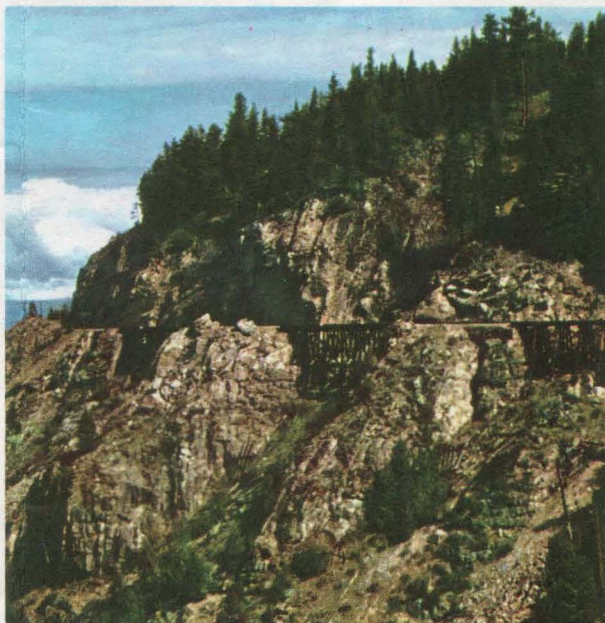
Vacation Land... Scenery Unsurpassed



A sightseeing bus in the Banff-Lake Louise area pauses beside the jade green waters of a mountain lake which reflects the towering mountain in its mirror-like surface.

Sure footed bighorn sheep roam the Canadian Rockies, as do deer, moose, elk and other animals that make their home in the valleys and on the slopes of great snow-capped crags. Occasionally a bear—sometimes with her cubs—may be seen in this area.

The spectacular Coquihalla Canyon... a scenic trip by Dayliner from Vancouver.



See the **Canadian Rockies**

by **CANADIAN PACIFIC**



The majestic Canadian Rockies form an impressive background for "The Canadian"—all stainless steel transcontinental. Diesel drawn, the crack streamliner boasts the most modern passenger equipment available—Scenic Dome Lounge Sleepers; Scenic Dome Coffee Shop Coaches; De Luxe Coaches, featuring full-length leg-rests. Sleeping Cars offer a wide range of accommodation to suit your travel budget, and Dining Room Cars feature superb Canadian cuisine. Designed for comfort and travelling ease, "The Canadian" offers Canadian Pacific service—a tradition that has been a byword with travellers for more than three-quarters of a century.

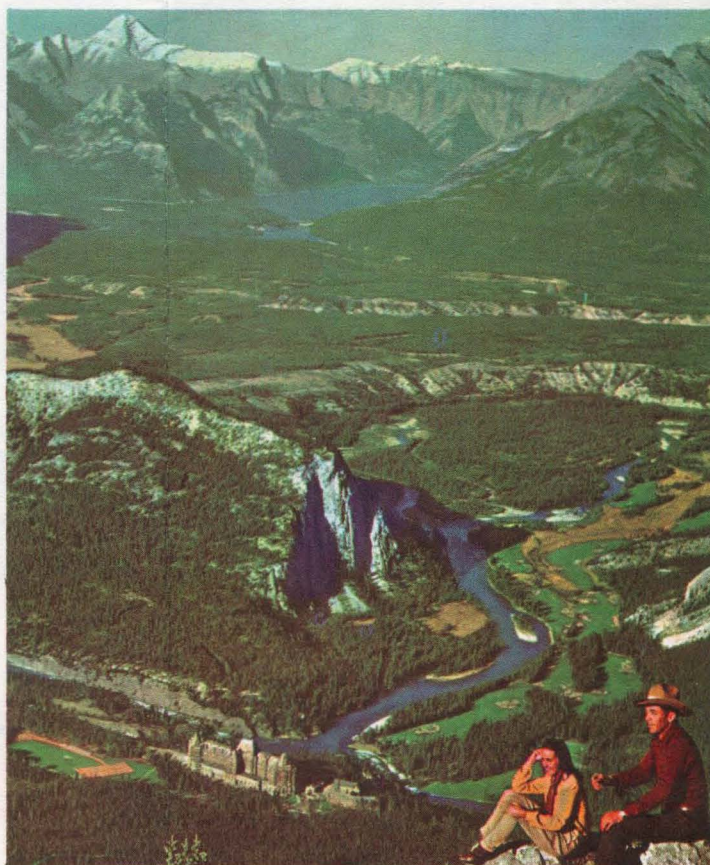
The mighty Thompson River winds its way majestically near
Spence's Bridge in British Columbia.



Canada's Playgrounds



Located at the junction of the Spray and
Bow Rivers, Banff Springs Hotel, one of the
world's most famous holiday resorts, is on
the main transcontinental line of the
"The Canadian" and "The Dominion".



Indian Days at Banff, an annual event that delights Western Canadian visitors. Each year the Stoney Creek Indians leave their reservation to attend this mid-summer "pow-wow".

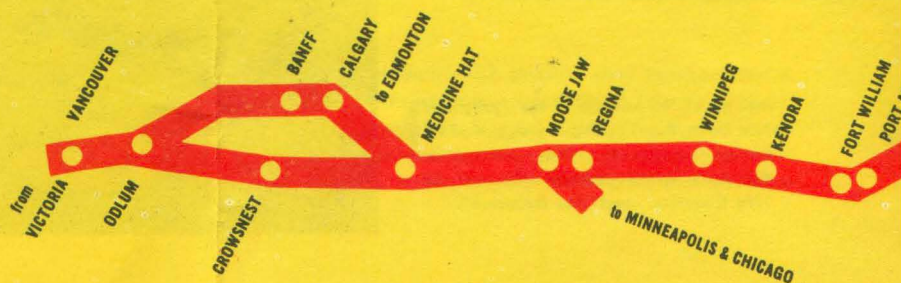
Canada is known for its many beautiful parks and playgrounds that delight young and old alike. Graceful swans are an attraction at Beacon Hill Park, Victoria, B.C.



Canadian Pacific OFFERS YOU THE FINEST...

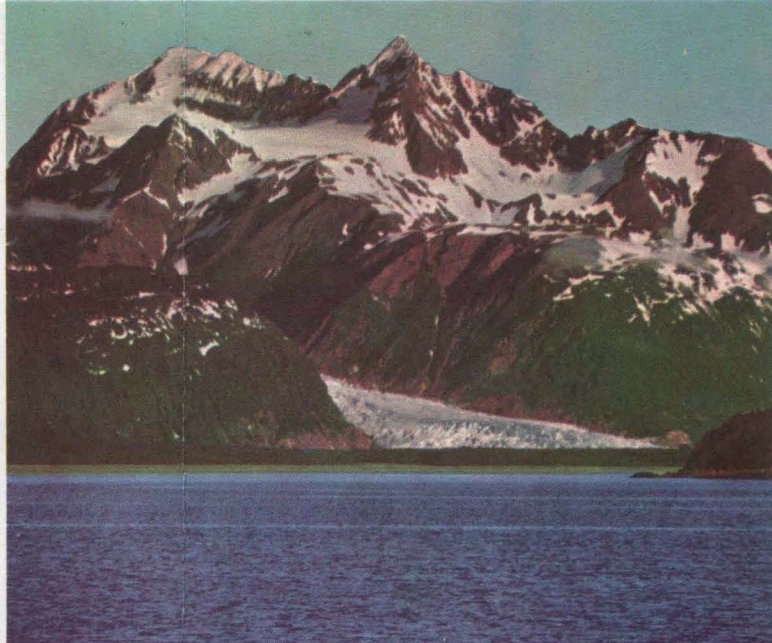
There is a world of service at your beck and call when you go Canadian Pacific. The most modern, up-to-date, comfortable equipment awaits your travel pleasure. Especially designed for your comfort, safety, and with convenient schedules, Canadian Pacific transcontinentals—"The Canadian" and "The Dominion"—invite you aboard for a rail voyage unsurpassed on this continent.

Comfort—service—scenery—Canadian Pacific's offer to discriminating travellers.



See
Canada by
Canadian Pacific
and
Really Relax...

Comfort
Service
Scenery...



Steel blue waters of an Alaskan glacier.



Suicide Rapids of the Thompson River in British Columbia.



Typical of the wealth of "things to see" in Canada are the varied photographs on this page—and throughout the booklet. There is so much to see and do—so many things to enjoy in Canada—that no one brochure can do justice to the variety. When visiting Canada, talk over your itinerary with your travel agent, or nearest Canadian Pacific representative.



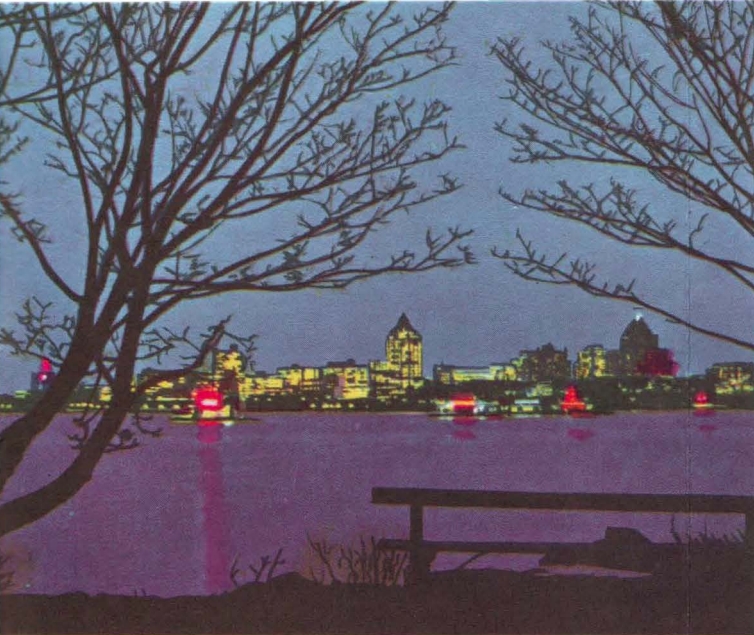
"The Canadian"—scenic dome streamliner—crossing Stoney Creek Bridge in the Canadian Rockies.



Active Pass—a picturesque sight on the short "Princess" voyage between Vancouver and Victoria, British Columbia.

Canadian Pacific

Shows
You
Canada



Vancouver, western terminus of the Canadian Pacific line—is a busy port serving the Orient, the North and Southern Hemispheres. Vancouver and Victoria, British Columbia's island capital city, are served by "Princess" liners, which operate a summer cruise service to Alaska. Tempered by Pacific Ocean breezes, British Columbia is an evergreen playground.

World famed are the Royal Canadian Mounted Police, whose training headquarters is at Regina, Saskatchewan. In the early days of the nation's history, these scarlet-coated riders of the plains maintained law and order throughout the West, gaining the respect and admiration of the country. Today, this vital force is Canada's major police body.



A "Princess" liner nears Victoria, B.C. Canadian Pacific's British Columbia Coast Steamship fleet of "Princess" liners maintains vital transportation service between Seattle, Port Angeles, Nanaimo, Victoria and Vancouver. Each summer, B.C.C.S. operates "Princess" cruises to Alaska—Vancouver to Skagway and return via the smooth inside passage—Prince Rupert, Ketchikan and Juneau.



Intimate, companionable, The Mural Lounge—beneath the scenic Dome of the Observation-Lounge Car—is a popular rendezvous. Feature of the lounge is a 20-foot canvas mural of one of 18 Canadian Parks. Etched glass and hand-carved linoleum panels depict flora of the parks. Service is from a gaily decorated bar.

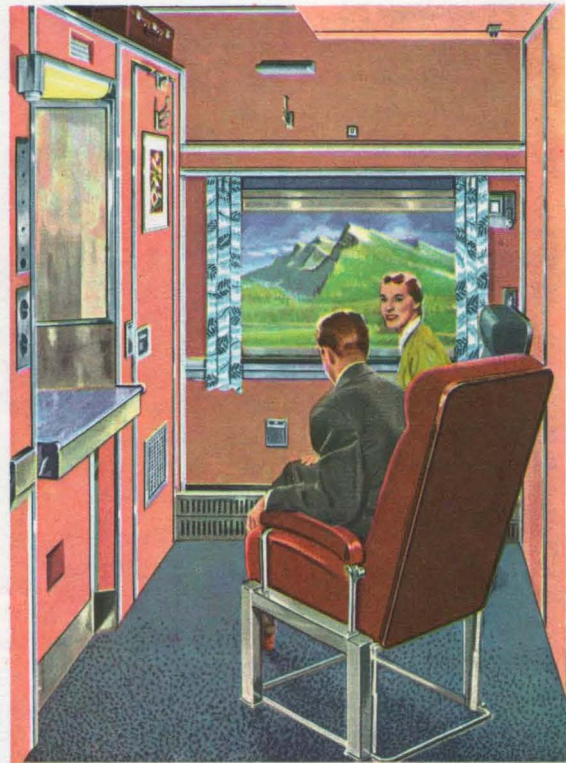
Canadian Pacific Transcontinental Equipment

Comfortable chairs, attractive drapes and Canadian decor, combined with wide windows, feature the Main Lounge of the Observation-Lounge Cars. The all-stainless steel lightweight car is a feature of "The Canadian" and "The Dominion". Comfort is the keynote, and service the byword.





Duplex Roomettes . . . compact, comfortable, economical, complete privacy, day and night, is provided in the smart Roomettes and Duplex Roomettes. Foam rubber disappearing beds, wide seats, with arm rests, individual washing and toilet facilities, wide windows, temperature and air-conditioning controls and full carpets are outstanding features of these travel apartments.



"Park", "Manor" and "Chateau" cars have bedrooms with disappearing beds, private toilet, moveable chairs—luxury with economy. By night foam-mattressed beds coax you to deep, restful sleep.



Upper and Lower Berths are two-seated and wide-windowed offering passengers a panoramic view of the countryside. At night, berths are zipper-curtained, air conditioned, private and comfortable.

Larger than bedrooms, compartments—equipped with triple-mirror wash-basin—dressing table, extra chairs for entertaining, private toilet add to daytime travel comfort.



See Canada . . .
 at
 eye-level
 from the
 high-level
 Scenic Dome
 an
 exclusive
 feature
 of
 Canadian
 Pacific
 trains
 across
 Canada.



Bedrooms "en suite" . . . ideal for family travel or business conference en route.

For reservations—Trains, Steamships, Hotels—the nearest Canadian Pacific Office
 or

