

# TRIANGLE ROUTE

VICTORIA

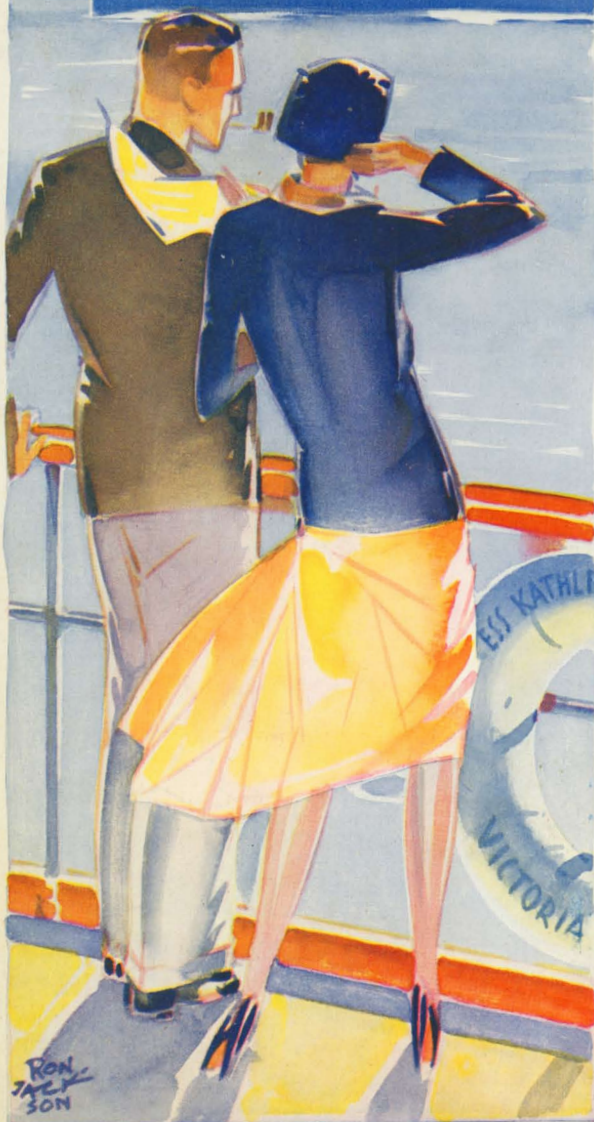
VANCOUVER

SEATTLE



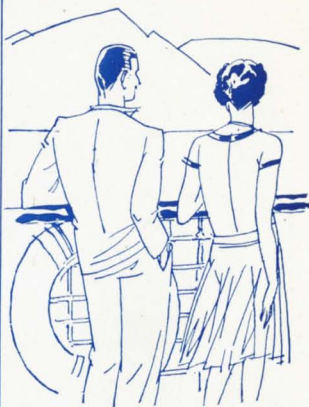
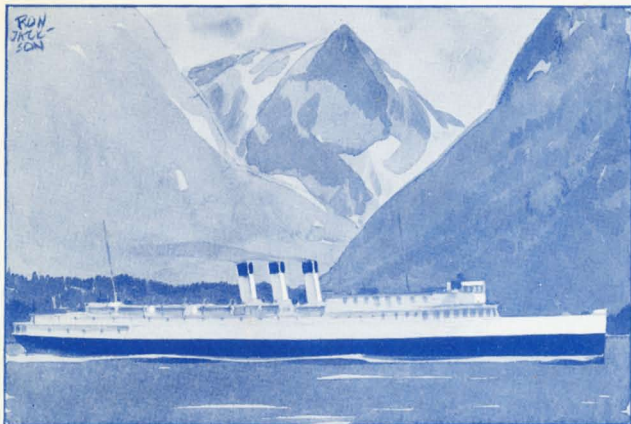
## CANADIAN PACIFIC

B.C. COAST  
STEAMSHIPS



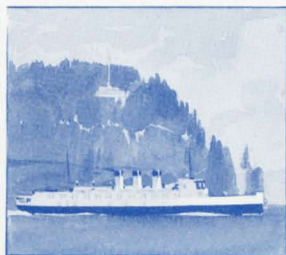


# SHORT SEA TRIPS

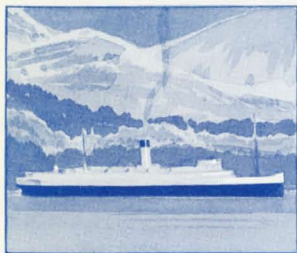


To Alaska and back, via the world famed Inside Passage, is a two thousand mile nine-day voyage from Vancouver. Palatial C. P. R. Princess Liners leave Vancouver twice a week during the Summer months. The splendid *Princess Charlotte* (above) 330 feet long, the *Princess Alice*, 289 feet and the *Princess Louise* (below) 330 feet, serve this popular travel route.

Splendid daily automobile ferry services are maintained by fast modern Princess liners between Victoria and Seattle, Vancouver and Nanaimo, Steveston and Sidney. Triple screw *Princess Elaine* (right) a typical ship on the all-year Nanaimo-Vancouver run.



West Coast of Vancouver Island Cruises. The new and renowned *Princess Norah* (above) and the popular *Princess Maquinna* sail regularly from Victoria on this spectacular six and a half day cruise. \$19.00 round trip, meals and berth included.



The magnificent, new and specially appointed sisterships *Princess Joan* and *Princess Elizabeth* (below) operate on the night service between Vancouver and Victoria. These 5500 ton, twin screw ships offer the last word in night accommodation, leaving every night at midnight in each direction. All-year service.



See Purser for Information





# Menu



Fruit Cocktail	Tomato Juice		
West Coast Pilchards	Potted Game on Toast	Sardine Parmesan	
Queen Olives	Celery		
British Columbia Clam Chowder	Beef Broth with Vegetables		
Cold Consomme			
Fried Pan Fish, Tartare Sauce	Steamed Smoked Salmon		
Pickled Walnuts	White Onions	Chow Chow	Sweet Pickles
Fresh Curried Shrimps with Rice	Au Gratin Spaghetti		
Braised Breast of Lamb, Green Peas	Fricassee of Chicken		
Grilled Loin Beef Steak with Mushroom Sauce			
Baked Jacket	French Fried Potatoes		
Fresh Vegetables in Season			

## SALADS

Lettuce and Tomato	Apple and Celery
--------------------	------------------

## *Cold Sideboard*

Sirloin of Beef	Turkey and Ham	Melton Mowbray Pie
Lamb, Mint Jelly	Corned Beef	Jellied Tongue
Fowl in Aspic Jelly		
Wine Jelly with Whipped Cream	Custard Pudding, Lemon Sauce	
Lemon Cream Pie	Ice Cream	
Assorted Cake		
MacLaren's Imperial, Canadian Sultana, Kraft Cheese		
Tea	Milk	Coffee

# ALASKA

## THE CANADIAN PACIFIC WAY

