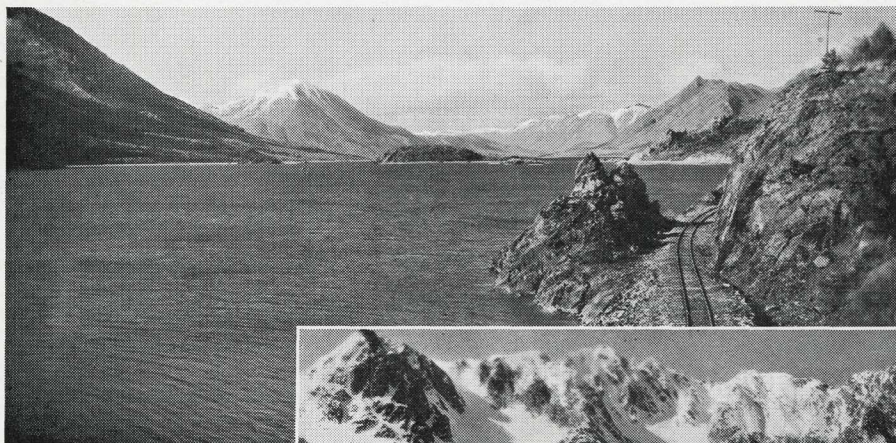


*The Empress Hotel*  
*Victoria, B. C.*

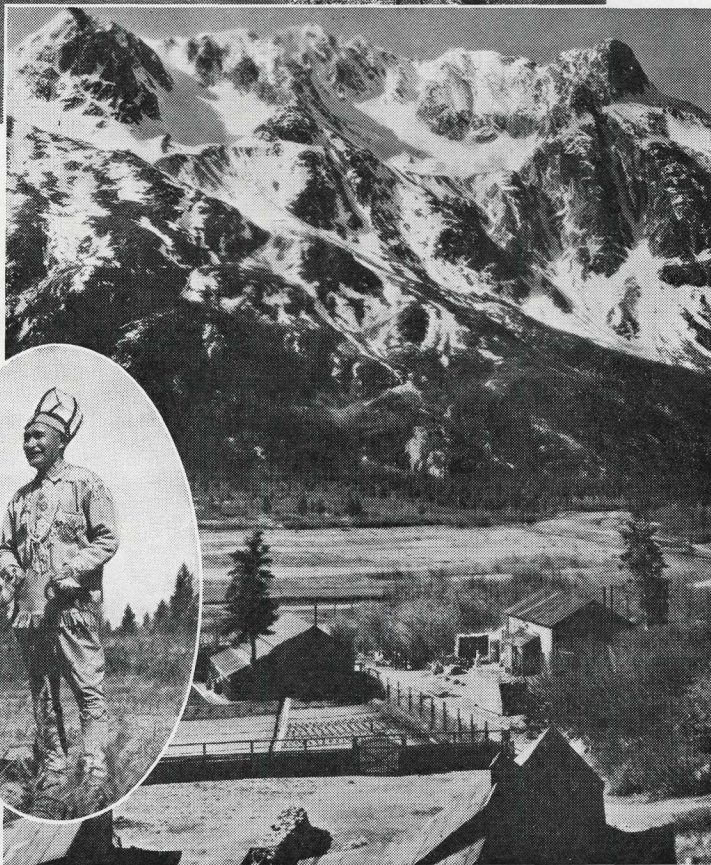






*Along the shore of  
majestic Lake Bennett.*

PHOTO BY G M TAYLOR

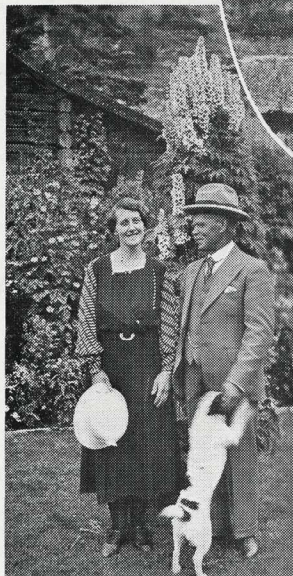


*Above: The homestead at  
Ben-My-Chree, West Taku Arm.*

PHOTO BY TAYLOR

*Patsy Henderson,  
Indian lecturer at  
Carcross.*

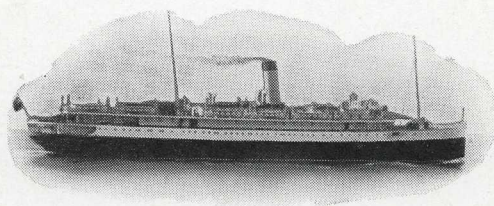
PHOTO BY ORDWAY



*In the beautiful  
garden at Ben-My-Chree.*



# Canadian Pacific Railway's Alaska Service



## Dinner

HORS D'ŒUVRES VARIES

CRABMEAT COCKTAIL

CHEESE STRAWS    ICED CELERY    RIPE AND QUEEN OLIVES

CREAM OF CELERY    CONSOMME ROYAL

STEAMED DEEP SEA COD, CARDINAL SAUCE

BOILED OX TONGUE, VINAIGRETTE    CHEESE OMELETTE    CURRIED PRAWNS WITH RICE

ROAST CHICKEN WITH CHESTNUT DRESSING, BREAD SAUCE

PRIME RIBS OF BEEF, YORKSHIRE PUDDING

HAUNCH OF MUTTON, RED CURRANT JELLY

BOILED, MASHED AND BROWNEED POTATOES    VEGETABLES IN SEASON

APPLE AND CELERY SALAD

MARMALADE PUDDING, MAPLE SAUCE    BOSTON CREAM PIE

COMPOTE OF APRICOTS    PRINCESS ICE CREAM    BANANA SHORTCAKE

FRESH FRUIT    NUTS AND RAISINS    ASSORTED CAKE

IMPORTED ROQUEFORT AND CANADIAN CHEESE

SALTED CRACKERS

CAFE NOIR

S. K. GRAY,  
Commander.



---

*Invalids or Passengers on Diet Please Consult the  
Chief Steward for Specially Prepared Dishes*

---



*Special Salads Served  
to your order*

## *Musical Programme*

S. S. PRINCESS LOUISE

MARCH—“French National Defile”	.....	<i>A. Turlet</i>
WALTZES—“Blossom Time”	.....	<i>Sigmund Romberg</i>
SERENADE	.....	<i>Toselli</i>
SELECTION—“Bohemian Girl”	.....	<i>M. W. Balfe</i>
MELODY—“Reconciliation”	.....	<i>Percy E. Fletcher</i>
SUITE—“Monsieur Beaucaire”	.....	<i>Frederick Rosse</i>

Numbers will be interpolated upon request to Mr. Lawrence Crawford,  
Orchestra Leader.

