



Banff



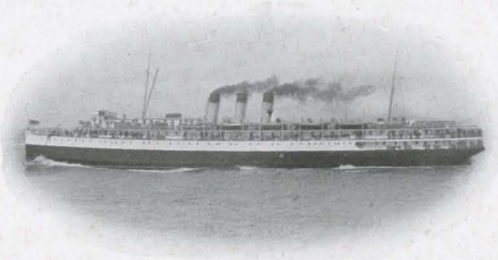
LAKE ATLIN



A FISHERWOMAN'S PARADISE



THE IMAGINARY LINE



# DINNER

HORS D'ŒUVRES VARIES

GRAPEFRUIT COCKTAIL

RIPE AND QUEEN OLIVES

CELERY EN BRANCHE

CHEESE STRAWS

MOCK TURTLE

TOMATO BOUILLON

STEAMED BABY HALIBUT, SHRIMP SAUCE

CHICKEN PATTIES, FRENCH TOAST

JUGGED HARE JARDINIERE

PRIME RIBS OF BEEF WITH BROWN POTATOES

ROAST STUFFED GOOSE, APPLE SAUCE

BOILED, MASHED AND BROWNEED POTATOES

VEGETABLES IN SEASON

SLICED TOMATOES

HEARTS OF LETTUCE, THOUSAND ISLAND DRESSING

APPLE PUDDING, CREAM SAUCE

DEEP FRESH FRUIT PIE

STRAWBERRY JAM TURNOVER

MAPLE ICE CREAM

ORANGE JELLY WITH WHIPPED CREAM

FRESH FRUIT

NUTS AND RAISINS

ASSORTED CAKE

IMPORTED ROQUEFORT AND CANADIAN CHEESE

SALTED CRACKERS

CAFE NOIR

*Invalids or Passengers on Diet Please Consult the  
Chief Steward for Specially Prepared Dishes*



*Special Salads served  
to your order*

## BANFF SPRINGS HOTEL BANFF, ALTA.

THE Scottish fur traders who first penetrated these mountain fastnesses over a hundred years ago were struck by the similarity to the wildest scenes of their own rugged highlands and felt here truly at home. In time the name of a Scottish highland town came to designate the little settlement which grew up at the confluence of the Bow and Spray Rivers. For they called it Banff.

¶ Later, when the Canadian Pacific opened up this great mountain playground for the visitor's enjoyment, they too caught the Scottish atmosphere. They raised an edifice like a great Scottish castle—baronial Banff Springs Hotel—and made Banff the Braemar of America.

¶ This great caravanserai, often referred to as the finest mountain hotel in the world, is one of the seventeen hotels, owned and operated by the Canadian Pacific, which form a convenient chain across Canada.

