

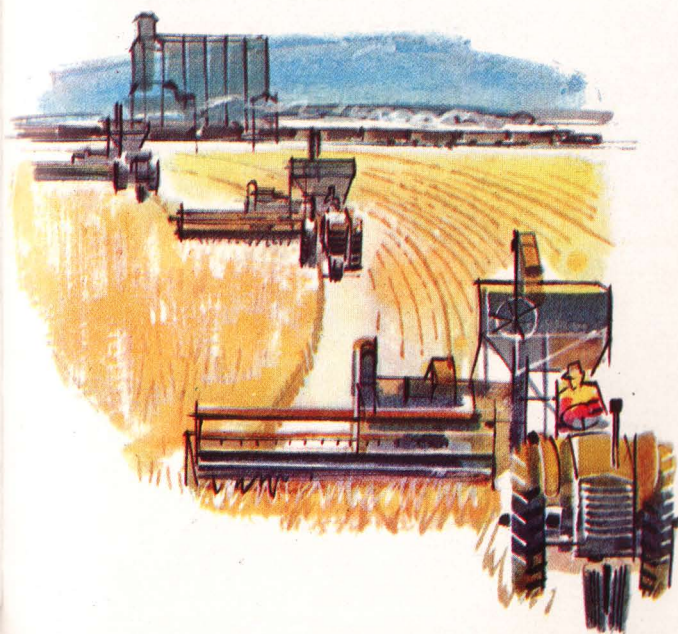
# Regina

*...Queen City of the Plains*



More than eighty years ago, Princess Louise, wife of Canada's Governor-General gave the "Queen City of the Plains" the name Regina in honour of her mother, Queen Victoria.

Regina, then capital of the pioneer North West Territories, now capital of the Province of Saskatchewan, has grown into a tree-shaded, wide-avenued, parklike city . . . startlingly different from the wide, wheat-growing prairies it dominates. Wascana Lake, enveloped in its park; formal gardens surrounding the imposing Legislature; modern buildings; oil refineries; the Royal Canadian Mounted Police Barracks; Museums; the million-dollar Provincial Exhibition plant; the tallest building in the busy city—Hotel Saskatchewan—these are Regina today.



# Racing Saddles



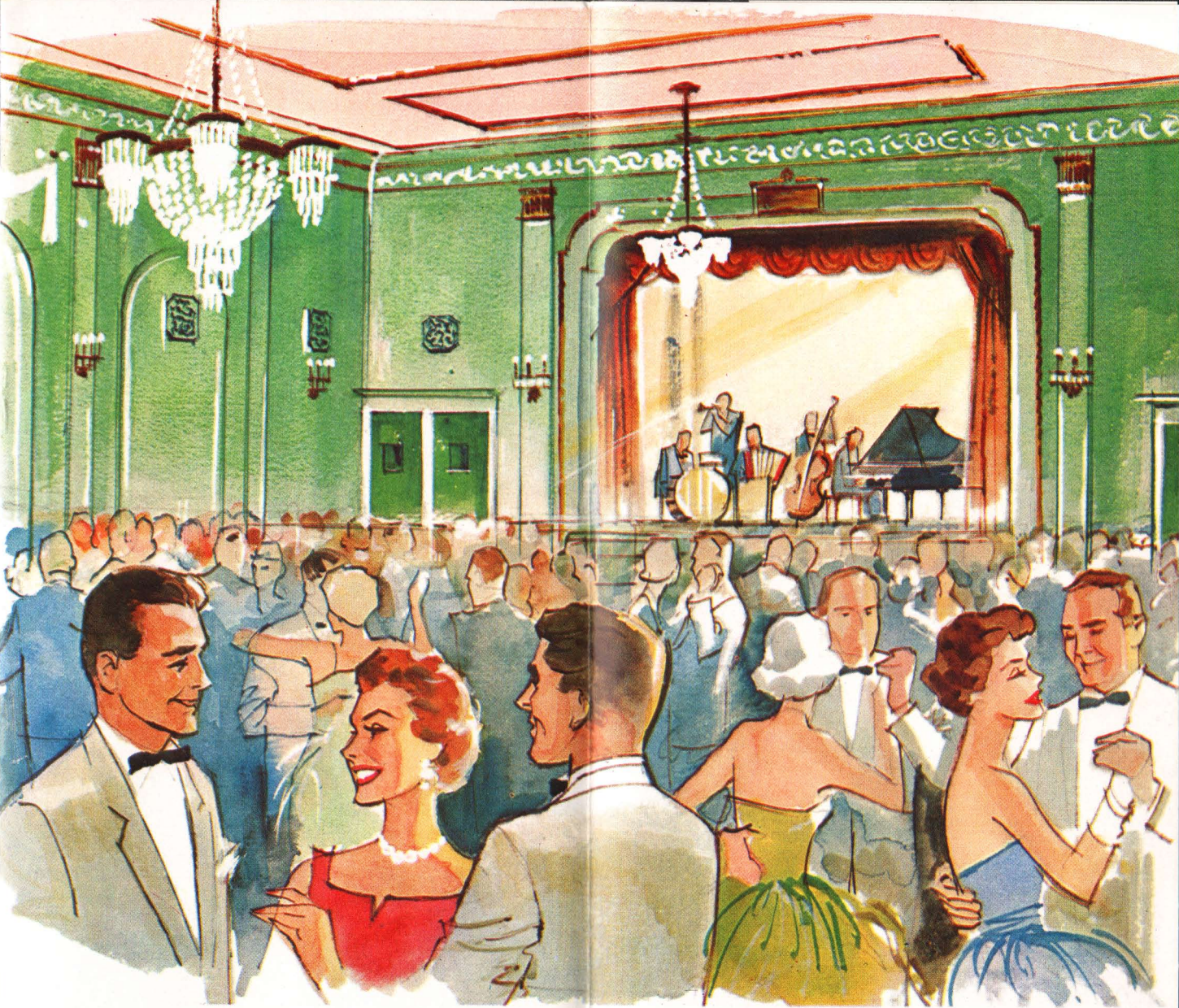
Gay "silks", the colours of racing stables known in the East, polished boots and wiry jockeys are a feature of Regina's modern tracks where thoroughbreds race frequently. A horse show is featured at the Regina Winter Fair . . . usually a March event, and six days of racing vie with livestock, agricultural and industrial exhibits at the Annual Provincial Exhibition each July.

Other seasons offer other attractions in the surrounding area . . . fishing in a dozen or more lakes in the park lands and prairies of the southern half of Saskatchewan are close at hand but the Pre-Cambrian Shield area to the North has 100,000 lakes teeming with Great Northern Pike, Arctic Grayling, Wall-eye and Lake Trout.

Widgeon, pintail, canvas-back and teal attract duck hunters in the early season . . . later green-neck mallard come south to feed on stubble fields close to the big waters.

# Colonial





# Room

Centre of Regina's social life, The Colonial Room of The Saskatchewan lends an air to parties, balls, receptions and other gay affairs . . . The Colonial Room seats four hundred for concerts or meetings.

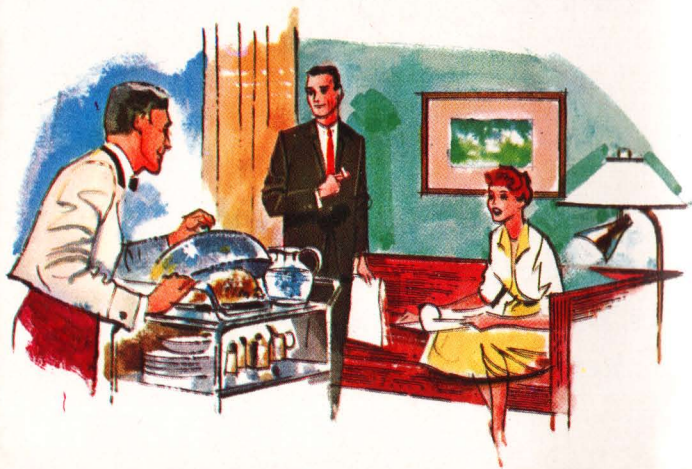


# The Saskatchewan

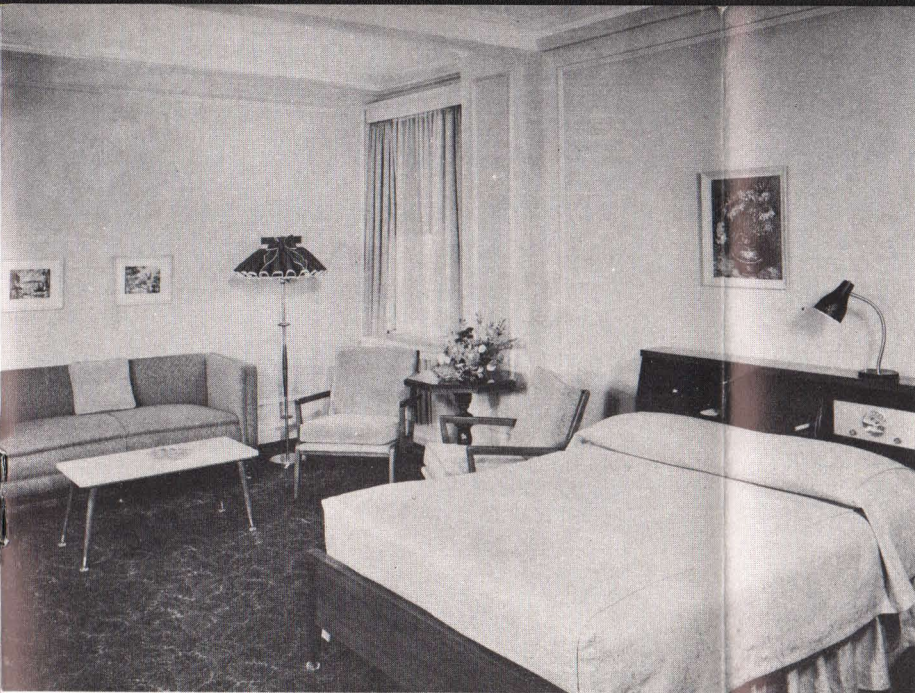
Every room outside . . . every room with bath . . . many rooms with television . . . accommodation ranging from single rooms to suites . . . air-conditioned public rooms . . . cocktail lounges . . . licensed dining room . . . prompt, efficient room service.



*Well appointed, comfortable—the living room of a suite*







*Double or twin beds are available, as requested*

Individual, like all Canadian Pacific hotels, but kept in the tradition of service, courtesy and comfort that characterizes the whole chain, The Saskatchewan has a welcome for every traveller. Whether it be business, a vacation or sport that takes you to the Queen City of the Plains you will enjoy your stay in this up-to-date hotel.

A few minutes by taxi from the Canadian Pacific trans-continental main line station . . . taxi, 50¢ minimum each way . . . checked hand baggage, per piece 50¢, trunks \$1.00 each way . . . The Saskatchewan faces a city park, commands magnificent prairie vistas from bedrooms.

Dining in The Ranch Room, characteristically refurnished and decorated this year, is a real western experience. The Blue Lounge is popular before and after lunch and dinner, open for casual enjoyment, too. The Colonial Room and The Oak Room are available for dances, banquets, meetings or conventions.

# Regina,

Sask., Canada

For business visitors' leisure and vacationists' pleasure The Saskatchewan is within easy access of golf, tennis, swimming . . . skating and curling, in winter. The nearby prairie-lands have furnished The Wascana Country Club and Regina Golf Club courses . . . guests can arrange privileges . . . and, within easy motoring distance, there is swimming at the Qu'Appelle Lakes or Regina, Lumsden, Arlington and Saskatchewan beaches.



*Prime Western Canadian  
roast beef—or metropolitan  
haut cuisine . . . your choice  
in The Ranch Room*





*Spacious ballroom, concert  
hall or convention room . . .  
The Colonial Room*

Convention committees and hosts of large events will find The Saskatchewan equipped to meet their requirements. Private banquet facilities range from an intimate dining room seating sixteen to The Colonial Room in which 300 can be served. The Canadian Room on the lower floor seats 120 for a meeting, 230 can dine in The Ranch Room and Blue Lounge. Two other private dining rooms seat 50 and 80 . . . or three rooms thrown into one dine 150 or seat 175 for a meeting.

Add to this flexibility a hotel staff experienced in convention arrangements, ample facilities for member registration, etc., and The Saskatchewan adds up to a convention hotel easy of access by rail, road or air . . . in a territory that has much in the way of unusual as well as standard recreation.



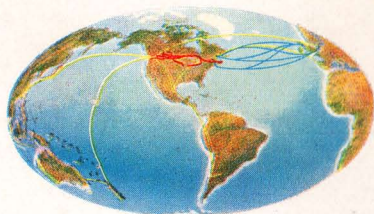
# The Saskatchewan

## A Canadian Pacific Hotel

REGINA — SASKATCHEWAN

A metropolitan hotel of 268 guest rooms, all outside, each with bath, many with television, strategically situated in the rich farm lands of Canada's great western plains. The Saskatchewan is headquarters for Rotary, Kiwanis, Lions, Kinsmen, Canadian, Women's Canadian, Soroptimist, Quota and Cosmopolitan Clubs.

Reservations and further information from your own agent; Manager, Hotel Saskatchewan; or any Canadian Pacific hotel or office.



# Canadian Pacific

*The World's Most Complete Transportation System*

RAILWAYS • STEAMSHIPS • AIRLINES • HOTELS • COMMUNICATIONS • EXPRESS • TRUCKING • PIGGYBACK

SEE YOUR TRAVEL AGENT



1960

# The Saskatchewan

## A Canadian Pacific Hotel

REGINA — SASKATCHEWAN

