



*Active Pass, B.C.*

*Canadian Pacific*

Like emeralds cradled in crinkled folds of blue  
velvet, the picturesque Gulf Islands stud the placid waters of  
Georgia Strait, on the Canadian Pacific water route between  
Victoria, the capital city of British Columbia, and  
Vancouver, third largest city in the Dominion of Canada.

One of the busiest water passages in this island group, Active Pass,  
is a half-mile-wide water portal through which vessels of  
all description and much international commerce passes.

While Active Pass does not want for activity, its name, strangely  
enough was derived from other than the continuing  
stream of freighters, coastal steamers, log tows and fishing  
craft which constantly ply its waters.

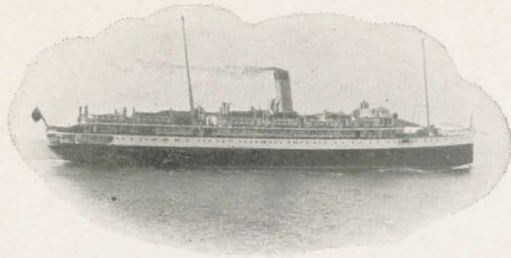
It was by pure coincidence that the U.S.S. "Active",  
a warship of undetermined category, and in  
command of a Captain Alden, set a course through  
the narrow passage between Galiano and Mayne Islands in 1855.

The captain called the uncharted pass  
after his ship. Today he would be taken aback by the  
volume of traffic which throbs through the Pass he named.

Ships of the Canadian Pacific "Princess" fleet will  
salute the Canadian flag now flying from the look-out  
post at the entrance to Active Pass, where the Stars and  
Stripes of the Union once fluttered past in the  
wake of a friendly voyage of discovery.

# Canadian Pacific Railway's Alaska Service

## SS. Princess Louise



### DINNER

June 1956

CHILLED APPLE, TOMATO OR VEGETABLE JUICE

ANCHOVY EGG      RIPE OR GREEN OLIVES      CHEESE STRAWS

ALASKA SHRIMP COCKTAIL, TOBASCO SAUCE

CONSOMME JARDINIERE

EGG SALAD BOWL, MAYONNAISE OR FRENCH DRESSING

FRUIT SALAD WITH COTTAGE CHEESE

STEAMED CODFISH, EGG SAUCE

GRILLED BRITISH COLUMBIA SALMON, LEMON BUTTER

BOILED OX TONGUE, CAPER SAUCE

PLAIN OR HAM OMELETTE

PRIME ROAST RIBS OF BEEF, AU JUS

ROAST YOUNG CHICKEN WITH DRESSING

---

STEAMED, BROWNEED OR MASHED POTATOES

VEGETABLES IN SEASON

---

STEAMED DATE PUDDING, SWEET SAUCE

LEMON MERINGUE PIE

WINE JELLY, WHIPPED CREAM

COMPOTE OF FRUIT

VANILLA ICE CREAM

ASSORTED CAKE

SCOTCH SHORTBREAD

SWEET BISCUITS

ROQUEFORT OR IMPERIAL CHEESE

SALTED CRACKERS

FRESH FRUITS

COFFEE NOIR



---

Invalids or Passengers on Diet Please Consult the  
Chief Steward for Specially Prepared Dishes

---





The sleek, conventional lines of the Canadian Pacific black and white, buff-funnelled "Princess" coastal vessels are well known to West Coast visitors from all parts of Canada and the United States.

Of the fleet of eight popular vessels serving the State of Washington, at Seattle and Port Angeles, and up and down the British Columbia Coast line to Alaska, the Princesses "Patricia", "Marguerite", and "Nanaimo" are the latest additions. They provide fast, reliable, scheduled service on the popular "Triangle Run". Their interior appointments and accommodations compare with some of the world's finest ocean cruise vessels.

The "Princess Patricia" and "Princess Marguerite" are twin, turbo-electric vessels, built to Canadian Pacific specifications at Glasgow, Scotland.

The names of the stylish vessels perpetuate the memory of earlier ships of the fleet.

The first "Princess Patricia" was once a "Fast Flyer" plying the Strait of Georgia from Vancouver to Nanaimo, B.C., and the original "Princess Marguerite" was torpedoed and sunk during the last war in the Mediterranean Sea while operating as a troop ship for the British admiralty.

The "Princess of Nanaimo", which came to the West Coast of Canada in 1951, also from Glasgow, Scotland, is a specially-designed vessel, equipped with double automobile decks and accommodation for 1500 day-time passengers. This fine new ship operates on a fast daily schedule, shuttling over the busy 36-mile sea lane between Vancouver and Nanaimo, and provides an important link between the West Coast mainland and the holiday and tourist attractions of Vancouver Island.