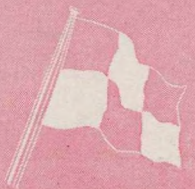
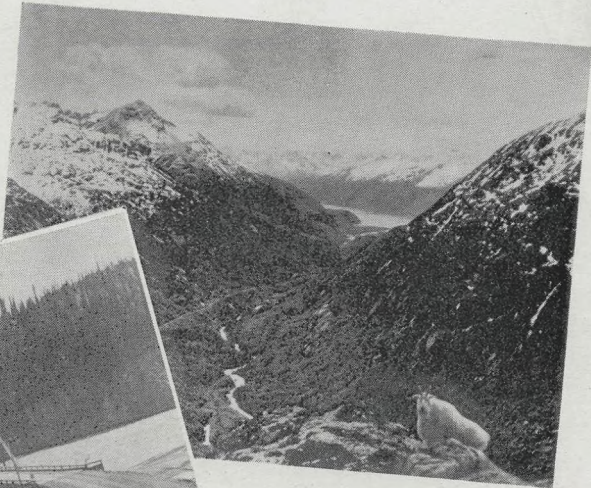




Canadian Pacific



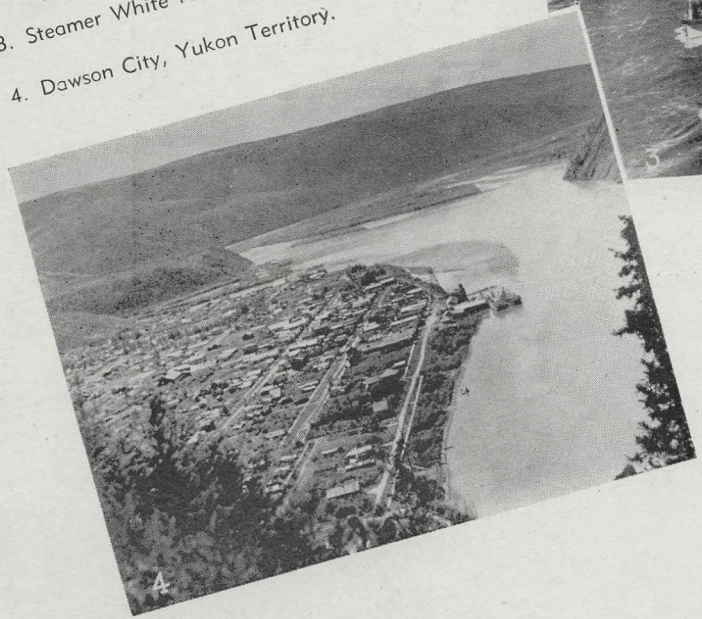


1. White Pass & Yukon Railroad, Dead Horse Gulch and Lynn Canal, Alaska.

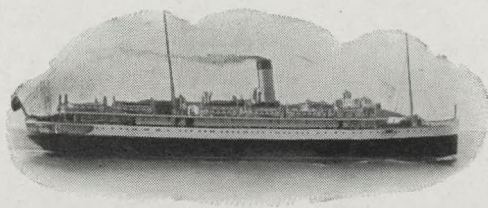
2. White River Bridge—Mile 1169—Alaska Highway, between Whitehorse, Y.T. and Fairbanks, Alaska. —Courtesy National Film Board, Canada.

3. Steamer White Horse in Five Finger Rapids. —Photo Webster & Stevens.

4. Dawson City, Yukon Territory.



Canadian Pacific Railway's Alaska Service



DINNER

CHILLED APPLE, TOMATO OR ORANGE JUICE

POTTED GAME ON TOAST RIPE OR GREEN OLIVES CELERY EN BRANCHE
SEAFOOD COCKTAIL

CREAM OF ASPARAGUS

CONSOMME ROYAL

QUARTER LETTUCE AND SLICED TOMATOES, MAYONNAISE OR FRENCH DRESSING
FRUIT SALAD WITH COTTAGE CHEESE

STEAMED HALIBUT, PARSLEY SAUCE BROILED CODFISH STEAK, COLBERT SAUCE

FRIED BANANAS, CUSTARD SAUCE

ROAST PORK, APPLE SAUCE

ROAST SPRING LAMB, MINT SAUCE

ROAST YOUNG DUCK, SAGE AND ONION DRESSING

BOILED, BROWNED OR MASHED POTATOES

VEGETABLES IN SEASON

STEAMED PLUM PUDDING, SWEET SAUCE

LEMON CREAM PIE

FRUIT JELLY, WHIPPED CREAM

MARMALADE TART

STRAWBERRY ICE CREAM

SCOTCH SHORTBREAD

ASSORTED CAKE

IMPERIAL, ROQUEFORT OR CANADIAN CHEESE

SALTED CRACKERS

FRESH FRUIT

COFFEE NOIR



*Special Salads Served
to your order*



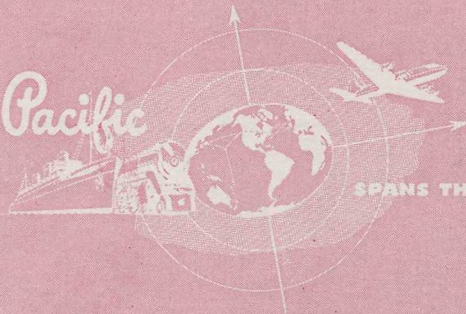
*Invalids or Passengers on Diet Please Consult the
Chief Steward for Specially Prepared Dishes*

"The Kicking Horse"

Probably the world's best example of a memorial to a "dumb" animal is the Kicking Horse River, famous as the guide which led engineers through the very spine of the Canadian Rockies as they built North America's first transcontinental railway, the Canadian Pacific. From Stephen, at the very top of "The Big Hill", to Golden, 38 miles to the west, this turbulent stream races through canyons and gorges to join the Columbia River more than half a mile lower. Magnificent peaks, glaciers, the lovely Yoho Valley, and the world-famous Spiral Tunnels are amongst the scenic wonders of the Kicking Horse Pass visible from Canadian Pacific transcontinental trains.

The horse? A pack animal of the party of engineers who surveyed the line. He kicked a surveyor into the river. History recalls the horse, but has forgotten the name of the victim who scrambled up the bank, dripping wet, and named the river.

Canadian Pacific



SPANS THE WORLD