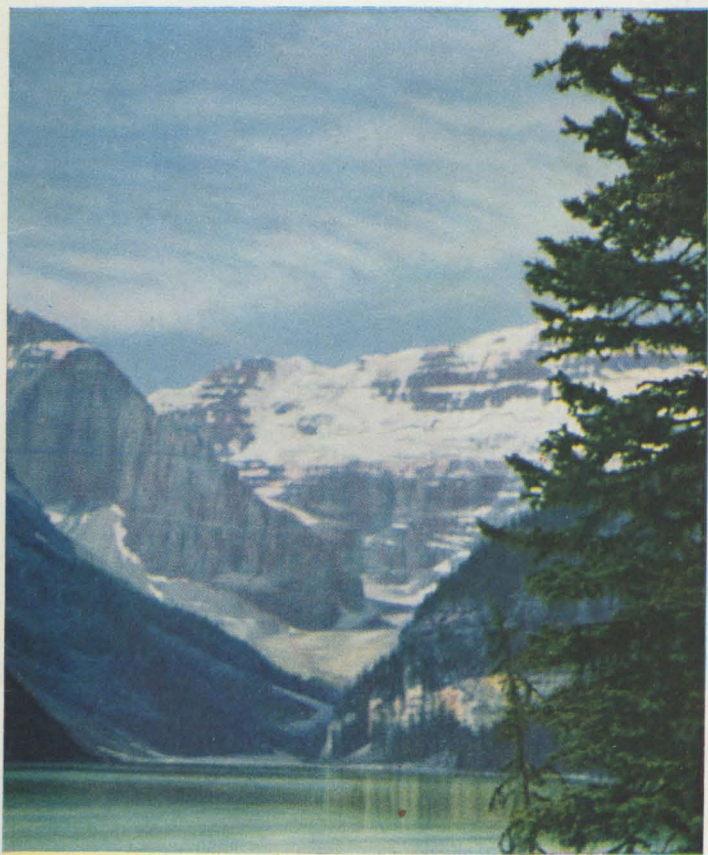


CANADA

by
Canadian
Pacific





According to an old adage, "it is better to travel hopefully than to arrive". That may have been true in the days of panniers, pillions and post-chaises — today, it is better to travel comfortably and to arrive refreshed — the Canadian Pacific way.

This is the day of air-conditioned, picture-windowed steel coaches, parlour cars, dining cars, observation cars — of economical upper and lower berths, roomettes, bedrooms — of compartments and drawing-rooms.

On this page travel comfort is shown in the privacy of the roomette (above) and genial spaciousness of coach travel, with foam-rubber-cushioned reclining seats that adjust to suit your mood.



Low in cost — high in comfort, the roomette, a completely equipped miniature room for day and night use, is illustrated at the top of this page. Ingeniously contrived as a sitting room by day and an equally private bedroom by night, your roomette has a full-length bed; disappearing wash-basin; toilet; wardrobe; luggage-space and plenty of lights and electric outlets.

Most economical form of night travel is the standard sleeping car berth — upper or lower. Partially enclosed by day, a section of four seats forms two full-length berths at night, each curtained securely, equipped with clothes-hangers, stowage space, its own air-conditioning controls, reading lights, spring mattress, fresh linen and porter's call button.

Canada, island-guarded by Newfoundland—lapped by the western waters of the Atlantic, and Vancouver Island—eastern-most of the fabulous islands of the Pacific, is 3,000 miles and more of beauty-filled countryside, bustling productive cities; game-filled lakes and forests; grain-gilded prairies; glacier-topped mountains; teeming rivers; lakes and health.

Twin threads of steel link the seas, serve farms, forests, factories, open remote beauty to the visitor. The Canadian Pacific Railway—seven decades ago the flux that fused scattered provinces into a great nation—today is the world's most complete travel organization.



Nova Scotia Cove

Nova Scotia, most easterly of the mainland provinces, counts an incredibly long coast-line due to its almost island formation; the fragrant Annapolis Valley; the world's highest tides; game fishing — inland and deep sea; hunting; the historical background of Longfellow's "Evangeline"; one of the world's great harbours amongst its blessings. Canadian Pacific hotels are: The Digby Pines, at Digby; Lakeside Inn, Yarmouth — open in summer; Cornwallis Inn, Kentville, year round headquarters for business and pleasure. Good hotels characterize the cities and holiday accommodation to suit all tastes and purses is available.

The Dominion Atlantic Railway unites Halifax and Yarmouth with Digby, port for C.P.S.S. Princess Helene, speedy passenger and automobile connection with Saint John, N.B.



Prince Edward Island Beach

Heavily wooded, with tide-water beaches and famous lake and river fishing and hunting country, New Brunswick attracts visitors the year round. Saint John, winter headquarters for Canadian Pacific Atlantic steamships, site of the famous Reversing Falls and Fredericton, the capital, in addition to being business centres with good hotels are starting points for lovely vacation areas. The Algonquin, Canadian Pacific summer resort at St. Andrews by-the-sea, just across the border from Maine, is noted as eastern Canada's outstanding holiday centre. For hunters, fishermen and up-country travellers, McAdam Hotel at McAdam Junction is convenient. Holiday accommodation throughout New Brunswick is reasonable and of high standard. Good connections are made with Prince Edward Island and its spacious sand beaches.

New Brunswick Resort

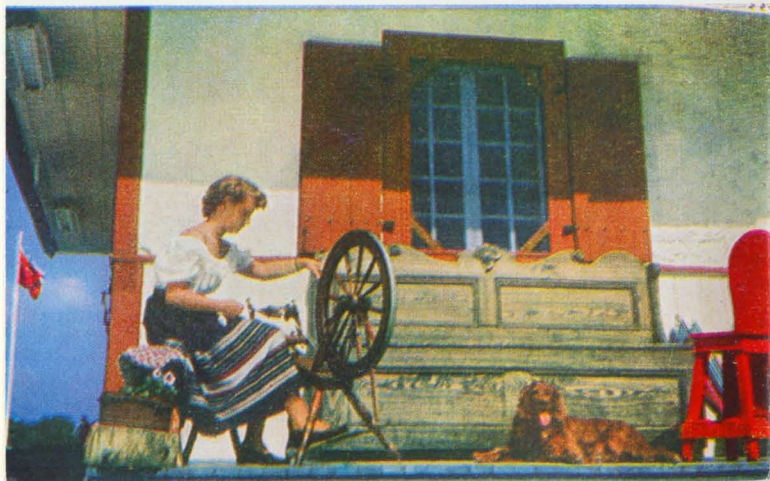




The Chateau Frontenac

Cosmopolitan Montreal, second largest French-speaking city of the world; ancient Québec, only walled city on the North American continent, the pleasure-filled Laurentian Mountains; the mighty St. Lawrence River; forests; prosperous farms; manufacturing centres; quaint villages; a culture four centuries old — these are the Province of Québec. French Canada's appeal is universal — the year round. Lakes, rivers, mountains — well-supplied with accommodation to fit taste and budget, are popular for hunting, fishing, riding, swimming or hiking holidays. Cities, towns and villages, famous for ecclesiastical architecture, tempt shoppers with attractive typical French-Canadian handicrafts. The Chateau Frontenac, "trade-mark of Québec", a metropolitan Canadian Pacific hotel, is the focal point for sightseeing, golf, fishing, the scenic Gaspé coast in summer; headquarters for skiing at Lac Beauport and Valcartier in winter.

Habitant Handicrafts





Montreal

Montreal, deep-sea port 1000 miles from the sea; transportation, manufacturing, trading and retail centre, is well-served by metropolitan hotels, department and specialty stores. Though predominantly French-speaking in population, with restaurants noted for the Gallic touch, the city is thoroughly bilingual — especially in its glittering night-life.

Trois Rivières, Sherbrooke, Rouyn, Noranda, Val d'Or, Megantic, Arvida, Drummondville, are important centres of the pulp and paper, mining, lumbering, aluminum and textile industries of Québec province.

Hunting and fishing areas, beauty in every season of the year, characterize the Laurentian Mountains.

Within easy reach of Montreal the summer resorts of this vast holiday area become ski-centres when powder-topped snow lies deep on the slopes.

Southward, towards the Green Mountains, the "Eastern Townships" beckon to summer and winter guests.

Autumn Colour, Laurentian Mountains





The Parliament

Westward from Québec to Manitoba, northward to Hudson Bay is the great central province of Ontario, rich in minerals, timber, farmlands and manufacturing. Ottawa, capital of Canada; Toronto, provincial metropolis; Hamilton; North Bay; Sudbury; Port Arthur and Fort William; Sault Ste. Marie; Kingston; Oshawa; Niagara Falls — these and other busy cities supply much of Canada, and export all over the world. From Toronto, site of the Royal York — largest in the Canadian Pacific hotel chain, Casa Loma, the Canadian National Exhibition, Royal Winter Fair, Royal Ontario Museum and many fine golf courses, to Niagara Falls orchard country lines the many beaches of Lake Ontario culminating in the Niagara Peninsula. West and south lie London, Lake Erie, the tobacco belt and Windsor, manufacturing border city.

The Royal York





Niagara Falls

Georgian Bay, the Kawartha Lakes; French River, Temagami, Muskoka, Manitoulin Island, the North Shore of Lake Superior, Nipigon, the Lake of the Woods — these are double duty playgrounds. In summer the mecca of holidaymakers who revel in the cool waters of tree-fringed lakes, paddle sleek canoes in rivers fast or placid — or just lounge in comfortable summer hotels, resorts or camps, Ontario's holiday country in proper season gives the top in sport to hunters and fishermen.

Fast-running rivers, white water, the still, deep, blackness of wilderness lakes, occasional sight of deer, moose, black bear, beaver — these reward paddlers who try the many charted canoe trips that pierce Ontario's northland.

Recollet Falls, French River





Canadian Locks, Sault Ste. Marie

Sea voyage in the heart of a continent? Sure! Between Port McNicoll on Georgian Bay — a few hours from Toronto, and Port Arthur and Fort William — twin ports at the north-western head of Lake Superior — with a call at Sault Ste. Marie, Canadian Pacific liners steam regularly with passengers, automobiles and cargo all summer long. As a holiday cruise or an interlude in the train journey across Canada the nearly-two-day trip with two restful nights afloat is popular with Canadians and visitors alike. Island-studded Lake of the Woods, its focus Canadian Pacific's "Devil's Gap Lodge" at Kenora, calls to anglers and outdoor devotees. On the transcontinental line, it is a holiday goal in itself or a restful, wooded stopover for explorers of Canada.

The North Shore, Lake Superior





Fort Garry

Winnipeg, history-making gateway to the western plains, capital of Manitoba, challenges the visitor. Sited on two mighty rivers, this modern city is a great manufacturing and railway centre with wide streets that reflect the spaciousness of the wheat-filled prairies. Northward within easy reach is Lake Winnipeg, holiday haven for the granary province. Through Manitoba reminders of the pioneer days still exist in Hudson Bay Company trading stations and Mounted Police posts. The capital, once known as Fort Garry, preserves the past by maintaining the Fort as a gardened museum — and for your comfort a Canadian Pacific hotel, The Royal Alexandra. Portage la Prairie, Brandon, Riding Mountain National Park, show other aspects of middle-western Manitoba.

Winnipeg Beach





As old as Canada, as new as tomorrow, Canadian Pacific is the first transcontinental railway—Canadian Pacific is a travel organization. Railway, Steamships, Express—these components equip Canadian Pacific.

RAILWAYS—

17,000 miles of railway line, from sea to sea, between great cities, to summer and winter resorts, remote holiday spots, the mining country; lake, river and coastal steamships, bus lines.

STEAMSHIPS—

The white Empresses — in regular passenger service between Canada and Europe: Montreal — Liverpool in summer, Saint John — Liverpool in winter. M. V. Aorangi — regular sailings between Vancouver, Victoria, Honolulu, Suva, Auckland, Sydney. Empress of Scotland, Christmas to Easter, West Indies cruises from New York. Fast freight service, Canada — London — Liverpool — Antwerp — Bremerhaven, on the Atlantic: Vancouver — Seattle — Tacoma — Yokohama — Kobe — Manila — Cebu, P.I. — Hong Kong, on the Pacific.

HOTELS—

Canadian Pacific Hotels — Canada's largest hotel chain — are at your service from sea to sea. Year-round

Canadian Pacific can and will arrange the efficient, easy way.



Regina

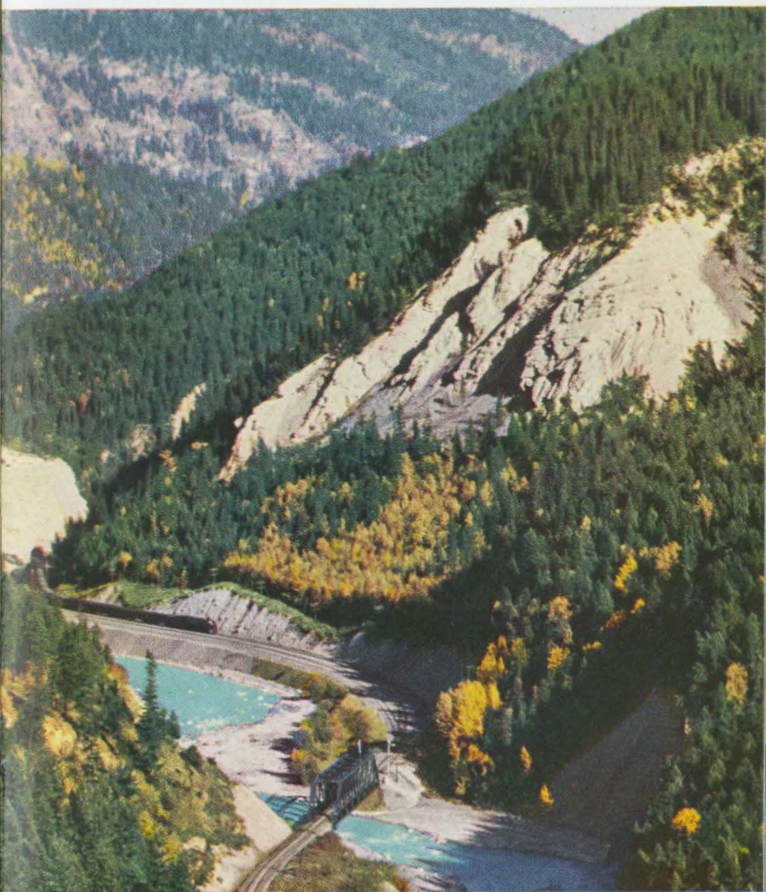
Canada is a land of surprises, not the least of them the Prairies — long thought of as flat fields of waving wheat relieved only by grain elevators. There are fields upon fields of wheat it is true. But they are relieved by tree-shaded farm buildings, coppices, windbreaks; bustling towns and cities.

In Saskatchewan, Prince Albert National Park and the provincial parks — Nipawin, Moose Mountain, Cypress Hills and Greenwater Lake — preserve wild life for your enjoyment. Regina, field headquarters of the scarlet-coated “Mounties” and capital of the province, is a tree-sheltered city served by The Saskatchewan, a Canadian Pacific hostelry. Moose Jaw and Swift Current, on the trans-continental line, and Saskatoon on the Winnipeg-Edmonton service of the Canadian Pacific are major Saskatchewan cities.

Trail Riders, Alberta



Alberta, once known as the foothill province, where the rising wheat plains slope into the fringe of the Canadian Rockies and wheat-growing gives way to cattle-ranching, is fast becoming the oil centre of Canada. Calgary, frontier city famed from early days, now is a manufacturing and residential centre on the Canadian Pacific transcontinental line. Here The Palliser represents the Canadian Pacific hotel chain. Edmonton, provincial capital, links Canadian Pacific's northern route from Winnipeg with Calgary, Medicine Hat, Lethbridge, Macleod and other holiday fields.



Kicking Horse Pass

Seven parks — Nemiskam, Wawaskesy, Wainwright, Wood Buffalo Park and Esk Lake under the province, Banff and Jasper National Parks and the international Glacier Peace Park — conserve wild life. Ranch holidays, riding on foothill trails once trodden only by Indian ponies, hunting for big game, shooting for birds, climbing, fishing, await you in Alberta.



Banff Springs Hotel

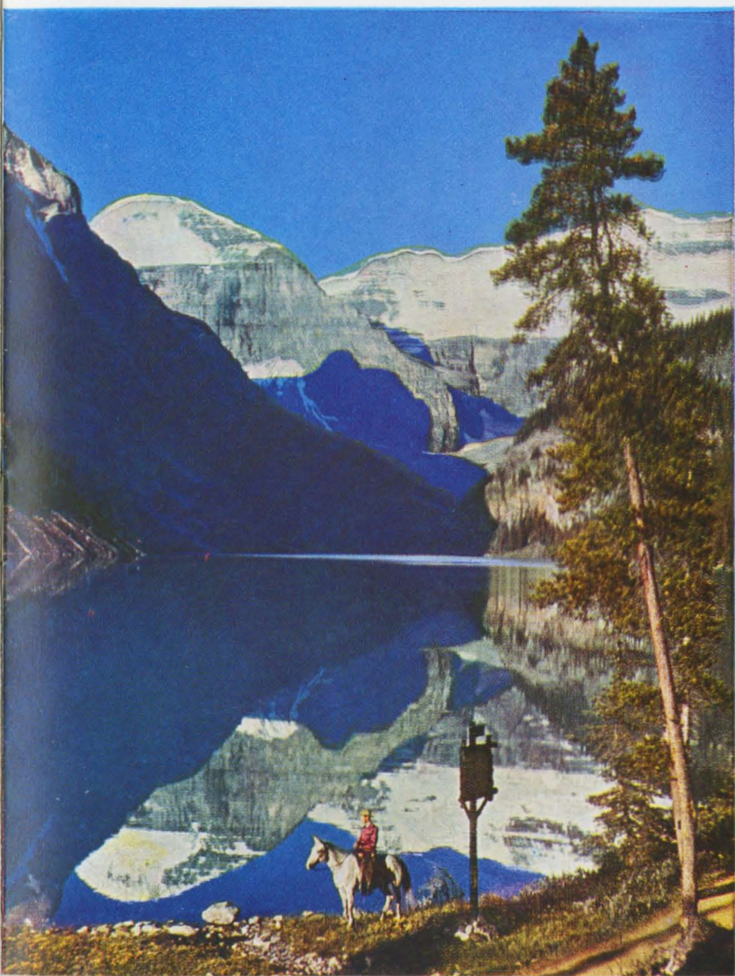
Nature surpassed herself in the Canadian Rockies. Visible as distant snow-topped peaks from Calgary, the eastern slopes rise sharply forty miles to the west and gradually enclose the Canadian Pacific main line as it traces the ever faster flowing Bow River upwards to its source. For more than 400 miles the spectacular railway line makes its way through gorges, rock cuts, broad peaks, lush valleys, glaciers, cataracts and hissing, spume-crested white water. In the heart of this mountain grandeur Canadian Pacific has developed a holiday area unsurpassed on the North American continent.

Shadowed by Mount Rundle, Cascade Mountain, Tunnel Mountain, Sulphur Mountain, the Bow and Spray Rivers unite two valleys. At their meeting point Banff Springs Hotel, a Canadian Pacific castle, overlooks the valleys, dominates Banff, Alberta.

Baronial in appearance, this luxury hotel is host, summer after summer, to guests from all over the world. Well-marked trails, magnificent mountain highways, 18 holes of mile-high golf, tennis courts, outdoor and indoor swimming pools lead to enjoyment. Climbing, trail-riding, camera-hunting — for this is a National Park where wild life is protected — motoring, and sight-seeing from the Alpine lift on nearby Mount Norquay fill days with healthful pleasure, nights with sound sleep. Deer, elk, moose, beaver, bear are plentiful — and unafraid in this boundless sanctuary. In winter and spring deep snows, long slopes, open high country, test skiers' skill. There is good accommodation available in the Canadian Rockies the year round.

Forty miles westward, but a near neighbour in Banff National Park, Lake Louise, Alberta, is the gateway to another mountain world. Southward, a mile away and 1000 feet higher is the mountain-ringed lake and Chateau Lake Louise, Canadian Pacific owned. Luxurious as Banff, in keeping with its setting, the Chateau is headquarters for riding, boating and climbing. Swiss guides who know every inch of the mountains are available with climbing equipment for real climbs, sure-footed mountain ponies know every inch of wild-flower bordered trails. Victoria Glacier, Mount Temple, the Beehive, overlooking the Chateau, the Plain of Six Glaciers, Lakes in the Clouds, the Valley of the Ten Peaks are nearby. Northward — a daytime return trip from Chateau Lake Louise on the Banff-Jasper Highway lies the magnificent Columbia Icefield, 150 square miles of ice formed by the age-old Athabaska, Dome and Saskatchewan Glaciers. The Great Divide, backbone of Canada, Lake Wapta — birthplace of the Kicking Horse River — Yoho Valley, these mark "the blue jeans country".

Lake Louise





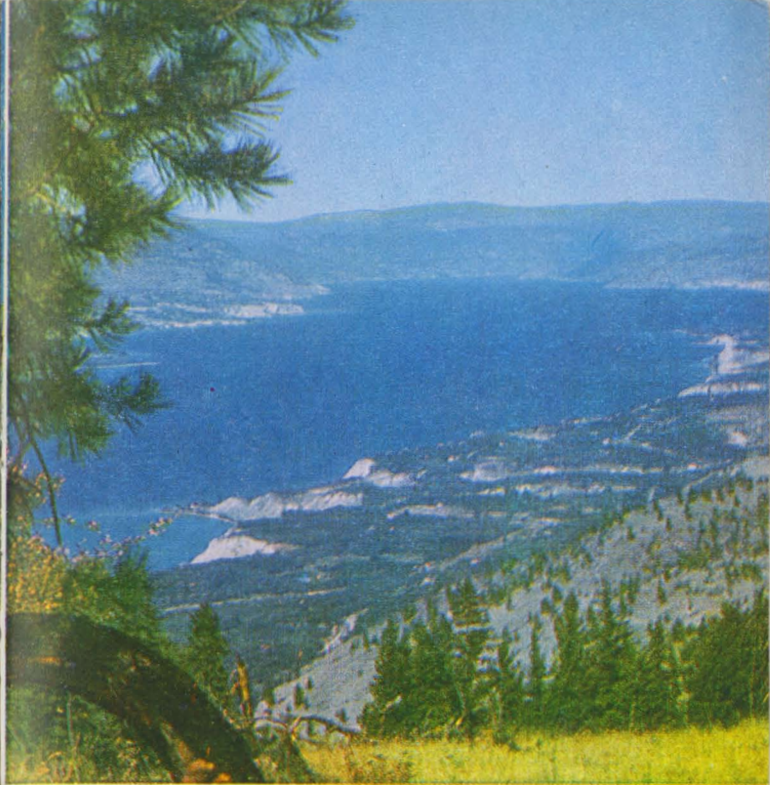
Banff-Jasper Highway

Just inside the western boundary of British Columbia lie the Kicking Horse Pass, the world-famous Spiral Tunnels, breath-taking Yoho Valley. In this land of glaciers, torrents, wooded slopes and sky-line beauty Canadian Pacific placed Lake O'Hara Lodge, Emerald Lake Chalet, Yoho Valley Lodge, Twin Falls Camp, Lake Wapta Lodge — informal spots close to nature, accessible from the transcontinental line.

Networks of roads from Hector and Field lead to secret haunts of mountain sheep — safe in Yoho National Park — rocky warrens of the hoary marmot, trails to Takakkaw Falls, age-old glaciers, sky-reaching peaks.

Canadian Pacific Mountain Lodge





Okanagan Lake

Mainland British Columbia, pierced by great rivers that make their way down the western slopes of the coastal range to the Pacific Ocean, counts mining, orchard and truck-farming, lumbering, manufacturing and fishing amongst its occupations. In addition to Mount Revelstoke, Glacier and Kootenay National Parks there are 17 provincial parks — including Tweedsmuir, largest wilderness park on the continent.

Vancouver, largest city and Canada's greatest Pacific port, is the terminus of the Canadian Pacific Railway's two routes through the Rocky, Selkirk, Cascade and Coast Mountains. The southern scenic route, which

Hotel Vancouver





Inner Harbour, Victoria

taps the main line at Hope, B.C. and Medicine Hat, Alta., serves Penticton, Nelson and Cranbrook via the spectacular Coquihalla and Crow's Nest passes.

Connecting Canadian Pacific networks link Vernon, Kelowna and the Okanagan Valley; the Arrow Lakes, Lake Windermere — beauty spots of the Canadian Rockies between the two through lines.

From Vancouver Canadian Pacific Air Embassies fly north and south Pacific routes.

Sleek, speedy liners of the Canadian Pacific British Columbia Coast Service serve Vancouver, Victoria, Nanaimo, Seattle, west coast Vancouver Island ports, the Gulf Islands, Powell River, Comox, Kitimat, Prince Rupert. Travellers to Canada's Evergreen Playground — Vancouver Island — enjoy The Empress, ivy-clad, year-round metropolitan hotel, farthest west in the Canadian Pacific chain.

The Esquimalt and Nanaimo Railway and a network of scenic roads lead to sandy beaches, hidden lakes, Strathcona Provincial Park, the Forbidden Plateau. Automobiles travel with their owners between the mainland and Vancouver Island. Accommodation for visitors to British Columbia is of the highest standards at prices to fit all budgets.

The Empress





Lynn Canal, Alaska

Some of the world's most spectacular scenery, deep fiords wooded to the water's edge, narrow passes where tide-rips boil and grumble, Indian fishing villages, log booms, totem poles, rocky islets, highlight the "Inside Route" between Vancouver and Alaska made famous by steamships of the Canadian Pacific B.C. Coast Service. Regular time table service is maintained the year round with additional sailings and cruises during the summer holiday season — between Vancouver, Ocean Falls, Prince Rupert, Ketchikan, Petersburg, Juneau and Skagway. Goat Harbour, Gardner Canal, Grenville Channel, Wrangell, Glacier Bay and the Behm Canal highlight summer cruises. Connections at Skagway with Whitehorse and Dawson City are frequent by the White Pass and Yukon Railway which follows the "Trail of '98" to Whitehorse and stern-wheel steamers of the same company that make their way down North on the Yukon River to Dawson. Connections by Canadian Pacific Airlines fit into cruise schedules to permit air-steamship cruise combinations to Alaska and The Yukon.



RAILWAYS • STEAMSHIPS

AIRLINES • HOTELS

COMMUNICATIONS • EXPRESS

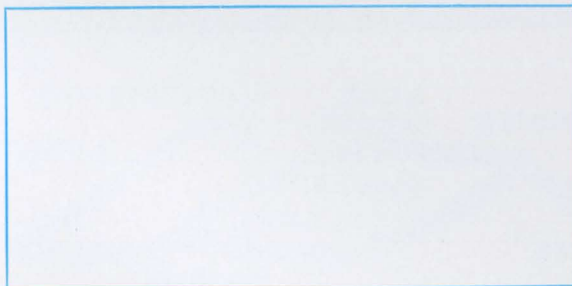


Drawing-rooms, right and left above, and compartments give family parties their own private quarters for day and night travel. Compartments, completely enclosed, have upper and lower berths, wash-basin, toilet and wardrobe. Drawing-rooms, even more spacious, have two beds and an upper berth, enclosed wash-room and toilet, comfortable, modern arm-chairs. On many cars bedrooms, compartments and drawing-rooms may be reserved as suites.

Observation and club cars (left), daytime lounges for sleeping car passengers, are pleasant places for chats, games or a quiet read. Libraries and current newspapers and magazines are available. You may order beverages, sandwiches, etc. But for full meal service there is the dining car (right), a bright, wide-windowed restaurant serving a la carte and table d'hôte meals. Snowy napery, shining silverware, deft service and menus that feature local delicacies, of course.



Let Canadian Pacific show you Canada—its sea-girt coasts, lovely islands, great rivers, deep forests, broad plains, inland lakes, its shining mountains. From sea to sea Canadian Pacific hotels and resorts make your pleasure their business. For your reservations or help in planning your travel there are Canadian Pacific offices the world over: or



Front cover: Lake Louise, Alta.
Back cover: Active Pass, B.C.

CANADA

by
Canadian
Pacific

