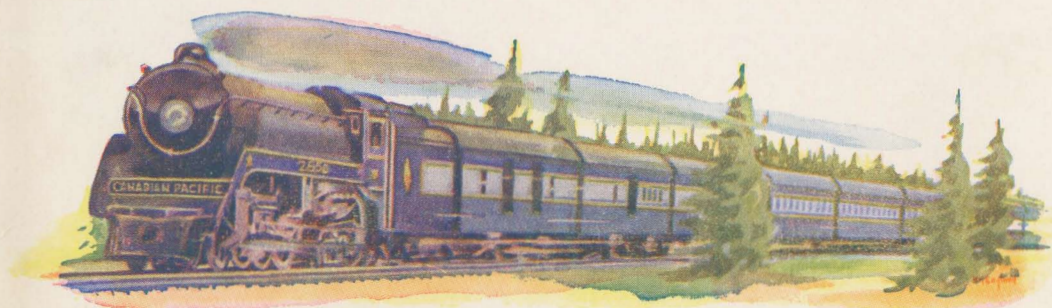


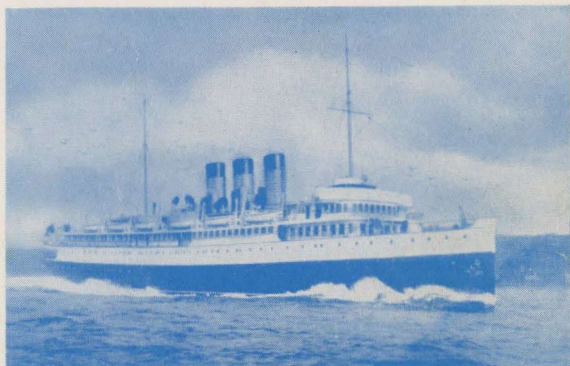


CANADIAN PACIFIC B.C. COAST STEAMSHIPS

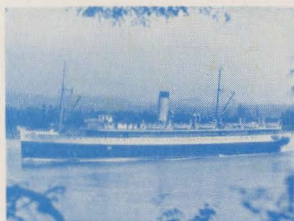




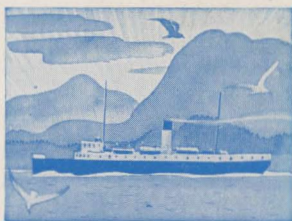
SHORT SEA-TRIPS



To Alaska and back. The splendid cruise ship *Princess Kathleen* is in regular service during the summer months on this famed Inside Passage route. A two thousand mile, nine and a half day cruise.



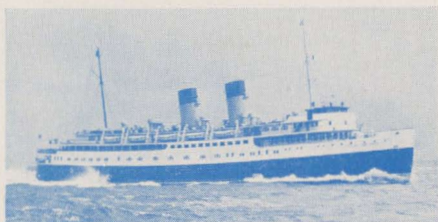
S.S. Princess Louise, above, makes regular eight-and-one half day voyages from Vancouver to Alaska and return.



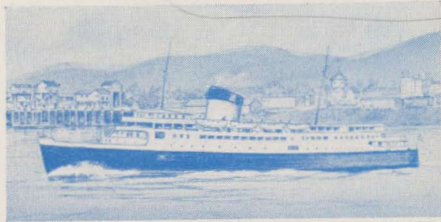
Above, *S.S. Princess Mary*. Regular service to Gulf Islands and East Coast of Vancouver Island.



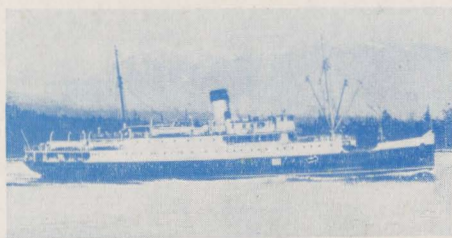
S.S. Princess Maquinna. Five and a half day cruise along the West Coast of Vancouver Island.



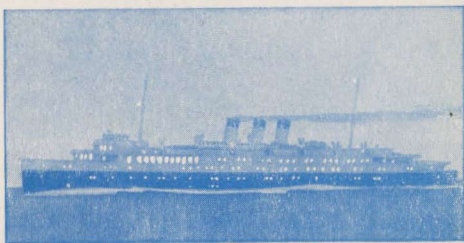
The palatial new sister ships *S.S. Princess Marguerite* and *Princess Patricia*, provide passenger and automobile services between Seattle, Victoria, Vancouver, Nanaimo.



S.S. Princess of Nanaimo, the most modern vessel in automobile and passenger accommodation. Regular service between Vancouver and Nanaimo.



The comfortable steamship *Princess Norah*. Vancouver to Prince Rupert via Campbell River, V.I., Ocean Falls, Kemano Bay, Kitimat. A 5½ day cruise through sheltered seaways noted for their spectacular scenery. Regular service.



Magnificent sister ships *Princess Elizabeth* and *Princess Joan* operating night service (passenger and automobile) between Vancouver and Victoria, either direction.

Our Boat

VANCOUVER - VICTORIA - SEATTLE SERVICE

Aug 13-52



Menu

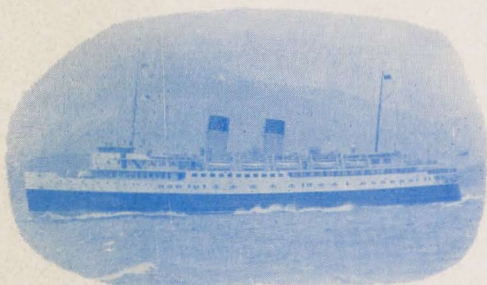


TABLE D'HOTE LUNCHEON

ONE DOLLAR SEVENTY-FIVE CENTS

Chilled Tomato, Apple or Vegetable Juice
Green Olives Mixed Pickles
Soup

CHOICE OF:

Gardener's Salad Bowl with Mayonnaise or French Dressing
Fried Pan Fish, Tartare Sauce
Grilled Salmon Steak, Maitre D'Hotel
Plain or Jelly Omelette
Grilled Spring Chicken Steak and Kidney Pie

COLD SIDEBOARD

British Columbia Salmon with Cucumber, Mayonnaise
Roast Beef Ham Turkey Ox Tongue
Served with Potato Salad

French Fried or Boiled Potatoes Vegetables in Season

Rice and Raisin Pudding, Custard Sauce
Deep Apple Pie
Wine Jelly with Whipped Cream Vanilla Ice Cream
Kraft or Canadian Cheese Crackers
Tea Milk Coffee

Passengers on diet please consult the Chief Steward for specially prepared dishes.

TO ALASKA

THE
CANADIAN PACIFIC
WAY

