

# *Canadian Pacific Hotels*



*from  
Sea  
to  
Sea*



C A N A D A

C A N A D A

U. S. A.

1949  
All rates shown in the following pages  
are subject to change without notice.

Cover illustrations of Banff Springs Hotel and  
Chateau Frontenac from originals by  
Leonard Richmond, R.O.I., R.B.A.

HALIFAX, N.S.

# *Lord Nelson Hotel*

C. L. WELDON  
Manager

LORD NELSON HOTEL,  
Halifax, N.S. (operated by  
the Lord Nelson Hotel Co.,  
Ltd.) overlooking the lovely  
Public Gardens, is the centre of  
the social, recreational and  
business life of Halifax. A  
modern hostelry, the Lord  
Nelson expresses perfectly

---

All rooms have bath or shower.  
The Lord Nelson is noted for its  
moderate charges.



the maritime atmosphere of  
Halifax and is noted for its  
comfortable, homelike accom-  
modation and tempting  
meals. Advance reservation  
recommended.

Boating, golf and tennis are  
among the many attractions  
available.

---

European Plan — Open All Year.  
MEALS — A la Carte, and Table  
d'Hote at popular prices.

For further information and reservations communicate with Hotel Manager  
or nearest Canadian Pacific Agent.



# Lakeside Inn

YARMOUTH, N.S.

R. M. ELLIS  
Manager



All rooms in hotel have baths

With its air of an Old English hostelry, Lakeside Inn proffers thoughtful service and outstanding meals. The Inn, and cottages which combine privacy with summer hotel congeniality, overlook Milo Lake, about a mile from Yarmouth. In addition to golf and tennis, you can enjoy yachting, fishing, speed-boating or swimming.

## RATES—AMERICAN PLAN

(Open June 24 to Sept. 9, 1949)

Daily per person

Single room and  
meals.....\$12.00

Double room and  
meals.....11.00

### Cottages:—

2 Bedrooms and Sitting Room,  
Minimum.....\$37.00 per day.  
4 people..... 45.00 per day.

Children 7 years of age and  
under—half rate. Over 7 years of  
age—adult rate.

TRANSFER — (2½ miles) — Taxi  
fare 50c each way, including hand  
baggage. Trunk 50c each way.

# Digby Pines

R. M. ELLIS  
Manager

A "must" on your holiday Down East in Canada is a stay at the Digby Pines, near picturesque Digby, Nova Scotia. Every room in the hotel, and each cottage, has a bathroom.



Vacation life at the Digby Pines can be seaside or countryfied as you choose. You can play golf on a challenging course, swim in a glass-

screened, warmed salt-water pool, play tennis, walk, just loaf or drive through lovely countryside.

There is plenty of garage room for your car.

## RATES—AMERICAN PLAN

(Open June 24 to Sept. 9, 1949)

Daily per person

Single room and meals..... \$13.00 and \$14.00  
Double room and meals..... \$12.00

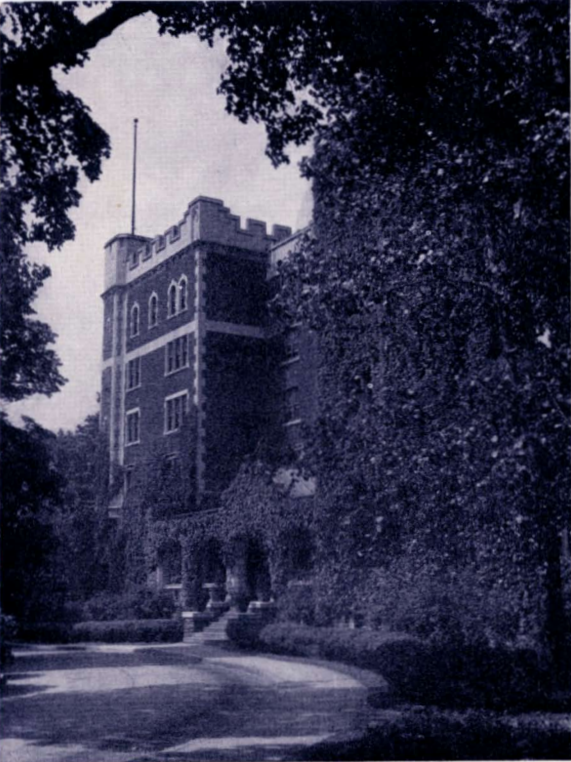
All rooms in hotel equipped with bath.

Children 7 years of age and under—half rate.  
Over 7 years of age—adult rate.

TRANSFER—( $\frac{3}{4}$  mile)—Taxi fare 50c each way, including hand baggage. Trunk 50c each way.

Cottages—

- 1-Bedroom and sitting room, minimum \$27.00 per day.
- 2-Bedrooms, minimum of three people, \$40.00 per day; four people, \$49.00 per day.
- 3-Bedrooms, minimum of five people, \$62.00 per day; six people, \$71.00 per day.



## *Cornwallis Inn*

KENTVILLE, N.S.

R. M. ELLIS  
Manager

Ideal combination of everyday and holiday hotel, Cornwallis Inn keynotes the Annapolis Valley and the Land of Evangeline.

For vacationers the Cornwallis is starting point for visits to romantic scenes in Grand Pre, Gaspereau, Minas Basin and Annapolis Royal. For business men it is the centre of a prosperous area and headquarters for buying and selling for the apple district.

Equally handy for businessman or holiday-maker is a good golf course.

DAILY RATES—(American Plan—Open All Year)

	per person
Single room and meals.....	\$9.00 and \$10.00
Double room and meals.....	\$8.00 and \$9.00

Sitting Room—\$7.00 extra per day.

87 rooms, all equipped with bath.

Children 7 years of age and under—half rate. Over 7 years of age—adult rate.

TRANSFER—( $\frac{1}{2}$  mile), Taxi fare 35c each way, including hand baggage. Trunk 50c each way.

SERVICE CLUBS—Rotary Club luncheon each Monday, Gyro Club dinner every second Friday.



## ADMIRAL BEATTY HOTEL



### RATES—EUROPEAN PLAN Open All Year

Single.....	\$3.00 to \$6.00
Double.....	4.50 to 10.00

Meals—A la Carte or Table d'Hote—  
Dining Room or Cafeteria.

## *Saint John N.B.*

E. B. SWEENEY, Manager

Owned and operated by the Admiral Beatty Hotel Co., Ltd., this is a modern hotel with 250 outside rooms, in the heart of the city opposite King Square, the garden spot of Saint John.

Motor trips invite you—shore drives, inland trips, visits to Loch Lomond and Lake Utopia. There is golf, tennis and swimming in season.

Just a mile or so off the entrance to Saint John Harbour in the Bay of Fundy, are fishing grounds for pollock, cod, mackerel, striped bass and many other kinds of salt water fish.

## McADAM, N.B.

McADAM HOTEL MISS E. E. QUINN  
Manageress

Rates—European Plan—Open All Year

	Single	Double
With bath.....	\$4.00	\$5.00
Without bath.....	3.00	4.00
Sharing bath.....	3.50	4.50

Adjoining McAdam Station, this Canadian Pacific hotel is comfortable. Tempting meals are served in the Dining Room. Faster service in Lunch Room between trains.

## RATES—AMERICAN PLAN

	Daily per person	
Single room (with running water) and meals.	\$10.00 to	\$11.00
Double room (with running water) and meals	9.00 to	10.00
Single room (toilet, running water) and meals	12.00 to	14.00
Double room (toilet, running water) and meals.....	11.00 to	13.00
Single room (with bath) and meals.....	15.00 to	17.00
Double room (with bath) and meals.....	13.00 to	15.00
Sitting rooms—\$7.00 to \$10.00 extra per day.		
Children 7 years of age and under, half rate.		
Over 7 years of age, adult rate.		

# Algonquin Hotel

ST. ANDREWS  
BY-THE-SEA, N.B.

J. A. CASHMAN, Manager

(Open June 25 to  
September 6, 1949)

Many-gabled, half-timbered, The Algonquin—just across the border from Maine—graces picturesque St. Andrews by-the-Sea. Here is the ideal setting for a country house holiday. Here for the season, year after year, you meet the discriminating.

IN THE EVENINGS — The Casino for life after sundown, is headquarters for movies, dancing, billiards and bowling. Set in the spacious grounds, this "rumpus room" is close enough to be handy—far enough to assure quiet for early sleepers.

TRANSFER —(1 mile)—Taxi fare 50c each way, including hand baggage. Trunk 50c each way.





## KATY'S COVE

The Algonquin  
private beach.



**GOLF**—Two excellent golf courses—an 18-hole and a 9-hole—live up to the Scottish tradition in turf, form, caddies and professional attendance—golf at its best.

**SWIMMING**—Katy's Cove for sheltered salt water swimming. Private sand beach, complete with dressing rooms, showers and tea house.

**TENNIS**—Four fast modern courts.



*The  
Chateau  
Frontenac*



Elevator from old city to Chateau

# Chateau Frontenac

QUEBEC, Qué.

G. J. JESSOP, Manager

Winter resort, summer resort and year-round metropolitan hotel, pinnacled and turretted like a 16th century stronghold, the Chateau Frontenac is unique. Its commanding site dominates the St. Lawrence River and romantic Québec City. It is the social centre of the capital of French Canada.

In the shadow of the Chateau lie the narrow streets of the old city. Nearby are famous historic landmarks—the Plains of Abraham—Governor's Garden—Wolfe-Montcalm monument—the city walls—the Citadel—the Basilica—the Ramparts—Dufferin Terrace.

Within easy motoring are the Shrine of Ste. Anne de Beaupre and its panorama, the Isle of Orleans, golf on a championship course and many scenic drives.

## DAILY RATES—(European Plan)—May 1 to September 30

Single with bath.....	\$7.00 to	\$9.50
Double with bath.....	11.00 to	18.00
Single without bath.....	4.50 to	6.00
Double without bath.....	9.00 to	11.00
Suites, Single Occupancy,	\$20.00 and	\$25.00
Double Occupancy,	30.00 and	35.00

Child 7 years or under occupying room with two adults—\$3.00 additional to double rate for cot. Over 7 years of age—adult rate. Adult rate for cot \$4.00.

TRANSFER: Between hotel and station ( $\frac{1}{2}$  mile); hotel and docks (1 mile). Trunk 50c each way.

LUNCHEON HEADQUARTERS—Lions, Monday; Rotary, Tuesday; Optimist, Wednesday; Kiwanis, Thursday.



## CHATEAU FRONTENAC

### WINTER RATES—EUROPEAN PLAN

October 1 to April 30

Single room with bath . . . . .	\$6.00 to \$8.50
Double room with bath . . . . .	9.00 to 15.00
Single room without bath . . . . .	4.50 to 5.50
Double room without bath . . . . .	7.00 to 9.00
Suites, Single Occupancy . . . . .	17.00 and 20.00
Suites, Double Occupancy . . . . .	25.00 and 30.00

Child 7 years or under occupying room with two adults—\$3.00 additional to double rate for cot. Over 7 years of age—adult rate. Adult rate for cot \$4.00.

Meals—A la Carte, also Table d'Hôte and Combination meals at reasonable prices in the Main Dining Room. Lower priced meals served in the Coffee Shop.

The Christmas-New Year season at the Chateau Frontenac is famous. The musical procession of the Boar's Head and Baron of Beef is traditional at the old-fashioned Christmas dinner. The carnival gaiety of New Year's Eve, the vintage wines of the Chateau and the rhythms of its orchestras are enjoyed by guests from every part of Canada and the United States.



Winter sports in Québec radiate from the Chateau Frontenac and its Ski-Hawk Club. Ideal country with ski-lifts and tows at Lac Beauport and Valcartier reached by good bus service makes Québec a skier's mecca. The modern parallel ski technique is taught by expert instructors of the Ski-Hawk Schools.

On Dufferin Terrace overlooking the St. Lawrence River, a triple chute toboggan slide and open air skating rink erected by the Chateau provide nearby sport and exercise. Other attractions are hockey matches and curling bonspiels.

# *Largest Hotel in the British Empire*

Connected with the Union Station by subway (trunk 75c each way) the Royal York, 1,200 room, year round, European plan hotel, is close to business, theatres and shopping.

All rooms are outside, have radio, tub and shower.

## RATES—EUROPEAN PLAN

Single.....\$ 6.00 to \$ 9.50  
Double..... 9.50 to 13.00

### Suites:

Single.....\$15.00 up  
Double..... 19.00 up

### Parlour bedrooms:

Single.....\$ 9.00 and \$ 9.50  
Double..... 12.50 and 13.00

Child 7 years or less in room with two adults—\$1.00 additional to double rate for cot. Over 7 years—adult rate.

Imperial Room—String ensemble at luncheon and dinner. Afternoon tea. Supper dance every week night.

Venetian Cafe—Popular priced A la Carte and Table d'Hote meals. Sandwich Shop and Soda Fountain on Arcade Floor.

THE ROYAL YORK  
TORONTO, ONT.

J. JOHNSON  
Manager



## THE ROYAL YORK TORONTO, ONT.

Toronto—on Lake Ontario, overnight from many Canadian and U. S. cities, is ideal for conventions, banquets, meetings, dances and other social events.

The Royal York, largest hotel in the British Empire, has outstanding convention facilities—three large rooms all on one floor: Banquet Hall, 10,725 sq. ft.; Convention Hall with mammoth organ and complete stage, 9,100 sq. ft.; Ball Room, 5,625 sq. ft.; all air-conditioned; 20 meeting rooms, exhibit space, secretarial offices.

And, modern in decor, sophisticated in service, Toronto's newest rendezvous, The Princess Room.

Call on the Convention Manager to help plan your meeting and the Maitre d'Hotel for social functions.





## THE ROYAL YORK

For balls, business organization meetings or banquets the spacious air conditioned public rooms of the Royal York Hotel are equipped to give maximum service.

Toronto's night life takes on extra glitter in the Royal York Hotel where outstanding name bands and clever song stylists set a gay tempo.



### LUNCHEONS:

Advertising and Sales Club, 2nd and 4th Tuesday each month; Associated Canadian Travellers, 1st Saturday each month; Canadian Club, Monday; Canadian Progress Club, Thursday; Electric Club, Wednesday; Empire Club, Thursday; Gyro Club, Tuesday; Kiwanis Club, Wednesday; Life Underwriters Association, 3rd Thursday; Lumbermen's Credit Bureau, 3rd Wednesday; Optimist Club, Wednesday; Queens Alumni Luncheon Club, 2nd Monday; Rotary Club, Friday; Toilet Goods Manufacturers, 1st Monday each month.

### DINNERS:

Kinsmen Club, every other Thursday; Quota Club, 2nd and 4th Tuesdays each month; Purchasing Agents Association, 2nd Wednesday; Sales Research Club, 1st and 3rd Tuesdays; Soroptimist Club, 1st Tuesday; Toronto Club of Printing House Craftsmen, 4th Wednesday; Toronto Railway Club, 4th Monday; Young Men's Canadian Club, every other Monday; Zonta Club, every other Wednesday.

J. FORREST  
Manager

# Devils Gap Lodge

KENORA, ONTARIO

(Open June 11 to Sept. 8, 1949)

Fishing in Lake of the Woods and nearby waters, swimming and diving handy to the Lodge, a safe beach for children, golf, tennis, rowing, canoe and motor launch trips, boatmen and guides—all these guarantee your Devil's Gap holiday.

For fishermen the Kenora district offers small mouth black bass, maskinonge and pickerel. Launches, boats and canoes, boatmen and guides are available at reasonable rates.

Every bungalow has electric lights, hot and cold running water and toilet—some have showers.

## RATES—AMERICAN PLAN

Including room and meals

Daily rates  
per person

In Cottage—With toilet, basin and running water:

Single, in twin-bed cottage . . . . . \$ 9.00

Double (two persons), in twin-bed cottage . . . . . 7.00

Child 7 years or under, accompanying two adults, in extra bed or cot in cottage or verandah . . . . . 4.50

Additional adult (or child over 7 years) . . . . . 6.00

In Cottage—With toilet, shower bath, basin and running water:

Single room, in four-room cottage . . \$ 9.00

Double (two persons), in twin-bed cottage . . . . . 8.00

Child 7 years or under, accompanying two adults, in extra bed or cot in cottage or verandah . . . . . 5.00  
Additional adult (or child over 7 years) . . . . . 7.00  
Single occupancy of twin-bed cottage . . . . . 11.00

TRANSFER—Station to dock by taxi, and dock to lodge by motor launch—inclusive price \$1.00 per person each way. Hand baggage free. Trunk 50c each way.

NOTE—Cottages at Devil's Gap Lodge contain 1 or 2 rooms, some with and some without shower bath. All are equipped with hot and cold running water, toilet, screened verandah, and twin beds.



# Royal Alexandra Hotel

WINNIPEG, MANITOBA

H. C. MACFARLANE, Manager

This 445 room hotel, linked by covered way to the Canadian Pacific station, is near business, shopping and theatrical districts of Manitoba's capital. Many service clubs and social organizations meet there.

## DAILY RATES—EUROPEAN PLAN

Open All Year

Single with bath—\$5.00 to \$7.00.

Double with bath—\$7.50 to \$10.00.

Suites—Single.....\$11.00 up  
Double..... 15.00 up

Child 7 years or under occupying room with two adults—\$1.00 additional to double rate for cot. Over 7 years of age—adult rate.

A la Carte and Table d'Hote meals are served in the Dining Room at popular prices. For the convenience of less leisured diners there is a coffee shop.

Covered passageway between hotel and Canadian Pacific Station. Trunk 25c each way.

EXCELLENT ACCOMMODATION IS  
AVAILABLE FOR MEETINGS, BANQUETS  
AND CONVENTIONS

## MEETING HEADQUARTERS

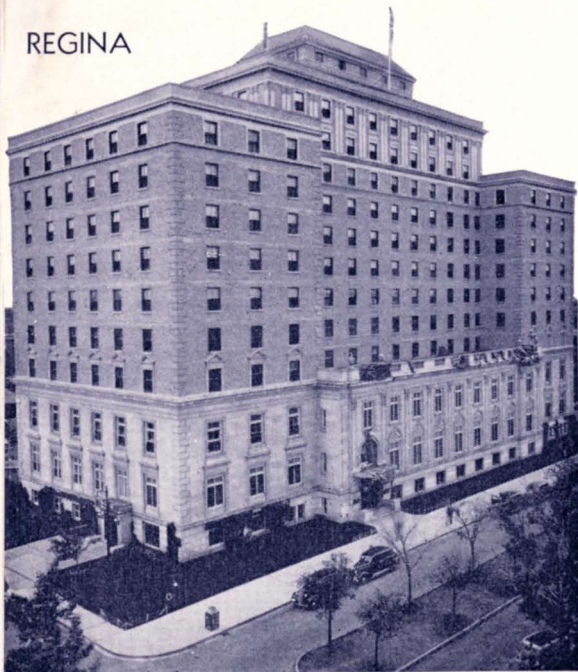
Luncheon: Kiwanis, Tuesday; Rotary, Wednesday; Gyro, Thursday; Executive Association, Friday; Optimist, First Three Thursdays of month.

Dinner: Quota Club, First and Third Tuesday; Optimist, Last Thursday each month.





REGINA



Transfer between hotel and Canadian Pacific Station by taxi ( $\frac{1}{3}$  mile) 50c each way includes hand baggage; checked hand baggage 25c per piece each way; Trunk 50c each way.

REGINA EXHIBITION—August 1 to August 6, 1949 (inclusive)

# *Hotel Saskatchewan*

A. G. E. ROBBINS, Manager

This 268 room brick and limestone hotel overlooks Victoria Park in central Regina. Modern, with equipment and service of Canadian Pacific standards, Hotel Saskatchewan is the social and business centre of the capital of the Province for which it is named. Regina, Queen City of the western plains, is training headquarters of the Royal Canadian Mounted Police.

## DAILY RATES—EUROPEAN PLAN Open All Year

Single with bath—  
\$5.00 to \$7.00

Double with bath—  
7.50 to 9.50

Suites — Single —\$14.50 up  
Double— 17.00 up

Child 7 years of age or under occupying room with two adults—\$1.00 additional to double rate for cot. Over 7 years of age—adult rate.

A la Carte and Table d'Hôte meals, reasonably priced, are served in the Main Dining Room, and, at popular prices in the Coffee Shop.

## MEETING HEADQUARTERS

Rotary, Kiwanis, Monday; Gyro, Thursday; Soroptimist, 1st and 3rd Wednesdays.

Excellent Accommodation for Meetings, Banquets and Conventions.



# Hotel Palliser

CALGARY, ALBERTA

R. M. DEYELL, Manager

Calgary, at the confluence of the Bow and Elbow Rivers, just east of the Canadian Rockies, is a logical break in the journey to or from the Pacific Coast.

The Palliser, 489 room, modern hotel is close to the city's centre. Famed for its annual "Stampede", Calgary serves large irrigated farm areas as well as Canada's cattle country.

## DAILY RATES—EUROPEAN PLAN

Open All Year

Single with bath—  
\$5.00 to \$7.50

Double with bath  
7.50 to 10.00

Suites—Single ..... \$12.50 up  
Double ..... 15.50 up

Child 7 years or under occupying room with two adults—\$1.00 additional to double rate for cot. Over 7 years of age—adult rate.

A la Carte and Table d'Hôte meals are served in the stately main Dining Room. The Coffee Shop, Lobby Floor, is rated Calgary's finest.

## LUNCHEON HEADQUARTERS OF:

Kiwanis, Monday; Rotary, Tuesday; Gyro and Lions, Wednesday; Probus, Thursday.

Close to Canadian Pacific Station. Trunk 50c each way.

CALGARY STAMPEDE—July 11 to 16, 1949



# *Banff Springs Hotel*





# Banff Springs Hotel

BANFF, Alta.

H. C. LYLE, Manager

Heart of the mountains from which it was quarried, Banff Springs Hotel is as luxurious as the baronial castle it resembles. Overlooking Bow Valley in Banff National Park, this 593 room hotel is North America's outstanding resort. Tame "wild" animals in the Park include Buffalo, Elk, Bighorn Sheep.

(Open June 1 to September 11, 1949.)

## DAILY RATES—EUROPEAN PLAN

All Rooms with Bath

Sulphur Mountain View

Single Room.....	\$ 9.00; \$10.00
Double Room.....	12.00; 13.00
Triple Room (3 persons).....	17.25

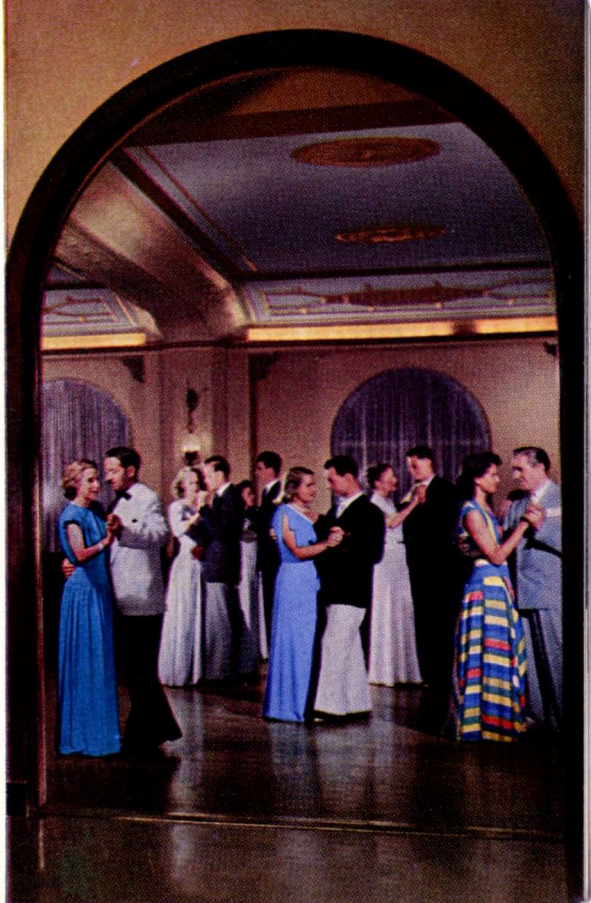
Bow Valley View

Single Room.....	\$11.00; \$13.00
Double Room.....	15.00; 17.00
Triple Room (3 persons).....	21.75

Suites—from \$20.00

Child 7 years or under occupying room with two adults, \$3.00 additional to double rate for cot.

TRANSFER—1½ miles—Between Station and Hotel, 50 cents per person each way. Hand Baggage free; checked baggage 50 cents a piece each way.



## BANFF SPRINGS GOLF COURSE

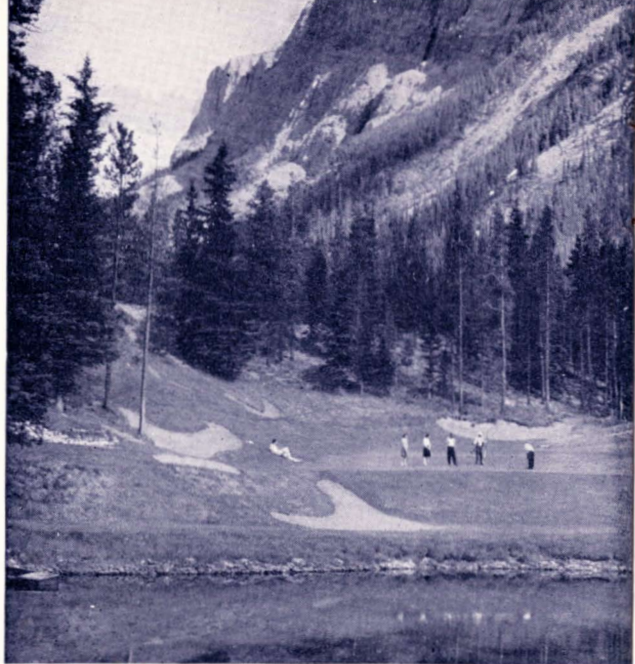
Cradled in the spectacular valley of the Bow River, Banff Springs Golf Course is a challenge to the accomplished golfer—an inspiration to the average player. Stanley Thompson, whose fame is international, laid out the magnificently scenic course. Three sets of tees and the plan of hazards and fairways offer routes of play to match your skill. The clubhouse is complete, comfortable and close to Banff Springs Hotel.

## SPECIAL EVENTS AT BANFF

INDIAN DAYS AT BANFF—July 21 to 24, 1949. A colourful spectacle that brings three to four hundred Stoney Indians to Banff each summer for their tribal sports.

TRAIL RIDERS OF THE CANADIAN ROCKIES—An order that holds an official riding and camping trip each year. Three parties—July 15 to 19, July 22 to 26 and July 15 to 26, 1949.

THE SKY LINE TRAIL HIKERS' CAMP—July 30 to August 3, 1949. Organized with the object of encouraging more extensive use of the trails.



BANFF SCHOOL OF FINE ARTS—July 12 to August 20, 1949. A summer school of music, drama and art.

GOLF, MOUNTAIN CLIMBING, TENNIS,  
BOATING, FISHING AND SWIMMING.

# Chateau Lake Louise

ALBERTA

C. M. RENNIE, Manager

Lake Louise, near the Great Divide of the Canadian Rockies, is one of the world's scenic high-spots. Facing magnificent Victoria Glacier, Chateau Lake Louise—its 386 rooms each with a mountain view—overlooks the lake. Rock gardens and poppy-filled terrace beds deck the sun-drenched, lakeside southern exposure. Canadian Pacific Railway and mountain highways are close by.

(Open June 11 to September 11, 1949.)

## DAILY RATES—EUROPEAN PLAN

All Rooms with Bath  
Pipestone Range View

Single Room.....	\$9.00
Double Room.....	12.00
Triple Room (3 persons).....	17.25

### Lake View

Single Room.....	\$11.00; \$13.00
Double Room.....	15.00; 17.00
Triple Room (3 persons).....	21.75

Suites—from \$25.00

Child 7 years or under occupying room with two adults \$3.00 additional to double rate for cot.

TRANSFER—(3 miles)—Between Station and Hotel, 50 cents per person each way. Hand baggage free; checked baggage 50 cents a piece each way.

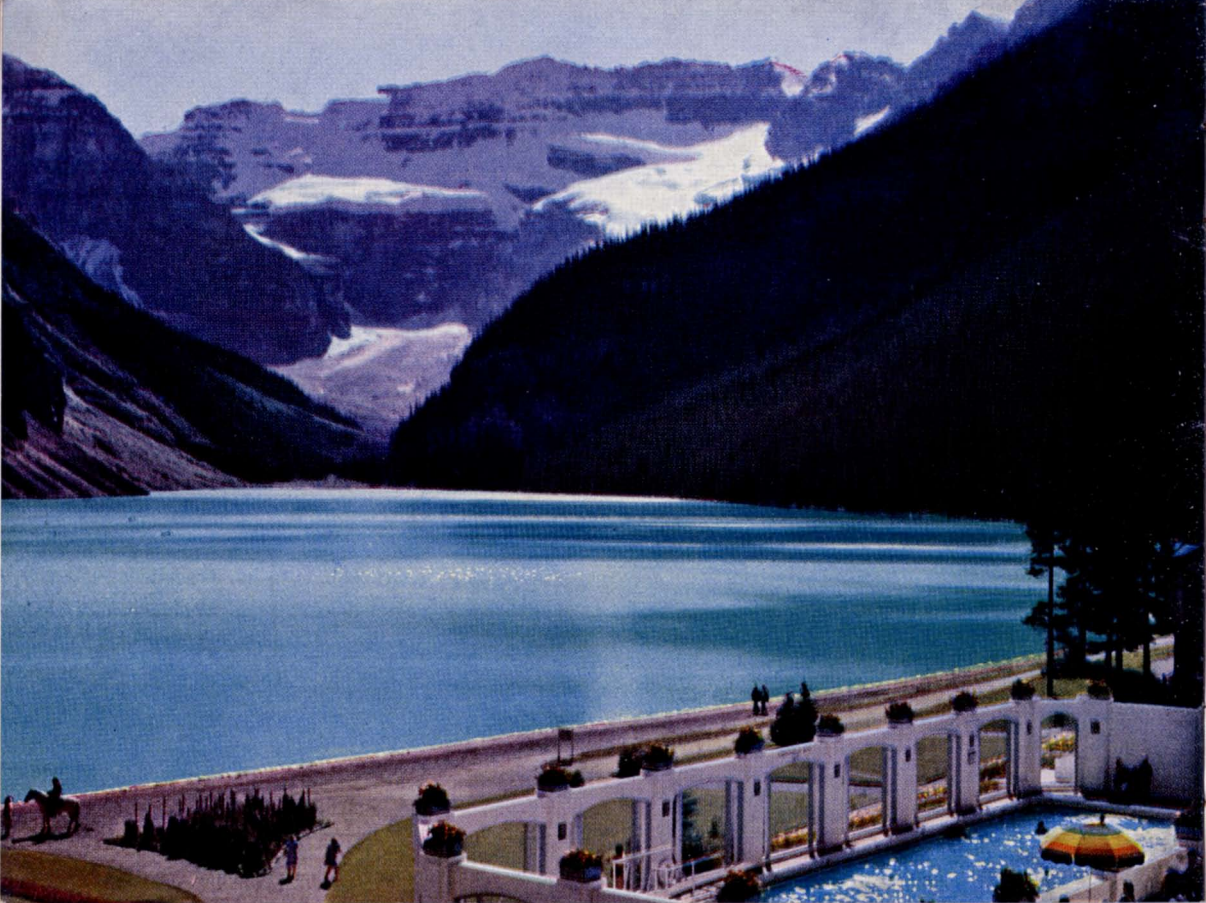
Picture windows in the bright, high-ceilinged dining room of Chateau Lake Louise frame magnificent views of Victoria Glacier, Mount Victoria and the milky jade-like lake from which your friendly, comfortable hotel takes its name.

Between the Chateau and the rim of the lake many-hued Iceland poppies and rock-garden blooms wave in the gentle, scent-spiced mountain breezes.

To fill your days at Lake Louise there are boating, fishing, hiking, riding, dancing and putting green. Well-kept trails lead to nearby glaciers, upland valleys carpeted with wild-flowers, lakes and passes. Sure-footed mountain ponies are tireless and careful. To make your hikes worthwhile or for real mountain climbing Swiss guides are available.

Flanking the terrace there is a glass-enclosed sunny open-air swimming pool for guests of the Chateau. Water is filtered from the glacial lake and warmed to a pleasant temperature.





# Columbia Icefield Chalet\*

Comfortable rooms, tempting meals characterize this chalet, facing the incredible Columbia Icefield, 85 miles north of Lake Louise by spectacular mountain highway.

(Open June 15 to September 15, 1949)

Riding—hiking—climbing—summer skiing  
Garage and service station facilities

RATES—	Glacier View	Mountain View
European Plan	with bath	without bath
Single . . .	\$ 5.50; \$ 7.00	\$ 3.50; \$ 4.50
Double . . .	8.50; 10.00	5.50; 6.50
American Plan		
Single . . .	\$10.00; \$11.50	\$ 8.00; \$ 9.00
Double . . .	17.50; 19.00	14.50; 15.50

Daily motor coach service to and from Lake Louise. Fare from Chateau Lake Louise—  
One way . . . \$7.25; Return . . \$12.50, plus tax.  
Stopover allowed.

## SUNSHINE LODGE:\*

At the edge of Simpson Pass, a motor ride from Banff. Open July 1 to Sept. 30 for riding, climbing, fishing; December 1 to April 30 as a base for hunting—outside the National Park—and winter skiing on miles of timber-free slopes. Return motor fare from Banff \$2.50 per person, plus tax.

\*Owned and operated by Brewster Transport Company, Ltd., Banff, Alta.



## SUNSHINE LODGE RATES

American Plan—per person (two or more to a room)..... Type "A" Type "B"  
\$7.50 \$6.50

Single and Double rooms at slightly higher rates when available.

# Mountain Lodges

Mountain life in all its rugged beauty is offered by attractive, comfortable modern lodges and tea houses in the heart of the Canadian Rockies. Cleverly sited amid secluded trails, woods and lakes of the great mountains, they offer healthful activity, rest, relaxation and informality not far from the Canadian Pacific Railway main line.

## CANADIAN PACIFIC LODGES

(Owned by Canadian Pacific Railway, operated by Lessee)

American Plan—Rates from \$6.50 a day per person—two in a room; \$8.00 single.

Yoho Valley, near Field, B.C. (June 18 to Sept. 8, 1949)	Lake O'Hara, via Hector, B.C. (June 18 to Sept. 8, 1949)
Lake Wapta, Hector, B.C. (June 18 to Sept. 8, 1949)	Moraine Lake, near Lake Louise, Alta. (June 11 to Sept. 11, 1949)

## TEA HOUSES

(Owned by Canadian Pacific Railway, operated by Lessee)

Plain of Six Glaciers—

open June 11 to Sept. 11, 1949

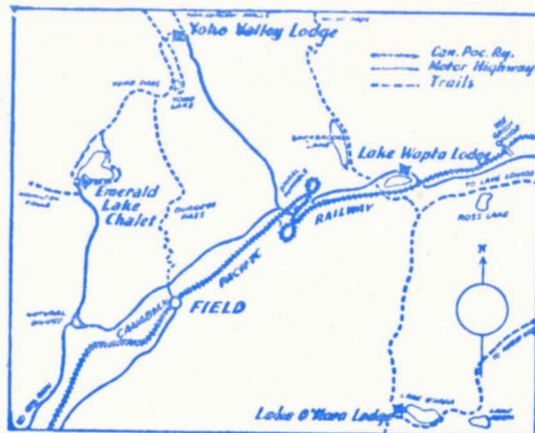
Lake Agnes—open June 11 to Sept. 11, 1949

Twin Falls Chalet—open July 1 to Sept. 1, 1949

Each lodge comprises a central building or chalet with dining room and lounge, surrounded by cottages. Electricity, comfortable beds, stone fireplaces are standard; some cottages have toilets, hot and cold running water, shower baths. Mountain lodges offer nature's solitude when you want it, the companionship of other outdoor folk for hikes, rides, climbs and informal social evenings.

**CUSTOMS:** Baggage from United States points for the Lodges should be checked or shipped by express in bond to Lake Louise Station, Lake Louise, Alta., the nearest Canada Customs Port. The Lodge Management will help arrange prompt customs clearance.

\*Cabins at Radium Hot Springs available without the service of meals—Cooking facilities available or meals may be obtained in nearby cafes.



## OTHER LODGES

Reached by the Canadian Pacific Railway

Mount Assiniboine,  
via Banff, Alta.  
(Owned and operated  
by Erling Strom. Open  
July 1 to Oct. 10,  
1949)

\*Radium Hot Springs,  
Radium Hot Springs,  
B.C. (Owned and  
operated by Miss  
Charlotte Armstrong.  
Open May to Sept.,  
1949)



# *Emerald Lake Chalet* FIELD, B.C.

MRS. E. M. JACKSON,  
Manageress

(Open June 11 to Sept. 11, 1949)

## AMERICAN PLAN

In Yoho National Park, seven miles from Field, B.C., in cool, green depths of forest, Emerald Lake is surrounded by snow-topped mountains . . . a delightful setting for Emerald Lake Chalet and its private cottages—all with hot or cold water. Recreations include boating, riding, hiking, fishing and mountain climbing.

## RATES PER PERSON

### In the Chalet—

Single room and meals, without bath	\$ 8.50
Single room and meals, with bath . .	10.50

### In Cottage—

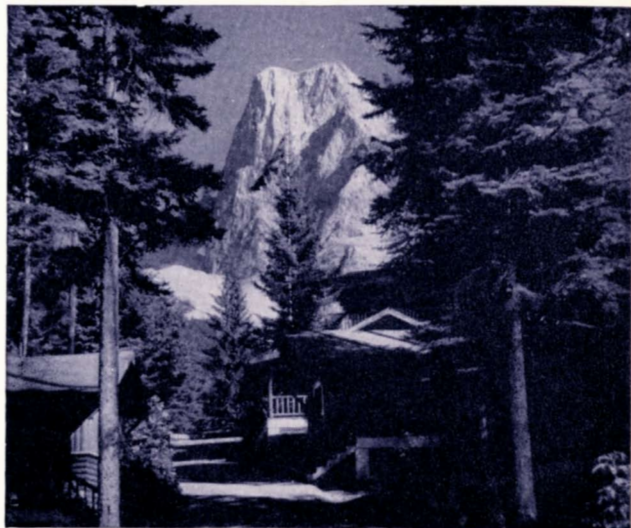
Single room and meals, with bath . .	12.00
Double room and meals, with bath .	9.50
Three persons occupying cottage with 2 bedrooms and connecting bath	10.00
Four persons occupying cottage with 2 bedrooms and connecting bath	9.00

### In Lakefront Cottage—

Single occupancy of twin-bed room and meals, with bath . . . . .	18.00
Double room and meals, with bath .	14.00
Three persons occupying cottage with 2 bedrooms and connecting bath	12.00
Four persons occupying cottage with 2 bedrooms and connecting bath	11.00

Child 7 years of age and under, half rate.

Over 7 years of age, adult rate.



Owing to limited capacity, large special parties cannot be accommodated and reservations for smaller parties must be confirmed before sale.  
Transfer . . . . . 7 miles  
Between Field station and Chalet, \$1.00 plus tax per person each way.  
Hand baggage free; checked baggage \$1.00 a piece each way.

CUSTOMS: Baggage from United States points for Emerald Lake Chalet should be checked or shipped by express in bond to Lake Louise Station, Lake Louise, Alta., the nearest Canada Customs Port. The Chalet Management will help arrange prompt customs clearance.

# HOTEL VANCOUVER

Vancouver, British Columbia.

M. H. BURNS  
Manager

(Operated by the Vancouver Hotel Company, Ltd., on behalf of the Canadian Pacific and Canadian National Railway Companies.)

This modern 560 room hotel on Georgia Street dominates the business, shopping, financial and theatrical districts of Canada's gateway to the Orient. It is only four blocks from the Canadian Pacific Railway station and the steamship piers.

## DAILY RATES—EUROPEAN PLAN

Open All Year

Single.....	\$ 5.00 to \$9.00
Double.....	7.50 to 12.00
Suites.....	\$16.00 a day up

All rooms have combination tub and shower baths.

Commercial Sample Rooms—combination and straight—modern in lighting and equipment. A la Carte and Table d'Hôte meals in the Main Dining Room. Low priced, air-conditioned Cafeteria. Dinner dance, 7 to 10 p.m., every Wednesday. Supper dance, Fridays and Saturdays—on the Panorama Roof.



MEETING HEADQUARTERS—Gyro, Mondays; Rotary, Tuesdays; Kiwanis, Thursdays; Electric Club, Fridays; Board of Trade, Canadian Club, as announced.

VICTORIA, B.C.

# *The Empress Hotel*

J. K. HODGES  
Manager

This charming 573-room hotel graces a beautiful garden facing the placid waters of Victoria's Inner Harbour. Victoria itself, capital of British Columbia, is famous for its parks and flowers. Other attractions are the Government buildings, Museum, Dominion Astrophysical Observatory, and gardens noted for their colourful beauty at all seasons. An equable climate enables one to enjoy hunting in season, golf, tennis, riding, and fishing in nearby waters, the year round.

## DAILY RATES (European Plan—Open All Year)

	May 15th to Oct. 14th	Other Months
Harbour, Garden or Street View,		
Single.....	\$7.00 to \$10.50	\$6.00 to \$9.50
Double.....	10.50 to 15.00	8.50 to 13.00
Open Court Rooms, Single.....	\$6.00 up	\$5.00 up
Double.....	9.50 up	7.50 up
Suites.....	\$15.00 up	\$13.00 up

Child 7 years or under occupying room with two adults, \$1.00 additional to double rate for cot.  
Over 7 years of age—Adult rate.

MEALS—A la Carte, also Table d'Hote and combination meals at low, popular city prices.

LUNCHEON HEADQUARTERS—Gyro, Monday; Kiwanis, Tuesday; Rotary, Thursday; Lions and Capital City Commercial Club, Friday; Kinsmen Dinner every 2nd Thursday.

## FLOWER GARDENS OF VICTORIA

Reminiscent of Old England, Victoria is lovely and enchanting. Its profusion of colourful blooms lends a delicate beauty to this land of flowering gardens—Empress Hotel Rock and Rose Gardens—Butchart's Gardens—beautiful parks. This city has rare old-world charm and an atmosphere of quiet repose.



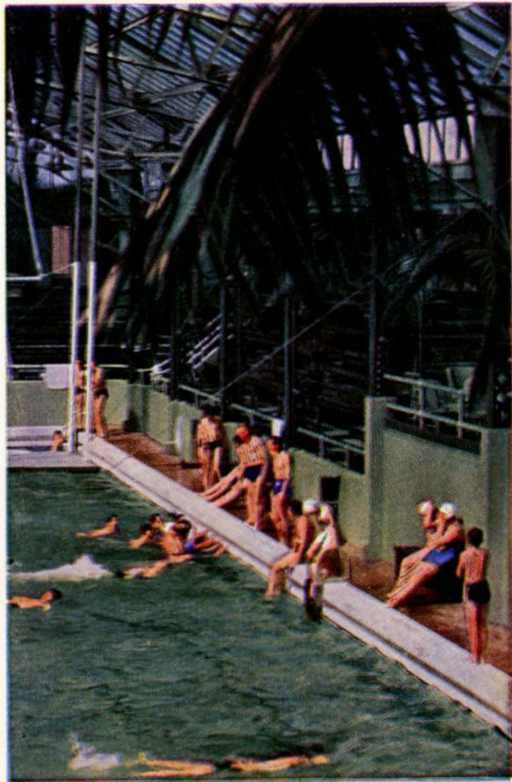


# Canada's Evergreen Playground

Vancouver Island's lovely winter playground combines minimum rainfall with maximum sunshine. Year-round golf on seaside links and lawn tennis call you to Victoria. The Crystal Garden—one of world's largest enclosed sea-water swimming pools—for Turkish, steam, hot sea-water baths, Swedish and electric massage—adjoins the Empress Rose Garden.

Year-end Festivities.—The Empress hotel has long been noted for its celebration of Christmas—carols, the Boar's Head, the Yule Log—when guests join in revels conducted with all the traditional frolic of Old England.

TRANSFER—Between hotel and Canadian Pacific, B.C.C.S. docks ( $\frac{1}{4}$  mile); hotel and ocean docks ( $1\frac{1}{2}$  miles). Trunks 50c each way; hand baggage 25c each piece, maximum charge, \$1.00 for 4 or more pieces.



The Crystal Garden pool

Victoria Spring Garden Festival, May 4th to 7th, 1949.



# *Canadian Pacific Hotels*

