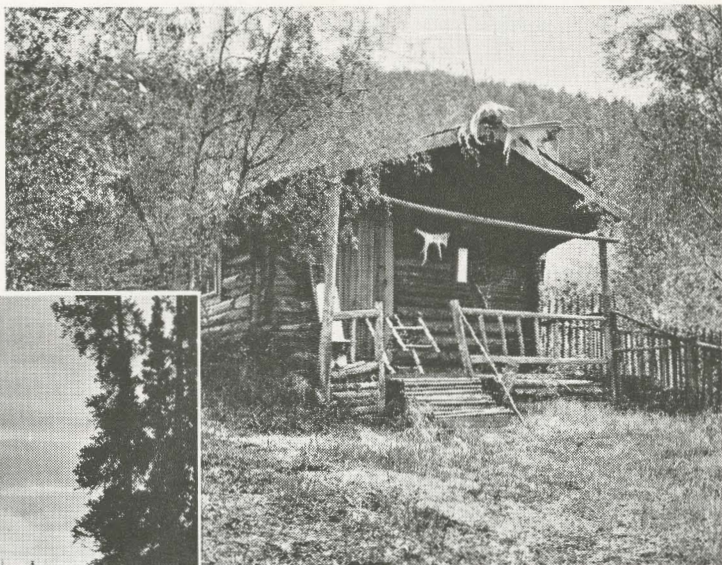
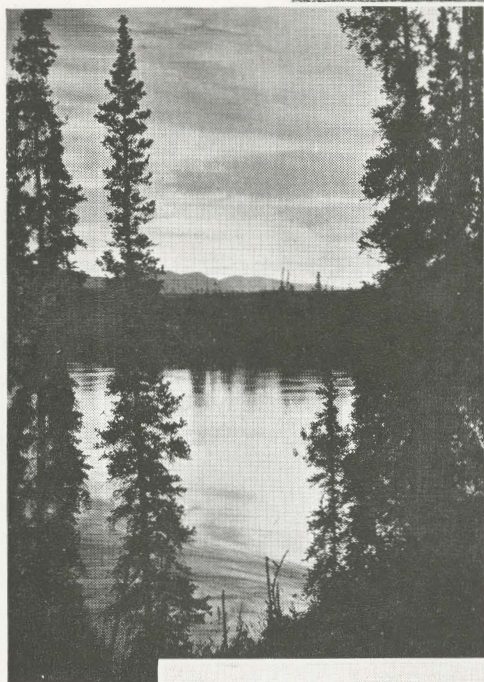




LAKE LOUISE



Above: "A shrine". Cabin of Robert W. Service, Dawson.

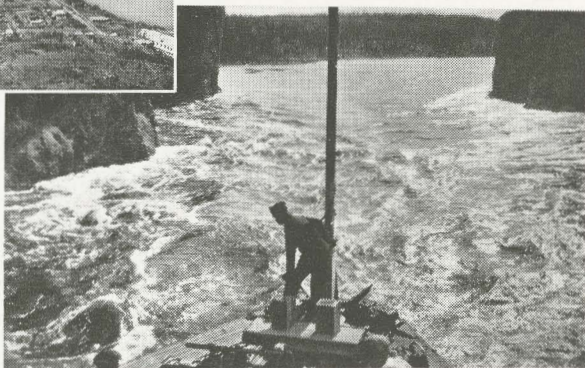


On the peaceful Yukon river at sunset.

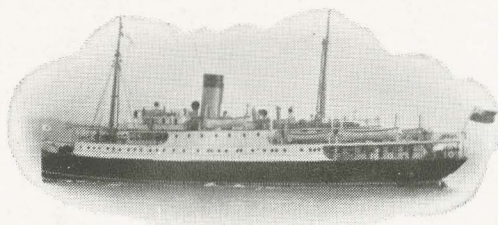
The storied center of the gold country: city of Dawson.



Below: Fighting the current of the mighty Yukon at Five Finger Rapids.



Canadian Pacific Railway's Alaska Service



DINNER

APPLE, TOMATO OR PINEAPPLE JUICE

ANCHOVY EGG

SUGAR BEETS CHEESE STRAWS

SHRIMP COCKTAIL

CELERY EN BRANCHE

QUEEN OLIVES

CREAM OF CORN

CONSOMME JARDINIERE

BOILED CODFISH, EGG SAUCE

GRILLED BRITISH COLUMBIA SALMON, LEMON BUTTER

COMBINATION SALAD

BOILED CORN BEEF WITH CABBAGE

SAVORY OMELETTE

ROAST PORK, APPLE SAUCE

ROAST PRIME RIBS OF BEEF, YORKSHIRE PUDDING

ROAST CHICKEN WITH DRESSING

BROWNEED, BOILED OR MASHED POTATOES

VEGETABLES IN SEASON

STEAMED RAISIN PUDDING, SWEET SAUCE

PUMPKIN PIE, WHIPPED CREAM

WINE JELLY

COMPOTE OF FRUIT

VANILLA ICE CREAM

ASSORTED CAKE

SCOTCH SHORTBREAD

IMPERIAL CHEESE

TOASTED CRACKERS

FRESH FRUIT

TEA

COFFEE
(Hot or Iced)

COCOA

MILK



LAKE LOUISE

Less than twenty-four hours from the salty pine-laden breezes of the Pacific Coast lie the Canadian Rockies. Pierced by transcontinental line of the Canadian Pacific Railway, the great mountain barrier is famous for the scenic grandeur of peaks, glaciers and lakes. Most famous scenic gem is jade-green Lake Louise. Fed by Victoria Glacier, this mountain lake is the site of Chateau Lake Louise, whose guests swim in warmed glacial waters of the open-air pool, or ride sturdy mountain ponies on the many woodland trails that radiate from the luxurious hotel.