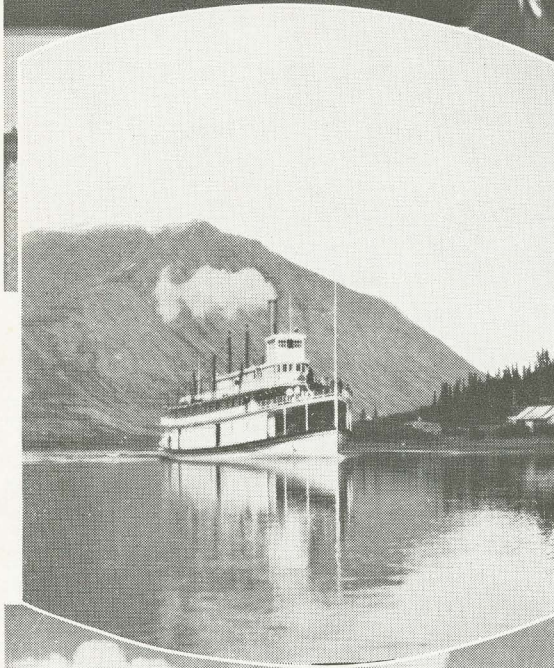




MOUNT EISENHOWER



*View from Lake Steamer
Enroute to West Taku Arm*

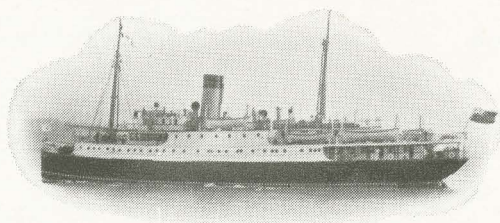


*Lake Steamer
Tutshi*

Reflections in West Taku Arm



Canadian Pacific Railway's Alaska Service



DINNER

PINEAPPLE, TOMATO OR ORANGE JUICE

FRUIT COCKTAIL

SARDINES PARMESAN

CHEESE STRAWS

OX TAIL SOUP

CLEAR CONSOMME

BOILED SPRING SALMON, WHITE SAUCE

BROILED FINNAN HADDIE, DRAWN BUTTER

SLICED TOMATOES

BAKED YORK HAM, RAISIN SAUCE

BOILED OX TONGUE, CAPER SAUCE

ROAST SIRLOIN OF BEEF, BROWN POTATO

ROAST YOUNG TURKEY, CRANBERRY JELLY

BOILED, BROWNEED OR MASHED POTATOES

VEGETABLES IN SEASON

DATE PUDDING, FRUIT SAUCE

DEEP FRUIT PIE

SLICED PEACHES AND CREAM

NEAPOLITAN ICE CREAM

ASSORTED CAKE

SCOTCH SHORTBREAD

GORGONZOLA OR CANADIAN CREAM CHEESE

TOASTED CRACKERS

FRESH FRUIT

TEA

COFFEE
(Hot or Iced)

COCOA

MILK



MOUNT EISENHOWER

North of the Canadian Pacific transcontinental railway line, between Banff and Lake Louise, this mighty mountain has stood like a medieval fortress longer than Indian legends can remember. For many years, because of its likeness to a sturdy fortress, it was known as Castle Mountain. Now, as an enduring tribute to the Supreme Commander of the Allies, the Canadian Government has re-named the eight-mile - long mountain "Mount Eisenhower."