



BANFF & THE BOW RIVER VALLEY

BANFF SPRINGS
HOTEL

CANADIAN PACIFIC

LUNCHEON

TABLE d'HOTE



Chilled Grapefruit or Tomato Juice
Radishes and Spring Onions
Chilled Melon

Canadian Pea Soup Habitant
Consomme in Cup

Fried Filet of Sole, Tartar Sauce
Minced Bacon Omelette
Braised Western Beef a la Mode
Home Made Shepherds Pie with Mushrooms,
Potato Crust
Banff Spring Fruit Plate with Rocky Mountain Cheese
Cold Cuts with Potato Salad and Mixed Pickles

Buttered Green Beans
Boiled Swiss Chard
Potatoes Persilles, Mashed or Boiled

Peach Pie Pineapple Pudding Coupe Empress

Half Grapefruit Preserved Pineapple
Bananas in Cream Compote of Prunes

Camembert Ingersoll Ermite Roquefort Trappist

Tea Coffee Buttermilk Milk

Rolls \$1 75

Announcements

DINNER MUSIC

Foyer, Alhambra Dining Room and
Fairholme Dining Room from
7.30 p.m. to 8.30 p.m.

EVENING MUSICALE

in the Mount Stephen Hall at 9.00
o'clock, Miss Genevieve Carey and
her trio

DANCING

in the Ballroom, 10 to 12 midnight
(excepting Sunday) featuring
Moxie Whitney and His Orchestra

THE TAVERN

is situated on the Terrace floor.
Hours 10a.m. to 9p.m.

For Your Entertainment

Golfing

Riding

Motoring

Hiking

Fishing

Swimming

Sun-Bathing

Tennis

Climbing

Boating

Government
Reg

REQU

MEAT be
tiredly fro
each Tues

SUGAR b
on request
follows: N
spoon for
and not m
spoon for

Therefor
are based
ed. In two
er guests
surrend
their food
These bo
left with
Clerk.

The Alha

R

is open

Breakfast

Luncheon

Dinner

Fairhol

R

Breakfast

Luncheon

Dinner

Room Serv

from 7.30

ni

An Additional Charge of 5c per Portion is Made for Service in Rooms

LUNCHEON



STAR (★) INDICATES READY TO SERVE

HORS D'OEUVRES

Iced Celery 30 Radishes 25 Queen or Stuffed Olives 35 Fruit Cocktail 50 Green Onions 25
Mixed Pickles 30 Sliced Smoked Salmon 65 Crabmeat Cocktail 65 Tomato Juice 25
Anchovies Canape 60 Fresh Domestic Caviar 1.00 Celery and Olives 35 Antipasto 65

SOUP

★Canadian Pea Soup Habitant 25 Consomme in Cup 25

FISH

★Fried Filet of Sole Tartar Sauce 80

ENTREES

★Minced Bacon Omelette 75 ★Braised Western Beef a la Mode 90
Home Made Shepherds Pie with Mushrooms, Potatoe Crust 80

Banff Springs Special

Fresh Prince Rupert Cracked Crab Mayonnaise

Garnished with Egg and Tomato, Mixed Salad

\$2.50

COLD SELECTIONS

Banff Springs Fruit Plate with Rocky Mountain Cheese 80
Cold Assorted Cuts with Mixed Pickles and Potato Salad 1.10

VEGETABLES

★Buttered Beans 25 ★Boiled Swiss Chard 25
★Potatoes Persilles, Boiled or Mashed 25

SANDWICHES

Chicken 50 Lettuce and Tomato 40 Club 60c

SALADS

Chicken 1.00 Lettuce and Tomato 45 Fruit 65

SWEETS

★Peach Pie 25 ★Pineapple Pudding 25 ★Coupe Empress 25
Cup Custard 25 Fruit Jelly 25 Fruit Tartlet 25

Parfait Creme de Menthe 45 Fruit Sundae 40

ICE CREAM; Vanilla, Maple Walnut, Strawberry, Tutti Frutti 30

FRUITS (in season)

Banana 15 Orange or Raw Apple 15 Compote of Stewed Fresh Fruit 35
Half Grapefruit 30

CHEESE

Camembert 30 Ingersoll Ermitte 30 Roquefort 40 Trappist 25

TEA, COFFEE, MILK, ETC.

Tea or Coffee 25 Demi Tasse 15; with Cream 20 Postum 25
Individual Bottle Milk 15 Buttermilk 15 Malted Milk 25 Bread 15 Toast 20

Portions are prepared for one person only

BANFF SPRINGS HOTEL ~ IN BANFF NATIONAL PARK

Wednesday, June 25th, 1947

ent Rationing
ulations

IRE THAT:

eliminated en-
m all menus
day and Friday.

be served only
and then as
ot more than 1
any beverage,
ore than 1 tea-
any cereal.

our portions
on quota allow-
weeks or long-
ore required to
er temporarily
ration books.
ks should be
the Reception

mbra Dining
oom

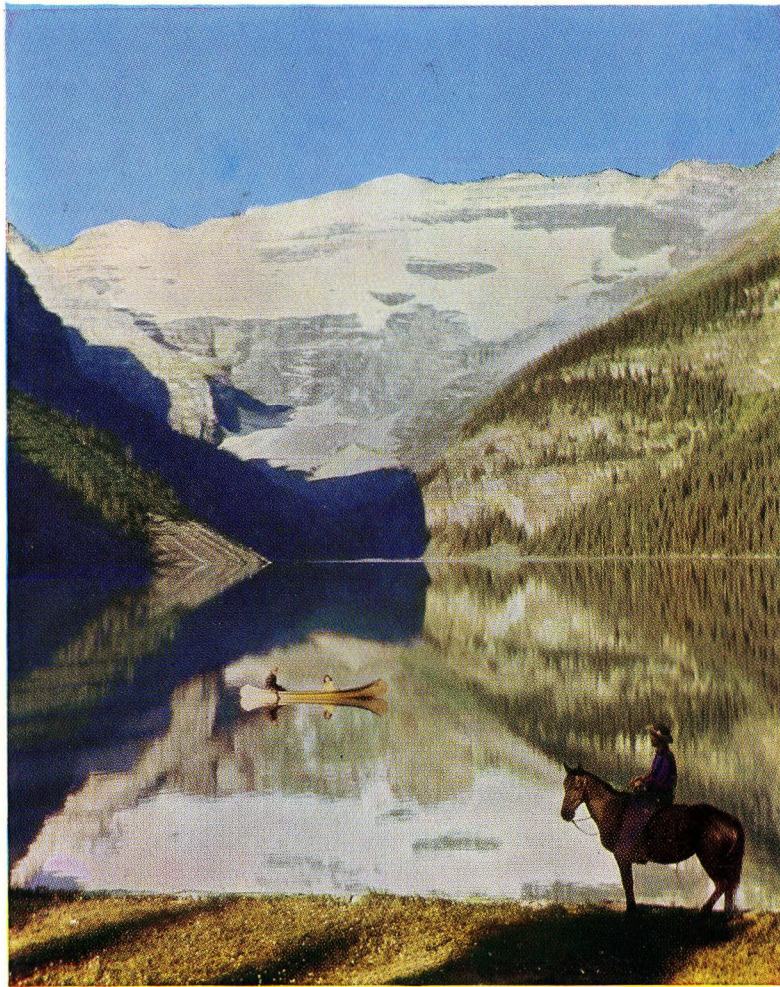
as follows:

8.00 to 10.30
12.30 to 2.30
6.30 to 9.00

me Dining
oom

7.30 to 10.00
12.00 to 2.00
6.00 to 8.30

ice is available
a.m. to mid-
ght



LAKE LOUISE AS SEEN FROM THE CHATEAU

Your Host Across Canada
CANADIAN PACIFIC HOTELS

Hotels of Beauty and Efficiency - - - Noted for Comfort,
 Service and Cuisine at Moderate Rates

†THE DIGBY PINES	Digby, N.S.
†LAKESIDE INN	Yarmouth, N.S.
CORNWALLIS INN	Kentville, N.S.
†THE ALGONQUIN	St. Andrews-by-the Sea, N.B.
MCADAM HOTEL	McAdam, N.B.
CHATEAU FRONTENAC	Quebec, Que.
ROYAL YORK HOTEL	Toronto, Ont.
†DEVIL'S GAP LODGE	Kenora, Ont.
ROYAL ALEXANDRA HOTEL	Winnipeg, Man.
HOTEL SASKATCHEWAN	Regina, Sask.
HOTEL PALLISER	Calgary, Alta.
†BANFF SPRINGS HOTEL	Banff, Alta.
†CHATEAU LAKE LOUISE	Lake Louise, Alta.
†EMERALD LAKE CHALET	Field, B.C.
EMPRESS HOTEL	Victoria, B.C.

HOTEL VANCOUVER Vancouver, B.C.

[Operated by the Vancouver Hotel Co. Limited on behalf of the Canadian Pacific Railway Company and the Canadian National Railways.]

†These hotels are open in the Summer only.

