

Canadian Rockies

and the PACIFIC COAST



BANFF SPRINGS HOTEL IN BANFF NATIONAL PARK

Canadian Pacific

WORLD'S GREATEST TRAVEL SYSTEM



The **HIGH SPOT** *of your travels*

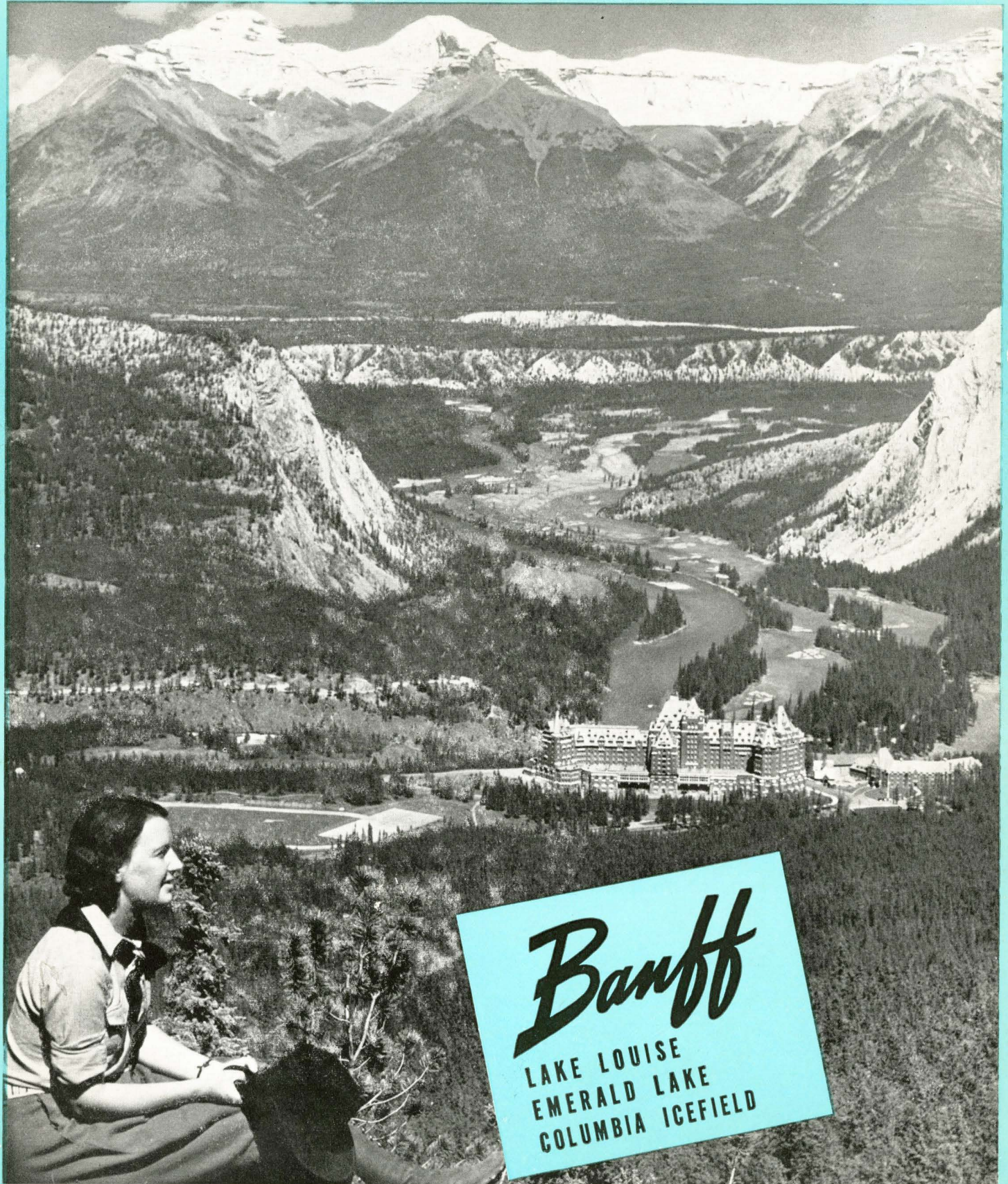
The "shining mountains" the Indians called them—the "backbone of North America" say the geographers—"ice cream mountains!" exclaimed the little boy who first saw them lifting out of the plains eighty miles away when he raised the window blind as his Canadian Pacific train neared the Canadian Rockies in the early morning. They are all of these and much more—these great Canadian Rockies that fling their rugged ramparts so majestically into the blue skies, reaching for the fluffy white clouds that float like galleons in from the Pacific. Here rock is piled on rock to heights that soar, snow-crowned in the pure upper air. Here is immensity that thrills the imagination. And here is a playground to which travel-wise tourists come from all parts of the world.

Whether your approach to Banff and Lake Louise be from the East or from the Pacific Coast, these Alpine resorts in the Canadian Rockies come as a fitting climax to scenery which is a succession of thrills. No sooner does your train enter the Gap than you are flanked by lofty cliffs pierced by passes through which you get glimpses of hanging glaciers on the ridges behind. West of the spectacular Three Sisters, you enter the wild game preserve of Buffalo Park, and detrain for the Banff Springs Hotel, which towers like a Scottish baronial castle above the falls of the Bow River. Banff itself lies in an amphitheatre of mountains, which have drawn so many hundred thousand visitors that facilities are now provided for every kind of sport or relaxation—golf, swimming, riding, tennis, fishing, climbing or hiking, not to mention the indoor sports associated with a lilting dance orchestra. The very air is electric, and you want to do things.

Lake Louise is forty miles nearer the Great Divide, and a thousand feet higher above sea-level. With a glacier at its front door, reflected in one of the loveliest of Alpine lakes, and with its rock gardens and borders of Iceland poppies, the Chateau Lake Louise seems almost to have been dropped into fairyland. Here too are the amenities of a popular mountain resort—swimming pool, ponies for riding, canoes for fishing, tennis courts, Swiss guides for the Alpine climber, trails for the hiker—and a dance orchestra. A motor trip remarkable for its Alpine beauty can now be made over the Columbia Icefield Highway, north from Lake Louise to the spectacular Columbia Icefield . . . official opening July 1st. The route through this unsurpassed mountain country is flanked all the way by mighty glaciers, and adds another charming trip to the impressive list of motor drives available from Lake Louise. Both Banff and Lake Louise are outfitting points for trail-riding and camping trips.

The approach from the Pacific Coast is by way of the Fraser Canyon and the deep gorges of Eagle Pass, Rogers Pass and the Kicking Horse Pass—nearly four hundred miles of superb mountain scenery. As an engineering feat, this section of the Canadian Pacific Railway is one of the wonders of the world. You have to see it to believe it. Ravines breaking through the northern wall of the Kicking Horse Pass provide access to two fascinating summer resorts, Emerald Lake and the Yoho Valley, a paradise of waterfalls. Just before one reaches the Great Divide is Lake Wapta with its Lodge, eight miles by pony trail from Lake O'Hara, one of the most exquisitely beautiful spots in this Alpine domain. Lake Louise is just about ten miles farther East as the crow flies. In a word, the cream of the Canadian Rockies is concentrated in an area of about sixty miles located adjacent to the rails of the Canadian Pacific.

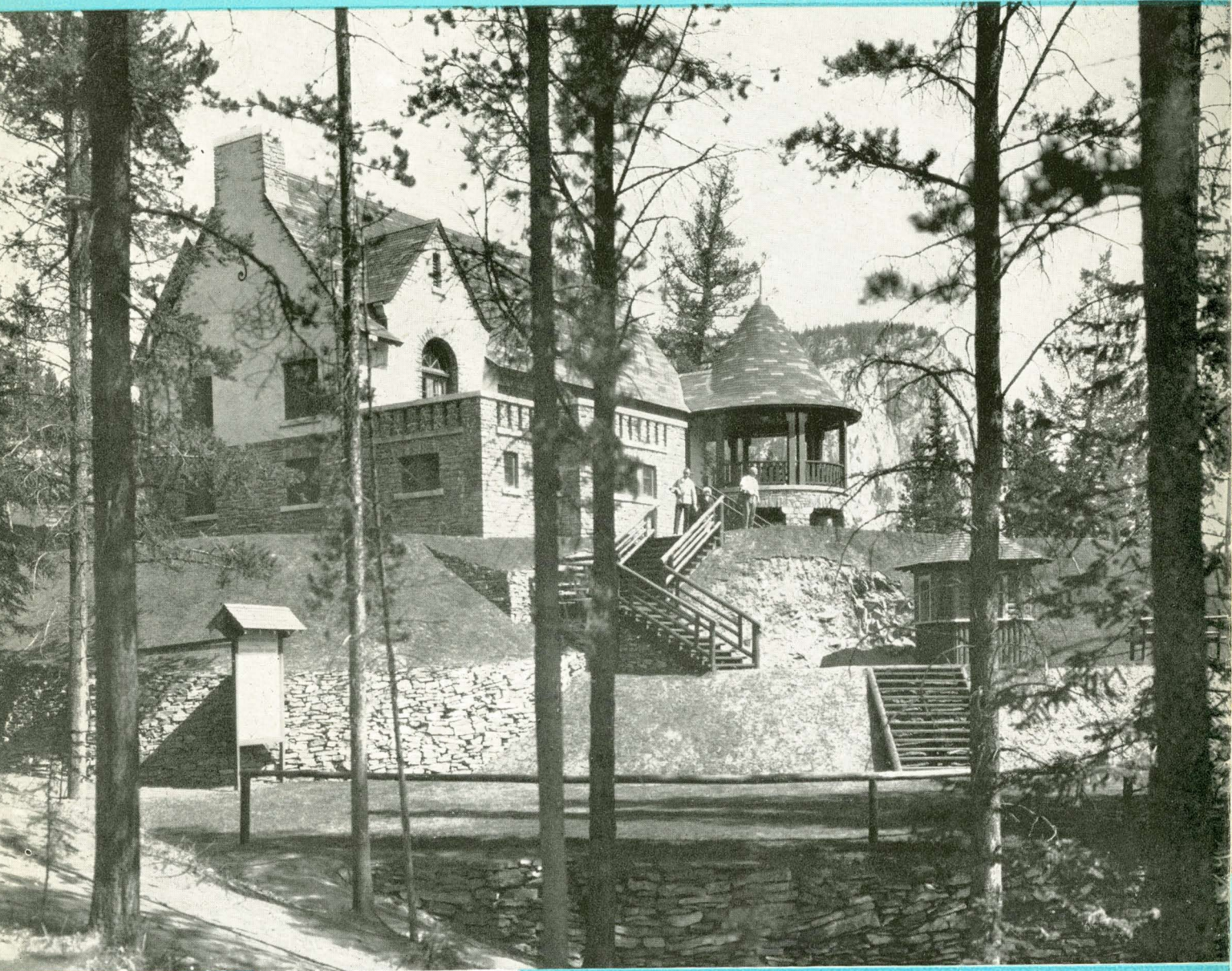
**THE SMART SUMMERING PLACE FOR
WORLD TRAVELLERS... *Canadian Rockies***



Thrill to the mile-high mountain majesty of Banff and Yoho National Parks. Whether your time is two weeks or two months, you can have the vacation of a lifetime here in the Canadian Rockies... in a romanceland that's utterly different and thoroughly Alpine in character. Towering mountain ranges, verdant spruce forests, jewel-like lakes and rivers. You live on the crest of the continent with all the outdoor sports and civilized comforts for a **perfect** vacation.

**VARIETY IS THE SPICE OF LIFE
EVERY DAY OF YOUR STAY AT**

Banff



BANFF SPRINGS GOLF CLUB HOUSE

More than ever, travel-wise tourists will summer this year at Banff. For here, in a majestic setting, is all that the smart travelling world desires. At Banff Springs Hotel . . . cosmopolitan gaiety . . . delightful atmosphere . . . brilliant terraces, spacious guest rooms and public rooms, dance and concert orchestras . . . and famous Canadian Pacific cuisine! In Alpine grandeur . . . golf at its best, mountain climbing, trail riding, hiking, motor trips . . . thrilling fishing . . . swimming in cool and warm water pools. This summer enjoy congenial companionship and a happy holiday at Banff Springs Hotel in Banff National Park.



Dance to your heart's content . . .
to the rhythmic strains of a famous orchestra.



SWIM UNDER THE SUN IN COOL OR WARM SULPHUR WATER POOLS....

**CANADA
WELCOMES U.S.
CITIZENS...NO
PASSPORTS**



TENNIS ON FAST COURTS

Banff Springs Hotel is a city in itself—set amidst nature's everlasting mountain skyscrapers. Its colorful pool and lovely terrace are just outside your door—with the glorious Bow Valley stretching out before your eyes. In everything Banff is "top of the world"—in vivid beauty, comfort and gaiety, in bracing atmosphere, in opportunity for outdoor exercise, in life which may be either serene or gay according to your tastes.

**WHATEVER YOUR WHIM OR FANCY...YOU'LL
HAVE THE TIME OF YOUR LIFE AT . . .**

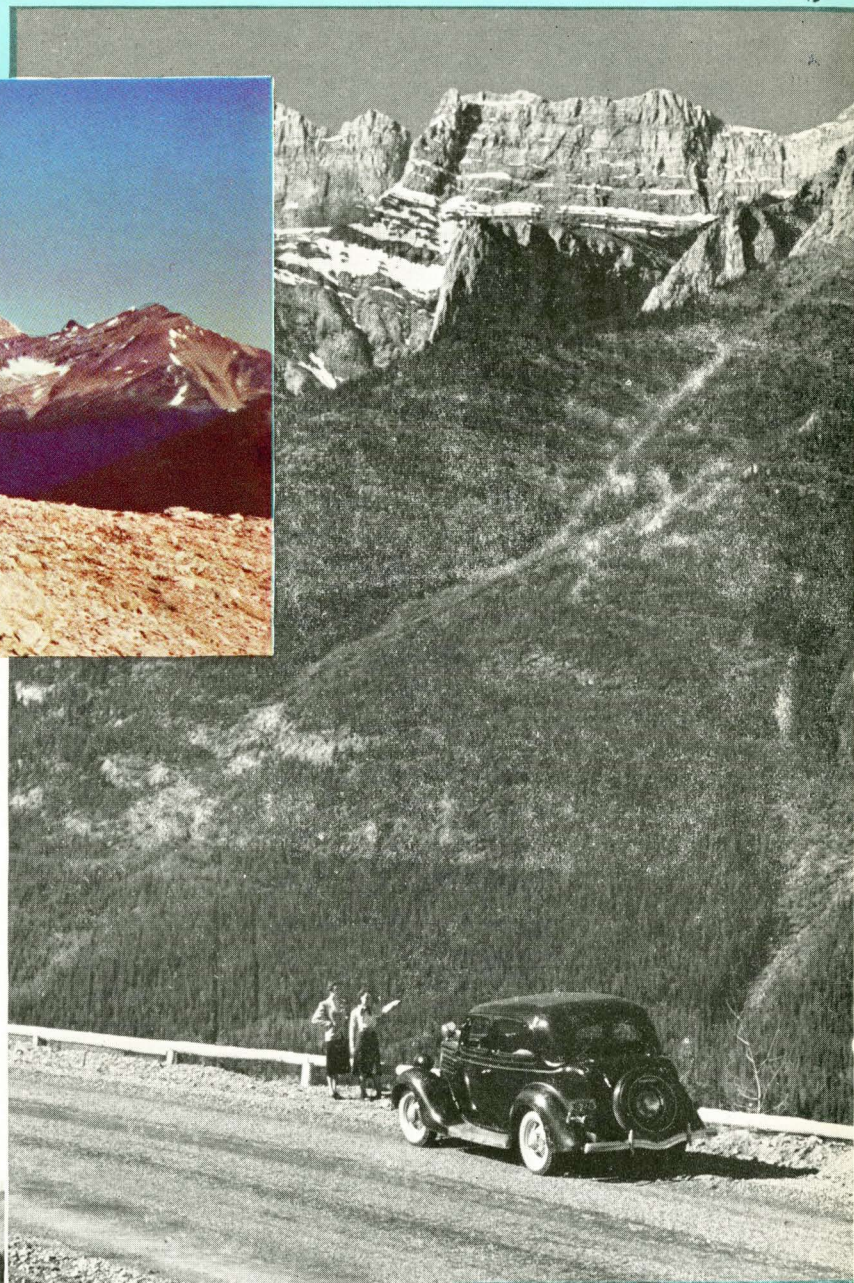
Banff



Never have you seen more brilliant color film subjects. Snow-topped peaks and hanging glaciers reflected in lakes of jewel-like colors. Vivid mountain flowers! Western events—Indian Days at Banff with tribal rituals and barbaric hues—open-air swimming pools. Red-coated mounties—cowboys. And the Alpine lighting helps you to catch faithfully the fascinating colors. So bring your camera to the Canadian Rockies. A fresh supply of color film and necessary accessories are available at Canadian Pacific hotels at Banff and Lake Louise.

[4]

TRAIL RIDERS AT THE SPRAY RIVER



ALPINE MOTORING NEAR BANFF

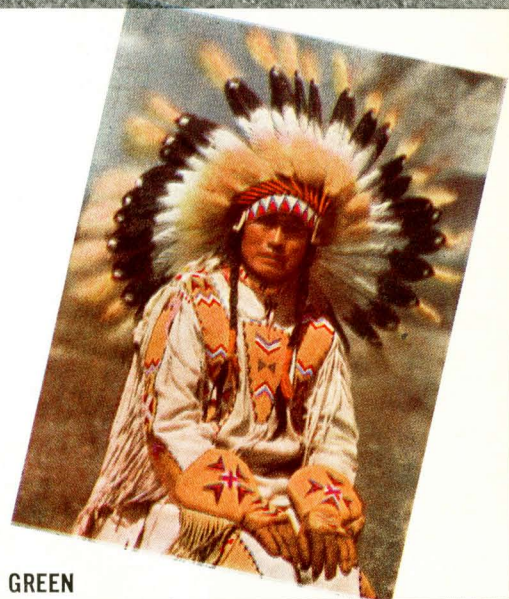
Play golf on a unique mile-high course — surrounded by snow-capped peaks and fragrant spruce forests. Each hole a thrill. Three sets of tees to make it easy for you to play your own kind of game. Greens are smooth—and hazards so sporting that they're a challenge to your skill.



**THE PRIMITIVE, COLORFUL PAST LIVES
AGAIN TO THE BEAT OF THE TOM-TOM DURING**

Hear the beat of the tom tom — thrill to the primitive tribal rites of redskin braves during Indian Days at Banff, July 18 to 21. See the Wild West on parade in cowboy competitions during the famous Calgary Stampede, July 8 to 13, near Banff.

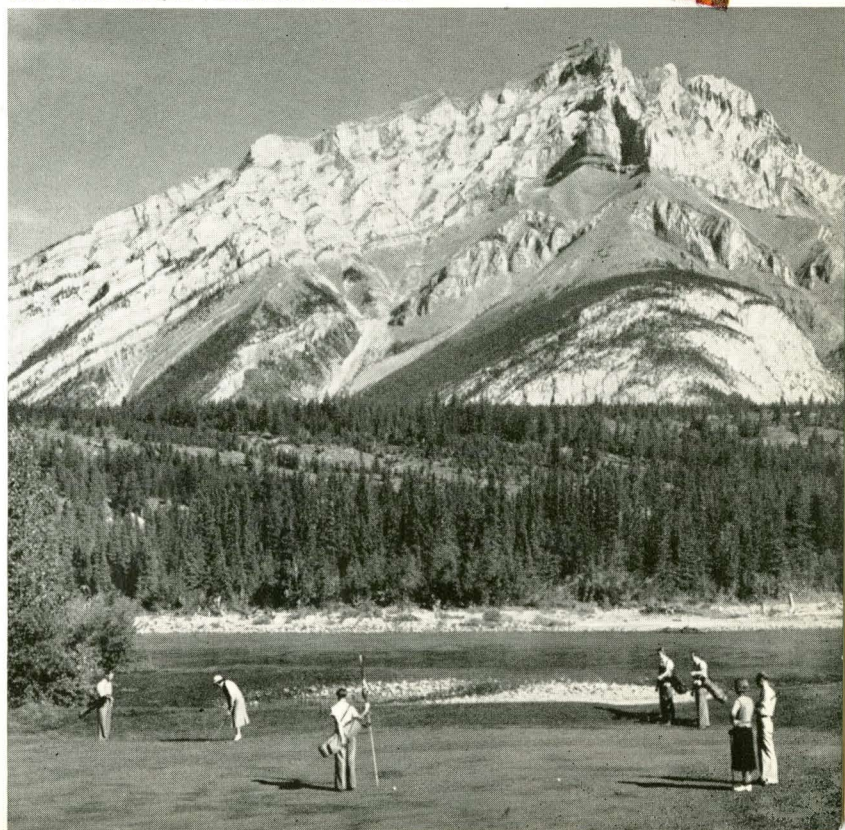
*Indian
Days*
**AT
BANFF**



THE PICTURESQUE FOURTEENTH GREEN

Banff
**COLF
WEEK**

One of Canada's major sporting events, August 18 to 24, 1940. Open to any member of a recognized golf club. A brilliant tournament week—competing for the Edward, Prince of Wales Cup, the Willingdon Trophy, Associated Screen News and Brewster cups. And this year, two new trophies—the Banff Springs Trophy and the Lake Louise Trophy for scratch play. Open to registered guests of Banff Springs Hotel.



Name Your Sport...

IT'S FUN IN MORE WAYS THAN ONE



Mile-High Fishing ... FINNY MOUNTAIN FIGHTERS LURK IN THE BEAUTIFULLY BLUE SPRAY RIVER IN SIGHT OF YOUR HOTEL

The world is literally at your feet... at Banff. A glorious setting for rest and play... splashed with Alpine sunshine, spiced with invigorating mountain air. You'll play a keener game of tennis on the fast clay courts. *All* your everyday sports... golf, swimming, dancing and just relaxing reach a new peak of pleasure here on top of the world. Colorful western events!

AT REGAL

Banff

A castle of comforts is Banff Springs Hotel..600 spacious rooms, the majority with private bath..38 period suites..2 public dining rooms..Alhambra and Fairholme..regal ballroom and lounges.



Your Tennis will improve in this
Alpine Air

WHAT TO DO AT Banff

- ★ DANCING
- ★ GOLF
- ★ BANFF GOLF WEEK
- ★ SWIMMING
- ★ PHOTOGRAPHY
- ★ REST IN THE SUN
- ★ TRAIL RIDING
- ★ FISHING
- ★ BOATING—CANOEING
- ★ TENNIS
- ★ CALGARY STAMPEDE
- ★ INDIAN DAYS
- ★ ALPINE CLIMBING
- ★ HIKING
- ★ MOTOR TRIPS



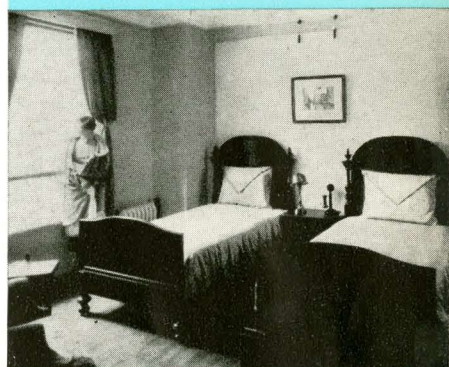
WIDE-WINDOWED, COLORFUL SITTING ROOMS

SUITES

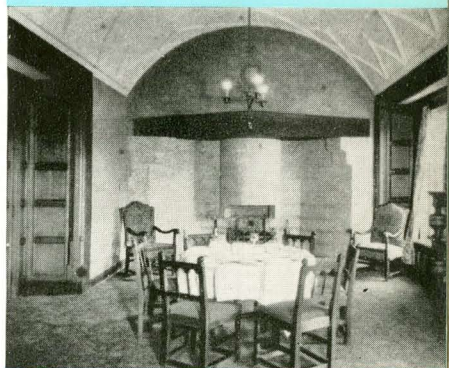
That Blend Exquisite
Taste with Solid Comfort



... EVERY TASTE ...



... EVERY COMFORT ...



... DESIGNED FOR



GRACIOUS LIVING ...

**AN AZURE GEM RINGED BY MIGHTY
MOUNTAINS AND SPARKLING GLACIERS**

Lake Louise



The charming Chateau Lake Louise overlooks this lake amongst the clouds. Brilliant poppies and mountain flowers bloom in its terraced gardens, and massive peaks and the gleaming Victoria Glacier are mirrored in its blue depths. Here is the happy hunting ground for color movies and color photos. Blazing sunsets, purple peaks and cool green forests—the glittering slopes of glaciers against a sky of intense blue. Right before your eyes is a panorama of snowy heights—Mount Victoria, Mount Lefroy, Mount Aberdeen. Easy trails beckon you to adventure . . . to the Lakes in the Clouds, the Plain of the Six Glaciers, Saddleback, Paradise Valley. Or, if you're an Alpine climber, you'll trudge the high trail to Lake O'Hara with your Swiss Guide, over Abbot Pass. But if you prefer the easy life, there's color and variety enough from your comfortable terrace chair. And there's always gaiety in and around the Chateau—with rooms and suites for 700 guests—spacious public rooms, ballroom and concert music, and every comfort!

WHAT TO DO AT

Lake Louise

- ★ PHOTOGRAPHY
- ★ SWIMMING
- ★ FISHING
- ★ TRAIL RIDING
- ★ DANCING
- ★ HIKING
- ★ TENNIS
- ★ MOTOR TRIPS
- ★ GLACIER CLIMBING
- ★ BOATING AND CANOEING

Lovely Lake Louise

**THE MOST
PHOTOGRAPHED
LAKE IN THE
WORLD**



Lake waters tempt the swimmer to the open-air pool.



Sapphire-blue waters blend with colorful living at Lake Louise.

There's fun enough at Lake Louise to stand out in a lifetime of memories. Swimming in a glass-walled pool high in Canada's Rockies. Riding along the skyline on sure-footed ponies. Swiss guides for your mountain climbing adventures whether you're amateur or veteran. Boating on the waters of lovely Lake Louise, encircled by mountains. From sun-up to sun-down the surrounding beauty calls you forth to happy and healthful living.



Moraine Lake

VALLEY OF THE TEN PEAKS

Moraine Lake, nine miles from Chateau Lake Louise, is flanked by ten peaks all over 10,000 feet above sea level. The hanging glacier of Mount Fay, Mount Deltaform, Mount Neptuak and Mount Wenchemna are landmarks.



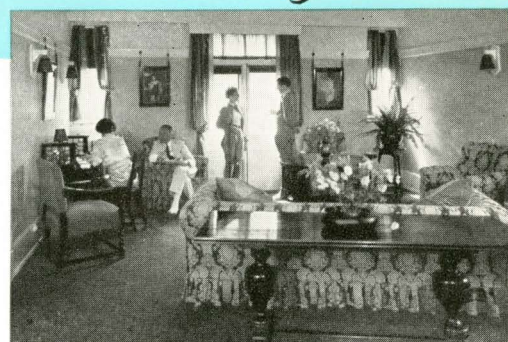
**RUGGED BEAUTY... BREATH-TAKING CHARM
WITH THE COMFORTS OF MODERN LIVING AT**

Lake Louise



THE GRACIOUS CHATEAU LAKE LOUISE

Indoors and out there's color and pleasant life at lovely Lake Louise. Handsome suites and big, inviting rooms in your Chateau. Lounges and ball-room, spacious and beautiful. And wide, high windows make your dining room the sun parlor of this famous beauty spot. Motor to nearby Moraine Lake in the Valley of the Ten Peaks, or along the Columbia Icefield Highway.



SITTING ROOM OF A SUITE



THE ROTUNDA, CHATEAU LAKE LOUISE



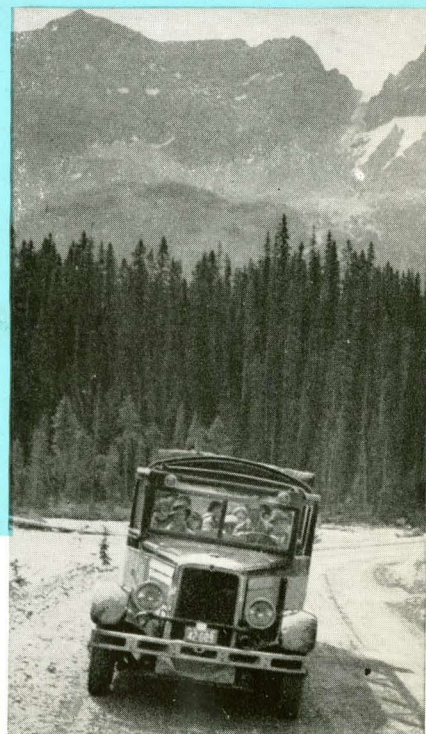
EXQUISITE EMERALD LAKE . . .
NESTLED HIGH IN THE ROCKY MOUNTAINS

QUAINT, SWISS-LIKE CHARM
AND JOYOUS INFORMALITY AT

Emerald Lake

IN YOHO NATIONAL PARK

Here's a mountain hideaway that will intrigue you with its Alpine charm. This placid gem of jewel-toned water, which you reach over the spruce-fragrant Snowpeak Avenue is encircled by majestic peaks—10,297 ft. Mt. President, 8,463 ft. Mt. Burgess and 8,332 ft. Emerald Peak. On its clear green shores is your mountain home—Swiss-like Emerald Lake Chalet with its rustic, deeply comfortable cabins nestled around it, each with private bath.



MODERN MOTOR BUSES TO EMERALD
LAKE FROM BANFF . . . LAKE LOUISE

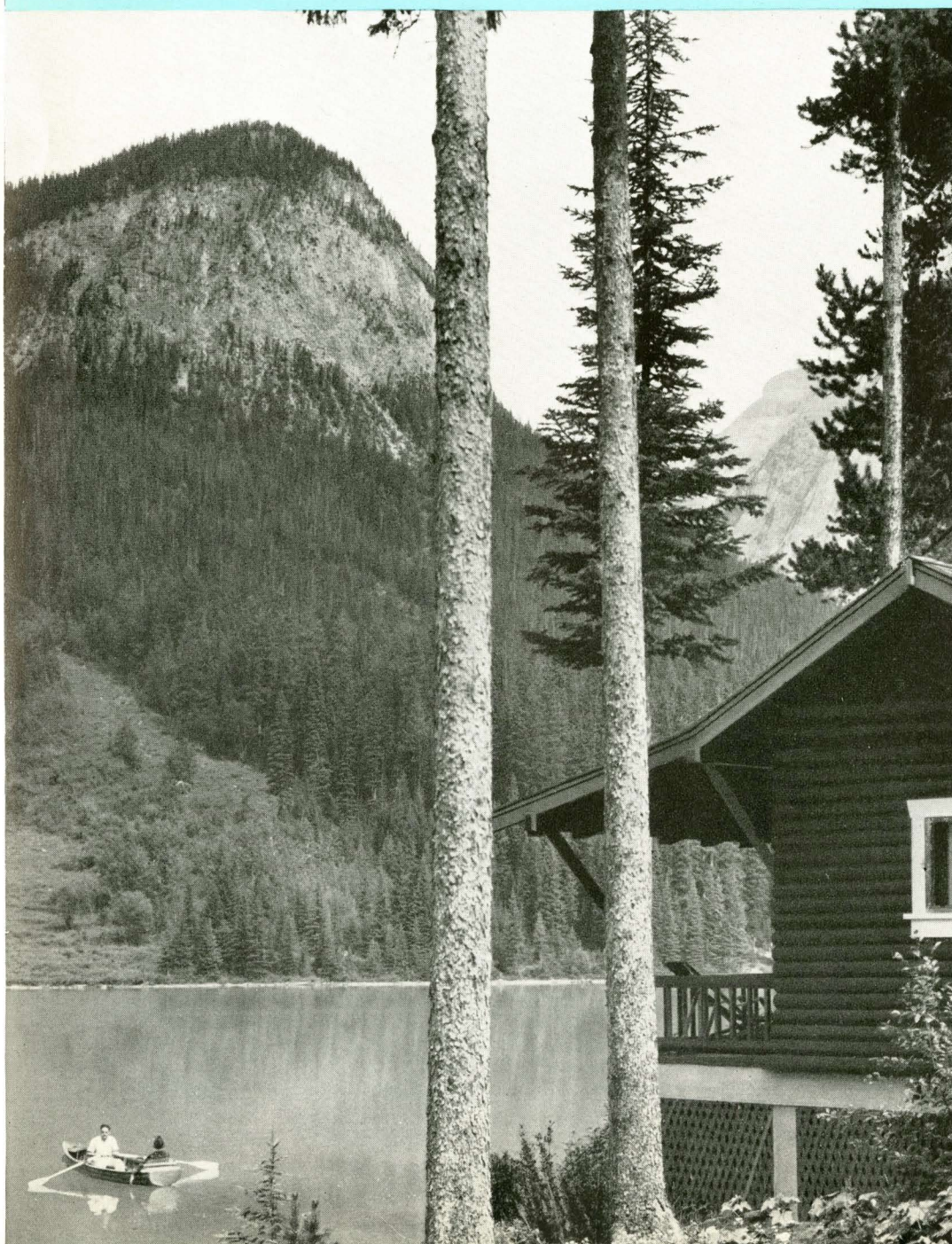
MOUNTAIN TRAILS TO THE TOP OF THE WORLD

In America's Alpine Playground



WHAT TO DO AT ***Emerald Lake***

- ★ TRAIL RIDING
- ★ MOUNTAIN CLIMBING
- ★ PHOTOGRAPHY
- ★ BOATING AND CANOEING
- ★ MOTOR SIDE TRIPS
- ★ HIKING
- ★ COMMUNITY EVENINGS



Informality is the order of the day at this lake of many moods—for Emerald Lake, though often clear as its name, changes to milky hues of jade, typical of glacial waters. You'll spend invigorating days riding or hiking the Alpine trails, bordered by bright, wild flowers such as Nancy-over-the-Ground and Red Indian Paint Brush. You'll enjoy the peace and majesty of this mountain-guarded inner-world. And by night you'll listen to tales of cowboys, and other romantic souls gathered round a roaring fire of logs. From dawn to night you'll find your days at Emerald Lake Chalet filled with fun and rest.



CROWFOOT GLACIER

NEW *Columbia Icefield Highway*

COMPLETED FOR 1940..FLANKED WITH MAJESTY . . .

BOW LAKE AND GLACIER



Enjoy the newest icefield-highway drive in North America . . . from Lake Louise to the Columbia Icefield and return. This wide, smooth highway is complete for 1940. Fringed by forests and flanked by Alpine peaks and vast glaciers, now you can pay a memorable visit to gleaming valleys with hanging glaciers caught between giant peaks on the crest of the world—creating tumbling waterfalls and glacial lakes! Now you'll see the largest body of ice south of the Arctic Circle, estimated at 150 square miles. Spectacular tours are operated from the Chateau Lake Louise to the Columbia Icefield and return at moderate cost.

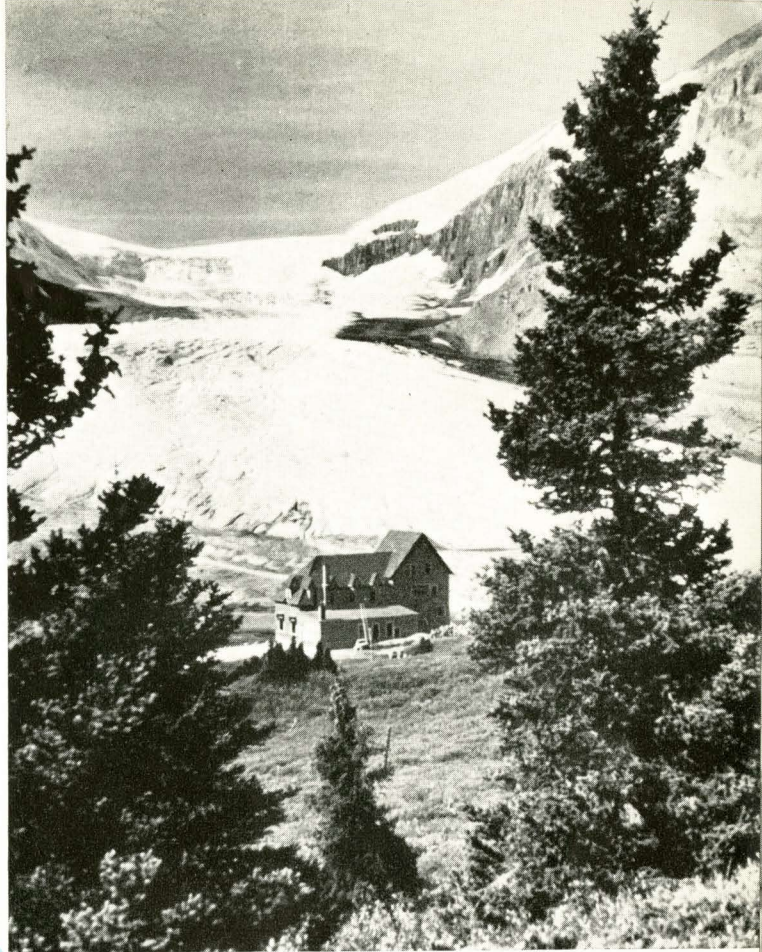
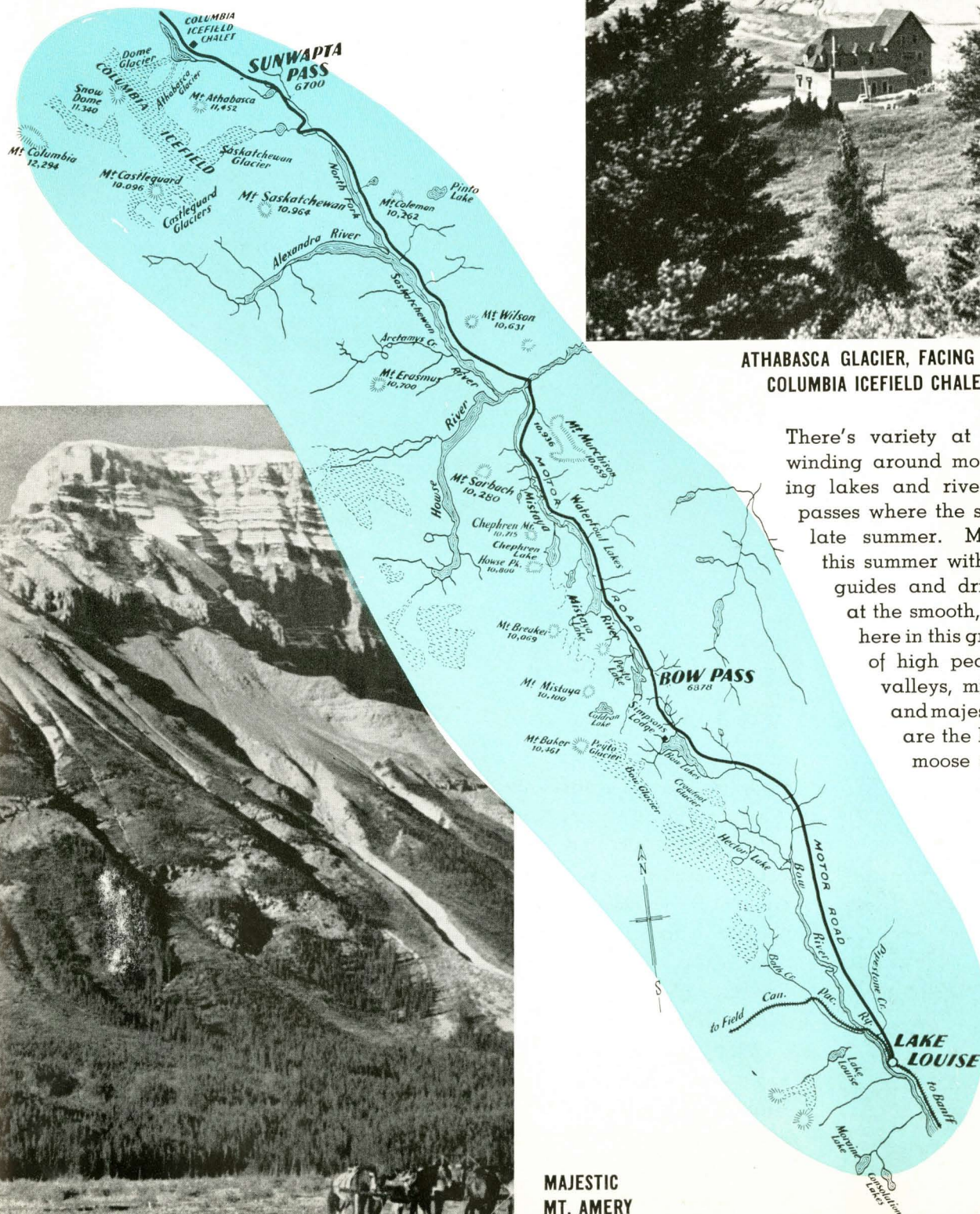
[14]

SASKATCHEWAN GLACIER (C) Carscallen



MAP OF COLUMBIA ICEFIELD HIGHWAY FROM LAKE LOUISE

Here is a drive unsurpassed in America! Every mile is spectacularly scenic . . . dotted with mighty peaks and amazing glaciers. At 11,000 feet elevation you'll see fields of ice that have been packed in these valleys for ages! Also, Mt. Hector, Crowfoot and Bow Glaciers, Howse Peak, Bow and Waterfowl Lakes, Mt. Murchison, Peyto Glacier, Mt. Saskatchewan and the Athabasca Glacier.



ATHABASCA GLACIER, FACING THE
COLUMBIA ICEFIELD CHALET

There's variety at every turn—winding around mountains, skirting lakes and rivers, over high passes where the snow lies until late summer. Make the trip this summer with experienced guides and drivers—marvel at the smooth, modern road here in this great upheaval of high peaks and deep valleys, mighty glaciers and majestic forests that are the haunt of deer, moose and bear.

**ROUGH IT IN SOLID COMFORT
AMID TOWERING SNOW-CLAD
PEAKS AND VIRGIN TIMBER**

4 Mountain Lodges

**LAKE O'HARA
MORAINES LAKE
LAKE WAPTA
YOHO VALLEY**



TAKAKKAW FALLS, YOHO VALLEY

★ Tucked away in secluded, lake-studded regions are these four havens of informal life—Lake O'Hara, Lake Wapta, Moraine Lake and Yoho Valley lodges. Here, in cozy cabins you'll live a rustic life amid civilized comforts—with central lodges for delightful meals and happy gatherings. Beautiful lakes and streams stocked with mountain fish—trails for hiking and riding through practically virgin territory. Unending vistas of Alpine grandeur hidden away from the everyday world. Rates, by day or week, are surprisingly reasonable.



YOHO VALLEY LODGE

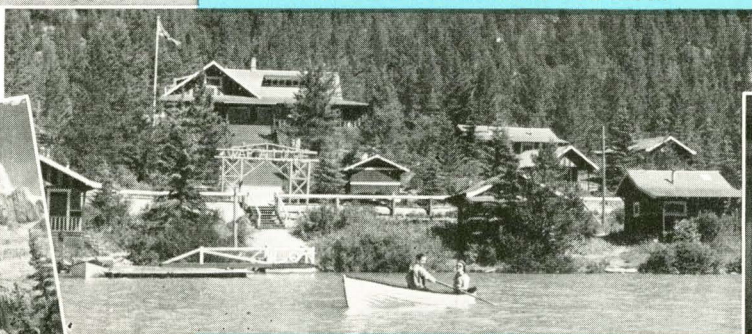
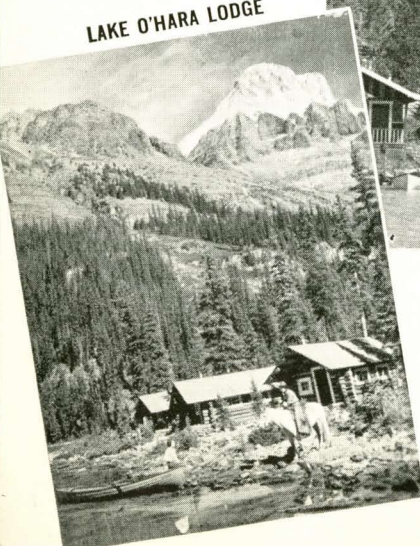


RUSTIC CABINS WITH MODERN COMFORTS



ONE OF THE NEW CABINS AT
MORAINES LAKE LODGE

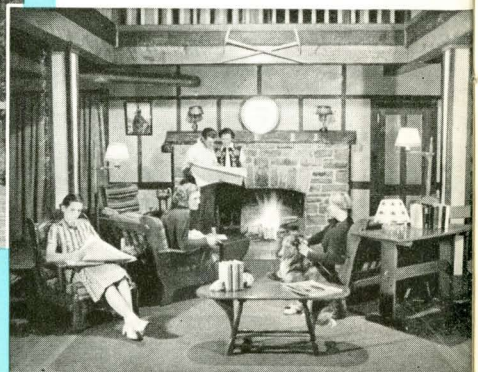
LAKE O'HARA LODGE



WAPTA LODGE OVERLOOKING LAKE WAPTA



HEARTY MEALS FOR ALPINE APPETITES



CONGENIAL COMPANIONSHIP IN
THE CENTRAL CHALET

WHAT TO DO AT Mountain Lodges

- ★ FLY FISHING
- ★ TRAIL RIDING
- ★ MOUNTAIN CLIMBING
- ★ BOATING... CANOEING
- ★ PHOTOGRAPHY
- ★ MOTOR TRIPS
- ★ COMMUNITY GATHERINGS
- ★ REST DELIGHTFULLY

TRAIL RIDERS

SKY LINE HIKERS

of the Canadian Rockies

★ Saddle your pack and leave the bridle paths behind. Ride off with the Trail Riders of the Canadian Rockies—over little-known trails, many of them blazed just for this band of adventurers. Ride where motor cars have never gone—above the timberline on the crest of the world. Head your horse over Alpine passes, through mountain meadows, surrounded by mighty peaks at every turn. The annual ride of five days marks a new adventure every year—with pack horses and guides. Earn your Trail Rider's buttons and brooches by your mileage. This summer the Trail Riders ride from Marble Canyon (on the Banff-Windermere Highway) to Lake Louise over Wolverine Plateau by way of Lake O'Hara . . . July 26 to 30.

★ There are trails you'll never tread, mountain glories you'll never see and camping thrills you'll never know—until you join the Sky Line Hikers Camp in the Canadian Rockies. It's a congenial group of nature lovers. Artists, authors and interesting people comprise this band of Alpine hikers. And you're invited to join them for four companionable days (August 2-5) at this year's Camp at Egypt Lakes in exquisite Alpine country southwest of Banff. You'll gather round campfires and sing the songs of the mountains. Sleep up under the stars—nearer the moon among these tremendous peaks. There's also the Alpine Club of Canada's Annual Camp at Glacier Lake, north of Lake Louise, near the Columbia Icefield Highway, July 14 to 30.



THREADING THE
GORGES OF THE

Great Barrier



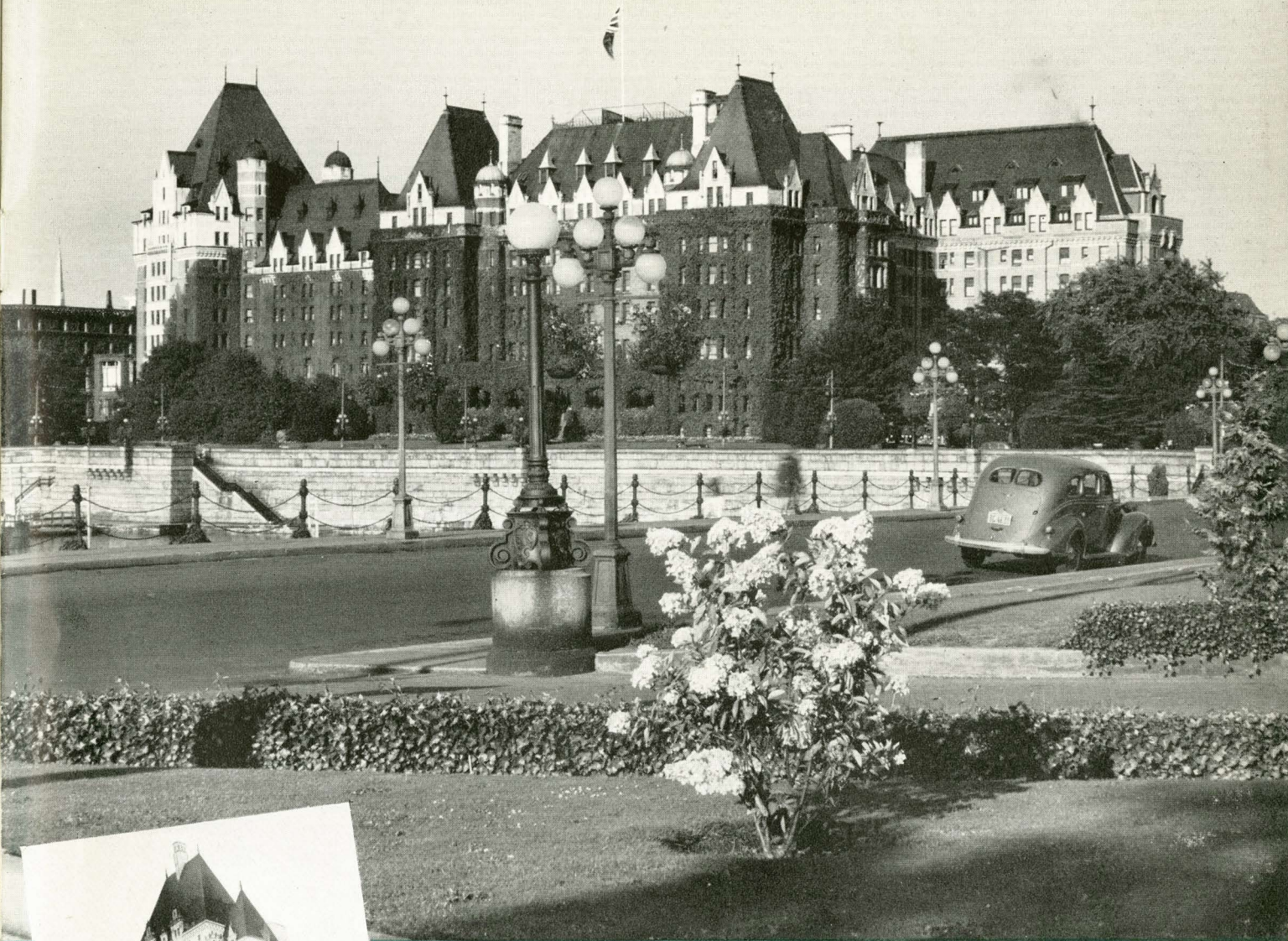
CANADIAN PACIFIC OBSERVATION CAR

CANADIAN PACIFIC TRAIN IN THE KICKING HORSE PASS

Between the summit of the Great Divide and the level of the Kicking Horse River at Field, a distance of about eleven miles, there is a drop of over eleven hundred feet. To maintain a railway grade not exceeding 2.2 per cent., spiral tunnels were driven through Mount Ogden and Mount Cathedral making two complete circles. A five-mile tunnel was driven through Mount Macdonald—the celebrated Connaught Tunnel.

These are only two of many spectacular engineering features on the Canadian Pacific Railway between Banff and the Pacific Coast. To enable the traveller to enjoy the magnificent scenery, open observation cars with wide windows are attached to supplement the regular observation cars on the mountain division so that you can see the towering peaks of Mount Cathedral and Mount Sir Donald without craning your neck, and can look down on the roaring cataracts that storm through the canyons at your side.

The whole of the Pacific Slope is clad in luxuriant verdure, with enormous trees of spruce and Douglas fir enriching the mountain sides. With air-conditioned, fast transcontinental trains, the traveller by Canadian Pacific sees all these marvelous panoramas in comfort.



THE CHARMING EMPRESS HOTEL, VICTORIA

*Victoria and
Vancouver*



NEW HOTEL VANCOUVER,
operated by the Vancouver Hotel
Co. Limited, on behalf of the
Canadian Pacific and Canadian
National Railways.

WHAT TO DO IN
Canada's
Evergreen Playground

- ★ GOLF
- ★ SWIMMING
- ★ RIDING
- ★ TENNIS
- ★ MOTORING
- ★ DANCING
- ★ FISHING
- ★ BOATING

VANCOUVER. Canada's metropolis on the Pacific Coast, Vancouver has a fine harbor in a beautiful setting of mountain background. The sub-tropical virgin forest has been retained in Stanley Park—a natural reservation of 1,000 acres within the city limits. Nearby are Capilano, Lynn and Seymour Canyons, Grouse Mountain and Indian River Park. Great Canadian Pacific *Empress* steamships sail between Vancouver, Honolulu and the Orient, and Canadian Australasian liners ply to and from Vancouver, Honolulu, Fiji, New Zealand and Australia.

VICTORIA. Linked with Vancouver and Seattle by the Triangle Service of Canadian Pacific *Princess* liners, Victoria is a gracious bit of old England situated in the heart of Canada's Evergreen Playground. Overlooking the Inner Harbor is the charming Empress Hotel—headquarters for all who would enjoy the beauty, hospitality and outdoor life of Victoria. Set in lovely gardens and clad in ivy, the Empress Hotel invites you to its famous Crystal Garden playground, including one of the largest warm sea-water pools in America. And all Victoria calls you forth—to its colorful gardens, parks, museum, drives and imposing Parliament Buildings.

ALASKA AND THE YUKON

THE LAST FRONTIER OF ROMANTIC ADVENTURE



"PRINCESS CRUISES" TO ALASKA AND THE YUKON

Go northward—on one of America's most adventurous vacation trips. A panorama of high fjords, steep mountains and glaciers awaits you as you sail on smooth blue waters. In the scenic, sheltered Inside Passage you'll see towering peaks, gleaming glaciers, totem pole villages, Gold Rush towns . . . under the spell of the Midnight Sun.

There are fascinating 2000-mile, 9-day cruises that make this voyage an economical adventure. *Princess* liners sail frequently from Vancouver (with connections from Victoria and Seattle) and six ports are visited en route. Climax your journey through the Canadian Rockies with such a cruise. You'll enjoy the luxuries of Canadian Pacific *Princess* liners, and their ocean-liner life, deck games and dancing. There are convenient connections from Skagway over the Trail of '98 and to the Yukon . . . at low cost. For further information ask for descriptive folder on *Princess* cruises to Alaska which may be obtained from your own travel agent or any Canadian Pacific agent listed opposite.

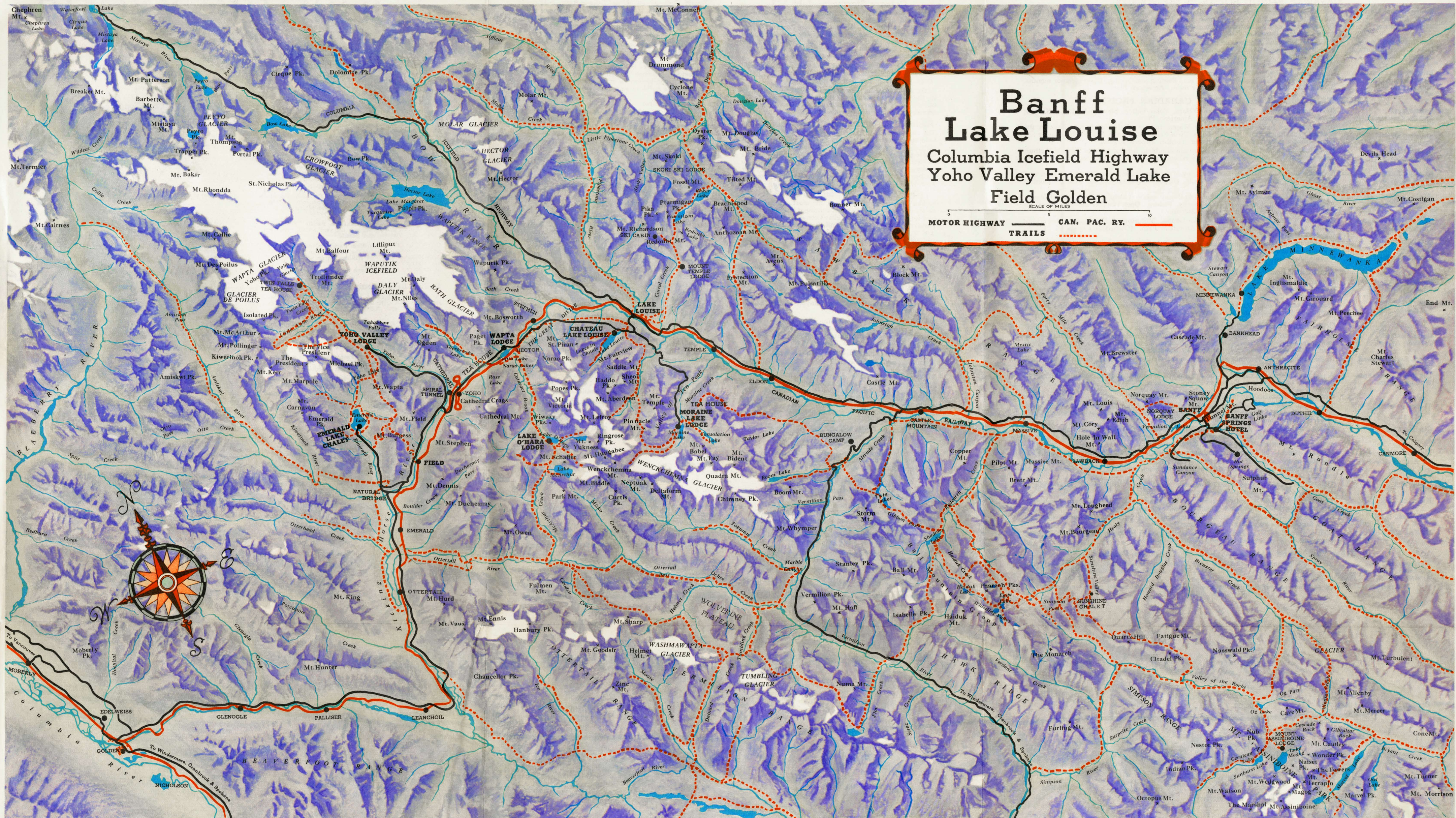


ONE OF THE MANY DECK SPORTS



CANADIAN PACIFIC "PRINCESS" LINER

See the CANADIAN ROCKIES... An Alpine Wonderland... Fifty Switzerlands in One



YOUR HOST ACROSS CANADA

Hotels and Lodges of beauty and efficiency . . . Noted for Comfort, Service and Cuisine at Moderate Rates

CANADIAN PACIFIC HOTELS IN THE ROCKIES

BANFF SPRINGS HOTEL
Banff, Alberta
Altitude 4,625 feet

CHATEAU LAKE LOUISE
Lake Louise, Alberta
Altitude 5,680 feet

EMERALD LAKE CHALET
Near Field, B.C.
Altitude 4,272 feet

In the heart of Banff National Park. Alpine climbing, mountain motoring on good roads, mile-high golf, bathing, hot sulphur springs, tennis, fishing, boating, hiking and riding. Dance and concert orchestras. Open summer months. Special discount for stay of one week or more. European Plan.

Facing an exquisite Alpine lake in Banff National Park. Mountain climbing with Swiss guides, pony trips, swimming, tennis, boating, fishing in neighboring waters, motoring to the Columbia Icefield and other Alpine glories. Dance and concert orchestras. Open summer months. Special discount for stay of one week or more. European Plan.

Situated at the foot of Mount Burgess, in picturesque Yoho National Park. Roads and trails to the Burgess Pass, Yoho Valley, etc. Boating and fishing. Open summer months. Special discount for stay of one week or more. American Plan.

MOUNTAIN LODGES REACHED BY CANADIAN PACIFIC

LAKE WAPTA
Altitude 5,219 feet

YOH VALLEY
Altitude 5,000 feet

LAKE O'HARA
Altitude 6,664 feet

MORaine LAKE
Altitude 6,200 feet

MOUNT ASSINIBOINE
Altitude 7,200 feet

RADIUM HOT SPRINGS
Altitude 3,456 feet

COLUMBIA ICEFIELD CHALET
Altitude 6,525 feet

Near Hector Station. Trips to Lake O'Hara, Yoho Valley, Sherbrooke Lake, Kicking Horse Canyon. Open summer months. American Plan.

By motor from Lake Louise, Field or Wapta, in one of the loveliest valleys in the Rockies. Takakkaw Falls, Summit Lake, Twin Falls, Point Lace Falls, Yoho Glacier . . . hikes, climbs, pony trips. Open summer months. American Plan.

By trail from Hector, B.C. Riding, mountain climbing, fishing, trips to Lake McArthur, Lake Oesa and Opabin Meadows, also to Abbot Pass. Open summer months. American Plan.

By motor from Lake Louise. Head of Valley of the Ten Peaks, near Consolation Lake and Larch Valley. Trout fishing, pony trails, climbs, hikes, etc. Open summer months. American Plan.

By trail from Banff. Overnight stop in half-way cabin. Camp is at the foot of Mount Assiniboine (11,860 ft.). Eleven lakes nearby. Fishing. Open summer months. American Plan. (Owned and operated by Erling Strom).

By motor (92 miles) from Banff or Lake Louise. Motoring, climbing, swimming in hot radium pools. Open summer months. American Plan. (Owned and operated by Miss Charlotte Armstrong).

A motor trip of 84 miles from Lake Louise to the spectacular Columbia Icefield. Chalet is at the foot of the Athabasca Glacier, on the Columbia Icefield Highway. Open summer months. American Plan. (Owned and operated by the Brewster Transport Co.)

Canadian Pacific Hotels on the Pacific Coast

EMPRESS HOTEL
Victoria, B.C.

HOTEL VANCOUVER
Vancouver, B.C.

A charming hotel in Canada's Evergreen Playground, which by its equable climate has become a favorite summer and winter resort. Motoring, yachting, fishing, hunting and all-year golf. Crystal Garden for swimming and music. Open all year. European Plan.

This new hotel is operated by the Vancouver Hotel Company on behalf of the Canadian Pacific and Canadian National Railways. Open all year. European Plan.

Canadian Pacific Hotels on the Prairies

HOTEL PALLISER
Calgary, Alberta

HOTEL SASKATCHEWAN
Regina, Sask.

THE ROYAL ALEXANDRA
Winnipeg, Man.

A handsome hotel of metropolitan standard. Suited equally to the business man or the tourist travelling to or from the Canadian Rockies, or beyond. Open all year. European Plan. Make reservations early for Calgary Stampede Week.

In the capital of the Province of Saskatchewan. Golf and motoring. Social center. Open all year. European Plan.

A popular hotel in the capital of the Province of Manitoba, and the center of Winnipeg's social life. Open all year. European Plan.

Canadian Pacific Hotels in Eastern Canada

Toronto, Ont.

Quebec, Que.

McAdam, N.B.

St. Andrews-by-the-Sea, N.B.

Digby, N.S.

Kentville, N.S.

Yarmouth, N.S.

Halifax, N.S.

The Royal York — The largest hotel in the British Empire. Ideal convention headquarters. Moderate rates. Variety of restaurants. Dance and concert orchestras. Radio in every room. Open all year. European Plan.

Chateau Frontenac — A metropolitan hotel in one of the most historic and romantic cities of North America. Headquarters for winter sports, including thrilling ski-ing at nearby Lac Beauport. Open all year. European Plan.

McAdam Hotel — A commercial and sportsman's hotel. Open all year. American Plan.

The Algonquin — Holiday colony and social center of New Brunswick's most popular seaside summer resort. Golf, swimming, boating, tennis, dancing, riding. Open summer months. American Plan.

The Digby Pines — Nova Scotia's premier resort hotel. Golf, tennis, glass-enclosed swimming pool. Open summer months. American Plan.

The Cornwallis Inn — suited equally to the tourist and business man. Center for excursions to Evangeline Land. Open all year. American Plan.

Lakeside Inn — Designed in attractive bungalow style. Golf available for hotel guests. Tuna fishing. Open summer months. American Plan.

Lord Nelson Hotel — A charming hotel in the capital of Nova Scotia. Open all year. European Plan. (Operated by Lord Nelson Hotel Co.).

Other Hotels and Lodges reached by Canadian Pacific

Sicamous, B.C. Hotel Sicamous
Pentiction, B.C. Hotel Incola
Agassiz, B.C. Harrison Hot Springs Hotel

Cameron Lake (Vancouver Island), B.C., Cameron Lake Chalet

French River, Ont. French River Chalet-Bungalow Camp

Kenora, Ont. Devil's Gap Lodge

For further information and reservations apply to hotel managers, your local travel agent, or nearest Canadian Pacific Office.

Canadian Rockies Feature Attractions • 1940

Calgary Stampede—July 8-13

Calgary Stampede is the greatest event of its kind in the world, contestants coming from all parts of the continent to compete. All the typically "rodeo" events are featured — roping, broncho busting, covered wagon racing, Indian races, etc. Each year, too, there is the Stampede Ball when all Calgary goes carnival. No visitor to the West should miss this spectacle.

The Hotel Palliser, owned and operated by the Canadian Pacific, is the ideal headquarters. Rates range from \$3.50 per day, European Plan.

After the Stampede, why not plan to spend a vacation in the Canadian Rockies? Banff is situated only 82 miles west of Calgary. Lake Louise is also within easy access, being only two hours west of Banff.

Alpine Club of Canada Camp—July 14-30

The annual camp of The Alpine Club of Canada will be held amid spectacular scenery at Glacier Lake in Banff National Park, July 14-30. The base camp will be located about 52 miles north of Lake Louise on the glacier-flanked Columbia Icefield Highway. This new highway will be officially opened on July 1. For further particulars write to W. R. Tweedy, Secretary-Treasurer, 1641 Burnaby St., Vancouver, B.C.

Indian Days at Banff—July 18-21

Indian Days at Banff is one of the most colorful spectacles on the North American continent. Between three and four hundred Stoney Indians come from the Morley reserve, 40 miles east of Banff, for their tribal sports. The tribe travels on horse back, and the color schemes of their headdress and beaded costumes are fascinating.

Trail Riders of the Canadian Rockies July 26-30

This order holds an official riding and camping trip each summer, starting from a convenient center. The dates of this year's ride are July 26-30. The rate is \$50 which includes horses, food, service of guides, tent accommodation, gratuities and bus transportation from Banff to the starting point at Marble Canyon on the Banff-Windermere Highway.

The trail crosses the Wolverine Plateau and goes by Lake O'Hara to Lake Louise. For further particulars write to the Secretary-Treasurer, Room 318, Windsor Station, Montreal, or L. S. Crosby, Banff, Alta.

Sky Line Trail Hikers Camp—Aug. 2-5

This camp will be located in 1940 at Egypt Lakes, in exquisite Alpine country southwest of Banff. There will be a central camp from which trails radiate for hikes through beautiful Alpine meadows. Rate for tent accommodation and meals for the four days (\$20) includes packing of duffle from Banff station. Further particulars from Secretary-Treasurer, Room 318, Windsor Station, Montreal, or from Dan McCowan, Western Secretary, Banff, Alta.

Banff Golf Week—Aug. 18-24

BANFF SPRINGS TROPHY (Men)

LAKE LOUISE TROPHY (Women)

Open to amateur golfers who are members in good standing of any recognized golf club, and who are registered guests at the Banff Springs Hotel.

THE EDWARD, PRINCE OF WALES CUP (Men)

THE BREWSTER CUP (Women)

Open to all amateur members in good standing of any recognized golf club.

THE WILLINGDON TROPHY (Men)

THE ASSOCIATED SCREEN NEWS CUP (Women)

Open to amateurs who are members in good standing of any recognized golf club. Played under Club handicaps. Various other events for which desirable prizes are given round out a full week of golf.

In addition, minor competitions are arranged each week throughout the season. Details from Canadian Pacific agents or Manager, Banff Springs Hotel, Banff, Alta.

CANADA WELCOMES U.S. CITIZENS . . . NO PASSPORTS!

Banff School of Fine Arts—Aug. 1-31

This popular summer school, under the direction of the Department of Extension, University of Alberta, offers courses of instruction in Drama, Music and Art.

Fishing Seasons in National Parks

Special regulations governing fishing in Banff, Yoho, Kootenay and Waterton Lakes National Parks of Canada:—

Fishing in these Parks is permitted with rod and line only, provided a license is obtained, the fee for which shall be \$2.25 per season or fraction thereof. Such a license shall be valid in any National Park where a license is required.

The open seasons are:

Great Lake Trout:— May 16 to August 31. Limit of catch: 50 pounds per day, unless one fish weighs more than 50 pounds. Not more than 5 Great Lake Trout may be caught in one day, even though the 5 fish caught weigh less than 50 pounds.

Other varieties of stream and lake trout:—July 1 to September 30. (Boom Lake is open for fishing July 16 to September 30.) Limit of catch: 10 fish (limit 20 pounds). No fish less than 8 inches in length may be retained.

For fishing information write to:— General Tourist Agent, Windsor Station, Montreal.

Swiss Guides Rates

Swiss Guides are men thoroughly experienced in mountain climbing, gained by years of service in the Swiss Alps and latterly in the Canadian Rockies. They were engaged in Switzerland and placed in the Canadian Rockies some years ago by the Canadian Pacific Railway, to guide patrons desiring to climb in the Rockies and requiring the services of expert climbers. The Swiss village, "Edelweiss," has been established one mile west of Golden, as their permanent residence. During the season the guides' headquarters are at Chateau Lake Louise. Application and reservations for their services should be made to the Manager of Chateau Lake Louise at least a week or two in advance of time required.

Rate for each guide is \$7.00 per day and sustenance, the guide providing ropes and ice axes.

Rowboat and Canoe Rates—Banff

	Per Hour	Per ½ Day 5 hrs.	Per Day 10 hrs.
For one person	\$.25	\$1.00	\$1.50
For two or more persons	.50	1.50	2.50
Charge for boatman	1.00		6.00

Bow River Motor Launch Trips: 10.30 a.m., 2.30 p.m., 4.30 p.m., round trip 16 miles, time 1½ hrs., fare \$1.00. Evening trips: 7 p.m. and 8 p.m., 10 miles, 1 hr., 75c.

Rowboat and Canoe Rates—Lake Louise

1 person	50c. per hour
Each additional person	25c. per hour

Rates for Horses and Guides

(Established by the Canadian Government:)

	Per Hour	Per ½ Day	Per Day
Saddle horse	\$1.50*	\$3.00	\$4.50
Guide with horse	1.50	3.50	6.00
Pack horse			2.50

One day consists of 9 hours and not more than 20 miles.

*For each additional hour, \$1.00.

Green Fees at Banff

Green fees at Banff Springs Hotel Golf Course are: round \$2.00; day \$3.00; week \$12.00; month \$45.00; and season \$75.00.

Special Family Rates: Regular rate for the first member of the family and half the regular rate for each additional member except in case of rate for single round.

A fully equipped pro-shop is operated at the Club House. Caddies are also available.

Spans the World



• Canada and the United States

THE CANADIAN PACIFIC RAILWAY (comprising 21,235 miles of operated and controlled lines) stretches from the Atlantic to the Pacific, across Canada and into the United States. The main line, Montreal to Vancouver, 2,886 miles, passes through the heart of the lofty Canadian Rockies, with their crowning jewels of Banff, Lake Louise and Emerald Lake, unsurpassed as vacation resorts. Modern and comfortable transcontinental and local passenger train services link the important cities, industrial sections, agricultural regions and holiday resorts. Fast and efficient freight service. Convenient coastal and inland lake steamship services. Builds and operates air-conditioned equipment.

ALASKA . . . Frequent service by Canadian Pacific "Princess" liners from Vancouver (connections from Victoria and Seattle) to Skagway and return via the "Inside Passage".

TRIANGLE SERVICE — Canadian Pacific "Princess" liners operate a daily service, the year round, between Vancouver, Victoria and Seattle.

GREAT LAKES . . . Canadian Pacific inland steamships sail semi-weekly during the summer months between Port McNicoll and Port William via an attractive lake and river route.

Summer cruises from Owen Sound and Port McNicoll.

• 39% Less Ocean to Europe

AIR-LINE ROUTE . . . Sailings via the short St. Lawrence Seaway from Montreal and Quebec (summer) . . . (Saint John, N.B., in winter) . . . to and from British ports.

FAST FREIGHT SERVICE provided by Empress, Duchess, "Mont" liners and "Beaver" cargo ships.

• Honolulu, Orient and South Seas

Regular sailings between Vancouver and Yokohama, Kobe, Nagasaki, Shanghai, Hong Kong, Manila provide convenient passenger and freight schedules.

DIRECT EXPRESS ROUTE TO ORIENT . . . swift sister ships, Empress of Asia and Empress of Russia.

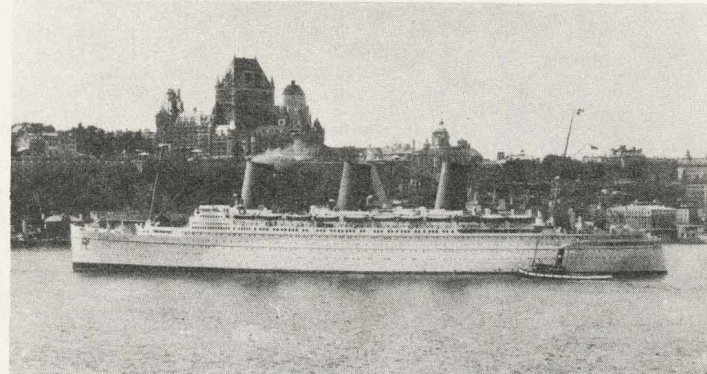
VIA HONOLULU . . . The mighty Empress of Japan and her running mate, Empress of Canada, call at Honolulu en route to and from the Orient.

SOUTH SEAS . . . Canadian Australasian liners ply between Vancouver and Honolulu, Fiji, New Zealand, Australia.

• Hotels, Express, Communications

HOTELS . . . A chain of comfort across Canada from Atlantic to Pacific . . . Fourteen hotels in leading cities and resorts, including the Chateau Frontenac, Quebec; The Algonquin, St. Andrews-by-the-Sea, N.B.; Royal York, Toronto; Banff Springs; Chateau Lake Louise; Empress Hotel, Victoria . . . Six rustic lodges in the Canadian Rockies and at Ontario fishing resorts.

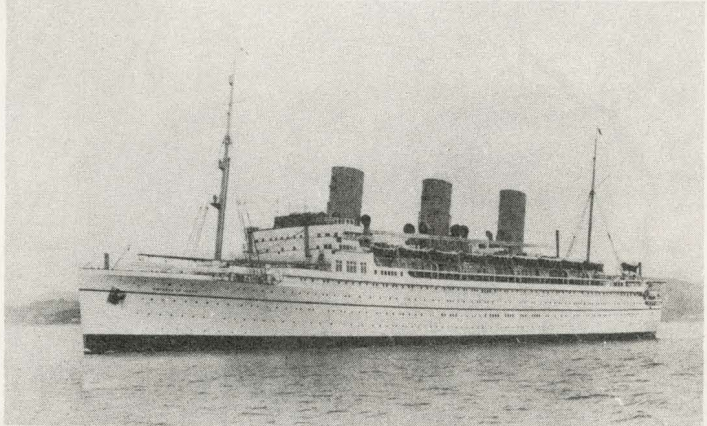
COMMUNICATIONS AND EXPRESS . . . owned and operated by the CANADIAN PACIFIC . . . trans-Canada service . . . world-wide connections . . . travellers cheques.



Empress of Britain and Chateau Frontenac Hotel, Quebec



Canadian Pacific Transcontinental Train near Banff

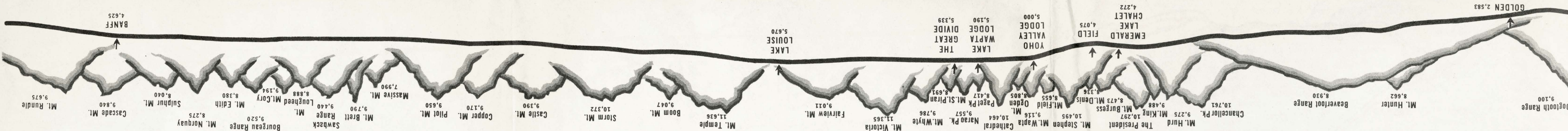


Empress of Japan—Largest and Fastest Liner on the Pacific



Canadian Pacific
WORLD'S GREATEST TRAVEL SYSTEM

ALTITUDES OF PRINCIPAL PEAKS FROM GOLDEN TO BANFF in the CANADIAN ROCKIES



PRINCIPAL CANADIAN PACIFIC AGENCIES THROUGHOUT THE WORLD

CANADA AND THE UNITED STATES

Atlanta, Ga.	W. A. Shackelford, General Agent Passenger Dept.	950 C. & S. Nat'l Bk. Bldg.
Banff, Alta. (Summer)	E. Officer, Special Passenger Representative	Canadian Pacific Station
Boston, Mass.	L. R. Hart, General Agent Passenger Dept.	405 Boylston St.
Buffalo, N.Y.	W. P. Wass, General Agent Passenger Dept.	22 Court St.
Calgary, Alta.	J. W. Dawson, District Passenger Agent	Canadian Pacific Station
Chicago, Ill.	T. J. Wall, General Agent Rail Passenger	71 East Jackson Blvd.
Cincinnati, Ohio	L. P. Dooley, City Passenger Agent	201 Dixie Terminal Bldg.
Cleveland, Ohio	G. H. Griffin, General Agent Passenger Dept.	1010 Chester Ave.
Dallas, Texas	P. G. Jefferson, District Passenger Representative	1304 Kirby Bldg.
Detroit, Mich.	M. E. Malone, General Agent Passenger Dept.	1231 Washington Blvd.
Edmonton, Alta.	W. L. Mitchell, City Ticket Agent	Canadian Pacific Bldg.
Fort William, Ont.	H. Lyall Martin, City Passenger Agent	108 South May St.
Guelph, Ont.	W. C. Tully, City Passenger Agent	30 Wyndham St.
Halifax, N.S.	A. C. MacDonald, City Passenger Agent	413 Barrington St.
Hamilton, Ont.	A. Craig, City Passenger Agent	4 King Street West
Honolulu, T.H.	Theo. H. Davies & Co. Agents	
Indianapolis, Ind.	A. C. Nieman, Travelling Passenger Agent	Merchants Bank Bldg.
Janeau, Alaska	V. W. Mulvihill, Agent	
Kansas City, Mo.	R. G. Norris, City Passenger Agent	201-2 Waldheim Bldg.
Ketchikan, Alaska	E. Anderson, Agent	
Kingston, Ont.	J. H. Welch, City Passenger and Freight Agent	180 Wellington St.
London, Ont.	H. J. McCallum, City Passenger Agent	417 Richmond St.
Los Angeles, Cal.	A. D. Macdonald, General Agent Passenger Dept.	621 South Grand Ave.
Milwaukee, Wis.	Wm. C. Giese, General Agent, Soo Line	1014 Warner Theatre Bldg.
Minneapolis, Minn.	H. M. Tait, General Agent Passenger Dept.	611 2nd Ave. South
Montreal, Que.	P. E. Gingras, District Passenger Agent	Windsor Station
Moose Jaw, Sask.	F. C. Lydon, General Agent Rail Passenger	201 St. James St. W.
Nelson, B.C.	R. G. West, Ticket Agent	Canadian Pacific Station
New York, N.Y.	N. J. Lowes, City Ticket Agent	Baker and Ward Sts.
North Bay, Ont.	J. E. Roach, General Agent Rail Passenger	Madison Ave. at 44th St.
Omaha, Neb.	R. Y. Daniaud, District Passenger Agent	87 Main Street West
Ottawa, Ont.	H. J. Clark, Travelling Passenger Agent	803 W. O. W. Bldg.
Peterboro, Ont.	J. A. McGill, General Agent Passenger Dept.	83 Sparks St.
Philadelphia, Pa.	T. G. M. Jamieson, City Passenger Agent	343 George St.
Pittsburgh, Pa.	E. A. Kenney, General Agent Passenger Dept.	Fifth Floor, 1500 Walnut St. Bldg.
Portland, Ore.	W. N. McKendry, City Passenger Agent	Koppers Bldg., 444 Seventh Ave.
Prince Rupert, B.C.	W. H. Deacon, General Agent Passenger Dept.	626 S.W. Broadway
Quebec, Que.	W. L. Coates, General Agent	
Regina, Sask.	C. A. Langevin, General Agent Passenger Dept.	Palais Station
Saint John, N.B.	J. C. Pike, District Passenger Agent	Canadian Pacific Station
St. Louis, Mo.	C. E. Cameron, District Passenger Agent	40 King St.
St. Paul, Minn.	G. P. Carbrej, General Agent Passenger Dept.	418 Locust St.
San Francisco, Cal.	W. H. Lennon, General Agent Rail, Soo Line	Fourth & Cedar
Saskatoon, Sask.	S. E. Corbin, General Agent Passenger Dept.	152 Geary St.
Sault Ste. Marie, Ont.	W. Fridfinnson, City Ticket Agent	115 Second Ave.
Seattle, Wash.	J. O. Johnston, City Passenger Agent	529 Queen St.
Sherbrooke, Que.	E. L. Sheehan, General Agent Passenger Dept.	1320 Fourth Ave.
Skagway, Alaska	J. A. Metivier, City Passenger Agent	91 Wellington St. North
Spokane, Wash.	L. H. Johnston, Agent	
Toronto, Ont.	E. S. McPherson, Spokane International Ry.	Old Nat. Bank Bldg.
Trois-Rivieres, Que.	H. C. James, Assistant General Passenger Agent	Canadian Pacific Building
Vancouver, B.C.	J. A. Tourville, City Passenger Agent	1262 Notre Dame St.
Victoria, B.C.	F. H. Daly, General Agent Passenger Dept.	434 Hastings Street West
Washington, D.C.	J. Macfarlane, General Agent Passenger Dept.	1102 Government St.
Windsor, Ont.	C. E. Phelps, General Agent Passenger Dept.	14th and New York Ave., N.W.
Winnipeg, Man.	W. C. Elmer, City Passenger Agent	196 Ouellette Ave.
	E. A. McGuinness, General Agent Passenger Dept.	Main and Portage Sts.

EUROPE

Antwerp, Belgium	H. S. Richardson	Place de Meir, 42
Belfast, Ireland	R. E. Swain	24 Donegall Place
Birmingham, England	G. W. Murrell	4 Victoria Square
Bristol, England	T. W. Thorne	18 St. Augustine's Parade
Brussels, Belgium	G. L. M. Servais	98 Blvd. Adolphe-Max
Dublin, Ireland	A. T. McDonald	44 Dawson St.
Glasgow, Scotland	C. L. Crowe	25 Bothwell St.
Liverpool, England	H. Taylor	Pier Head
London, England	G. A. Hobbs	Trafalgar Square, W.C. 2
Manchester, England	R. J. Harden	103 Leadenhall St., E.C. 3
Paris, France	R. L. Hughes	43 Cross St.
Rotterdam, Holland	A. V. Clark	24 Blvd. des Capucines
Southampton, England	J. Springett	Meent 128, Exchange Building
	E. S. Spackman	Canute Road

ASIA

Hong Kong	E. Hospes, General Agent Passenger Dept.	Opposite Blake Pier
Kobe, Japan	S. H. Garrod, Passenger Agent	7 Harima-machi
Manila, Philippine Islands	D. C. Miller, Passenger Agent	Marsman Building, Port Area
Shanghai, China	A. M. Parker, General Agent Passenger Dept.	The Bund and Peking Road
Tokyo, Japan	W. R. Buckberrough, Agent	E-7 No. 2 Sancho, Marunouchi
Yokohama, Japan	B. G. Ryan, General Agent Passenger Dept.	21 Yamashita-cho

AUSTRALIA, NEW ZEALAND, FIJI

Adelaide, S.A.	Macdonald, Hamilton & Co.	H. F. Boyer, Freight and Pass'r Agent,
Auckland, N.Z.	A. W. Essex, Traffic Agent for N.Z.	Can. Pac. Ry., 59 William St.
	Can. Pac. Ry., 32-24 Quay St.	Union S.S. Co. of New Zealand (Ltd.)
Brisbane, Qd.	Union S.S. Co. of New Zealand (Ltd.)	Macdonald Hamilton & Co.
Christchurch, N.Z.	Macdonald, Hamilton & Co.	Union S.S. Co. of New Zealand (Ltd.)
Dunedin, N.Z.	Union S.S. Co. of New Zealand (Ltd.)	N. R. McMorran, Traffic Agent for Aus.
Fremantle, W.A.	Union S.S. Co. of New Zealand (Ltd.)	Can. Pac. Ry., 247 George St.
Hobart, Tas.	Macdonald, Hamilton & Co.	Union S.S. Co. of New Zealand (Ltd.)
Launceston, Tas.	Union S.S. Co. of New Zealand (Ltd.)	G. A. Glennie, Freight and Pass'r Agent,
	Union S.S. Co. of New Zealand (Ltd.)	Can. Pac. Ry., 11 Johnston St.
		Union S.S. Co. of New Zealand (Ltd.)
Melbourne, Vic.		
Perth, W.A.		
Suva, Fiji		
Sydney, N.S.W.		
Wellington, N.Z.		

WORLD'S GREATEST TRAVEL SYSTEM

Always Carry Canadian Pacific Express Travellers Cheques

Canadian Rockies

and the PACIFIC COAST



DINING ROOM

CHATEAU LAKE LOUISE



Canadian Pacific