



Canadian Pacific Hotels



Banff Springs Hotel
in the Canadian Rockies



Mile-high golf at Banff

CANADIAN ROCKIES

Banff Springs Hotel—Open June 12 to Sept. 13, 1937.

A 600-room modern fireproof hotel situated in the heart of Banff National Park. Nestling in a magnificent mountain setting overlooking the Valley of the Bow, Banff Springs Hotel is noted for its fine appointments. Banff-land offers many entertainment features and sports attractions.



GOLF—on a mile-high course. Enjoy mountain climbing with experienced Swiss Guides, Tennis, Boating, Fishing, Riding, Dancing. Two Swimming Pools, one of hot sulphur water and the other clear crystal.

ANNUAL GOLF WEEK—August 23 to 28.

The Edward, Prince of Wales Cup for Men's Championship.
Brewster Cup for Ladies' Championship.
Associated Screen News Cup for 18-hole Ladies' Handicap.

INDIAN DAYS—July 23 to 25.

A colorful spectacle that brings three to four hundred Stoney Indians to Banff each summer for their tribal sports—mounted in gorgeous trappings and headpieces. A fascinating spectacle.



TRAIL RIDERS OF THE CANADIAN ROCKIES—July 30 to August 3—an order that holds an official riding and camping trip each year.

THE SKY LINE TRAIL HIKE—August 6 to 9. Organized with the object of encouraging more extensive use of the trails.

BANFF SCHOOL OF FINE ARTS—August 3 to 28—a summer school of music, drama and art.

Rates—All Rooms With Bath (European Plan)

Sulphur Mountain View

Single Rooms —\$6.50
Double Rooms—10.00

Suites—from \$12.00

Bow Valley View

Single Rooms —\$8.00	\$9.00	10.00
Double Rooms—	12.00	14.00

Transfer 1½ Miles
Between station and hotel, 50 cents per person each way. Hand baggage free; trunk 50 cents each way.

For stay of two weeks or more 10% discount on room or suite rates.
For stay of four weeks or more 20% discount on room or suite rates.

LOVELY LAKE LOUISE

Chateau Lake Louise—Open June 12 to Sept. 13, 1937.

Forty-two miles west of Banff, at an altitude of 5,680 feet, lies beautiful Lake Louise, praised by many as the most perfect gem of scenery in the known world. At the farther end dazzling ice-capped Victoria Glacier meets the view. Overlooking the lake is the Chateau Lake Louise, a modern fireproof 400 room hotel, situated 600 feet above the railway, and reached in comfort by motor car.

SWIM is an open-air, tiled swimming pool, located below the dining room and facing the lake. The glacial water is comfortably heated and an instructor is in attendance.

RIDE, HIKE OR CLIMB over the many trails that lead away from Lake Louise. There are short hikes that will thrill you with the minimum amount of effort, or for the more hardy, Alpine climbing accompanied by Swiss Guides that will pay big dividends for the time and effort expended.

LAKE LOUISE has numerous other attractions that will make your stay appear all too short, including Tennis, Boating, Clock Golf and Dancing.

Rates—All Rooms With Bath (European Plan)

Pipestone Range View

Single Rooms —\$6.50

Double Rooms—10.00

Suites—from \$16.00

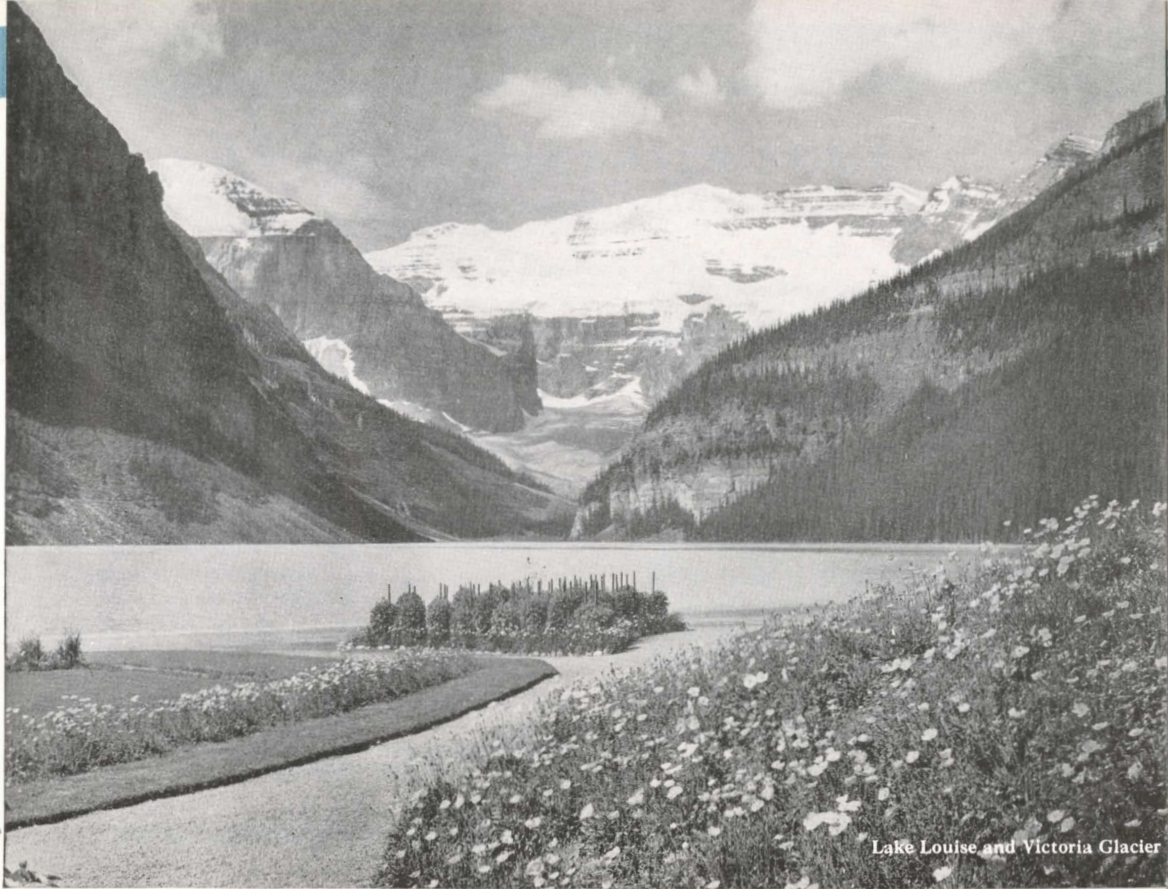
Lake View

Single Rooms —\$8.00 \$9.00 \$10.00

Double Rooms— 12.00 14.00

Transfer 3 Miles
Between station and hotel, 50 cents per person each
way. Hand baggage free; trunk 50 cents each way.

For stay of two weeks or more 10% discount on
room or suite rates.
For stay of four weeks or more 20% discount on
room or suite rates.



Lake Louise and Victoria Glacier

CANADIAN ROCKIES

EMERALD LAKE CHALET

near Field, British Columbia

Open June 12 to September 13, 1937

American Plan

Situated in Yoho National Park, seven miles from Field, B.C., in cool green depths of forest, is Emerald Lake, surrounded by snow-topped mountains . . . a delightful setting for Emerald Lake Chalet and its private bungalows—70 guest rooms. Recreations include boating, riding, hiking and Alpine climbing.

RATES

In Chalet—

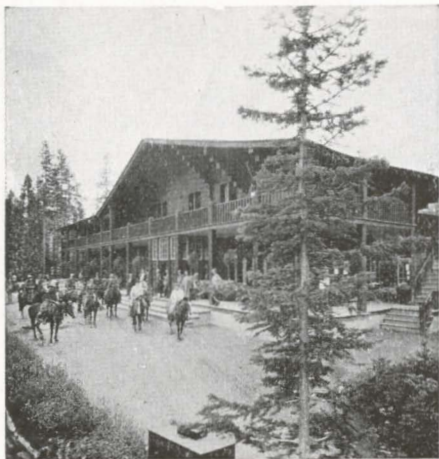
Single room and meals—without bath, \$7.00 per person; with bath, \$8.00 and \$9.00 per person.
Double room and meals—with bath, \$7.50 per person.

In Cottages—

Lakefront cottages and meals—two rooms with connecting bath, \$10.00 per person.

For stay of two weeks or more—10% discount
For stay of four weeks or more—20% discount

Transfer. 7 Miles
Between Field station and Chalet, \$1.00 per person each way. Hand baggage free; trunk \$1.00 each way.



EMERALD LAKE CHALET

CANADA'S MOUNTAIN PLAYGROUND

MOUNTAIN LODGES

(Formerly Chalet-Bungalow Camps)

RADIUM HOT SPRINGS

Radium Hot Springs, B.C.

YOHO VALLEY

via Field, B.C.

LAKE O'HARA

via Hector, B.C.

LAKE WAPTA

Hector, B.C.

MORaine LAKE

via Lake Louise, Alta.

Open June 21 to September 11, 1937

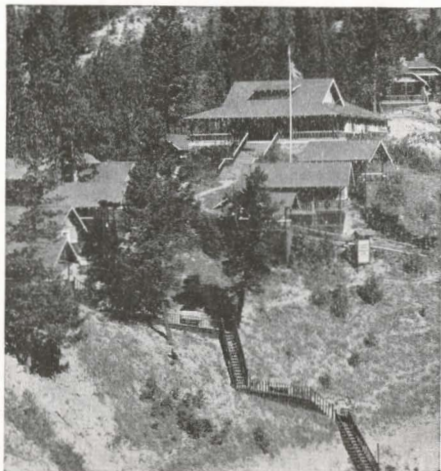
The Lodges consist of a central building or chalet with dining room and lounge, surrounded by cozy cabins, equipped with electric lights, comfortable beds and other modern conveniences. They provide ideal headquarters for the lover of the great outdoors.

American Plan

\$5.00 per day per person; \$31.50 per week

Monthly rates on application

*"Low rail and coastal steamship fares via
Canadian Pacific"*



RADIUM HOT SPRINGS

VANCOUVER



HOTEL VANCOUVER

Vancouver is a beautiful city located on a natural land-locked harbor between Fraser River and Burrard Inlet. Many attractions, novel and distinctive, are offered the visitor—Stanley Park, Burrard Inlet, Capilano Canyon, Grouse Mountain and nearby Harrison Hot Springs. It is the gateway to Alaska, Hawaii, the Orient, Australia and New Zealand, and is served by the "White Empresses" of the Canadian Pacific fleet and the modern ships of the Canadian Australasian Line.

Here, commandingly situated on Granville Street, stands the Canadian Pacific Hotel Vancouver with its excellent appointments, delightful roof garden and modern facilities for the convenience of guests.

525 Rooms

Rates—(European Plan—Open All Year)

June 15th to September 15th

Single without Bath	—\$3.00	\$3.50	\$4.00		
Double without Bath	— 5.00				
Single with Bath	— 5.00	6.00	7.00	8.00	
Double with Bath	— 8.00	9.00	10.00	12.00	

Suites—\$15.00 up

Other Months

Single without Bath	—\$2.50	\$3.00			
Double without Bath	— 5.00				
Single with Bath	— 4.00	5.00	6.00	7.00	
Double with Bath	— 6.00	7.00	8.00	10.00	

Suites—\$12.00 up

Meals—A la Carte, also Table d'Hôte and combination meals at low, popular city prices.

Transfer 1/3 Mile

Between station, S.S. docks and hotel;

Trunk 50 cents each way.

Luncheon Headquarters—Gyro, Mondays; Rotary, Tuesdays; Kiwanis, Thursdays; Board of Trade, 1st and 3rd Thursdays; Electric, Fridays.

CANADA'S EVERGREEN PLAYGROUND

VICTORIA

The Empress Hotel—A charming 570-room hotel situated in a beautiful formal garden facing the placid waters of Victoria's Inner Harbor. Victoria, itself, the capital of British Columbia, is famous for its parks and flowers, and rare beauty reminiscent of Old England. An equable climate enables one to enjoy outdoor sports the year round. Golf, Tennis, Motoring, Hunting in season, and Fishing in nearby waters.

Rates—(European Plan—Open All Year)

June 15 to September 15

Room with Bath, single from \$5.00

Room with Bath, double (2 persons) . . from 8.00

Meals—A la Carte, also Table d'Hôte and combination meals at low, popular city prices.

Luncheon Headquarters—Gyro, Mondays; Kiwanis, Tuesdays; Rotary, Thursdays; Kinsman Club, semi-monthly on Thursdays.

Other Months

Room with Bath, single from \$4.00

Room with Bath, double (2 persons) . . from 6.00

SPECIAL WINTER VACATION RATES—EUROPEAN PLAN

In effect from November 1st to April 30th

Monthly Rate—For stay of one month or longer—

Room with Bath, single for as low as \$67.50

Room with Bath, double (2 people) as low as 90.00

Day Rate—

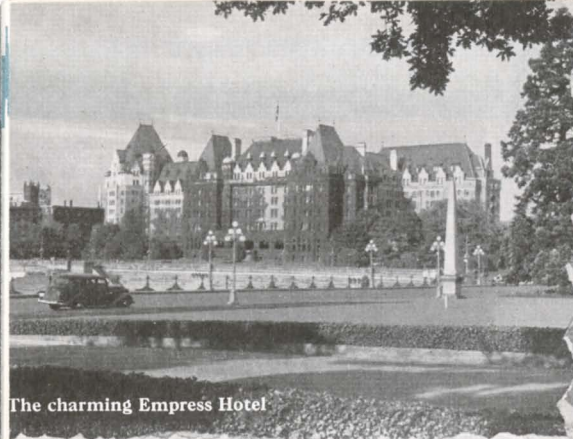
Room with Bath, single. from \$4.00

Room with Bath, double (2 people) from 6.00

(Discount of 10% on day room rates for a stay of two weeks or longer)

Transfer: Hotel and Can. Pac. Ry. S.S. docks. ¼ Mile; Hotel and Ocean docks 1½ Miles

Trunk 50 cents each way; Hand Baggage Free



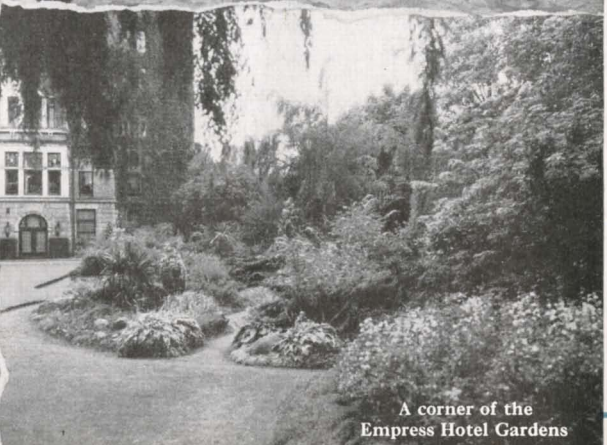
The charming Empress Hotel



Crystal Garden, adjoining the
Empress Hotel



The picturesque
Royal Colwood Golf Course



A corner of the
Empress Hotel Gardens

BRITISH COLUMBIA

CANADA'S EVERGREEN PLAYGROUND

Victoria, B.C. — Summer All Year

THE EMPRESS HOTEL

EMPRESS WINTER GOLF TOURNAMENT

In late February or early March each year, the Empress Winter Amateur Golf Tournament is held at which time the Sir Edward Beatty Challenge Cup, Chamber of Commerce Trophy, Victoria Rotary Rose Bowl and the Matson Inter-District Team Cup are competed for as well as other prizes.

The competition is open to all guests of the Empress Hotel and members in good standing of clubs in Victoria; the entrance fee being \$3.00 for ladies and \$6.00 for gentlemen.

Special weekly rates of \$22.50 single with bath and \$31.50 double with bath, European Plan, are offered for a stay of seven days during the tournament.

CHRISTMAS AND NEW YEARS IN VICTORIA

At Victoria, where flowers bloom in winter, golf is played throughout the year and other so-called summer sports are year-round pursuits. These include Tennis, Riding, Motoring, Yachting, Canoeing and the many other summer activities as well as swimming in the Crystal Garden's enclosed sea-water bathing pool.

You will not want to miss the Old English Yuletide, lavishly prepared for guests of the Empress Hotel—bringing in the Yule Log, the savoury Boar's Head—Christmas Carols—all the legendary frolics and fun of a genuine Old English Yuletide celebration.

Why not enquire now and make your reservation?

Full particulars may be obtained from any Canadian Pacific Agent, or from the Manager, Empress Hotel, Victoria, B.C.

CALGARY.

Hotel Palliser, Calgary, Alta. Another unit in the chain of Canadian Pacific Hotels . . . up-to-date and fireproof . . . commandingly situated in the centre of Calgary. Four hundred and eighty-six modern furnished spacious rooms that assure guests the maximum in comfort and rest. A delightful place to break your journey enroute to the Canadian Rockies and the Pacific Coast. (Calgary Stampede—July 5-10.)

Rates—(European Plan—Open All Year)

Single	\$4.00	\$5.00	\$7.00
Double	6.00	7.00	9.00
Suites	\$10.00 up		

Meals—A la Carte, also Table d'Hôte and combination meals at low, popular city prices.

Luncheon Headquarters—Kiwanis, Mondays; Rotary, Tuesdays; Gyro and Lions, Wednesdays; Probus, Thursdays.

Adjacent to C.P.R. Station. Trunk 25 cents each way.



HOTEL PALLISER



HARRISON HOT SPRINGS HOTEL
Harrison Hot Springs, British Columbia

Harrison Hot Springs Hotel

Harrison Hot Springs, B.C.
American Plan, Open All Year

Seventy-five miles east of Vancouver on the main line of the Canadian Pacific Railway (station, Agassiz, B.C.). Situated in a magnificent setting of lakes, snowpeaked mountains and the virgin forests of the Coastal Range, Harrison Hot Springs is Canada's premier spa. Hot mineral springs (sulphur and potash). Modern bath establishment under direction of a physician. The indoor swimming pool and all forms of sports and entertainment make this a popular vacation and health centre. (Operated by the Harrison Hot Springs Hotel Co., Limited).

Rates from \$5.00 to \$14.00 per day. Weekly, monthly and family rates on request.

For literature and reservations—any Canadian Pacific Agent, or write the Manager of hotel.

REGINA

Hotel Saskatchewan, Regina, Sask. 270 Rooms. One of the later additions to the Canadian Pacific chain. An imposing structure of limestone and brick, centrally located in Regina, to the south of Victoria Park. A commanding view of parks and tree-lined boulevards of the city may be obtained from the hotel windows. Its modern equipment, fine cuisine and high standard of service make it a delightful resting place in the heart of Canada's great West.

REGINA, the queen city of the Western Plains and the Capital of the Province of Saskatchewan, is well worth a visit.

Rates—(European Plan—Open All Year)

Single.	\$4.00	\$5.00
Double	\$6.00	7.00 8.00
Suites.	\$10.00	up

Meals—A la Carte, also Table d'Hôte and combination meals at low, popular city prices.

Luncheon Headquarters—Rotary, Kiwanis and Kinsman, Mondays; Gyro, Thursdays.

Transfer 1/3 Mile
Between Hotel and Union Station. Bus fare 25 cents each way, includes hand baggage. Trunk 25 cents each way.

Regina Exhibition, July 26th to 31st, 1937

"Canadian Pacific Telegraphs, Express and Travellers' Cheques"



HOTEL SASKATCHEWAN

WINNIPEG



ROYAL ALEXANDRA HOTEL

Royal Alexandra Hotel, Winnipeg, Man.
A modern and fireproof structure conveniently situated within a short distance of the business, shopping and theatrical districts of the city, and adjacent to the Canadian Pacific Railway Station. Its spacious public and private rooms, perfection of service and cuisine, combined with homelike comforts, make it an ideal stopping place for visitors to Winnipeg.

Adequate accommodation is available for conventions, meetings and banquets.

460 Rooms

Rates—(European Plan—Open All Year)

Single with Shower	\$3.00	Single with Bath	\$3.50	\$4.00	\$4.50	\$5.00
Double with Shower	4.50	Double with Bath	5.50	6.00	7.00	8.00
Suites	\$10.00 up					

Meals—A la Carte, also Table d'Hôte and combination meals at low, popular city prices.

There is also a Coffee Shop located in the hotel where meals are served A la Carte at popular prices or on the Club plan as follows:

Club Breakfast25	.40	.50
Club Lunch30	.45	.50
Club Dinner65

Covered passageway between Hotel and C.P.R. Station. Trunk 25 cents each way.

Luncheon Headquarters—Kiwanis, Tuesdays; Rotary, Wednesdays; Gyro, Thursdays.

TORONTO



Largest Hotel in the British Empire

ROYAL YORK HOTEL

TORONTO, ONT.

European Plan—1156 Rooms—Open All Year

Opposite the Union Station, with which it is connected by a well-lighted subway. Conveniently located to the shopping, theatre and business districts.

All outside rooms, and many private suites from two-room Bachelor suites to the luxurious Viceregal Suite. All rooms equipped with tub bath and shower—also radio.

Venetian Room, Tavern, lunch and dinner music, nightly supper dance and other musical and entertainment attractions.

Room with bath and shower, from \$4.00.

Popular priced à la Carte meals, also Table d'Hôte.

	Main Dining Room	Venetian Room
Club Breakfast50 and .75	.40 and .65
Lunch.	\$1.00 up	.65 up
Dinner	1.50 up	.65 up

Finest convention facilities on the Continent.

Subway passage between Hotel and Union Station.

Trunk 50 cents each way.

Luncheon Headquarters — Gyro and Optimist, Tuesdays; Kiwanis, Wednesdays; Rotary, Fridays.

KENORA, ONTARIO

DEVIL'S GAP LODGE

Kenora, Ont.

(Formerly known as a Chalet-Bungalow Camp)

Open June 18th to September 20th, 1937

Delightfully situated three miles south of Kenora, in the picturesque Lake of the Woods district. Provides every convenience and comfort—one and two-room bungalows with electric lights, hot and cold running water and toilet facilities; also de luxe bungalows with shower bath.

GOLF—At Kenora, an excellent nine-hole course is available to guests of Devil's Gap Lodge. A regular boat service for golfers is operated from the lodge.

SWIMMING—Diving-floats and spring-boards are situated within fifty yards of the lodge and an excellent beach provides pleasure with safety for the children.

FISHING—The Kenora district is famous as a fresh-water fishing ground. Guides are available for anglers in search of small mouth black bass, pickerel, maskinonge and trout.

GUIDES AND BOAT HIRE—Motor launches, row boats and canoes are obtainable at low rentals, and the picturesque waterways of the Lake of the Woods district are thus open to the guests of the lodge. Boatmen and guides may be hired for parties who wish to go far afield.



American Plan Rates—including Room and Meals.
Cabins with toilet and hot and cold running water.
No bath.

		Two weeks or longer
	Per Day	Per Day
Single	\$5.50	\$5.00
Double	9.00	8.00

Selected Type Cabins with Toilet and Shower

Single	\$6.00	\$5.50
Double	11.00	10.00

Transfer—Station to Dock by Taxi, and Dock to Lodge by motor launch—inclusive price \$1.00 per person each way. Hand baggage free. Trunk fifty cents each way.

FRENCH RIVER, ONTARIO

FRENCH RIVER

Chalet-Bungalow Camp

Open June 19th to September 20th, 1937



Situated in the heart of a rugged, beautiful "wilderness" country and yet only eight hours from the populated region surrounding Toronto.

GOLF—On Dry Pine Bay is a picturesque nine-hole course, 2,400 yards in length and in splendid condition.

SWIMMING—At the foot of the links is a beautiful sandy bathing beach, or swim and frolic from the camp float and diving board.

FISHING—Black bass of both small and large mouth varieties abound. Savage maskinonge and pickerel are plentiful—fishing season for both bass and maskinonge is from July 1st to October 15th. License for non-residents, \$5.00.

GUIDES AND BOAT HIRE—Guides are available at the rate of \$4.75 a day which includes all meals. All such money transactions are made between the guest and the Manager of the Camp.

Boat and canoe livery is available at the camp as well as first class launches.

PINE RAPIDS CAMP—A subsidiary of French River Camp. It is reached by motor launch or canoe, and is of especial interest to fishermen, being in the heart of the best bass and maskinonge fishing.

Freedom in dress and wearing apparel helps to make your vacation at the camp complete—no extensive wardrobe is necessary, saunter around in your outing costume if you desire.

Rates

American Plan

\$5.50 per day per person

\$35.00 per week

*"Canadian Pacific Rail and Steamship
Services Span the World"*

Q U E B E C

THE CHATEAU FRONTENAC

725 Rooms

Commandingly situated overlooking the St. Lawrence River, in the ancient city of Quebec. Built in the style of a sixteenth century French chateau, the Chateau Frontenac is fireproof throughout and modern in equipment and service.

Promenade on Dufferin Terrace—tour Lower Town with the narrowest streets in America.

Golf. Visit Ste. Anne de Beaupré, the rival of Lourdes on this side of the Atlantic.

WINTER SPORTS IN QUEBEC—Quebec is attractive not only in the summer but throughout the year. Under the guidance of an experienced sports director, visitors to this winter sports

headquarters of the continent enjoy exhilarating sports, including skiing, skating, tobogganing on the Chateau's triple-chute slide, sleighing, curling, snowshoeing, ice hockey, climaxed in February with the Dog Derby and the Dog Derby Ball. Join one of the gay parties at the hotel this winter.

Transfer—Hotel and Station ½ Mile
Hotel and Ocean Docks. 1 Mile
Trunks 50 cents each way.

Rates—Single with Bath from \$5.00
Double with Bath from. 9.00
(European Plan—Open All Year)

Luncheon Headquarters—Rotary, Tuesdays; Kiwanis, Thursdays.



NEW BRUNSWICK

The Algonquin Hotel—built in charming Old English style, it is situated on a promontory overlooking the St. Croix River and Passamaquoddy Bay. The Algonquin is the social centre of the picturesque little town of St. Andrews, close to the State of Maine.

Two Hundred and Thirty comfortable, homelike rooms.

Two excellent Golf Courses—an 18-hole and a 9-hole—live up to the Scottish tradition in turf, form, caddies and professional attendance—golf at its best.

Swim in sheltered Katy's Cove, or lounge on the beach and enjoy the sunshine.

Tennis Courts—Putting Greens—Fishing—Sailing—Dancing—up-to-date talkies.

Single Room without Bath, and Meals, \$9.00 and \$10.00.

Double Room without Bath, and Meals, \$8.00 and \$9.00 per person.

Single Room with Bath, and Meals, \$10.00, \$11.00 and \$12.00.

Double Room with Bath, and Meals, \$9.00, \$10.00 and \$11.00 per person.

American Plan

(Open June 26th to September 7th, 1937)

Transfer. 1 Mile

Bus fare 50 cents each way, including hand baggage. Trunk 50 cents each way.



McADAM HOTEL
McAdam, N.B.
American Plan—Open All Year

ALGONQUIN HOTEL
St. Andrews-by-the-Sea, N.B.

DIGBY



THE PINES HOTEL
AND A CORNER OF THE POOL

American Plan

Single Room and Meals, \$8.00, \$9.00 and \$10.00 Double Room and Meals, \$7.00, \$8.00 and 9.00 per person.

Weekly and Monthly Rates for families quoted on request

All rooms equipped with bath

Open June 25 to September 11, 1937

Transfer

$\frac{3}{4}$ Mile

Bus fare 25 cents each way, including hand baggage. Trunk 50 cents each way.

The Pines Hotel, near the quaint little fishing town of Digby, Nova Scotia. Comfortable rooms, each with private bath; also 25 cottages for those who prefer home privacy with efficient hotel service—175 Rooms.

If you are tired and looking for something "different" you will enjoy the unique charm of The Pines and the picturesque scenery.

Play golf on the hotel's championship course, ride horseback, motor, swim in the warmed salt water glass-screened swimming pool. Play tennis, dance or just relax and rest in the health-giving air; all will be equally enjoyable.

Ample garage accommodation is available for guests' cars.

YARMOUTH

Lakeside Inn—About a mile from Yarmouth, N.S., delightfully situated overlooking Milo Lake, is the Lakeside Inn, a cozy Old English style hostelry. It is on the main highway to Halifax and offers an ideal opportunity for rest and recreation.

The Old English atmosphere of Yarmouth and the excellent service and cuisine of Lakeside Inn make it an ideal holiday resort. 70 modernly furnished rooms.

Tuna fishing, golf, tennis, yachting, speed boating, swimming and horseback riding are some of the pleasures you may enjoy. Cottages can be rented nearby, thus enabling you to have home privacy combined with all hotel privileges.

American Plan

Single Room and Meals, \$6.00 and \$7.00

Double Room and Meals, \$5.00 and \$6.00 per person.

Weekly and Monthly Rates for families quoted on request.

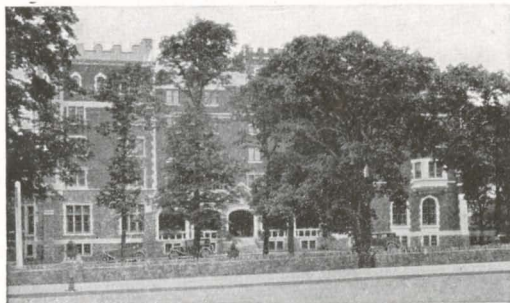
All rooms equipped with bath

Open June 28 to September 7, 1937
Transfer 2½ Miles
Bus fare 50 cents each way, including hand baggage. Trunk 50 cents each way.



LAKESIDE INN

KENTVILLE



CORNWALLIS INN

Cornwallis Inn, Kentville, N.S., in the Land of Evangeline, is a new and outstanding type of hotel where you will find every comfort and convenience, every facility for rest and recreation. There is a fine golf course on the outskirts of the town.

Kentville is the centre of the Annapolis Valley, and many interesting excursions into this beautiful countryside may be taken from the Cornwallis Inn. See the numerous Acadian relics and catch something of the romance of Old Acadia. Visit Grand Pré and the orchard-decked valleys of Cornwallis and Gaspereau.

Single Room and Meals—\$6.00, \$7.00 and \$8.00.

Double Room and Meals—\$5.00, \$6.00 and \$7.00 per person.

90 rooms all equipped with bath

American Plan—Open All Year

Headquarters for Rotary Dinner each Monday; Gyro Luncheon, 2nd and 4th Fridays.

Transfer ½ Mile

Bus fare 25 cents each way, including hand baggage.

Trunk 50 cents each way.

“Canadian Pacific—World’s Greatest Travel System”

HALIFAX

Lord Nelson Hotel, in Halifax (operated by the Lord Nelson Hotel Company), faces the Public Gardens and is the centre of the social, recreational and business life of Halifax. A modern hostelry, the Lord Nelson expresses perfectly the maritime atmosphere of Halifax, and is conveniently situated on the main motor routes through the city.

Fishing, Swimming, Yachting, Boating, Golf, Tennis and Motoring are among the many sports available.

Rates

Single Room with Bath, \$3.00 up

Double Room with Bath, \$5.00 up

Bed Sitting Room and Bath, \$5.00 up

Suites, \$8.00, \$10.00 and \$12.00

European Plan—Open All Year

Meals—A la Carte, also Table d'Hôte, at popular prices.



©Edson Graham

LORD NELSON HOTEL
(Operated by Lord Nelson Hotel Co.)

For further information and reservations communicate with Hotel Manager
or nearest Canadian Pacific agent.



Chateau Lake Louise