



The Chateau Frontenac
in Historic Quebec



A MODERN Convention Hostelry

with CENTURY-OLD traditions

COMMANDINGLY situated in Old Quebec, overlooking the mighty St. Lawrence River, the CHATEAU FRONTENAC occupies the site of the old Chateau St. Louis, former residence of the governors of New France. Yet, while the Chateau draws its inspiration from these century-old traditions—while it is built in the style of an eighteenth century French chateau, its standards of comfort and convenience are the most modern and its convention service has won universal acclaim. For the tourist or the convention delegate it is the appropriate headquarters.

Quebec's healthy climate may well be numbered among its foremost attractions, no matter what season is considered. Come in springtime—when the warmest of sunshine lies in vivid splashes on old walls and roofs—when mild breezes stir blossom-laden trees in convent gardens—and you will say that this is Quebec's most delightful season. Or again, come in summertime to enjoy warm, breeze-tempered days and cool refreshing nights—or in autumn when the air is tonic-like and bracing—and you will think these just as delightful. Then, if you should come again in wintertime—to have the crisp, never-too-cold dryness of the air set your blood atingle, put new glow into your cheeks, new vigor into your muscles—you will admit all are best!

QUEBEC...

Historical . . . Picturesque

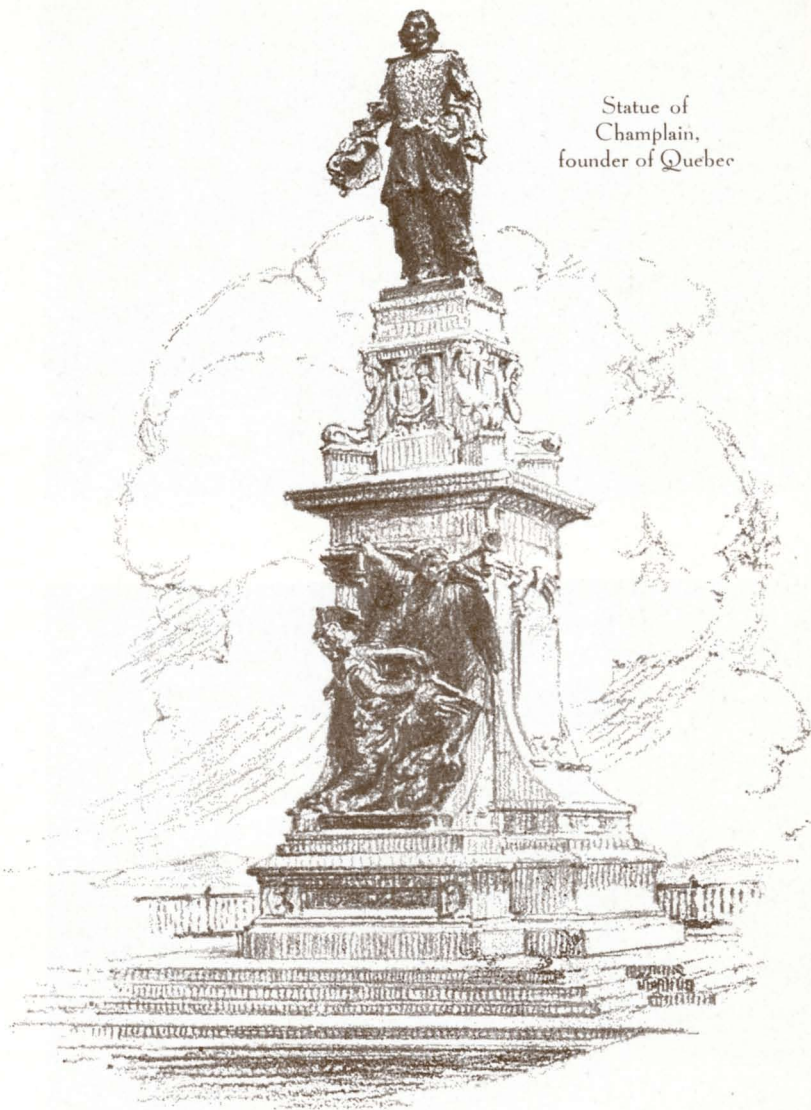
QUEBEC, from whatever viewpoint you consider it, will impress and allure you. Founded by Samuel de Champlain in 1608, Quebec is linked in history with the cities of the west and of the United States, just as it is linked today by excellent transportation facilities to all parts of Canada and the United States. From her portals sallied forth Joliet and Marquette, who in 1673 discovered the Mississippi; La Salle, who took possession of it in the name of the King of France; de Bienville, founder of New Orleans; La Motte Cadillac, builder of Detroit; Du Lhut, founder of Duluth; and de La Verendrye, who first penetrated to the foothills of the Rockies. Historically, Quebec is one of the most interesting and romantic cities in America.

Geographically, Quebec occupies truly an enviable position. Situated on the heights and down the slopes of Cape Diamond, jutting into the broad St. Lawrence one hundred and seventy-two miles below Montreal, Quebec is a veritable dream-city: with narrow, winding streets, ancient walls and houses and venerable churches, all eloquent of past glories and accomplishments. Up hill and down hill it goes, with a Gallic abandon and the unexpected always meeting you around the corner. Its inhabitants will tell you that their city is the most beautiful in the world, not boastfully but with that assurance that comes from implicit belief. Certainly, it is one of the most picturesque!

Today, Quebec is a charming city of 142,000 inhabitants—most of whom are French-speaking. Easy of access by railway, steamship lines and motor roads, it is a bustling sea-port and a thriving industrial centre. And yet, side by side with this modern development, it has retained much of the distinction of an Old-World city. The CHATEAU FRONTENAC—the social centre of Quebec—combines the grace of a French chateau with highest modern hotel standards, and emphasizes that picturesque atmosphere!

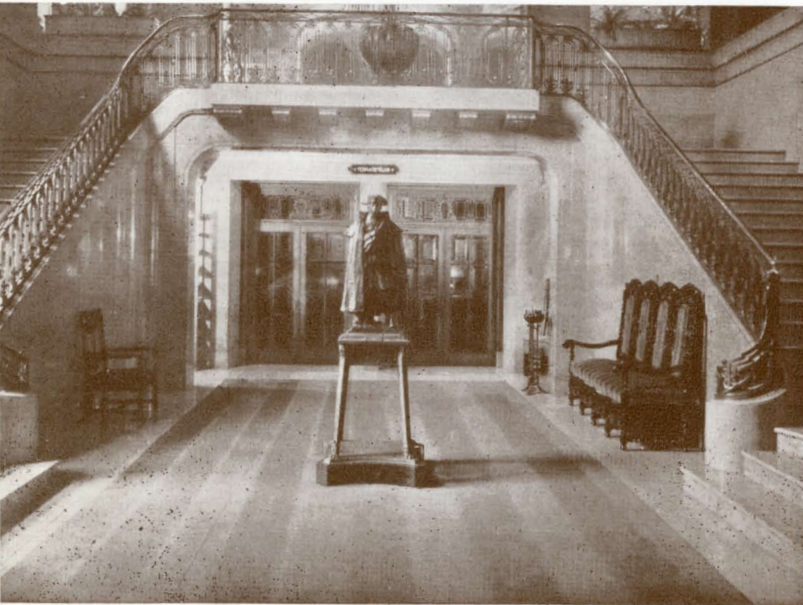
Thus does this ancient, picturesque, friendly city of Quebec attract increasing numbers of visitors each year from all parts of the world!

Statue of
Champlain,
founder of Quebec





The Terrace Cafe



Grand Stairway and Entrance to Terrace Club

The CHATEAU

There are many places in this wide, colorful world where a castle would look well silhouetted against the sky—and where mighty 2,000-mile rivers sweep onward to the sea, laden with historical as well as commercial treasures. But where else can you find history, scenery and architecture blending together to make such an incomparable creation as the Chateau Frontenac—enthroned on an eminence above the great St. Lawrence? And unlike other castles, this one is *yours* to live in, and to be the scene of your convention... little wonder, then, that each year thousands of travellers and convention delegates make it their headquarters!

The Chateau Frontenac (named after Count de Frontenac, one of the greatest governors of Quebec during the French Regime) is one of the famous hostelrys of the world. Of fireproof construction throughout, its size alone would give it dominance anywhere—with 678 rooms, majority with bath, and capacity to house hundreds of guests. Its equipment is thoroughly modern, and its service unsurpassed. Four splendid suites occupy the Round Tower, facing Dufferin Terrace—the Dutch, Habitant, Colonial and Chinese—each with large sitting room, double bedroom and bath. There are also sixteen fine suites in the great Central Tower, with a similar arrangement of sitting rooms, bedrooms and baths.

The Chateau is famous, too, for its cuisine—and for wine cellars stocked to cater to the taste of the most discriminating epicure. From the luxurious lounges and salons—the St. Lawrence, Jacques Cartier and Champlain—from the Library, and other spacious rooms, a fine view of the city and the St. Lawrence River may be obtained.

FRONTENAC

• Every modern convenience is available at the Chateau Frontenac. Here there is a charming social life with congenial fellow guests. Here there is dancing every evening (except Sunday) to the strains of an entrancing orchestra, and occasional concert hours.

• The Chateau Frontenac towers above Dufferin Terrace, the quarter-mile board walk overlooking the St. Lawrence. The Terrace itself surmounts a section of the old ramparts and extends from the Champlain Monument in the Place d'Armes to the base of the great citadel. In the Governor's Gardens, south of the Chateau, is the Wolfe and Montcalm Monument.

• From the Chateau walk along Dufferin Terrace—a favorite gathering place in the evening. Listen to the band playing martial airs in the dusk while all Quebec strolls by. On the right are the Citadel towers; down below is Lower Town with its high-roofed, close-huddled houses; Little Champlain Street with its break-neck stairs; and that historic church, Notre-Dame-des-Victoires. Before you, in the mighty St. Lawrence, may be seen one of the swiftest and most luxurious of trans-Atlantic liners, the world cruiser Canadian Pacific flagship "Empress of Britain," 42,350 tons gross register, starting a record-breaking crossing to British and Continental ports. To the right, at Wolfe's Cove, is the massive dock at which this ship moors. In addition to the "Empress" ships the eye is delighted with the twinkling lights of the ever-popular Canadian Pacific "Duchess" liners enroute to or from Montreal, and the ferry boats crossing to and from Levis. In the distance is discernible the interesting coast line of the beautiful Isle of Orleans. "And so to bed," in the homelike atmosphere of the Chateau Frontenac, where there is always a joyous welcome.



Salon de Verchères



The Habitant Suite



Main Lobby and Front Office



Convention Hall

CONVENTION

Facilities

Conventions held at the CHATEAU FRONTENAC recall the traditions of the past . . . inspiring energy in the present . . . and assuring progress in the future.

• • •

DIRECTORY OF SERVICES

TERRACE FLOOR—Coffee Shop, Barber Shop, Billiard Room, Shoe Shine, Summer Terrace Cafe, Tea Room, Tavern, Ladies' Hair-dressing and Manicure Parlor, Bank of Montreal, Broker's Office.

OFFICE FLOOR—Main Office, Information, Terrace Club, Jacques Cartier Room, Library, Champlain Room, St. Lawrence Room, Carriage Agent, Check Room, Church Directory, Ladies' Dressing Room, News Stand, Public Stenographer, Sleeping Car and Ticket Office, Telegraph Office, Telephones, Writing Room, Lounge, Masseuse and Shops.

FIRST FLOOR—Main Dining Room, Drawing Room, Salon Madeleine. de Verchères, Foyer, Lounge, Ball Room, Private Dining Rooms, Children's and Servants' Dining Room.

HOUSE PHYSICIAN in attendance.

PUBLIC SPACES, MEETING ROOMS, DINING ROOMS *and* BANQUET ROOMS

FLOOR	PUBLIC ROOMS	AREA	SEATING CAPACITIES		
			CONVENTION	BANQUET	DINING
Terrace	TERRACE TEA ROOM.....	1,380 sq. ft.	60
"	TERRACE CAFE.....	2,068 "	115
"	COFFEE SHOP.....	2,444 "	136
Office	JACQUES CARTIER ROOM....	2,272 "	250	200	150
"	TERRACE CLUB.....	2,240 "
First	BALL ROOM AND FOYER....	6,545 "	900	700	450
"	BALL ROOM GALLERY.....	760 "	127
"	MAIN DINING ROOM.....	6,701 "	..	600	500
"	SALON DE VERCHÈRES.....	2,419 "
Second	COMMITTEE ROOM.....	1,475 "	100 or number smaller rooms.		

Transfer rates between Station, Ferry, Ocean Docks and Chateau Frontenac

Cabs, Motor Bus, Taxis (and Sleighs in Winter).

- (1) Palais Union Station and Chateau Frontenac: Distance— $\frac{1}{2}$ mile.
By Motor Bus—25c. per person, including hand baggage.
By Taxi—35c. for one or two persons, including hand baggage.
- (2) Chateau Frontenac and Wolfe's Cove: Distance— $2\frac{1}{2}$ miles.
By Motor Bus—50c. per person, including hand baggage.
By Taxi—70c. for one or two persons, including hand baggage.
- (3) Chateau Frontenac and Canada S.S. Lines Dock: Distance— $\frac{1}{4}$ mile.
By Motor Bus—25c. per person, including hand baggage.
By Taxi—35c. for one or two persons, including hand baggage.
- (4) Chateau Frontenac and Levis Ferry: Distance— $\frac{1}{4}$ mile.
By Taxi—35c. for one or two persons, including hand baggage.

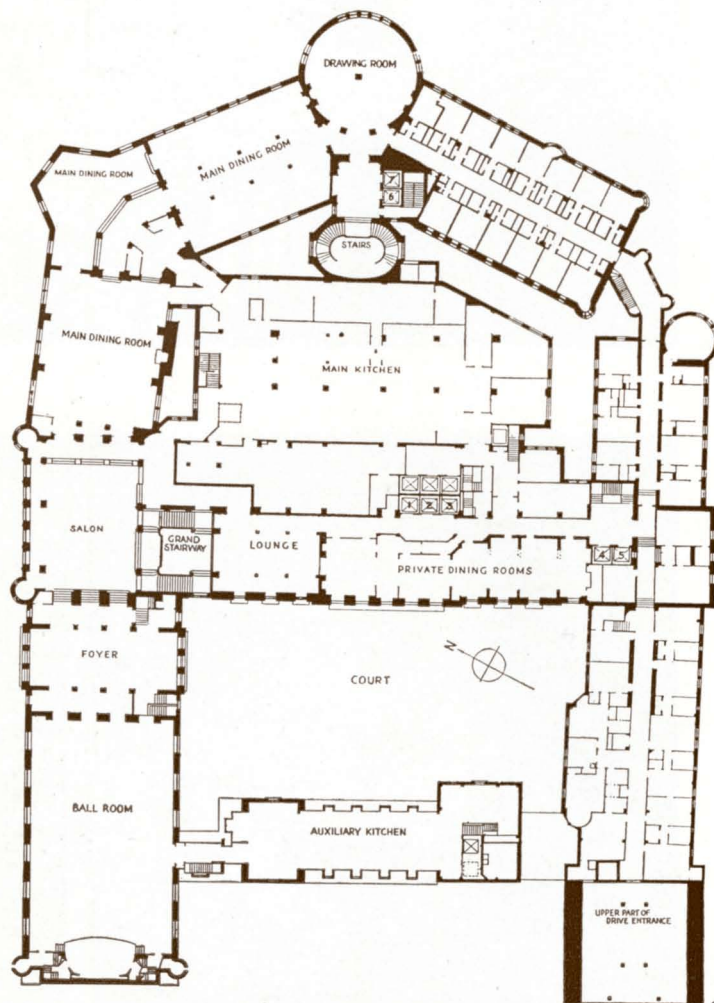


A Typical Bedroom



The Main Dining Room

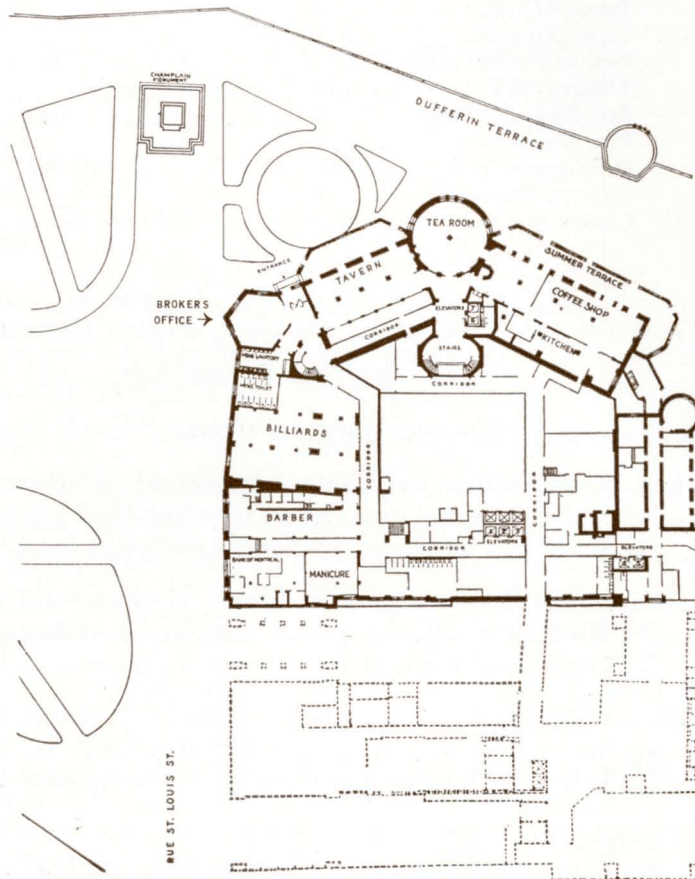
Some Typical Floor Plans



FIRST FLOOR

The CHATEAU

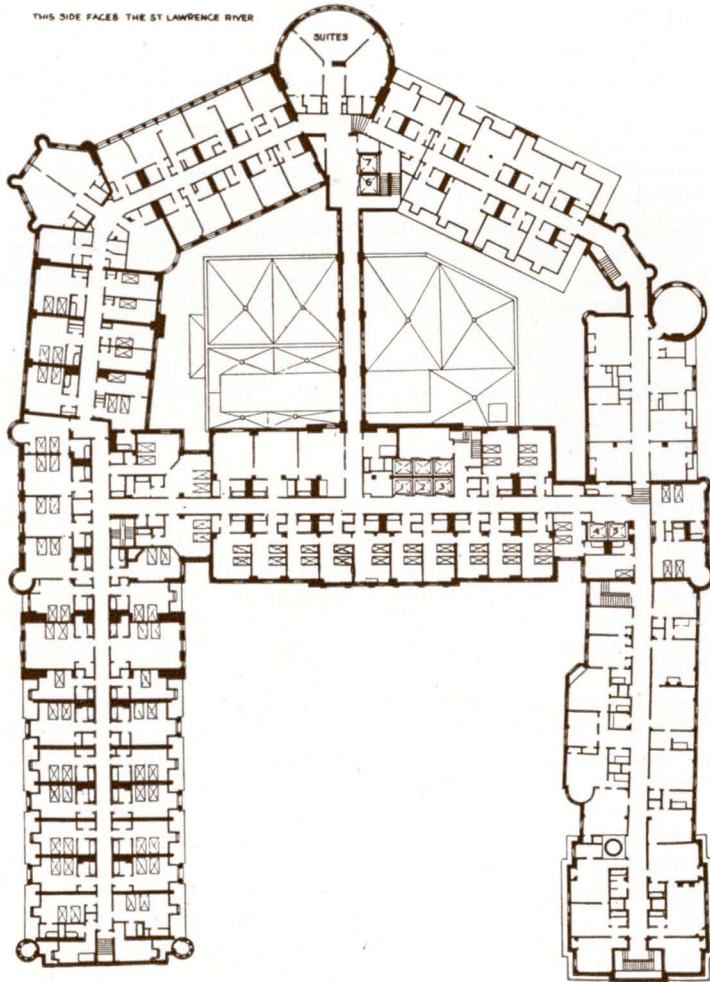
THIS SIDE FACES THE ST. LAWRENCE RIVER



TERRACE FLOOR
ON THE DUFFERIN TERRACE LEVEL

FRONTENAC

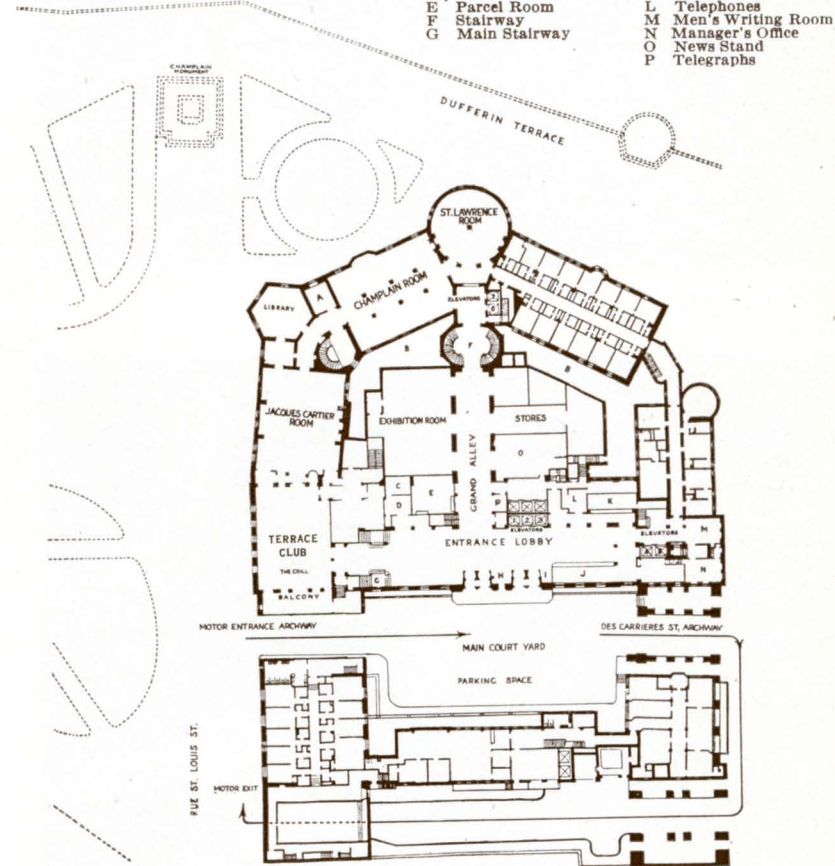
THIS SIDE FACES THE ST. LAWRENCE RIVER



TYPICAL BEDROOM FLOOR

Some Typical Floor Plans

THIS SIDE FACES THE ST. LAWRENCE RIVER



OFFICE FLOOR
FIRST FLOOR ABOVE DUFFERIN TERRACE

SUMMER *and*

GOLF—Guests of the Chateau Frontenac have the privilege of playing on two excellent 18-hole courses.

*At the Kent Golf Club
(6,121 yards)*

Rates per day.....	\$1.50
Rates per week.....	9.00
Rates per month.....	25.00
Season membership.....	50.00

*At the Royal Quebec Golf Club
(6,456 yards)*

Rates per day.....	\$2.00
Rates per week.....	10.00
Rates per month.....	40.00
Season membership.....	80.00

These courses are set amid beautiful natural surroundings high above the St. Lawrence, and commanding inspiring views of the River. The Kent Golf Club is located at Montmorency Falls (7 miles from the Chateau Frontenac) and the Royal Quebec Golf Club at Boischatel, a mile farther away. They can be conveniently reached either by electric line or motor car over a good road.

TENNIS—Playing privileges available on the well-maintained court owned by the Chateau Frontenac.

BADMINTON—Playing privileges available on privately owned and completely equipped courts.

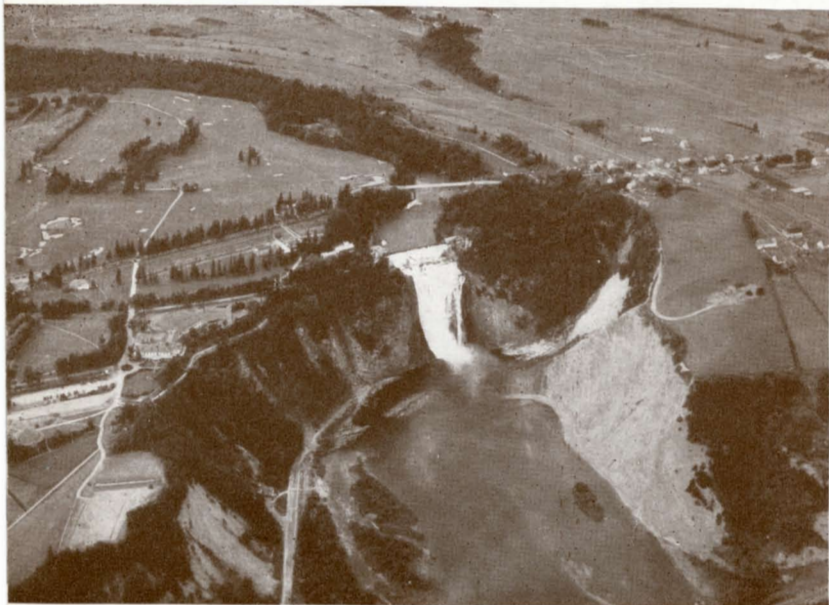
RIDING—Well-trained saddle horses can be hired for a reasonable charge per hour.

MOTORING—High grade touring cars for private service can be hired at moderate rates through Carriage Agent in the hotel lobby. The countryside around Quebec with its romantic charm and wealth of historic associations presents opportunities for many delightful motor trips.

FISHING AND HUNTING—Quebec is a convenient base from which to reach a vast extent of wild forested country offering exceptional fishing and hunting attractions. Capital trout fishing is furnished in countless lakes and streams, in addition to which the gamy ouananiche or land locked salmon yields remarkably fine sport in some of the waters of the Lake St. John district. In the line of big game, moose and deer are generally plentiful with good chances for black bear in certain localities. Comfortable cabin camps equipped to meet usual requirements of the sportsman have been established at various points throughout this territory. Competent guides can be arranged for and canoes and outfits supplied.



Kent Golf Links



Montmorency Falls

WINTER *Sports*

Quebec has come to be known as the winter sports headquarters of the continent—no other city having the natural advantages it possesses for winter sports, including the necessary terrain and climate. Of course, the Chateau Frontenac is the logical centre for this winter sports life. Here are some of the features:

SPORTS OFFICE—A capable and experienced staff of experts for the care and convenience of guests, are located at Winter Sports Office of the Hotel.

TOBOGGANING—A triple-chute slide extending the entire length of Dufferin Terrace, from the King's Bastion on the Citadel to the Champlain Monument, directly in front of the hotel.

SKATING—The outdoor skating rinks for general and figure skating, are located on Dufferin Terrace within a few feet of the hotel. Guests of the Chateau Frontenac are entitled to the use of these rinks without charge.

SKI-ING—For the beginner there is a splendid variety of hills within a mile of the Hotel, ranging from even steady inclines to steep swift slopes. There are also some very interesting and picturesque trails within a short distance of the hotel. The services of the Chateau Frontenac ski instructors of international reputation are available for guests desiring instruction.

Parties are regularly organized to such places as Montmorency Falls, Beaufre, Notre-Dame des Laurentides and other favorite ski-ing localities within a few miles of Quebec.

SKI-JORING—There is probably no more thrilling a Winter Sport than Ski-joring. For those sufficiently advanced in the art of ski-ing, arrangements can be made to secure suitably trained Ski-joring ponies properly harnessed. A specially-equipped automobile is also available for this sport.

SNOWSHOEING—One of the oldest of Canadian Winter Sports is still very popular in Quebec. The many snowshoe clubs in Quebec hold tramps, races and social functions frequently at which guests of the Hotel are always welcome.

SKI-JUMPING—Contests are regularly held at the Ski-Jump which is situated close to the Hotel.

HOCKEY MATCHES—Well contested games, both professional and amateur, are played almost every night in Quebec.

SLEIGH DRIVES—There are many beautiful and interesting drives of historical interest in the vicinity.

CURLING—A curling rink is situated adjacent to the Hotel. Guests are cordially invited to use this rink and become acquainted with the Auld Roarin' Game.

There are several very good curling clubs in the City of Quebec. Guests of the Chateau Frontenac who are interested in Curling will always be welcome at any of these clubs.



Tobogganing at the Chateau



Skating Rink



1. St. Lawrence River
2. The Citadel.
3. Dufferin Terrace.
4. Wolfe and Montcalm Monuments.
5. The Chateau Frontenac.
6. Champlain Monument.
7. Post Office.
8. Place d'Armes.
9. Court House.
10. Anglican Cathedral.
11. Convent Ursuline
12. St. Louis Gate.
13. Cross of Sacrifice.
14. Drill Hall.
15. Parliament Building.
16. Museum.
17. Wolfe's Cove.

POINTS of INTEREST:

Within the city limits—The Plains of Abraham where Montcalm's troops were defeated by the British under Wolfe; Montcalm's reputed headquarters on St. Louis St.; Governor's Garden and the Wolfe-Montcalm Monument; the Seminaire de Quebec founded in the 17th century by Laval. Place d'Armes Square, Cardinal's Palace, City Hall, Parliament Buildings; St. Louis, Kent and St. John gates; Franciscan Sisters (White Nuns) Chapel; Wolfe's Monument, Martello Tower; Spencerwood (Lieutenant-Governor's residence); the Citadel and fortifications; the Ramparts; Laval University, Ursuline Convent; Notre-Dame-des-Victoires Church, erected in 1688; Sous-le-Cap—the narrowest street in North America; Little Champlain Street and the Break-Neck steps, etc. Outside the city limits—Montmorency Falls and Kent House; Ste. Anne de Beaupre and its famous shrine; Cap Rouge and Quebec Bridge; Sillery, with its old Jesuit mission; Indian village of Lorette, Wolfe's Cove, Lake Beauport, Lake St. Charles, Isle of Orleans, etc.

Quebec

CANADIAN PACIFIC

Spans the WORLD

39% Less Ocean to Europe

Air-Line Route... Frequent sailings via the short St. Lawrence Seaway from Montreal and Quebec (summer)... (Saint John, N.B., and Halifax, N.S., in winter)... to and from British and Continental ports... the majestic Empress of Britain and other great Empress, Duchess, and "Mont" ships of the CANADIAN PACIFIC fleet set new standards of trans-Atlantic service. *Fast Freight Service* provided by Empress, Duchess, "Mont" liners and "Beaver" cargo ships.

Canada and United States

The Canadian Pacific Railway (comprising 21,235 miles of operated and controlled lines) reaches from the Atlantic to the Pacific, across Canada and into the United States. The main line, Montreal to Vancouver, 2,886 miles, passes through the heart of the famous Canadian Rockies, with their crowning jewels of Banff, Lake Louise and Emerald Lake, unsurpassed as vacation resorts. Modern and comfortable transcontinental and local passenger train services link the important cities, industrial sections, agricultural regions and holiday resorts. Fast and efficient freight service. Convenient coastal and inland steamship services. Builds and operates own sleeping, dining and parlor cars.

Alaska... Frequent service by Canadian Pacific "Princess" liners from Vancouver (connections from Victoria and Seattle) to Skagway and return via sheltered "Inside Passage." *Great Lakes*... Canadian Pacific inland steamships sail semi-weekly during the summer months between Port McNicoll and Fort William via an attractive lake and river route.

Honolulu, Orient and South Seas

Regular sailings between Vancouver, Victoria and Yokohama, Kobe, Nagasaki, Shanghai, Hong Kong, Manila providing convenient passenger and freight schedules.

Direct Express Route to Orient... swift sister ships, Empress of Asia and Empress of Russia... Yokohama in 10 days flat!

Via Honolulu... The mighty Empress of Japan and her running mate, Empress of Canada, make Honolulu in 5 days, Yokohama in just 8 days more.

South Seas... Canadian Australasian Line fast modern liners to Honolulu, Fiji, New Zealand and Australia.

Round-the-World

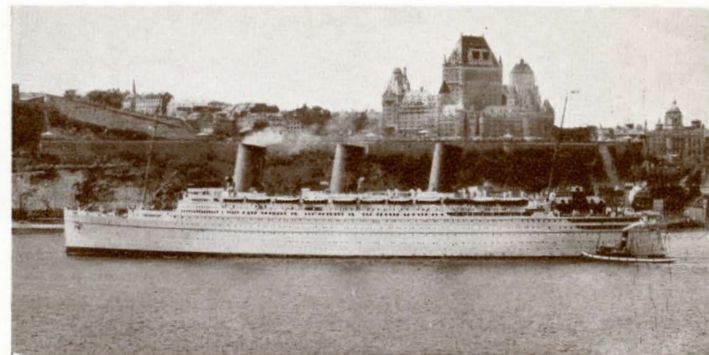
Annual World Cruise on the famous Empress of Britain, perfectly timed to see world-renowned beauty spots at their best... Other attractive cruises to West Indies, Norwegian Fjords, Russia, etc.

Independent Round-the-World Tours, choice of over 200 itineraries... 179 offices maintained throughout the world to assist CANADIAN PACIFIC patrons.

Hotels, Express, Communications

Hotels... A chain of comfort across Canada from Atlantic to Pacific... Fifteen hotels in leading cities and resorts, including Chateau Frontenac, Quebec; Royal York, Toronto; Banff Springs; Empress Hotel, Victoria... Eight rustic lodges in the Canadian Rockies and at Ontario fishing resorts.

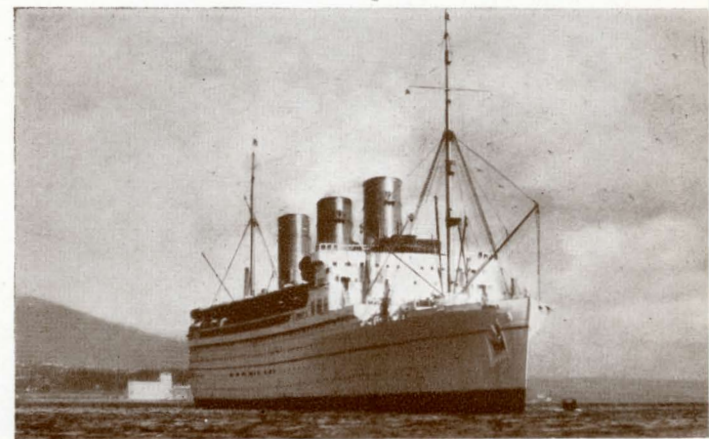
Communications and Express... owned and operated by the CANADIAN PACIFIC... trans-Canada Service... world-wide connections... travellers' cheques—good the world over.



"EMPRESS OF BRITAIN" AND CHATEAU FRONTENAC HOTEL, QUEBEC



CANADIAN PACIFIC TRANSCONTINENTAL TRAIN NEAR BANFF



"EMPRESS OF JAPAN"—LARGEST AND FASTEST SHIP ON THE PACIFIC

Canadian Pacific Agencies Throughout the World

Canada and United States

ATLANTA, Ga.	404 C. & S. Nat'l Bk. Bldg.
BANFF, Alta.	Canadian Pacific Station
BOSTON, Mass.	405 Boylston St.
BUFFALO, N.Y.	22 Court St.
CALGARY, Alta.	Canadian Pacific Station
CHICAGO, Ill.	71 East Jackson Blvd.
CINCINNATI, Ohio	201 Dixie Terminal Bldg.
CLEVELAND, Ohio	1010 Chester Ave.
DALLAS, Texas.	1212 Kirby Bldg.
DETROIT, Mich.	1231 Washington Blvd.
EDMONTON, Alta.	Canadian Pacific Bldg.
FORT WILLIAM, Ont.	108 South May St.
GUELPH, Ont.	30 Wyndham St.
HALIFAX, N.S.	413 Barrington St.
HAMILTON, Ont.	4 King St. West
HONOLULU, T.H.	Theo. H. Davies & Co.
INDIANAPOLIS, Ind.	Merchants Bank Building.
JUNEAU, Alaska.	V. W. Mulvihill.
KANSAS CITY, Mo.	201-2 Waldheim Bldg.
KETCHIKAN, Alaska.	Edgar Anderson.
KINGSTON, Ont.	180 Wellington St.
LONDON, Ont.	417 Richmond St.
LOS ANGELES, Cal.	621 South Grand Ave.
MILWAUKEE, Wis.	1014 Warner Theatre Bldg.
MINNEAPOLIS, Minn.	611 2nd Ave. South.
MONTREAL, Que.	201 St. James Street W.
MOOSE JAW, Sask.	Canadian Pacific Station.
NELSON, B.C.	Baker & Ward Sts.
NEW YORK, N.Y.	Madison Ave., at 44th St.
NORTH BAY, Ont.	87 Main Street West.
OMAHA, Neb.	803 W.O.W. Building.
OTTAWA, Ont.	83 Sparks St.
PETERBORO, Ont.	343 George St.
PHILADELPHIA, Pa.	1500 Locust St.
PITTSBURGH, Pa.	Koppers Bldg., 444 Seventh Ave.
PORT ARTHUR, Ont.	Canadian Pacific Station.
PORTLAND, Ore.	626 S.W. Broadway.
PRINCE RUPERT, B.C.	W. L. Coates.
QUEBEC, QUE.	Palais Station.
REGINA, Sask.	Canadian Pacific Station.
SAINT JOHN, N.B.	40 King St.
ST. LOUIS, Mo.	418 Locust St.
ST. PAUL, Minn.	Soo Line, Fourth and Cedar Sts.
SAN FRANCISCO, Cal.	152 Geary St.
SASKATOON, SASK.	115 Second Ave.
SAULT STE. MARIE, Ont.	529 Queen St.
SEATTLE, Wash.	1320 Fourth Ave.
SHERBROOKE, Que.	91 Wellington St. North.
SKAGWAY, Alaska.	L. H. Johnston.
SPOKANE, Wash.	Old National Bank Bldg.
TACOMA, Wash.	1113 Pacific Ave.
TORONTO, Ont.	Canadian Pacific Bldg.
VANCOUVER, B.C.	434 Hastings St. West.
VICTORIA, B.C.	1102 Government St.
WASHINGTON, D.C.	14th & New York Ave., N.W.
WINDSOR, Ont.	Cor. Ouellette Ave. & Chatham St.E.
WINNIPEG, Man.	Main and Portage.

Europe

ANTWERP, Belgium	Place de Meir. 42
BELFAST, Ireland	24 Donegall Place.
BIRMINGHAM, Eng.	4 Victoria Square.
BRISTOL, Eng.	18 St. Augustine's Parade.
BRUSSELS, Belgium	98 Blvd. Adolphe-Max.
GLASGOW, Scotland	25 Bothwell St.
HAMBURG, Germany	Alsterdamm 9.
LIVERPOOL, Eng.	Pier Head.
LONDON, Eng.	Trafalgar Square, W.C. 2 103 Leadenhall St., E.C. 3.
MANCHESTER, Eng.	43 Cross St.
PARIS, France.	24 Boulevard des Capucines.
ROTTERDAM, Holland	Coolsingel No. 91.
SOUTHAMPTON, Eng.	Canute Road.

Asia

HONG KONG.	Opposite Blake Pier.
KOBE, Japan.	7 Harima-machi.
MANILA, P.I.	14 Calle David, Roxas Bldg.
SHANGHAI, China.	The Bund and Peking Road.
TOKYO, Japan.	No. E-7 No. 2 Sanchoime, Marunouchi.
YOKOHAMA, Japan.	21 Yamashita-cho.

Australia, New Zealand, Fiji

N. R. McMORRAN, Traffic Agent for Australia, Can. Pac. Ry.,
Union House, Sydney, N.S.W.

A. W. ESSEX, Traffic Agent for New Zealand, Can. Pac. Ry.,
32-34 Quay Street, Auckland, N.Z.

ADELAIDE, Aus.	Macdonald, Hamilton & Co.
AUCKLAND, N.Z.	Union S.S. Co. of New Zealand (Ltd.)
BRISBANE, Aus.	Macdonald, Hamilton & Co.
CHRISTCHURCH, N.Z.	Union S.S. Co. of New Zealand (Ltd.)
DUNEDIN, N.Z.	Union S.S. Co. of New Zealand (Ltd.)
FREMANTLE, Aus.	Macdonald, Hamilton & Co.
HOBART, Aus.	Union S.S. Co. of New Zealand (Ltd.)
LAUNCESTON, Aus.	Union S.S. Co. of New Zealand (Ltd.)
MELBOURNE, Aus.	H. F. Boyer, Freight and Passenger Agent, C.P. Ry., 59 William St. Union S.S. Co. of New Zealand (Ltd.)
PERTH, Aus.	Macdonald, Hamilton & Co.
SUVA, Fiji.	Union S.S. Co. of New Zealand (Ltd.)
SYDNEY, Aus.	Union S.S. Co. of New Zealand (Ltd.)
WELLINGTON, N.Z.	G. A. Glennie, Freight and Passenger Agent, C.P. Ry., 11 Johnston St. Union S.S. Co. of New Zealand (Ltd.)

Any of the agents listed above will be glad to make reservations at Canadian Pacific Hotels for intending guests.

Canadian Pacific Hotel Department

JOHN DAVIDSON,
Convention Traffic Manager,
MONTREAL.

D. J. GOWANS,
Asst. General Manager,
Eastern Hotels,
MONTREAL.

T. E. CHESTER,
Asst. General Manager,
Western Hotels,
WINNIPEG.

H. F. MATHEWS,
General Manager of Hotels,
MONTREAL.

CANADIAN PACIFIC Hotels

A Chain of Comfort

from the Atlantic to the Pacific

Cornwallis Inn.....Kentville, N.S.
 *The Pines.....Digby, N.S.
 *Lakeside Inn.....Yarmouth, N.S.
 *Algonquin Hotel.....St. Andrews, N.B.
 McAdam Hotel.....McAdam, N.B.
 Chateau Frontenac.....Quebec, Que.
 Royal York Hotel.....Toronto, Ont.
 Empress Hotel.....Victoria, B.C.

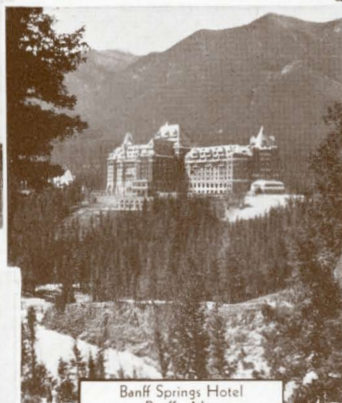
Royal Alexandra Hotel.....Winnipeg, Man
 Hotel Saskatchewan.....Regina, Sask.
 Hotel Palliser.....Calgary, Alta.
 *Banff Springs Hotel.....Banff, Alta.
 *Chateau Lake Louise.....Lake Louise, Alta.
 *Emerald Lake Chalet.....Near Field, B.C.
 Hotel Vancouver.....Vancouver, B.C.

*Also, Lodges in the Canadian Rockies and at
 Ontario fishing resorts.*

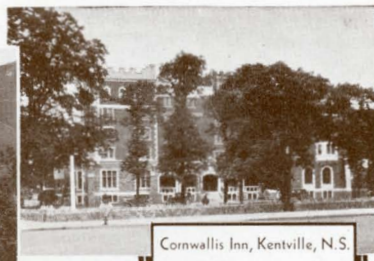
(*Open summer months only).



Hotel Saskatchewan
Regina, Sask.



Banff Springs Hotel
Banff, Alta.



Cornwallis Inn, Kentville, N.S.



Empress Hotel, Victoria, B.C.



Hotel Vancouver
Vancouver, B.C.



Royal Alexandra Hotel
Winnipeg, Man.



Royal York Hotel
Toronto, Ont.



Lakeside Inn,
Yarmouth, N.S.



Typical Lodge



Emerald Lake Chalet
Emerald Lake
(near Field, B.C.)



The Pines, Digby, N.S.



Chateau Lake Louise
Lake Louise, Alta.



Algonquin Hotel
St. Andrews, N.B.



Hotel Palliser, Calgary, Alta.



Chateau Frontenac
Quebec, Que.





Winter Sports at the Chateau Frontenac

