

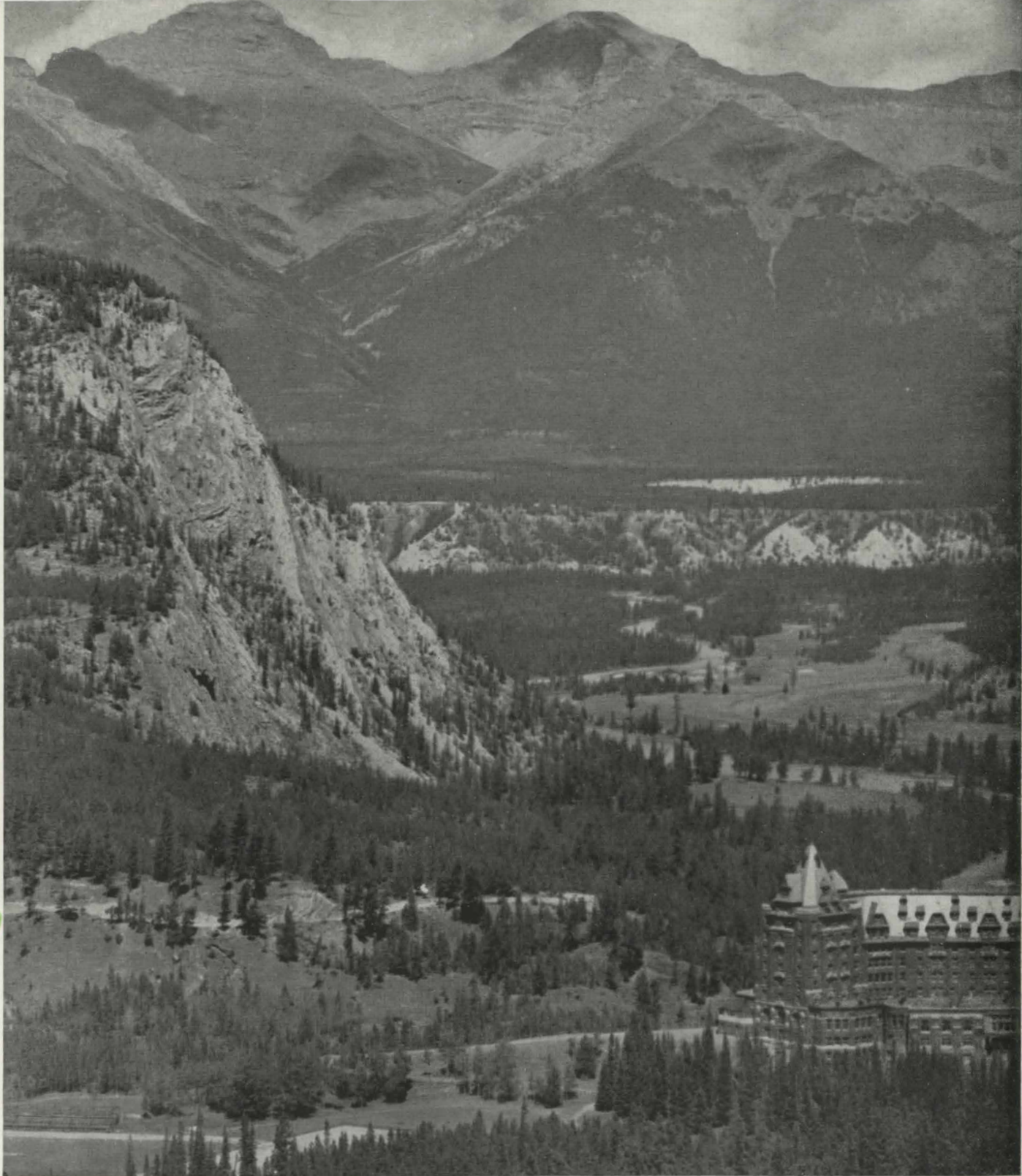


# BANFF.. LAKE LOUISE

IN THE CANADIAN  
ROCKIES

Canadian Pacific



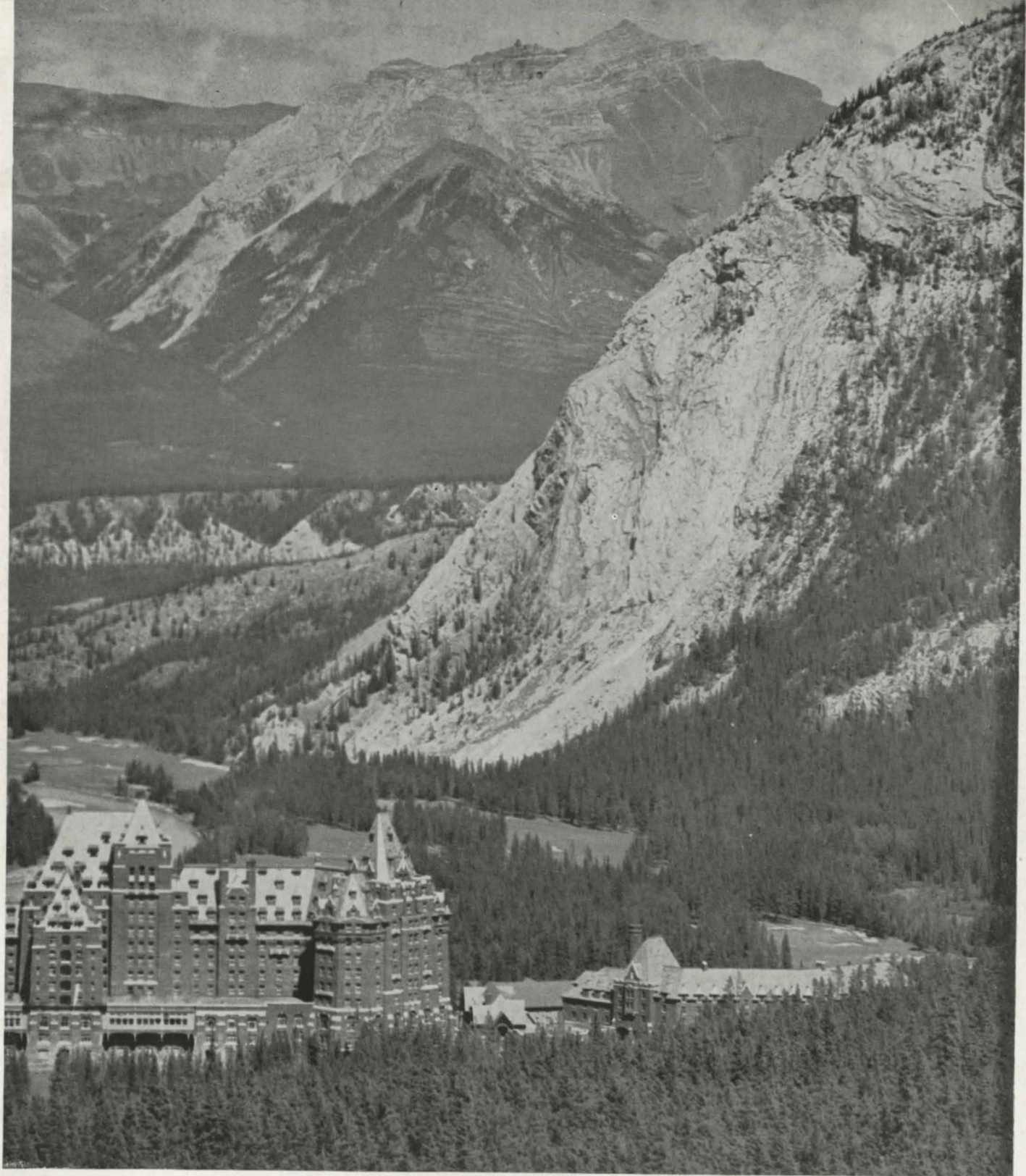


# BANFF

## BARONIAL HOST IN AN ALPINE EMPIRE ∨ ∨

4,625 feet above sea-level . . . exhilarating, bracing air. Wooded slopes . . . towering peaks . . . rippling mountain waters with the sparkle of diamonds! Away from the distractions of city noises, crowds and dust. An ideal setting for fun, rest . . . a stimulating atmosphere for serious convention business . . . with rare opportunities for gay relaxations.

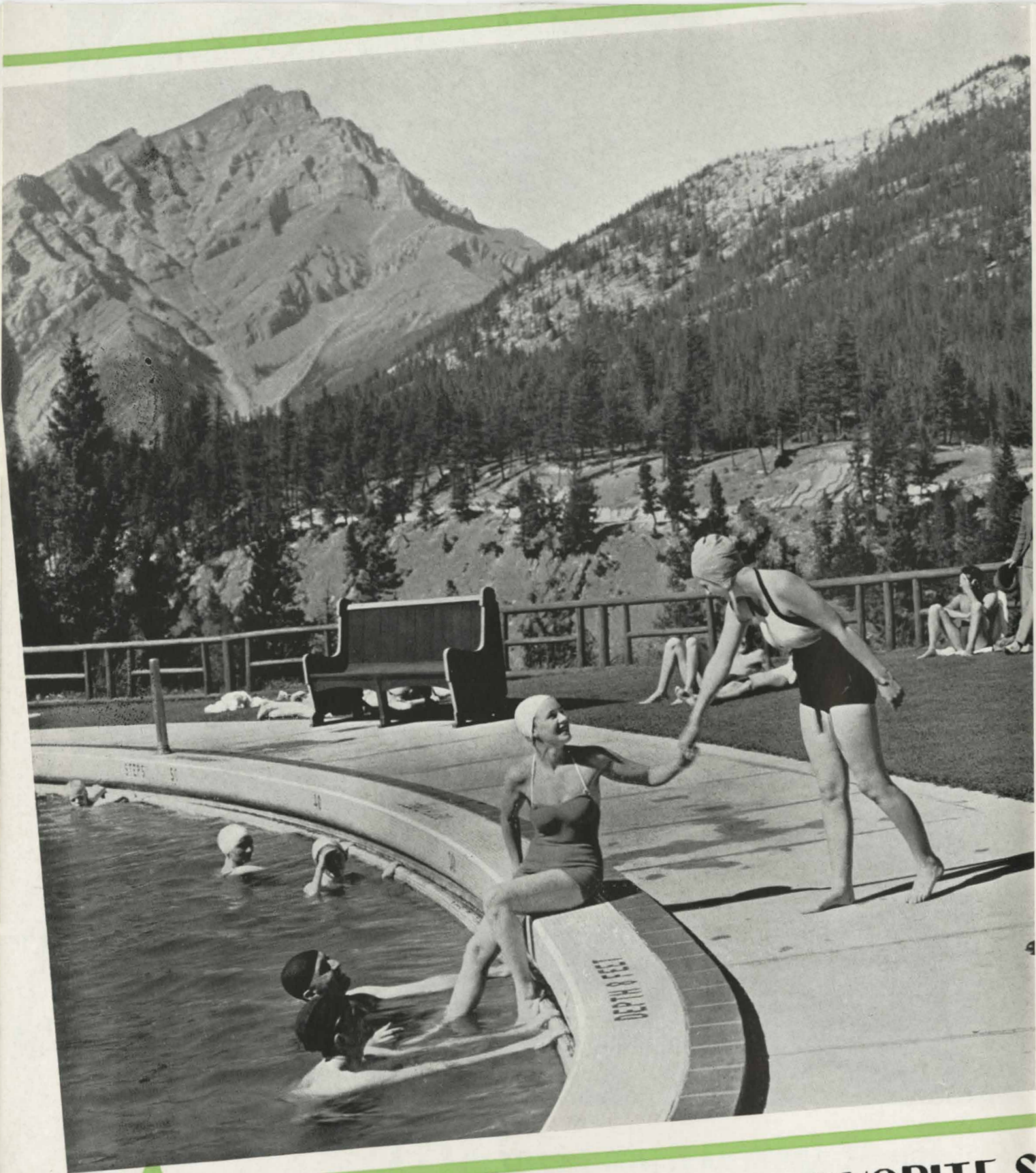




Banff Springs Hotel . . . like a majestic, Old-World castle. But modern in its comforts . . . in its sturdy, fire-proof structure. Rising 11 stories above its spectacular setting where the Bow and Spray Rivers meet. Comfort and luxury reign throughout its 600 guest rooms, all with bath . . . its 38 luxurious suites in exquisite period styles . . . each individual in its decoration! Banff's spacious public rooms are available for conventions, meetings, banquets . . . large and small! You'll find its services as supreme as its mile-high Canadian Rocky setting!





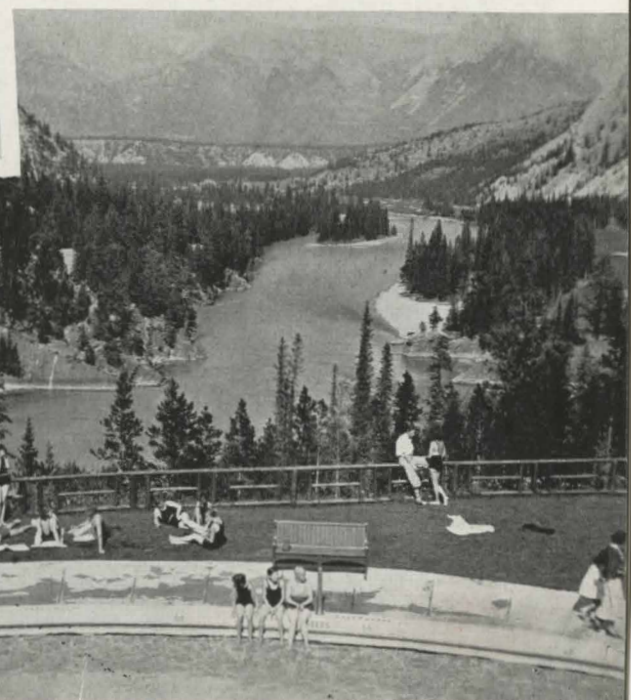
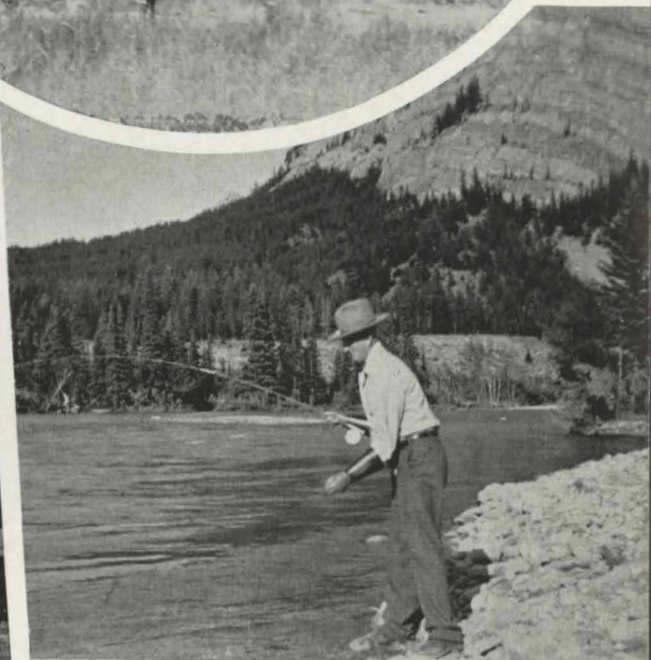


## *W* TOP SPOT FOR ALL YOUR FAVORITE S

Your leisure moments are really thrilling at Banff! Swim in a huge outdoor pool on a sun-splashed terrace! Or delight in refreshing spring water in Banff's indoor pool. Explore the fascinating mountains

that encircle your hotel, on well-trained, sure-footed ponies that know the Alpine trails! Experienced guides will help make your trip more interesting. Trails radiating in all directions invite you to enjoy that rare sport . . . mountain climbing. And for the fisherman, well stocked lakes and

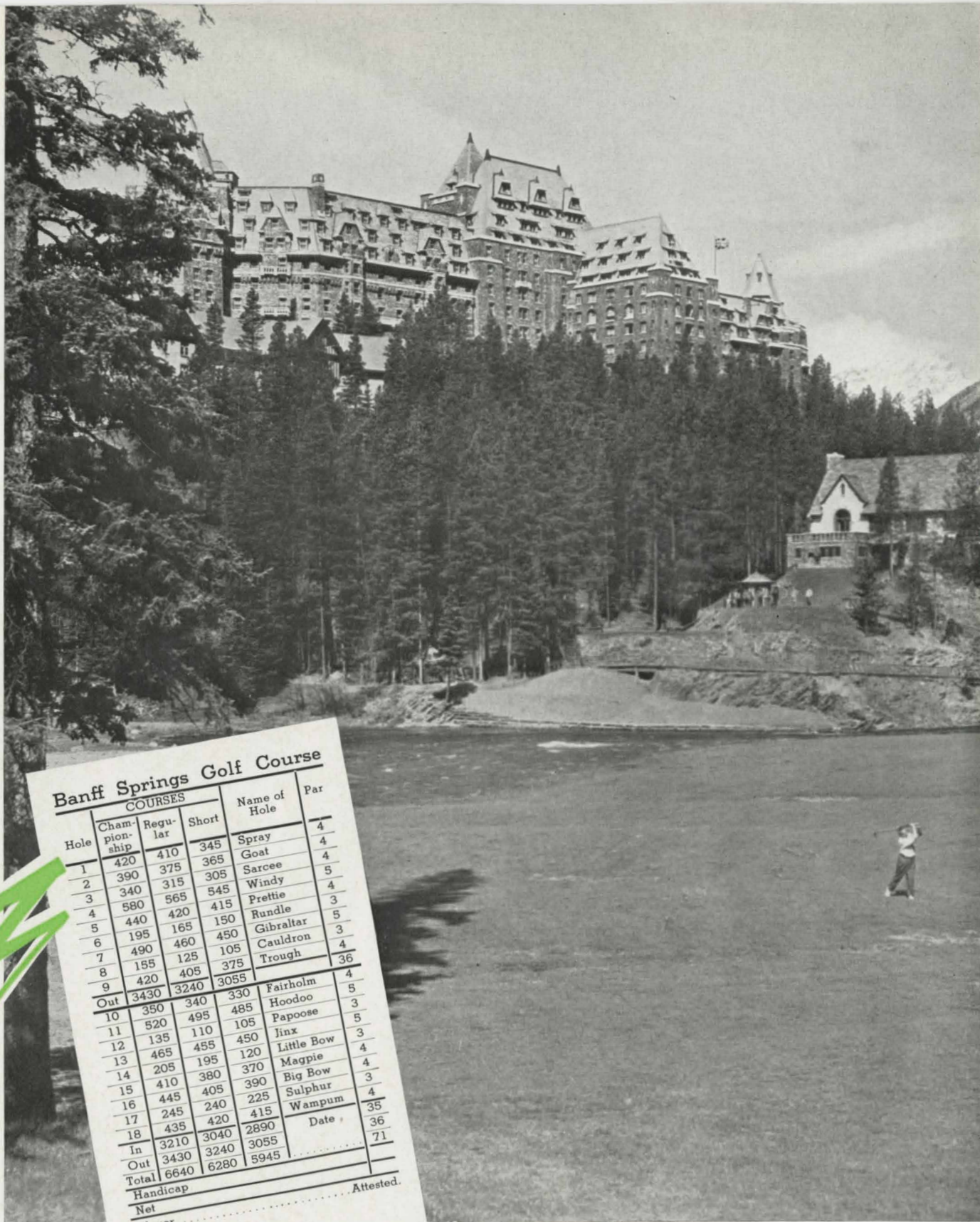




## SPORTS ~ ~ ~ ~ ~

streams . . . the Spray River, Spray Lakes, Forty Mile Creek, Mystic Lake, Sawback Lakes and others, offer picturesque haunts for landing fine specimens. Smooth riding buses and private cars, too, are available so you can thoroughly enjoy the glories of America's "Fifty Switzerlands in One"!





## Banff Springs Golf Course

Hole	COURSES			Name of Hole	Par
	Cham-pion-ship	Regu-lar	Short		
1	420	410	345	Spray	4
2	390	375	365	Goat	4
3	340	315	305	Sarcee	5
4	580	565	545	Windy	4
5	440	420	415	Prettie	3
6	195	165	150	Rundle	5
7	490	460	450	Gibraltar	3
8	155	125	105	Cauldron	4
9	420	405	375	Trough	36
Out	3430	3240	3055	Fairholm	4
10	350	340	330	Hoodoo	5
11	520	495	485	Papoose	3
12	135	110	105	Jinx	5
13	465	455	450	Little Bow	3
14	205	195	120	Magpie	4
15	410	380	370	Big Bow	4
16	445	405	390	Sulphur	3
17	245	240	225	Wampum	4
18	435	420	415	Date	35
In	3210	3040	2890		36
Out	3430	3240	3055		71
Total	6640	6280	5945		
Handicap					
Net					
Player					

## THE THRILL OF "MILE-HIGH" GOLF OVER SMOOTH BOW VALLEY FAIRWAYS

"A championship layout" . . . one of America's most famous title holding golfers called Banff's superb course! Nestling amid towering peaks, this 6,640 yard course with a par of 71 winds its way through sky-piercing mountains and forests of spruce . . . laced with the silvery waters of the Spray River . . . yet the course itself, with great broad fairways, is smooth and level. There are three sets of tees, so you can set your own pace!

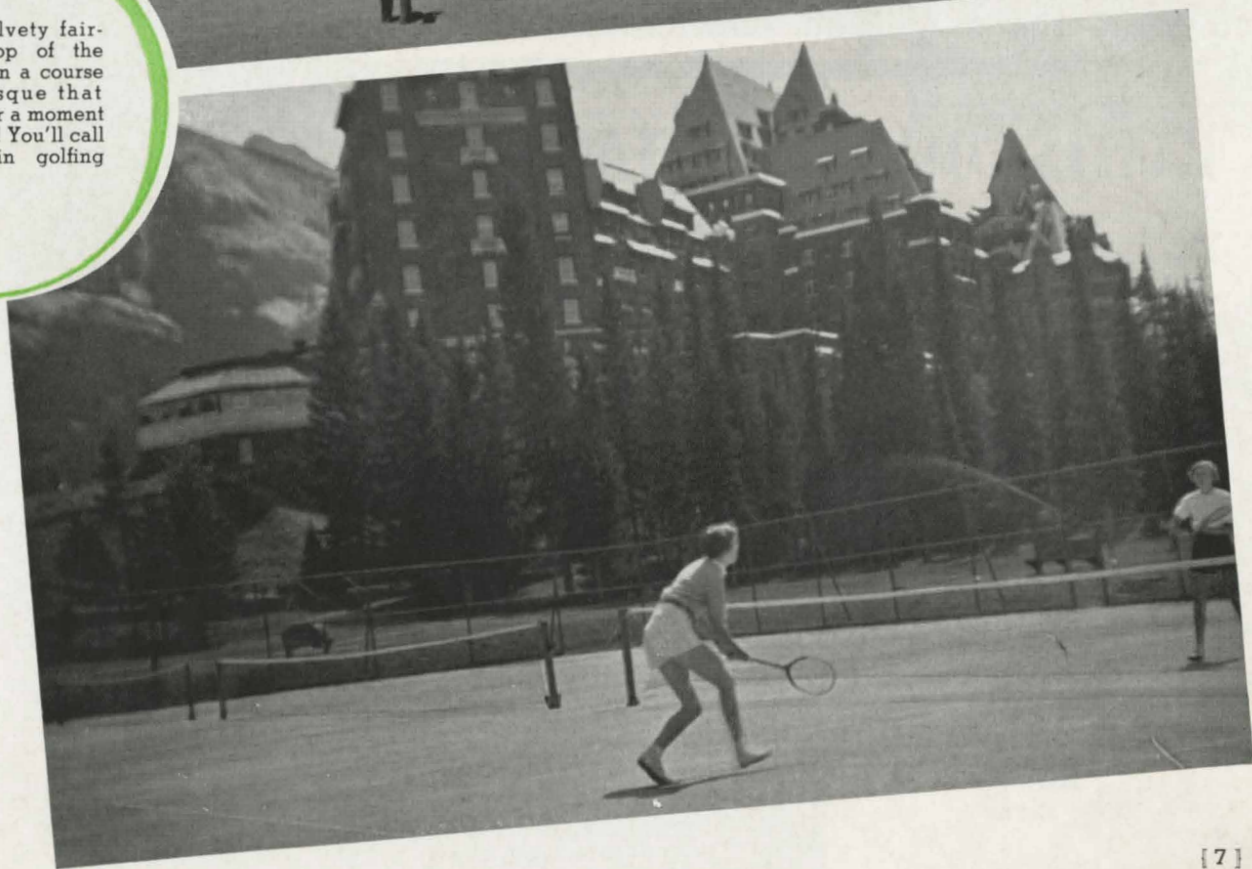




Few other golf courses can offer such majestic settings . . . such zestful Alpine air . . . as this noted championship course in the heart of Canada's Rockies.



Smooth, velvety fairways on top of the world . . . on a course so picturesque that there's never a moment of monotony! You'll call it "tops" in golfing thrills!







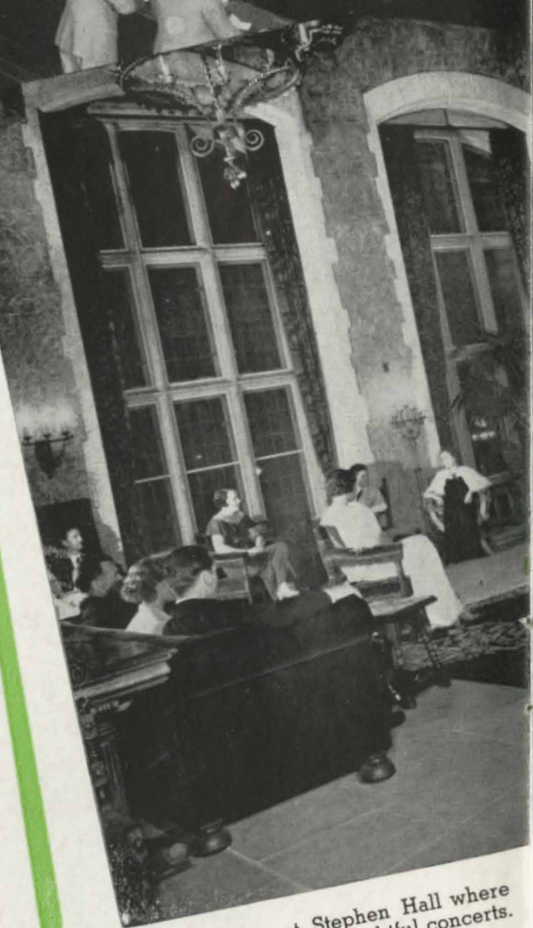
## BANFF'S CONVENTION FACILITIES

Conventions recall the traditions of the past . . . inspire energy in the present . . . and assure progress in the future.

When you make Banff your convention headquarters you enjoy all the conveniences of the great metropolitan centers . . . plus the thrilling scenery of the Canadian Rockies, the majestic atmosphere of a baronial hotel in bracing Alpine air, spacious public rooms and halls, luxurious accommodations for congenial gatherings . . . and a heavenly spot free from rush and noise.

### PUBLIC SPACES — DINING ROOMS — MEETING ROOMS AND BANQUET ROOMS

Office Floor	Garden Lounge.....	6,215 sq. ft.	Information, Telegraph, Tickets, Bank, Etc., General Lounge, Oak Room, Cloister Corridor		
	Mount Stephen Hall.....	2,600 sq. ft.			
	Gallery Sun Room.....	1,718 sq. ft.			
	Corridors.....	1,718 sq. ft.			
First Floor			Seating Capacities		
			Convention	Banquet	Dining
	Ball Room.....	5,634 sq. ft.	750	450	....
	Riverview Lounge.....	6,215 sq. ft.	....	....	....
	Fairholme Dining Room.....	10,106 sq. ft.	1,000	750	650
	Alhambra Dining Room.....	5,824 sq. ft.	750	450	350
	Private Dining Room.....	640 sq. ft.	75	45	30
	Private Dining Room.....	408 sq. ft.	40	20	16
	Billiard Room.....	800 sq. ft.	....	....	....



Above: Mount Stephen Hall where guests gather for delightful concerts.

Right: The ballroom and fine orchestra make evenings gay and charming.



# COMMODIOUS CONVENIENCES FOR LUXURIOUS LIVING



Here is the Tavern where you may quench that "mile-high" thirst as you desire.



The Alhambra Dining Room boasts a fine cuisine and charm that adds to the vogue of good living. In addition, the great Fairholme dining room and two private dining rooms provide conveniences of just the right proportions for conventions large and small.



Permanents, facials, manicures... whatever beauty service you desire is provided by skilled beauticians at Banff.



Expert barbers, Turkish baths, chiropodists keep you in trim during your stay at Banff.





## YOUR COMFORTS ARE ENTHRONED IN MAJESTIC HALLS AND NOBLE SUITES AT BANFF

Whether your group is large or small you will enjoy the spaciousness of every room at Banff . . . from great public halls to charming private rooms. Here life is gracious and complete.

### Office Floor

RECEPTION HALL . . . Hotel Office, Manager's Office, Motor Car and Saddle Horse Agent, Head Porter, Public Stenographer, Telephones, Church Directory.

GARDEN LOUNGE . . . Rail, Sleeping Car and Steamship Ticket Office, Telegrams and Cables, Bank of Montreal, Assistant Manager's office.

GARDEN LOUNGE LOBBY . . . Check Room.

MOUNT STEPHEN HALL . . . Billiard Room, Ladies' Retiring Room, Men's Retiring Room.

### DIRECTORY OF SERVICES

#### First Floor

NORTH WING . . . Fairholme Dining Room (Table d'hôte service), Ball Room, Conservatory, Ladies' Rest Room, Library.

CENTRE SECTION . . . Curio Room, News Stand, Sun Parlor.

SOUTH WING . . . Alhambra Dining Room (à la Carte Service), Strathcona and Angus private dining rooms, writing room.

#### Terrace Floor

Barber Shop, Manicure, Hairdresser, Chiropodist, Shoe Shine, Tavern, Soda Fountain, Men's Retiring Room, Swimming Pool Office, Turkish Baths.—House Physician in attendance.



A bank at your service . . . right in the hotel.





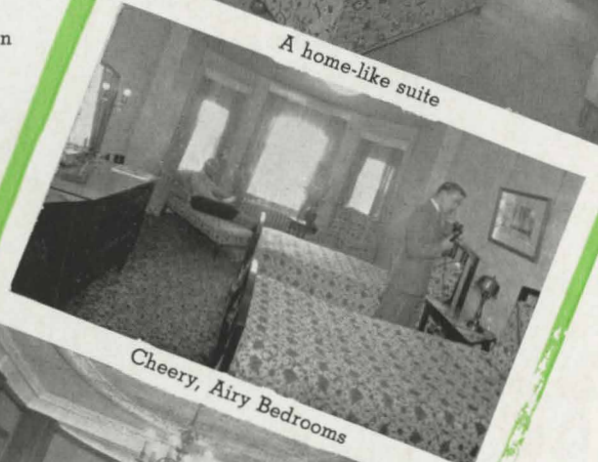
Suites with the Charm of a Gracious Home



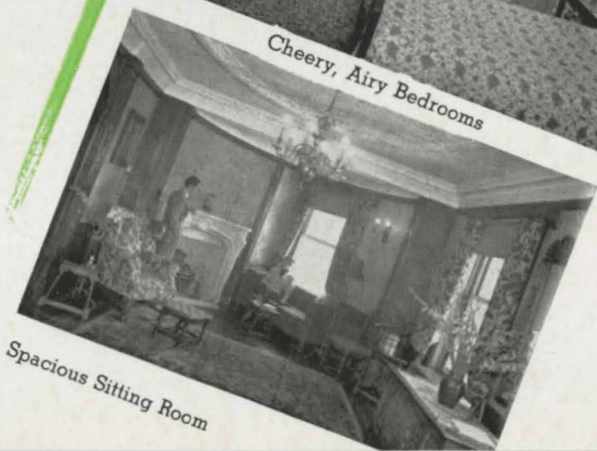
Complete  
Metropolitan  
Services



A home-like suite



Cheery, Airy Bedrooms



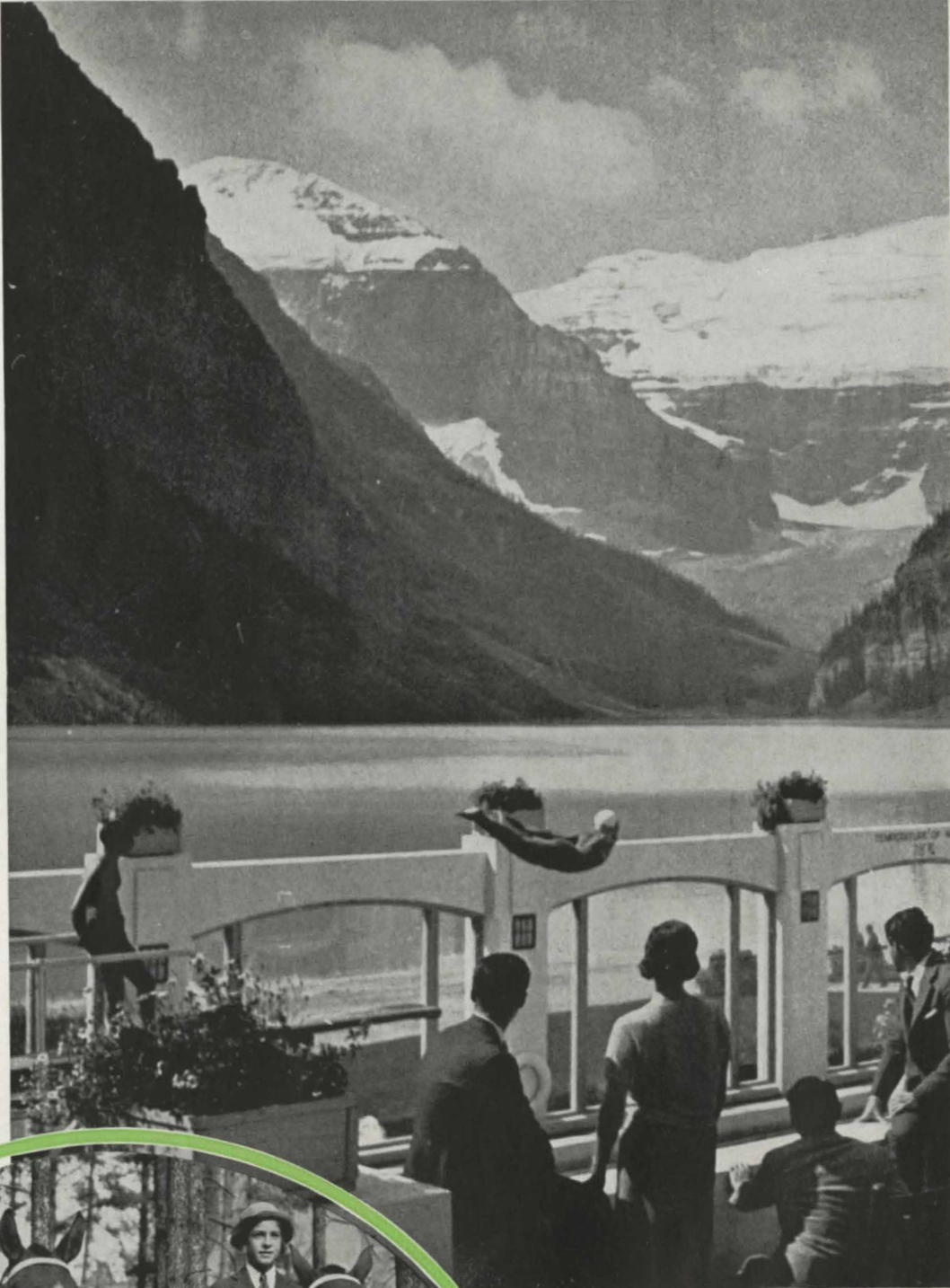
Spacious Sitting Room



☆

# THE LURE OF LOVELY LAKE LOUISE

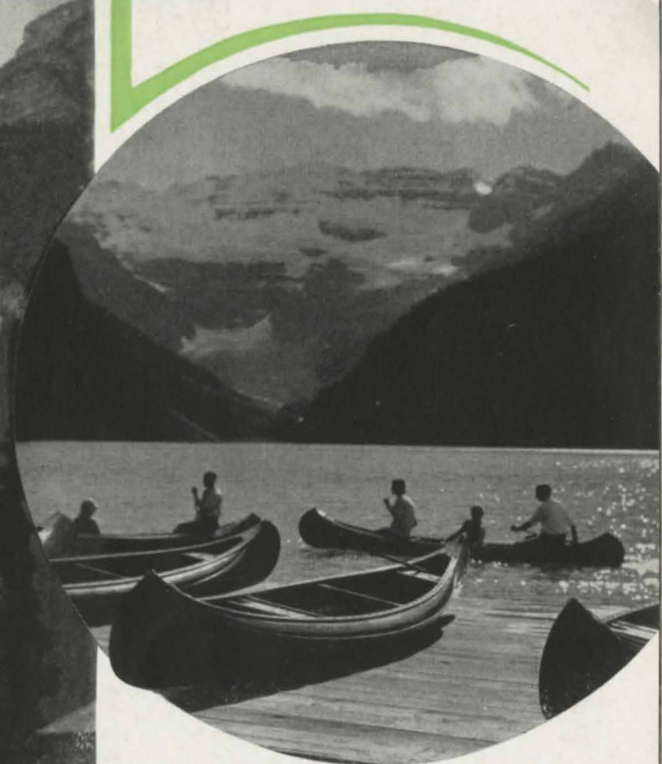
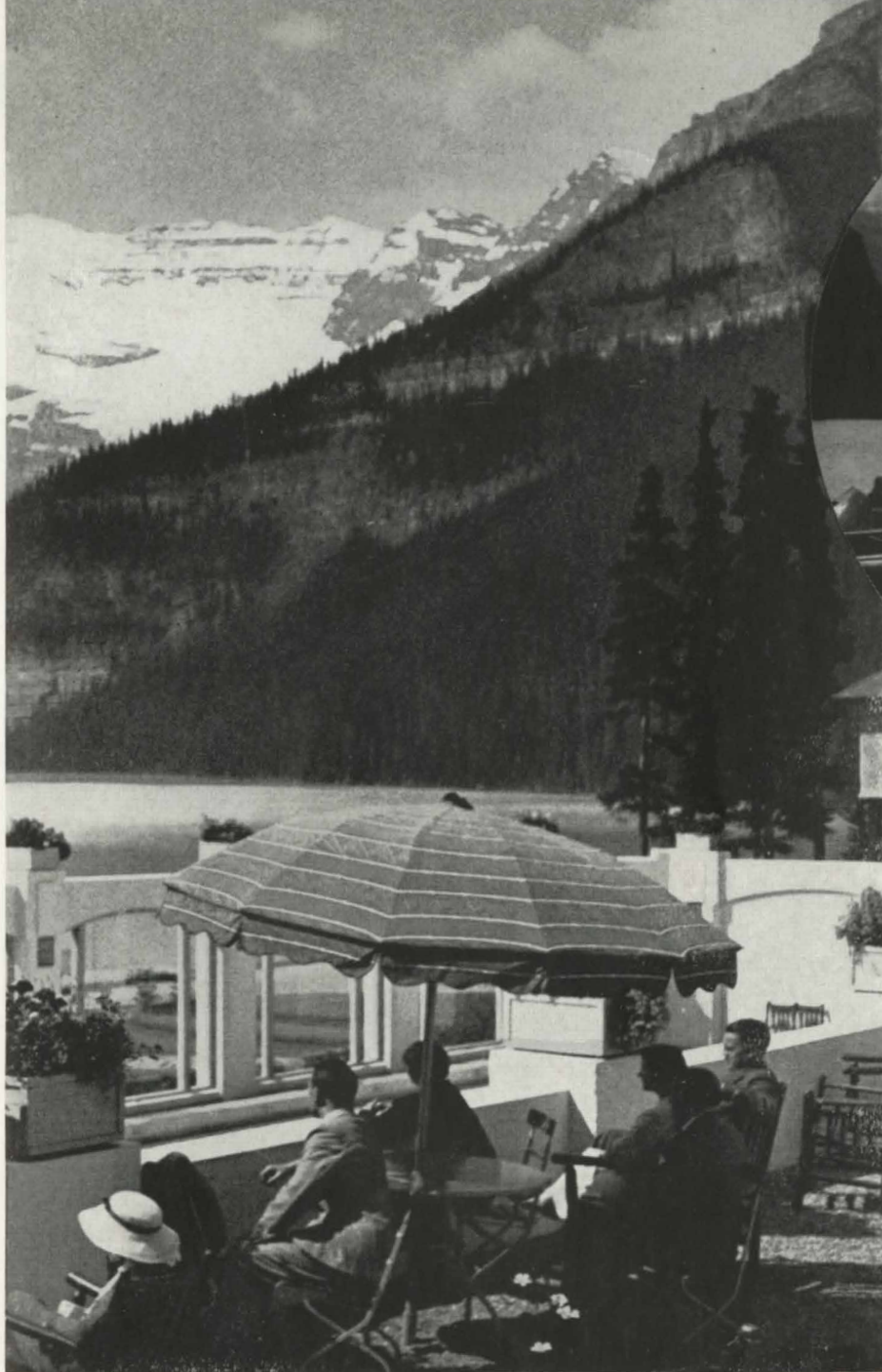
☆



## GAYETY CONVENES ALONG THE SHORES OF BRILLIANT SAPPHIRE WATERS

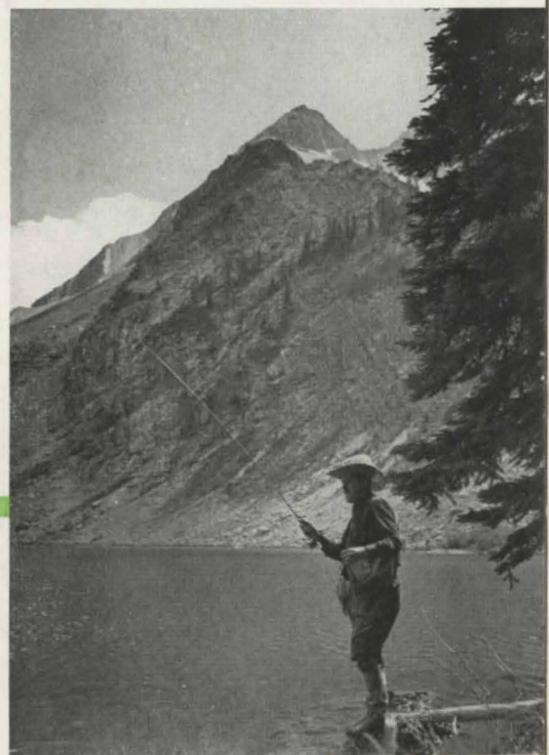
The zest of Alpine living and the charm of Continental life are happily combined at Lake Louise . . . a sparkling mirror of glowing sapphire waters encircled by snow-topped peaks. Chateau Lake Louise is situated on a beautiful terraced lawn that slopes down to the shores of the Lake . . . 5,680 feet above sea level. A modern, fireproof structure with 386 guest rooms, all with bath . . . 8 suites . . . all with superb views of lake and glacier.





For rest and romance enjoy the quiet pleasures of boating on Lake Louise's calm blue waters, encircled by rainbow peaks!

Fish in Lake Louise and nearby waters . . . the Bow and Pipestone rivers, Moraine and Consolation lakes.



## OUTDOOR LIFE IS MORE COLORFUL IN THIS ALPINE PARADISE FOR PLAY!

Only America's Alps could offer such a complete array of outdoor diversions! Adjoining the hotel is an exceptionally large outdoor pool . . . filled with refreshing glacial waters at the comfortable temperature of 78 degrees Fahrenheit. Glass sides keep you sheltered from winds. Tennis courts invite the racquet enthusiast. Scenic motor roads in the vicinity make it easy to enjoy the widespread beauties of this area. Pony trails radiate in all directions . . . mountain climbing and trail hiking are at their height, from

Lake Louise. Swiss Guides may be engaged at a moderate fee. And in all the world there is probably no more entrancing place for boating than on the deep blue, placid waters of Lake Louise! The mountain setting of Lake Louise makes it an ideal place for organizations desiring a quiet, yet interesting and lovely place for their deliberations.





## GRACIOUS..AND SPACIOUS IS THIS CHARMING MOUNTAIN CHATEAU AT LAKE LOUISE! . . . .

A charming mountain retreat in an inspiring Alpine atmosphere . . . commodious in its accommodations . . . with public rooms and facilities that are ideal for small conventions. Here you may enjoy the conveniences of a convention site in the heart of a great city . . . yet surrounded by the beauties of Canada's Rockies and the peace of a secluded haven.

### DIRECTORY OF SERVICES

Lower Floor . . . Canadian Customs, Ladies' Hairdressing and Manicure Parlor, Barber Shop, Billiard Room, Photograph Studio, Tavern, Shoe Shine.

Office Floor . . . Hotel Office, Lounge, Ball Room, Library, Ladies' Rest Room, Post Office, Bank of Montreal, Head Porter, Motor Car and Saddle Horse Agent, Telephones, Telegraphs, Information Bureau, Railway and Sleeping Car Ticket Office, Check Room, News and Curio Stand, Public Stenographer.

First Floor . . . Dining Room, Dining Room Foyer, Children's and Servants' Dining Room. A physician and nurse are residents at Chateau Lake Louise during the season and an emergency operating room adjoins the Physician's Office.











## A KINGDOM OF MOUNTAIN MAGIC AND SCENIC SPLENDORS TO EXPLORE

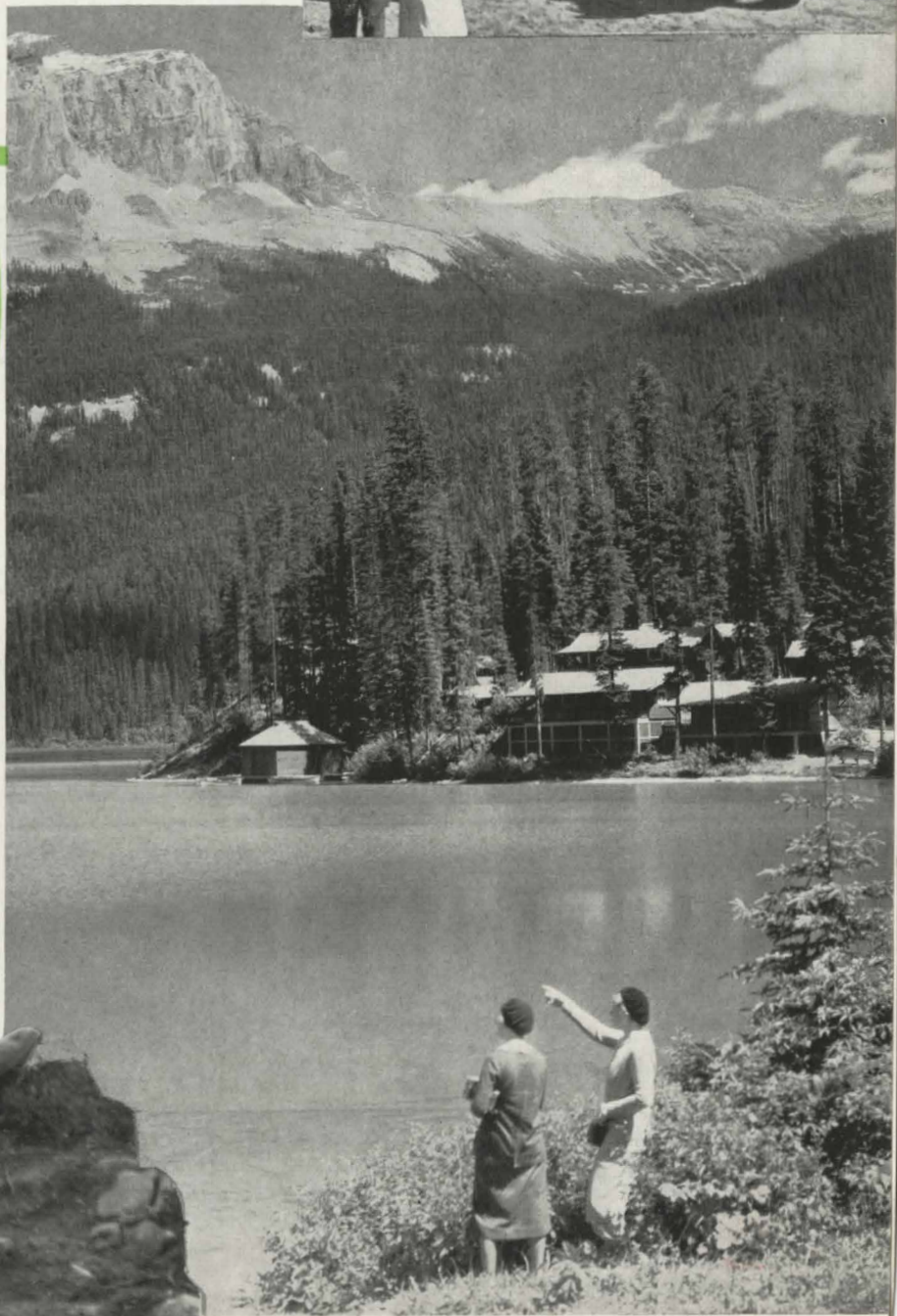
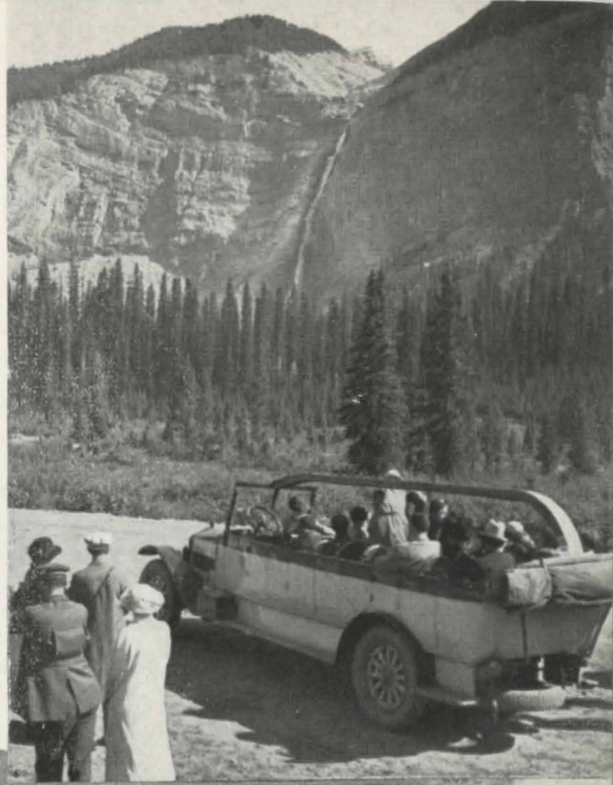
All around Lake Louise is a paradise for sight-seeing! Thrilling, dramatic peaks . . . acres of rugged forest! And this vast sanctuary is yours to explore . . . travelling over smooth, modern highways in the roomy motor buses operated on regular schedules from Lake Louise. Or you may hire private touring cars at reasonable rates

established by the National Parks Service. Trips are operated to Banff, Moraine Lake in the Valley of the Ten Peaks; Emerald Lake, Field, Golden and other points, throughout the season. Take your camera along . . . the sheer magic of every turn of the road will make a breath-taking picture to treasure forever!



## MODERN HIGHWAYS

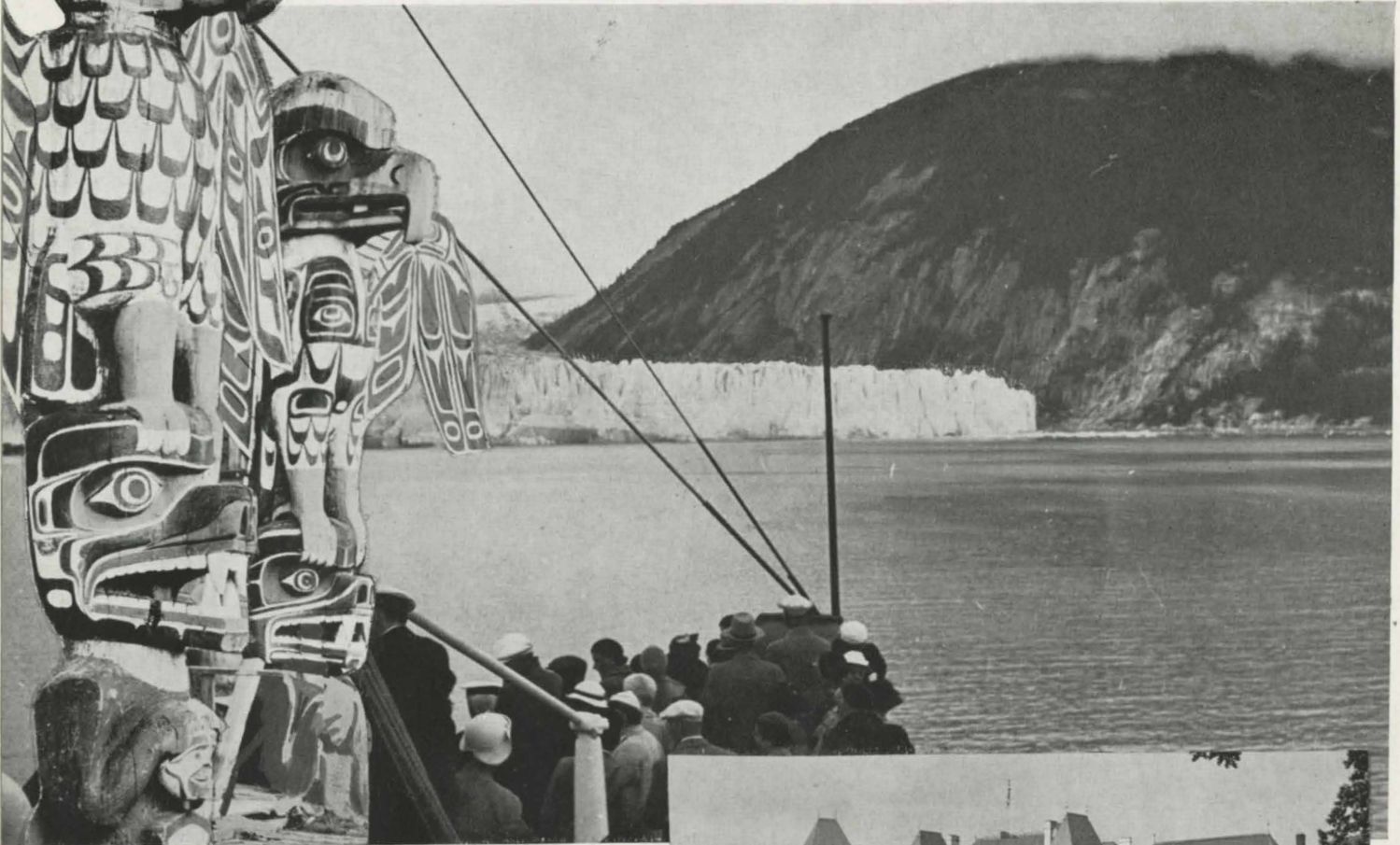
The motor trip to Emerald Lake is delightful. From the Lake Louise-Golden highway the bus turns off to a road cut through the heart of the forest . . . Snowpeak Avenue, and on to Emerald Lake. The lake is as gem-like as its name. It has its moods of change and mysterious charm. The community is like a little Swiss village with cozy individual cabins and a central chalet. Other appealing resorts are the rustic lodges nestling in the heart of the Rockies . . . Yoho, Wapta, Lake O'Hara, Radium Hot Springs, Moraine Lake and Mount Assiniboine Lodge. Life here is carefree and the spirit of outdoor adventure captures all who linger.





# ON TO THE LAND OF GOLD RUSH ROMANCE AND MIDNIGHT SUN

# ALASKA



Approaching mile-wide Taku Glacier

## DISCOVER THE CHARM OF CANADA'S WESTERN HARBORS EVERGREEN VICTORIA AND VANCOUVER

**VANCOUVER** . . . is the largest Canadian port on the Pacific Coast. Here Canadian Pacific plays the gracious host to visitors from the far-flung corners of the globe . . . with its majestic Hotel Vancouver . . . a large, fireproof structure with 521 guest rooms and attractive public rooms, dining rooms and convention facilities. Golf, tennis, motoring, riding, hiking are a few of the recreations.

**VICTORIA** . . . year-round sunshine, all-year golf . . . gardens that bloom twelve months in the year! Here the charming Empress Hotel is situated overlooking the placid Inner Harbor . . . ivy-covered and embowered gardens. The social and convention center of "Canada's Evergreen Playground," the Empress has 570 guest rooms, suites, large public and dining rooms that offer hospitable accommodation to groups large and small.

**ALASKA** . . . Canadian Pacific Princess liners sail regularly from Vancouver and Victoria to America's Last Pioneer Land . . . Alaska. This is a popular 9-day all-expense cruise . . . 2,000 miles via the smooth Inside Passage . . . to a fascinating land of giant flowers, glaciers, and totem poles.



Empress  
Hotel,  
Victoria



Hotel  
Vancouver,  
Vancouver



# Canadian Pacific Agencies Throughout the World

## Canada and United States

Atlanta, Ga.	404 C. & S. Nat'l Bk. Bldg.
Banff, Alta.	Canadian Pacific Station
Boston, Mass.	405 Boylston St.
Buffalo, N.Y.	22 Court St.
Calgary, Alta.	Canadian Pacific Station
Chicago, Ill.	71 East Jackson Blvd.
Cincinnati, Ohio	201 Dixie Terminal Bldg.
Cleveland, Ohio	1010 Chester Ave.
Dallas, Texas	1212 Kirby Bldg.
Detroit, Mich.	1231 Washington Blvd.
Edmonton, Alta.	Canadian Pacific Bldg.
Fort William, Ont.	108 South May St.
Guelph, Ont.	30 Wyndham St.
Halifax, N.S.	413 Barrington St.
Hamilton, Ont.	4 King St. West
Honolulu, T.H.	Theo. H. Davies & Co.
Indianapolis, Ind.	Merchants Bank Building.
Juneau, Alaska	V. W. Mulvihill.
Kansas City, Mo.	201-2 Waldheim Bldg.
Ketchikan, Alaska	Edgar Anderson.
Kingston, Ont.	180 Wellington St.
London, Ont.	417 Richmond St.
Los Angeles, Cal.	621 South Grand Ave.
Milwaukee, Wis.	1014 Warner Theatre Bldg.
Minneapolis, Minn.	611 2nd Ave. South.
Montreal, Que.	201 St. James Street W.
Moose Jaw, Sask.	Canadian Pacific Station.
Nelson, B.C.	Baker & Ward Sts.
New York, N.Y.	Madison Ave., at 44th St.
North Bay, Ont.	87 Main Street West.
Omaha, Neb.	803 W.O.W. Building
Ottawa, Ont.	83 Sparks St.
Peterboro, Ont.	343 George St.
Philadelphia, Pa.	1500 Locust St.
Pittsburgh, Pa.	Koppers Bldg., 444 Seventh Ave.
Port Arthur, Ont.	Canadian Pacific Station.
Portland, Ore.	626 S.W. Broadway.
Prince Rupert, B.C.	W. L. Coates.
Quebec, Que.	Palais Station.
Regina, Sask.	Canadian Pacific Station.
Saint John, N.B.	40 King St.
St. Louis, Mo.	418 Locust St.
St. Paul, Minn.	Soo Line, Fourth and Cedar Sts.
San Francisco, Cal.	152 Geary St.
Saskatoon, Sask.	115 Second Ave.
Sault Ste. Marie, Ont.	529 Queen St.
Seattle, Wash.	1320 Fourth Ave.
Sherbrooke, Que.	91 Wellington St. North.
Skagway, Alaska	L. H. Johnston.
Spokane, Wash.	Old National Bank Bldg.
Tacoma, Wash.	1113 Pacific Ave.
Toronto, Ont.	Canadian Pacific Bldg.
Vancouver, B.C.	434 Hastings St. West.
Victoria, B.C.	1102 Government St.
Washington, D.C.	14th & New York Ave., N.W.
Windsor, Ont.	196 Ouellette Avenue
Winnipeg, Man.	Main and Portage.

## Europe

Antwerp, Belgium	Place de Meir, 42
Belfast, Ireland	24 Donegall Place.
Birmingham, Eng.	4 Victoria Square.
Bristol, Eng.	18 St. Augustine's Parade.
Brussels, Belgium	98 Blvd. Adolphe-Max.
Glasgow, Scotland	25 Bothwell St.
Hamburg, Germany	Alsterdamm 9.
Liverpool, Eng.	Pier Head.
London, Eng.	Trafalgar Square, W.C. 2. 103 Leadenhall St., E.C. 3.
Manchester, Eng.	43 Cross St.
Paris, France	24 Boulevard des Capucines.
Rotterdam, Holland	Coolsingel No. 91.
Southampton, Eng.	Canute Road.

## Asia

Hong Kong	Opposite Blake Pier.
Kobe, Japan	7 Harima-machi.
Manila, P.I.	14 Calle David, Roxas Bldg.
Shanghai, China	The Bund and Peking Road.
Tokyo, Japan	No. E-7 No. 2 Sanchome, Marunouchi.
Yokohama, Japan	21 Yamashita-cho.

## Australia, New Zealand, Fiji

Traffic Agent for Australia, Can. Pac. Ry., Union House,  
Sydney, N.S.W.

Traffic Agent for New Zealand, Can. Pac. Ry., 32-34 Quay Street,  
Auckland, N.Z.

Adelaide, Aus.	Macdonald, Hamilton & Co.
Auckland, N.Z.	Union S.S. Co. of New Zealand (Ltd.)
Brisbane, Aus.	Macdonald, Hamilton & Co.
Christchurch, N.Z.	Union S.S. Co. of New Zealand (Ltd.)
Dunedin, N.Z.	Union S.S. Co. of New Zealand (Ltd.)
Fremantle, Aus.	Macdonald, Hamilton & Co.
Hobart, Aus.	Union S.S. Co. of New Zealand (Ltd.)
Launceston, Aus.	Union S.S. Co. of New Zealand (Ltd.)
Melbourne, Aus.	Freight and Passenger Agent, C.P. Ry., 59 William St.
Perth, Aus.	Union S.S. Co. of New Zealand (Ltd.)
Suva, Fiji	Macdonald, Hamilton & Co.
Sydney, Aus.	Union S.S. Co. of New Zealand (Ltd.)
Wellington, N.Z.	Freight and Passenger Agent, C.P. Ry., 11 Johnston St. Union S.S. Co. of New Zealand (Ltd.)

Any of the agents listed above will be glad to make reservations at Canadian Pacific Hotels for intending guests.

## CANADIAN PACIFIC . . . . HOTEL DEPARTMENT

JOHN DAVIDSON,  
Convention Traffic Manager,  
Montreal.

D. J. GOWANS,  
Asst. General Manager,  
Eastern Hotels,  
Montreal.

T. E. CHESTER,  
Asst. General Manager,  
Western Hotels,  
Winnipeg.

H. F. MATHEWS,  
General Manager of Hotels,  
Montreal.





2-A

# LAKE LOUISE.. BANFF

IN THE CANADIAN  
ROCKIES

Canadian Pacific