



**ONTARIO**

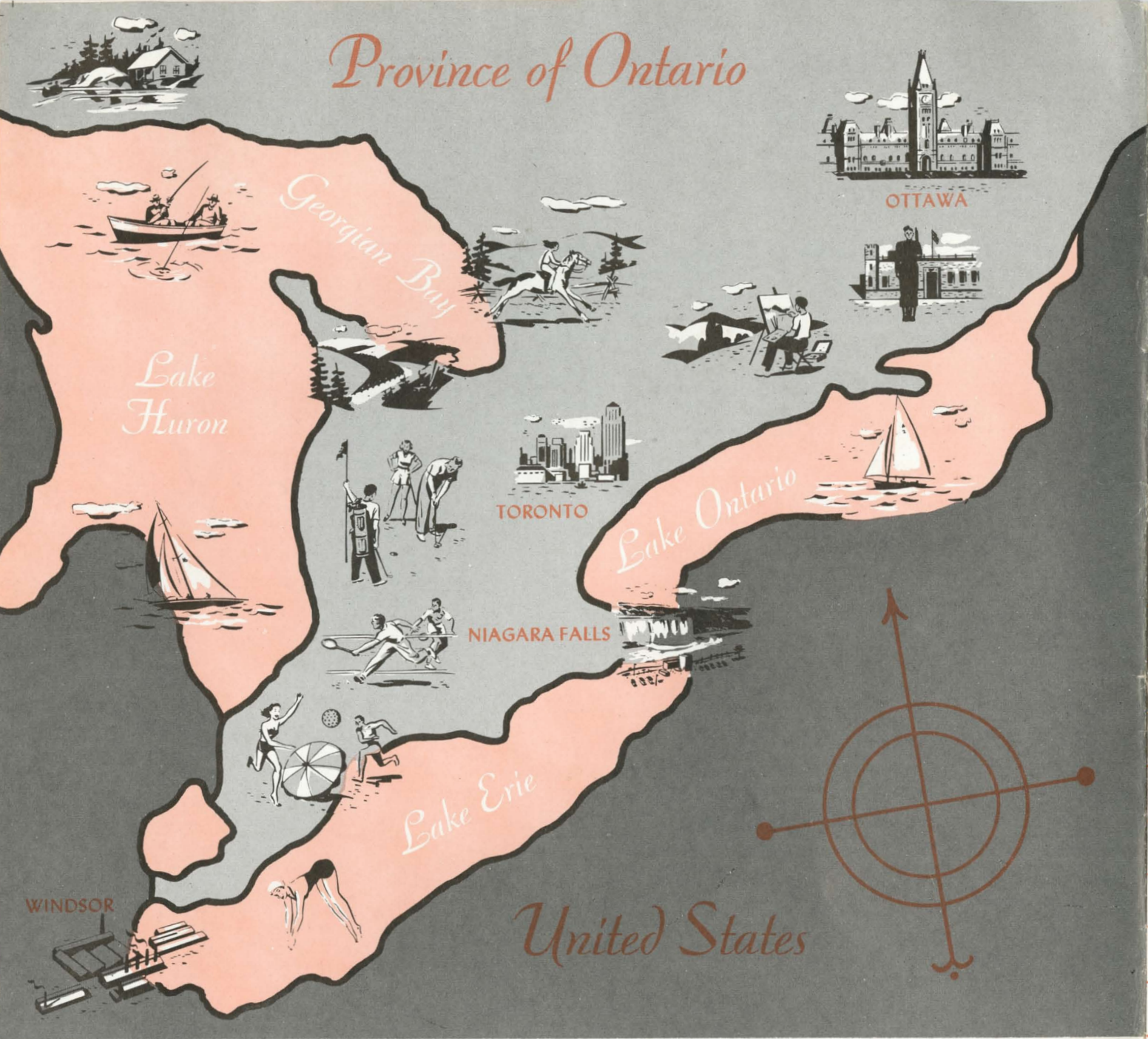
*Vacationland*

CANADA



**CANADIAN  
NATIONAL  
RAILWAYS**

# Province of Ontario



Occupying a central position among its sister provinces, Ontario spreads over more than 400,000 square miles which contain nearly two million lakes and some 100,000 square miles of forest. Along Ontario's southern borders the visitor will find most of her cities and industries with soft, rolling countryside between. North and west from the southern fringe are the myriad lakes and never-ending forest stretching north to Hudson Bay, a huge, unspoiled outdoor playground. Canadian National Railways network of lines blanketing the south and penetrating the north cover Ontario!



## ONTARIO VACATIONLAND

Ontario dresses in two costumes. In the south, along her 500-mile land and water border with the United States, she wears soft garments—a mixture of rolling, pastoral countryside and busy industrial area that complement each other in happy proximity. Here are her great urban developments, the closely-packed market towns, the well-groomed fruit and stock farms and the busy waterways of the lower Great Lakes system. This is “Old Ontario”, thoroughly modern but occupying only a fifth of the province’s huge area. It is in the larger portion “Northern Ontario”, that she wears her other costume—the cool, green beauty and brooding calm of the forest, the jewels that are her countless picturesque lakes and the rugged armament of rock outcroppings that she sometimes belts on to challenge those who would invade her domain at the edge of civilization. No matter what costume she wears when you court her, Ontario is a lovely siren. From the sheer, mist-shrouded drop of Niagara Falls and the emerald-green Thousand Islands in the St. Lawrence River to the hurtling rivers and the myriad pine-rimmed lakes in the far-northwest Lake of the Woods country, Ontario has attractions for every visitor. Bring your camera, your hiking shoes, your paddle, your rod, your gun—or just an appetite for food and scenery. This great province, heart of English-speaking Canada, will fulfil your vacation desire.

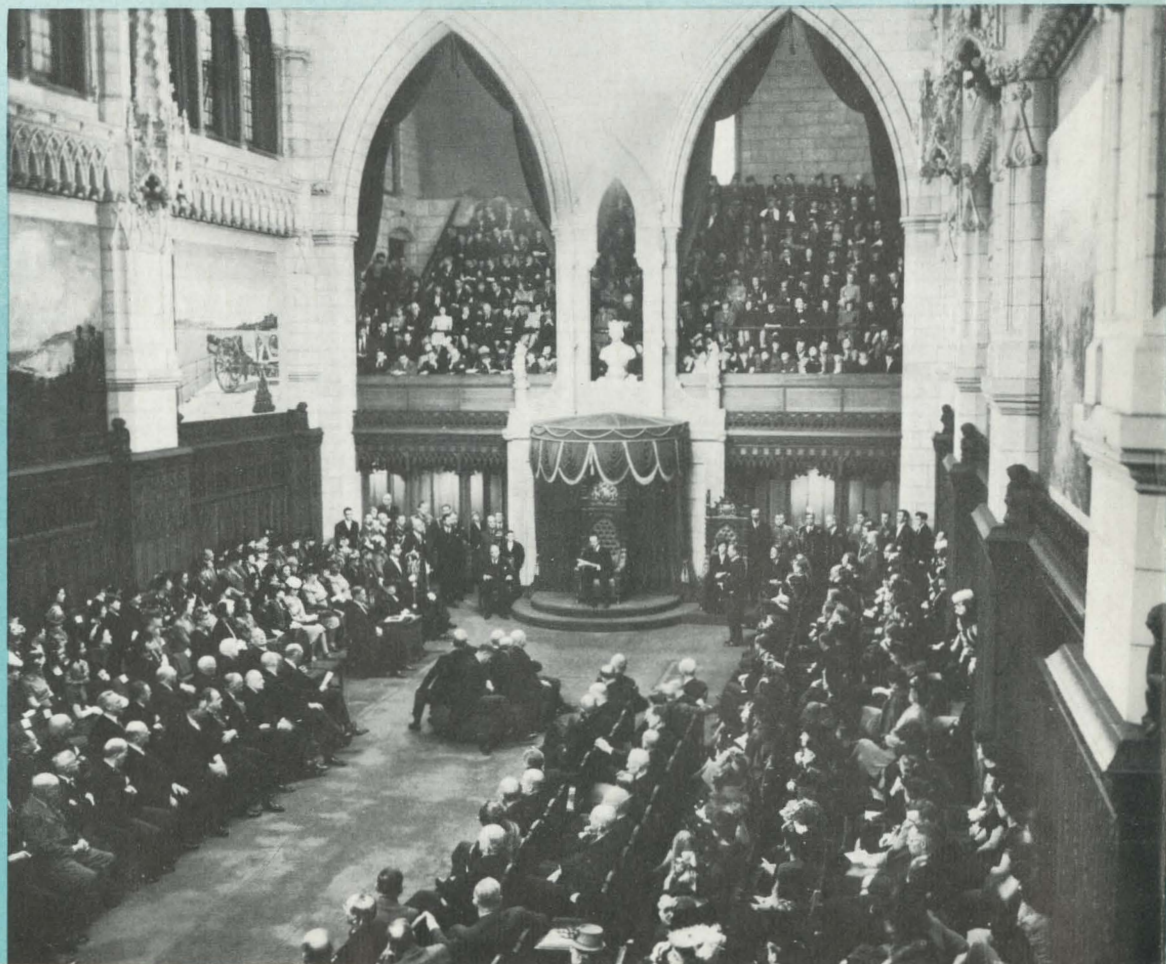




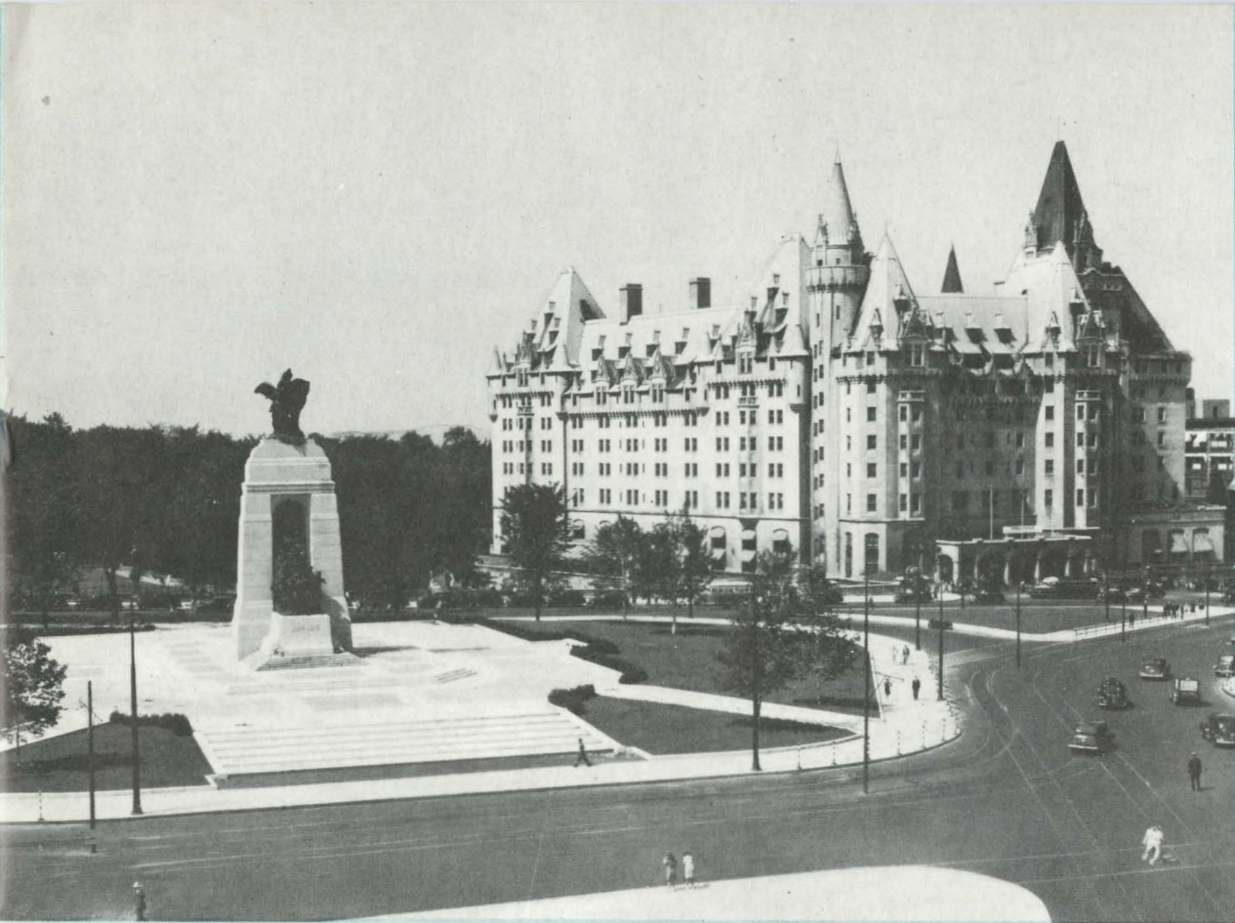
# OTTAWA *Canada's Capital*

Ottawa possesses a major attribute of a great Capital—its magnificent natural setting. The multi-towered city rises along the crest of the sheer right bank of its name-river, a majestic watercourse that winds down from Lake Temiskaming and flows on to the St. Lawrence. The Rideau River flows into Ottawa from the south.

Westward and northward, the horizon is crowned with the Gatineau Range, foothills of the Laurentians. The Houses of Parliament with their Peace Tower, high on a rocky promontory overlooking the Ottawa River, reflect the dignity of government in stately Gothic architecture.



*Pomp and ceremony mark the annual opening of Canada's Parliament.*

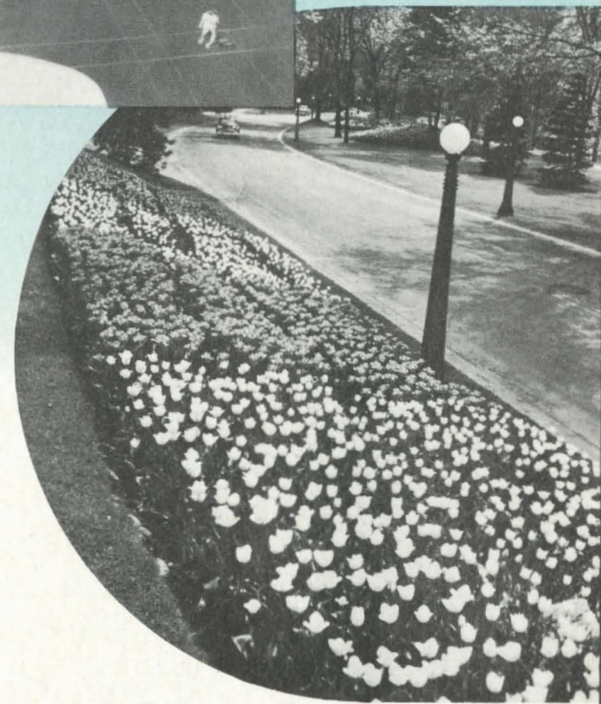


*The Chateau Laurier  
Hotel and National  
War Memorial.*

Nearby is Canadian National's handsome Chateau Laurier Hotel, separated from "Parliament Hill" by the picturesque and historic locks of the Rideau Canal. This waterway was built by British engineers under Colonel John By whose name the city bore (Bytown) before Queen Victoria selected it as the Capital. In the unsettled years after the War of 1812 the canal was thought necessary for defence purposes.

But now the only invaders are the holidaying Americans who annually join their Canadian neighbours and dot the canal with colorful pleasure craft. Winding through Ottawa, the canal is flanked by miles of federal parks and drives along which are some of the most beautiful flower beds found anywhere.

Adding to Ottawa's architectural beauty are imposing new Government buildings, all built in conformity with a long-range master plan for beautification of the entire National Capital area.



*Tulips, the gift of Holland,  
add beauty to Canada's Capital.*

*The famed Prince's Gate,  
main entrance to the  
Canadian National Exhibition.*



# TORONTO *The Meeting Place*

The City of Toronto, with a history pre-dating Canada's colonial era, was once called the "Meeting Place" by the Huron Indians. Now, as Ontario's capital and second largest city in Canada, Toronto still lives up to its old name. Tourists, business men, scientists and scholars from all parts of the world make Toronto a meeting place because of its many attractions and facilities.

Exhibition Park, covering 358 acres, makes Toronto one of the leading show centres of the world. Thousands visit the Park annually to attend such internationally known events as the Canadian National Exhibition, the Royal Agricultural Winter Fair and the Canadian National Sportsman's Show.

The University of Toronto, with affiliated colleges is one of the big centres of learning on the continent. Insulin was first discovered at the Connaught Laboratories here and it is here also that the national supply of anti-polio vaccine is being produced.

Other centres of culture and learning include the Royal Ontario Museum which contains one of

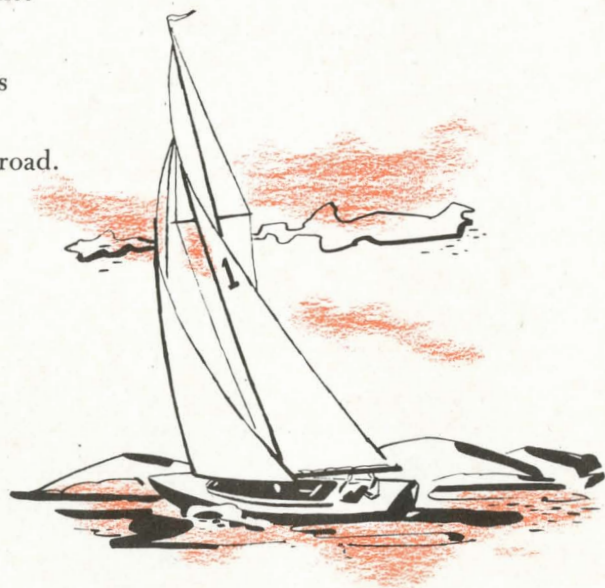
the world's great collections of Chinese works of art; the Toronto Art Gallery and Osgoode Hall, seat of Ontario's Supreme Court.

Toronto has a noted shopping centre. Large departmental stores and smaller specialty shops present the visitor with a wide variety of the nation's products as well as selected articles from abroad.

Historically, Toronto has a proud past. A monument in Exhibition Park marks the site of Fort Rouille, the first recorded white settlement, which was established by the French in 1749-50. Visitors to the original Fort York, built in 1794, can see the bullet scars inflicted on its blockhouses when American forces captured the fort in 1813.

Because of its geographic location, Toronto is the natural gateway to the province's northern resort areas as well as a half-way point between the eastern and southwestern areas.

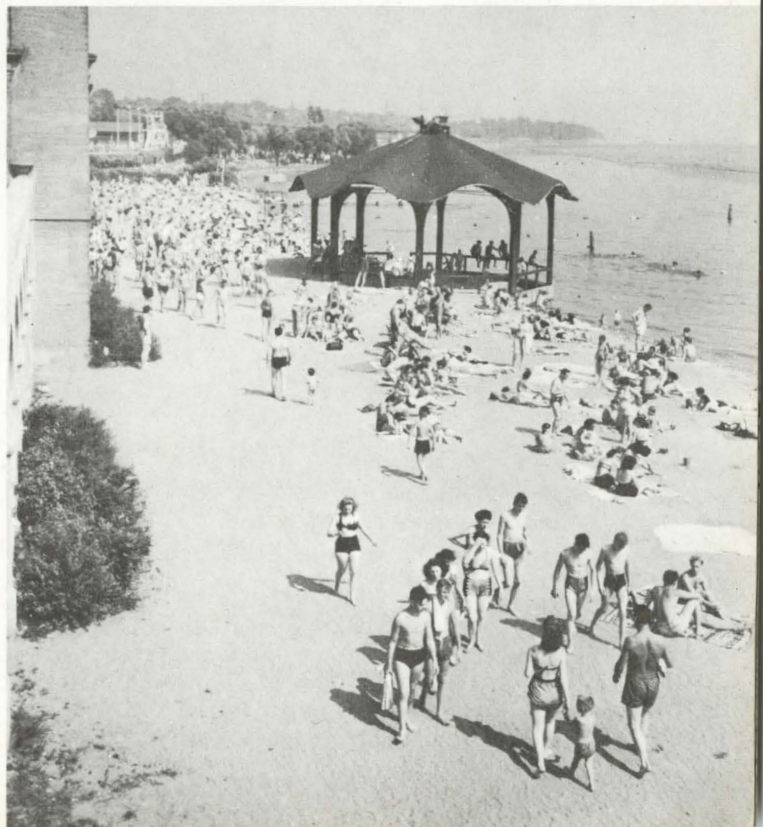
From Toronto, the Canadian National Railways provides convenient train service to all parts of Ontario.



*Casa Loma is one of Toronto's major tourist attractions.*



*The beach at Toronto's Sunnyside is a popular summer meeting place.*





# NIAGARA FALLS

## *One of the World's Wonders*

Niagara Falls and its immediate areas are rich in history and scenic beauty.

The famous falls, known as one of the Seven Wonders of the Modern World, and the foaming Niagara River with its Whirlpool have been viewed by many generations of honeymooners—to say nothing of ordinary folk. Blossoming fruit orchards throughout the Niagara Peninsula attract thousands of visitors annually. A feature of a Niagara Falls visit is the Niagara Parkway linking Niagara-on-the-Lake with Fort Erie, a distance of 17 miles. It includes the Queen Victoria Park and the Oakes Garden Theatre with its terraced rock gardens and pools at the Upper Arch Bridge to Niagara Falls, N.Y.





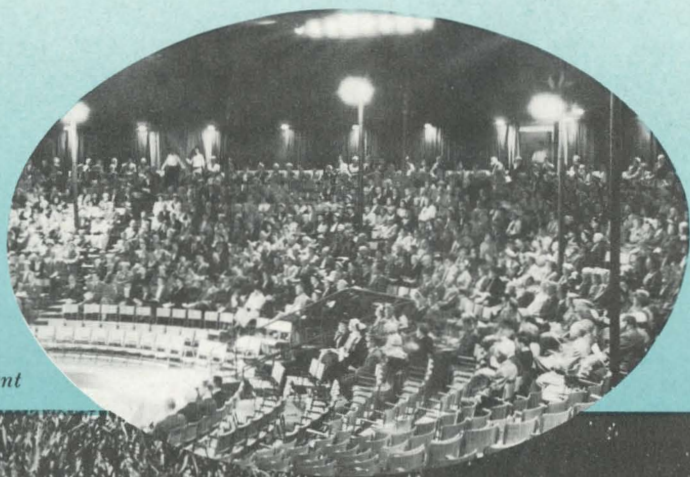
# STRATFORD

## *The Festival City*

Within recent years, Stratford, Ont., has established an international reputation as the home of an annual Shakespearean Festival.

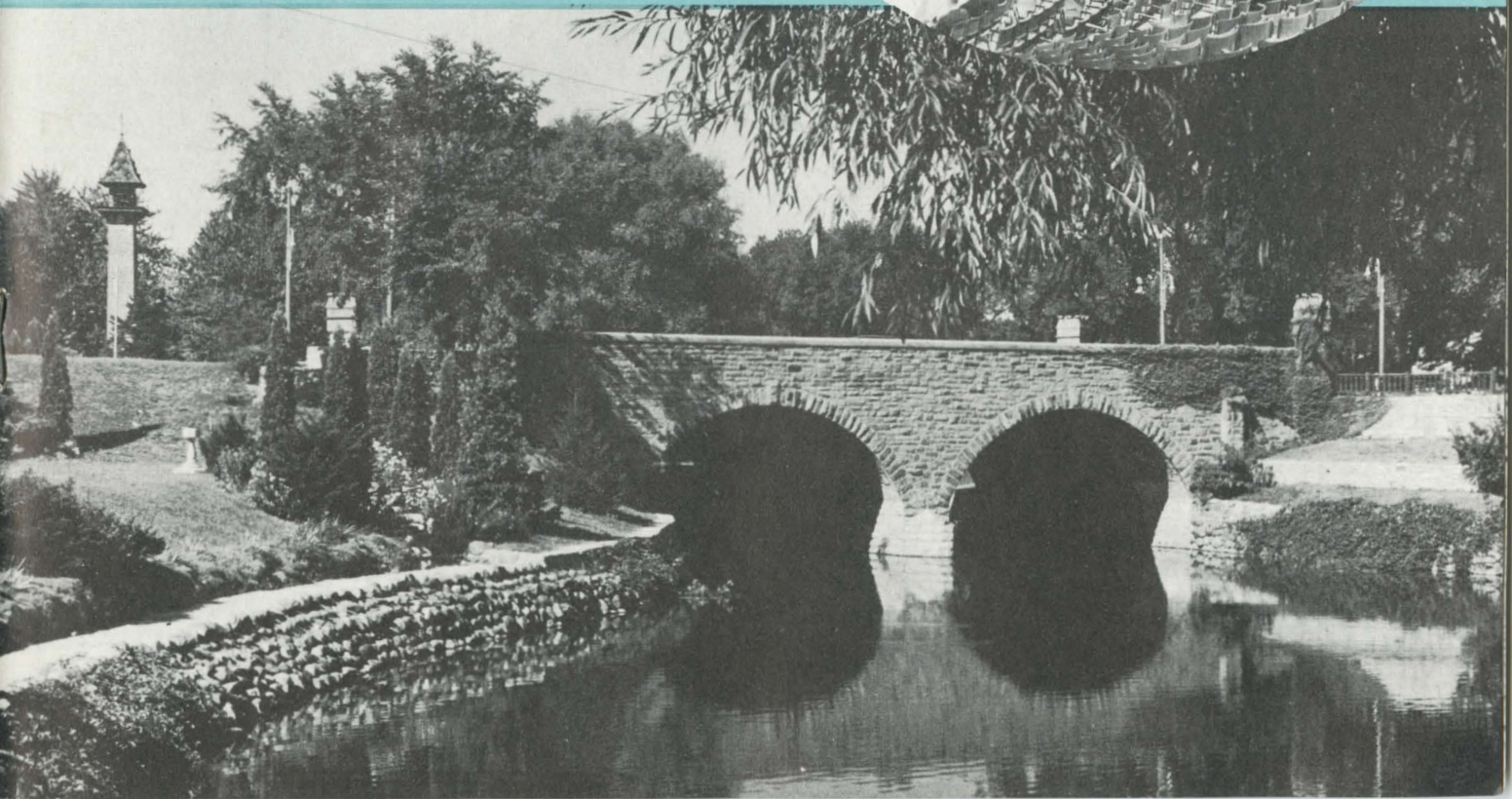
Thousands have come to this railway community located 88 miles west of Toronto to see Shakespeare's plays presented in a tent on an Elizabethan stage. A music festival was introduced for the first time in 1955 to run concurrently with the dramatic presentations.

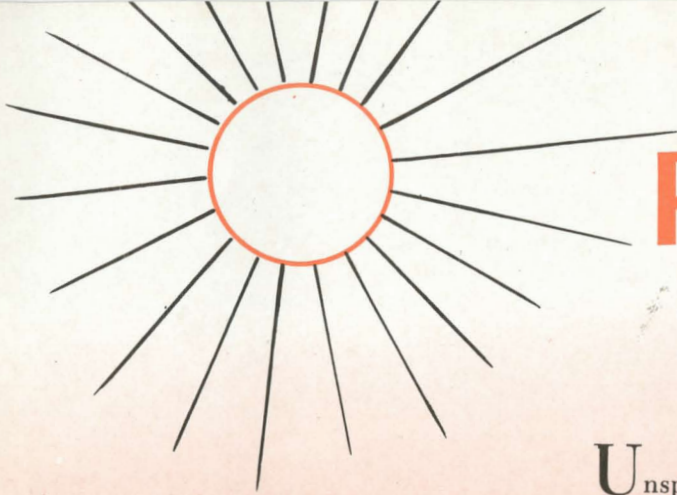
During the July-August season, Canadian National Railways offers all-expense tours to Stratford, will reserve theatre tickets, accommodation in Stratford and make all transportation arrangements.



*Stratford's Shakespearean Gardens.*

*The Festival theatre-tent*





# RECREATION

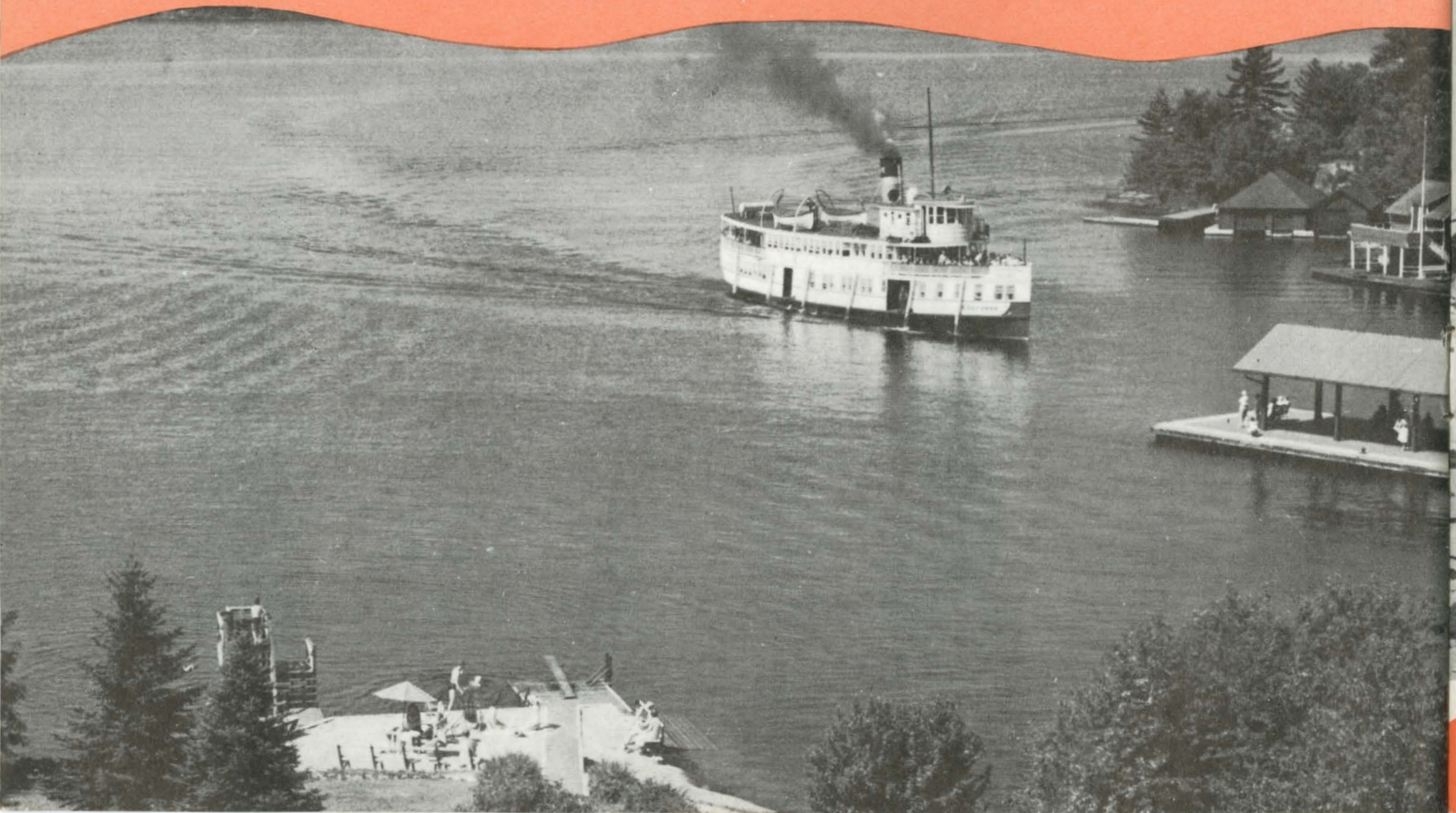
## *Fun under the Sun*

Unspoiled natural playgrounds with all facilities for a happy, sun-filled vacation in the out-of-doors await the visitor to Ontario.

Boat trips, golf, tennis, swimming and many other activities are available at a wide range of resorts where camps, bungalows, and summer hotels offer comfortable accommodation. With few exceptions, Ontario's vacation playgrounds are less than a day's journey over CNR lines from Toronto.

Across the province northeasterly from Lake Huron through Algonquin Park, the outdoor enthusiast will find a variety of resort areas. For those who prefer beach life there is a choice of fine sand beaches on Lake Huron and the southern shore of Georgian Bay. Such places as Grand Bend, Southampton, Port Elgin, Wasaga Beach and Thunder Bay are well known beach resorts.

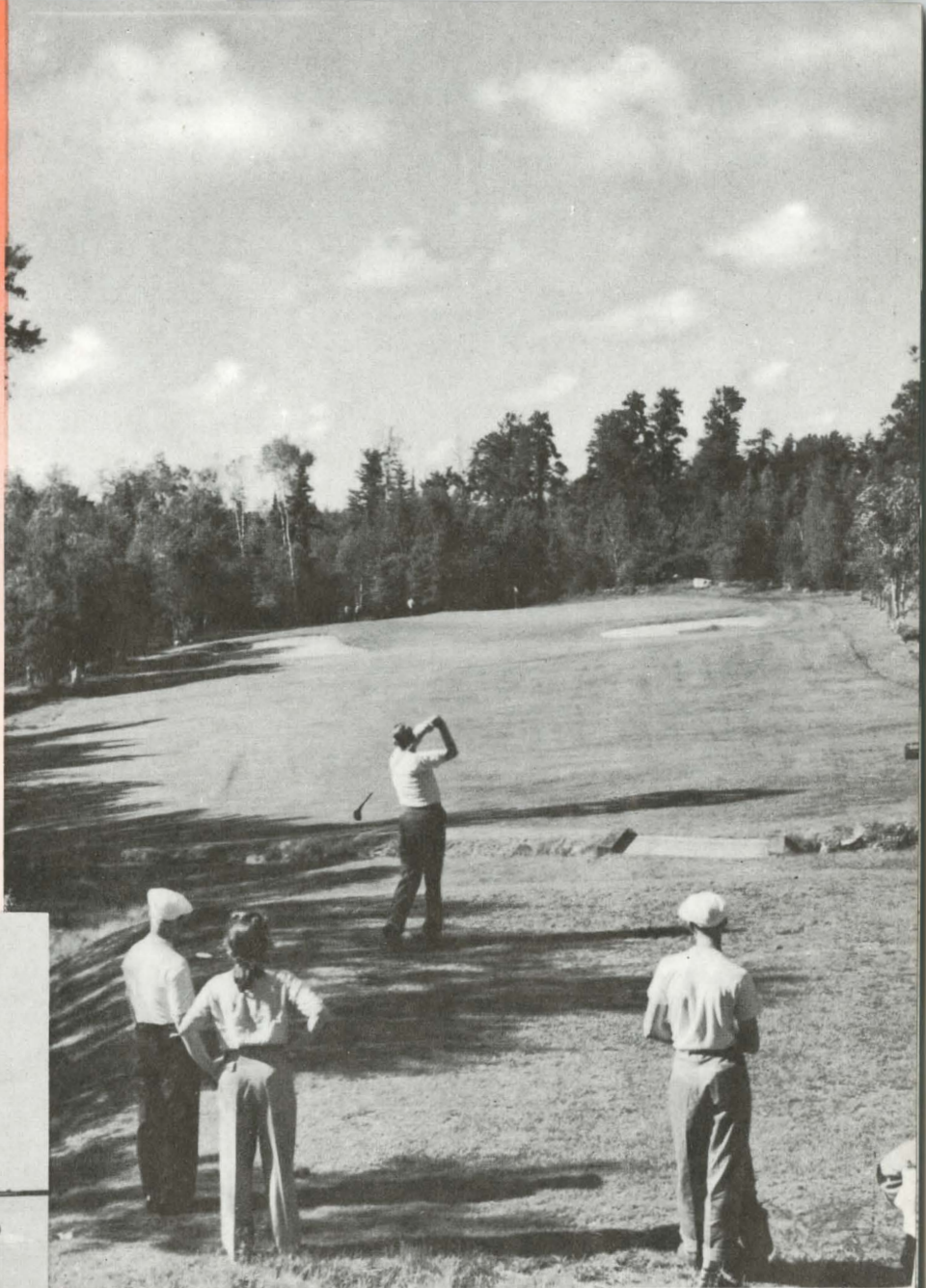
*Boat excursions are always popular.*



In Muskoka, sometimes called the "English Lake District" of Canada, the outdoorsman will find canoeing, motorboating, swimming, water excursions and golf. Here, too, the angler may enjoy bass and pickerel fishing.

Algonquin Park, some 200 miles northeast of Toronto, is one of the largest provincial public playgrounds and game reserves in Canada. Its 1,200 lakes connected by rivers and well-kept portages make it famous for long canoe trips as well as fishing.

Other popular resort areas include the Kawartha Lakes district and the Haliburton Highlands, Lake Simcoe and the Timagami Forest Reserve.



*Good, well planned golf courses are available at most resort areas and near all larger cities.*



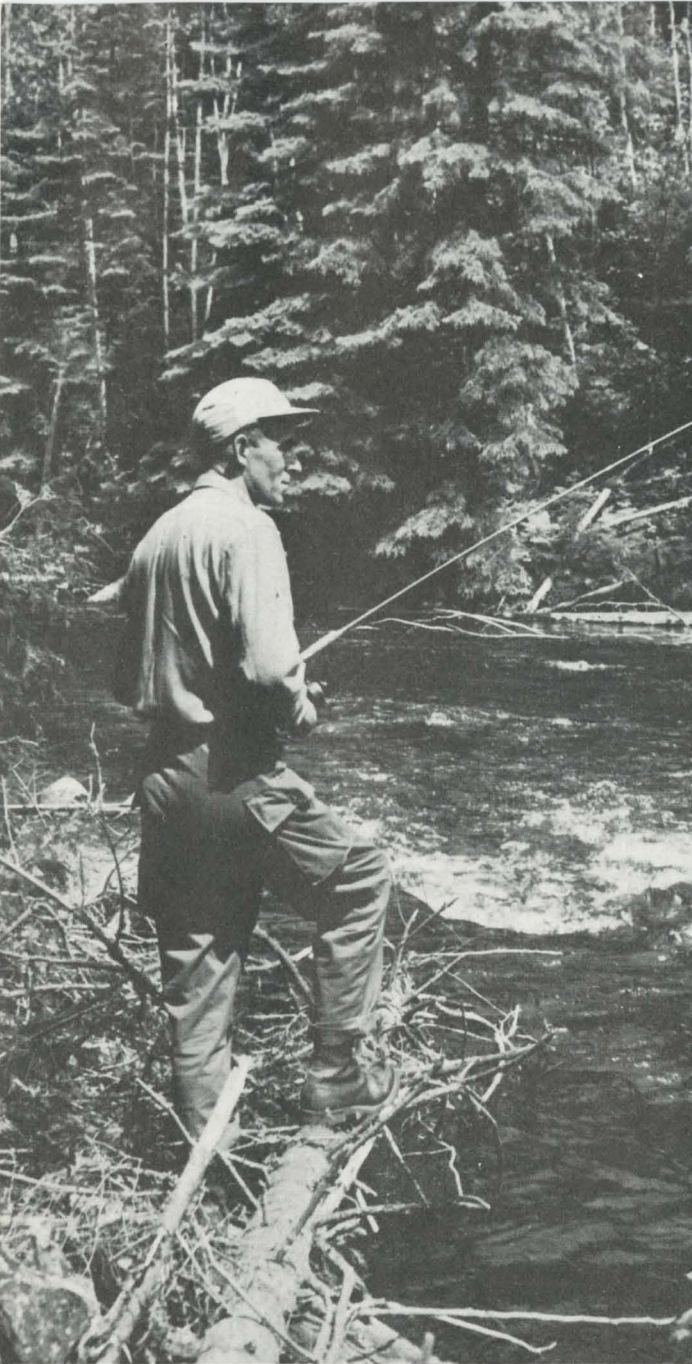
*Clean, safe bathing beaches are plentiful in Ontario.*



# FISHING

## *For the Big Ones*

There are an estimated 80,000 square miles of lakes and rivers in Ontario that offer the fisherman unlimited opportunity to land the big one of his dreams. Her horizons are so broad the angler has almost unlimited choice of terrain from the solitude of the great north woods to the meadowed streams in the settled south. Large lakes include all but one of the Great Lakes, as well as Lake Simcoe, Nipigon, Nipissing, Rainy Lake and Lake of the Woods. These, augmented by thousands of smaller lakes and streams, make possible nearly every variety of inland sport fishing. You can boat them or wade hip deep in trout streams or pull them in from shore with a bamboo pole. Game fish native to Ontario include large mouth bass, small mouth bass, pickerel, speckled trout, rainbow trout, lake trout, brown trout, perch, maskinonge and great northern pike.



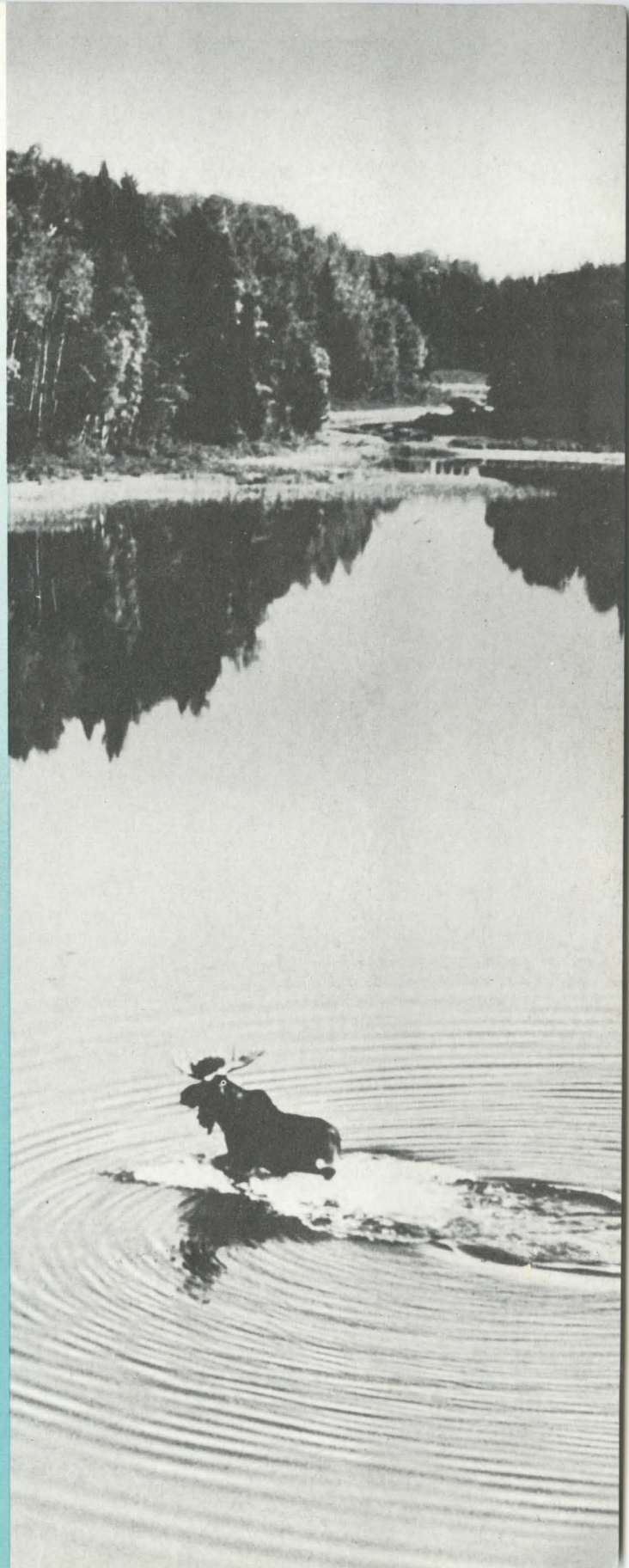
# HUNTING

## *A Man's Sport*

From Toronto, Montreal or Winnipeg, the hunter need not travel more than a night's journey to hunt big game in Ontario.

All along the northern route of the "Super Continental" are regions of lakes, waterways and bushlands where deer and bear and game birds such as grouse and duck are plentiful. This is "back of beyond" country in the sparsely settled Precambrian Shield, the outdoorsman's paradise. Further north along the CNR's northern transcontinental line, moose as well as geese are numerous.

Canadian National Railways passenger traffic department or any of its agents are well versed in the hunting potential in Ontario. All information is available on request. The CNR can help you and your party plan a successful hunting trip.



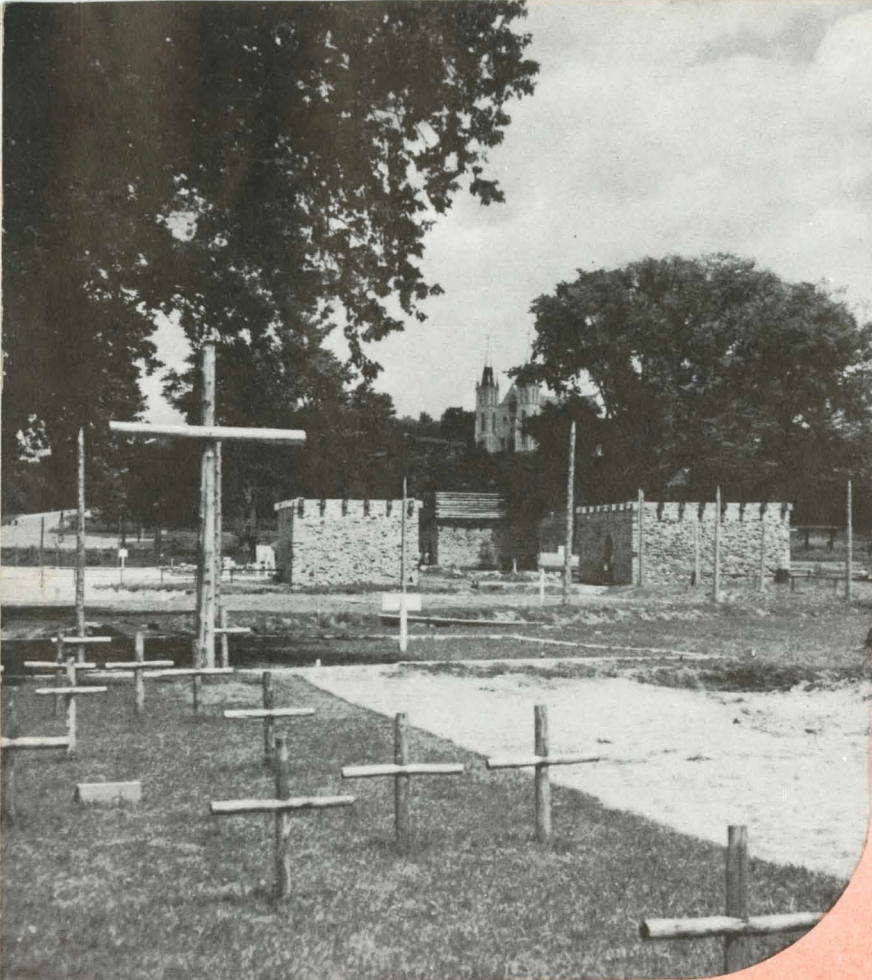
# HISTORIC *Landmarks*

**I**n the wide southern path of Ontario's early settlement the reminders of the province's history are everywhere.

Shrines, battlements and cairns tell of the Indian nations that fought and perished; of heroic missions and martyrs; of early French-English rivalries; of coming of the Empire Loyalists and the escape from bondage of American slaves; of pioneer settlers whose early efforts set the pattern of our modern day.

Tourists who go north to hunt and fish will find themselves on the routes of such 17th century explorers as Champlain, LaSalle, and Etienne Brule, discoverer of Lakes Ontario, Erie and Superior.

For the tourist with an interest in the past, the Georgian Bay area, the Niagara Peninsula, Kingston, Toronto and other points in southwestern Ontario should be on his itinerary.



*The famous Martyr's Shrine at Midland overlooks the historic cemetery and restored portions of old Fort Ste. Marie.*

*Much of Ontario's history is preserved in old Fort Henry at Kingston, Ont., where soldiers still wear the early British uniform.*



**TOURIST ACCOMMODATION IN ONTARIO RESORT REGIONS REACHED BY CANADIAN NATIONAL RAILWAYS**

NOTE:—The Canadian National Railways, in presenting the information contained herein, has taken every reasonable care to give authentic data. It will be readily understood the Railway is not in a position to assume responsibility for the class of accommodation provided by the places listed or the rates shown, except for Canadian National Hotels, and the information is therefore given as a guide as to cost and from which the intending visitor may make his own selection.

**TOURIST ACCOMMODATION IN ONTARIO RESORT REGIONS REACHED BY CANADIAN NATIONAL RAILWAYS**

**ONTARIO**

Particulars of accommodation in the following resort areas will be found under name of district or region, as listed below:—

- ALGONQUIN PARK
- GEORGIAN BAY
- KAWARTHA LAKES, TRENT RIVER AND HALIBURTON HIGHLANDS
- LAKES SIMCOE AND COUCHICHIING, SPARROW LAKE AND SEVERN RIVER
- MUSKOKA
- RIDEAU LAKES
- TEMAGAMI
- THOUSAND ISLANDS

and particulars of accommodation at other points will be found in general list, commencing on page 9.

Station or P.O. Address and Hotel or Boarding House	Proprietor or Manager	Distance from Station	No. of Rooms		RATES	
			With Bath	Without Bath	Per Day	Per Week

American Plan unless marked with "E" to indicate European Plan

Station or P.O. Address and Hotel or Boarding House	Proprietor or Manager	Distance from Station	No. of Rooms		RATES	
			With Bath	Without Bath	Per Day	Per Week

American Plan unless marked with "E" to indicate European Plan

Station or P.O. Address and Hotel or Boarding House	Proprietor or Manager	Distance from Station	No. of Rooms		RATES	
			With Bath	Without Bath	Per Day	Per Week

American Plan unless marked with "E" to indicate European Plan

Station or P.O. Address and Hotel or Boarding House	Proprietor or Manager	Distance from Station	No. of Rooms		RATES	
			With Bath	Without Bath	Per Day	Per Week

American Plan unless marked with "E" to indicate European Plan

**ONTARIO**

Particulars of accommodation in the following resort areas will be found under name of district or region, as listed below:—

- ALGONQUIN PARK
- GEORGIAN BAY
- KAWARTHA LAKES, TRENT RIVER AND HALIBURTON HIGHLANDS
- LAKES SIMCOE AND COUCHICHIING, SPARROW LAKE AND SEVERN RIVER
- MUSKOKA
- RIDEAU LAKES
- TEMAGAMI
- THOUSAND ISLANDS

and particulars of accommodation at other points will be found in general list, commencing on page 9.

Station or P.O. Address and Hotel or Boarding House	Proprietor or Manager	Distance from Station	No. of Rooms		RATES	
			With Bath	Without Bath	Per Day	Per Week

American Plan unless marked with "E" to indicate European Plan

Station or P.O. Address and Hotel or Boarding House	Proprietor or Manager	Distance from Station	No. of Rooms		RATES	
			With Bath	Without Bath	Per Day	Per Week

American Plan unless marked with "E" to indicate European Plan

Station or P.O. Address and Hotel or Boarding House	Proprietor or Manager	Distance from Station	No. of Rooms		RATES	
			With Bath	Without Bath	Per Day	Per Week

American Plan unless marked with "E" to indicate European Plan

Station or P.O. Address and Hotel or Boarding House	Proprietor or Manager	Distance from Station	No. of Rooms		RATES	
			With Bath	Without Bath	Per Day	Per Week

American Plan unless marked with "E" to indicate European Plan

**ONTARIO**

Particulars of accommodation in the following resort areas will be found under name of district or region, as listed below:—

- ALGONQUIN PARK
- GEORGIAN BAY
- KAWARTHA LAKES, TRENT RIVER AND HALIBURTON HIGHLANDS
- LAKES SIMCOE AND COUCHICHIING, SPARROW LAKE AND SEVERN RIVER
- MUSKOKA
- RIDEAU LAKES
- TEMAGAMI
- THOUSAND ISLANDS

and particulars of accommodation at other points will be found in general list, commencing on page 9.

Station or P.O. Address and Hotel or Boarding House	Proprietor or Manager	Distance from Station	No. of Rooms		RATES	
			With Bath	Without Bath	Per Day	Per Week

American Plan unless marked with "E" to indicate European Plan

Station or P.O. Address and Hotel or Boarding House	Proprietor or Manager	Distance from Station	No. of Rooms		RATES	
			With Bath	Without Bath	Per Day	Per Week

American Plan unless marked with "E" to indicate European Plan

Station or P.O. Address and Hotel or Boarding House	Proprietor or Manager	Distance from Station	No. of Rooms		RATES	
			With Bath	Without Bath	Per Day	Per Week

American Plan unless marked with "E" to indicate European Plan

Station or P.O. Address and Hotel or Boarding House	Proprietor or Manager	Distance from Station	No. of Rooms		RATES	
			With Bath	Without Bath	Per Day	Per Week

American Plan unless marked with "E" to indicate European Plan

**ONTARIO**

Particulars of accommodation in the following resort areas will be found under name of district or region, as listed below:—

- ALGONQUIN PARK
- GEORGIAN BAY
- KAWARTHA LAKES, TRENT RIVER AND HALIBURTON HIGHLANDS
- LAKES SIMCOE AND COUCHICHIING, SPARROW LAKE AND SEVERN RIVER
- MUSKOKA
- RIDEAU LAKES
- TEMAGAMI
- THOUSAND ISLANDS

and particulars of accommodation at other points will be found in general list, commencing on page 9.

Station or P.O. Address and Hotel or Boarding House	Proprietor or Manager	Distance from Station	No. of Rooms		RATES	
			With Bath	Without Bath	Per Day	Per Week

American Plan unless marked with "E" to indicate European Plan

Station or P.O. Address and Hotel or Boarding House	Proprietor or Manager	Distance from Station	No. of Rooms		RATES	
			With Bath	Without Bath	Per Day	Per Week

American Plan unless marked with "E" to indicate European Plan

Station or P.O. Address and Hotel or Boarding House	Proprietor or Manager	Distance from Station	No. of Rooms		RATES	
			With Bath	Without Bath	Per Day	Per Week

American Plan unless marked with "E" to indicate European Plan

Station or P.O. Address and Hotel or Boarding House	Proprietor or Manager	Distance from Station	No. of Rooms		RATES	
			With Bath	Without Bath	Per Day	Per Week

American Plan unless marked with "E" to indicate European Plan

**ONTARIO**

Particulars of accommodation in the following resort areas will be found under name of district or region, as listed below:—

- ALGONQUIN PARK
- GEORGIAN BAY
- KAWARTHA LAKES, TRENT RIVER AND HALIBURTON HIGHLANDS
- LAKES SIMCOE AND COUCHICHIING, SPARROW LAKE AND SEVERN RIVER
- MUSKOKA
- RIDEAU LAKES
- TEMAGAMI
- THOUSAND ISLANDS

and particulars of accommodation at other points will be found in general list, commencing on page 9.

Station or P.O. Address and Hotel or Boarding House	Proprietor or Manager	Distance from Station	No. of Rooms		RATES	
			With Bath	Without Bath	Per Day	Per Week

American Plan unless marked with "E" to indicate European Plan

Station or P.O. Address and Hotel or Boarding House	Proprietor or Manager	Distance from Station	No. of Rooms		RATES	
			With Bath	Without Bath	Per Day	Per Week

American Plan unless marked with "E" to indicate European Plan

Station or P.O. Address and Hotel or Boarding House	Proprietor or Manager	Distance from Station	No. of Rooms		RATES	
			With Bath	Without Bath	Per Day	Per Week

American Plan unless marked with "E" to indicate European Plan

Station or P.O. Address and Hotel or Boarding House	Proprietor or Manager	Distance from Station	No. of Rooms		RATES	
			With Bath	Without Bath	Per Day	Per Week

American Plan unless marked with "E" to indicate European Plan

**ONTARIO**

Particulars of accommodation in the following resort areas will be found under name of district or region, as listed below:—

- ALGONQUIN PARK
- GEORGIAN BAY
- KAWARTHA LAKES, TRENT RIVER AND HALIBURTON HIGHLANDS
- LAKES SIMCOE AND COUCHICHIING, SPARROW LAKE AND SEVERN RIVER
- MUSKOKA
- RIDEAU LAKES
- TEMAGAMI
- THOUSAND ISLANDS

and particulars of accommodation at other points will be found in general list, commencing on page 9.

Station or P.O. Address and Hotel or Boarding House	Proprietor or Manager	Distance from Station	No. of Rooms		RATES	
			With Bath	Without Bath	Per Day	Per Week

American Plan unless marked with "E" to indicate European Plan

Station or P.O. Address and Hotel or Boarding House	Proprietor or Manager	Distance from Station	No. of Rooms		RATES	
			With Bath	Without Bath	Per Day	Per Week

American Plan unless marked with "E" to indicate European Plan

Station or P.O. Address and Hotel or Boarding House	Proprietor or Manager	Distance from Station	No. of Rooms		RATES	
			With Bath	Without Bath	Per Day	Per Week

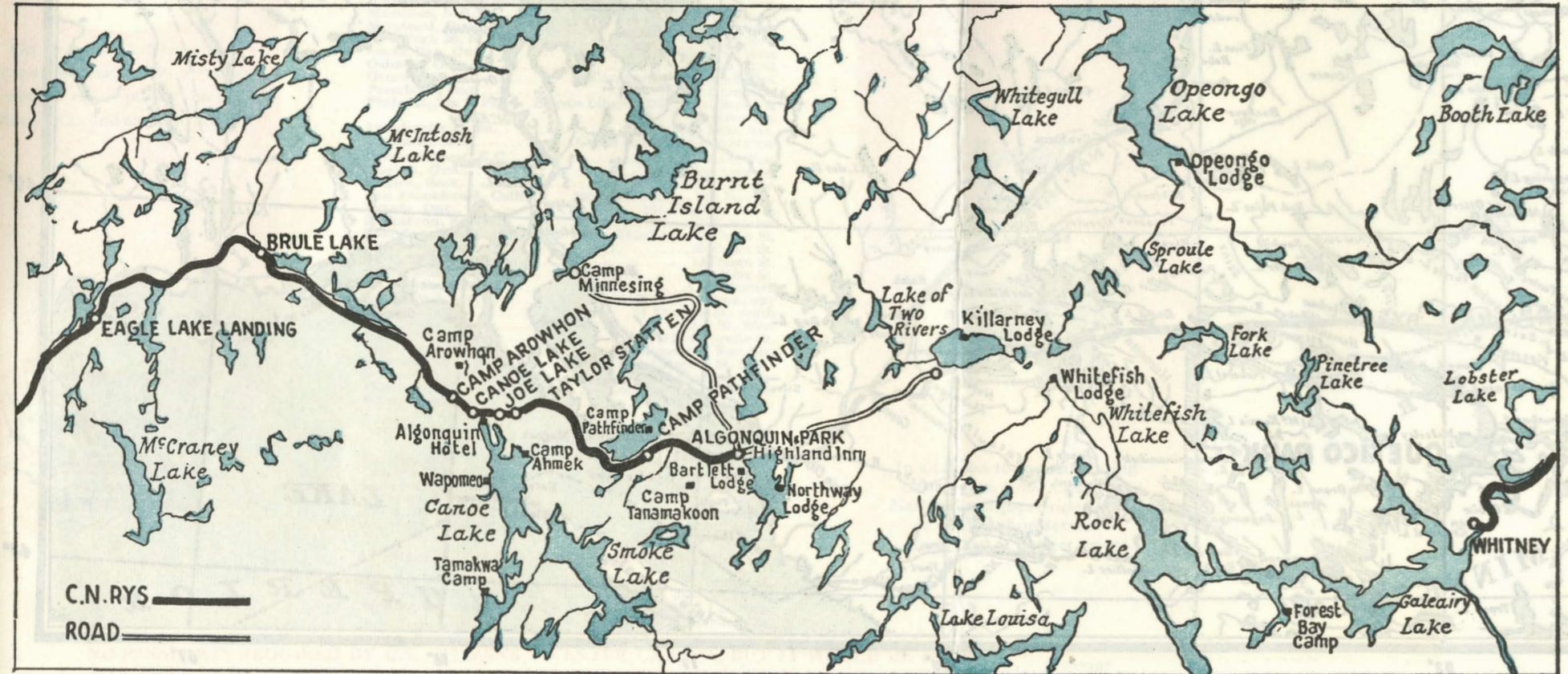
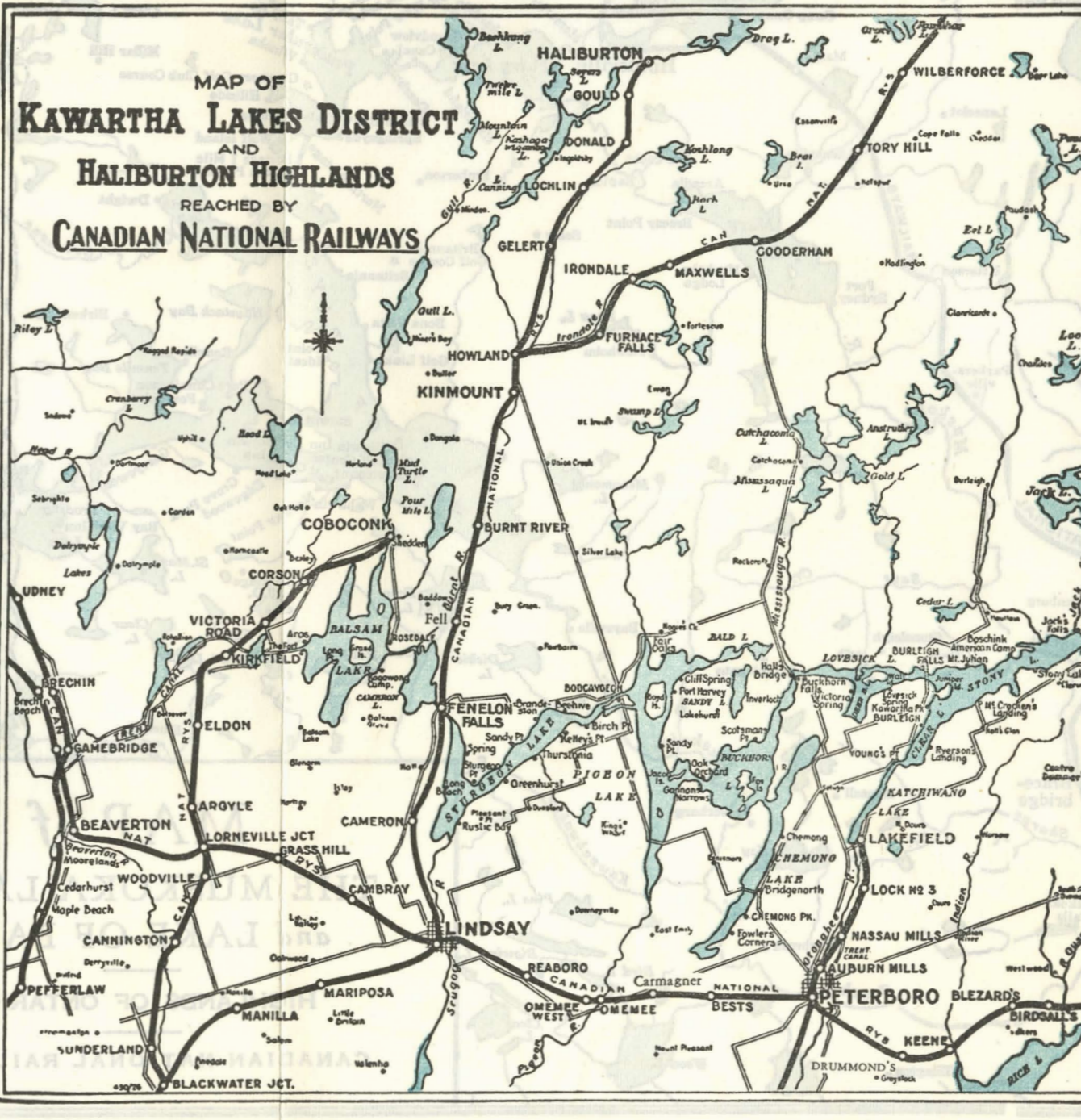
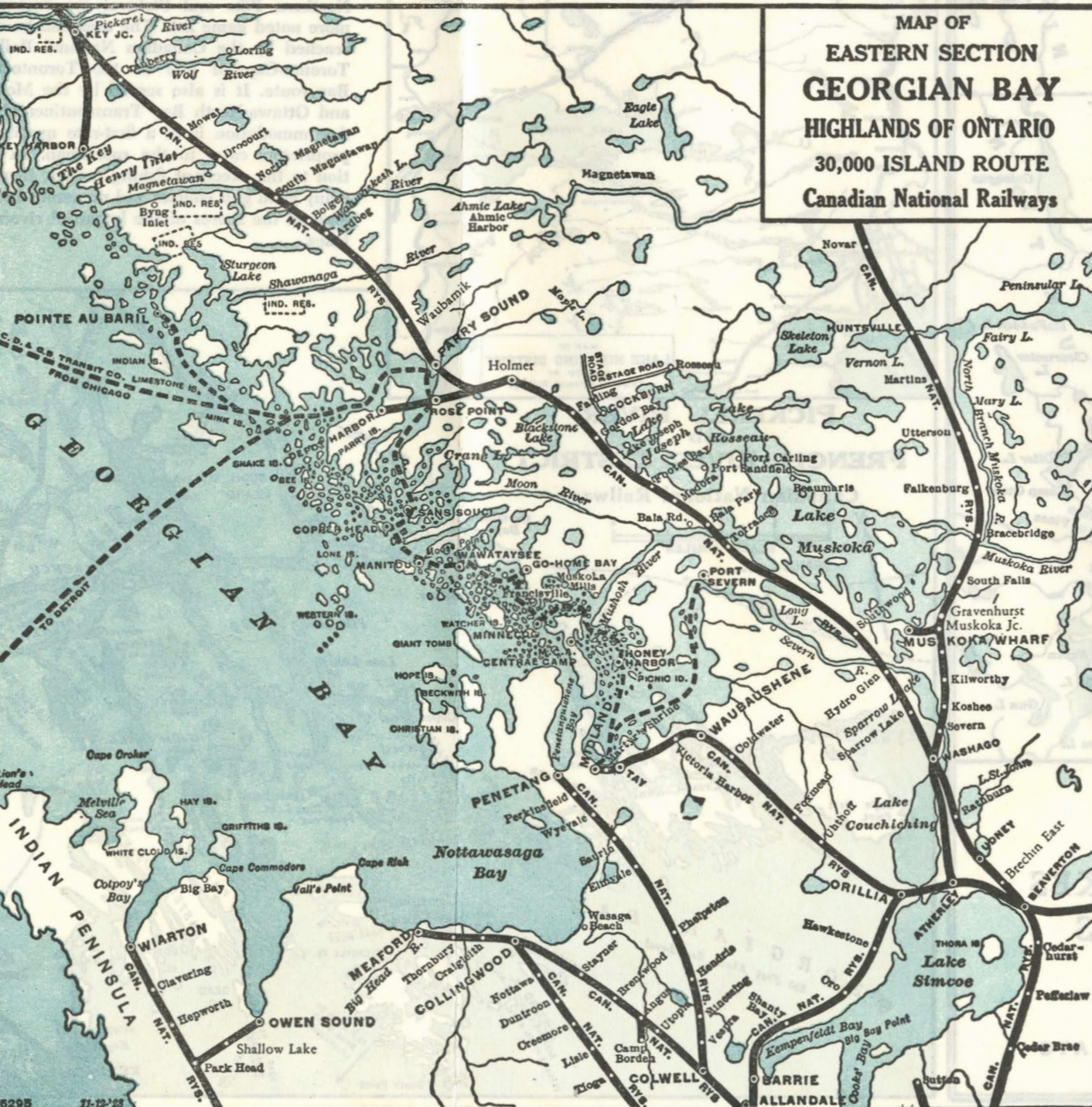
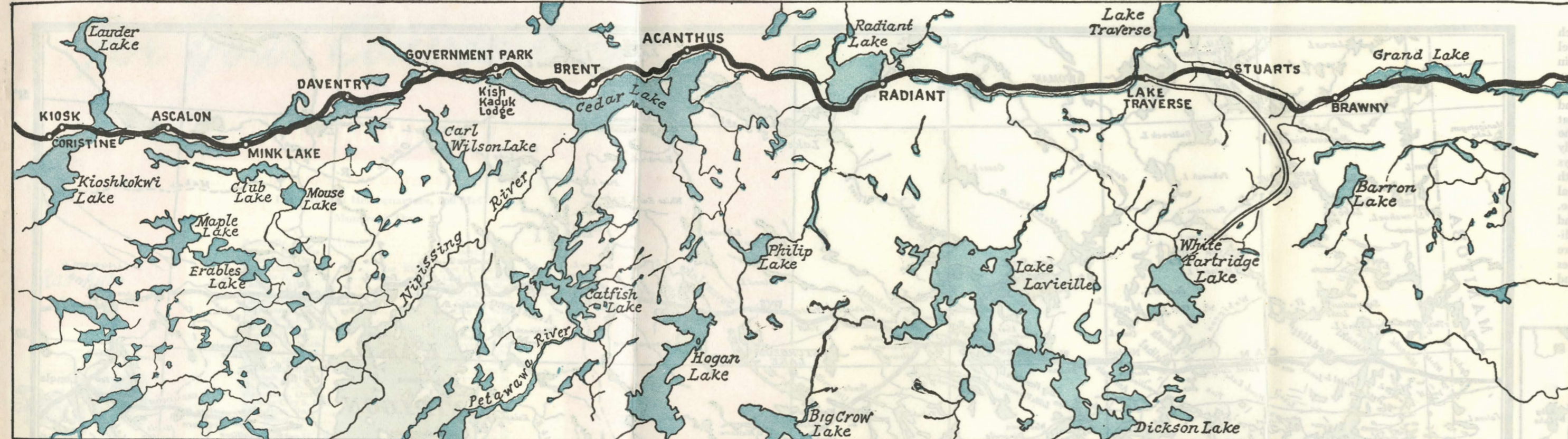
American Plan unless marked with "E" to indicate European Plan

Station or P.O. Address and Hotel or Boarding House	Proprietor or Manager	Distance from Station	No. of Rooms		RATES	
			With Bath	Without Bath	Per Day	Per Week

American Plan unless marked with "E" to indicate European Plan







**ALGONQUIN PARK**

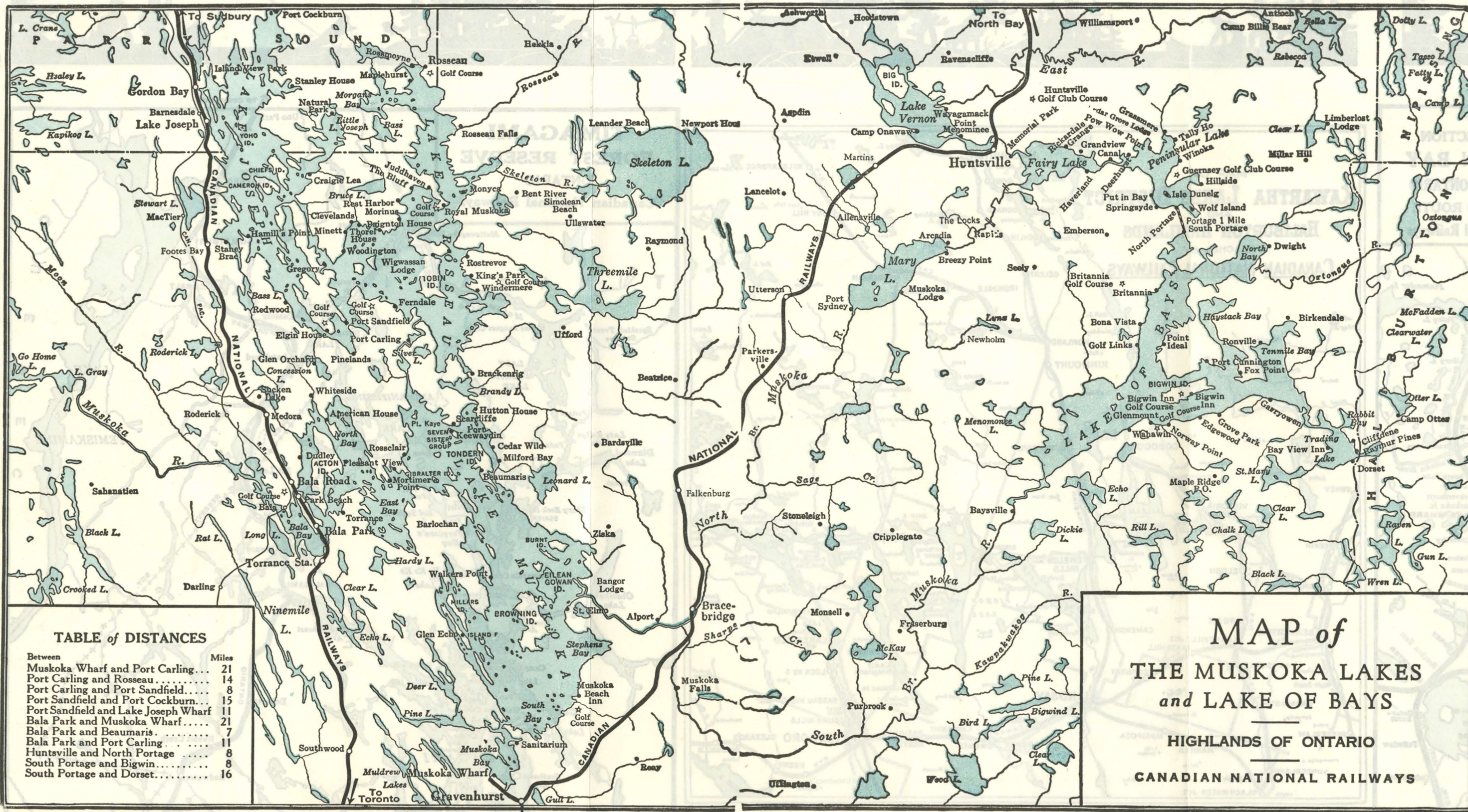
Algonquin Park, comprising 2,700 square miles in the northeast section of Ontario, is one of the oldest and largest provincial public playgrounds and game reserves in Canada. It is readily accessible through the north and south boundaries by the lines of the Canadian National Railways via Toronto and Montreal.

In the southern section of the park there are a number of long-established boys' and girls' camps and excellent general accommodation is available in both northern and southern sections.

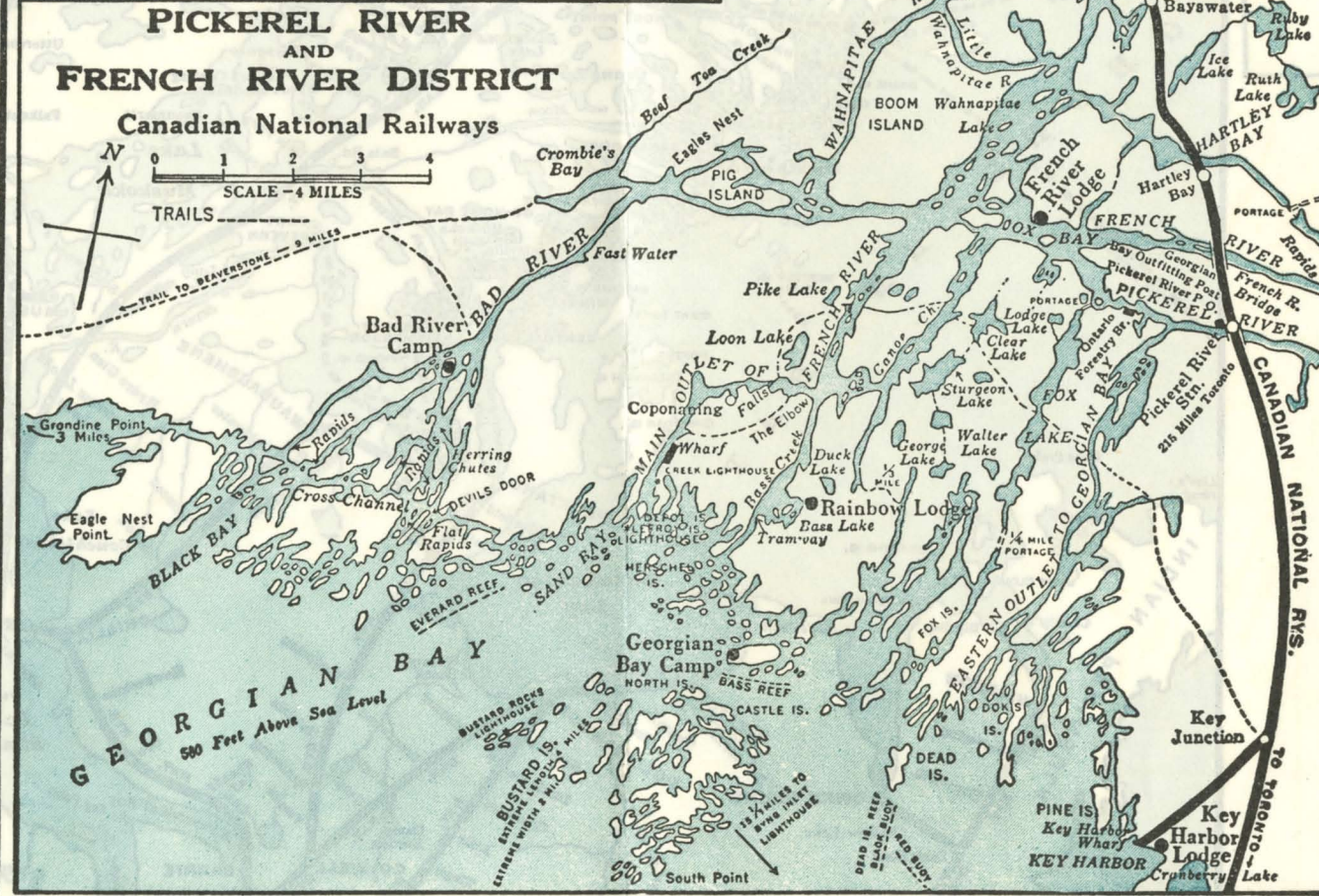
Algonquin Park has long been popular as a fishing and canoe trip area. Its boundaries enclose more than 1,200 lakes linked by numerous rivers, streams and portages into a great variety of pathways by which the canoeist can explore it. Trails are well marked and camp sites are plentiful.

Fishing reaches spectacular proportions in Algonquin Park and depending upon the section visited, the types of game fish include speckled trout, lake trout, muskellunge, pickerel, black bass (large and small mouth) and pan fish of various types. Fast water fishing for speckled trout in the spring is particularly good in the northern part of the park.

Firearms are prohibited in Algonquin but it is a paradise for those who hunt with a camera.



The District around Lake Nipissing, which is watered by the famous French and Pickereel rivers, was known intimately by Champlain and the missionaries of New France. Today, it is an unsurpassed holiday playground and includes some of the finest fishing to be found in Ontario. Small mouth Bass, Muskies, Great Northern Pike and Pickereel are among the more noted game fish. The area can be easily reached by the Canadian National Railways Toronto-Capreol line or the Toronto-North Bay route. It is also served by the Montreal and Ottawa-North Bay Transcontinental line. Accommodation is of a first-rate quality and proprietors cater to the sportsman. In addition to the excellent fishing resorts, there are many good golf courses and numerous beaches about the shores of the beautiful rivers and lakes.



# For Your Convenience...

## CANADIAN NATIONAL RAILWAYS PASSENGER AGENTS

### IN CANADA AND UNITED STATES

Traffic Department Headquarters, 360 McGill St.,  
Montreal, Que.

### Rail-Auto Travel



Go by train . . . Rent a new car at destination. By arrangement at major points you can Rent-a-Car and use it on arrival.

Belleville, Ont.	346 Front St.
Boston 16, Mass.	497 Boylston St.
Brantford, Ont.	153 Colborne St.
Brockville, Ont.	Cor. King & East Market Sts.
Buffalo 2, N.Y.	13 West Genesee
Calgary, Alta.	212 Eighth Ave. West
Campbellton, N.B.	Roseberry & O'Leary Sts.
Charlottetown, P.E.I.	CNR Station
Chatham, Ont.	220 King St. West
Chicago 3, Ill.	103 West Adams St.
Cincinnati 2, Ohio	206 Dixie Terminal Bldg.
Cornwall, Ont.	11 Second St. East
Detroit 26, Mich.	131 W. Lafayette Blvd.
Edmonton, Alta.	Cor. Jasper & 100th Sts.
Flint 3, Mich.	1639 Mott Foundation Bldg.
Fredericton, N.B.	580 Queen St.
Guelph, Ont.	67 Wyndham St.
Halifax, N.S.	505-507 Barrington St.
Hamilton, Ont.	7 James St. North
Kansas City 6, Mo.	414 Fairfax Bldg., 101 West Eleventh St.
Kingston, Ont.	115 Princess St.
Kitchener, Ont.	19 King St. West
London, Ont.	430 Richmond St.
Los Angeles 17, Calif.	510 West 6th St.
Milwaukee 3, Wis.	Rm. 502, 231 West Wisconsin Ave.
Minneapolis 2, Minn.	1040 Rand Tower, 527 Marquette Ave.
Moncton, N.B.	CNR Station
Montreal, Que.	384 St. James St. West
New York 20, N.Y.	630 Fifth Ave.
North Bay, Ont.	203 Main St. West
Oshawa, Ont.	3 King St. West
Ottawa, Ont.	Cor. Sparks & Metcalfe Sts.
Peterboro, Ont.	324 George St.
Philadelphia 7, Pa.	Lincoln Liberty Bldg., Cor. Broad & Chestnut Sts.
Pittsburgh 22, Pa.	355 Fifth Ave.
Portland, Me.	Grand Trunk Railway Station
Prince Rupert, B.C.	528 Third Ave. West
Quebec, Que.	10 Ste. Anne St.
Regina, Sask.	Union Station
San Francisco 8, Calif.	502 Shreve Bldg., 210 Post St.
Sarnia, Ont.	131 Front St. North
Saskatoon, Sask.	CNR Station
Seattle 1, Wash.	214 Vance Bldg., Third Ave. & Union St.
Sherbrooke, Que.	50 Depot St.
St. Catharines, Ont.	13 Queen St.
Saint John, N.B.	49 King St.
St. John's, Nfld.	CNR Station
St. Louis 2, Mo.	314 North Broadway
Sudbury, Ont.	41 Durham St. South
Toronto 1, Ont.	6 King St. West
Vancouver, B.C.	527 Granville St.
Victoria, B.C.	Cor. Government & Fort Sts.
Washington 5, D.C.	922 Fifteenth St. N.W.
Windsor, Ont.	364 Ouellette Ave.
Winnipeg, Man.	Cor. Portage & Main St.
Woodstock, Ont.	414 Dundas St.

### EUROPEAN REPRESENTATIVES

London, S.W. 1, Eng.	17-19 Cockspur St.
London, E.C.2, Eng.	Orient House, 42-45 New Broad St.
Liverpool, Eng.	Cunard Bldg., Water St.
Glasgow, C.2, Scotland	9 Bothwell St.
Paris, France	1 Rue Scribe
Antwerp, Belgium	9 Koolkaai

### AUSTRALIA AND NEW ZEALAND REPRESENTATIVES

Sydney, Australia	"Scottish House", 19 Bridge St.
Melbourne, Australia	"Collins House", 360 Collins St.
Wellington, New Zealand	Guardian Assurance Co. Bldg. Cor. Featherston & Brandon Sts.

### Budget Prices



In addition to regular dining car service, some Canadian National trains provide Dinette or Coffee Shop service — good food at budget prices.



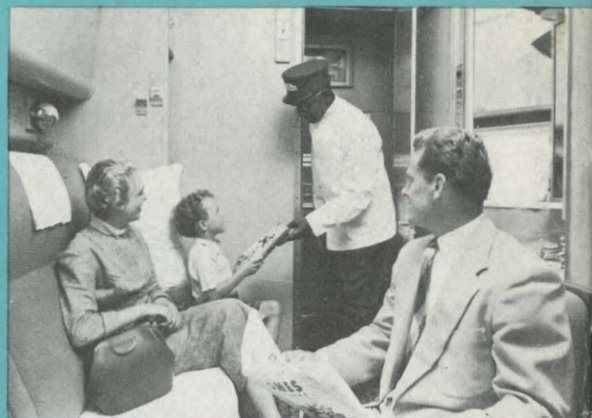
NO PASSPORTS REQUIRED BY U.S. CITIZENS TO ENTER CANADA, BUT IT WOULD BE HELPFUL TO CARRY SOME PROOF OF UNITED STATES CITIZENSHIP, SUCH AS A BIRTH CERTIFICATE

# NEW TRAVEL COMFORT

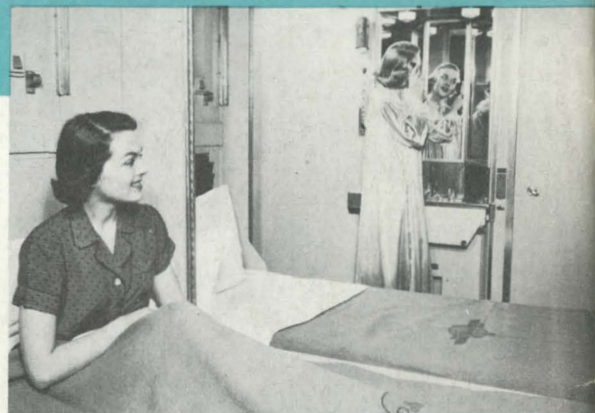
**T**ourists who use Canadian National trains on their Ontario vacation will get a new experience in travel comfort and convenience. Throughout a wide range of accommodation, modern design and engineering skill have incorporated the finest available travel features in the railway's new passenger equipment.

The Canadian National's new 80-passenger all steel coaches offer good modern transportation priced within easy reach of the average pocket book. Compartments, double bedrooms and drawing rooms, offer ideal reasonably priced family travel. Dinette and coffee shop service cars are open throughout the day for snacks and full course meals at budget prices.

On your next Ontario vacation, plan to travel Canadian National for comfort, relaxation and economy. You get more for your travel dollar when you go by train.



*Compartments are ideal for family travel.*



*Paired bedrooms become a spacious day suite for companionable travel.*



*Dinette cars offer a wide range of food at popular prices.*



SERVING ALL TEN PROVINCES OF CANADA