



**MONTREAL**  
**1960**

## *PLEASURE-PLANNED FOR YOUR VACATION ENJOYMENT!*

'Simplicity' best describes the "MAPLE LEAF 'PACKAGE' TOUR" way of travelling. The best in travel comfort, the best hotels, the best in sightseeing, the best way to use your precious holiday time and yet leave ample leeway for the unhurried pleasure of being 'foot-loose and fancy free'!

Just think, travelling without a care in the world, doing all the things you've wanted to do, with all arrangements made in advance

CANADIAN NATIONAL RAILWAYS

# PACKAGE TOURS

FOR A HAPPY HOLIDAY !



and knowing the cost beforehand. That's the "Maple Leaf 'Package' Tour" way to travel.

Prices include transportation, first class hotel accommodation, sightseeing and other features, also dining car and other meals as shown in tour descriptions.

The experienced traveller knows that it pays to book early, so why not make your choice NOW. Your Canadian National ticket agent, or travel agent, will be pleased to arrange a "Maple Leaf Tour" for you.

## INDEX

---

Tour	Page
No. M-1	Week-end at the Chateau Laurier in Ottawa..... 6
No. M-3	4-Day Tour—Montreal to New York City..... 6
No. M-4	4-Day Tour—Montreal to Thousand Islands, Toronto and Ottawa..... 7
No. M-5	4-Day Tour—Montreal to Toronto and Niagara Falls, Ontario..... 8
No. M-9	5-Day Tour—Montreal to Gaspé Peninsula..... 9
No. M-12	8-Day Tour—Montreal to New York and Washington..... 10
No. M-14	9-Day Tour—Montreal to Toronto, Chicago and Detroit..... 11
No. M-18	8-Day Tour—Montreal to New Brunswick, Nova Scotia, Land of Evangeline and Prince Edward Island..... 12
No. M-20	12-Day Tour—Montreal to Gaspé Peninsula, New Brunswick, Nova Scotia, Land of Evangeline and Prince Edward Island..... 13
No. M-21	8-Day Tour—Montreal to Nova Scotia, Halifax and Cabot Trail..... 16
No. M-23	12-Day Tour—Montreal to Gaspé Peninsula, Nova Scotia and Cabot Trail..... 17
No. M-26	15-Day Tour—Montreal to Victoria..... 18
No. M-27	15-Day Tour—Montreal to Seattle, Washington..... 19
No. M-29	14-Day Tour—Montreal to California..... 20
No. M-30	21-Day Circle Tour—Montreal to California..... 21
No. M-31	12-Day Tour—Montreal to Jasper Park Lodge..... 23
No. M-32	16-Day Tour—Montreal to Vancouver, Victoria and Jasper..... 24
No. M-33	12-Day Tour—Montreal to Jasper, Lake Louise and Banff..... 26
General Information.....	4
Map of Canada and the United States.....	14-15

---

## GENERAL INFORMATION

All train schedules are shown in **Standard Time**.

A detailed itinerary is provided from starting point of each Package Tour.

Meals are included in cost of tour **ONLY** as indicated.

Tour prices do not include gratuities (unless specified), transfers between stations and hotels, etc.

Baggage allowance — 150 lbs. for each adult rail ticket.

To permit completion of arrangements and ticketing, reservations should be made at least 10 days in advance.

Family Plan Fares can be obtained where applicable. See your rail or travel agent for details.

## NOTICE

The tours listed in this booklet are basically designed for the summer season and train schedules are those in effect April 24th to October 23rd, 1960. Some of these tours are also available during the spring, fall and winter seasons and include sightseeing tours in effect during those periods.

***Prices are based on passenger and sleeping car tariffs in effect January 1st, 1960, and are subject to any subsequent change during the current year.***

This booklet is also available in the French language.

Peace Tower and Parliament  
Buildings in Canada's capital, Ottawa.



## Maple Leaf Tour No. M-1

---

### WEEK-END AT THE CHATEAU LAURIER IN OTTAWA

Single \$26.00

2 in one room \$23.00 each

3 in one room \$21.00 each

---

FRIDAY — Lv. **Montreal** . . . . . 8.30 PM Canadian National Railways (Central Station).  
Ar. **Ottawa** . . . . . 10.55 PM Canadian National Railways (Union Station).

A room with bath is provided for two nights at the Chateau Laurier.

SATURDAY — A two-hour tour of the city and district is provided. Points of interest visited include: main business section, Parliament Buildings, embassies of several countries, government buildings, Rideau Hall — residence of Canada's Governor General — Rockcliffe Park, historical sites and monuments.

SUNDAY — Lv. **Ottawa** . . . . . 6.30 PM Canadian National Railways (Union Station).  
Ar. **Montreal** . . . . . 9.50 PM Canadian National Railways (Central Station).

## Maple Leaf Tour No. M-3

---

### 4-DAY TOUR—MONTREAL TO NEW YORK CITY

Single \$55.00

2 in one room \$52.00 each

3 in one room \$49.00 each

---

1ST DAY — Lv. **Montreal** . . . . . 8.00 PM Canadian National Railways (Central Station).

2ND DAY — Ar. **New York** . . . . . 7.00 AM New Haven Railroad (Pennsylvania Station).

A room with bath is provided for two nights at a first class hotel, also the following sightseeing tours:

2ND DAY — **BUS TOUR**—A two-hour 30-minute tour of lower New York and Chinatown, including Times Square, Greenwich Village, the Bowery, lower East Side and Civic Center, Wall Street sector, United Nations headquarters, Rockefeller Centre, etc.

**BOAT CRUISE**—A three-hour cruise via DAY LINE SIGHTSEEING around Manhattan Island. A thrilling cruise featuring a view of Manhattan's famous skyline.

**EMPIRE STATE OBSERVATORY**—A visit to the top of the 102-storey Empire State Building where a panoramic view of the city and surrounding territory may be seen.

**NBC GUIDED TOUR**—A one-hour escorted tour of Radio City NBC Studio-Television facilities leaves from the NBC Guided Tour Lounge, mezzanine floor, RCA Building, 30 Rockefeller Plaza, every 20 minutes.

4TH DAY — Lv. **New York** . . . . . 7.25 PM New Haven Railroad (Pennsylvania Station).

5TH DAY — Ar. **Montreal** . . . . . 7.35 AM Canadian National Railways (Central Station).

**4-DAY TOUR—MONTREAL TO THOUSAND ISLANDS,  
TORONTO AND OTTAWA**

Effective from June 20th to September 12th inclusive.

Single \$75.00

2 in one room \$69.00 each

3 in one room \$65.00 each

1ST DAY — Lv. **Montreal** . . . . . 8.30 AM Canadian National Railways (Central Station).  
Ar. **Brockville** . . . . . 10.45 AM Canadian National Railways.

Transfer is provided from station to dock.

Boat leaves at 1.30 PM (DST) for a complete 75-mile, four-hour tour of the **Thousand Islands**. It takes in the unsurpassed natural beauty of the Canadian islands, from Brockville to a point near Gananoque, then it continues to show all of the chief points of interest around Alexandria Bay, N.Y.

Transfer is provided from dock to station.

Lv. **Brockville** . . . . . 5.55 PM Canadian National Railways.  
Ar. **Toronto** . . . . . 9.45 PM Canadian National Railways (Union Station).

Dinner is provided in dining car, also a room with bath for two nights at a first class hotel.

2ND DAY — A two-hour tour of the city is provided. Points of interest visited include: main business section, Rosedale residential district, provincial Parliament Buildings, Queen's Park, University of Toronto, Casa Loma, zoological gardens, Canadian National Exhibition grounds, valley of the Humber River, harbor and docks.

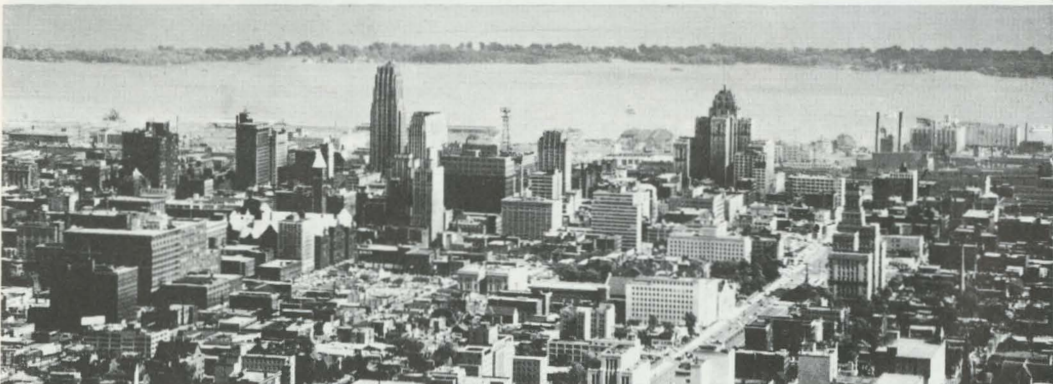
3RD DAY — Lv. **Toronto** . . . . . 4.15 PM Canadian National Railways (Union Station).  
Ar. **Ottawa** . . . . . 10.15 PM Canadian National Railways (Union Station).

Dinner is provided on train, also a room with bath for one night at the Chateau Laurier.

4TH DAY — A two-hour tour of the city and district is provided. Points of interest visited include: main business section, Parliament Buildings, embassies of several countries, government buildings, Rideau Hall — residence of Canada's Governor General — Rockcliffe Park, historical sites and monuments.

Lv. **Ottawa** . . . . . 4.45 PM Canadian National Railways (Union Station).  
Ar. **Montreal** . . . . . 7.15 PM Canadian National Railways (Central Station).

Dinner is provided in dining car.



View of downtown Toronto with Lake Ontario in background.

## Maple Leaf Tour No. M-5

### 4-DAY TOUR—MONTREAL TO TORONTO AND NIAGARA FALLS, ONT.

Single \$80.00

2 in one room \$71.00 each

3 in one room \$66.00 each

1ST DAY — Lv. **Montreal** . . . . . 3.30 PM Canadian National Railways (Windsor Station).  
Ar. **Toronto** . . . . . 9.45 PM Canadian National Railways (Union Station).

Dinner is provided on the train, also a room with bath for one night at a first class hotel.

2ND DAY — A two-hour tour of the city is provided. Points of interest visited include: the main business section, Rosedale residential district, provincial Parliament Buildings, Queen's Park, University of Toronto, Casa Loma, zoological gardens, Canadian National Exhibition grounds, valley of the Humber River, harbor and docks.

Lv. **Toronto** . . . . . 7.30 PM Canadian National Railways (Union Station).

Ar. **Niagara Falls** . . . 9.40 PM Canadian National Railways.

A room with bath is provided for two nights at the Sheraton-Brock Hotel.

3RD DAY — A four-hour deluxe tour of Niagara Falls and district is provided. Crossing the famous Rainbow Bridge, you are afforded an unsurpassed view of both the American and Canadian Falls. You proceed through Queen Victoria Park to Table Rock — site of the scenic Tunnel Station — Whirlpool Rapids, Spanish Aero Car, Niagara Parks School of Gardening, vast electric power stations, Queenston Heights, Whirlpool State Park and the city of Niagara Falls, N.Y., and then to the starting point, Rainbow Bridge Terminal (opposite Sheraton-Brock Hotel).

4TH DAY — Lv. **Niagara Falls** . . .12.45 PM Canadian National Railways.

Ar. **Toronto** . . . . . 3.25 PM Canadian National Railways (Union Station).

Lv. **Toronto** . . . . . 4.15 PM Canadian National Railways (Union Station).

Ar. **Montreal** . . . . .10.30 PM Canadian National Railways (Windsor Station).

Dinner is provided in dining car.



One of the world's great natural wonders—Niagara Falls.



**5-DAY TOUR—MONTREAL TO GASPÉ PENINSULA**

Daily during July and August

(Every Monday during June and September)

Single \$144.00

2 in one room \$139.00 each

1ST DAY — Lv. **Montreal** . . . . . 8.30 PM Canadian National Railways (Central Station).

2ND DAY — Ar. **Mont Joli** . . . . . 5.50 AM Canadian National Railways.

Lower berth is provided.

Gaspé Tours Line representative meets you on arrival at 5.50 AM. Breakfast is provided at the Commercial Hotel, after which tour of the **Gaspé Peninsula** begins. The modern automobile proceeds along the shore of the St. Lawrence River most of the first day, passing the city of Matane and several quaint French villages. Luncheon is provided en route, also dinner and lodging at Rivière Madeleine.

3RD DAY — After breakfast, trip is resumed. The route skirts the gulf, passing Rivière-aux-Renards (Fox River), a fishing village, and passes through the lovely Shickshocks Mountains. Luncheon at Gaspé village, a beautiful natural harbor at the tip of the Gaspé Peninsula. Then, on to Percé for a day's stay at the Pic de l'Aurore (Peak O'Dawn) Hotel, where room and meals are provided.

4TH DAY — In the morning, a boat trip is provided to Percé Rock and Bonaventure Island — the bird sanctuary. In the afternoon, the trip is resumed, skirting the Gulf of St. Lawrence and the Baie des Chaleurs. Room and meals are provided at Carleton, a popular summer resort.

5TH DAY — You conclude the Gaspé tour with the ride from Carleton to Mont Joli through the beautiful Matapedia Valley, arriving at the Commercial Hotel in time for dinner.

Lv. **Mont Joli** . . . . . 10.35 PM Canadian National Railways ("The Scotian").

6TH DAY — Ar. **Montreal** . . . . . 7.30 AM Canadian National Railways (Central Station).

Lower berth is provided.

**NOTE:** Only one piece of hand baggage per person will be allowed on the Gaspé motor tour.



The Village of Percé, Gaspé Peninsula.

8-DAY TOUR—MONTREAL TO NEW YORK AND WASHINGTON

Single \$129.00

2 in one room \$124.00 each

3 in one room \$111.00 each

1ST DAY — Lv. Montreal . . . . . 8.20 AM Canadian National Railways (Central Station).  
Ar. New York . . . . . 9.15 PM New Haven RR (Grand Central Station).

A room with bath is provided for four nights at a first class hotel, also the following sightseeing tours:

2ND TO — **BUS TOUR**—A two-hour 30-minute tour of lower New York and Chinatown, including Times  
5TH DAY Square, Greenwich Village, the Bowery, lower East Side and Civic Center, Wall Street sector, United Nations headquarters, Rockefeller Center, etc.

**BOAT CRUISE**—A three-hour boat cruise via DAY LINE SIGHTSEEING around Manhattan Island. A thrilling cruise featuring a view of Manhattan's famous skyline.

**EMPIRE STATE OBSERVATORY**—A visit to the top of the 102-storey Empire State Building, where a panoramic view of the city and surrounding territory can be seen.

**NBC GUIDED TOUR**—A one-hour escorted tour of Radio City NBC Studio-Television facilities leaves from the NBC Guided Tour Lounge, mezzanine floor, RCA Building, 30 Rockefeller Plaza, every 20 minutes.

5TH TO — Lv. New York . . . . . 12.35 PM Pennsylvania RR (Pennsylvania Station).  
7TH DAY Ar. Washington . . . . . 4.20 PM Pennsylvania RR (Union Station).

A room with bath is provided for three nights at a first class hotel, also the following sightseeing tours:

A four-hour personally conducted tour of the interior of the following government buildings: Federal Bureau of Investigation (FBI), the White House, Bureau of Engraving and Printing, US Capitol and Smithsonian Institute.

A three-hour 30-minute tour of the city and Arlington National Cemetery. Points of interest visited include: downtown business and government buildings area, Capitol Hill, Iwo Jima Memorial, Arlington National Cemetery, the Tomb of the Unknown Soldier, the Memorial Amphitheatre, with a visit to Lincoln and Jefferson memorials.

A four-hour tour of Mt. Vernon, Woodlawn and Alexandria. This tour takes you across the Potomac river to the colonial city of Alexandria — America's oldest incorporated town and the home of Washington and the Woodlawn Plantation. Ample time is provided for a visit to the famous mansion, out-buildings, grounds and the tomb of George and Martha Washington at Mount Vernon. The return trip takes you by the Martha Washington Memorial, the National Airport, the Pentagon Building, Jefferson Memorial and the Tidal Basin.

8TH DAY — Lv. Washington . . . . . 3.00 PM Pennsylvania RR (Union Station).

9TH DAY — Ar. Montreal . . . . . 7.35 AM Canadian National Railways (Central Station).

9-DAY TOUR—MONTREAL TO TORONTO, CHICAGO AND DETROIT

Single \$176.00

2 in one room \$167.00 each

3 in one room \$156.00 each

1ST DAY — Lv. **Montreal** . . . . . 3.30 PM Canadian National Railways (Windsor Station).  
Ar. **Toronto** . . . . . 9.45 PM Canadian National Railways (Union Station).

Dinner is provided on the train, also a room with bath for two nights at a first class hotel.

2ND DAY — A two-hour tour of the city is provided. Points of interest visited include: main business section, Rosedale residential district, provincial Parliament Buildings, Queen's Park, University of Toronto, Casa Loma, zoological gardens, Canadian National Exhibition grounds, valley of the Humber River, harbor and docks.

3RD DAY — Lv. **Toronto** . . . . . 8.30 AM Canadian National Railways (Union Station).  
Ar. **Chicago** . . . . . 8.20 PM Canadian National Railways (Dearborn Station).

Breakfast, luncheon and dinner are provided in dining car, also a room with bath for three nights at a first class hotel.

4TH DAY — A four-hour tour of north and south Chicago is provided. Points of interest visited include: the business, shopping and residential sections, Chicago University campus, four of the city's largest parks — Lincoln, Jackson, Washington and Grant — Lakeshore Drive, with stops at the Elks National War Memorial, Museum of Science and Industry, and Lorado Taft's "Fountain of Time".

5TH DAY — A two-hour 30-minute tour of Chinatown and Chicago by night is provided. This tour leaves your hotel at 8.30 PM (DST) and features Hull House, Mexican, Russian, Japanese, and Ghetto sections and also includes trip through the famous Maxwell Street district, Hoboland and the Bohemian Art Colony.

6TH DAY — Lv. **Chicago** . . . . . 10.00 AM Canadian National Railways (Dearborn Station).  
Ar. **Detroit** . . . . . 6.00 PM Canadian National Railways (Brush Street Station).

Luncheon is provided in dining car, also a room with bath for three nights at a first class hotel.

7TH DAY — A four-hour 30-minute drive is provided, which takes you through the shopping and industrial sections of Detroit's West Side and includes a visit to Greenfield Village. Here, an early American village has been assembled and rebuilt on the property of Henry Ford to preserve the institutions and the mode of living of colonial days. You will see pioneer styles of schools, foundries, mills, churches, and early samples of handicrafts, crockery and wearing apparel.

8TH DAY — A three-hour sightseeing tour of Detroit is provided. Tour takes you through the downtown section of Detroit over the beautiful Ambassador Bridge to Windsor. Also visit beautiful Belle Isle, Detroit's 1000-acre Island Park.

9TH DAY — Lv. **Detroit** . . . . . 8.50 AM Statler Hotel — 9.00 AM Brush St. Station. (CNR bus).  
Ar. **Windsor** . . . . . 9.30 AM Canadian National Railways (CNR Station).

Lv. **Windsor** . . . . . 9.40 AM Canadian National Railways (CNR Station).  
Ar. **Toronto** . . . . . 3.25 PM Canadian National Railways (Union Station).

Lv. **Toronto** . . . . . 4.15 PM Canadian National Railways (Union Station).  
Ar. **Montreal** . . . . . 10.30 PM Canadian National Railways (Windsor Station).

Luncheon and dinner are provided in dining car.

**8-DAY TOUR—MONTREAL TO NEW BRUNSWICK, NOVA SCOTIA,  
LAND OF EVANGELINE AND PRINCE EDWARD ISLAND**

Leave Montreal every Sunday, July 3rd to August 21st inclusive.

Single \$277.00

2 in one room \$256.00 each

---

1ST DAY — Lv. **Montreal** . . . . . 8.30 PM Canadian National Railways (Central Station).  
SUNDAY

2ND DAY — Ar. **Moncton** . . . . . 12.55 PM Canadian National Railways.  
MONDAY  
Lower berth is provided, also breakfast and luncheon in dining car.

Leave Moncton about 1.30 PM from the Brunswick Hotel, opposite the CNR Station, on a personally conducted special automobile tour. A visit is made to Magnetic Hill and Fort Beauséjour. A room with bath, and meals, are provided at the Fort Cumberland Hotel, Amherst, N.S.

3RD DAY — Leave at 8.00 AM via Sunrise Trail for a delightful day in **The Land of Evangeline**. Luncheon is provided at Sherwood Inn, Windsor. Visit is made to Victoria Park, Truro; Haliburton Museum, Windsor; Evangeline Park, Grand Pré; and Palmetter's Gift Shop, Kentville. A room with bath, and meals, are provided at the Cornwallis Inn, Kentville, N.S.

4TH DAY — Leave Kentville at 8.00 AM. Stopover is made at Cape Blomidon Lookout for a marvelous view of the surrounding valleys. En route to Halifax a stopover is made for luncheon at Bryan's Villa, renowned lobster and steak house. A visit is also made to Peggy's Cove, famous for its scenery. A room with bath, and meals, are provided at the Canadian National Railways Nova Scotian Hotel, Halifax, N.S.

5TH DAY All day in Halifax for shopping and sightseeing. A room with bath, and meals, are provided at  
THURSDAY The Nova Scotian Hotel.

6TH DAY — Leave at 8.00 AM for a two-day visit to **Prince Edward Island**, "The Garden of the Gulf".  
FRIDAY En route a visit is made to the Fish Hatchery at Grand Lake, and Wild Life Park at Shubenacadie, N.S. Luncheon is provided at the Palliser Restaurant, Truro. After the 14-mile crossing of the Northumberland Strait by ferry, you motor through charming countryside to Charlottetown. A room with bath (two nights), and meals, are provided at the Canadian National Railways Charlottetown Hotel.

7TH DAY — The morning is free to visit the Legislative Buildings, shopping district, etc. After luncheon at  
SATURDAY your hotel, leave for a visit to Anne of Green Gables Memorial. Weather permitting, a further visit is made to Cavendish Beach.

8TH DAY — Leave in late AM for the mainland and on to Moncton by an entirely different route through  
SUNDAY scenic country.

Lv. **Moncton** . . . . . 4.25 PM Canadian National Railways "Ocean Limited".

Lower berth and dinner are provided.

9TH DAY — Ar. **Montreal** . . . . . 7.50 AM Canadian National Railways (Central Station).  
MONDAY  
Lower berth is provided, also dinner in dining car.

**NOTE:** Only one piece of hand baggage per person will be allowed on the Maritimes tour. All gratuities are included on the conducted motor tour.

## Maple Leaf Tour No. M-20

---

### 12-DAY TOUR—MONTREAL TO GASPÉ PENINSULA, NEW BRUNSWICK, NOVA SCOTIA, LAND OF EVANGELINE AND PRINCE EDWARD ISLAND

Leave Montreal every Wednesday, June 29th to August 17th inclusive.

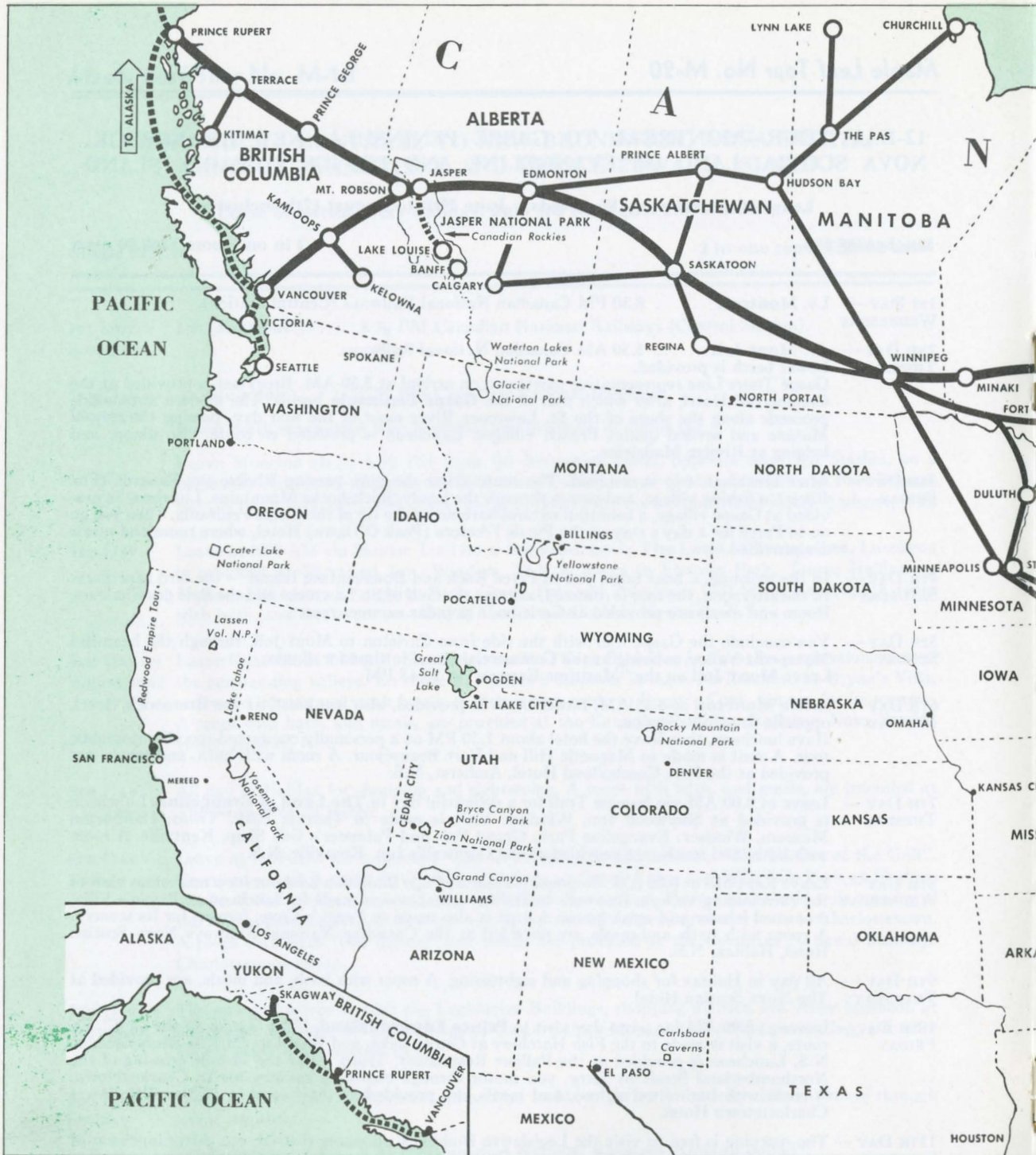
Single \$385.00

2 in one room \$360.00 each

---

- 1ST DAY — Lv. **Montreal** . . . . . 8.30 PM Canadian National Railways (Central Station).  
WEDNESDAY
- 2ND DAY — Ar. **Mont Joli** . . . . . 5.50 AM Canadian National Railways.  
THURSDAY Lower berth is provided.  
Gaspé Tours Line representative meets you on arrival at 5.50 AM. Breakfast is provided at the Commercial Hotel, after which tour of the **Gaspé Peninsula** begins. The modern automobile proceeds along the shore of the St. Lawrence River most of the first day, passing the city of Matane and several quaint French villages. Luncheon is provided en route, also dinner and lodging at Rivière Madeleine.
- 3RD DAY — After breakfast, trip is resumed. The route skirts the gulf, passing Rivière-aux-Renards (Fox River), a fishing village, and passes through the lovely Shickshocks Mountains. Luncheon is provided at Gaspé village, a beautiful natural harbour at the tip of the Gaspé Peninsula. Then you go on to Percé for a day's stay at the Pic de l'Aurore (Peak O'Dawn) Hotel, where room and meals are provided.  
FRIDAY
- 4TH DAY — In the morning, a boat takes you to Percé Rock and Bonaventure Island — the bird sanctuary.  
SATURDAY In the afternoon, the tour is resumed, skirting the Gulf of St. Lawrence and the Baie des Chaleurs. Room and meals are provided at Carleton, a popular summer resort.
- 5TH DAY — You conclude the Gaspé tour with the ride from Carleton to Mont Joli, through the beautiful Matapedia Valley, arriving at the Commercial Hotel in time for dinner.  
SUNDAY Leave **Mont Joli** on the "Maritime Express" at 10.45 PM.
- 6TH DAY — Arrive **Moncton** at 6.45 AM. Lower berth is provided, also breakfast, at the Brunswick Hotel, opposite the CNR Station.  
MONDAY Have luncheon, then leave the hotel about 1.30 PM on a personally conducted special automobile tour. A visit is made to Magnetic Hill and Fort Beauséjour. A room with bath, and meals, are provided at the Fort Cumberland Hotel, Amherst, N.S.
- 7TH DAY — Leave at 8.00 AM via Sunrise Trail for a delightful day in **The Land of Evangeline**. Luncheon is provided at Sherwood Inn, Windsor. Visit is made to Victoria Park, Truro; Haliburton Museum, Windsor; Evangeline Park, Grand Pré; and Palmeter's Gift Shop, Kentville. A room with bath, and meals, are provided at the Cornwallis Inn, Kentville, N.S.  
TUESDAY
- 8TH DAY — Leave Kentville at 8.00 AM. Stopover is made at Cape Blomidon Lookout for a marvelous view of the surrounding valleys. En route to Halifax a stopover is made for luncheon at Bryan's Villa, renowned lobster and steak house. A visit is also made to Peggy's Cove, famous for its scenery. A room with bath, and meals, are provided at the Canadian National Railways Nova Scotian Hotel, Halifax, N.S.  
WEDNESDAY
- 9TH DAY — All day in Halifax for shopping and sightseeing. A room with bath, and meals, are provided at  
THURSDAY The Nova Scotian Hotel.
- 10TH DAY — Leave at 8.00 AM for a two-day visit to **Prince Edward Island**, "The Garden of the Gulf". En route, a visit is made to the Fish Hatchery at Grand Lake, and Wild Life Park at Shubenacadie, N.S. Luncheon is provided at the Palliser Restaurant, Truro. After the 14-mile crossing of the Northumberland Strait by ferry, you motor through charming countryside to Charlottetown. A room with bath (two nights), and meals, are provided at the Canadian National Railways Charlottetown Hotel.  
FRIDAY
- 11TH DAY — The morning is free to visit the Legislative Buildings, shopping district, etc. After luncheon at your hotel, leave for a visit to Anne of Green Gables Memorial. Weather permitting, a further visit is made to Cavendish Beach.  
SATURDAY
- 12TH DAY — Leave in late AM for the mainland and on to Moncton by an entirely different route through scenic country.  
SUNDAY Lv. **Moncton** . . . . . 4.25 PM Canadian National Railways "Ocean Limited".  
Lower berth and dinner are provided.
- 13TH DAY — Ar. **Montreal** . . . . . 7.50 AM Canadian National Railways (Central Station).  
MONDAY

**NOTE:** Only one piece of hand baggage per person will be allowed on the Gaspé and Atlantic Provinces motor tours. Gratuities are included on the Atlantic Provinces motor tour only.



WHEREVER YOU GO IN CANADA, YOU'LL ENJOY THE WIDEST RANGE OF TRAIN TRAVEL ACCOMM



...ODATIONS, THE UTMOST IN GRACIOUS TRAVEL-LIVING, WHEN YOU GO BY CANADIAN NATIONAL.

8-DAY TOUR—MONTREAL TO NOVA SCOTIA, HALIFAX AND CABOT TRAIL

Leave Montreal every Sunday, July 3rd to August 21st inclusive.

Single \$280.00

2 in one room \$262.00 each

- 1ST DAY — Lv. **Montreal** . . . . . 8.30 PM Canadian National Railways (Central Station).  
SUNDAY
- 2ND DAY — Ar. **Halifax** . . . . . 5.45 PM Canadian National Railways (CNR Station).  
MONDAY Lower berth is provided, also breakfast, luncheon and dinner in dining car.  
A room with bath for two nights and all meals are provided at the Canadian National Railways Nova Scotian Hotel.
- 3RD DAY — In the afternoon, a two-hour sightseeing tour of Halifax is provided. Points of interest visited  
TUESDAY include: Citadel Hill, the Public Gardens, government buildings, Dalhousie University and the main business and residential areas.
- 4TH DAY — Leave from your hotel at 8.00 AM for a personally conducted automobile tour around Cape  
WEDNESDAY Breton Island's Cabot Trail via the scenic eastern shore, the Canso Causeway and the Bras d'Or Lakes region. A stop is made en route at the Fish Hatchery, St. Peter's. Luncheon is provided at Antigonish. A room with bath, and meals, are provided at Isle Royale Hotel, Sydney, N.S.
- 5TH DAY — Leave at 8.30 AM for the impressive ride above the rugged shoreline of Cape Breton Island,  
THURSDAY famed for its natural scenery. A visit is made en route to the Alexander Graham Bell Museum, also to the Gaelic School and Gift Shop and McAskill Museum, St. Anns. Luncheon is provided at Inverary Inn, Baddeck. The ride over Cape Smokey, towering 1,200 feet above the sea, to the Ingonish area is considered one of the most outstanding, from a scenic standpoint, of any region in eastern America. A room with bath (two nights), and meals, are provided at Keltic Lodge, Ingonish Beach, a splendid resort overlooking the ocean.
- 6TH DAY — Day free to enjoy this ideally-situated resort hotel. Facilities for bathing, golfing, bowling-on-the-  
FRIDAY green and trout fishing are available.
- 7TH DAY — Leave at 8.30 AM on one of the most picturesque and thrilling journeys over the **Cabot Trail**  
SATURDAY circuit, presenting a magnificent panorama of hills, rocky gorges and rushing torrents. Then descend into the peaceful Margaree Valley, long famous for salmon waters and great natural beauty. Luncheon is provided en route at the Royal George Hotel, Antigonish. A room with bath, and meals, are provided at the Norfolk Hotel, New Glasgow.
- 8TH DAY — Breakfast and luncheon are provided at the Norfolk Hotel.  
SUNDAY Leave at noon for Truro.  
Lv. **Truro** . . . . . 1.15 PM Canadian National Railways.
- 9TH DAY — Ar. **Montreal** . . . . . 7.50 AM Canadian National Railways (Central Station).  
MONDAY Lower berth is provided, also dinner in dining car.

**NOTE:** Only one piece of hand baggage per person will be allowed on the motor tour of Cape Breton. Gratuities are included on this conducted tour.



The Cabot Trail, Cape Breton Island.



**12-DAY TOUR—MONTREAL TO GASPÉ PENINSULA, NOVA SCOTIA AND CABOT TRAIL**

Leave Montreal every Wednesday, June 29th to August 17th inclusive.

Single \$387.00

2 in one room \$365.00 each

- 1ST DAY — Lv. **Montreal** . . . . . 8.30 PM Canadian National Railways (Central Station).  
WEDNESDAY
- 2ND DAY — Ar. **Mont Joli** . . . . . 5.50 AM Canadian National Railways.  
THURSDAY Lower berth is provided.  
Gaspé Tours Line representative meets you on arrival at 5.50 AM. Breakfast is provided at the Commercial Hotel, after which tour of the **Gaspé Peninsula** begins. The modern automobile proceeds along the shore of the St. Lawrence River most of the first day, passing the city of Matane and several quaint French villages. Luncheon is provided en route, also dinner and lodging at Rivière Madeleine.
- 3RD DAY — After breakfast, trip is resumed. The route skirts the gulf, passing Rivière-aux-Renards (Fox  
FRIDAY River), a fishing village, and passes through the lovely Shickshocks Mountains. Luncheon is provided at Gaspé village, a beautiful natural harbor at the tip of the Gaspé Peninsula. Then you go on to Percé for a day's stay at the Pic de l'Aurore (Peak O'Dawn) Hotel, where room and meals are provided.
- 4TH DAY — In the morning, a boat takes you to Percé Rock and Bonaventure Island — the bird sanctuary.  
SATURDAY In the afternoon, the tour is resumed, skirting the Gulf of St. Lawrence and the Baie des Chaleurs. A room and meals are provided at Carleton, a popular summer resort.
- 5TH DAY — You conclude the Gaspé tour with the ride from Carleton to Mont Joli, through the beautiful  
SUNDAY Matapedia Valley, arriving at the Commercial Hotel in time for dinner.  
Lv. **Mont Joli** . . . . . 10.45 PM Canadian National Railways.
- 6TH DAY — Ar. **Halifax** . . . . . 1.20 PM Canadian National Railways.  
MONDAY Lower berth is provided, also breakfast and luncheon in dining car. A room, with bath and meals, are provided for two nights at the Canadian National Railways Nova Scotian Hotel.
- 7TH DAY — In the afternoon, a two-hour sightseeing tour of Halifax is provided. Points of interest visited  
TUESDAY include: Citadel Hill, Dalhousie University, the Public Gardens, government buildings, business and residential districts.
- 8TH DAY — Leave from your hotel at 8.00 AM for a personally conducted automobile tour around Cape  
WEDNESDAY Breton Island's Cabot Trail via the scenic eastern shore, the Canso Causeway and the Bras d'Or Lakes region. A stop is made en route at the Fish Hatchery, St. Peter's. Luncheon is provided at Antigonish. A room with bath, and meals, are provided at Isle Royale Hotel, Sydney, N.S.
- 9TH DAY — Leave at 8.30 AM for the impressive ride above the rugged shoreline of Cape Breton Island,  
THURSDAY famed for its natural scenery. A visit is made en route to the Alexander Graham Bell Museum, also to the Gaelic School and Gift Shop and McAskill Museum, St. Anns. Luncheon is provided at Inverary Inn, Baddeck. The ride over Cape Smokey, towering 1,200 feet above the sea, to the Ingonish area is considered one of the most outstanding, from a scenic standpoint, of any region in eastern America. A room with bath (two nights), and meals are provided at Keltic Lodge, Ingonish Beach, a splendid resort overlooking the ocean.
- 10TH DAY — Day free to enjoy this ideally-situated resort hotel. Facilities for bathing, golfing, bowling-on-the-  
FRIDAY green and trout fishing are available.
- 11TH DAY — Leave at 8.30 AM on one of the most picturesque and thrilling journeys over the **Cabot Trail**  
SATURDAY circuit, presenting a magnificent panorama of hills, rocky gorges and rushing torrents. Then descend into the peaceful Margaree Valley, long famous for salmon waters and great natural beauty. Luncheon is provided en route at the Royal George Hotel, Antigonish. A room with bath, and meals, are provided at the Norfolk Hotel, New Glasgow.
- 12TH DAY — Breakfast and luncheon are provided at the Norfolk Hotel. Leave at noon for Truro.  
SUNDAY Lv. **Truro** . . . . . 1.15 PM Canadian National Railways "Ocean Limited".
- 13TH DAY — Ar. **Montreal** . . . . . 7.50 AM Canadian National Railways (Central Station).  
MONDAY Lower berth is provided, also dinner in dining car.

**NOTE:** Only one piece of hand baggage per person will be allowed on the Gaspé and Cape Breton motor tours. Gratuities are included on the Cape Breton tour only.

15-DAY TOUR—MONTREAL TO VICTORIA, B.C.

	FIRST CLASS	TOURIST CLASS	COACHES ONLY
Single:	\$382.00	\$349.00	\$277.00
Double:	\$355.00 each	\$322.00 each	\$250.00 each

- 1ST DAY — Lv. **Montreal** . . . . . 3.15 PM Canadian National Railways "Super Continental" (Central Station).
- 4TH DAY — Ar. **Vancouver** . . . . . 10.00 AM Canadian National Railways (CNR Station).  
A lower berth is provided on the train, also room with bath for three nights at the Hotel Vancouver.
- 5TH AND — A three-hour 15-minute grand city tour is provided. Points of interest visited include: the downtown area, Stanley Park — 1,000 acres of primeval forest, Lost Lagoon, mountain-guarded natural harbor, Lion's Gate Bridge — the longest suspension bridge in the British Commonwealth, the business and Oriental districts of the city, shoreline, homes and gardens, miles of ocean beach drive skirting English Bay and the Gulf of Georgia, etc.
- 6TH DAYS — A three-hour sightseeing tour of Capilano Canyon, harbor and British Properties is provided. Tour moves along via the North Vancouver ferry and into the mountains on the scenic north shore of Burrard Inlet. Enjoy the rugged grandeur of Capilano Canyon — sheer, rocky cliffs rising above the swirling rushing waters of the Capilano River; snow-clad Lion's peaks and the surrounding Coast Range; British Properties — a magnificent \$10,000,000 development — picturesque homesite setting, unrivalled panorama of mountain, forest, sea and sky. Return across the Lion's Gate Bridge.
- 7TH DAY — Lv. **Vancouver** . . . . . 10.00 AM Canadian Pacific Steamships (CPR Dock).  
Ar. **Victoria** . . . . . 2.15 PM Canadian Pacific Steamships (CPR Dock).  
A room with bath is provided for three nights at the Empress Hotel.
- 8TH DAY — A combination circle drive is provided. This tour includes the most outstanding features of Victoria and southern Vancouver island. Highlights are Victoria's business section, Beacon Hill Park, Marine Drive, Oak Bay and Uplands residential districts, famous Malahat Mountain Tour, Butchart Gardens, etc. This tour is taken in two sections, one of one-hour 30-minute duration and the other of four-hour duration.
- 9TH DAY — Free.
- 10TH DAY — Lv. **Victoria** . . . . . 1.10 PM Canadian Pacific Steamships (CPR Dock).  
Ar. **Vancouver** . . . . . 5.25 PM Canadian Pacific Steamships (CPR Dock).  
A room with bath is provided for two nights at the Hotel Vancouver.
- 12TH DAY — Lv. **Vancouver** . . . . . 3.40 PM Canadian National Railways (CNR Station).  
A lower berth is provided.
- 15TH DAY — Ar. **Montreal** . . . . . 4.45 PM Canadian National Railways (Central Station).



The peaceful Inner Harbor, Victoria.

## Maple Leaf Tour No. M-27

### 15-DAY TOUR—MONTREAL TO SEATTLE, WASHINGTON

	FIRST CLASS	TOURIST CLASS	COACHES ONLY
Single:	\$391.00	\$357.00	\$285.00
Double:	\$364.00 each	\$330.00 each	\$257.00 each

1ST DAY — Lv. **Montreal** . . . . . 3.15 PM Canadian National Railways "Super Continental" (Central Station).

4TH DAY — Ar. **Vancouver** . . . . . 10.00 AM Canadian National Railways (CNR Station).  
A lower berth is provided on the train, also a room with bath for three nights at the Hotel Vancouver.

5TH AND — A three-hour 15-minute grand city tour is provided. Points of interest visited include: the down-  
6TH DAY town area, Stanley Park — 1,000 acres of primeval forest, Lost Lagoon, mountain-guarded natural harbor, Lion's Gate Bridge — the longest suspension bridge in the British Commonwealth, the business and Oriental districts of the city, shoreline, homes and gardens, miles of ocean beach drive skirting English Bay and the Gulf of Georgia, etc.

A three-hour sightseeing tour of Capilano Canyon, harbor and British Properites is provided. Tour moves along via the North Vancouver ferry and into the mountains on the scenic north shore of Burrard Inlet. Enjoy the rugged grandeur of Capilano Canyon — sheer, rocky cliffs rising above the swirling rushing waters of the Capilano River; snow-clad Lion's peaks and the surrounding Coast Range; British Properties — a magnificent \$10,000,000 development — picturesque homesite setting, unrivalled panorama of mountain, forest, sea and sky. Return across the Lion's Gate Bridge.

7TH DAY — Lv. **Vancouver** . . . . . 10.00 AM Canadian Pacific Steamships (CPR Dock).  
Ar. **Victoria** . . . . . 2.15 PM Canadian Pacific Steamships (CPR Dock).  
A room with bath is provided for two nights at the Empress Hotel.

8TH DAY — A combination circle drive is provided. This tour includes the most outstanding features of Victoria and southern Vancouver island. Highlights are Victoria's business section, Beacon Hill Park, Marine Drive, Oak Bay and Uplands residential districts, famous Malahat Mountain Tour, Butchart Gardens, etc. This tour is taken in two sections, one of one-hour 30-minute duration and the other of four-hour duration.

9TH DAY — Lv. **Victoria** . . . . . 5.00 PM Canadian Pacific Steamships (CPR Dock).  
Ar. **Seattle** . . . . . 9.00 PM Canadian Pacific Steamships (CPR Dock).  
A room with bath is provided for three nights at the Olympic Hotel.

10TH DAY — A four-hour 30-minute combination land and water tour is provided. This tour covers 26 miles on water and 24 miles on land. The Gray Line steamer will take you across Salmon Bay, Lake Washington, viewing the floating bridge, Elliott Bay, Lake Union, Portage Bay. By land, you will take a carefully planned tour over Queen Anne Boulevard, passing Green Lake, statue of Chief Seattle, Arboretum, University of Washington campus and many other points of interest.

11TH DAY — Free.

12TH DAY — Lv. **Seattle** . . . . . 8.05 AM Great Northern Railway.  
Ar. **Vancouver** . . . . . 11.55 AM Great Northern Railway.  
Parlor car seat is provided.

Lv. **Vancouver** . . . . . 3.40 PM Canadian National Railways (CNR Station).  
Lower berth is provided.

15TH DAY — Ar. **Montreal** . . . . . 4.45 PM Canadian National Railways (Central Station).

14-DAY TOUR—MONTREAL TO CALIFORNIA

FIRST CLASS		COACHES ONLY	
Single \$466.00	Double \$436.00 each	Single \$264.00	Double \$252.00 each

- 1ST DAY — Lv. **Montreal** . . . . . 3.30 PM Canadian National Railways (Windsor Station).  
 Ar. **Toronto** . . . . . 9.45 PM Canadian National Railways (Union Station).  
 Parlor car seat is provided.  
 Lv. **Toronto** . . . . . 10.00 PM Canadian National Railways (Union Station).
- 2ND DAY — Ar. **Chicago** . . . . . 7.25 AM Canadian National Railways (Dearborn Station).  
 Lower berth is provided.  
 Leave same morning for Los Angeles, California. Roomette is provided.
- 3RD DAY — Arrive **Los Angeles**. A room with bath is provided for five nights at a first class hotel.
- 4TH DAY — A three-hour tour of movie studios is provided. Travel via Echo Park, Angelus Temple, Riverside Drive, San Fernando Valley, Walt Disney, Republic and Universal-International studios, then return via the famed Hollywood Bowl.
- 5TH DAY — A three-hour special night tour is provided. Points of interest visited include: Olvera Street, Mexican shops, Chinatown, Mulholland colored light fountain, Griffith Observatory for a view of the city lights, Hollywood and Wilshire Blvds.
- 6TH DAY — An all-day tour to Disneyland and Knott's Berry Farm is provided. Five full hours in the magic kingdom of Disneyland (90¢ admission not included), then to Knott's Berry Farm with Ghost Town — an exceptional opportunity to see an amazing replica of a true gold rush town of early California.
- 7TH DAY — Free.
- 8TH DAY — Leave **Los Angeles** in the morning for the train trip to **San Francisco**. Parlor car seat is provided. Arrive early evening. A room with bath is provided for three nights at a first class hotel.
- 9TH DAY — A three-hour deluxe tour of San Francisco is provided. Points of interest visited include: the Civic Center, Mission Dolores, Twin Peaks, St. Francis Wood residential section, Steinhart Aquarium, Golden Gate Park, Ocean Beach, Seal Rocks and the Cliff House, Palace of the Legion of Honor, Lincoln Park Sea Cliff, Presidio, Palace of Fine Arts, the Marina, Yacht Harbor and Fort Mason.  
 A two-hour 30-minute tour of Chinatown after dark is provided, which will take you to the largest Chinese settlement outside the Orient. After leaving Chinatown, ride through the financial district, the old Barbary Coast, then to the top of Telegraph Hill for a panoramic view of the city, bridges and bay area. Return via Nob Hill.
- 10TH DAY — A three-hour 30-minute sightseeing tour, via the Golden Gate Bridge to Muir Woods and Marin County, is provided. See giant redwood trees over 1,000 years old, some towering over 300 feet.
- 11TH DAY — Leave **San Francisco** for the return trip to Montreal. Roomette is provided to Chicago.
- 13TH DAY — Arrive **Chicago** and transfer to Dearborn Station.  
 Lv. **Chicago** . . . . . 8.10 PM Canadian National Railways (Dearborn Station).
- 14TH DAY — Ar. **Toronto** . . . . . 8.55 AM Canadian National Railways (Union Station).  
 Lower berth is provided.  
 Lv. **Toronto** . . . . . 9.35 AM Canadian National Railways (Union Station).  
 Ar. **Montreal** . . . . . 5.45 PM Canadian National Railways (Central Station).  
 Parlor car seat is provided.

21-DAY CIRCLE TOUR—MONTREAL TO CALIFORNIA

FIRST CLASS		COACHES ONLY	
Single \$571.00	Double \$526.00 each	Single \$372.00	Double \$343.00 each

- 1ST DAY — Lv. **Montreal**..... 3.15 PM Canadian National Railways "Super Continental" (Central Station).
- 4TH DAY — Ar. **Vancouver**..... 10.00 AM Canadian National Railways (CNR Station).  
Lower berth is provided on train, also room with bath for two nights at the Hotel Vancouver.
- 5TH DAY — In the morning, a bus leaves from the hotel for the three-hour 15-minute grand city tour, including Stanley Park and the downtown area.  
In the afternoon, a three-hour sightseeing tour of Capilano Canyon, harbor and British Properties is provided.
- 6TH DAY — Lv. **Vancouver**..... 10.00 AM Canadian Pacific Steamships (CPR Dock).  
Ar. **Victoria**..... 2.15 PM Canadian Pacific Steamships (CPR Dock).  
A room with bath is provided for two nights at the Empress Hotel.
- 7TH DAY — A combination circle drive is provided. This five-hour 30-minute tour includes the most outstanding features of Victoria and southern Vancouver island.
- 8TH DAY — Lv. **Victoria**..... 5.00 PM Canadian Pacific Steamships (CPR Dock).  
Ar. **Seattle**..... 9.00 PM Canadian Pacific Steamships (CPR Dock).  
A room with bath is provided for two nights at the Olympic Hotel.
- 9TH DAY — A combination land and water tour is provided. This four-hour 30-minute tour covers 26 miles on water and 24 miles on land.
- 10TH DAY — Lv. **Seattle**..... 12.30 PM Union Pacific Railroad (King Street Station).
- 11TH DAY — Ar. **San Francisco**... 9.10 AM Southern Pacific Railway (Market Street Station).  
Roomette is provided on train, also a room with bath for three nights at a first class hotel.
- 12TH DAY — A complete and comprehensive tour of San Francisco is provided. Points of interest visited include: the Civic Center, Golden Gate Park, Ocean Beach, Palace of Fine Arts, etc.  
A two-hour 30-minute tour of Chinatown after dark is provided, which will take you to the largest Chinese settlement outside the Orient. After leaving Chinatown, ride through the financial district, the old Barbary Coast, then to the top of Telegraph Hill for a panoramic view of the city, bridges and bay area. Return via Nob Hill.
- 13TH DAY — A three-hour 30-minute sightseeing tour via the Golden Gate Bridge to Muir Woods and Marin County is provided. See giant redwood trees over 1,000 years old, some towering over 300 feet.
- 14TH DAY — Lv. **San Francisco**... 7.15 AM Southern Pacific Railway (3rd Street Station).  
Ar. **Los Angeles**..... 5.00 PM Southern Pacific Railway (Union Station).  
Parlor car seat is provided on the train, also a room with bath for four nights at a first class hotel.
- 15TH DAY — A three-hour tour of movie picture studios is provided, going via Riverside Drive and San Fernando Valley, returning via the famed Hollywood Bowl.
- 16TH DAY — A three-hour special night tour is provided, with a 30-minute stop in Chinatown. You drive through the old French and Italian sections, returning along Hollywood Boulevard.
- 17TH DAY — An all-day tour to Disneyland and Knott's Berry Farm is provided: five hours in Disneyland, then to Knott's Berry Farm, an amazing replica of a true gold rush town of early California.
- 18TH DAY — Leave **Los Angeles** for the return trip to Montreal. Roomette is provided to Chicago.
- 20TH DAY — Arrive **Chicago** and transfer to Dearborn Station.  
Lv. **Chicago**..... 8.10 PM Canadian National Railways (Dearborn Station).
- 21ST DAY — Ar. **Toronto**..... 8.55 AM Canadian National Railways (Union Station).  
Lower berth is provided.  
Lv. **Toronto**..... 9.35 AM Canadian National Railways (Union Station).  
Ar. **Montreal**..... 5.45 PM Canadian National Railways (Central Station).  
Parlor car seat is provided.



Jasper Park Lodge—CNR's luxurious summer resort in the Canadian Rockies.

**12-DAY TOUR—MONTREAL TO JASPER PARK LODGE**

**Fabulous resort in the heart of the Canadian Rockies.**

**Daily June 6th to September 13th inclusive.**

	FIRST CLASS	TOURIST CLASS	COACHES ONLY
Single:	\$408.00	\$373.00	\$338.00
Double:	\$392.00 each	\$357.00 each	\$322.00 each

1ST DAY — Lv. **Montreal**..... 3.15 PM Canadian National Railways "Super Continental" (Central Station).

3RD DAY — Ar. **Jasper**..... 6.30 PM Canadian National Railways (CNR Station).  
Lower berth is provided.

Transfer to Jasper Park Lodge is provided, also a room with bath for five nights and all meals commencing and terminating with breakfast plus the following motor drives:

4TH DAY — Leave at 9.15 AM from the lodge for the three-hour, 35-mile general drive including the town of Jasper, Patricia and Pyramid Lakes at the base of Pyramid Mountain, thence across the Athabaska Valley to Maligne Canyon, a tremendous gorge descending to a depth of 188 feet.

5TH DAY — Leave at 9.00 AM from the lodge for a seven-hour tour to the Columbia Icefield, through the very heart of the Canadian Rockies, to the largest and most impressive icefield outside the Arctic.  
Luncheon is provided at Columbia Icefield Chalet. Distance is approximately 150 miles return.

6TH DAY — Leave at 2.30 PM from the lodge for a three-hour tour to Mount Edith Cavell and Angel Glacier — one of the outstanding scenic drives in the park, offering beautiful vistas of mountain grandeur. Distance is approximately 44 miles return.

7TH DAY — Leave Jasper Park Lodge at 3.30 PM for a two-night visit to Maligne Lake, arriving at 6.30 PM.  
Room and meals are provided at Maligne Lake Chalet.

8TH DAY — One full day at beautiful Maligne Lake with a 35-mile scenic motor boat tour. The big game hunter — with the camera — is sure of a full bag of mountain sheep, goats, moose, deer and caribou. Excellent speckled trout fishing is available to the angler within a short distance from the chalet. Maligne Lake itself, the largest glacial lake in the Rockies, a mile above sea level, and surrounded by ice-crowned mountain peaks towering another mile into the sky, is one of the greatest scenic wonders of North America.

9TH DAY — Leave Maligne Lake at 10.30 AM via bus for Medicine Lake — motor boat across the lake — thence by automobile to Jasper Park Lodge, arriving at 12.30 PM.

10TH DAY — Transfer is provided to Jasper Station.

Lv. **Jasper**..... 9.00 AM Canadian National Railways "Super Continental" (CNR Station).  
Lower berth is provided.

12TH DAY — Ar. **Montreal**..... 4.45 PM Canadian National Railways "Super Continental" (CNR Station).

## Maple Leaf Tour No. M-32

### 16-DAY TOUR—MONTREAL TO VANCOUVER, VICTORIA AND JASPER

Daily May 29th to September 4th inclusive.

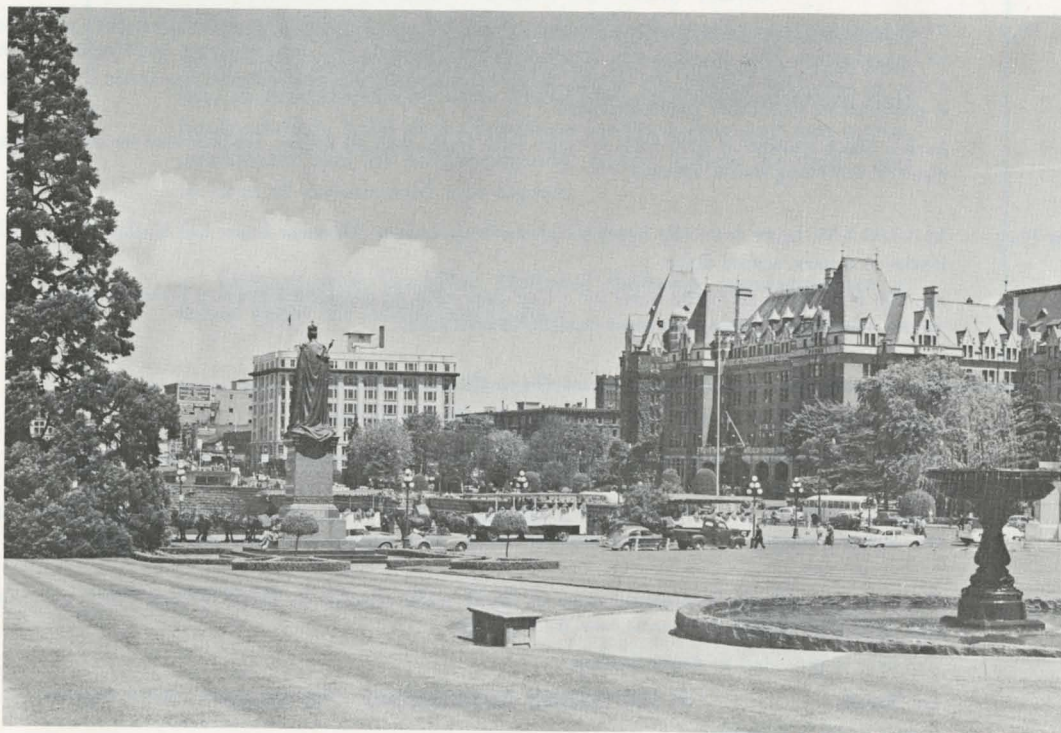
FIRST CLASS	TOURIST CLASS	COACHES ONLY
Single: \$433.00	\$404.00	\$339.00
Double: \$404.00 each	\$375.00 each	\$310.00 each

- 1ST DAY — Lv. **Montreal** . . . . . 3.15 PM Canadian National Railways "Super Continental" (Central Station).
- 4TH DAY — Ar. **Vancouver** . . . . . 10.00 AM Canadian National Railways (CNR Station).  
Lower berth is provided on the train, also a room with bath for three nights at the Hotel Vancouver.
- 5TH DAY — A three-hour 15-minute grand city tour is provided. Points of interest visited include: the downtown area, Stanley Park — 1,000 acres of primeval forest, Lost Lagoon, mountain-guarded natural harbor, Lion's Gate Bridge — the longest suspension bridge in the British Commonwealth, the business and Oriental districts of the city, shoreline, homes and gardens, miles of ocean beach drive skirting English Bay and the Gulf of Georgia, etc.
- 6TH DAY — A two-hour 45-minute sightseeing tour of Capilano Canyon, harbor and British Properties, is provided. Tour moves along via the North Vancouver ferry and into the mountains on the scenic north shore of Burrard Inlet. Enjoy the rugged grandeur of Capilano Canyon — sheer, rocky cliffs rising above the swirling rushing waters of the Capilano River; snow-clad Lion's peaks and the surrounding Coast Range; British Properties — a magnificent \$10,000,000 development — picturesque homesite setting, unrivalled panorama of mountain, forest, sea and sky. Return across the Lion's Gate Bridge.
- 7TH DAY — Lv. **Vancouver** . . . . . 10.00 AM Canadian Pacific Steamships (CPR Dock).  
Ar. **Victoria** . . . . . 2.15 PM Canadian Pacific Steamships (CPR Dock).  
A room with bath is provided for three nights at the Empress Hotel.
- 8TH DAY — A combination circle drive is provided This tour includes the most outstanding features of Victoria and southern Vancouver island. Highlights are Victoria's business section, Beacon Hill Park, Marine Drive, Oak Bay and Uplands residential districts, famous Malahat Mountain Tour, Butchart Gardens, etc. This tour is taken in two sections, one of one-hour 30-minute duration and the other of four-hour duration.
- 9TH DAY — Free.
- 10TH DAY — Lv. **Victoria** . . . . . 1.10 PM Canadian Pacific Steamships (CPR Dock).  
Ar. **Vancouver** . . . . . 5.25 PM Canadian Pacific Steamships (CPR Dock).  
Lv. **Vancouver** . . . . . 7.45 PM Canadian National Railways (CNR Station).  
Lower berth is provided.
- 11TH DAY — Ar. **Jasper** . . . . . 12.30 PM Canadian National Railways (CNR Station).  
Transfer to Jasper Park Lodge is provided, also a room with bath for three nights, all meals commencing with dinner and terminating with breakfast and the following motor drives:
- 12TH DAY — Leave at 9.00 AM from the lodge for a seven-hour tour to the Columbia Icefield, through the very heart of the Canadian Rockies, to the largest and most impressive icefield outside the Arctic. Luncheon is provided at Columbia Icefield Chalet. Distance is approximately 150 miles return.
- 13TH DAY — Leave at 2.30 PM from the lodge for a three-hour tour to Mount Edith Cavell and Angel Glacier — one of the outstanding scenic drives in the park, offering spectacular vistas of mountain grandeur. Distance is approximately 44 miles return.
- 14TH DAY — Transfer is provided to Jasper Station.  
Lv. **Jasper** . . . . . 9.00 AM Canadian National Railways "Super Continental" (CNR Station).  
Lower berth is provided.
- 16TH DAY — Ar. **Montreal** . . . . . 4.45 PM Canadian National Railways (Central Station).





**Vancouver, Canada's Pacific Coast metropolis.**



**View of downtown Victoria, capital of British Columbia.**

**12-DAY TOUR—MONTREAL TO JASPER, LAKE LOUISE AND BANFF**

Daily June 6th to August 31st inclusive.

	SINGLE	DOUBLE (EACH)	
First Class:	\$440.00	\$412.00	Rates shown include accommodation at Jasper Park Lodge,
Tourist Class:	\$402.00	\$374.00	Chateau Lake Louise and Banff Springs Hotel. For rates
Coaches only:	\$370.00	\$342.00	at standard hotels in Lake Louise and Banff, deduct:
			\$34.00 from single rate and \$25.00 from double rate.

1ST DAY — Lv. **Montreal**..... 3.15 PM Canadian National Railways "Super Continental" (Central Station).

3RD DAY — Ar. **Jasper**..... 6.30 PM Canadian National Railways (CNR Station).  
Lower berth is provided.

Transfer is provided to Jasper Park Lodge, also a room with bath for three nights, all meals commencing and terminating with breakfast and the following motor drives:

4TH DAY — Leave at 2.30 PM from the lodge for a three-hour tour to Mount Edith Cavell and Angel Glacier — one of the outstanding scenic drives in the park, offering beautiful vistas of mountain grandeur. Distance is approximately 44 miles return.

5TH DAY — Leave at 9.15 AM from the lodge for a three-hour general drive, including the town of Jasper, Patricia and Pyramid lakes at the base of Pyramid Mountain, thence across the Athabaska Valley to Maligne Canyon, a tremendous gorge descending to a depth of 188 feet.

6TH DAY — After breakfast, leave **Jasper Park Lodge** at 9.00 AM, via Jasper Lodge motor transport, en route to Lake Louise. You traverse the scenic highway through the very heart of the Rockies, with a stop at Columbia Icefield, the largest and most impressive icefield outside the Arctic. Luncheon is provided at Columbia Icefield Chalet.

Arrive **Lake Louise** at 6.00 PM. A room with bath, and all meals, are provided for two nights, also the following motor drives:

7TH DAY — At 10.00 AM, leave from the hotel for a two-hour tour to Moraine Lake and Valley of the Ten Peaks — a most scenic drive.

At 2.00 PM, leave from the hotel for a four-hour tour to Emerald Lake via Yoho Valley, Continental Divide and Field — a most comprehensive tour.

8TH DAY — Free to enjoy the lovely walks, principally to the end of the lake.

Leave **Lake Louise** at 4.00 PM and arrive **Banff** at 6.30 PM.

A room with bath, and all meals, are provided for two nights, also the following motor drive:

9TH DAY — Leave at 1.30 PM from the hotel for a two-hour general drive around Banff. See such points of interest as animal paddocks, the Cave and Basin, Bow Falls and Tunnel Mountain Drive.

10TH DAY — Free time to visit the interesting town of Banff, walk around the Banff Springs Hotel grounds, and to re-visit points of interest seen on the tour.

Transfer is provided to Banff Station.

Lv. **Banff**..... 3.35 PM Canadian Pacific Railway "The Canadian" (CPR Station).

Lower berth is provided.

12TH DAY — Ar. **Montreal**..... 9.00 PM Canadian Pacific Railway (Windsor Station).

In addition to the tours listed in this booklet, the Department of Tours also operates special tours as follows:

#### STRATFORD FESTIVAL TOURS

Week-end tours from Montreal, Ottawa and Toronto, are operated from June to September. Tours are on a first class or coach class basis and include round-trip transportation to Stratford, choice seats for both matinee and evening performances at the Stratford Festival theatre, also room accommodation overnight at a private residence approved by the Stratford Festival Committee.

#### CONDUCTED GROUP TOURS TO NEW YORK

Over the Easter and Canadian Thanksgiving week-ends, escorted group tours are operated from Ottawa and Montreal to New York City at special reduced rates. Prices include round trip coach class transportation, hotel accommodation for three days and two nights, guaranteed seat in air-conditioned coach, pillow on train, and services of experienced tour escorts.

---

*Contact your Canadian National Railways representative or travel agent for further particulars.*



*All the Comforts  
of Home!*



*Meals and service in the dining car are excellent*



*Passengers pass happy hours in the buffet lounge*



*Connecting bedrooms are ideal for family travel*

That's the way you'll find it on all Canadian National main-line trains: cheerful surroundings, room to move about, a good night's sleep in a full-length bed, appetizing food served the way you like it, personal service and every modern convenience at your fingertips. The comforts of home aren't left behind . . . they go along with you.

Our passenger cars are custom-designed for relaxation and enjoyment. They offer a wide variety of accommodations to meet every travel need and budget.

*Whether you travel alone  
or with your family,  
you can't go wrong if you go  
**CANADIAN NATIONAL.***

