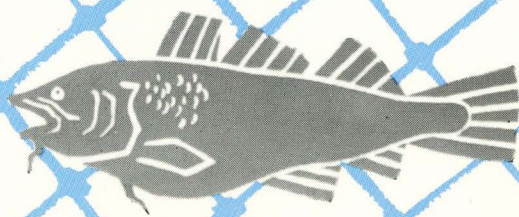




A huge pulp and paper plant is located at Corner Brook, Newfoundland



CANADIAN NATIONAL RAILWAYS

**NATIONAL RAILWAY
HISTORICAL SOCIETY**

Toronto - Stratford - Niagara Falls

AUGUST 31st, 1958

BREAKFAST

\$1.95

ORANGE JUICE

OR

TOMATO JUICE

OR

CEREAL WITH CREAM

SCRAMBLED EGGS WITH MINCED HAM

TOMATO OR CHEESE OMELET WITH STRIP OF BACON

BROILED HAM OR BACON WITH FRIED EGGS

MARMALADE

JAM

STRAINED HONEY

TOAST

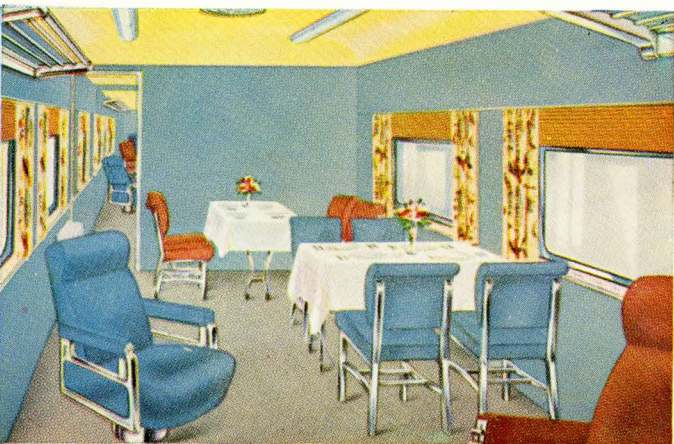
HOT ROLLS

POT OF TEA

MILK

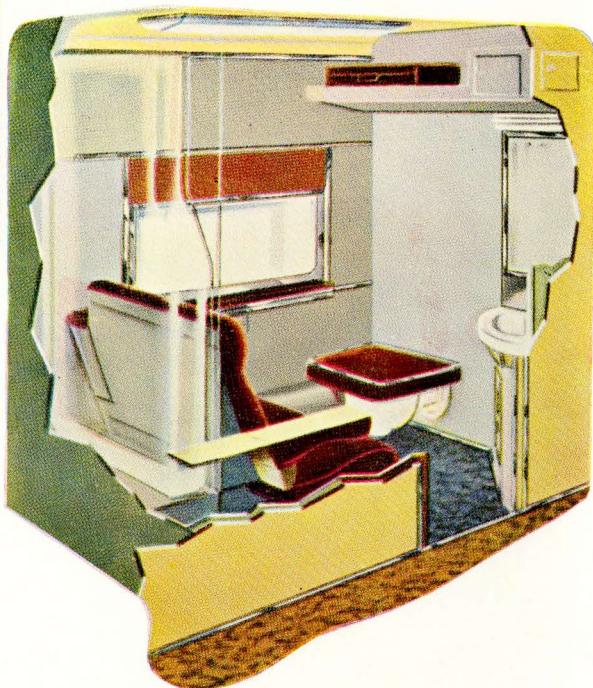
POT OF COFFEE

A New Accent on Travel Comfort



There's an inviting atmosphere of sociability in our parlor grill car with its comfortable chairs and informal dining facilities.

Ideal for single occupancy, the compact and attractive new roomettes offer complete day and night privacy with every modern travel convenience at a modest cost.



Your travel comfort is of prime importance to Canadian National. For that reason, only skilled craftsmen build the fixtures and furnishings in CNR coaches, sleeping cars, dining cars, dinettes and buffet lounge cars. Some of these fixtures are quite apparent; like the wide picture windows, reclining seats and air-conditioning units. Others — like roller bearing wheels, soundproofing and special springing — are not so obvious. Yet each is installed with just one thought in mind . . . that you have a pleasant trip.

CANADIAN NATIONAL

Serves all Canada