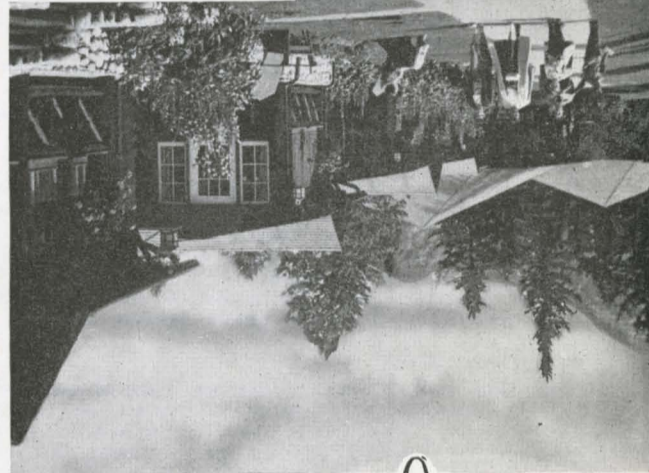


A view of the Lodge's spacious and comfortable lounge.



More than 500 guests may be served at one sitting in the large yet gracious dining room.



One of the hotel's streets of bungalows.



A view of the Central Building, Jasper Park Lodge, between Lac Beauvert and the Colin Range.



Jasper National Park, in the heart of the Canadian Rockies, is one of America's greatest summer resorts, owned and operated by the Canadian National Railways. It has accommodations for 650 guests and gives them all the comforts and conveniences of the most modern city hotels.

Without going very many steps from the main building or your bungalow, you may golf on one of the world's finest courses, play tennis, swim in a heated outdoor pool.

But you will want to explore the wide-spread Athabasca Valley and the mountains farther afield. If you don't feel like horse-back riding or hiking, you may take your sightseeing the easy way, from a motor car. There are hundreds of miles of trails and highways—to the Edith Cavell or to the spectacular Columbia Icefield.

Jasper is a wild life sanctuary and the only way you can bag the bears, the deer, the moose and elk, the big-horn sheep or the mountain goat is with the camera. But the innumerable lakes are stocked with fighting trout for the angler looking for real sport in wonderful surroundings.

"I've heard so much about Jasper. Some day I must go . . ." you may be saying to yourself. Well, now is the time!

Any Canadian National agent will be glad to help you plan your trip.

JASPER NATIONAL PARK

4,200 Square Miles of Scenic Grandeur

JASPER PARK LODGE

Open June 14th to September 15th, 1956

Activities and Facilities

- Boating:** Boats and canoes for rent—50c per hour.
- Camera Supplies:** Available at Camera Shop. One-day developing service.
- Church Services:** Anglican, Roman Catholic, United Church services every Sunday in town of Jasper.
- Dancing:** 9 to 12 midnight except Sunday.
- Fishing:** Speckled, rainbow, Dolly Varden and lake trout are plentiful in nearby lakes and streams. Boats and guides available. Fishing licence \$1.00, good for two months.
- Golf:** 18-hole championship course. Expert instructor. Caddies available. Green fees \$3.00 a day per person. Golf week Totem Pole Tournament, September 2 to 8, 1956.
- Medical Services:** Graduate nurse in constant attendance. Services of physician available 24 hours a day.
- Movies:** 7.45 to 8.45 nightly except Sunday.
- Riding:** Saddle and trail trips. Guide service. Guests should bring suitable clothing.
- Sightseeing:** Splendid motor drives to all scenic attractions in Jasper National Park by bus or luxurious automobiles. Competent chauffeurs act as guides. Combined motor and boat trips also available.
- Swimming:** Heated outdoor pool. No charge to guests.
- Table Tennis:** In Recreation Room, Central Building.
- Tennis:** Four hard-surfaced courts. No charge to guests. Guests should bring their own racquets.
- Other Facilities:** Banking—Imperial Bank of Canada. Barber shop, shoe shine parlor and beauty parlor. Laundry and Valet service. Lending Library. Novelty and Specialty Shops. Post Office. Safety Deposit Boxes. Snack Bar. Tavern. Telegraph Service. Transportation Desk.

DAILY RATES

American Plan (includes meals)
Subject to change without notice.

	Single	Double
Without private bath.....	\$14.50 up	\$26.00 up
With private bath.....	17.50 up	32.00 up



Jasper

NATIONAL PARK

CANADIAN ROCKIES



ALL-EXPENSE TOURS

Visitors may purchase All-Expense Tours of Jasper National Park covering stays of one to four days. These Package Tours include the most popular drives and have been arranged to enable guests to make full use of their stay at Jasper Park Lodge. Tour rates are based on minimum rates for room and meals. Rail fares to and from Jasper, or motor coach fares between Jasper and Lake Louise, Banff, etc., are not included. Full details may be obtained from your nearest Canadian National representative or your Travel Agent, from whom the desired tour may be purchased in advance.

Details of some of the Tours available are as follows:

For the benefit of guests arriving Jasper Park Lodge by transcontinental trains from points East and West of Jasper and departing by trains to points East and West of Jasper.

TOUR No. 11—

One day visit—Covers American Plan accommodation at Jasper Park Lodge, the 44-mile motor drive to Mount Edith Cavell, as well as bus transfer between the station and the Lodge. Open time for golf, tennis, horse-back riding, swimming, etc. Cost per person: without private bath, single \$20.50, double \$18.00; with private bath, single \$22.50, double \$21.00.

TOUR No. 13—

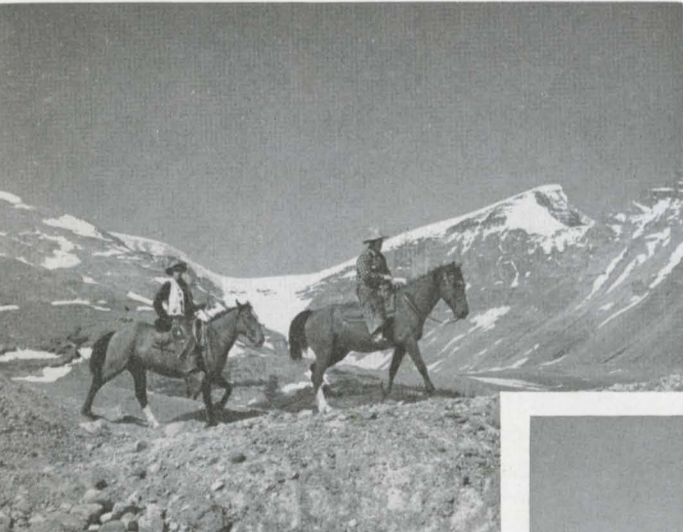
Three day visit—Covers American Plan accommodation at Jasper Park Lodge, 80-mile drive to Miette Hot Springs, the famous Columbia Icefield Drive, the General Drive, as well as bus transfer between the station and the Lodge. Open time for golf, tennis, horse-back riding, swimming, etc. Cost per person: without private bath, single \$67.50, double \$60.00; with private bath, single \$73.50, double \$69.00.



The swift waters of the Maligne River make for good sport.



Moments of lazy pleasure on Lac Beauvert.



One of the best ways to see the mountains is from the back of a pony . . .



. . . There are many excellent motor drives, too.

DETAILS OF SOME OF THE MORE POPULAR DRIVES

General Drive—Thirty-five miles return. Motors leave the Lodge at 9.15 a.m. and 2.30 p.m. Time, approximately 3 hours. Bus fare per person, \$4.00. This drive embraces a wide variety of scenery and includes a visit to the Fish Hatchery. The route, after following the Athabaska River, skirts Lakes Annette and Edith before gradually ascending the roadway to Maligne Canyon and continuing along to the foot of Pyramid Mountain and passing en route Lakes Patricia and Pyramid.

Glacier of the Angel (Mount Edith Cavell) — Forty-four miles return. Motors leave the Lodge at 9.15 a.m. and 2.30 p.m. Time, approximately 3 hours. Bus fare per person, \$4.00. Offering excellent motoring, this drive reaches an altitude of nearly 2,000 feet above the floor of the valley. Light lunches and refreshments may be obtained at the Tea Room near the Glacier.

Columbia Icefield (Jasper-Banff Highway) — One hundred and fifty miles return. Motors leave the Lodge at 9.00 a.m. Time, approximately 7 hours. Bus fare per person, \$10.00 Minimum, 5 persons. The drive follows the route of the Mount Edith Cavell Drive to a point beyond the crossing of the Astoria River, whence it continues along the valley of the Athabaska. From here the route penetrates through the very heart of the Canadian Rockies to the largest and most impressive icefield outside the Arctic Circle. With an estimated area of 110 square miles the average elevation of this amazing icefield is between 9,000 and 10,000 feet.

Unquestionably this is America's Greatest Scenic Drive.

U.S. Government Revenue tax, when applicable on tickets or orders purchased in U.S., is additional to rates quoted above.

For the benefit of guests arriving Jasper Park Lodge by transcontinental trains from points East and West of Jasper and departing by motor bus to Lake Louise, Banff, Calgary, etc.

TOUR No. 32—

Two day visit—Covers American Plan accommodation at Jasper Park Lodge, the General Drive, Mount Edith Cavell Drive, "Twilight Drive" to Punch Bowl Falls, as well as bus transfer from the station to Lodge. It also permits open time for golf, tennis, horse-back riding, swimming, etc. Cost per person: without private bath, single \$40.75, double \$35.75; with private bath, single \$44.75, double \$41.75.

TOUR No. 33—

Three day visit—Covers American Plan accommodation at Jasper Park Lodge, the General Drive, Mount Edith Cavell Drive, Miette Hot Springs Drive, as well as bus transfer from the station to Lodge, with open time for golf, tennis, swimming, horse-back riding or motoring. Cost per person: without private bath, single \$58.75, double \$51.25; with private bath, single \$64.75, double \$60.25.

For the benefit of guests arriving Jasper Park Lodge by motor bus from Lake Louise, Banff or Calgary and departing by trains for points East and West of Jasper.

TOUR No. 41—

One day visit—Covers American Plan accommodation at Jasper Park Lodge, the Mount Edith Cavell Drive, as well as bus transfer from the Lodge to station. It also permits open time for golf, tennis, horse-back riding, swimming, etc. Cost per person: without private bath, single \$20.00, double \$17.50; with private bath, single \$22.00, double \$20.50.

TOUR No. 44—

Four day visit—Covers American Plan accommodation at Jasper Park Lodge, the General Drive, Mount Edith Cavell Drive and Miette Hot Springs Drive, as well as bus transfer from Lodge to station, with additional open time for golf, tennis, swimming, horse-back riding, etc. Cost per person: without private bath, single \$76.50, double \$66.50; with private bath, single \$84.50, double \$78.50.

U.S. Government Revenue tax, when applicable on tickets or orders purchased in U.S., is additional to rates quoted above.

SADDLE TRIPS

Arrangements may be made at "Fred Brewster's Rocky Mountain Camps" in the Central Building, or any CNR office, for all scheduled and special short saddle trips and for guide service.

RATES FOR SADDLE HORSES

Note: For a horse or a guide, one day consists of not more than nine (9) hours and not more than twenty (20) miles.

Mountain horses \$4.50 per half day, \$6.50 per day. Special rate of \$35.00 per week for reserved horses.

The combined motor drive and trail trip into Tonquin Valley, one of the outstanding beauty spots of the Canadian Rockies, is an impressive 52-mile return tour.

Fully qualified and thoroughly dependable guides are available. The cost of a mounted guide is \$6.00 per half day and \$10.00 per day. One guide is required for a party numbering up to 5 persons; an extra one, for more than 5 persons.

WHAT TO WEAR

At the Lodge dress is informal. The evenings being cool (altitude 3,470 feet), visitors should bring a coat or wrap. For motoring, riding, fishing, hiking, etc., guests should bring suitable clothing.

RESERVATIONS

Full information regarding fares, rates and reservations at Jasper Park Lodge and all matters pertaining to travel in Canada may be obtained from any Canadian National Passenger representative. Canadian National offices in the U.S.—Boston, Buffalo, Chicago, Cincinnati, Detroit, Flint, Kansas City, Los Angeles, Milwaukee, Minneapolis, New York, Philadelphia, Pittsburgh, Portland, Maine, San Francisco, Seattle, St. Louis, Washington, D.C.



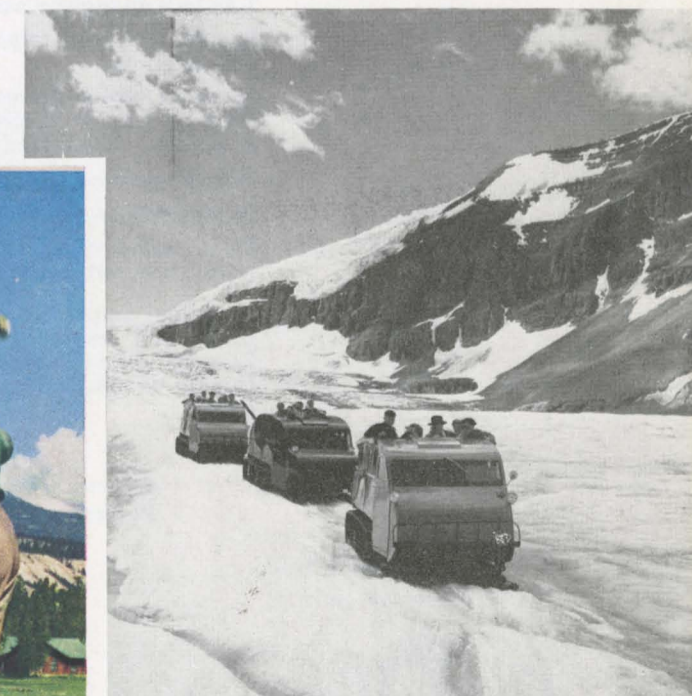
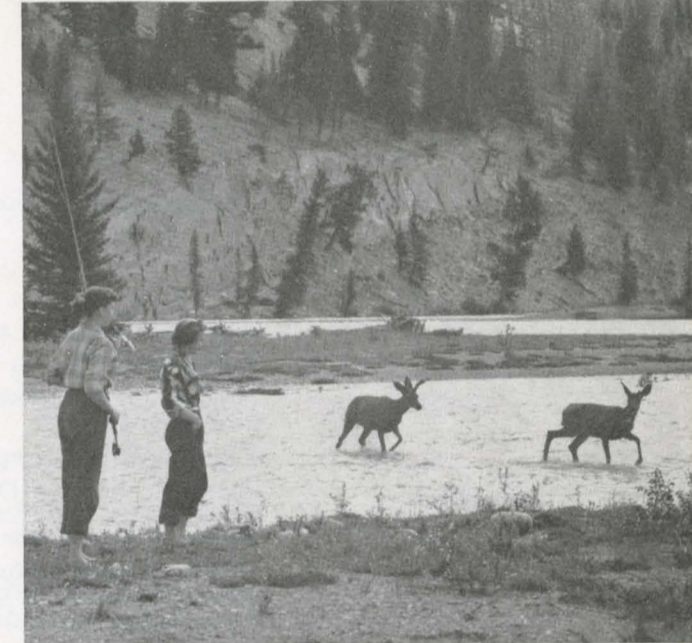
Never come to Jasper without your camera.



The Lodge's outdoor swimming pool is heated.



You can't really see Maligne Lake unless you take the launch trip.



Snowmobiles on the Athabaska glacier of the Columbia Icefield.



Jasper's course gives you golf at its finest.