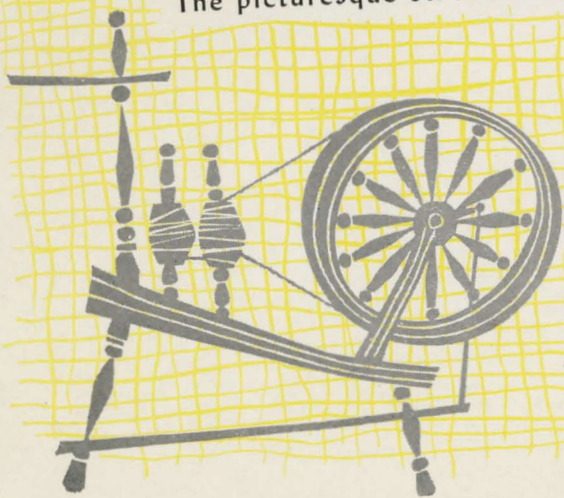


The picturesque St. Francis River, Quebec.



CANADIAN NATIONAL RAILWAYS



DINING CAR SERVICE

CANADIAN NATIONAL—CANADIAN PACIFIC POOLED TRAIN SERVICE

A la Carte

RELISHES ETC.

BLENDED FRUIT JUICE 30c TOMATO JUICE 30c
APPLE JUICE 30c OLIVES 30c
CANADIAN SARDINES (Fancy Pack) 55c

SOUPS

TUREEN 50c; CUP 30c
(See Table d'Hote Menu)

FISH

BROILED OR FRIED FISH \$1.20

EGGS OMELETS ETC.

BROILED BACON (5 Strips) \$1.20; (3 Strips) 90c
BROILED SUGAR CURED HAM (Full Cut) \$1.20; (Half Cut) 90c
GRILLED HAM WITH FRIED EGGS \$1.30; (with 1 Egg) \$1.10
GRILLED BACON WITH FRIED EGGS \$1.30; (with 1 Egg) \$1.10
BOILED OR FRIED EGGS (2) 75c; (1) 40c SCRAMBLED EGGS 75c
POACHED EGGS ON TOAST (2) 75c; (1) 40c
PLAIN OMELET WITH STRIP OF BACON 90c
PARSLEY, TOMATO OR CHEESE OMELET WITH STRIP OF BACON 95c
HAM OR BACON OMELET \$1.05

SALADS

SLICED TOMATO OR HEAD LETTUCE SALAD 90c
LOBSTER SALAD "NATIONAL" \$1.15 CHICKEN SALAD \$1.15
(Dressing without Oil, Mayonnaise or French Dressing)

VEGETABLES

BOILED OR MASHED POTATOES 25c
LYONNAISE OR HASHED BROWNED POTATOES 40c
VEGETABLES 35c
(See Table d'Hote Menu)

DESSERTS

STRAINED HONEY 35c ICE CREAM 30c; WITH WAFERS OR CAKE 35c
ICE CREAM SUNDAES 35c
CANADIAN CHEDDAR OR OKA CHEESE WITH BISCUITS 40c
PIE (Per Cut) 30c PUDDING 35c ✓
(See Table d'Hote Menu)

SANDWICHES

(SANDWICHES. White or brown bread. Plain or toasted)
CHEESE 40c FRIED EGG 45c HAM 55c TOMATO 40c
✓ CHICKEN 75c HAM AND EGG 75c

BREADS

WHITE OR BROWN BREAD 20c HOT ROLLS 20c

BEVERAGES

TEA (Per Pot) 30c COFFEE (Per Pot) 30c COCOA (Per Pot) 30c
INDIVIDUAL SPECIAL MILK 20c ✓
INSTANT POSTUM (Per Pot) 30c

(MEALS FOR CHILDREN UNDER TWELVE YEARS OF AGE MAY BE
SELECTED FROM CHILDREN'S MENU, OR HALF PORTIONS FROM
THE REGULAR MENU AT HALF PRICE.)

Beverages

Cigars and Cigarettes

Mineral Waters Etc.		Splits	Pints
	Club Soda.....	15c	25c
	Sparkling Water.....	15c	25c
	Dry Ginger Ale.....	15c	25c
	Soft Drinks.....	15c	

	Glass
Lemonade Plain	20c
Lemonade with Soda.....	30c
 Bromo Seltzer.....	 15c

Cigars and Cigarettes (City Prices)	Choice Havana Cigars.....	15c and 20c each
	Cigarettes.....	33c per pkg.

Provincial tax will be added where effective.

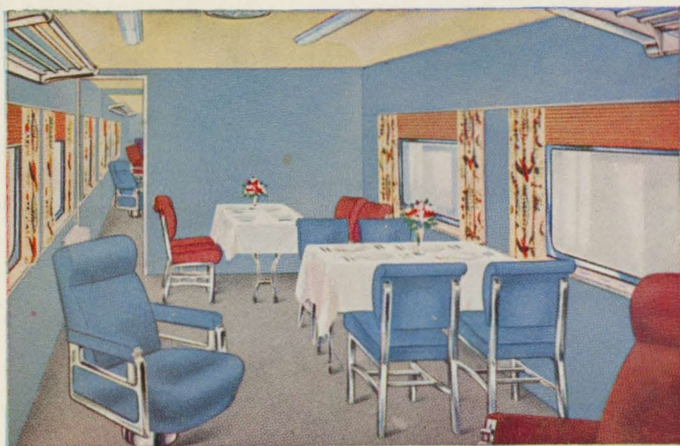
Your comments on the service will be appreciated.

H. A. SIMONS, General Manager
Sleeping, Dining and Parlor Car Department
Montreal, Que.

T.U.

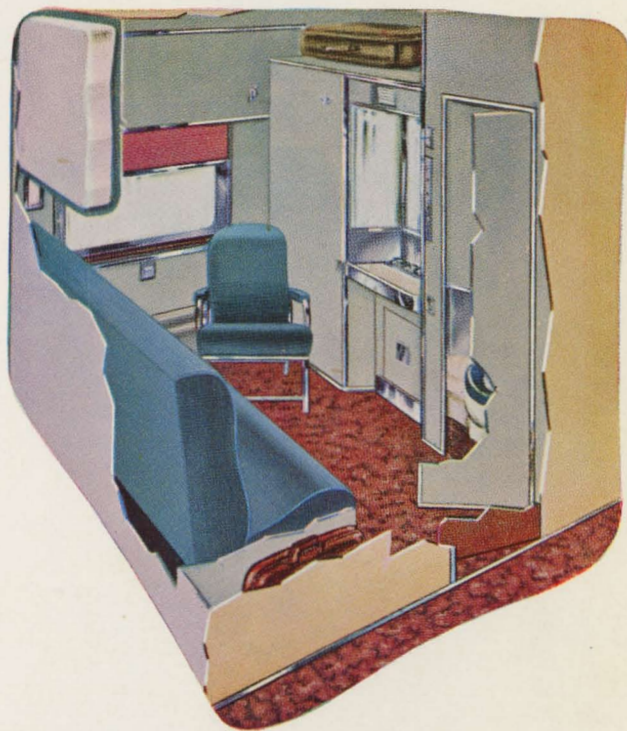
8-13-55 eve, meal

A New Accent on Travel Comfort



There's an inviting atmosphere of sociability in our parlor grill car with its comfortable chairs and informal dining facilities.

A compartment is an ideal way for two or more people to travel. At night the sofa converts to a bed and an upper berth swings out of the wall.



New standards of style and comfort have been established on our principal trains everywhere in Canada as a result of CNR's main-line modernization program, largest of its kind in Canadian railway history. Our new passenger cars are tops in travel-living. All of them — coaches, sleeping cars, dining room cars, dinettes, parlor cars and lounges — have wide picture windows, roller bearing wheels, soundproofing, special snubbing and springing. There are many other features, too, designed for your comfort and enjoyment. They offer a wide choice of accommodations for every travel budget.

CANADIAN NATIONAL
Serves all Canada





Travel Living

Table d'Hote Dinners

(Price opposite main course includes complete meal)

GRAPEFRUIT JUICE OR CRISPED CELERY
BEEF ANGLAISE OR CONSOMME HOT OR JELLIED

SELECTIONS

BROILED LAKE TROUT, LEMON BUTTER \$2.60
COLD BOILED SALMON, MAYONNAISE \$2.60
GREEN PEPPER OMELET WITH STRIP OF BACON \$2.60
BROILED HAM STEAK, PINEAPPLE SAUCE \$2.70
ROAST PRIME RIBS OF BEEF, AU JUS \$3.00
CHARCOAL BROILED SIRLOIN STEAK \$4.25

VEGETABLES

BOILED OR SCALLOPED POTATOES
WAX BEANS OR BUTTERED NEW CARROTS

Lettuce and Egg Salad, Mayonnaise
(Served with these meals, 25c additional)

FRENCH OR BROWN BREAD HOT ROLLS

DESSERTS

BLUEBERRY PIE
SNOW PUDDING, CUSTARD SAUCE
FRUIT SUNDAE
CANADIAN CHEDDAR OR OKA CHEESE WITH BISCUITS
POT OF TEA POT OF COFFEE MILK BUTTERMILK
ICED TEA ICED COFFEE



