

Yours to Command WHEN YOU TRAVEL . . .

A whole fleet of new passenger cars — sleeping cars of entirely new design, comfortable coaches, parlor cars, diners, unique dinettes, and buffet-lounge cars. This equipment, the largest order of its kind in Canadian railroad history, embraces a wide range of modern accommodations. Designed for travel-living at its best, these new cars are now in service on all our main-line trains in the United States and Canada, including:

- The International Limited, Maple Leaf and Inter City Limited
- The Washingtonian and Montrealer
- The Super-Continental and The Continental
- The Ocean Limited, Scotian and Maritime Express

Fast DEPENDABLE FREIGHT SERVICE



GRAND TRUNK WESTERN CENTRAL VERMONT RAILWAY

THE LARGEST RAILWAY SYSTEM IN AMERICA



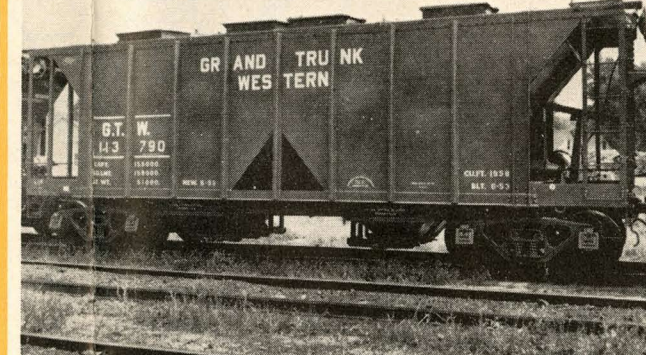
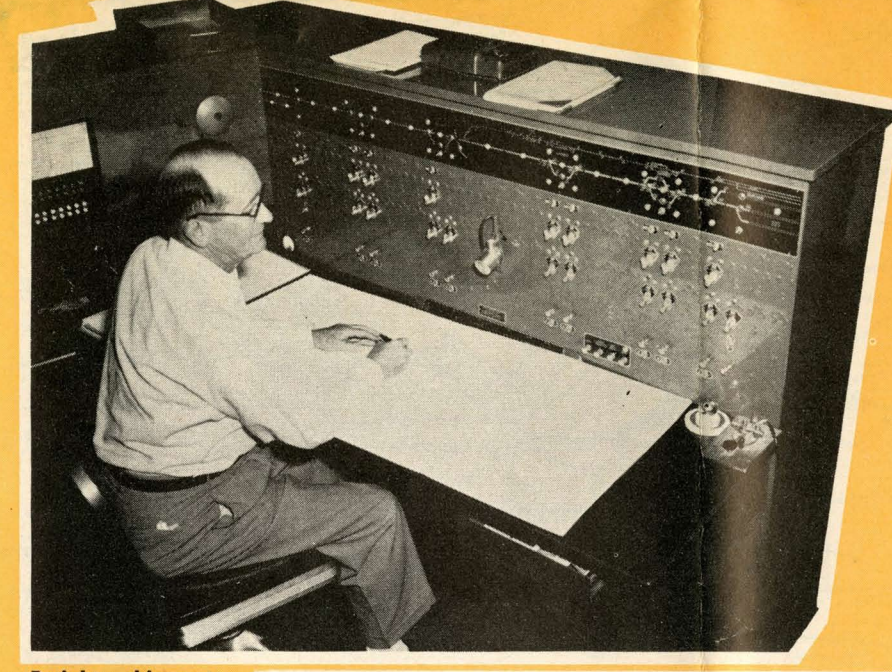
CANADIAN NATIONAL RAILWAYS LINES IN THE UNITED STATES

FREIGHT TRAFFIC OFFICERS

- J. V. Maloney, Assistant Vice-President, Chicago, Ill.
M. J. Sefcik, Assistant to Assistant Vice-President, Chicago, Ill.
- | | | | | | | | | | | | | | | | | | | | |
|---|---|--|--|---|---|---|--|--|---|--|---|---|--|--|--|---|--|---|---|
| L. B. Freeman, Freight Traffic Manager, Chicago, Ill. | R. A. Norris, Assistant Freight Traffic Manager, Detroit, Mich. | G. O. Thoresen, Assistant Freight Traffic Manager, Buffalo, N.Y. | P. C. Hankey, Assistant Freight Traffic Manager, Chicago, Ill. | J. M. Frank, General Freight Agent, (Rates) Chicago, Ill. | J. J. Medrow, General Freight Agent, (Rates) Detroit, Mich. | M. A. O'Brien, General Freight Agent, Buffalo, N.Y. | A. M. Sharpe, General Freight Agent, Chicago, Ill. | W. J. Gohr, General Freight Agent, Boston, Mass. | O. K. Daly, General Eastern Freight Agent, New York, N.Y. | H. R. Fish, Assistant General Freight Agent, (Rates) Chicago, Ill. | E. F. Elina, Assistant General Freight Agent, Chicago, Ill. | H. W. Hanes, General Coal Agent, Detroit, Mich. | C. Giles, Assistant General Freight Agent, (Rates) St. Albans, Vt. | A. W. Manchester, Assistant General Freight Agent, (Rates) Chicago, Ill. | J. W. Edwards, Chief of Tariff Bureau, St. Albans, Vt. | G. E. Hilton, Foreign Freight Agent, New York, N.Y. | T. L. Keenan, Foreign Freight Agent, Chicago, Ill. | B. H. Thome, Foreign Freight Agent, Chicago, Ill. | G. M. Newby, Foreign Freight Agent, Chicago, Ill. |
|---|---|--|--|---|---|---|--|--|---|--|---|---|--|--|--|---|--|---|---|

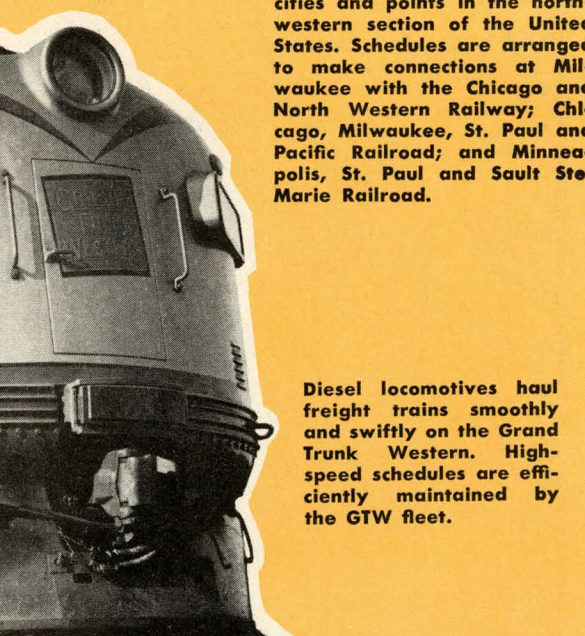
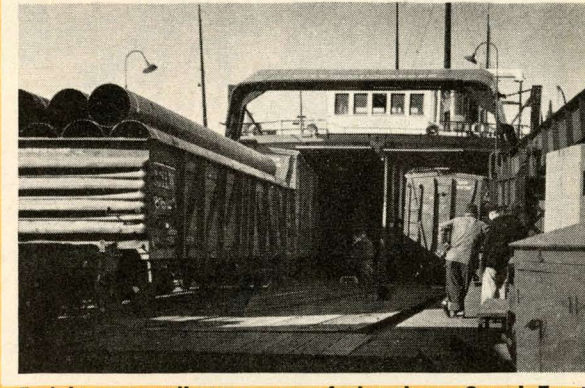
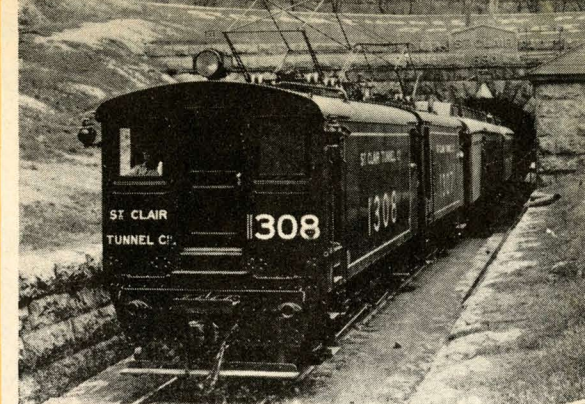
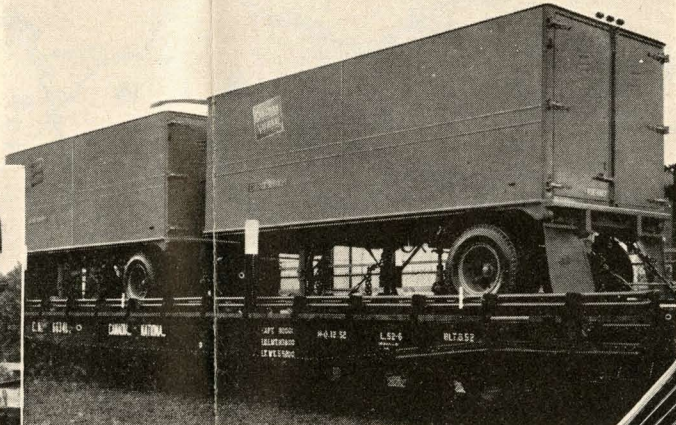
AGENCIES

- | | | | | | | | | | | | | | | | | | | | | | | | | | | | | | | | | | | | | | | | | | | | | | | | | | | | | | | | | | | | | | | | | | | | | | | | | | |
|--|--|-------------------------------------|--|----------------------------------|---|--|--|---|---|--------------------------------------|---------------------------------------|--|---------------------------------------|--|--|--------------------------------------|--|---|-------------------------------------|---------------------------------------|---|--------------------------------|-----------------------------------|--|--------------------------------------|----------------------------------|--|--------------------------------------|--|----------------------------------|--|-----------------------------------|--------------------------------------|-----------------------------------|---|---|-----------------------------|-------------------------------|------------------------------|---------------------------|---|--------------------------|--------------------------|----------------------------|----------------------------|------------------------------------|------------------------------|---------------------------|-------------------------------|--------------------------|--|-----------------------------|-----------------------------|-----------------------------|-------------------------------------|----------------------------|------------------------------|----------------------------|-----------------------------|-----------------------------|----------------------------|---|----------------------------|------------------------------|----------------------------|----------------------------|----------------------------|-----------------------------|------------------------------|-------------------------------|--|------------------------------------|------------------------------------|
| Bartle Creek, Mich., Mich. Nat'l. Bank Bldg. | Birmingham 3, Ala., 924-6 Brown-Marx Bldg. | Boston 10, Mass., 80 Federal Street | Boston 9, Mass., 64 Fruit & Produce Exchange | Buffalo 2, N.Y., 238 Main Street | Cedar Rapids, Ia., 103 Second St., South East | Chicago 3, Ill., 105 West Adams Street | Cincinnati 2, Ohio, Room 206, Dixie Terminal Bldg. | Cleveland 13, Ohio, 1310 Terminal Tower Bldg. | Detroit 26, Mich., 131 W. Lafayette Blvd. | Duluth 2, Minn., 418 W. Superior St. | Flint 3, Mich., 108 East Scarsley St. | Grand Rapids 2, Mich., 201 Monroe Avenue | Kansas City 6, Mo., 414 Fairfax Bldg. | Los Angeles 14, Calif., 510 West Sixth St. | Mason City, Ia., First National Bank Bldg. | Memphis 3, Tenn., 130 Madison Avenue | Milwaukee 2, Wis., 741 North Milwaukee St. | Minneapolis 2, Minn., Sixth & Marquette | Montreal 3, Quebec, Central Station | New Haven 10, Conn., 39 Church Street | New Orleans 12, La., 210 Baronne Street | New York 7, N.Y., 233 Broadway | Omaha 2, Neb., 1319 Farnam Street | Philadelphia 7, Pa., Lincoln Liberty Bldg. | Pittsburgh 22, Pa., 355 Fifth Avenue | Portland 3, Me., G.T.Ry. Station | Portland 5, Ore., 905 Terminal Sales Bldg. | St. Louis 2, Mo., 314 North Broadway | St. Paul 1, Minn., W2672 First National Bank Bldg. | Saginaw 2, Mich., 203 Eddy Bldg. | San Francisco 4, Calif., 681 Market Street | Seattle 1, Wash., 214 Vance Bldg. | South Bend 21, Ind., G.T.Ry. Station | Toledo 4, Ohio, 245 Summit Street | Tulsa 3, Okla., 321 South Boston Avenue | Washington 5, D.C., 922 15th Street, N.W. | D. A. Kantor, General Agent | W. G. Fielding, General Agent | M. W. Simpson, General Agent | J. Q. Street, Dairy Agent | C. E. Heidenburg, Comm. Freight & Dairy Agent | E. J. Lee, General Agent | W. McLeod, General Agent | G. R. Nolan, General Agent | H. W. Seale, General Agent | A. F. Lees, Division Freight Agent | A. F. Johnson, General Agent | D. L. Bost, General Agent | T. P. McCarthy, General Agent | S. Emberg, General Agent | G. O. Rundquist, Comm. Freight & Dairy Agent | L. M. Taylor, General Agent | J. C. Grantz, General Agent | D. A. Teskey, General Agent | P. M. Ege, General Agent (C.V. Ry.) | S. C. White, General Agent | W. A. Kennedy, General Agent | W. L. Scott, General Agent | R. G. Holden, General Agent | R. A. Larsen, General Agent | F. J. Foley, General Agent | R. J. MacDonald, Division Freight Agent | J. C. Burns, General Agent | H. T. Doherty, General Agent | W. J. Kelly, General Agent | W. L. Scott, General Agent | P. B. Clark, General Agent | C. W. Nelson, General Agent | A. R. Menning, General Agent | J. M. Veveyete, General Agent | E. A. Russell, Traveling Freight Agent | P. F. Jett, Special Representative | H. A. Hart, Special Representative |
|--|--|-------------------------------------|--|----------------------------------|---|--|--|---|---|--------------------------------------|---------------------------------------|--|---------------------------------------|--|--|--------------------------------------|--|---|-------------------------------------|---------------------------------------|---|--------------------------------|-----------------------------------|--|--------------------------------------|----------------------------------|--|--------------------------------------|--|----------------------------------|--|-----------------------------------|--------------------------------------|-----------------------------------|---|---|-----------------------------|-------------------------------|------------------------------|---------------------------|---|--------------------------|--------------------------|----------------------------|----------------------------|------------------------------------|------------------------------|---------------------------|-------------------------------|--------------------------|--|-----------------------------|-----------------------------|-----------------------------|-------------------------------------|----------------------------|------------------------------|----------------------------|-----------------------------|-----------------------------|----------------------------|---|----------------------------|------------------------------|----------------------------|----------------------------|----------------------------|-----------------------------|------------------------------|-------------------------------|--|------------------------------------|------------------------------------|



Yours to Command . . .

- In most major cities of the United States is a Canadian National-Grand Trunk freight traffic office to give you prompt, personalized service.
- In any city or town is the CN-GT representative assigned to your territory. A wire, letter or phone call will bring him to you immediately to discuss your shipping problems — large or small. He stands ready to answer your questions on rates, routings, packing, handling, special services that will get your shipment to its destination speedily and safely.
- Pick-up and delivery service to connect with fast freight schedules, giving door-to-door convenience to both you and your consignee.
- Traffic officials who will study your freight problems to help you get the best merchandising advantage at the lowest cost from shipping by Canadian National-Grand Trunk.
- Specialized services of a Foreign Freight Department on export and import matters and of departments devoted to the movement of coal, automobiles, general merchandise, dairy and agricultural products and raw materials.
- The system's departments of Research, Development, Colonization and Agriculture, to provide you with up-to-date information on markets, agriculture, mining and water power in Canada and the United States.
- An Industrial Department which constantly conducts surveys to locate and develop industrial sites and advise you if you are seeking a new location for your plant.
- The latest and best freight cars of all descriptions, hauled by diesel locomotives over the Canadian National-Grand Trunk roadbed, which is constantly being maintained at the highest degree of smoothness.
- Co-ordinated services of America's largest railway system, operating over 24,000 miles of track, with 120,000 employees. Important parts of the system are its four United States lines—Grand Trunk Western, Central Vermont, Grand Trunk New England Lines and Duluth, Winnipeg & Pacific.
- The Detroit and Toledo Shore Line, of which the Grand Trunk Western is half-owner. This is the only double track freight line between Toledo and Detroit, assuring excellent service between Toledo and Canadian National-Grand Trunk points and connecting lines. Scheduled through trains are operated between Toledo and Detroit, Durand and Flint.
- Through manifest freight trains, insuring shippers and receivers located on Grand Trunk lines and connections in Central, Eastern, Southern, Southwestern and Western states, the Canadian National in Canada and Grand Trunk and Central Vermont lines in New England, fast, dependable service between important cities and gateways, including Chicago, Milwaukee, Detroit, Port Huron, Toronto, Montreal, Halifax, Buffalo, Portland, Me. and — via connecting lines — Boston, New York and Philadelphia. An added gateway to Western Canada from the United States is provided by the Duluth, Winnipeg & Pacific.





CANADIAN NATIONAL RAILWAY SYSTEM

Canadian National Railways Grand Trunk Western Railroad Company
 Central Vermont Railway Inc. Duluth, Winnipeg & Pacific Railway Company
 Detroit & Toledo Shore Line Railroad Northern Alberta Railways

LEGEND

System Mileage 24,000 Miles

- Canadian National System
- - - Joint Ownership
- · - · - Line Under Construction
- · - · - Canadian National Steamships
- ★ Canadian National Hotels
- Off Line Traffic Offices

Scale of Miles
 0 50 100 150 200

