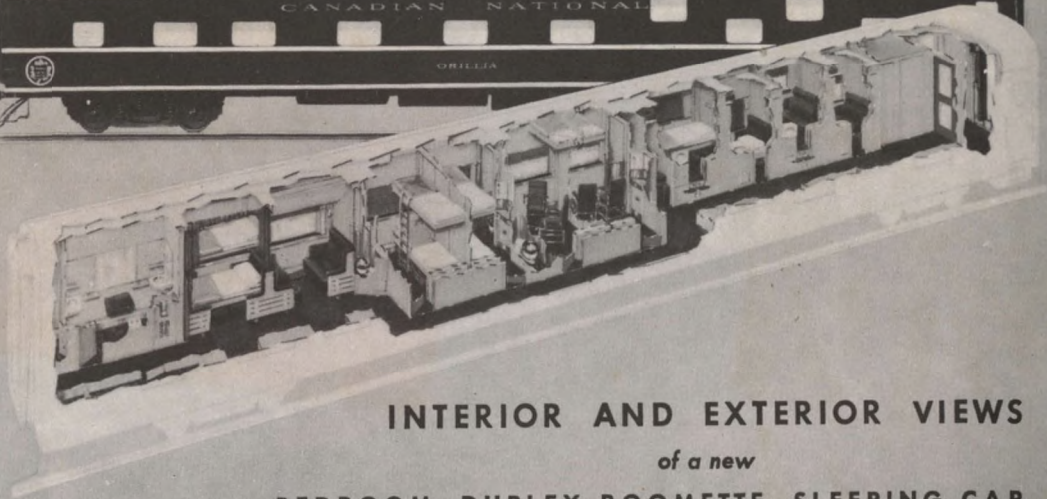




SMART NEW
Comfort

WHEREVER YOU GO

by **CNR**



INTERIOR AND EXTERIOR VIEWS
of a new
BEDROOM, DUPLEX ROOMETTE, SLEEPING CAR

DESIGN FOR TRAVEL-LIVING . . .

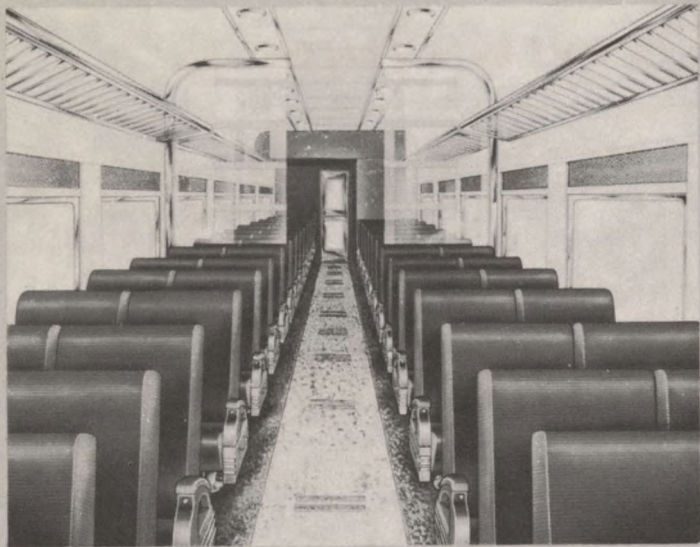
THIS year* we are doing something we have wanted to do for a long time. We are modernizing *all* our main-line passenger trains.

By mid-summer, a whole fleet of sparkling new passenger cars will be rolling across the country on *all* the CNR's principal runs. Some are already in service; the rest are on their way. When all 359 of these cars have been delivered, the largest modernization project of its kind in Canadian railway history will be complete.

Everything about these cars is new. The finest features that modern design and engineering skill have been able to devise are built into them for your comfort, safety and enjoyment. They are the best that \$58,000,000 can buy, and they are your guarantee that wherever you go by Canadian National you'll get the smartest, smoothest ride you've ever had. They are truly a design for travel-living.

All sleeping cars, coaches, parlor cars, diners and the unique dinettes are spacious, attractive to the eye and up-to-the-minute in every way. They offer a variety of accommodations tailored to meet every travel need and every budget.

We're proud of these cars. In the sketches and descriptions that follow we'd like to tell you why.



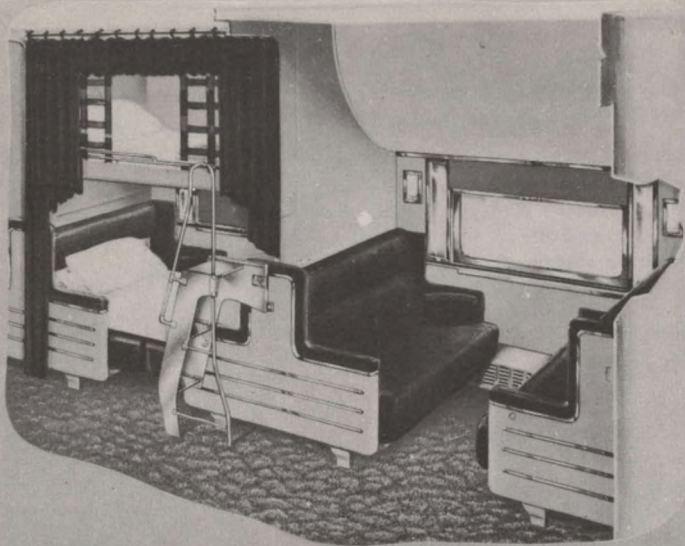
◀ COACH

HERE is the answer for those who want good modern transportation priced within reach of the average pocketbook: the CNR's new 80-passenger all-steel coaches.

These cars bring a touch of luxury to an economical way of travelling with their tastefully appointed interiors, wide picture windows, shadowless overhead lighting and foam-rubber adjustable seats. The air-conditioning is mechanically controlled, and the drinking water electrically cooled. For those who smoke, 28 seats are separated from the rest of the car by a glass partition. Roller bearings, all-coil springs and shock absorbers assure a smooth, restful ride unexcelled on any railway.

The Canadian National is putting into service 218, or more than three and a half miles, of these new coaches—enough to serve travellers in every part of the country. For comfort, beauty and economy, you can't beat them.

Example of cost: A one-way ticket from Montreal to Ottawa is only \$3.90, a round-trip ticket \$7.00.

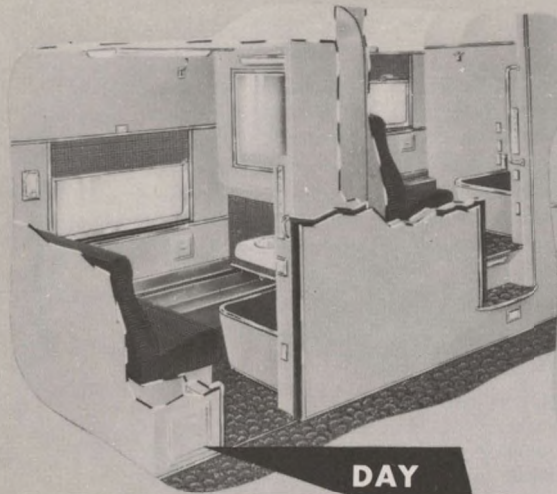


SECTION

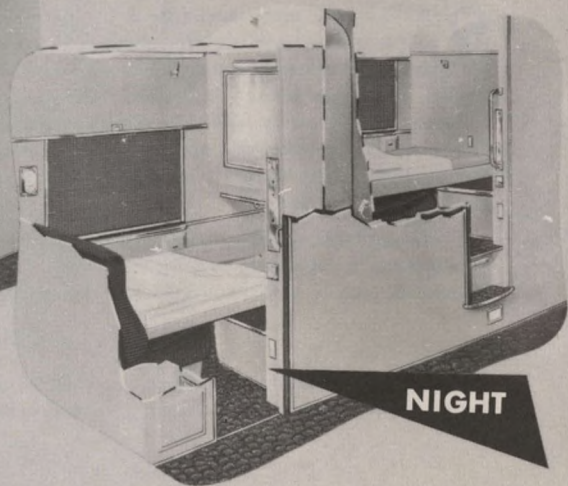
OUR "section" accommodation is inexpensive and flexible. You can obtain an upper berth or a lower, or have the whole section to yourself. In daytime, these quarters offer soft deep-sprung seats and wide scenic windows; at night, big comfortable beds with foam-rubber mattresses. There are mirrors, individual lights and ventilation, clothes hangers and luggage space. A handy folding safety ladder permanently attached to each upper berth makes it unnecessary to call the porter when you want to get up or down. Extra pillows, blankets and hat bag may be obtained by ringing the porter and if you want a table for cards or reading during the day he'll be glad to bring you one.

You get extra dressing room when you occupy a whole section because the upper berth is not "made down". You also have additional clothes hangers and greater luggage space at your disposal. Whichever type of accommodation you choose, the cost is low.

Example: From Toronto to Windsor, one way, an upper berth costs only \$3.20, a lower berth \$4.00. For \$5.60 one person can have the use of a whole section.



DAY



NIGHT

◀ DUPLEX ROOMETTE

HERE you get complete privacy at minimum cost. The duplex roomette offers enclosed space for single occupancy, with every modern convenience at your fingertips.

You have your own toilet and wash basin, large lighted mirror with outlet for an electric shaver, individually controlled heat and air-conditioning, mechanically cooled drinking water, ample luggage space, picture window and a sponge-rubber sofa seat—all arranged in a compact and attractive layout. At night, when you are ready to retire, you simply draw your bed out of the wall, or ring for the porter who will do it for you.

A duplex roomette costs only 10 per cent more than a lower berth.

Example: From Winnipeg to Vancouver, a distance of 1,571 miles, you can obtain one for \$14.10.







R O O M E T T E

THE new Canadian National roomette offers all the advantages of the duplex roomette plus extra spaciousness and added conveniences.

There's plenty of living room, and lots of storage space. You can relax in deep-cushioned comfort in the daytime and you'll enjoy a good night's sleep in a big bed with a foam-rubber mattress that stretches a full six feet two inches in length. A new type of counterbalance permits the bed to be folded in and out of the wall quite effortlessly.

Of particular interest to women is the modern china washstand which converts to a dressing table with a three-way mirror.

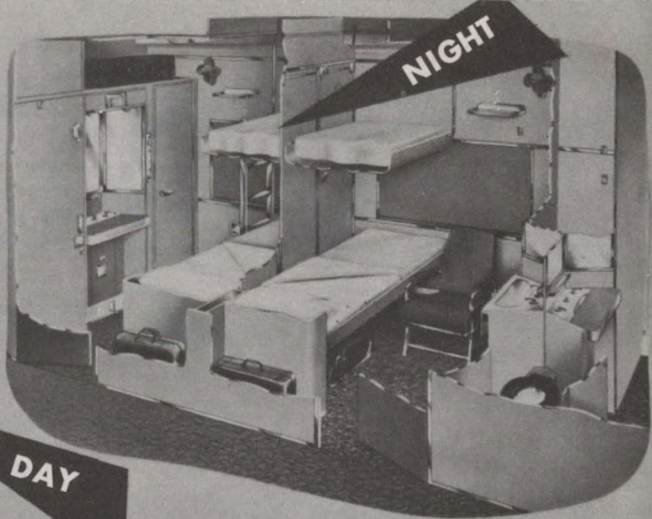
The cost is moderate.

Example: For the 335-mile trip between Montreal and Toronto, a roomette costs \$5.60.





DAY



NIGHT

◀ BEDROOM

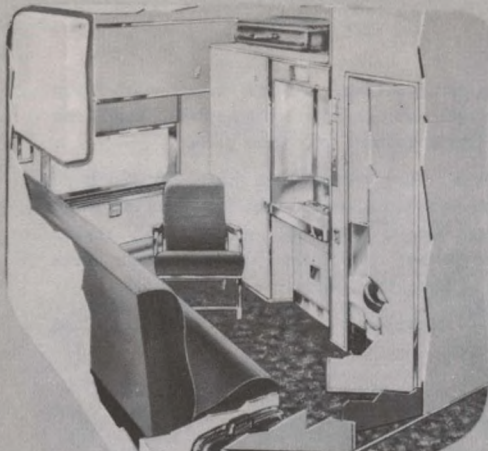
EACH of the CNR's attractive new bedrooms has an upper and a lower bed, a wash basin that converts to a stylish dressing table and a private toilet enclosed in an annex. Both beds disappear from sight during the day and two large folding armchairs take their place.

These bedrooms are arranged in pairs, divided by a sliding panel which may be folded back if desired to permit the use of two rooms as a single spacious suite, with double facilities including four beds. Each room has a wardrobe, mechanically cooled drinking water, foam-rubber mattresses, liberal luggage space and personal control of heat, light and air-conditioning.

This cosy kind of travel-living accommodation costs less than you might expect.



*Example: A bedroom for two from Winnipeg to Saskatoon—470 miles—is only \$9.15. For one person, the cost is reduced to \$8.10.**



DAY



NIGHT

◀ COMPARTMENT

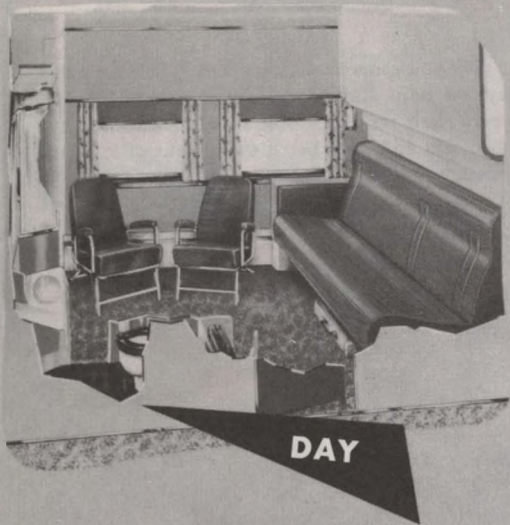
OUR new compartments are skilfully designed to give you generous living space. There's a full-length sofa on which to lounge (or have a daytime nap) and a large armchair which folds up and tucks away when it's not needed. The sofa and chair provide ample room to seat four by day. When it's time to retire, the sofa becomes a bed and an upper berth swings out of its wall recess above it. Both have deep foam-rubber mattresses.

The toilet is out of sight and completely private. A modern china wash basin is located in the room itself, and an ingenious arrangement converts it to a dressing table with three-way mirror and shadowless lighting.

A compartment is an ideal way for two people to travel.

Example of cost: From Halifax to Montreal, 840 miles, a compartment for two is \$19.50. The cost for one person is reduced to \$17.50.





◀ DRAWING ROOM

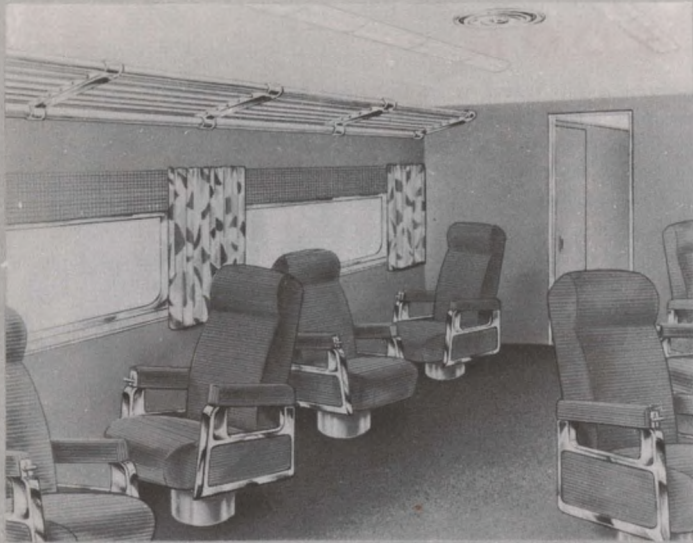
A Canadian National drawing room is rail travel at its luxurious best. It's tops in travel-living. There's sleeping space for a small family in two lower beds and one upper, all of which disappear from sight in the daytime. Seating arrangements include a full-length sofa and two movable lounge chairs which can be collapsed and put out of sight when desired.

Toilet and washing facilities are completely enclosed in a separate room. There is ample dressing space, and clothes can be hung full length in the large wardrobe locker. Each room has individual control of heat, light and air-conditioning. Side-panel heating—a new development—provides an even flow of warm air and keeps windows frost-free.

There isn't any finer way to travel.

Example of cost: For the 840-mile trip from Montreal to Halifax, a drawing room for two or more people costs \$24.00. For one person the cost is reduced to \$21.00.





◀ P A R L O R C A R

IF you want a separate chair of your own for a trip that takes place mainly during the daylight hours, you can reserve a seat on one of the Canadian National's new parlor cars. Each of these spacious, all steel cars has 34 soft, upholstered seats with swivel action and reclining backs.

You can face the scenery as it passes your wide clear window, or turn your chair in any direction you like—for reading or to face a companion. The porter will install a sturdy table for writing or games if you wish.

Roller bearings and special springing guarantee you a quiet comfortable ride all the way. Each car is mechanically air-conditioned and features fluorescent "strip" lighting extending its full length on both sides. Your eye comfort is enhanced by the attractive color scheme and the modern decor. Ample facilities are provided for light luggage and wraps.

The cost is quite modest.

Example: A parlor car seat from Montreal to Toronto, 335 miles, can be obtained for only \$2.10.



FRONT

REAR



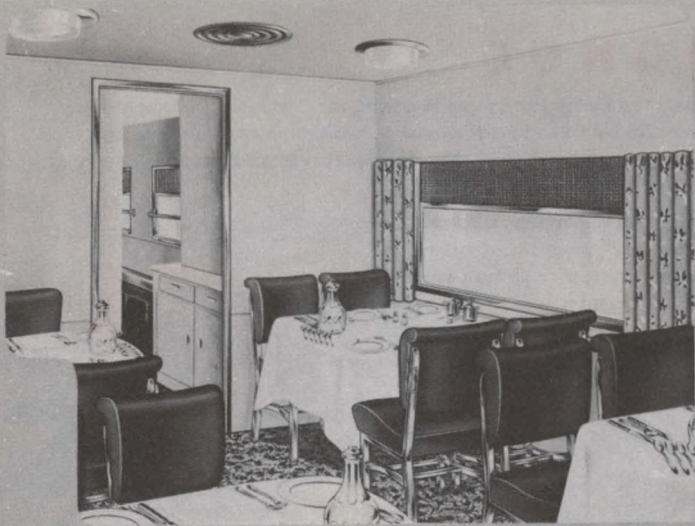
BUFFET LOUNGE

TRULY a private club on wheels, the buffet lounge car is one of the "extras" offered on many of our trains to help make your trip by Canadian National a memorable experience in travel-living. You automatically qualify for membership in this club whenever you occupy standard sleeping space, whether it's an upper berth or a drawing room.

There is an inviting atmosphere of sociability in these cars. Here you will find the latest books and magazines, tables for writing or games, comfortable lounge chairs, wide picture windows and glareless fluorescent lighting. The interiors are tastefully finished in harmonious tones of green, beige and copper, and the light colored desk, bookcase and table are styled to blend with the modern decor.

Buffet meals are served at two tables, each seating four people.







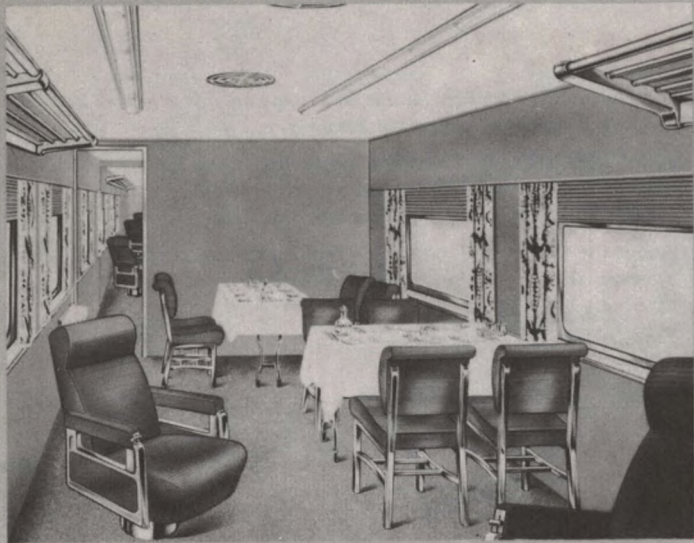
SLEEPER GRILL

THIS car cleverly combines sleeping and dining facilities in one handsome unit. It is generally used on light runs where the train does not include a separate dining car.

Sleeping accommodation consists of eight sections, each with upper and lower berths, and one bedroom. The dining section seats 16 people and is equipped to serve everything from a sandwich to a full-course meal, prepared in the car's own stainless-steel kitchen.

There's a homelike informality about the sleeper grill, and you'll find it extremely convenient for overnight trips—if you occupy space in the sleeping section you can enjoy breakfast in the morning, or dinner at night, without moving out of your own car.

The dining service can be used by coach passengers, too.





PARLOR GRILL

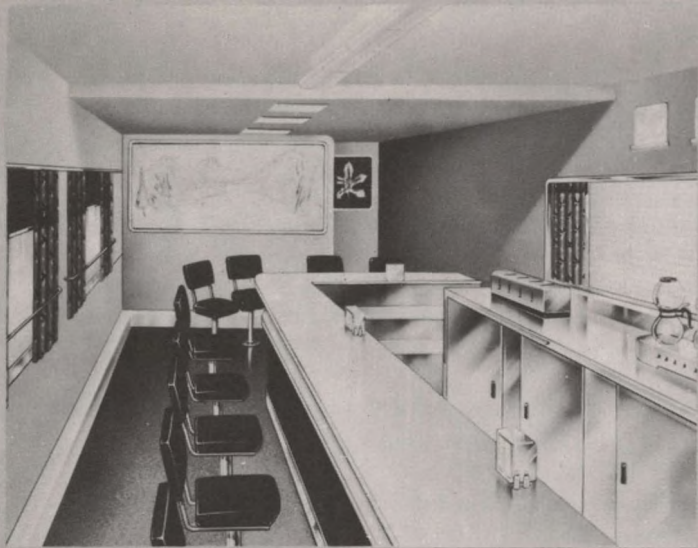
YOU'LL enjoy the friendly atmosphere of our new parlor grill car with its comfortable lounge chairs and fine restaurant facilities.

There are two types. One features a living room section with 20 chairs and a dining section seating 16 persons. The other, shown at left, has its parlor facilities divided in two parts, with seven chairs at one end of the car and 15 at the opposite end. In between is the dining section with seating capacity for eight, located adjacent to the buffet.

From the thick wall-to-wall carpet to the colorful furnishings, everything in the parlor grill car is designed for your comfort and convenience. Here you'll find space to move about, tasteful decorations, controlled air-conditioning, picture windows and glareless overhead fluorescent lighting.

You can reserve a chair in either type of parlor grill car at a very modest cost.

Example: A seat from Halifax to Sydney, Nova Scotia—a distance of 289 miles—costs only \$1.80.



◀ DINETTE

HERE is something entirely new in rail travel.

Designed for economy-minded travellers, the dinette car offers a wide range of good appetizing food at popular prices. The menu runs from light snacks to full-course meals, carefully prepared by expert chefs and promptly served at an attractive counter seating 26 people.

Chrome and red-leather stools, equipped with hat hooks, are spaced to give ample elbow room. Color harmony and modern design make these cars as appealing to the eye as the food is to the palate. The kitchen is outfitted with easy-to-clean stainless steel equipment; the serving section also has a stainless steel work table equipped with toasters, coffee makers, sandwich and salad section and soda fountain.

Air-conditioning, fluorescent lighting, electric refrigeration and a variety of other features are built into this car for your comfort and convenience.





D I N I N G C A R

THESE cars bring new standards of comfort and style to the Canadian National's dining car service, already famous for its fine food and gracious hospitality.

Every car is a luxurious restaurant on wheels, offering the cuisine and the elegance of a hotel dining room, plus a picture-window view of the everchanging panorama that passes by your table.

Designed to make mealtime one of the highlights of your trip, these new CNR dining cars move quietly and smoothly on roller-bearing wheels and all-coil springs. Their interiors are richly upholstered and tastefully finished in an artistic modern blending of mulberry, grey, red, tan and gold tones, complemented by the chrome trim of tables and chairs.

Each dining car seats 40 people in controlled air-conditioned comfort by wide windows. Behind the scenes, kitchen and pantry are outfitted in stainless steel, with electric refrigeration and a variety of modern appliances.

Some famous CNR NAME TRAINS

THE CONTINENTAL LIMITED —

Montreal • Toronto • Vancouver

THE INTERNATIONAL LIMITED — THE MAPLE LEAF — THE INTER CITY

Montreal • Toronto • Detroit • Chicago

THE OCEAN LIMITED — THE SCOTIAN — THE MARITIME EXPRESS

Montreal • Moncton • Halifax

THE WASHINGTONIAN — THE MONTREALER

Montreal • New York • Washington



CANADIAN NATIONAL RAILWAYS

PASSENGER AGENCIES IN CANADA AND UNITED STATES

Belleville, Ont.....	346 Front St.	Oshawa, Ont.....	3 King St. West
Boston (16), Mass.....	497 Boylston St.	Ottawa, Ont.....	Cor. Sparks and Metcalfe Sts.
Brantford, Ont.....	153 Colborne St.	Peterboro, Ont.....	324 George St.
Buffalo (2), N.Y.....	13 West Genesee	Philadelphia (7), Pa.....	Suite 1142, Lincoln Liberty Bldg. Broad and Chestnut Sts.
Calgary, Alta.....	212 Eighth Ave. West	Pittsburgh (22), Pa.....	505 Park Bldg., 355 Fifth Ave.
Charlottetown, P.E.I.....	C.N. Rys. Station	Portland (3), Me.....	G.T. Railway Station
Chatham, Ont.....	51 King St. West	Prince Rupert, B.C.....	528 Third Ave. West
Chicago (3), Ill.....	103 West Adams St.	Quebec, Que.....	10 Ste. Anne St.
Cincinnati (2), Ohio.....	206 Dixie Terminal Bldg.	Regina, Sask.....	Union Station
Detroit (26), Mich.....	1239 Washington Blvd.	St. Catharines, Ont.....	13 Queen St.
Edmonton, Alta.....	Cor. Jasper Ave. and 100th St.	Saint John, N.B.....	49 King St.
Flint (3), Mich.....	1639 Mott Foundation Bldg.	St. John's, Nfld.....	C.N. Rys. Station
Guelph, Ont.....	67 Wyndham St.	St. Louis (2), Mo.....	314 North Broadway
Halifax, N.S.....	505-507 Barrington St.	San Francisco (8), Cal.....	502 Shreve Bldg., 210 Post St.
Hamilton, Ont.....	7 James St. North	Saskatoon, Sask.....	C.N. Rys. Station
Kansas City (6), Mo.....	101 West Eleventh St.	Seattle (1), Wash.....	214 Vance Bldg. Third Ave. and Union St.
Kingston, Ont.....	115 Princess St.	Sherbrooke, Que.....	50 Depot St.
Kitchener, Ont.....	19 King St. West	Sudbury, Ont.....	41 Durham St. South
London, Ont.....	430 Richmond St.	Toronto (1), Ont.....	6 King St. W.
Los Angeles (14), Cal.....	607 S. Grand Ave.	Vancouver, B.C.....	527 Granville St.
Milwaukee (3), Wis.....	Rm. 502, 231 W. Wisconsin Ave.	Victoria, B.C.....	Cor. Gov't. and Fort Sts.
Minneapolis (2), Minn.....	1040 Rand Tower, 527 Marquette Ave.	Washington (5), D.C.....	922-15th Street N.W.
Moncton, N.B.....	C.N. Rys. Station	Windsor, Ont.....	364 Ouellette Ave. (Canada Bldg.)
Montreal (1), Que.....	384 St. James St. W.	Winnipeg, Man.....	Cor. Main St. and Portage Ave.
New York (20), N.Y.....	Rockefeller Center, 630 Fifth Ave	Woodstock, Ont.....	414 Dundas St.
North Bay, Ont.....	203 Main St. West		

