

NEWFOUNDLAND

PRINCE
EDWARD
ISLAND

NEW
BRUNSWICK



CANADIAN
NATIONAL
RAILWAYS

NOVA SCOTIA

Introducing

CANADA'S

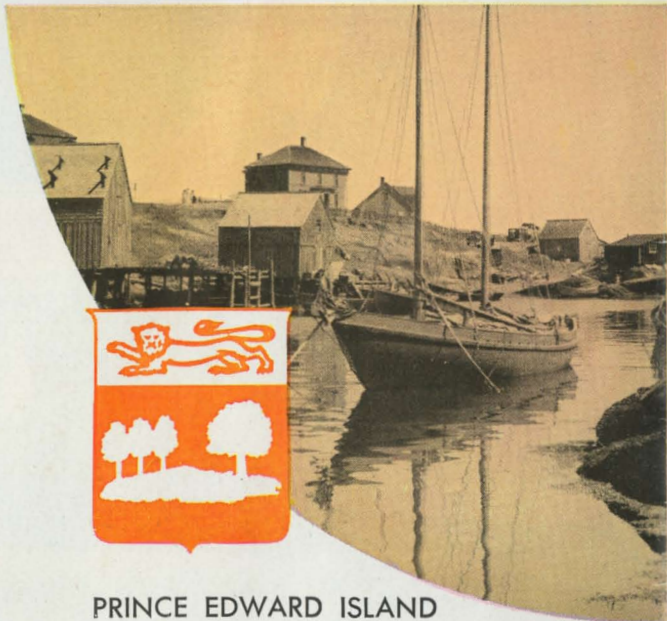
Canada's four Maritime Provinces—New Brunswick, Nova Scotia, Prince Edward Island and Newfoundland—could be snugly tucked into any one of several other provinces and there would be plenty of space left over. But size isn't everything and even the smallest of these provinces has what it takes to make the kind of vacation you remember and talk about.

Taken together or separately, the four are a rich texture of sea and land, of past and present. They all belong to the Atlantic Ocean. Two of them are islands, one of them dangles from the mainland by a thread and the fourth, almost a square in shape, fronts the sea on two sides and a large part of another. They share the Atlantic and they share the first days of Canada's romantic history. The Norsemen of nearly a thousand years ago knew their shores. John Cabot discovered Newfoundland in 1497 and touched on Nova Scotia. In 1534 Jacques Cartier sailed through the Strait of Belle Isle and into the Gulf of St. Lawrence and the Bay of Chaleur. The French established Acadia in what is now Nova Scotia and New Brunswick in 1603 and if Cabot or Cartier did not visit Prince Edward Island certainly Champlain did, in the first years of the 17th Century, before he founded the City of Quebec.

Canada was French for more than two centuries and mementoes of the ancient regime may still be found in the Maritimes. What's left of the stronghold of Louisbourg on Cape Breton Island, 25 miles from Sydney, is preserved as an historic park and museum; so is Fort Anne at Annapolis Royal and, at Port Royal, eight miles away, Champlain's habitation of 1605 has been restored on the original site. These



NEW BRUNSWICK



PRINCE EDWARD ISLAND

PROVINCES BY THE SEA



NOVA SCOTIA



NEWFOUNDLAND

are all in Nova Scotia. New Brunswick has Fort Beauséjour, near Sackville. Monuments like these are not, however, the only evidence of New France. In some places the French language and folk traditions are still carried on.

To these have been added the ample history and character of British North America. The first English settlement, apart from the military posts, was at Halifax, N.S., established in 1749. A younger community, Saint John, N.B., was the first city incorporated in Canada—1785. Halifax and Saint John are great seaports. Worthy of visit, too, are Fredericton, capital of New Brunswick, and Moncton, headquarters of the Canadian National Railways' Atlantic Region; Charlottetown, capital of Prince Edward Island; St. John's, capital of Newfoundland, and other centres of industry, culture and recreation.

There are three national parks in the Atlantic Provinces—Cape Breton Highlands, with its 400 square miles of rugged coast and mountains, its thrilling views of the sea, Prince Edward Island, 25 miles of beaches along the north shore, and Fundy, an 80-square-miles wildlife sanctuary in the forest between Saint John and Moncton.

This enchanting vacation land is easily reached from anywhere in North America by the Canadian National System. Ask your agent to help you plan your trip. He will tell you, too, about the splendid C.N.R. hotels—The Nova Scotian, in Halifax, The Charlottetown on Prince Edward Island, Pictou Lodge, the summer resort on Northumberland Strait, and the Newfoundland, in St. John's.

New Brunswick

LAND OF HISTORY AND ROMANCE

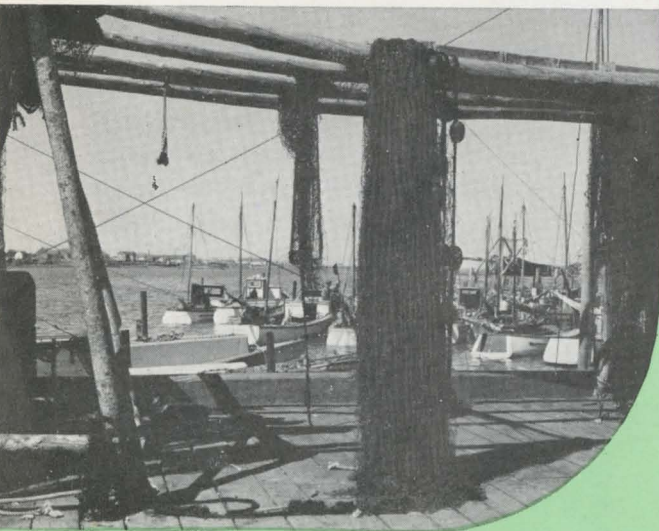


The province of New Brunswick is ideally situated for summer pleasure. North, south and east, the province—about the size of Scotland—fronts the ocean and along its varied shores are to be found popular resorts with all the diversions you expect at the seaside. Inland from the beaches and the rocky coves, with their serene waters and their tumbling surf, roll the hillsides and the meadows of prosperous farmlands and beyond them stand the great forests, opening up in the lovely valleys of the Saint John

River—a celebrated highway in the days of New France—and the Mata-pedia, the Restigouche and the Miramichi. Here and in countless other streams and pools you may fish for salmon and trout. There's good hunting, too, plentiful deer, bear, partridge, woodcock, ducks, geese and rabbits.

You should not miss such phenomena as the Hopewell Rocks, the Magnetic Hill, and Fundy's tidal bore sweeping up the Petitcodiac. Visit the cities of the present and give a thought to the romance of the past. Go back three centuries to the time when Boston, a cluster of log cabins, was tangled up in the feud between two French chevaliers fighting for the lordship of Acadia and Francoise Marie de la Tour heroically held her husband's fort against a ruthless enemy.

From the north shore, looking across the Bay of Chaleur to Gaspé, to the south, looking across Fundy and Chignecto to Nova Scotia, and from the Maine boundary to Northumberland Strait and the Gulf, New Brunswick's hospitable doors are open and her table spread with good things.



Net, wharves, fishing craft and pleasure craft are trademarks of New Brunswick's many popular seaside resorts.



A proud fisherman exhibits an excellent trophy taken from the Restigouche River near Campbellton.



The Atlantic coastline of New Brunswick is 600 miles long and this beach at Point du Chene is very popular.

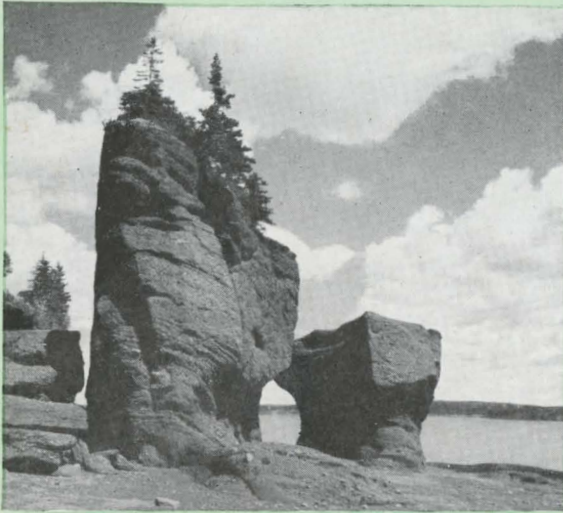
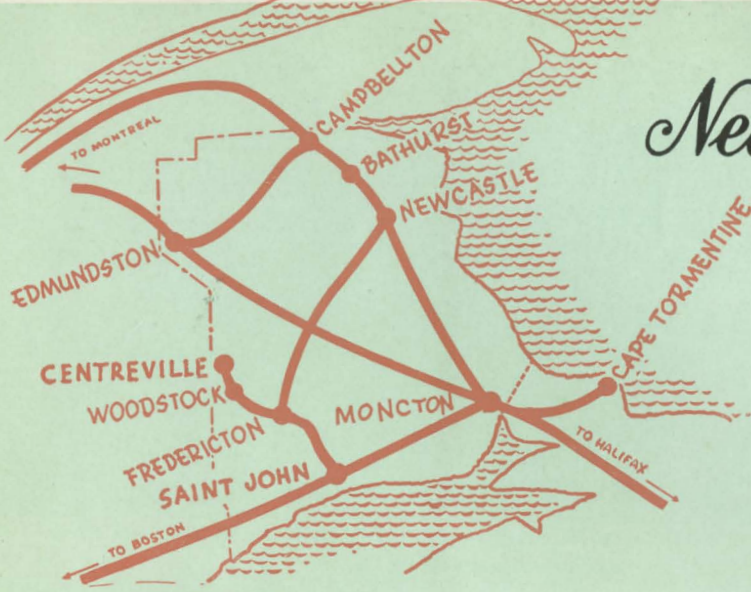


Near Moncton is this exciting optical illusion of nature which makes vehicles seem to move uphill when actually they are going down.

CANADIAN NATIONAL RAILWAYS
Will take you there



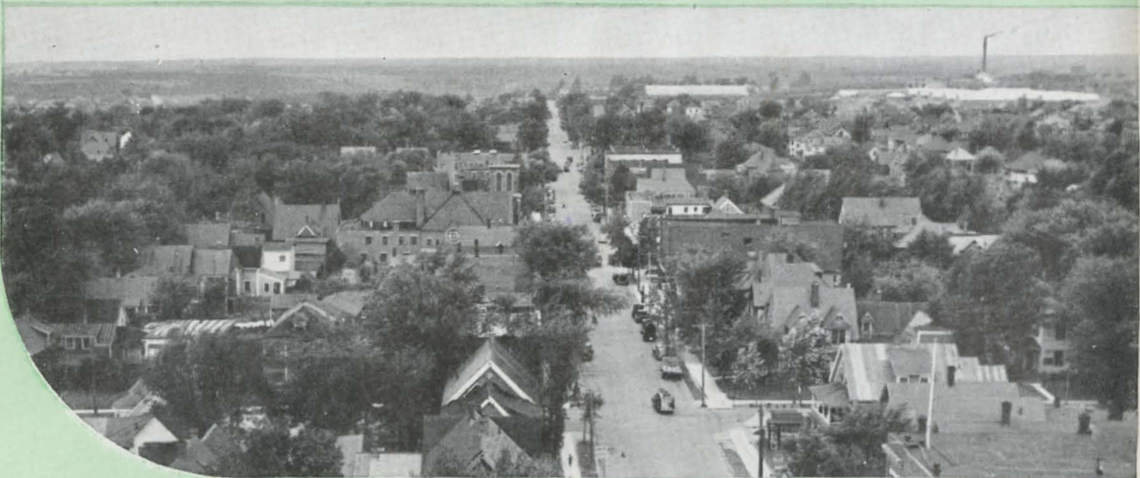
New Brunswick



Erosion has created some strange carving among the Hopewell Rocks, a few miles from Moncton.



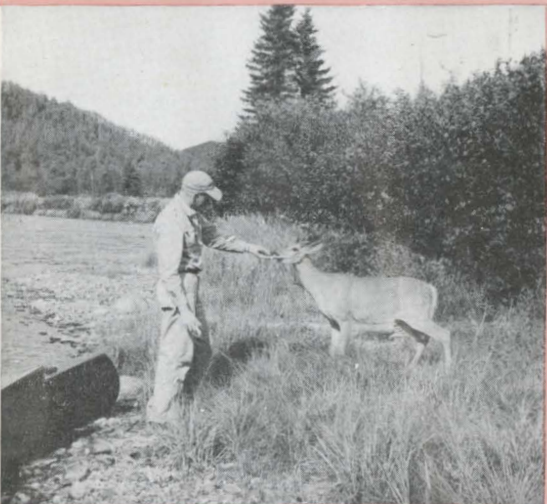
Saint John is a splendid city in its own right and is one of Canada's important year-round seaports.



Moncton, railway hub of New Brunswick, is a tidy city of neat homes and kindly people.



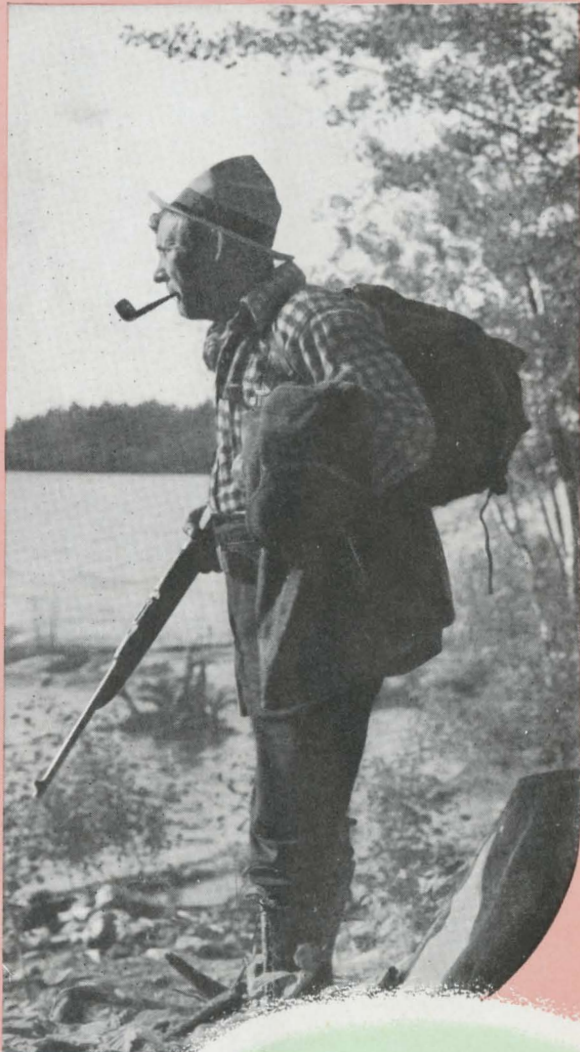
This Bore on the Peticodiac River is a natural phenomenon occurring twice daily and is one of Moncton's tourist attractions.



Much of New Brunswick is forested and wild game is plentiful. The camera is a useful item of vacation equipment.



New Brunswick is an area rich in mixed farming and pastoral charm.

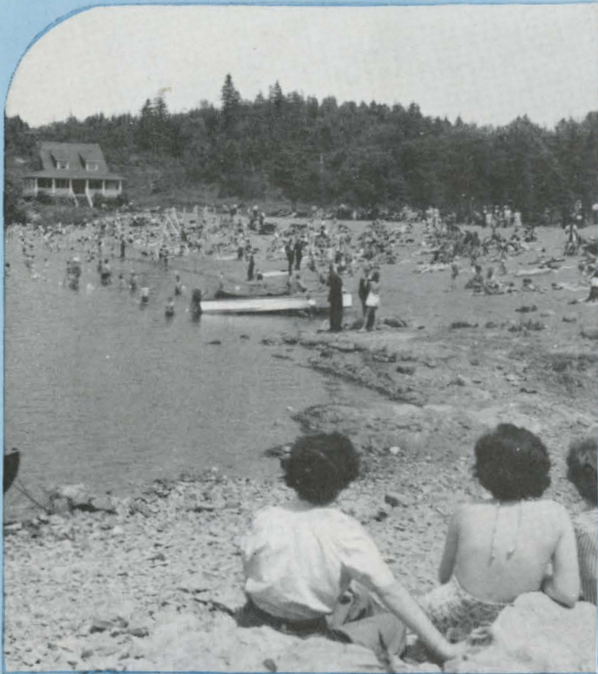


Hunters for game and birds find New Brunswick a profitable province to visit.

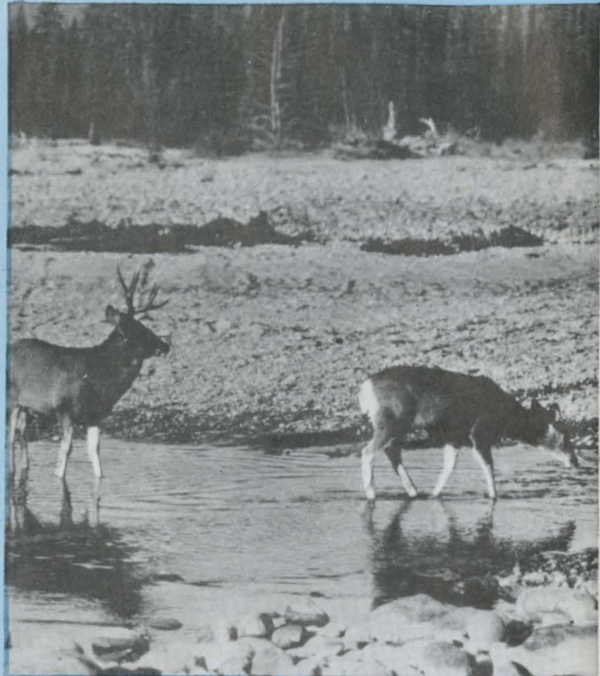
CANADIAN NATIONAL RAILWAYS
Will take you there



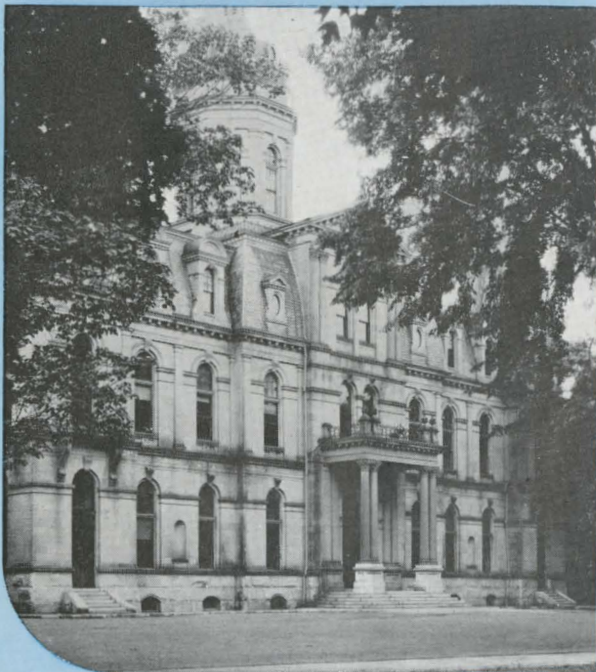
New Brunswick



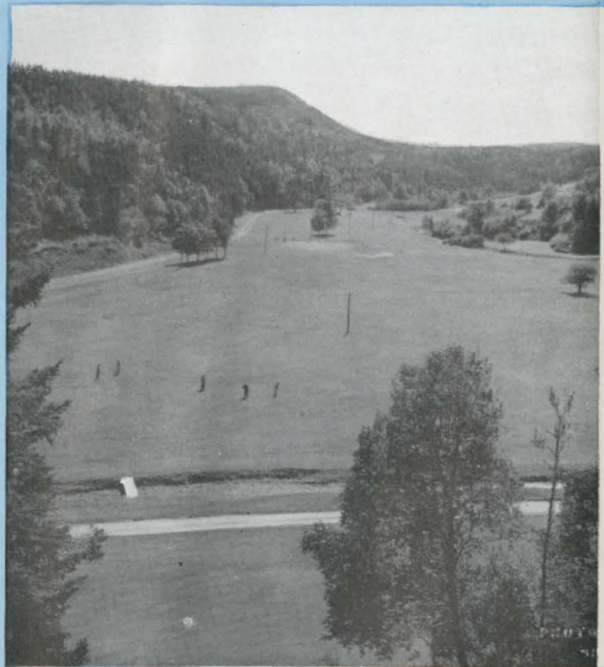
Almost anywhere along New Brunswick's coastline you'll come upon a bathing beach like this one near Saint John.



Salmon and trout in the streams; deer, bear and other game in the forests — that's the story everywhere of New Brunswick's extensive woodland.



There is a stateliness and charm about Fredericton — New Brunswick's capital — that is hard to match elsewhere in Canada.



One of the attractions of Fundy National Park is a sporting golf course.

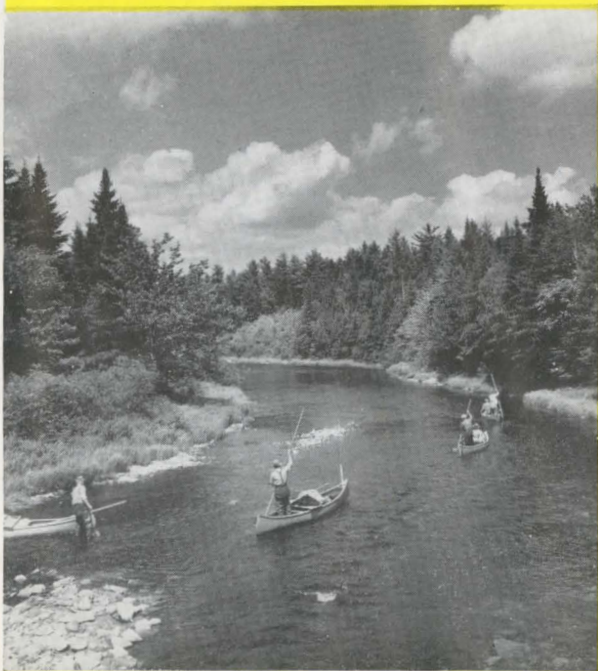


Enjoying a sun-bath
on one of New Brunswick's many beaches.



↑ A full grown black bear is a hunting trophy;
but we don't recommend this kind of intimacy.

You'll enjoy your New Brunswick vacation more ↓
if you go the Canadian National way.



The salmon streams of New Brunswick, the
Restigouche, Miramichi, Tobique and others,
are world-renowned.



CANADIAN NATIONAL RAILWAYS
Will take you there



NOVA SCOTIA

WHERE SEA AND FOREST MEET



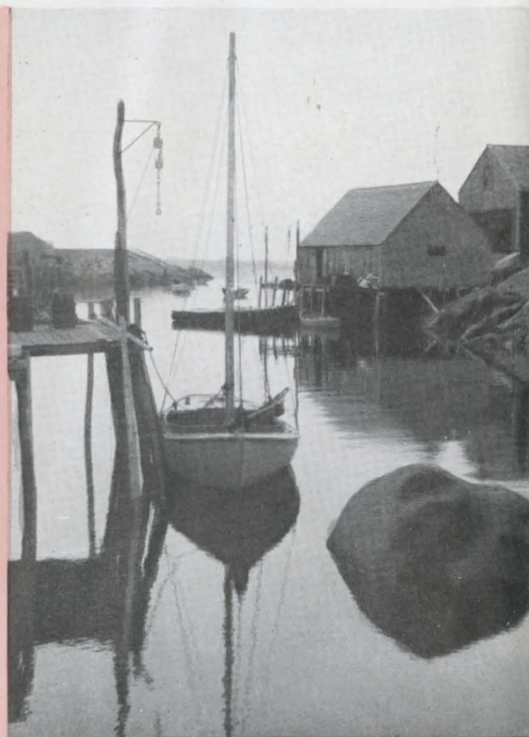
Maybe Leif Ericsson landed in Nova Scotia and maybe he didn't. Maybe Vinland was somewhere else. The Vikings sailed along Canada's eastern shores nearly a thousand years ago but they left no souvenirs and it isn't likely we'll ever be able to settle just where they touched land. It doesn't matter much, one way or the other. More to the point is your own discovery of Nova Scotia. It's a wonderful country to discover, and to explore, again and again, once you have found it.

If historical associations give a fillip to your vacation fun, you'll find plenty in this province spreading out in the Atlantic. It was New France before it was New Scotland and French is still spoken here as well as English and the Gaelic of the Highlands. Ancient traditions survive to enhance its charm for the visitor.

Nova Scotia is a rich diversity of landscape and seascape. Modern cities and towns are contrasted with picturesque fishing villages, rugged rocky shores with mellow farmlands—the first apples in the New World were grown in the famous Annapolis Valley—mines and steel mills are contrasted with playgrounds like the

Cape Breton Highlands and the Bras d'Or Lakes.

You can bask on the beaches, swim in the surf, play golf and tennis, fish for salmon and trout in streams like the Mersey, the Medway and the Margaree, or have the thrill of going after tuna, pollock and swordfish in the deep salt waters. Whatever you want for a vacation, come to Nova Scotia and you'll come again.



Quiet inlets like Peggy's Cove along Nova Scotia's south shore are a never-ending delight.



Salt is in the blood of Nova Scotians. They are great sailors and at popular summer resorts like Chester, sailing is a favorite sport.



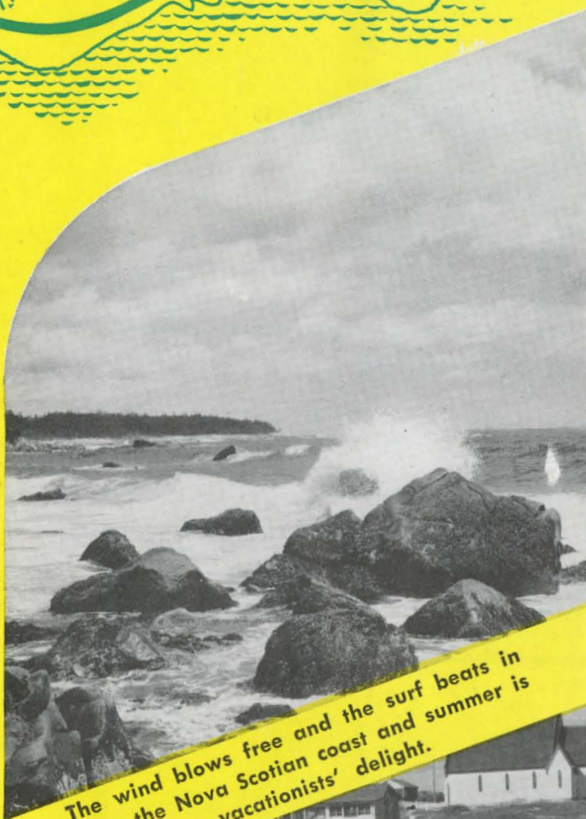
One of Canada's distinguished hotels, the Nova Scotian, is located in Halifax. A few steps away is the great pier where ships linking Canada to the world arrive and depart. Adjoining the Hotel is the Canadian National station—eastern terminus of a railway spanning the continent.

CANADIAN NATIONAL RAILWAYS

Will take you there



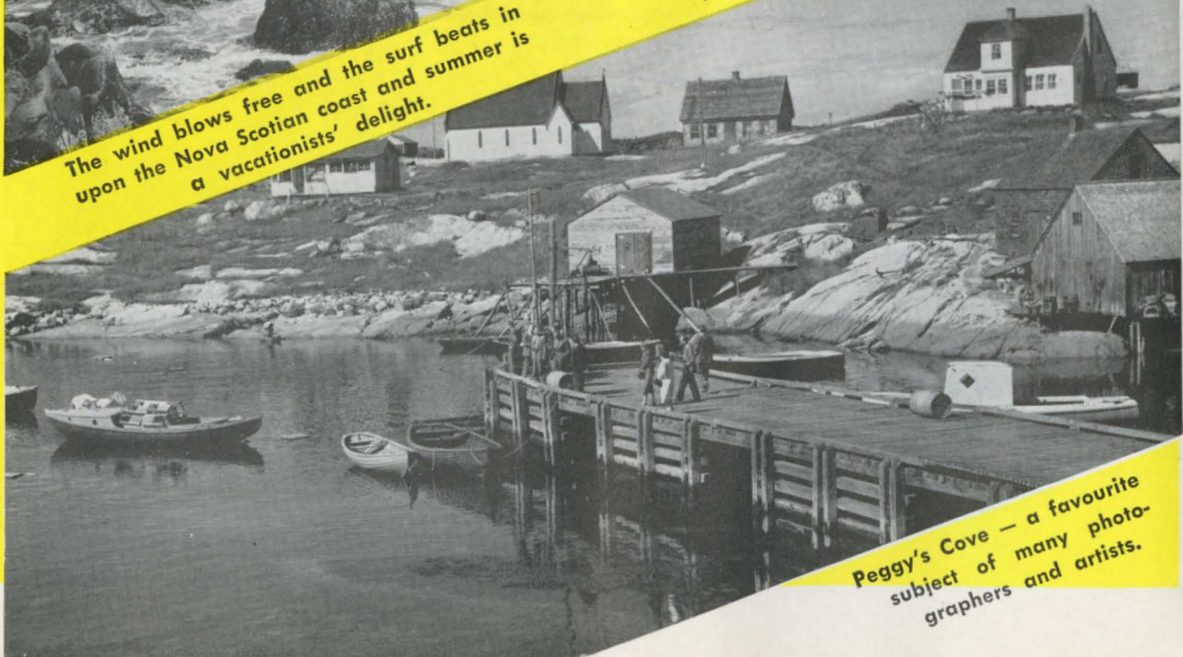
NOVA SCOTIA



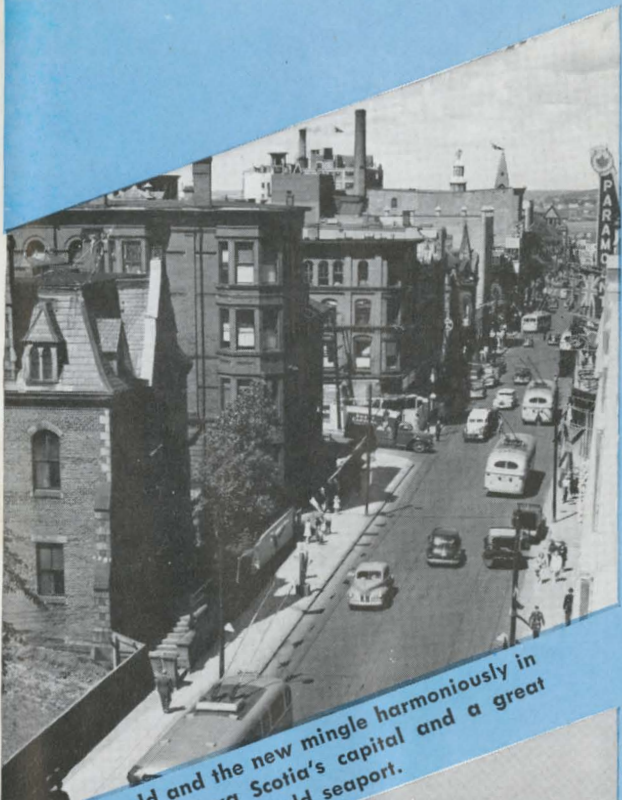
The wind blows free and the surf beats in upon the Nova Scotian coast and summer is a vacationists' delight.



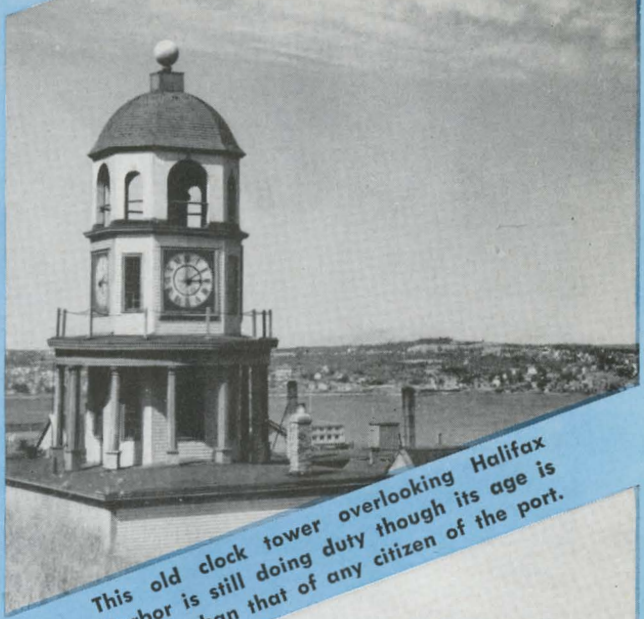
Nova Scotia means New Scotland, and Scottish customs are in especial evidence when the Highland Games take place at Antigonish.



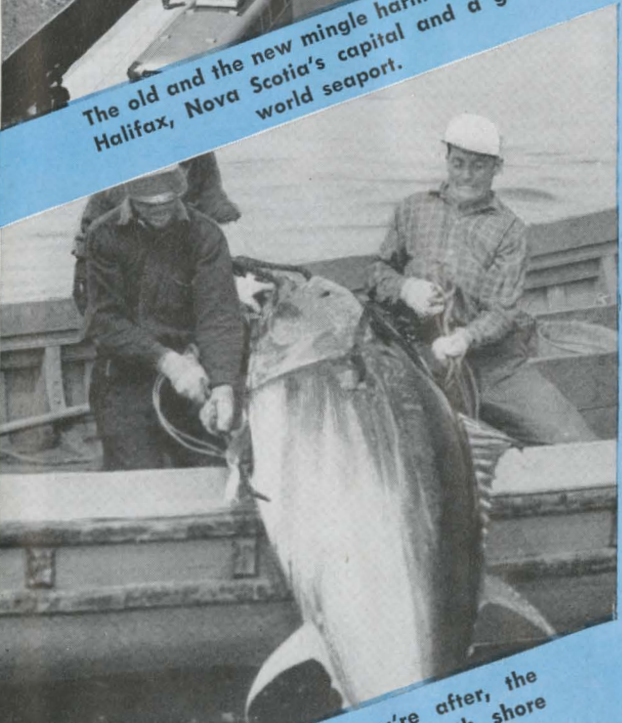
Peggy's Cove — a favourite subject of many photographers and artists.



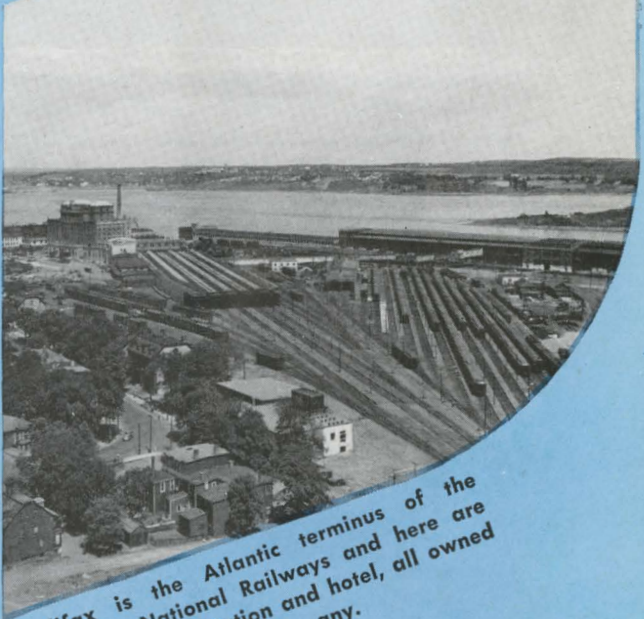
The old and the new mingle harmoniously in Halifax, Nova Scotia's capital and a great world seaport.



This old clock tower overlooking Halifax Harbor is still doing duty though its age is greater than that of any citizen of the port.



If it's big game fishing you're after, the giant tuna off Nova Scotia's south shore will provide it.

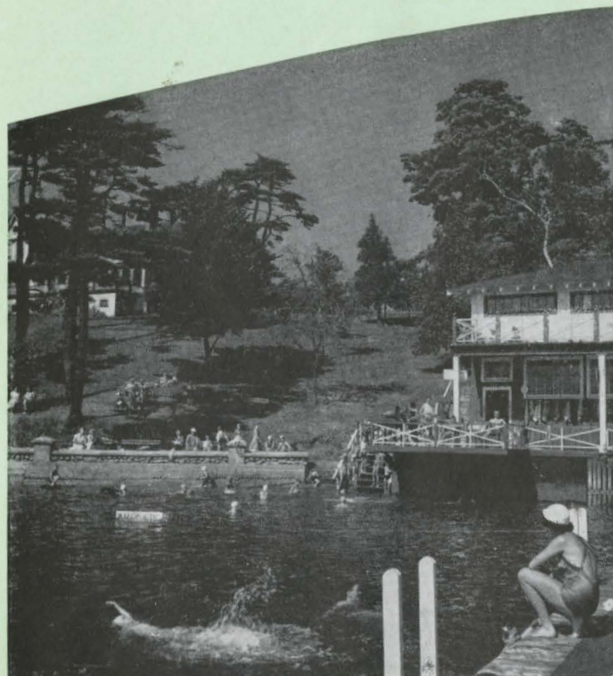


Halifax is the Atlantic terminus of the Canadian National Railways and here are seen the yards, station and hotel, all owned by the company.

CANADIAN NATIONAL RAILWAYS
Will take you there



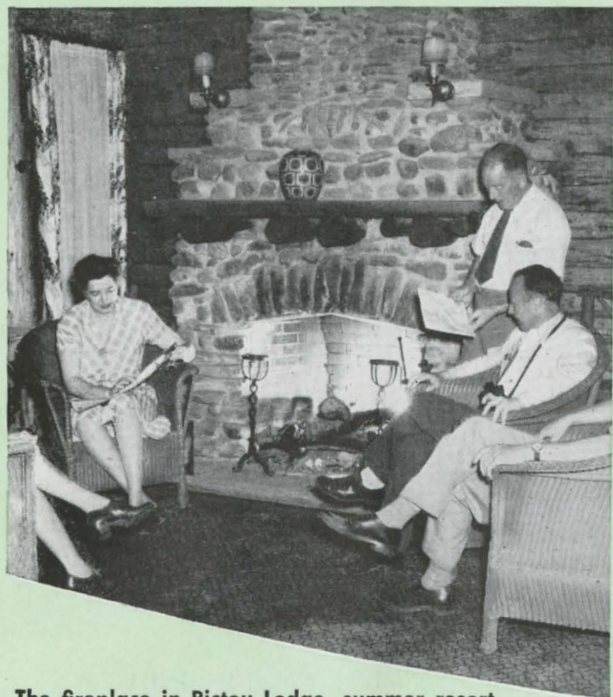
NOVA SCOTIA



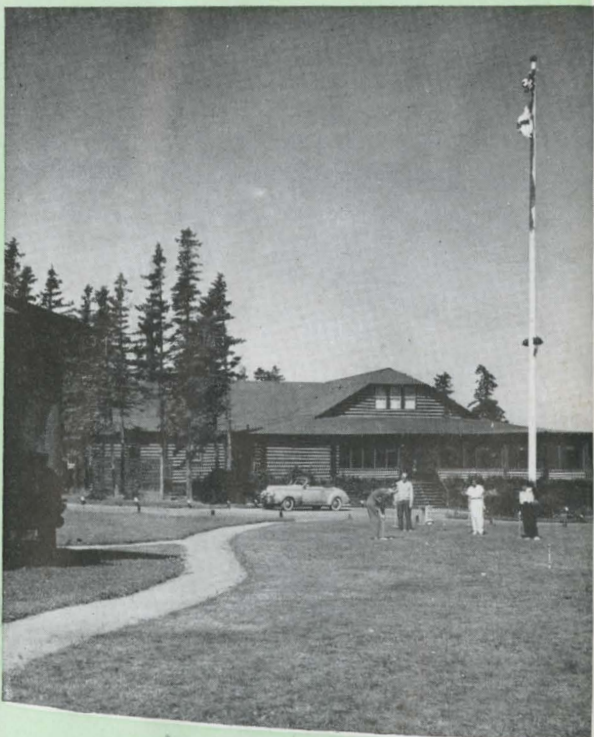
The North-West Arm provides Halifax with one of the most unique and complete salt water playgrounds on the Atlantic Coast.



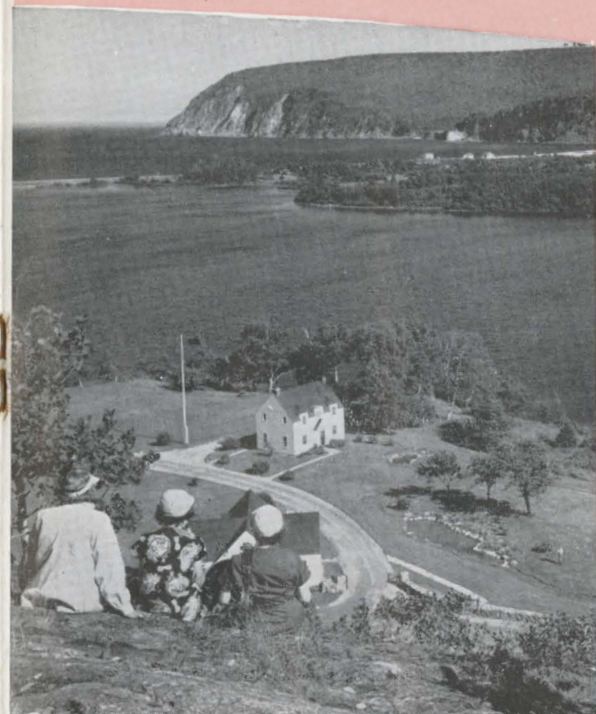
Nova Scotia yachting is really fun!



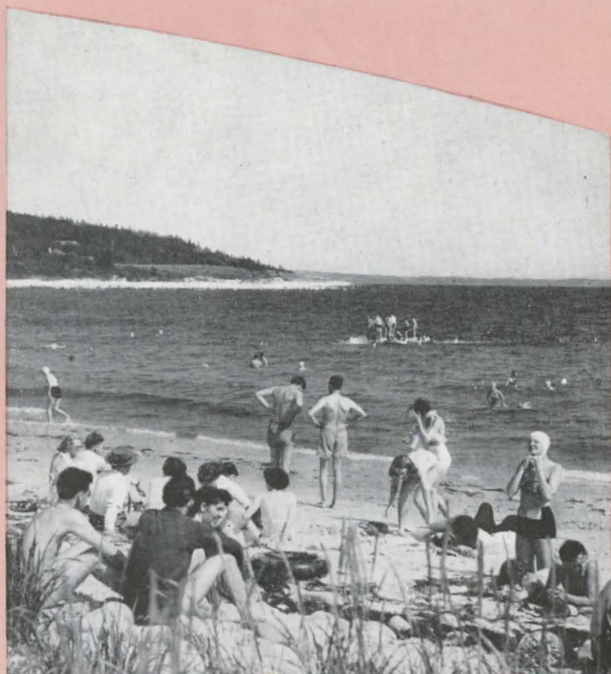
The fireplace in Pictou Lodge, summer resort of the Canadian National at Pictou, Nova Scotia, is a popular rendezvous.



An exterior view of attractive Pictou Lodge.

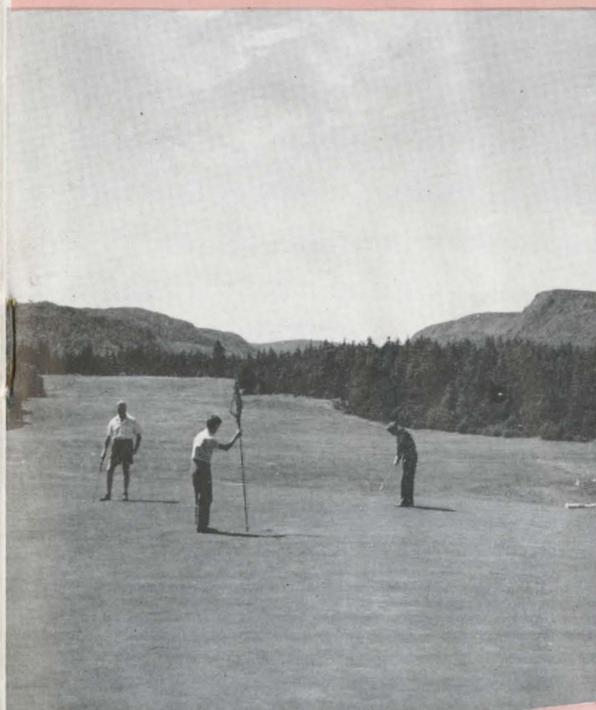


The entrance to picturesque Cape Breton Highlands National Park.

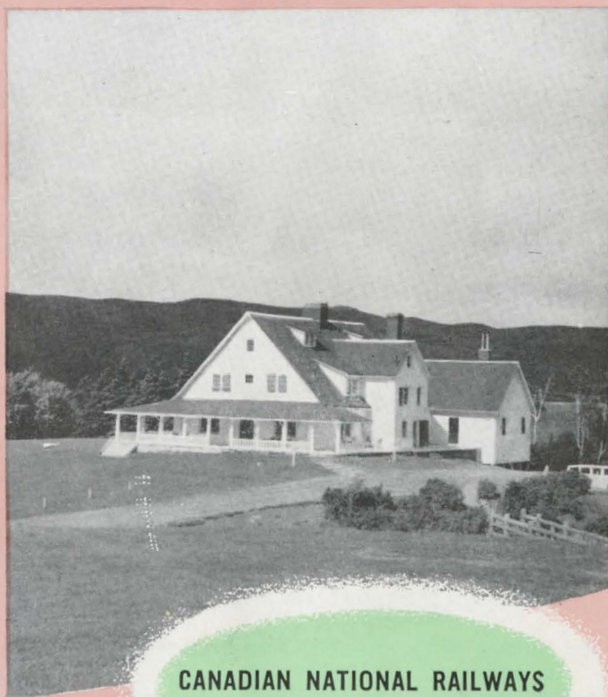


↑ One of Nova Scotia's many popular bathing strands is Hubbard's Beach.

Keltic Lodge is tourist Headquarters in Cape Breton National Park. ↓



In Cape Breton National Park, north of Sydney, Nova Scotia, the Canadian Government maintains an attractive 18-hole golf course.



CANADIAN NATIONAL RAILWAYS
Will take you there



PRINCE EDWARD ISLAND

"THE GARDEN OF THE GULF"



In its day Prince Edward Island has been called by other names — Abegweit to the Micmac Indians, Ile St. Jean to the French; but call it what you will, it will always be a delight, a place of beauty and a place of peace. Those who are born there speak of it as *The Island*, as if there were no other and when you have seen it you may agree with them.

Three times *The Island* comes within an ace of being separated by deep indentations of the sea penetrating from the north and south. But it has escaped this fate and remains not only an island in itself but a province as well—the smallest of the ten. Its greatest length is 145 miles; its greatest breadth is 34 which proves that fine things can be tied up in small packages.

Prince Edward Island *is* a land of fine things. Color helps to make it so. The blue sea; the green fields and the red soil produce a painted harmony that arrests the eye and rests the mind. Its people are tidy; the things they do and the homes they live in are tidy, too. The soil is rich in its

harvests of vegetables and fruits; the sea gives up an abundance of food, notably lobsters and the famous Malpeque oysters. Fine sandy beaches, excellent golf, sea trout fishing in rippling streams are among its attractions. History is as much a part of its mellow traditions as are its ancient buildings. A visit to Prince Edward Island is an experience you will cherish always.

You reach it by car ferry, which crosses the Strait of Northumberland on regularly scheduled runs between Cape Tormentine, N.B. and Borden in less than an hour. Canadian National rail lines traverse *The Island* from end to end. There are many comfortable inns and boarding houses throughout Prince Edward Island and in the charming capital city the Canadian National hotel, The Charlottetown, will give you gracious hospitality and up-to-date service.



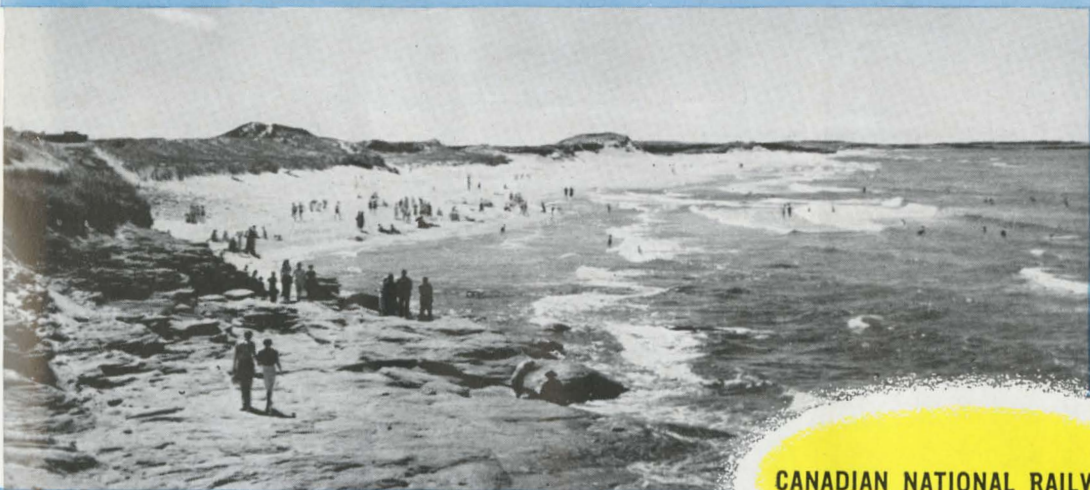
A spanking breeze and a sunny sea spell fun on Brackley Bay.



The serene pastoral country of the Island is soothing to the spirit.



A fishing schooner at Minimagash, on the southwest coast.

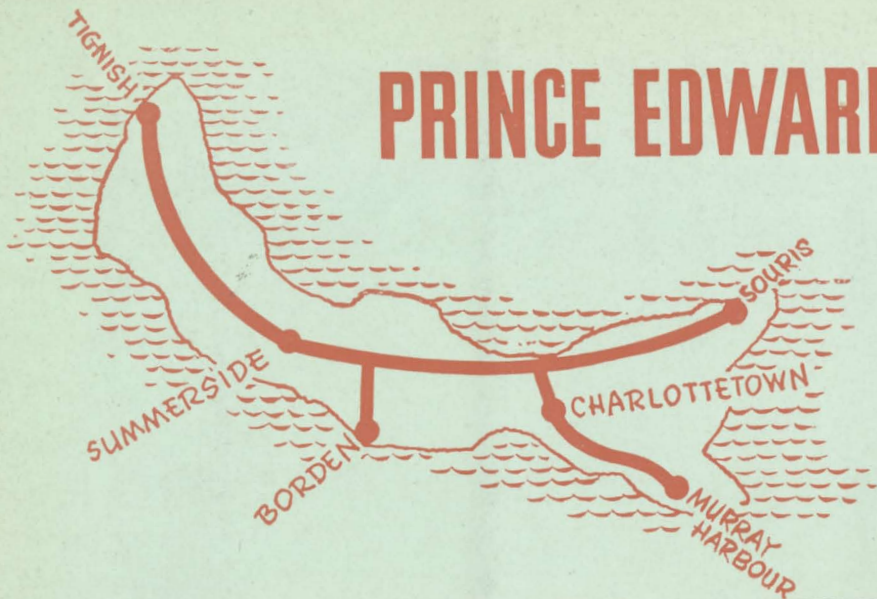


Here's Cavendish, one of the famous beaches, where there's room for thousands of surf-dippers and sun-baskers.

CANADIAN NATIONAL RAILWAYS
Will take you there



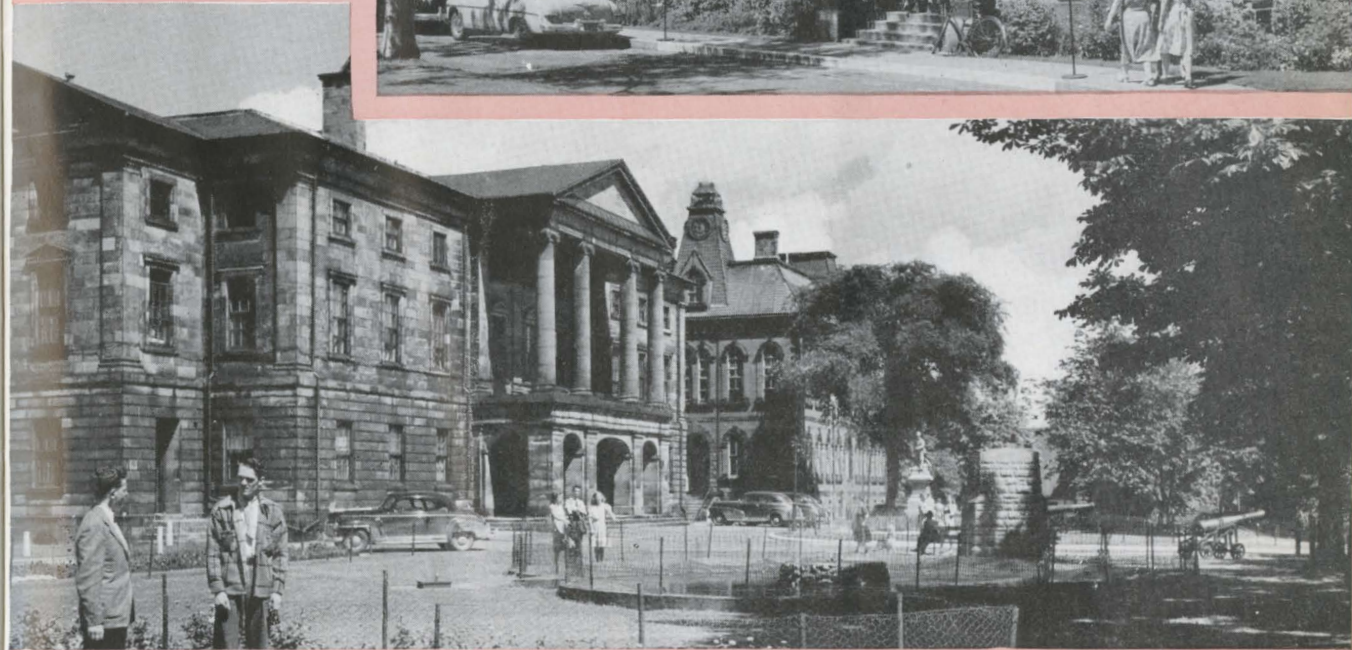
PRINCE EDWARD ISLAND



History was made here. In this chamber was held the Charlottetown Conference of 1864, one of the first steps toward the Confederation of Canada.

The Charlottetown, the Canadian National's hotel in the capital, offers gracious hospitality.

The seat of government in the province, with the law courts in the background.

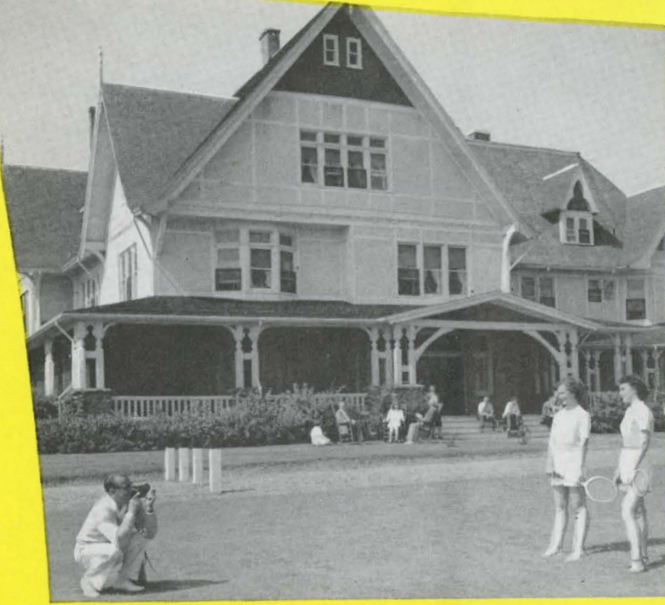


The powerful and commodious car ferry "Abegweit", operated by the Canadian National, connects Prince Edward Island with the mainland.

CANADIAN NATIONAL RAILWAYS
Will take you there



PRINCE EDWARD ISLAND



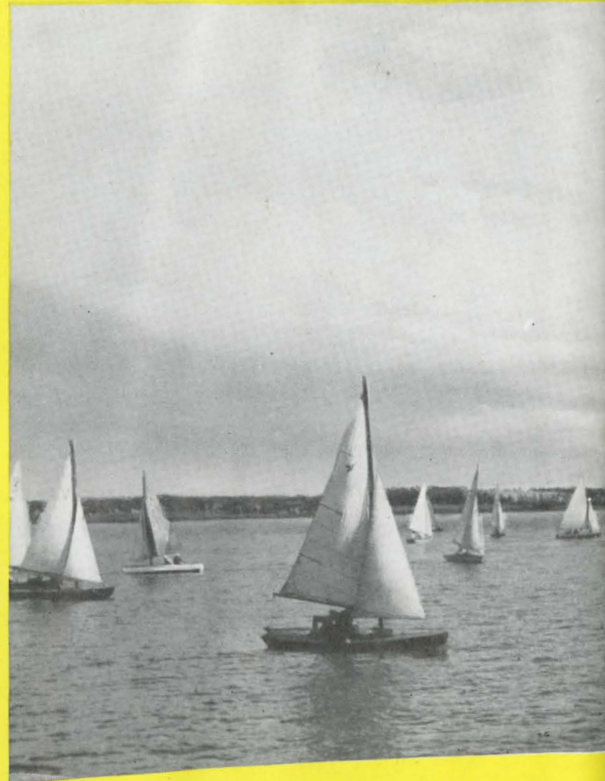
Wouldn't you like to stay at a place like this? It is typical of the Island's accommodation for visitors.



You're never far from the sea. Come on in, the water's fine!



Doesn't the Charlottetown golf course look inviting?



And here's more sailing. Even to look at the graceful triangles gives you a lift.



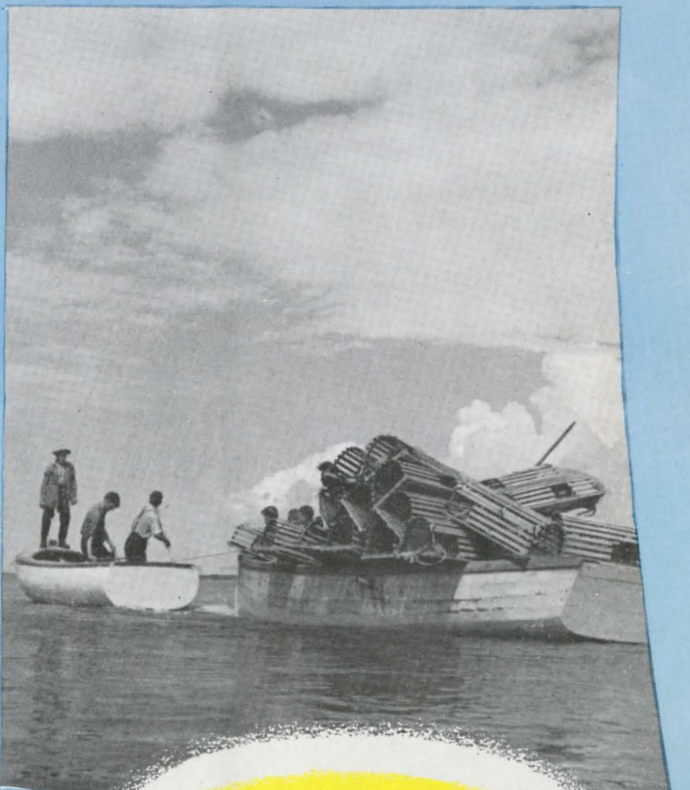
The packing of chicken haddies is one of Prince Edward Island's industries.



More fruit of the sea — "Irish Moss", valued for its medicinal properties.



A catch of lobsters comes ashore at Minimagash.



Setting out lobster traps along the Island Coast.

CANADIAN NATIONAL RAILWAYS
Will take you there



Newfoundland

THE OLD COLONY



For a different kind of vacation you couldn't do better than visit Newfoundland, Britain's oldest colony and Canada's newest province. This big triangular island, riding in the Atlantic and reaching farther east than any other place in North America, is a domain of spectacular scenery. Here you have impressive mountains and flat plains and barrens, deep forests broken by great rivers and thousands of lakes, and, all around, fretting with bays and coves every mile of coastline, the blue ocean.

A night's crossing of Cabot Strait in a comfortable steamer takes you from North Sydney, N.S. to Port aux Basques and you are in a new world. As you travel by rail across the island to St. John's, the ancient capital snug above its magnificent harbour, you pass through the pulp mill towns of

Corner Brook and Grand Falls and the great airport at Gander. From St. John's you may motor all over the Avalon Peninsula, to fascinating fishing villages, the utmost in the picturesque, and to the modern United States military bases. Reserve a place in one of the Canadian National steamers and sail into Notre Dame Bay or farther north to Labrador. You will come to intimate terms with the land of the cod and the seal. Threading your way through narrow "tickles" between rugged islands, calling at scores of "outports", you will enjoy scenery you will never forget and you will glimpse the life of a hardy, hospitable and friendly people who have preserved their individuality for hundreds of years. Tourist accommodation in Newfoundland is limited and you should make sure in advance of a place to stay.

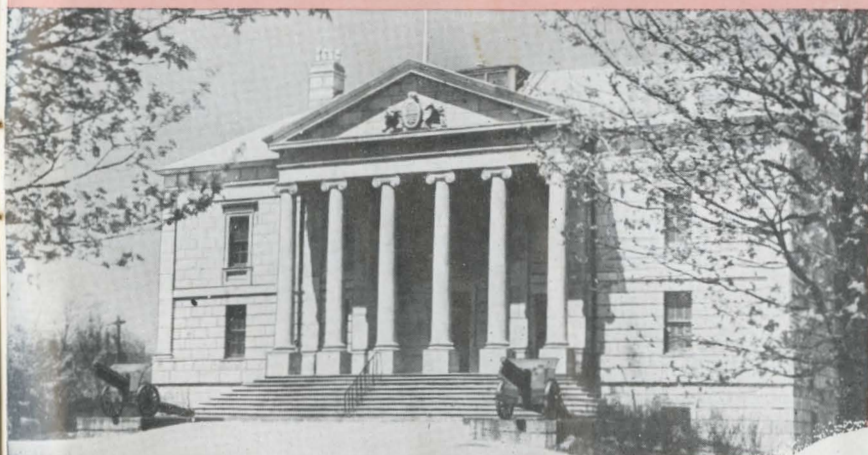
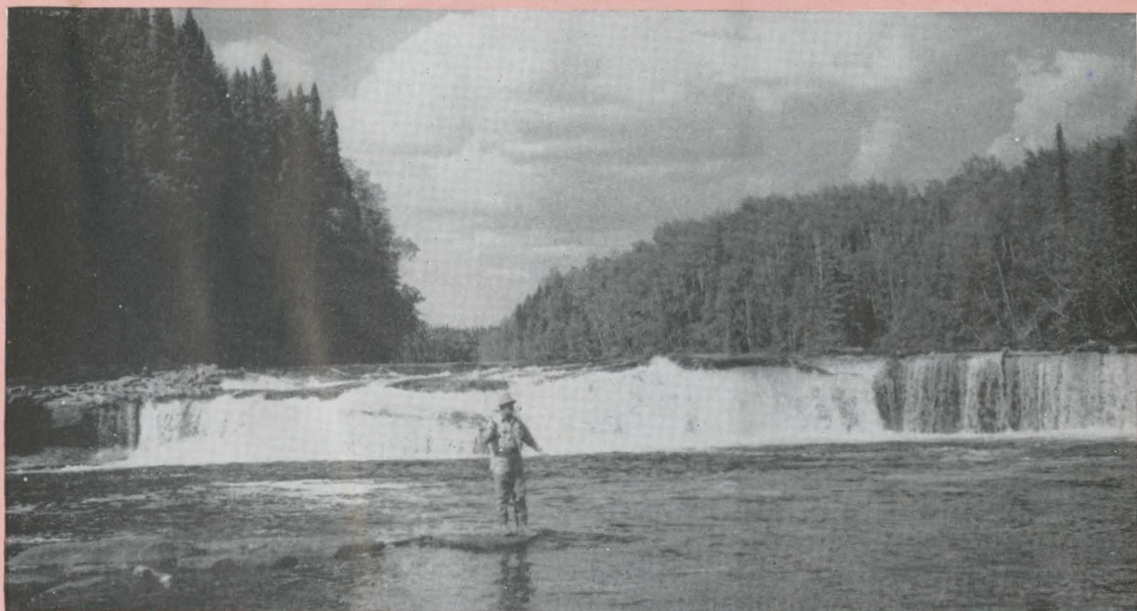
The entrance to the harbor of St. John's, capital of the province; Signal Hill on the left.



The Newfoundland Hotel in St. John's is one of Canadian National's chain of all-year and resort hotels.



The Big Falls Pool on the Humber River produces many prized salmon trophies for the angler.



The historic Colonial Building in St. John's, where the provincial legislature meets.

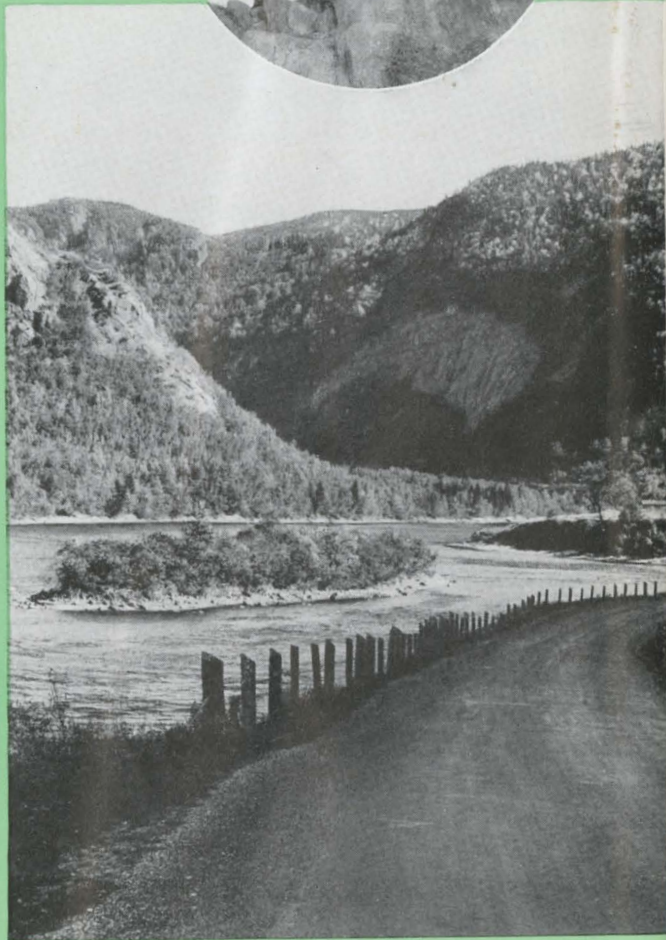
CANADIAN NATIONAL RAILWAYS
Will take you there



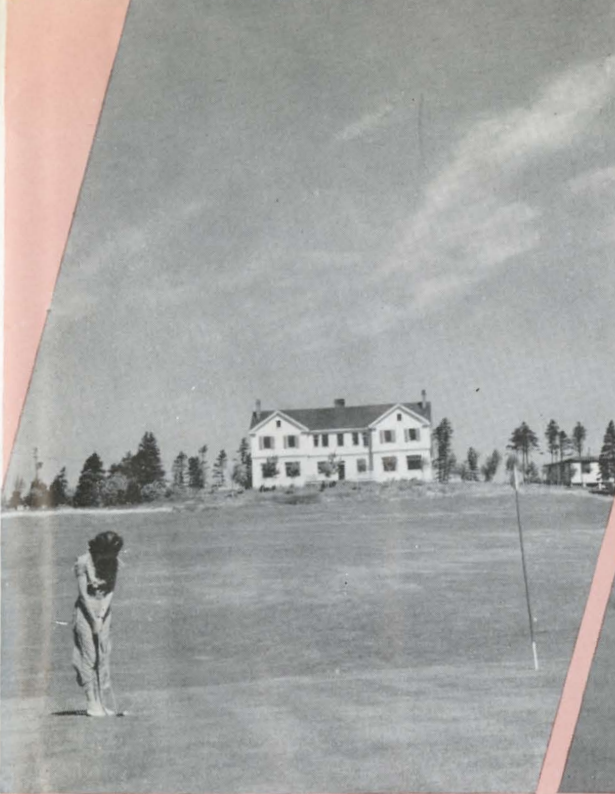
Newfoundland



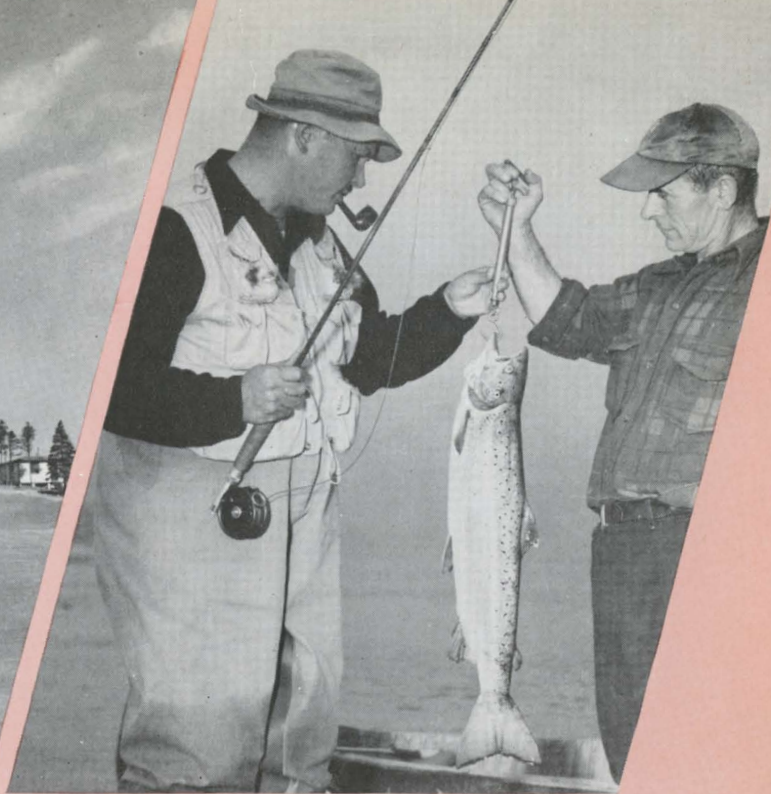
Miles and miles of rugged shore make the coastal cruises unforgettable.



Along the Humber River, famous for beauty and its fishing.



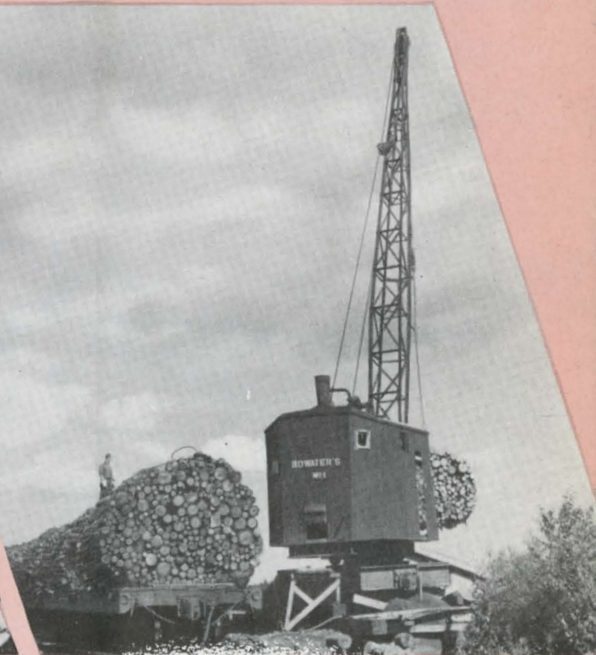
Out of a rough country has been hewn this delightful golf course at St. John's.



Newfoundland is a treasure island for the fisherman and hunter.



Cod has been the mainstay of the people for centuries.



The forests are almost as rich as the sea.

CANADIAN NATIONAL RAILWAYS
Will take you there



Newfoundland



The Canadian National steamer "Bar Haven" calls at one of the picturesque outports.



Glynmill Inn, the attractive hotel at Corner Brook, one of the great pulp and paper centres.



Tourist visitors are always interested in Newfoundland handicrafts, some of them from far-off Labrador.

NOTE:—The Canadian National Railways, in presenting the information contained herein, has taken every reasonable care to give authentic data. It will be readily understood the Railway is not in a position to assume responsibility for the class of accommodation provided by the places listed or the rates shown, except for Canadian National Hotels, and the information is therefore given as a guide as to cost and from which the intending visitor may make his own selection.

Station or P.O. Address and Hotel or Boarding House	Proprietor or Manager	Distance from Station	No. of Rooms		RATES	
			With Bath	Without Bath	Per Day	Per Week

PRINCE EDWARD ISLAND

BORDEN Borden Inn*	Nounan & MacWilliams	1 mile	24	\$ c.	\$ c.
BRACKLEY BEACH: (Hunter River Stn.) Brackley Lodge*	Mrs. S. J. MacCallum	14 miles	20	4.00	26.00 up
Gregor's*	Walter Gregor	11 miles	22	6.50 up	45.50 up
Shaw's*	R. Gordon Shaw	11 miles	39	7.50 up	52.50 up
CAVENDISH: (Hunter River Stn.) Avonlea Lodge*	Mrs. Blanche Wyand	12 miles	Cabins	5.50	30.00 up
Ingliside Lodge*	Mrs. E. F. Coffin	11 miles	Cabins	5.50 up	35.00 up
Lakeview Lodge*	Miss Mary M. Stewart	11 miles	Cabins	5.00 up	35.00 up
Links Inn*	A. B. Lepage	11 miles	14	6.00 up	38.50 up
Parkview Farm*	Lorne MacNeill	12 miles	5	2.00 E.	
Shilving Waters Lodge*	Mrs. Leta Andrew	11 miles	Cabins	5.00 up	30.00 up
CHARLOTTETOWN: The Charlottetown. Belmont Lake Lodge*	Can. Nat. Rys.	½ mile	110	5.50 E. up	
Dalway by the Sea*	Mrs. Wallace Andrew	3 miles	15	1.50 E.	
Keppoch Beach*	Wendell H. Worth	16 miles	13	7.00 up	On App.
Queen.	L. F. McDonald	4 miles	25	7.50 up	On App.
Russ.	D. L. O'Rourke	½ mile	25	2.75 E. up	
	Mrs. Hazel MacLean	¼ mile	25	2.00 E.	12.00 E.
MALPEQUE (Kensington Stn.) McGougan House*	Mrs. S. McGougan	6 miles	3	On App	plication
MONTAGUE Lane's Cottages*	W. H. Lane	400 yards	Cabins	2.00 E. up	
MacDonald.	M. F. MacDonald	200 yards	10	2.00 E.	28.00
Poole.	Mrs. T. E. Inman	500 yards	12	5.00	
NORTH RUSTICO (Hunter River Stn.) Doyle's Tourist Home*	Mrs. M. J. Doyle	11 miles	6	4.00	28.00
SOURIS Seaview*	Mrs. F. White	300 yards	25	5.50	38.50
STANHOPE: (Charlottetown Stn.) Bayside Lodge*	Mrs. Hilda Howatt	12 miles	Cabins	1.50 E. up	9.00 E. up
Kiloran Lodge*	J. M. MacFadyan	15 miles	17	6.50	42.00
Park Hill Resort*	Mrs. P. J. Proud	13 miles	Cabins	1.50 E. up	On App.
Seaside Inn*	Mrs. John W. Warren	16 miles	35	6.00	35.00 up
Stanhope Beach Inn*	Raoul Raymond	14 miles	6	39	45.50 up
Windermere Cabins*	Mrs. D. M. Lyle	16 miles	Cabins	2.00 E.	
SUMMERSIDE: Clifton. Garden of the Gulf Auto Court-and Cottages*	Mrs. L. MacEwen	200 yards	16	14	4.50 up
Harbor View Cabins*	V. H. Groom	¼ mile	Cabins	3.00 E. up	On App.
Queen.	E. E. Parkman	½ mile	Cabins	2.00 E. up	35.00
	Pope & McQuarrie	200 yards	30	5.50	

NEW BRUNSWICK

ALMA (Moncton Stn.) Parkland*	H. A. Dow	50 miles	1	18	2.50 E. up	
BATHURST: Carlton.	W. J. Kent & Co. Ltd.	1 mile	20	20	2.50 E. up	
Gloucester.	W. J. Kent & Co. Ltd.	1 mile	40	10	3.00 E. up	
New Royal.	C. Burogills	1 mile	10	30	On App	plication
BLACKVILLE Underhill.	Mrs. A. J. Underhill	¼ mile	7	3.50		
BOISTOWN Griff-Inns*	Clayton Stewart	1 mile	Cabins	7.00		
BUCTOUCHE Buctouche Bay Inn	Mrs. E. Gallant	1½ miles	13	3.50 up	21.00 up	
CAMPBELLTON: Chateau Restigouche.	J. L. Winton	100 yards	30	40	2.50 E. up	On App.
New Florence.	Arthur Bugold	½ mile	22	2.50 E. up	On App.	
CAPE TORMENTINE Sea Side.	Layton Spence	200 yards	28	4.00	22.00	
CARAQUET Sea Gull Inn*	Miss Mary E. Rive	1 mile	6	6.00		
CHALEUR BEACH (Bathurst Stn.) Kent Lodge*	J. Harper Kent	5 miles	60	10	5.00 up	
CHATHAM: Adam House.	Mrs. Annie MacDonald	½ mile	4	24	3.00 E. up	
CHIPMAN Jardine's	Frank Jardine	¼ mile	15	2.00 E. up		
McRae	J. McRae	¼ mile	4	5	2.00 E. up	
CLAIRS Clairs' House	Wm. Pinette		25	2.00 E.	12.00 E.	
DALHOUSIE Bayview	W. Barriault	¼ mile	10	4.85 up	21.00 up	
Chaleur Inn	M. Neilson	½ mile	6	24	3.50 E.	
DORCHESTER Rockland Inn.	Mrs. S. Greenberg	¼ mile	6	2.00 E. up		

* Open in Summer only. † Golf.

Station or P.O. Address and Hotel or Boarding House	Proprietor or Manager	Distance from Station	No. of Rooms		RATES	
			With Bath	Without Bath	Per Day	Per Week

NEW BRUNSWICK—Continued

EDMUNDSTON: Grand Central.	Robt. Sirols	¼ mile	20	26	6.00 up	
Madawaska Inn.	Fraser Co. Ltd.	1 mile	20	10	8.00	
New Royal.	Fred Nolat	¼ mile	50	30	2.50 E. up	
EVANDALE Eveleigh	S. A. Eveleigh	At Stn.	20		3.75	22.75
FREDERICTON: Barker House.	J. A. Cain	¼ mile	15	25	2.00 E. up	
Homestead Inn.	McMurdo & Crosdale	¼ mile	3	13	5.00 up	
Lord Beaverbrook.	G. C. Cherry	¼ mile	160		3.50 E. up	
Queen.	C. F. Boyle	¼ mile	15	25	2.00 E. up	
Windsor.	E. R. Ransome	¼ mile	24	60	2.00 E. up	
GAGETOWN Gagetown.	D. C. MacMillan	¼ mile	12		3.50	20.00
The Manor.	T. H. Scovill	¼ mile	6		4.50	25.00
GRAND FALLS Grand Falls.	Jos. LeBlanc	1½ miles	12	33	2.50 E. up	14.00 E. up
JACQUET RIVER Traveller's Rest.	Mrs. Alex Turvey	¼ mile	1	5	3.00	21.00
LOGGIEVILLE Loggie House.	W. Turk	¼ mile	25		2.00 E. up	
MONCTON: Barker.	J. C. Purts	600 yards	28		2.50 E. up	14.00 E. up
Bonacoord.	W. E. Donovan	300 yards	2	18	2.25 E. up	12.00 E. up
Brunswick.	W. C. DeBow	At Stn.	60	40	3.00 E. up	
New Windsor.	F. A. Ryder	300 yards	48	52	2.75 E. up	
Queen.	R. F. Legere	500 yards	25	15	2.50 E. up	
Westmorland.	Miss B. Ferguson	At Stn.	15	32	1.50 E. up	
NEWCASTLE: Ideal Inn.	M. L. Staples	¼ mile	20	18	4.50 up	
Miramichi.	W. A. McCombs	¼ mile	9	26	3.00 E. up	
Woodland Lodge.	W. N. Craig	¼ mile	3	4	3.00 E. up	
NEW MILLS Bonaventure Lodge*.	Mrs. E. B. Malcolm	¼ mile	Cabins	5.00 E. up		
PETITCODIAC Burlington.	P. A. Brown	100 yards	17	4.00 up	20.00 up	
POINT DU CHENE Greenough House*.	Mrs. F. R. Greenough	150 yards	9	3.50	24.50	
Holiday Inn*.	Mrs. M. E. Gillespie	100 yards	8	4.00 up	25.00 up	
Palmer House*.	Max Pheilan	200 yards	9		13.00 up	
PORT ELGIN Strathcona.	S. H. Chandler	¼ mile	19		2.00 E. up	
RICHIBUCTO Leger.	T. Leger	¼ mile	10	5.50	35.00	
ROTHESAY: Kennedy House.	A. J. Kennedy	¼ mile	14	3.00	21.00	
Shadow Lawn.	J. G. Fleming	¼ mile	5	7	5.00	30.00
SACKVILLE: Marshlands Inn.	H. W. Read	¼ mile	6	6	3.60 E. up	
SAINT JOHN: Admiral Beatty.	E. B. Sweeney	¼ mile	160	70	4.00 E. up	
Belmont.	Ross Bros	¼ mile	6	50	2.50 E. up	
Royal.	T. E. English	¼ mile	75	75	2.50 E. up	
ST. LEONARD Cyr.	Suzanne Cyr	150 yards	20	20	2.50 E. up	
SHEDIAC: Bona Vista Lodge*.	Mrs. E. A. Kee	3 miles	10	10	4.00 E. up	28.00 E. up
Shediac Inn.	W. R. Amiraault	100 yards	40	10	3.50 up	
SUSSEX Depot House.	D. R. Munro	At Stn.	6	21	2.00 E. up	10.00 E. up
TRACADIE Coughlan House.	John Coughlan	200 yards	2	10	2.00 E. up	
Le Breton.	Alex. LeBreton	¼ mile	15		4.75	20.00
WOODSTOCK: Carlisle.	H. A. Bryant	1 mile	30	20	2.50 E. up	
Hammond House.	J. J. Jackson	1 mile	4	24	6.00 up	28.00 up
YOUGHAL BEACH (Bathurst Stn.) Bay View House*.	P. W. Thomson	5 miles	17		On App	plication
Harbor View Farm*.	Mrs. R. A. Willis	5 miles	6		3.75	24.00
Ingle-Neuk Lodges*.	R. P. W. Thomson	5 miles	22		4.50 up	30.00 up
Taylor House*.	Mrs. H. Taylor	5 miles	8		4.00	25.00

* Open in Summer only. † Golf.

CANADIAN NATIONAL

Caters to its patrons with excellent Passenger, Freight, Express, Telegraph, Hotel, Steamship and Air line Services.

CANADIAN NATIONAL HOTELS

AMERICAN PLAN—Includes Room and Meals
EUROPEAN PLAN—Rooms only
CONTINENTAL PLAN—Room and Breakfast

Open All Year unless otherwise shown.

CHATEAU LAURIER
OTTAWA, ONT.

550 Rooms

European Plan

PRINCE ARTHUR HOTEL
PORT ARTHUR, ONT.

110 Rooms

Continental Plan

THE FORT GARRY
WINNIPEG, MAN.

260 Rooms

European Plan

PRINCE EDWARD HOTEL
BRANDON, MAN.

80 Rooms

Continental Plan

THE MACDONALD
EDMONTON, ALTA.

185 Rooms

European Plan

THE BESSBOROUGH
SASKATOON, SASK.

260 Rooms

European Plan

THE NOVA SCOTIAN
HALIFAX, N.S.

150 Rooms

European Plan

THE CHARLOTTETOWN
CHARLOTTETOWN, P.E.I.

110 Rooms

American Plan

NEWFOUNDLAND HOTEL
ST. JOHN'S, NFLD.

140 Rooms

European Plan

JASPER PARK LODGE
JASPER, ALTA.

650 Guests

American Plan

Open June 10th to September 15th, 1953

MINAKI LODGE
MINAKI, ONT.

185 Guests

American Plan

Open June 24th to September 8th, 1953

PICTOU LODGE
PICTOU, N.S.

100 Guests

American Plan

Open June 27th to September 8th, 1953

For further particulars, descriptive booklets, and full information write or wire the Hotel Manager, or apply to any Canadian National Passenger Representative, or to: General Manager of Hotels, Ottawa, Ont.

CANADIAN NATIONAL RAILWAYS



**TOURIST ACCOMMODATION IN NEWFOUNDLAND, NOVA SCOTIA, PRINCE EDWARD ISLAND AND NEW BRUNSWICK
RESORT REGIONS—REACHED BY CANADIAN NATIONAL RAILWAYS**

Station or P.O. Address and Hotel or Boarding House	Proprietor or Manager	Distance from Station	No. of Rooms		RATES		American Plan unless marked with "E" to indicate European Plan
			With Bath	Without Bath	Per Day	Per Week	
NEWFOUNDLAND							
BONAVISTA Thornia	Mr. Hussey	1/4 mile	11	5	\$ c.	\$ c.	
BRIGUS Willow Arms	Mrs. Bartlett	100 yards	5		5.00		
CORNER BROOK Erin House	Mrs. J. Wiseman	At Stn.	12		6.50		
Glynnmill Inn	Manager	1/4 mile	11	40	4.50 E.up		
Pickering Inn	Mrs. Pickering	1/4 mile	1	13	3.50 E.up		
CLARENVILLE Balmoral	H. Drover	At Stn.	25		6.00		
GANDER Skyways	Manager	1/2 mile	200		3.50 E.up		
HARBOUR GRACE Archibald's	Miss R. Archibald	1/2 mile	25		5.00		
HEART'S CONTENT (Whitbourne Stn.)	Mrs. J. J. Young	40 miles	3		5.00		
HOLYROOD Beach Cottage	Mr. E. Godson	1/2 mile	9		4.50		
Butter Pot Inn	Mrs. Hickey	3 miles	8		4.50		
PORT AUX BASQUES Collier's	Mrs. C. Collier	1/2 mile	8		5.50		
Twin Towns	R. Sheaves	1 mile	13		5.00		
St. CATHERINE'S (Holyrood Stn.)							
Riverside & Cabins	J. Power	21 miles	Acc. 25		4.50		
ST. GEORGE'S White House	A. Delaney	1/2 mile	7		6.00		
ST. JOHN'S Newfoundland	Can. Nat. Rys.	1/2 mile	140		5.50 E.up		
Ralsam	Mrs. Paey	1/2 mile	47		6.00	On App.	
Crosble	W. Spurrell	1/2 mile	2	38	7.50		
SOUTH BRANCH The Bungalow*	M. Tompkins	At Stn.	18		5.50		
STEPHENVILLE CROSSING Beach View Hotel	Manager	200 yards	18		6.00 up		
Dhooon Resort*	R. Doucette	7 miles	Cabins		12.50		
TOMPKINS Afton Farm House	Mrs. J. F. Tompkins	At Stn.	20		7.00		

NOVA SCOTIA

Station or P.O. Address and Hotel or Boarding House	Proprietor or Manager	Distance from Station	No. of Rooms		RATES		American Plan unless marked with "E" to indicate European Plan
			With Bath	Without Bath	Per Day	Per Week	
AMHERST Amherst	W. Hill	100 yards	17	23	\$ c.	\$ c.	
Church Hill Rest*	Mrs. G. D. Parsons	1/2 mile	12		3.00 E.up		
Fort Cumberland	W. F. Harris	1/2 mile	75		4.00 E.up		
Sunny Home	Mrs. W. R. Tufts	1/2 mile	1	3	2.00 E.up		
ANTIGONISH Royal George	Geo. O. Armour	1/2 mile	32		3.25 E.up		
The Dingle Lodge & Cabins	A. L. Cunningham	4 miles	32		2.50 E.up		
ARICHAT (Loudsdale Stn.)							
Commercial	Mrs. D. H. Cutler	20 miles	6		5.00		
BADDECK (Iona Stn.)							
Baddeck	D. R. MacIntosh	12 miles	8	16	2.50 E.up		
Bute Arran*	Mrs. A. M. Harrison	1 1/2 miles	2	3	5.50 up	On App.	
Inverary Inn	C. A. Fownes	12 miles	12		9.25 up	On App.	
Mociochea Camp*	Mrs. W. Plummer	1 mile	Cabins		1.50 E.up	14.00 E.up	
New Bras d'Or	T. A. Taylor	12 miles	9	16	2.00 E.up		
BARRINGTON Elm Tree*	Mrs. V. B. Allen	1/2 mile	4		1.50 E.up		
MacMullen House	J. H. MacMullen	1/2 mile	8		4.00 up	On App.	
BARRINGTON PASSAGE Victoria	D. M. Hankinson	300 yards	25		3.75 up	20.00 up	
BLANDFORD (East River Stn.)							
Out-of-the-Way Inn	Mrs. C. M. Publicover	9 miles	6		2.50 E.	12.00 E.	
BRIDGETOWN: Colonial House	Mrs. E. Pratt	1/2 mile	9		5.00	On App.	
BRIDGEWATER: Cedar Inn	Geo. K. Slack	1/2 mile	2	4	2.00 E.up		
Fairview	J. H. Dechman	1/2 mile	8	29	5.50 up	35.00 up	
BRITON COVE (Bras d'Or Stn.)							
MacLeod's	Mrs. J. J. MacLeod	33 miles	5		5.00	28.00	
CALEDONIA Ked-Ge-Lodge*	H. W. Phinney	13 miles	23	14	7.00 up	45.00 up	
CHESTER Casa Blanca	Mrs. A. H. Marshall	1/2 mile	1	6	5.00	30.00	
Mitchell House*	Miss M. Mitchell	1/2 mile	5		4.00 up	22.00 up	
Owl's Head Tuna Camp*	Phil. H. Moore	3 miles	14		4.00 E.up		
Sunset Cottage*	Mrs. Irene Bond	1/2 mile	7		5.00 up	On App.	
Young's*	Wm. P. Young	2 miles	8	12	6.00 up	40.00 up	
CHEVICAMP (Inverness Stn.)							
Cabot	Mrs. Delphin Aucoin	40 miles	6		5.00	28.00	

* Open in Summer only. † Golf.

Station or P.O. Address and Hotel or Boarding House	Proprietor or Manager	Distance from Station	No. of Rooms		RATES		American Plan unless marked with "E" to indicate European Plan
			With Bath	Without Bath	Per Day	Per Week	
NOVA SCOTIA—Continued							
CLAM HARBOUR (Musquodoboit Harb. our Stn.)	Mrs. R. Y. Sanford	16 miles	8		3.00	20.00	
DARTMOUTH Belmont	J. P. Richards	1 mile	11	30	3.00 E.up		
ENGLISHTOWN (Bras d'Or Stn.)							
MacRitchie's Inn	Mrs. M. MacRitchie	15 miles	3		4.00 up	25.00 up	
GLACE BAY: Glace Bay	S. H. McCord	500 yards	25		4.00 E.up		
GRANDE ANSE (Loudsdale Stn.)							
McPherson	Mrs. R. J. Urquhart	1 1/2 miles	6		4.50 up	24.00 up	
White House Lodge	Leonard McGillivray	1/2 mile	8		2.00 E.up		
GREENFIELD (Liverpool Stn.)							
Freeman House*	E. L. Freeman	20 miles	8		6.00 up	On App.	
GUYSBORO (Monastery Stn.)							
The Grant*	Mrs. Chas. Jenkins	20 miles	12		6.00 up	38.00 up	
HALIFAX: The Nova Scotian	Can. Nat. Rys.	At Stn.	150		5.50 E.up	On App.	
Acadian	Max Pascal	200 yards	10	20	2.50 E.up	15.00 E.up	
Corwallis	E. P. Boutiller	200 yards	31		2.50 E.up	15.00 E.up	
Dresden Arms	H. B. Elliott	1 mile	7	14	2.50 E.up		
Gainsboro	J. C. Corbett	100 yards	40		1.75 E.up		
Lord Nelson	Forbes Thrasher	1/2 mile	186		5.00 E.up		
Morris Lodge	Mrs. Ada J. MacCallum	1/2 mile	15		3.00 E.up		
Sword & Anchor	Mrs. J. S. Corbett	1/2 mile	80		3.00 E.up		
The Carleton	W. G. Fraser	1/2 mile	23		2.00 E.up		
Winn's	V. A. Murphy	1/2 mile	23		2.00 E.up		
HUBBARD Anchorage*	F. T. Publicover	1 1/2 miles	15		3.50 up	20.00 up	
Iona*	E. E. Dauphinee	1 mile	16		4.00 up	On App.	
HUNT'S POINT: Tuna Inn*	Mrs. H. W. Aslin	1/2 mile	Cabins		4.00 E.up		
INGONISH (Sydney Stn.)							
Keltic Lodge*	Fred T. Irwin	76 miles	88		11.00 up	On App.	
The Point	Allister MacLeod	65 miles	25		7.50 up	45.50 up	
INVERNESS Belmont	G. V. Chiasson	16 miles	8		2.50 E.up	15.00 E.up	
Normaway Inn	G. Hart	25 miles	10	6	3.00 E.up	On App.	
ITALY CROSS Arenburg House	Mrs. H. S. Arenburg	7 miles	12		4.50 up	On App.	
LIVERPOOL: MacMillan	L. A. Pottle	1/2 mile	7	33	3.00 E.up		
LOCKPORT MacMillan Manor	Mrs. W. M. MacMillan	4 miles	1	7	5.00 up	32.00 up	
Ragged Islands Inn	Miss D. C. Arnold	1/2 mile	1	5	7.50 up	35.00 up	
The Billows	Miss Ann Bill	4 miles	3	7	5.50 up	35.00 up	
LUNenburg: Business Lodge	F. A. Glover	1/2 mile	9	1	2.00 E.up		
Roseawen Manor	G. J. Campbell	1/2 mile	14	6	2.50 E.up	17.50 E.up	
Hillside	G. G. De Mone	At Stn.	8		2.00 E.up		
Sea Breeze*	Mrs. M. Lonnes	1 mile	4		5.00 E.up		
Sunny Brook*	Mrs. M. E. Mader	1 mile	3		5.00	32.00	
MAHONE BAY Green Shutters*	Miss Laura J. Strum	2 1/2 miles	8		4.00 up	24.00 up	
Royal	G. L. Morris	1 mile	2	15	3.75 E.up	On App.	
MARGAREE FORKS (Inverness Stn.)							
Colbreen Lodge	C. L. Gillis	18 miles	30		5.00 up	35.00 up	
MIDDLETON American House	J. S. Miller	300 yards	6	18	9.00 up	On App.	
Bramley Gardens	Alex. Labelle	1 mile	4		2.00 E.up		
MULGRAVE Victory Inn	F. W. Digdone	200 yards	6	8	2.00 E.up	9.50 E.up	
MUSQUODOBOIT HARBOUR Parker House	Martha Parker	50 yards	5		2.00 E.	14.00 E.	
Lazy-Tide Lodge	J. B. Davis	1/2 mile	5		4.00	22.00	
NEW GERMANY Pines	Mrs. Edith Hamm	400 yards	5		3.00 E.		
NEW GLASGOW: Norfolk	Geo. E. Welch	250 yards	50	25	3.25 E.up		
Scotian Lodge	Mrs. James MacKay	1/2 mile	2		2.50 E.up		
The Nag's Head	Mrs. L. Bruce-Williams	1/2 mile	7		2.00 E.up		
West Haven	Mrs. W. J. Hamm	1/2 mile	1	6	2.00 E.up		
Wynn's Inn	Walter Wynn	1/2 mile	1	6	2.50 E.		
NORTH SYDNEY Arlie	Miss M. MacLean	2 miles	6		6.00 up	On App.	
New Belmont	A. Green	1/2 mile	12	28	2.75 E.up		
Beadale	Miss J. Joseph	1/2 mile	15		2.50 E.		
ORANGEDALE Bay View	M. J. Gillis	6 miles	20		4.00 up	On App.	
OXFORD Millstone	J. L. Hatt	1 mile	10		5.75	22.75 up	
Wood's	N. & D. Wood	1/2 mile	10		2.00 E.up		
PARRSBORO (On Cumberland Rly.)							
Cumberland Inn*	E. A. Saylor	150 yards	14		2.00 E.up		
Parrsboro	Mrs. B. L. Carty	200 yards	24		2.50 E.up		

* Open in Summer only. † Golf.

Station or P.O. Address and Hotel or Boarding House	Proprietor or Manager	Distance from Station	No. of Rooms		RATES		American Plan unless marked with "E" to indicate European Plan
			With Bath	Without Bath	Per Day	Per Week	
NOVA SCOTIA—Continued							
PICTOU: Picou Lodge*	Can. Nat. Rys.	4 miles	100		\$ c.	\$ c.	
(Open June 27-Sept. 8 — Rooms with E. G. Irish		1/2 mile	12	11	3.25 E.up		
Stacy	F. S. Head	1/2 mile	5	25	2.00 E.up		
PORT HAWKESBURY Black & White Inn	P. H. MacKinnon	150 yards	1	9	2.50 E.up		
Farquhar House	Miss M. MacMaster	1/2 mile	2	6	5.50 up		
Lorraine	J. E. Spray	1/2 mile	4	10	2.50 E.up		
PORT MOUTON Scotia House	Carl. S. Wagner	100 yards	10		4.00 up	20.00 up	
PUGWASH Film Lodge*	Mrs. F. Seaman	200 yards	6		2.00 E.	10.00 E.	
Pineo Lodge*	Mrs. L. Blanche	1/2 mile	8		4.00 E.up		
Pineo Wilson's*	Pineo Wilson	1/2 mile	4		2.50 E.up	On App.	
The Tides Inn	H. R. Hollis	150 yards	10		2.00 E.	10.00 E.	
QUEENSLAND Sea Breeze	H. D. Boone	1/2 mile	4	25	6.00 up		
ST. PETERS MacDonald's	Misses MacDonald	300 yards	2	10	5.50	30.00	
SHEET HARBOUR (Upper Musquodoboit Stn.)	C. J. Lind	40 miles	2	8	2.00 E.up		
SHELBURNE Atlantic House	W. T. Clow	1/2 mile	25	25	2.50 E.up	On App.	
Loyalist Inn	Mrs. Margaret Lunn	1/2 mile	17		2.00 E.up	On App.	
Shel-Sea Lodge	Wm. K. Fox	1/2 mile	3	11	6.00 up	35.00 up	
Three Gables	M. G. Black	1/2 mile	4		2.00 E.up		
SPRINGHILL (Springhill Jct. Stn.)							
Carleton	S. C. & T. B. Chapman	5 miles	25		2.50 E.up	On App.	
Hyatt's	H. L. Hyatt	4 miles	14		2.00 E.up		
Tourist Home	Mrs. A. M. Somers	4 miles	8		1.50 E.up		
STELLARTON Kenwood Lodge	Mrs. Loretta Madden	50 yards	2	4	2.00 E.up		
SYDNEY Beverley	G. Jones	200 yards	8	28	2.50 E.up	15.00 E.up	
Clifden House	Mrs. D. McCuaid	1/2 mile	2	14	2.50 E.up		
Gillis House	F. L. Gillis	1/2 mile	7		1.50 E.		
Isle Royale	J. R. Freestone	1/2 mile					



The map shows Canadian National Railways principal lines serving the Provinces of New Brunswick, Nova Scotia, Prince Edward Island and Newfoundland and connections with some of the more important U.S. centres. Information as to fares and train services to any particular section will be gladly supplied by any of the Canadian National Railways passenger agencies listed below.

CANADIAN NATIONAL RAILWAYS PASSENGER AGENCIES IN CANADA AND UNITED STATES

Belleville, Ont.	346 Front St.	Regina, Sask.	Union Station
Boston, Mass.	497 Boylston St.	San Francisco, Cal.	502 Shreve Bldg., 210 Post St.
Burlington, Ont.	153 Colborne St.	Saskatoon, Sask.	C.N.Rys. Station
Brockville, Ont.	Cor. King and East Market Sts.	Seattle, Wash.	Joseph Vance Bldg. Third Ave. and Union St.
Buffalo, N.Y.	13 West Genesee	Sherbrooke, Que.	23 Wellington St. North
Calgary, Alta.	212 Eighth Ave., West	St. Catharines, Ont.	13 Queen St.
Charlottetown, P.E.I.	C.N.Rys. Station	Saint John, N.B.	49 King St.
Chicago, Ill.	103 West Adams St.	St. John's, Nfld.	C.N.R. Station
Cincinnati, Ohio	206 Dixie Terminal Bldg.	St. Louis, Mo.	314 North Broadway
Detroit, Mich.	1239 Washington Blvd.	Sudbury, Ont.	41 Durham St. South
Edmonton, Alta.	Cor. Jasper and 100th Sts.	Toronto, Ont.	6 King St. W.
Flint, Mich.	106 E. Kearsley St.	Vancouver, B.C.	527 Granville St. C.N.Rys. Travel Inf. Bureau, Hotel Vancouver
Fredericton, N.B.	580 Queen St.	Victoria, B.C.	Cor. Government and Fort Sts.
Guelph, Ont.	67 Wyndham St.	Washington, D.C.	922 Fifteenth St. N.W.
Halifax, N.S.	505-507 Barrington St.	Windsor, Ont.	364 Ouellette Ave.
Hamilton, Ont.	7 James St. North	Winnipeg, Man.	Main St. and Portage Ave.
Kansas City, Mo.	101 West Eleventh St.	Woodstock, Ont.	414 Dundas St.
Kingston, Ont.	377 Princess St.		
Kitchener, Ont.	19 King St. West		
London, Ont.	430 Richmond St.		
Los Angeles, Cal.	607 South Grand Ave.		
Milwaukee, Wis.	Room 502, 231 W. Wisconsin Ave.		
Minneapolis, Minn.	1040 Rand Tower, 527 Marquette Ave.		
Moncton, N.B.	C.N.Rys. Station		
Montreal, Que.	384 St. James St.		
New York, N.Y.	630 Fifth Ave.		
North Bay, Ont.	203 Main St. West		
Shawano, Ont.	3 King St. West		
Stawata, Ont.	Cor. Sparks and Metcalfe Sts.		
Sterboro, Ont.	324 George St.		
Philadelphia, Pa.	Suite 1142, Lincoln Liberty Bldg. Broad and Chestnut Streets		
Pittsburgh, Pa.	355 Fifth Ave.		
Portland, Me.	G.T. Railway Station		
Prince Rupert, B.C.	528 Third Ave., East		
Quebec, Que.	10 St. Anne St.		

EUROPEAN REPRESENTATIVES

London, S.W. 1, Eng.	17-19 Cockspur St.
London, E.C. 3, Eng.	95 Leadenhall St.
Liverpool, Eng.	Cunard Bldg., Water St.
Glasgow, C. 2, Scotland	9 Bothwell St.
Paris, France	1 Rue Scribe
Antwerp, Belgium	9 Koolkai

AUSTRALIA AND NEW ZEALAND REPRESENTATIVES

Sydney, Australia	"Scottish House", 19 Bridge St.
Melbourne, Australia	360 Collins St.
Wellington, New Zealand	Featherston Chambers

NO PASSPORTS REQUIRED BY U.S. CITIZENS TO ENTER CANADA, BUT IT WOULD BE HELPFUL TO CARRY SOME PROOF OF UNITED STATES CITIZENSHIP, SUCH AS A BIRTH CERTIFICATE

A friendly welcome awaits you at the Border and throughout the Dominion.

Canadian currency is now on the free market and its value in terms of U.S. dollars may fluctuate from day to day. Americans, if they so desire, may buy Bank Drafts, payable in Canadian funds, or Canadian currency from their bankers in the United States. When exchanging U.S. dollars such funds will be converted at the current rate of exchange.



Arrive Refreshed!

It's easy to reach Canada's famed resorts and vacation areas by Canadian National. Its lines extend from coast to coast, serve all ten Provinces of the Dominion. Named trains on transcontinental and international routes provide direct service or connections between all parts of Canada and principal cities of the United States. To enjoy your trip—go Canadian National



The bedroom-buffet-lounge cars are air conditioned and contribute to the enjoyment of your journey.



THE ONLY RAILWAY SERVING ALL TEN PROVINCES