

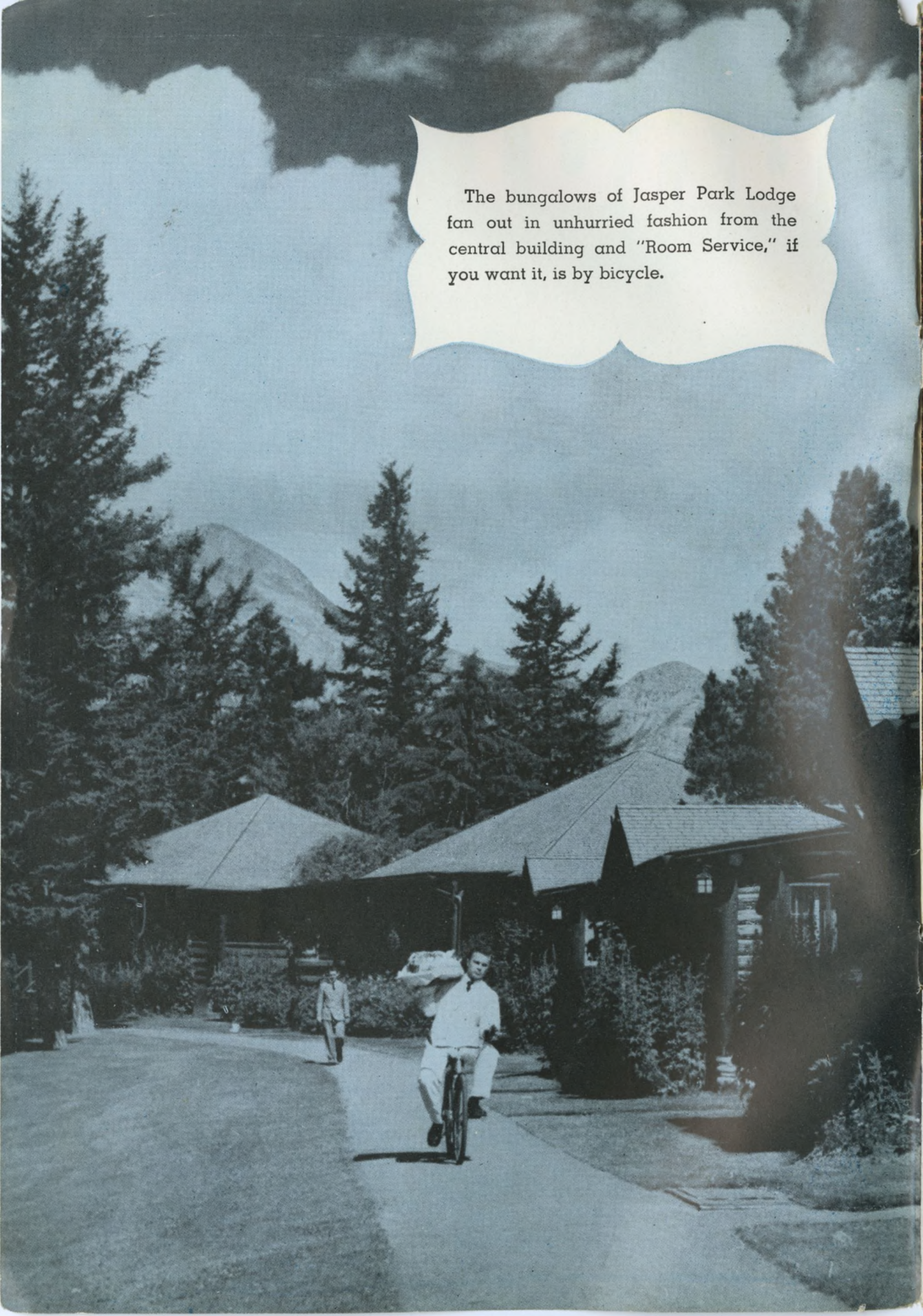
# JASPER

NATIONAL PARK • CANADIAN ROCKIES





The bungalows of Jasper Park Lodge fan out in unhurried fashion from the central building and "Room Service," if you want it, is by bicycle.







## *Invitation to Pleasure*

This is your invitation to fun.

Accept it and you'll have the best vacation you have ever enjoyed.

By words and pictures we have attempted in this book to tell you about hotel comforts and conveniences, about a famous golf course and an open air swimming pool, about motoring, trail riding and fishing. For the rest—for the exhilaration of the air, for the lift given to your spirit by the mountain peaks and the alpine meadows, the turbulent rivers and the cool transparent lakes—you'll have to read between the lines.

You can't get Jasper out of a book.

You'll really have to go and experience it for yourself.

R.S.V.P. to your Canadian National agent. He'll be glad to help you plan your trip.







## *The Time And The Place*

Jasper is at home to you all the year 'round, but the height of the season is between the middle of June and the second week of September. That is when Jasper Park Lodge is open.

At the back of this book we tell you about other hotels, chalets, cabins and camps in the Park.

How you come depends, of course, on where you live. Jasper National Park lies in the northern Canadian Rockies, on the border between the provinces of Alberta and British Columbia. It is on the main transcontinental line of the Canadian National Railways, directly reached through Vancouver and Prince Rupert on the Pacific Coast, through Edmonton, Saskatoon and Winnipeg in the western provinces, and Toronto, Montreal and other eastern cities.

It is to a fur trader that Jasper owes its name. No one knows much about him except that his name was Jasper Hawes, he had yellow hair and he came from Missouri.





# Room to Spread Yourself

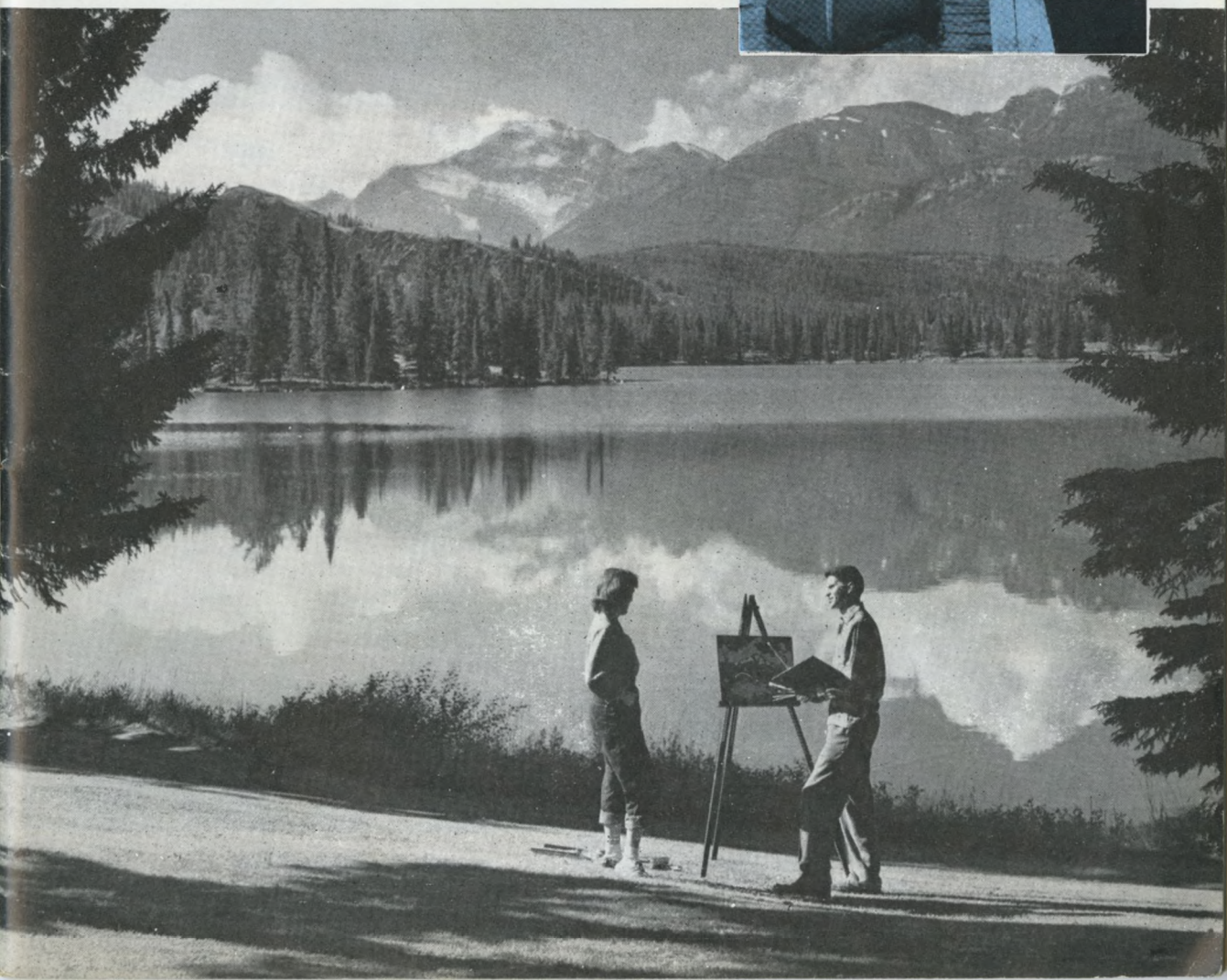
Jasper is the largest national playground in the world.

If you were ambitious and had time enough, you might take it all in. Motor highways traverse most of its length from north to south, with branches east and west, and where they don't go you find the pony trails, hundreds of miles of them, striking off in all directions to the outermost boundaries of the Park.

But you don't have to do a lot of travelling, you don't have to explore many of Jasper's 4,200 square miles, to enjoy this great mountain playground. You don't have to be a horseman, a climber or even a hiker. You can take it easy. Without stirring very far from your hotel you can get to know the mountains and have a vacation you will remember all your life.

The size of Jasper will permeate your consciousness but it won't make you feel small. You are surrounded by massive mountains, some of them mantled in snow all the year 'round, but they never oppress you with that shut-in feeling. Your railway train sets you down in the Athabaska Valley and its spaciousness makes you feel you have room to breathe and stretch, room to spread yourself.

From the Lodge grounds you look across shimmering Lac Beauvert to the lovely contour of Mount Edith Cavell.





# Jasper Park Lodge

The social centre of the Park is Jasper Park Lodge, the Canadian National Railways' summer hotel on the shore of Lac Beauvert, about three miles from the railway station. The Lodge is so well known—it has been extending its hospitality to world travellers for more than a quarter of a century—that you will not be surprised to discover that, instead of being one big building, it is a charming village of log bungalows. It was designed to harmonize with its surroundings and built of Jasper's own trees and stones.

Don't get the idea, however, that you'll be camping at the Lodge. It has all the refinement of a first class city hotel—good beds, attractive furnishings, hot water, telephone, a pleasant dining room where meals worthy of an epicure's palate are graciously served, an expansive lounge whose huge stone fireplaces and easy chairs invite you to relax in comfort after a day in the open, a ballroom where you may see movies and then dance to a smart orchestra.

Beautifully landscaped grounds lead down to the shimmering lake and its canoes and to the heated open air swimming pool with its high diving boards and its shallow section for the kiddies. It is only a step to the hard-surface tennis courts and a short walk to the corral where the saddle ponies are brought for your trail rides. Limousines drive up to the door for your trip to Mount Edith Cavell or the Columbia Icefield. The golf course is a pleasant stroll away.



Out of Jasper's own trees The Lodge was built, its natural unpainted logs and shingled roofs blending with the mountain landscape.





Vivid green grass and trees,  
gorgeous flowers, sparkling water  
and snowy mountaintops,  
under a sunny sky . . .

what an enchanting setting  
for this little village  
of bungalows which is Jasper  
Park Lodge.

*Rates at Jasper Park  
Lodge are shown on  
page 32.*







On those cool mountain evenings, after a day in the open, you'll enjoy relaxing in the lounge and find the great stone fireplace a boon.

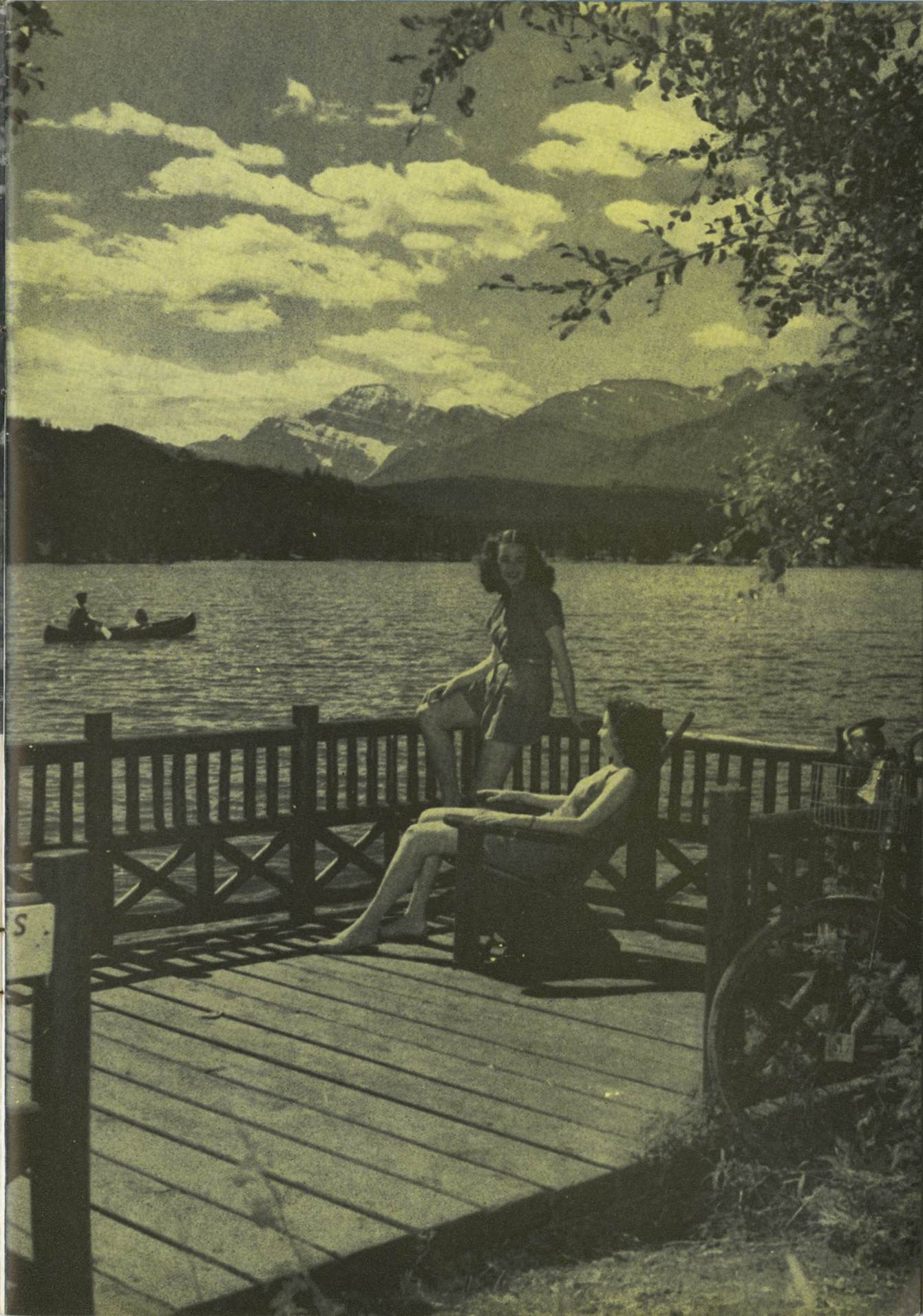


In Jasper you eat like royalty and sleep the sleep of the just.



You can sun-tan on the platforms by the lake. ➤







## *Top Flight Golf*

Among the guests at the Lodge last summer were a couple of keen golfers from Scotland. They spent most of their waking hours every day on the links. Good sturdy Presbyterians, they scrupulously denied themselves a game on the Sabbath, but they couldn't resist that course. They left their clubs behind but, after church in the morning, they set out to walk the fairways and greens from the first hole to the 18th, studying every trap and water hazard and working out Monday's strategy.

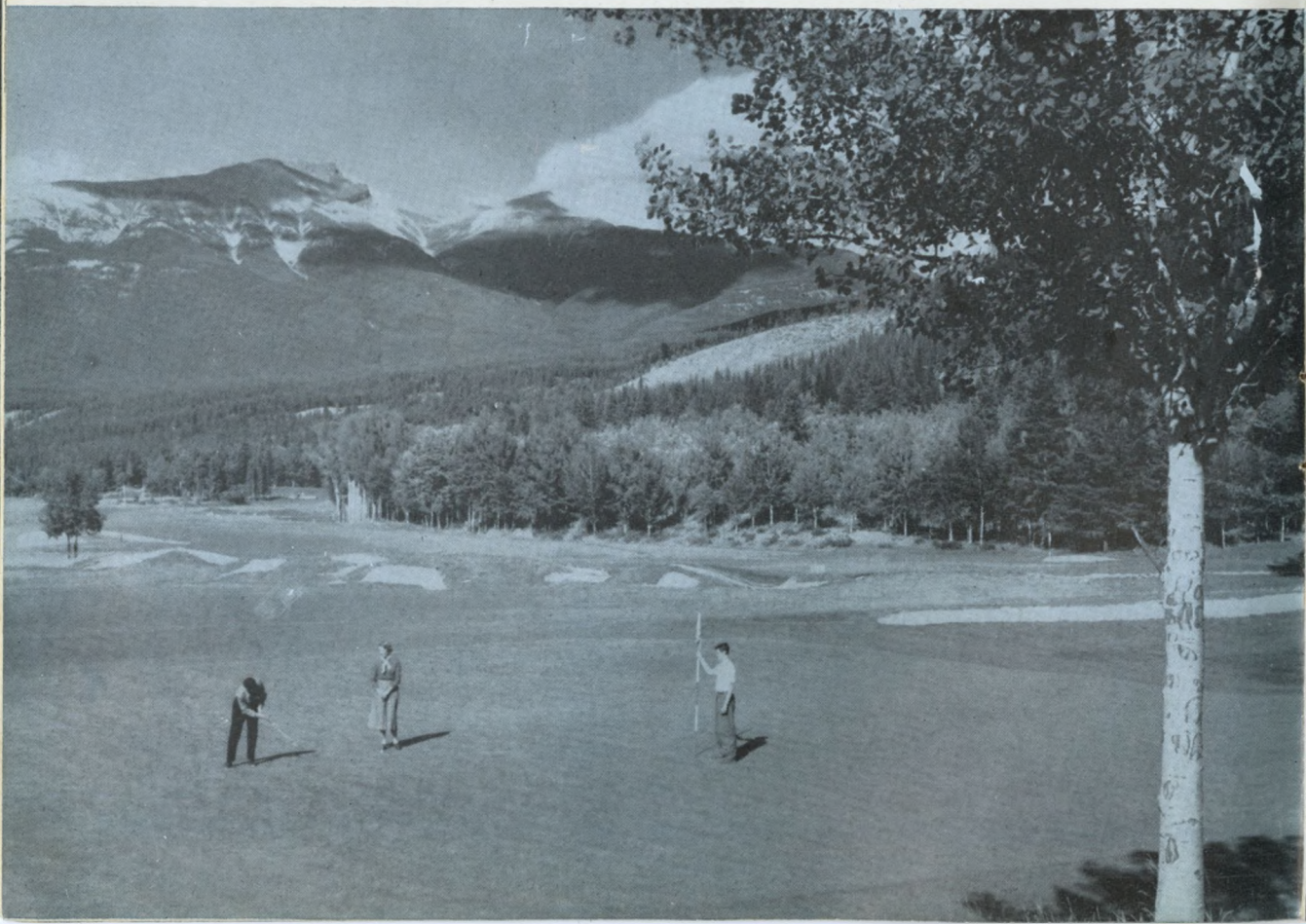
That's the way Jasper's famous course affects people. It's a championship course—6,700 yards, par 71—one of the finest on the continent. The hazards include the beautiful mountain terrain, which makes it hard to keep your eye on the ball, and sometimes a bear unconcernedly ambling over the grass, but they do not include strenuous climbs. It's a mountain course but a comfortable one.

It is laid out on the British principle, with the ninth hole farthest away from the clubhouse, but an additional three holes permit a nine-hole game, taking you back to the clubhouse with no cutting in.

Golf Week, culminating in the Totem Pole Tournament, attracts high calibre players, both men and women, every year.

Expertly designed, perfectly groomed for 25 years, the Jasper course is a joy, to champions and duffers alike.

The sixth green, and beyond the bunkers, No. 10 fairway.







For every lie there's a spectacular backdrop, like Pyramid Mountain.

The Jasper Park Lodge Totem Pole Trophy. ➔

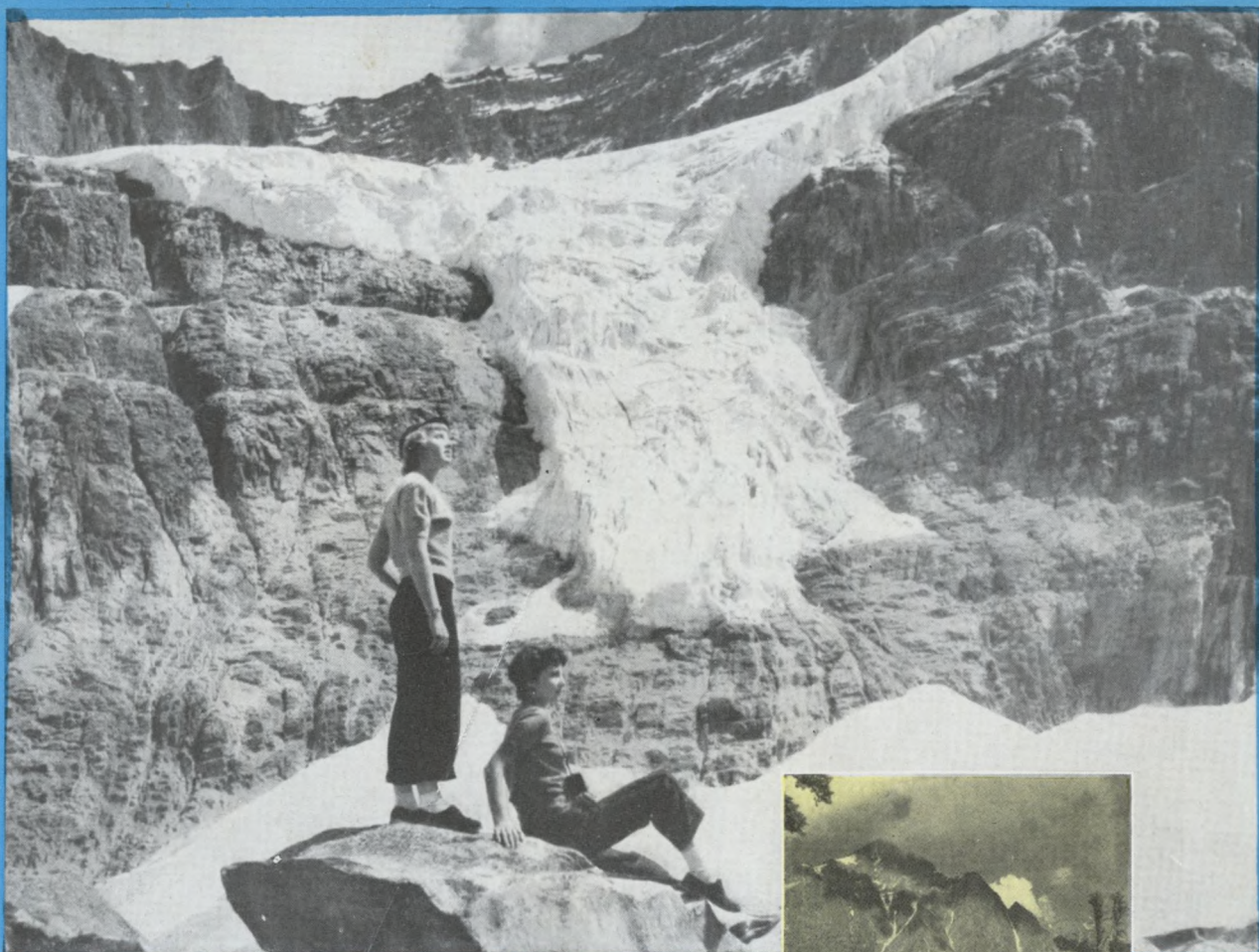
The 14th tee is surrounded by water on three sides and the drive to the fairway is across a corner of the lake.





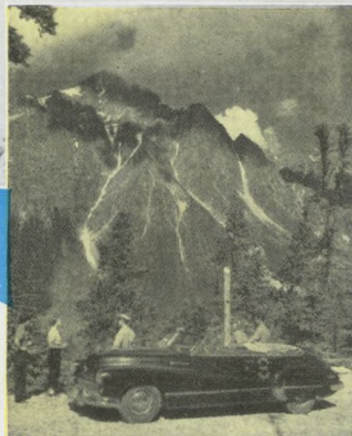






On the way to Angel Glacier, and at the end of your climb, you will see unforgettable alpine panoramas.

*For details of Sightseeing  
Motor Drives turn to  
page 26.*



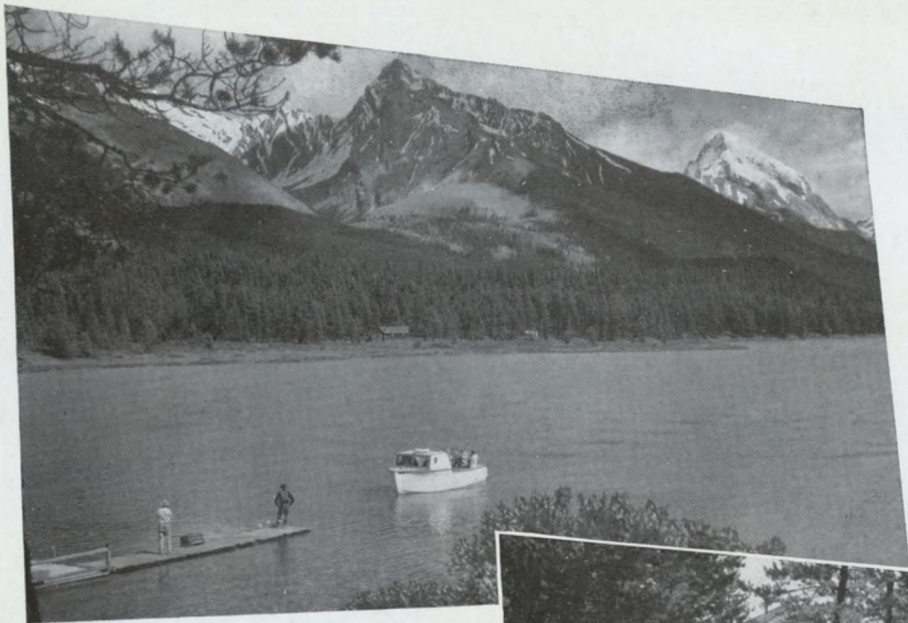
## *Journey to a Mountain*

Crowned with everlasting snow and ice, Mount Edith Cavell soars above the valley in superb beauty. You see it when you step from the train, you gaze at it across the lake from the Lodge, and if you take none of the other splendid motor drives, you shouldn't miss the trip that brings you to the foot of this mountain.

Thrilling switchbacks, revealing panoramas more and more wonderful, carry you over 20 miles and up 2,000 feet, to the outspread wings of its Angel Glacier. When you are there you may refresh yourself at the tea house and have the unusual experience of walking over the living ice.

Once the peak was the signpost directing the early explorers on their way through the passes of the Rockies to the Pacific Ocean. To you it stands as a symbol of all that is impressive and beautiful in Jasper.





When you visit Maligne Lake you will find a comfortable chalet, a modern launch for scenic lake trips, smaller craft for speckled trout fishing and—

the most thrilling scenery you have ever seen.







## *Mile High Lake*

From the Lodge to the end of Maligne Lake and return is a journey of 100 miles and, take it from the people who know, you'd do a lot of travelling to find another 100 miles as fascinating. You can ride over the Skyline Trail on a trip that takes four days, or you can do it in a day by automobile and motor boat.

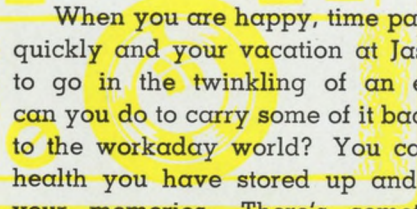
Going the easier and quicker way, you drive from your hotel to the spectacular Maligne Canyon and Medicine Lake. After a five-mile trip across Medicine, another car takes you along the Maligne River to the great lake.

It isn't size that makes Maligne great, although it is the largest glacier-fed lake in the Rockies; it is sheer breath-taking beauty. A mile above sea level it is walled in by mountain peaks that reach another two miles and more into the air. They are impressive mountains, steep as skyscrapers and much more massive. You can see them from the chalet, but to get the full perspective of their tremendous shapes and their glittering ice you should take the 17-mile boat trip to the end of the lake.

Maligne is not only famous for its beauty. Alpinists treat its mountains with respect and speckled trout fisherman sing its praises.



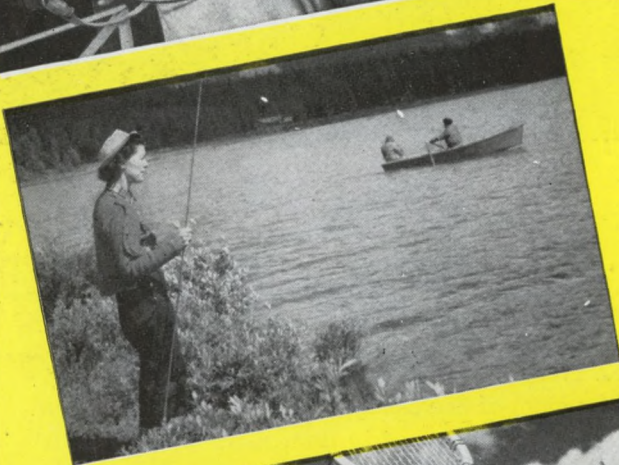
# Lens Luck



When you are happy, time passes all too quickly and your vacation at Jasper seems to go in the twinkling of an eye. What can you do to carry some of it back with you to the workaday world? You can take the health you have stored up and you have your memories. There's something else, though.

"Time flies over us," said Hawthorne, "but leaves its shadow behind." He might have been thinking of photography. Trap the shadows of those delightful hours on the film of your camera! Take them home in movies or stills, in black and white or color.

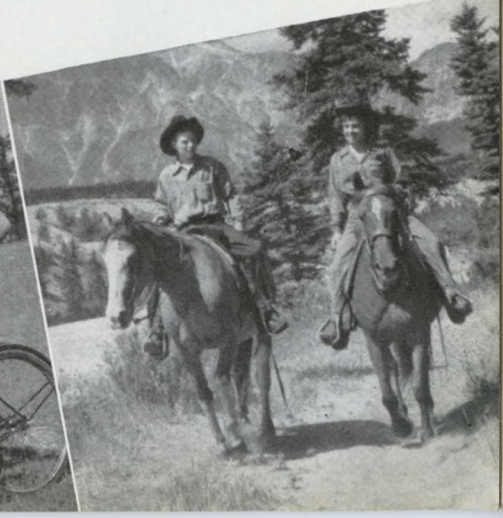
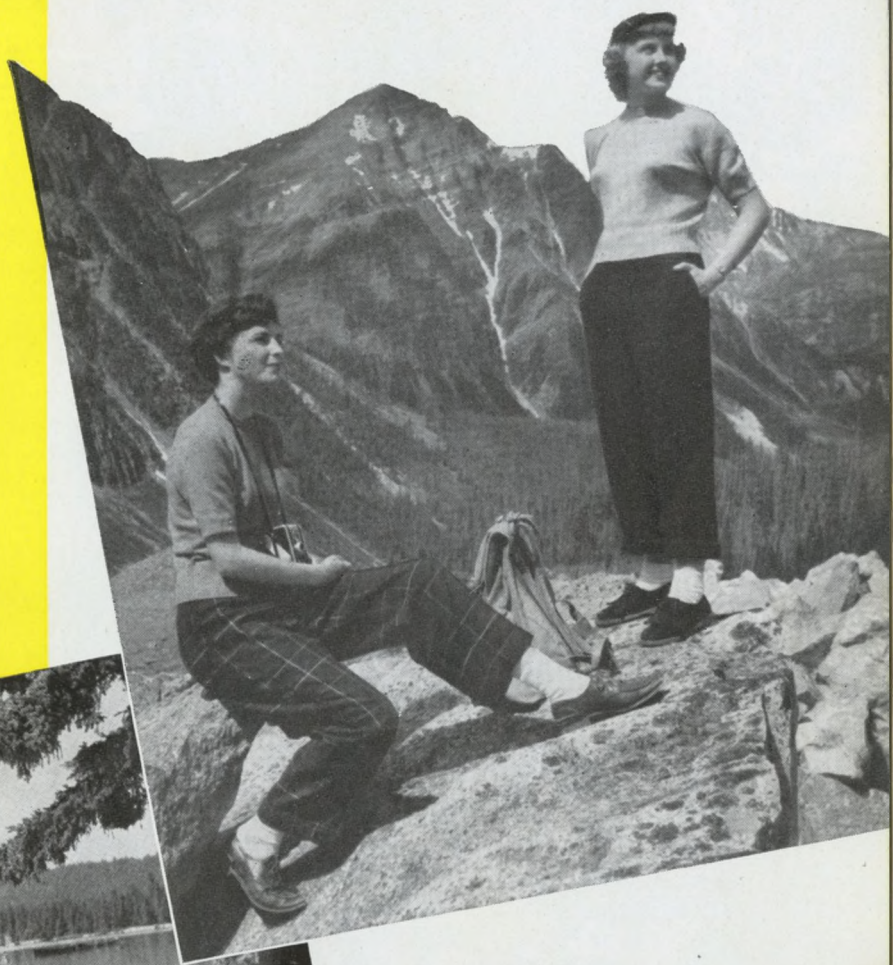
That hole where you got the birdie; the trout that won you the Maligne River Anglers Club button; somebody you know on horseback, drifting in a canoe, or just relaxing prettily against a wonderful background; the peaks and the glaciers; the busy beaver; the comical bear, the mettlesome moose or the shy deer, the high-stepping mountain sheep and goats—you'll want them all. Keep your camera handy and take Jasper home in your pocket.



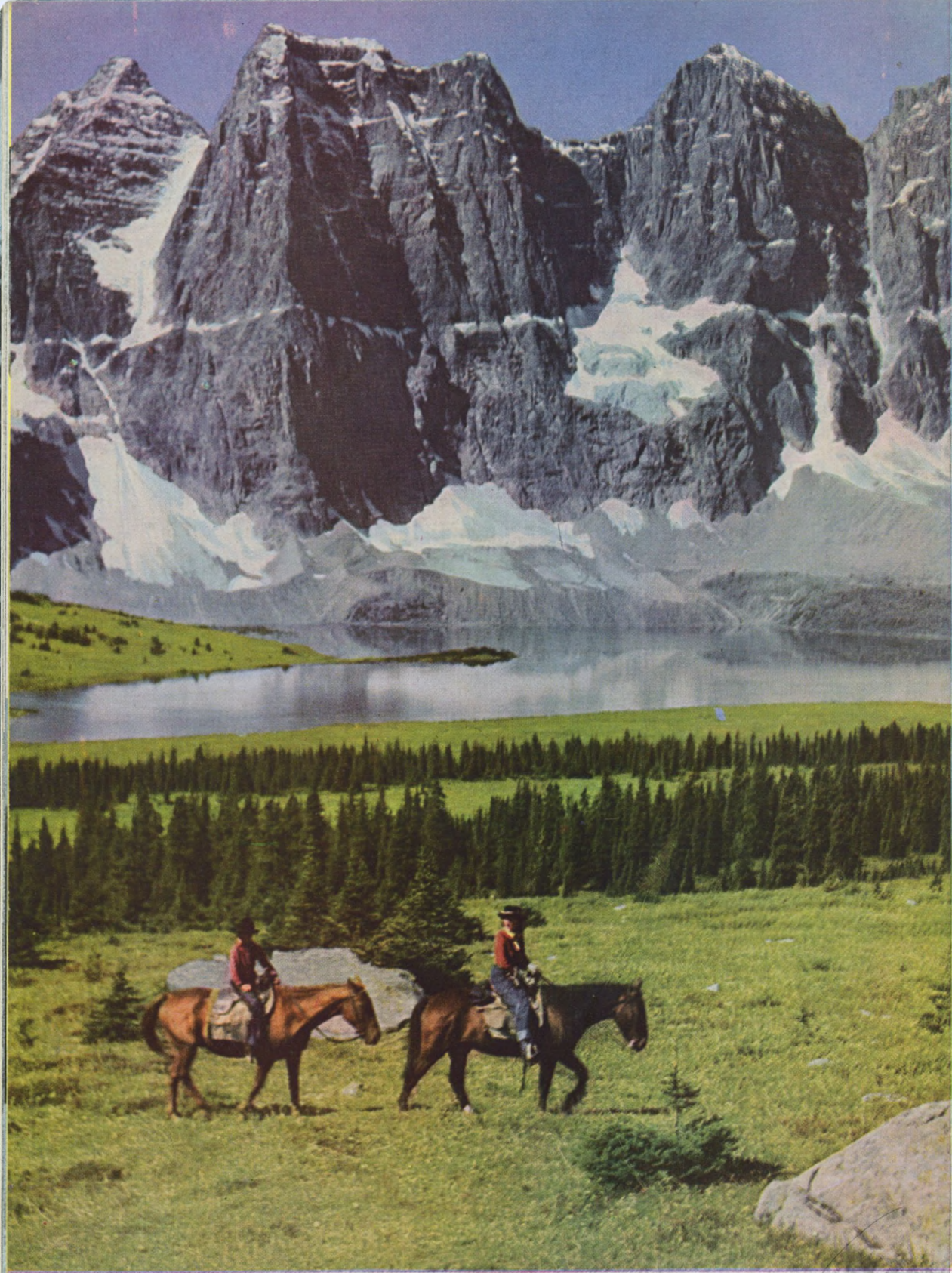


# *Car, Saddle or Shank's Mare*

Jasper is too big to be seen at a glance. It has to be explored. You can do this on foot and have it revealed to you slowly and in detail. You can take to the saddle and reach places inaccessible by automobile. If you are a cyclist, there is many a road and trail to lead you through its scenic wonders. If you like the panoramic view, a sure foot and a little daring will bring you to heights where Jasper in all its glory lies spread out below.







The majestic Ramparts rising above Amethyst Lakes in the Tonquin Valley.



# The Lure of the Trail

Even if they have never been on a horse, most people want to ride when they get to Jasper. Not many of them are Hopalong Cassidys or Roy Rogerses. But the ponies don't mind that: they take everybody in their stride. They're knowing critters, with a pretty good idea of human nature, and if the wrangler happens to be looking the other way when you mount from the wrong side, the ponies won't say anything. They are not all alike, of course, but you will have help finding one to suit your speed—high-spirited if you're experienced, benevolent if you're not.

Once in the saddle, you can really go places. You'll probably want to start with a short ride—say the seven-mile two-hour trip over the Buffalo Prairie Trail to Old Fort Point, which thrillingly opens up the Athabaska Valley to you. Then you'll graduate to Maligne Canyon or the Sawdust Trail, 12 miles each, riding time three hours. The Canyon is a spectacle you shouldn't miss, and the Sawdust Trail takes you through deep forest, by the shores of lakes and rivers and high enough up the slopes to give you that sense of size and grandeur we spoke about at the beginning of this book. Caledonia, Pyramid and Wabasso Lakes are the objectives of five-hour rides.

When you're well seasoned, you'll be ripe for a trip into the Tonquin Valley, where the jagged Ramparts rise above the Amethyst Lakes, or to Maligne Lake and back over the Skyline Trail. On these longer saddle trips, you will be comfortable in chalets and camps in the midst of mountain splendor at high altitudes.

*See page 29 for details of Saddle Trips.*



You will find the horse corral a friendly place.

The trail is the way to the "back country." ➡



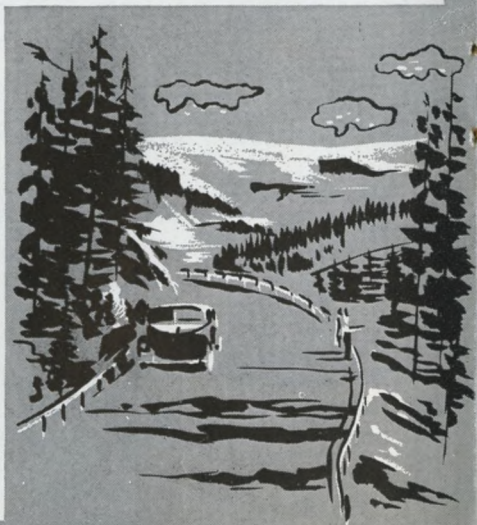


## *No Superlatives Required*

Hard as it is to be matter-of-fact in talking about a place like Jasper, we have avoided superlatives in this book. Coming to the Columbia Icefield, however, there is a great temptation to break loose.

It is giving the Icefield no more than it deserves to call it one of the wonders of the world.

Covering an area of more than 110 square miles, it is the largest and most impressive body of ice outside the Arctic Circle. Its average elevation between 9,000 and 10,000 feet, its loftiest peaks towering to 11,000 and 12,000, it is the roof of the Canadian Rockies and the geographical centre of the water system of a quarter of North America. Out of its massive glaciers spring streams that swell into mighty rivers carrying fertility to a vast terrain and pouring into three oceans.



This gigantic welter of ice and snow dwarfs everything. You can ride the glacier by snow-mobile or skis.



Mile-wide Saskatchewan Glacier, spreading six and a half miles down into the valley, sends waters to Hudson Bay and the Atlantic. Out of Athabaska Glacier go streams that travel 2,000 miles to the Arctic through the delta of the fabulous Mackenzie. Other waters find their way to the Columbia and the Pacific Ocean. No wonder they call it "Mother of Rivers."

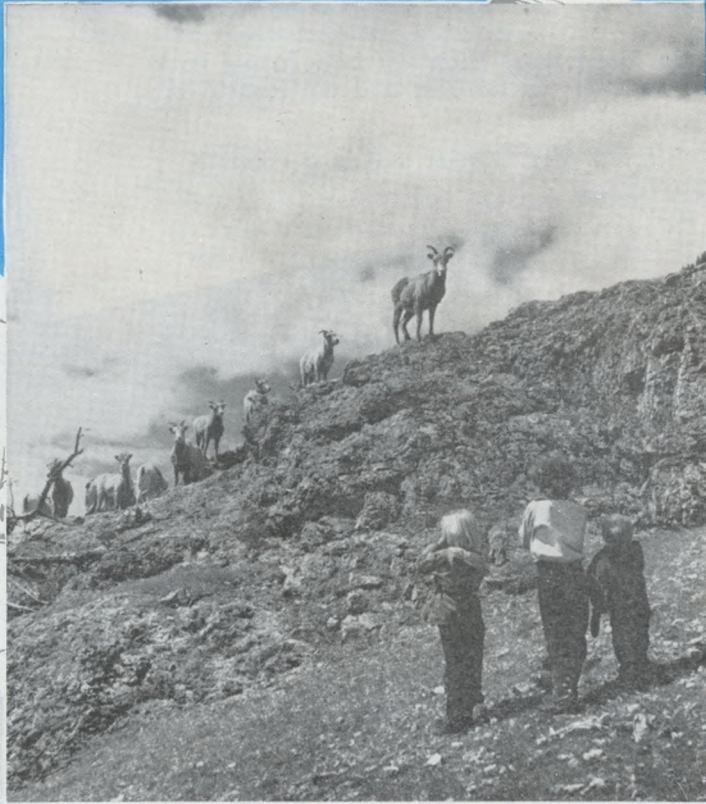
The 75-mile motor drive along the Jasper-Banff Highway from Jasper Park Lodge is a must for every visitor. The scenery is thrilling and the Icefield is the stupendous climax.

At the foot of the mighty sweep of Athabaska Glacier stands a comfortable chalet where you may stay and prolong your pleasure. From there you may explore the Icefield on foot, horse-back or snow-mobile, or enjoy spectacular summer skiing.



This great icefield is easy to reach by highway—  
the back-country by horse.



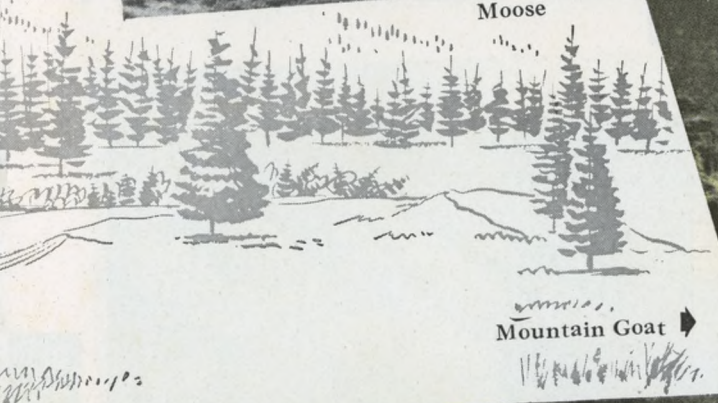
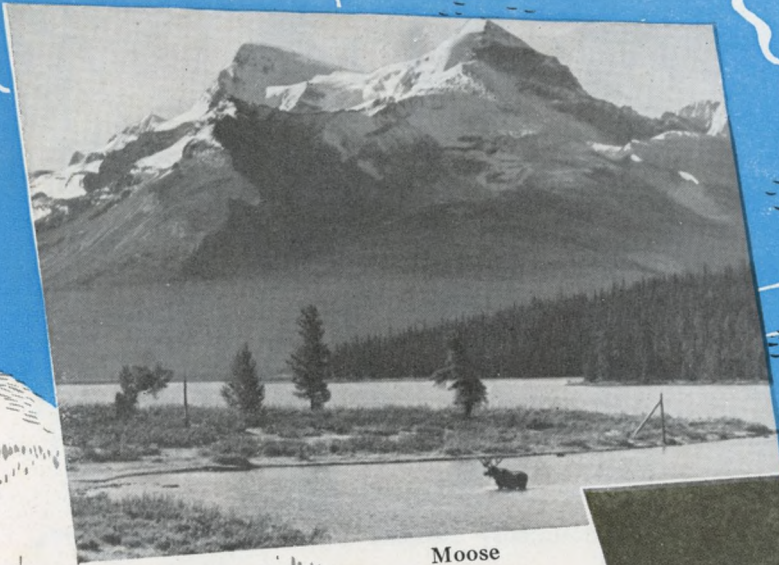


← Mountain Sheep

↙ Mule Deer







Moose

Mountain Goat →



Bear



Elk

Jasper's first citizens are its animals, the park being a wildlife sanctuary where only camera-shooting is allowed. Mule deer and comical bears are always on hand to greet visitors and pose for pictures. Harder to meet are moose and elk; the highstepping mountain goat and bighorn sheep, but patient hunting will bring them within range of your lens.





## Fighting Fish

On the Lower Maligne River, a few miles from Jasper Park Lodge, you will find the Government Fish Hatchery where hundreds of thousands of eggs are hatched every year and developed into fingerlings so that the lakes and streams of the Park may be well supplied with sporty trout.

The Hatchery is a fascinating place to visit, even if you're not an angler. If you are, you'll go to the waters where the fish come to maturity—the Amethyst Lakes and the Astoria River in the Tonquin Valley for Rainbowbows; Jacques Lake for Dolly Varden; Maligne River and Maligne Lake for Eastern Brook (Speckled) Trout. There are fish in plenty of other lakes and streams, too.

All the spots are easy to reach and the trout give you plenty of action.

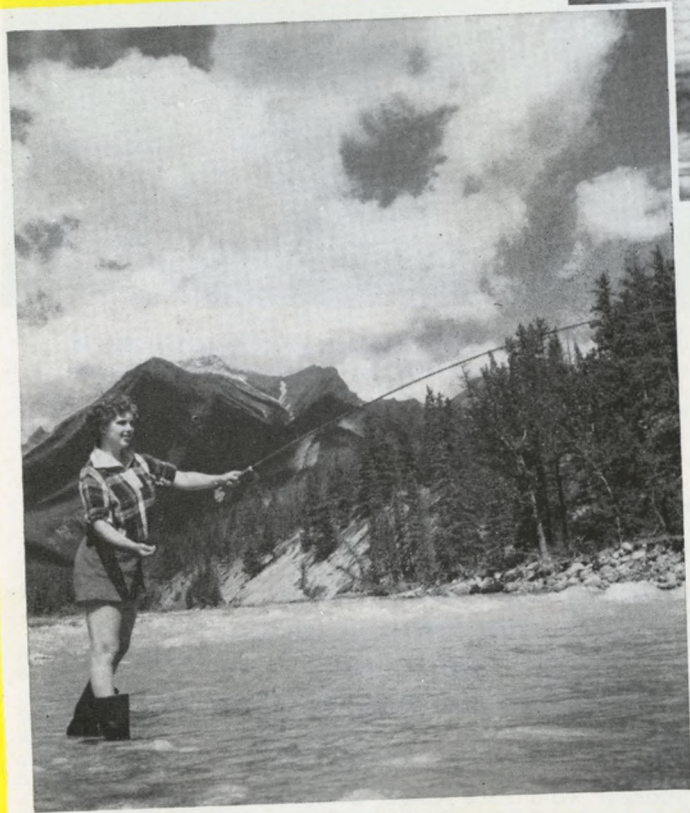
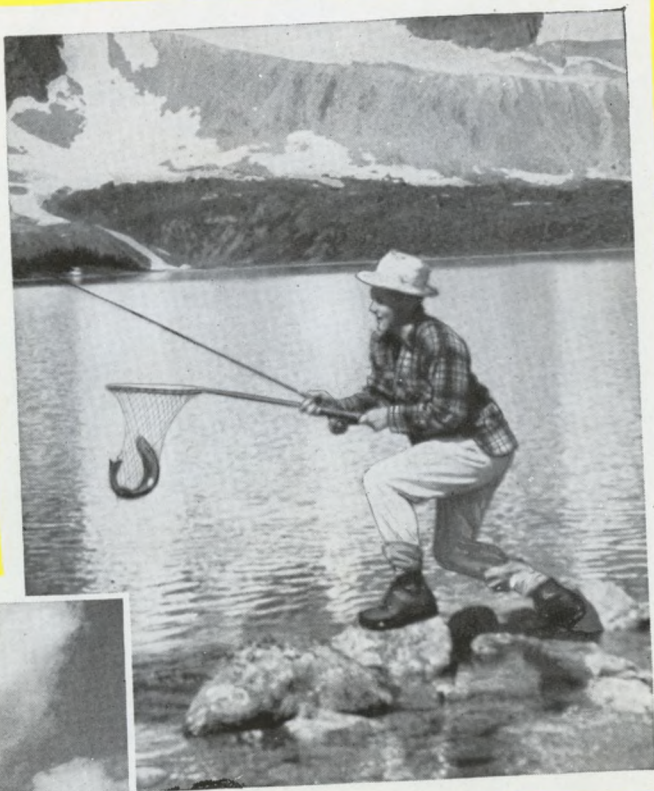
If you go to the Maligne area, you'll undoubtedly become a member of the Maligne River Anglers Club. A fish of a pound or more entitles you to the bronze button. The angler who catches the heaviest trout in the season gets a gold button to prove his championship.

A silver button goes to the second.

Happy landings!







Rainbow, Speckled, Dolly Varden and Lake Trout are plentiful in Jasper's waters and re-stocking is scientifically practised. Thousands of visitors call at the Government Fish Hatchery (left).

*Detailed information covering fishing will be found on page 25.*







Mount Robson, Monarch of the Rockies, altitude 12,972 feet, is in full view for many miles from the Canadian National lines.

## *Tallest of them All*

At Jasper you are only two short hours away by train from the highest peak in the Canadian Rockies. This is Mount Robson, which towers up just outside the west boundary of Jasper National Park over the Great Divide in British Columbia. Armored in eternal ice and snow, it is a glorious sight from the Canadian National Lines to Vancouver and Prince Rupert.

But its majesty is even more apparent from close range. On foot or on horseback, you may make your way through the Valley of a Thousand Falls, past the roaring Emperor Falls, around the great mountain to Berg Lake on the north side. Here three immense glaciers cling to Robson's flanks. From the most spectacular, Tumbling Glacier, great blocks of ice break off and hurtle into the shining lake to become icebergs.

Mount Robson Provincial Park is the centre of superb big game hunting. Accommodations are good and reliable guides, who know the territory as well as the palms of their hands, see that you get sport at its best.



## Details of Activities

### IN JASPER NATIONAL PARK AND AT JASPER PARK LODGE

Horse-back riding, mountain climbing, hiking, motoring, golfing, tennis, boating, canoeing, fishing, swimming, dancing, motion pictures, and table tennis are among the recreational attractions. Details of all activities are described in the following pages. Further information may be obtained at the Motor Transportation Desk or from "Fred Brewster's Rocky Mountain Camps" in the Main Building, Jasper Park Lodge.

#### SWIMMING POOL

With guests of the Lodge the swimming pool ranks as one of the most popular attractions. Constantly changing crystal-clear glacial water, filtered and heated before entering the pool, adds to the pleasure of a dip and ensures sanitary freshness. In attendance is a competent swimming instructor, with whom arrangements can be made to take lessons in swimming and diving. The use of the pool is given free to guests of the Lodge, but a charge of 25c each is made for the rental of bathing suits. Dressing rooms are equipped with showers.

#### GOLF

Arrangements for golfing on the Jasper Park Lodge Golf Course can be made at the Golf Club House, situated 300 yards from the Main Building. A Professional of the highest standing as player, instructor, and club maker is in attendance. Equipment can be either purchased or rented.

Rates for Golf	Per Person	Family Rates	
		First Person	Others (each)
Per round or per day . . .	3.00	3.00	3.00
Per week . . . . .	18.00	18.00	9.00
Per month . . . . .	60.00	60.00	30.00
Per season . . . . .	90.00	90.00	45.00

#### Caddie Fees

18 holes . . . . .	\$2.00
9 holes . . . . .	1.25

#### GOLF WEEK

August 31st to September 6th, 1952

For special All-inclusive Rates from all points in Canada and the United States, consult your nearest Canadian National Passenger Representative.

#### TENNIS

Four hard-surfaced courts are available to guests free of charge. Guests should bring their own racquets. Tennis balls are sold at the Novelty Shop.

#### TABLE TENNIS

In the Golf Club House.

#### BOATING

Canoeing on Lac Beauvert is a favoured pastime. Boats and canoes are available for rent at 50 cents per hour.

#### FISHING

Speckled trout fishing waters are found at Maligne Lake and Maligne River, as well as at Medicine Lake and Beaver Lake, where fighting Eastern Brook Trout, artificially propagated, await the angler.

Jacques Lake, situated between the Maligne and Rocky Rivers, offers Dolly Varden trout, Beaver Dam Creek (four miles from the Lodge), Wabasso Lakes and Buffalo Prairie (ten miles distant), and Hardisty Creek at Athabaska Falls (twenty-one miles away), are stocked with Rainbow trout.

Amethyst Lakes in the Tonquin Valley, abundantly supplied with Rainbow trout, offer excellent sport.

Chalets, boats and boatmen, are available. Arrangements for the journey to these lakes and chalets by automobile, motor boat, and saddle-horse, can be made at "Fred Brewster's Rocky Mountain Camps."

Fishing tackle of a limited variety may be either purchased or rented in the town of Jasper. Enquire at "Fred Brewster's Rocky Mountain Camps" in the Main Building.

#### LICENCE REQUIRED FOR FISHING

A license is required to fish the waters of Jasper National Park. This can be obtained from front office cashier, Jasper Park Lodge, or from the Park Wardens at a cost of \$2.25 per person for entire season, or \$1.00 for two months from date of issue.

Anglers must have licences in their possession while fishing.

### AUTOMOBILE SIGHTSEEING DRIVES AND OTHER MOTOR SERVICES

Arrangements can be made at the Motor Transportation Desk in the Main Building of Jasper Park Lodge for all scheduled and special motor trips.

Jasper Park Lodge owns and operates its own transportation system and its automotive equipment consists of luxurious passenger automobiles and buses. The chauffeurs, besides being experienced drivers, are well versed in the history and lore of the Park. They thus make thoroughly competent guides, whose knowledge and experience add much to the journeys along these historic trails.

Guests holding drive coupons are requested to present them at the Motor Transportation Desk as soon as possible after arrival in order to facilitate their trip arrangements.

Private touring cars will be operated on any regular drive, when cars are available without interrupting or interfering with regular services. Minimum charge: 5 full bus fares.

**Half fare for children under twelve years on all motor drives.**

**No passports required by U.S. citizens to enter Canada, but it would be helpful to carry some proof of United States' citizenship, such as a birth certificate or Voter's Registration Card.**

A friendly welcome awaits you at the Border and throughout the Dominion.

Canadian currency is now on the free market and its value in terms of U.S. dollars may fluctuate from day to day. Americans, if they so desire, may buy Bank Drafts, payable in Canadian funds, or Canadian currency from their own bankers in the United States. When exchanging U.S. dollars at Jasper Park Lodge, such funds will be converted at the current rate of exchange.



## SIGHTSEEING MOTOR DRIVES

*NOTE:—Starting point of all sightseeing drives—Main Entrance, Jasper Park Lodge.*

*The Station Agent at Jasper will make arrangements for railway patrons, who are not guests of the Lodge, to be taken from the station, in Jasper Park Lodge motor equipment, on any of the scheduled drives, Nos. 1 to 8, inclusive. Regular rates will apply.*

**Departure hours and schedules for these drives have been carefully planned to permit visitors to view without haste the scenic wonders of the Park.**

**No. 1: General Drive—Thirty-five miles return.** Motors leave the lodge at 9:30 a.m. and 2:30 p.m. **Time, approximately 3 hrs. Bus fare per person, \$4.00.** This drive embraces a wide variety of valley, lake, canyon, and mountain scenery and includes a visit to the Fish Hatchery and a side trip to see the bears. The route, after following the Athabaska River, skirts Lakes Annette and Edith before gradually ascending the roadway to Maligne Canyon. From this vantage point the tourist stands in awe before the snow-capped grandeur of lordly mountains and the mighty sweep of the Athabaska Valley, which loses itself in endless vistas of alpine beauty. Maligne Canyon, a tremendous gorge descending to a depth of 188 feet, and remarkable for its potholes, is a never-ending source of wonder and amazement. On the return journey the Athabaska River is followed to its junction with the Maligne River where a stop is made to view the Government Fish Hatchery; from here the route continues over the Athabaska River bridge to join the Main Highway to Jasper, where a glimpse is obtained of "the Raven", one of the largest totem-poles in existence. Continuing along to the foot of Pyramid Mountain and passing en route Lakes Patricia and Pyramid, the drive again runs through Jasper before terminating at the Lodge.

**No. 2: Glacier of the Angel (Mount Edith Cavell)—Forty-four miles return.** Motors leave the Lodge at 9:15 a.m., and 2:30 p.m. **Time, approximately 3 hours. Bus fare per person, \$4.00.** Offering excellent motoring, this drive by a course of wide-sweeping switchbacks reaches an altitude of nearly 2,000 feet above the floor of the valley and gives the tourist an ever-changing series of strikingly beautiful panoramas. The highway, terminating at the foot of the famous glacier, affords an excellent view of this vast field of living ice. *The highest point reached on this drive is 6,300 feet above sea level.* Light lunches and refreshments can be obtained at the Tea Room near the foot of the Glacier.

**No. 3: Miette Hot Springs and Fiddle River Canyon—Eighty miles return.** Motors leave the Lodge at 9:00 a.m. **Time, approximately 4 hours. Bus fare per person, \$6.00.** The route, after skirting the shore of Lake Mildred, follows the Athabaska River, which it crosses to join the Inter-Provincial Highway, whence it extends for miles down the Athabaska Valley to Jasper Lake and beyond to Punch Bowl Falls. A short stop is made to view this unique waterfall, and then the trip continues along the rim of the Fiddle River Canyon for another eleven miles before finally reaching the famous Miette Hot Springs. At this point, hot sulphur spring water, varying in temperature from 79 to 128 degrees F., comes boiling out of the mountain side. Motors will remain long enough to permit bathing in the pool. *The highest point on this drive is 4,510 feet above sea level.*

The Miette Hot Springs consist of three main springs, which issue from the rocks along the banks of Sulphur Creek. The springs, non-volcanic in nature, owe their heat to chemical action, caused by surface water coming in contact with certain minerals in the limestone rock formation. The combined flow of the three springs reaches a total of approximately 170,000 gallons every 24 hours.

*The Swimming Pool and the Steam Baths at Miette Hot Springs are operated by the National Parks Department.*

*The rates are:*

Swimming Pool—when bathing suit and towel are supplied by the Department: adults, 35c.; children, 25c. When bathing suit and towel are supplied by bather: adults, 25c.; children, 15c. Steam and Plunge Baths—50c. per person.

**No. 4: Columbia Icefield (Jasper-Banff Highway)—One hundred and fifty miles return.** Motors leave the Lodge at 9:00 a.m. **Time, approximately 7 hours. Bus fare per person, \$10.00. Minimum, 5 persons.** The drive follows the route of the Mount Edith Cavell Drive to a point beyond the crossing of the Astoria River, whence it continues along the valley of the Athabaska. From here the route penetrates through the very heart of the Canadian Rockies to the largest and most impressive icefield outside the Arctic Circle. With an estimated area of 110 square miles, the average elevation of this amazing icefield is between 9,000 and 10,000 feet, which because the waters of its melting glaciers travel thousands of miles to three oceans, the Atlantic, the Pacific, and the Arctic, has been beautifully named "Mother of Rivers". **Unquestionably, this is America's Greatest Scenic Drive.** *The highest point reached on this drive is 7,000 feet above sea level.*

This trip is also operated as an afternoon and evening drive, leaving the Lodge at 2:30 p.m. It is arranged for those who wish to see the wild animals which in the evening twilight come down from the mountains and forests to the rivers and streams along the route of this great highway.

**No. 5: Geikie Twilight Drive—25 miles return.** Motors leave the Lodge at 7:00 p.m. **Time, approximately 2 hours. Bus fare per person, \$3.00.** This drive, sometimes referred to as the Sleepy Hollow Drive, passes through the town of Jasper and proceeds along a beautiful road winding through a quiet valley with here and there a contrasting noisy waterfall tumbling down to join the Miette River; the route continues West following the Miette River along the base of Whistlers Mountain to Geikie.

**No. 6: Maligne Canyon—Medicine Lake (auto-motor boat)—40 miles return.** Motors leave the Lodge at 1:30 p.m. **Time, approximately 4½ hours. Cost per person, \$6.50.** The route is over the road to Maligne Canyon and beyond for fourteen miles to the lower end of Medicine Lake; at this point passengers are taken on a scenic motor-boat cruise across the lake. A unique feature of this lake is that, although thirty feet deep during the summer, it completely disappears through invisible outlets in the Fall of the year.

**No. 7: Maligne Canyon—Twelve miles return.** Motors leave the Lodge at 10:00 a.m. and 2:30 p.m. **Time approximately 1½ hours. Bus fare per person, \$2.00.** This canyon, into which the Maligne River plunges through a gorge 188 feet deep, ranks among the most extraordinary in the Canadian Rockies. The route lies over a gradually ascending roadway from which the tourist obtains magnificent views of lordly mountains and charming vistas of the Athabaska Valley. The fish hatchery on the lower Maligne River beyond Lake Edith is also of interest.



**No. 8: Punch Bowl Falls—"A Twilight Drive"**—Sixty miles return. Motors leave the Lodge at 7:00 p.m. Time, approximately 3 hours. Cost per person, \$3.50. The route, after skirting the shore of Lake Mildred, follows the Athabaska River, which it crosses to join the Inter-Provincial Highway, whence it extends for miles down the Athabaska Valley to Jasper Lake, and beyond to Punch Bowl

Falls and Valley. Affording a very wide variety of mountain scenery, this trip is highly recommended as an evening drive, for after sunset, animal life frequents the numerous lakes and streams in this region, and it is usually possible to see sheep, goats, deer, bears, moose, etc., from the motor-car. Return to the Lodge in ample time for dancing, bridge, etc.

## SPECIAL MOTOR SERVICES

**Medicine Lake—Beaver Lake—Lower Maligne River.** Provided arrangements are made at the Motor Transportation Desk before 9:00 p.m. the evening prior to departure, anglers who wish to fish these waters can leave Jasper Park Lodge at 8:00 a.m. and leave Medicine Lake on return at 5:00 p.m. For this service a charge of \$5.00 per person, minimum two persons, will be made. Should a party make the trip at any time other than the foregoing, an extra charge of \$5.00 for one person, and \$2.50 each for two or more persons, will be made. **If boats, guides, fishing tackle, etc., are required, notice must be given at "Fred Brewster's Rocky Mountain Camps" in the Main Building before 9:00 p.m. the evening prior to departure.**

**Maligne Lake—Medicine Lake.** One day combination return motor and launch trip to far end of Maligne Lake, cost \$24.00—see page 28 for details of this and other Maligne Lake trips.

**Picnic Parties**—By arrangement, special buses, when available, will be operated to picnic sites. Cost per person, \$1.00 for the round trip; minimum charge, \$10.00 per round trip.

By arrangement, touring cars, if available, can also be engaged for this service at special rates.

**Trips to Jasper**—In addition to the scheduled bus trips to Jasper, cars, when available, can also be obtained at the following rates:

One way—one to three persons, \$2.00, each additional person 50c.

**For motor coach service over the Columbia Icefield Highway between Jasper and Lake Louise, Banff, and Calgary, see page 37.**

Round trip—one to three persons, \$3.00, each additional person \$1.00.

Time, including shopping, not to exceed one hour for the round trip; extra waiting time will be charged for at the rate of \$5.00 per hour.

**A Shopping Bus** to Jasper and return operates daily (except Sunday) at 10:30 a.m. and 4:00 p.m. Cost, 50c. per person return.

**Theatre Bus** to Jasper every evening, except Sunday. Cost, 50c. per person return.

**TAXI SERVICE**—Taxi Service within the Lodge area, e.g., to the Golf Course, to the pony barns, or to and from the cabins: 25c. per person, minimum 50c. for the trip; to see the bears: 25c. per person, minimum \$1.00 for each trip.

During inclement weather, free motor transportation is provided between the cabins and the Main Building.

Free motor transportation is provided every Sunday morning for guests who wish to attend Church Service in Jasper. Buses leave the Main Entrance at 7:45, 10:00 and 10:45 a.m.

**Motor-car Services** are available at all times between 6:00 a.m. and 12:00 midnight, at the regular tariff rates. After midnight, a charge of \$2.00 will be made for each car movement within the Lodge area; outside the Lodge area, special rates will apply for any car movement between 12:00 midnight and 6:00 a.m.



There are 21 holes on the Jasper Park Lodge Golf Course, the championship 18-hole route being 6,700 yards long.



# THE MALIGNE DISTRICT

In advertising the following services the Canadian National Railways act only in the capacity of Agents; therefore, while highly recommending the Outfitters to guests, it does not assume any legal responsibility whatsoever relative to the services provided.

The Maligne district is one of the most interesting in the Park, not only on account of its remarkable canyon as referred to on Page 26, but because of its two beautiful lakes—Medicine and Maligne. The drive to the latter, with boat trip to the head of the lake, provides unforgettable glimpses of the beauty and grandeur of a great mountain world.

Medicine Lake, about 15 miles distant from Jasper Park Lodge and reached by automobile, is five miles long and a little over half a mile wide. Leaving Medicine Lake the road follows the Maligne River, now a tumultuous greenish-white stream of considerable size. Almost ten miles south one catches the first exciting glimpse of the shining tops of the snow peaks surrounding Maligne Lake. On the latter, near the outlet to the river, stands Maligne Lake Chalet. Before the Chalet and extending in a south-easterly direction for seventeen miles, with a breadth varying from two hundred yards to two miles and a shore line of some fifty miles, lies Maligne Lake, the largest glacial-fed body of water in the Canadian Rockies.

The vista from the lower end of Maligne Lake makes up a charming alpine picture, but one must take the boat trip beyond the Narrows, nine miles from the chalet, where the upper part of the lake is revealed, to realize the full glory of this masterpiece, and to understand the praise it has drawn from all mountain lovers who have been fortunate enough to see it.

Beginning with Mount Samson (a jagged peak of ten thousand feet facing the Chalet on the left), the altitude of the peaks forming the Maligne group (Mounts Charlton, Unwin, Warren, Mary Vaux, and Maligne) gradually increases until, in Mount Brazeau, it reaches eleven thousand, three hundred and eighty feet.

The mountains rise precipitously from the lake and are heavily laden with snow and ice. At the south-west end of the lake, farthest from the Chalet, lies a snowfield of considerable size, and leading in a southerly direction towards the Brazeau River district, along the western base of Mount Brazeau, is a high, broad snow pass, affording easy access to this intensely interesting neighbourhood. The mountains in the Maligne Lake district are admirably suited to both ice and rock climbing, and many comparatively easy climbs can be successfully undertaken by the amateur.

The mountains, meadows, and flowers of the alplands will prove of great interest to botanist and naturalist alike. Sheep, goats, caribou, moose, and deer frequent these pastures. The Opal Hills, facing the Chalet on the east, are the home of the sheep and the goat, while the mountain sides overlooking the lake, particularly those about the southeast, are used extensively by the mountain goat as a summer pasture.

## What to do at Maligne Lake

Ride or hike to Maligne Pass, to the top of the Opal Hills, or to the haunt of the caribou at the summit of Bald Mountain.

Take canoe, rowboat, or outboard motor-boat trips on the lake, also a scenic motor-boat trip to the upper end of Maligne Lake, 34 miles return.

Fish for speckled trout in Maligne Lake, Mona Lake, and Maligne River.

Arrangements can be made for summer skiing by applying to Fred Brewster's Rocky Mountain Camps Limited.

**All-Inclusive MOTOR and BOAT Trips from Jasper Park Lodge to Maligne Lake and Return**

**One-day Trip.** Leave Jasper Park Lodge at 8:00 a.m., motor to Medicine Lake, take motor-boat across the lake, and proceed by motor-car to Maligne Lake, arriving at 10:30 a.m. The return journey is over the same route, leaving Maligne Lake Chalet at 4:00 p.m., and arriving at Jasper Park Lodge at 6:30 p.m. This trip from The Lodge to the far end of Maligne Lake—100 miles return—includes transportation, luncheon and afternoon tea at Maligne Lake Chalet, and scenic motor-boat trip on Maligne Lake. Cost: \$24.00 per person.

**Overnight Trip.** Leave Jasper Park Lodge at 10:00 a.m., motor to Medicine Lake, take motor-boat across the lake, and proceed by motor-car to Maligne Lake, arriving at 12:30 p.m. The return journey is over the same route, leaving Maligne Lake Chalet the next afternoon at 1:30 p.m., and arriving at Jasper Park Lodge at 4:00 p.m. Cost of transportation, one night's accommodation, four meals at Maligne Lake Chalet, and scenic motor-boat trip on Maligne Lake: \$35.00 per person in canvas houses, and \$37.00 per person in the cabins.

**Special two-night visit.** Leave Jasper Park Lodge at 4:00 p.m., motor to Medicine Lake, take motor-boat across the lake, and proceed by motor-car to Maligne Lake, arriving at 6:30 p.m. One full day at Maligne Lake with morning scenic motor-boat trip. The return journey is over the same route, leaving Maligne Lake Chalet at 8:00 a.m., and arriving at Jasper Park Lodge at 10:30 a.m. Cost for transportation, two nights' accommodation, five meals at Maligne Lake Chalet, and scenic motor-boat trip on Maligne Lake: \$37.50 per person in canvas houses, and \$41.00 per person in the cabins.

Should a party wish to make the trip at any other than the regular times, an additional charge will be made.

## Boats and Canoes at Lakes in Maligne District

Canoes, skiffs, dinghies, and motor-boats, at Maligne, Medicine, Beaver, Mona and Lorraine Lakes can be hired at the following rates:

*Boat with trolling motor*—\$15.00 per day; \$7.50 per half day. This rate includes the services of a Guide to operate the boat.

*For fishing*—canoes, skiffs, and dinghies, without motors: 50c. per hour (minimum charge \$1.50); \$5.00 per day, at Medicine and Beaver Lakes. \$1.75 per half day; \$5.50 per day at Maligne, Mona and Lorraine Lakes.

Arrangements made for fishing boats and Guides at local rates.

Round trip boat fare on Medicine Lake (eight miles return) \$2.50 per person.

Round-trip boat fare on Maligne Lake (34 miles return): \$6.00 per person.

## MALIGNE RIVER ANGLERS' CLUB

Anglers visiting the Maligne area will have an opportunity, without additional expense, to qualify for membership in the Maligne River Anglers' Club, particulars of which can be obtained at "Fred Brewster's Rocky Mountain Camps", Jasper Park Lodge. An angler who catches a speckled brook trout weighing not less than a pound qualifies for membership in the Maligne River Anglers' Club and receives a bronze lapel button. The angler who catches the heaviest speckled brook trout receives a gold lapel button, emblematic of the championship of the Maligne River Anglers' Club. The angler taking the second heaviest trout receives a silver button.



## SADDLE TRIPS—TRAIL TRIPS—GUIDE SERVICE

*Official Outfitters—Fred Brewster's Rocky Mountain Camps Limited  
Office—Jasper Park Lodge*

Arrangements can be made at "Fred Brewster's Rocky Mountain Camps" in the Main Building, Jasper Park Lodge, or any Canadian National Railways office, for all scheduled and special short saddle trips, and for guide service.

Arrangements can also be made for hunting trips during September and October.

The horses, equipped with Mexican stock-saddle or English riding-saddle, are locally bred and of good type.

Every effort commensurate with trail conditions will be made to maintain scheduled times of departure and arrival.

It is very important that visitors who intend to hike or ride the trails bring with them suitable clothing, including riding or hiking boots, woollen stockings or socks, woollen jacket or sweater, heavy breeches, flannel or mackinaw shirt, slicker, gloves, and suitable hat or cap.

No responsibility will be assumed for the loss on the trail of valuables or personal equipment.

### GUIDE SERVICE

The management recommends that no mountain, saddle, or hiking trip be made without the services of a guide; parties who make trips without one do so at their own risk. The cost of a mounted guide is \$6.00 per half day, and \$10.00 per day. One guide is required for a party numbering up to five persons; an extra one, for more than five persons. Guide charges are pro rata according to the number in the party.

The guides are fully qualified, widely experienced, and thoroughly dependable.

### RATES FOR SADDLE HORSES

*Note: For a horse or guide one day consists of not more than nine (9) hours and not more than twenty (20) miles.*

Horses equipped with either Mexican stock-saddle or English riding-saddle: \$4.50 per half day, and \$6.50 per day. Mountain trips, \$7.00 per day. Special rate of \$55.00 per week for reserved horses.

### SADDLE TRIPS

*NOTE: Slickers are not provided by the Outfitter.*

**Saddle Trip No. 1: Jasper Park Lodge Sawdust Trail**—Graded to a breadth averaging from ten to fifteen feet and sufficiently wide for a party of three to ride abreast, this bridle path, rendered dustless by a generous application of soft sawdust, forms a vast circuit, with the Lodge itself as a centre. The trail leads through pine and fir forests, by lake shore and river bank, skirts the golf course, and ascends to the bench below Signal Mountain offering from its different vantage points ever-changing vistas of the charming Athabaska Valley. Unquestionably, this is the most beautiful and scenic twelve-mile horseback ride on the Continent. Riding time, 3 hours.

**Saddle Trip No. 2: Maligne Canyon**—The route is over the back trails away from the motor roads and follows the Athabaska Trail, traversing the entire length of Maligne Canyon. A beautiful, easy ride of 12 miles return. Riding time, 3 hours.

**Saddle Trip No. 3: Golf Course and Old Fort Point (Hudson's Bay Table Top)**—The route skirts the greater part of the golf course, proceeds up the Buffalo Prairie Trail to the top of the ridge and out on to Old Fort Point. This trip affords a splendid view of

the Athabaska Valley, the Lodge, Mt. Edith Cavell, and the mountains on both sides of the upper river. Distance, seven miles return. Riding time, 2 hours.

**Saddle Trip No. 4: Caledonia Lake**—Fourteen miles return. A small lake lying west of Jasper on a rocky bench above the Miette River, Caledonia Lake is reached by passing through Jasper and following the Miette road to Cabin Creek Bridge. Here the trail branches off and follows the left bank of Cabin Creek. Riding time, 4½ hours.

**Saddle Trip No. 5: Pyramid Lake**—Sixteen miles return. This trail leads the rider through Jasper, ascends the hill to the north, crosses Cottonwood Creek Valley, and then passes along the ridge above Pyramid Lake. Riding time, 5 hours.

**Saddle Trip No. 6: Buffalo Prairie-Wabasso Lake.** Twenty miles return. An interesting trail winding through beautiful scenery. Excellent fishing in the lake waters. Riding time, 5 hours.

**Saddle Trip No. 7: Maligne Lake and Sky Line Trail Trip**—For those who enjoy riding at a high altitude, the return trip from Maligne Lake over the Sky Line Trail offers a new and exhilarating experience. **If snow conditions permit—this trip will be operated between July 10th and August 31st.**

First day—leave Jasper Park Lodge at 10:00 a.m., motor to Medicine Lake, take motor-boat across the lake and proceed by motor-car to Maligne Lake, arriving at 12:30 p.m.

Second day—rest at Maligne Lake Chalet and take scenic motor-boat trip to the upper end of Maligne Lake (34 miles return).

Third day—leave Maligne Lake Chalet at 9:00 a.m. with guide and saddle-horse, cross Maligne River via the saddle horse bridge, follow the Shovel Pass Trail over the Northeast shoulder of Bald Mountain to the Evelyn Creek ford and proceed up the long, easy slope to the summit of Little Shovel Pass at timber line. From the summit of Little Shovel Pass the rider gets a splendid view of the four miles of alpland, to be traversed before making the last climb to the summit of Big Shovel Pass (8,000 ft.). On the banks of a small mountain stream between the passes a stop is made for lunch. An easy descent across the shale slopes brings the rider to the overnight camp at Shovel Pass—a distance of 14 miles.

Fourth day—the route leads upward from Big Shovel Pass to the Skyline of the Maligne Range and for more than two miles maintains an altitude of eight thousand feet. The high altitude and peculiar location of the trail offers the rider in clear weather a magnificent view of the mountains in all directions. This is, beyond doubt, the most comprehensive panorama obtainable from a saddle, and is comparable to that of the Grand Canyon of Arizona. From the Skyline the following mountains are clearly visible in the distance, Mount Robson, the Clemenceau Group, Mount Columbia and Mount Alberta in the Icefield Group, and the Maligne Group. After a short stop for lunch in the basin at the rear of Tekarra Peak, the rider continues around the east and north base to the top of Signal Mountain, which overlooks Jasper Park Lodge and the Athabaska Valley. The descent from Signal Mountain to the Lodge is made over the regular Signal Mountain Trail.

This is a four-day trip. Cost, including boat trip on Maligne Lake and Canvas House accommodation at Maligne Lake Chalet, \$114.00 per person; for cabin accommodation, \$118.00 per person. Minimum, 4 persons.



## SADDLE TRIPS—TRAIL TRIPS—GUIDE SERVICE (cont'd.)

### *Saddle Trip No. 8: Wabasso Lake and Skyline Trail Trip—Fishing and Scenic—*

First day—leave Jasper Park Lodge at 8:30 a.m. with guide and saddle-horse, ride ten miles to Wabasso Lake, fish for native Rainbow trout approximately four hours, and ride upward into Shovel Pass Camp for overnight.

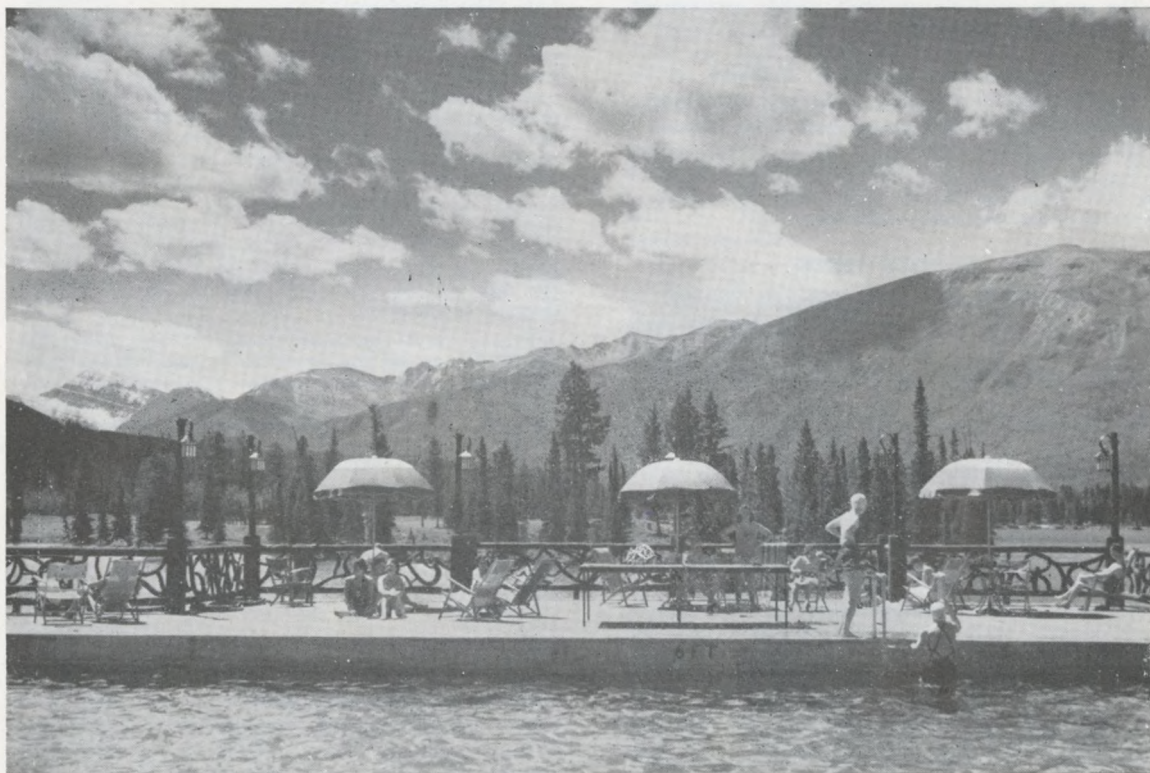
Second day—leave Shovel Pass Camp and ride up-

ward to the Skyline of the Maligne Range. The location of the trail offers the rider a magnificent view of the mountains in all directions. A stop for lunch is made in the Tekarra Basin; the trail then continues around Signal Mountain and descends into the valley where a car takes the riders to Jasper Park Lodge.

This is a two-day trip. All-inclusive cost, \$60.00 per person. Minimum, 3 persons.

### JASPER PARK LODGE GOLF COURSE

Hole No.	Name of Hole	Par	Yards	Hole No.	Name of Hole	Par	Yards
1	First	4	395	10	The Maze	5	495
2	Old Man	5	485	11	Pyramid	4	395
3	Signal Dip	4	425	12	Tete Jaune	3	175
4	Cavell	3	245	13	Grande Allee	5	595
5	Miette	5	470	14	Lac Beauvert	4	385
6	Whistlers	4	410	15	The Bad Baby	3	150
7	Colin's Clout	3	185	16	The Bay	4	390
8	Tekarra's Cut	4	450	17	The Climber	4	375
9	Cleopatra	3	215	18	Home	4	480
Par—71				Yards—6700			



The Jasper Park Lodge heated, outdoor pool on the shore of Lac Beauvert.



## TONQUIN VALLEY

Among the many beauty spots in the Canadian Rockies, none is more outstanding than the Tonquin Valley and that splendid range of mountains which rises along the spiral ridge of the continent from Mount Fraser northward, on the western boundary of Jasper National Park.

Tonquin Valley lies verdant, wide and open, high up on the shoulders of the great ridge that forms the Divide at an elevation of 6,450 feet. Brilliant masses of wild flowers, the vivid greens of the coarse grass, and the dark velvety hue of pines, give the valley a smiling loveliness, which contrasts with and softens the unrelieved majesty of the black and jagged peaks. On every hand, too, are signs of wild life. Its waters are famous for splendid Rainbow trout fishing.

Near the southern end of the valley is a beautiful sheet of water three miles long and about a mile wide, divided by a rocky promontory into two parts, forming what are known as the Amethyst Lakes. Their waters are pale in color with amethyst shadows from the sides, a color probably due to vegetation, accentuated when seen from a height, which has given them their names.

Forming a great arc from southwest to northwest, the Ramparts stretch along the western side of the valley without a sign of vegetation to relieve their rugged majesty. At all hours the Ramparts are impressive, but they are most splendid at sundown.

This beautiful valley is second to none in its interest to the angler, the alpinist, and the photographer.

The main trail to the Tonquin Valley is in from View Point, the latter being sixteen miles from Jasper on the Cavell motor road. The route is along the northern slopes of Mount Sorrow to Verdant Creek. Crossing the latter, it traverses the base of the northeast corner of Throne Mountain and, at a distance of some four miles from the highway, crosses the Astoria River. The trail then follows the northwestern bank of the Astoria for two and one-half miles before swinging to the right. After a very short climb to open country, it crosses the alplands to the Amethyst Lakes, a distance of three and one-half miles.

### Transportation Schedule for Tonquin Valley Operates Every Third Day in July and August

Leave Jasper Park Lodge by motor-car and drive to View Point at the lower end of Cavell Lake, where guides, saddle-horses, and pack-horses are stationed to complete the trip. Commencing July 1st, ingoing trips leave Jasper Park Lodge 9:30 a.m. first day and arrive Tonquin Valley Camp at 4:00 p.m. same day; leave Tonquin Valley Camp 9:30 a.m. third day and arrive Jasper Park Lodge at 4:00 p.m., e.g., leave Jasper Park Lodge July 1st, 4th, 7th, etc., and leave Tonquin Valley Camp July 3rd, 6th, 9th, etc. Luncheon is taken on the trail. Cost, for transportation by motor-car and saddle-horse, also luncheons on the trail: \$42.00 for the return trip. **Charges at Tonquin Valley Camp are Extra.**

Distance from Jasper, 26 miles.

### All-Inclusive Three-day Trip to Tonquin Valley

Cost for round-trip transportation and accommodation at Tonquin Valley Camp, \$63.00 per person.

Tonquin Valley Camp is open for Spring skiing during March, April and May. For full information write to "Fred Brewster's Rocky Mountain Camps Limited", Jasper, Alberta.

## ACCOMMODATION AT CHALETS

*These chalets are operated by the Official Outfitters, "Fred Brewster's Rocky Mountain Camps Limited". Reservations can be made direct or through the Manager of Jasper Park Lodge.*

**Maligne Lake Chalet**, elevation 5,500 feet, situated on Maligne Lake at the outlet to Maligne River, comprises a central building 25' x 40', containing a living-room with big, open fireplace, a dining-room with a seating capacity of 30 persons, and a well-equipped kitchen. Along the front, and on one side, stretches a spacious, screened-in veranda from which visitors get a splendid view of the lake.

Sleeping accommodation at Maligne Lake Chalet is provided in a four-room cabin, individual cabins, and in heated canvas houses; accommodation for 30 persons.

*The Canvas Houses* have permanent wooden frames and floors, and 6 foot walls. Each is separately heated, and amply lighted. The furnishings are similar to those of the four-room cabin, and include bureau, two chairs, grass rug, bedside mats, washstand, and two comfortable single beds.

Complete bath and toilet facilities are provided in a separate building.

Comfortable beds and plain but appetizing meals, guarantee the trail rider, angler, and other visitors an enjoyable stay.

**Shovel Pass Camp**, elevation 6,800 feet, located in Shovel Pass basin at timber line, is of sound construction, and provides comfortable accommodation for eight persons. Alpland hiking, rock climbing, mountain game, and flora. From this camp the visitor gets an excellent view of the Athabaska and Tonquin Valleys, also of the Rampart Range including Mount Geikie, of the Whirlpool Valley as far as the Continental Divide, and of the Columbia Icefield far away to the south.

**Tonquin Valley Camp**, elevation 6,500 feet, situated on the Amethyst Lakes at the base of the Rampart Range, comprises a central log building containing dining-room and kitchen. Comfortable sleeping accommodation is provided in floored and heated canvas houses; each is furnished with two single beds, washstand, mirror, stove, etc.

Fishing boats can be rented for \$2.00 per half day, \$3.50 per day.

## RATES AT CHALETS AND CAMPS

(American Plan—including meals)

*Tonquin Valley Camp is open from July 1st to August 31st. Maligne Lake Chalet remains open from June 15th to September 10th. Shovel Pass Camp is open from July 10th to August 31st. Provided sufficient notice is given, parties who wish to visit these camps before or after the regular season can make arrangements to do so.*

	Per Day	Per Week
Tonquin Valley Camp .....	\$12.00	\$80.00
Shovel Pass Camp .....	8.00	
Maligne Lake Chalet:		
Cabin Room .....	14.00	93.00
Heated Canvas Houses .....	12.00	80.00

Motor-boat service on Maligne Lake (34 miles return) \$6.00 per passenger.







# WHAT TO WEAR

**AT THE LODGE**—Let your taste be your guide. Wear what you like, but you'll find sports and lounging clothes best for relaxation.



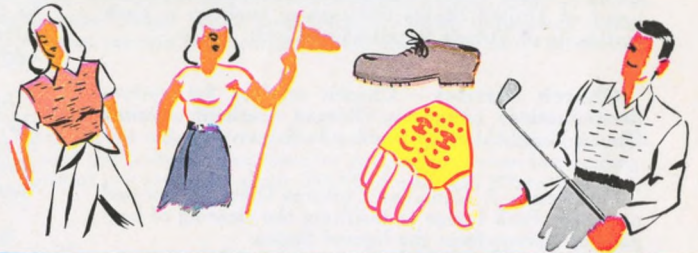
**FOR MOTORING**—A medium weight coat or wrap is always useful. So are sun glasses. Wear low-heeled shoes unless you just want to sit in the car when you reach a place worth exploring.



**FOR RIDING**—You can get along without boots or jodhpurs or other special riding togs. Breeches or "levis" are a good idea if you have them. Don't forget a sweater or a warm shirt.



**FOR GOLF**—What you wear on the course at home. Skirt or slacks, short-sleeved sweater; the proper shoes and gloves.



**FOR DAY TIME**—That depends on the weather and what you're doing. Suit yourself . . . Just be comfortable.



**FOR EVENING**—Fuss if you like, it's up to you. Many do—many don't. The only formality at Jasper Park Lodge is that men must wear coat or jacket with tie for dinner, and during the evening in the Main Lodge. Come prepared for cool mountain evenings.





## JASPER PARK LODGE—General Information

TIME—Jasper Park Lodge follows Mountain Standard Time  
Distance from Station: 4½ miles. Bus Fare: 50c per person each way.

Altitude—3,470 feet.

**Baggage—Incoming Baggage:** In order to avoid delay, baggage should be checked from starting point direct to Jasper Park Lodge. Guests are requested to present their baggage checks to the Lodge Porter immediately on arrival at Jasper Station.

**Outgoing Baggage:** Guests who wish to check baggage should present rail tickets to the Head Porter two hours before the departure of their trains. Those who have only hand baggage to check should secure tags from the Head Porter.

**Banks**—The Imperial Bank of Canada maintains a branch office in Jasper.

**Barber Shop, Shoe Shine Parlour, and Beauty Parlour** are located in the Main Building.

**Bicycles**—Available for rental.

**Camera Supplies**—See "Film Developing Service" and "Novelty Shop".

**Canadian Immigration Requirements**—United States citizens do not require a passport to enter Canada, but it would be helpful for them to carry some proof of United States citizenship, such as a birth certificate or Voter's Registration Card.

**Church Services**—Church services for various denominations (Anglican, Roman Catholic, United Church) are held every Sunday in Jasper.

**Customs**—A Canadian Customs Officer is located at Jasper Park Lodge to facilitate the clearing of baggage of visitors from the United States.

**Dancing**—The Lodge orchestra provides dinner and evening concerts, also dance music from 9 to 12 o'clock every night except Sunday.

**Electric Current**—A.C. 110-115 volts, 60 cycles, single phase. Outlets for electric razors are obtainable at Front Office.

**Express Service**—Canadian National Express, represented at Jasper, provides express service for shipments to and from all points in Canada, United States, and Great Britain.

**Film Developing Service**—Films left at the Novelty Shop before 9:00 a.m. will be returned the same day at 6:30 p.m.

**Laundry**—One-day service.

**Library**—A Lending Library is operated in connection with the Specialty Shop.

**Meal Hours**—Breakfast 7:00 a.m. to 9:30 a.m.  
Luncheon 12:00 noon to 2:00 p.m.  
Dinner 6:00 p.m. to 8:00 p.m.  
Snackroom open from 10:00 a.m. to midnight.

**Medical Service**—The services of a physician are available at all times, while a graduate nurse is in constant attendance.

**Money Orders**—Money Orders are sold at the Front Office.

**Motion Pictures**—A motion picture entertainment is given in the ballroom from 7:30 to 8:30 o'clock every evening, except Sunday.

**Novelty Shop**—A complete line of souvenirs, post cards, camera supplies, coloured glasses, etc., can be purchased at the Novelty Shop, operated in connection with the CIGAR and NEWS STAND. See also "Specialty Shop".

**Passenger Representative**—A Canadian National Railways Passenger Representative is located at the Lodge. He will assist guests in all matters pertaining to tickets, train and boat reservations, etc.

**Royal Mail Service**—A Post Office is located in the Main Building and a Daily Royal Mail service is provided to and from Jasper Park Lodge. Mail should be addressed in care of Jasper Park Lodge Post Office, Alberta. Guests are requested to leave their forwarding address before departure.

**Safety Deposit Boxes**—Safety Deposit Boxes for the safe keeping of money and valuables are available to guests; apply at the Front Office. We cannot accept responsibility for money or articles not deposited therein.

**Specialty Shop**—An up-to-date Specialty Shop, located in the Main Building, carries a full line of imported woollen goods, handwoven articles, blankets, china, costume jewellery, ladies' sportswear, and an exclusive line of gentlemen's sportswear, sweaters, socks, ties, etc. See also "Novelty Shop".

**Telegrams**—Canadian National Telegraphs, connecting with the Western Union Telegraph Co., maintains an office at the Lodge. A complete, world-wide telegraph and cable service as well as a telegraphic money order service is available. From the leading exchanges of the world come regularly the latest market reports on stocks, bonds, and commodities.

**Telephones**—Long Distance Telephone connections can be made direct from all bedrooms.

**Temperature**—The average daytime temperature ranges from 65 to 75 degrees F. The nights are always cool.

**U. S. Funds**—Are accepted in payment of Hotel Accounts at the current rate of exchange.

**Valet**—Ladies' and gentlemen's valet service.



## ALL-EXPENSE TOURS

All-Expense Tours, covering stays of one to four days at Jasper Park Lodge have been so planned that purchasers may cover the most ground in the least possible time and at the least expense. They include a selection of the most popular sightseeing motor drives (for complete description see page 26), **but do not include rail transportation to and from Jasper, or motor coach fares between Jasper and Columbia Icefield, Lake Louise, Banff, and Calgary.**

The costs for All-Expense tours are based on the **minimum rates** for hotel room and meals. If **superior type** of accommodation is desired, give full particulars to your nearest Canadian National Railways' Representative, who will obtain quotation and reservation from the Manager of Jasper Park Lodge.

All-Expense Tours are arranged for those arriving at, and departing from, Jasper Park Lodge as follows:

Tours	Arriving via	Departing via
11 to 14A	Trains 1, 2, 3, or 4.	Trains 1, 2, 3, 4, or Prince Rupert Gateway.
21 to 24A	Trains from Prince Rupert.	Trains 1, 2, 3, or 4.
31 to 34	Trains 1, 2, 3, or 4.	Motor coach to Lake Louise, Banff, etc.
41 to 44	Motor coach from Lake Louise, Banff, etc.	Trains 1, 2, 3, 4, or Prince Rupert Gateway.

### TOURS NO. 11-14A INCLUSIVE

For the benefit of guests arriving at Jasper Park Lodge via trains 1, 2, 3 or 4 and departing via trains 1, 2, 3, 4, or Prince Rupert Gateway via train 195.

- TOUR No. 11** — **One day visit**—Covers American Plan accommodation at Jasper Park Lodge, the 44-mile motor drive to Mount Edith Cavell, as well as bus transfer between the station and the Lodge. Open time for golf, tennis, horse-back riding, swimming, etc. Cost per person: without private bath, single \$18.50, double \$16.00; with private bath, single \$20.50, double \$19.00.
- TOUR No. 12** — **Two day visit**—Covers American Plan accommodation at Jasper Park Lodge, 80-mile drive to Miette Hot Springs, the General Drive, the 44-mile motor drive to Mount Edith Cavell, as well as bus transfer between the station and the Lodge. Open time for golf, tennis, horse-back riding, swimming, etc. Cost per person: without private bath, single \$42.00, double \$37.00; with private bath, single \$46.00, double \$43.00.
- TOUR No. 12A**—**Two day visit**—Covers American Plan accommodation at Jasper Park Lodge, General Drive, the famous Columbia Icefield Drive, the 44-mile motor drive to Mount Edith Cavell, as well as bus transfer between the station and the Lodge. Open time for golf, tennis, horse-back riding, swimming, etc. Cost per person: without private bath, single \$46.00, double \$41.00; with private bath, single \$50.00, double \$47.00.
- TOUR No. 13** — **Three day visit**—Covers American Plan accommodation at Jasper Park Lodge, 80-mile drive to Miette Hot Springs, the famous Columbia Icefield Drive, the General Drive, as well as bus transfer between the station and the Lodge. Open time for golf, tennis, horse-back riding, swimming, etc. Cost per person: without private bath, single \$61.50, double \$54.00; with private bath, single \$67.50, double \$63.00.
- TOUR No. 13A**—**Three day visit**—Covers American Plan accommodation at Jasper Park Lodge, the General Drive, the famous Columbia Icefield Drive, 80-mile drive to Miette Hot Springs, the 44-mile motor drive to Mount Edith Cavell, as well as bus transfer between the station and the Lodge. Open time for golf, tennis, horse-back riding, swimming, etc. Cost per person: without private bath, single \$65.50, double \$58.00; with private bath, single \$71.50, double \$67.00.
- TOUR No. 14** — **Four day visit**—Covers American Plan accommodation at Jasper Park Lodge, the General Drive, the 44-mile motor drive to Mount Edith Cavell, 80-mile drive to Miette Hot Springs, the famous Columbia Icefield Drive, as well as bus transfer between the station and the Lodge. Open time for golf, tennis, horse-back riding, swimming, etc. Cost per person: without private bath, single \$79.00, double \$69.00; with private bath, single \$87.00, double \$81.00.
- TOUR No. 14A**—**Four day visit**—Covers American Plan accommodation at Jasper Park Lodge, the General Drive, the famous Columbia Icefield Drive, the 44-mile motor drive to Mount Edith Cavell, 25-mile drive to Geikie, 80-mile drive to Miette Hot Springs, as well as bus transfer between the station and the Lodge. Open time for golf, tennis, horse-back riding, swimming, etc. Cost per person: without private bath, single \$82.00, double \$72.00; with private bath, single \$90.00, double \$84.00.



## TOURS NO. 21-24A INCLUSIVE

For the benefit of guests arriving at Jasper Park Lodge via train from Prince Rupert, and departing via train for the East or West.

- TOUR No. 21** —**One and a half day visit**—Covers American Plan accommodation at Jasper Park Lodge, the General Drive, Mount Edith Cavell Drive, as well as bus transfer between the station and the Lodge. It also permits open time for golf, tennis, horse-back riding, swimming, etc. Cost per person: without private bath, single \$26.50, double \$24.00; with private bath, single \$28.50, double \$27.00.
- TOUR No. 21A**—**One and a half day visit**—Covers American Plan accommodation at Jasper Park Lodge, the General Drive, the famous Columbia Icefield Drive, the Mount Edith Cavell Drive, as well as bus transfer between the station and the Lodge. It also permits open time for golf, tennis, horseback riding, swimming, etc. Cost per person: without private bath, single \$36.50, double \$34.00; with private bath, single \$38.50, double \$37.00.
- TOUR No. 22** —**Two and a half day visit**—Covers American Plan accommodation at Jasper Park Lodge, the General Drive, Miette Hot Springs Drive, the famous Columbia Icefield Drive, as well as bus transfer between the station and the Lodge. It also permits open time for golf, tennis, horseback riding, swimming, etc. Cost per person: without private bath, single \$52.00, double \$47.00; with private bath, single \$56.00, double \$53.00.
- TOUR No. 22A**—**Two and a half day visit**—Covers American Plan accommodation at Jasper Park Lodge, the General Drive, the famous Columbia Icefield Drive, Miette Hot Springs Drive, the Geikie Twilight Drive, the Mount Edith Cavell Drive, as well as bus transfer between the station and the Lodge. It also permits open time for golf, tennis, horseback riding, swimming, etc. Cost per person: without private bath, single \$59.00, double \$54.00; with private bath, single \$63.00, double \$60.00.
- TOUR No. 23** —**Three and a half day visit**—Covers American Plan accommodation at Jasper Park Lodge, the General Drive, Mount Edith Cavell Drive, Miette Hot Springs Drive, the famous Columbia Icefield Drive as well as bus transfer between station and the Lodge. It also permits open time for golf, tennis, horseback riding, swimming, etc. Cost per person: without private bath, single \$69.50, double \$62.00; with private bath, single \$75.50, double \$71.00.
- TOUR No. 23A**—**Three and a half day visit**—Covers American Plan accommodation at Jasper Park Lodge, the famous Columbia Icefield Drive, the Miette Hot Springs Drive, the Mount Edith Cavell Drive, the Geikie Twilight Drive, the General Drive, as well as bus transfer between the station and the Lodge. It also permits open time for golf, tennis, horseback riding, swimming, etc. Cost per person: without private bath, single \$72.50, double \$65.00; with private bath, single \$78.50, double \$74.00.
- TOUR No. 24** —**Four and a half day visit**—Covers American Plan accommodation at Jasper Park Lodge, the General Drive, Mount Edith Cavell Drive, Miette Hot Springs Drive, the famous Columbia Icefield Drive, as well as bus transfer between the station and the Lodge, with additional open time for golf, tennis, horseback riding, swimming, etc. Cost per person: without private bath, single \$83.00, double \$73.00; with private bath, single \$91.00, double \$85.00.
- TOUR No. 24A**—**Four and a half day visit**—Covers American Plan accommodation at Jasper Park Lodge, the famous Columbia Icefield Drive, the Miette Hot Springs Drive, the Mount Edith Cavell Drive, the Geikie Twilight Drive, the General Drive, as well as bus transfer between the station and the Lodge. It also permits open time for golf, tennis, horseback riding, swimming, etc. Cost per person: without private bath, single \$86.00, double \$76.00; with private bath, single \$94.00, double \$88.00.

## TOURS NO. 31-34 INCLUSIVE

For the benefit of guests arriving at Jasper Park Lodge via train from the East or West, and departing via motor bus to Lake Louise, Banff, Calgary, etc.

- TOUR No. 31** —**One day visit**—Covers American Plan accommodation at Jasper Park Lodge, the "Twilight Drive" to Punch Bowl Falls, as well as transfer from the station to Lodge. It also permits open time for golf, tennis, horseback riding, swimming, etc. Cost per person: without private bath, single \$15.25, double \$12.75; with private bath, single \$17.25, double \$15.75.
- TOUR No. 32** —**Two day visit**—Covers American Plan accommodation at Jasper Park Lodge, the General Drive, Mount Edith Cavell Drive, "Twilight Drive" to Punch Bowl Falls, as well as bus transfer from the station to Lodge. It also permits open time for golf, tennis, horseback riding, swimming, etc. Cost per person: without private bath, single \$36.75, double \$31.75; with private bath, single \$40.75, double \$37.75.
- TOUR No. 33** —**Three day visit**—Covers American Plan accommodation at Jasper Park Lodge, the General Drive, Mount Edith Cavell Drive, Miette Hot Springs Drive, as well as bus transfer from the station to Lodge, with open time for golf, tennis, swimming, horseback riding or motoring. Cost per person: without private bath, single \$52.75, double \$45.25; with private bath, single \$58.75, double \$54.25.
- TOUR No. 34** —**Four day visit**—Covers American Plan accommodation at Jasper Park Lodge, the General Drive, Mount Edith Cavell Drive, Miette Hot Springs Drive, as well as bus transfer from the station to Lodge, with additional open time for golf, tennis, boating, horseback riding, swimming, etc. Cost per person: without private bath, single \$66.25, double \$56.25; with private bath, single \$74.25, double \$68.25.



## TOURS NO. 41-44 INCLUSIVE

For the benefit of guests arriving at Jasper Park Lodge via motor bus from Lake Louise, Banff, or Calgary, and departing via trains for the East, the West, or Prince Rupert.

- TOUR No. 41—One day visit**—Covers American Plan accommodation at Jasper Park Lodge, the Mount Edith Cavell Drive, as well as bus transfer from the Lodge to station. It also permits open time for golf, tennis, horseback riding, swimming, etc. Cost per person: without private bath, single \$18.00, double \$15.50; with private bath, single \$20.00, double \$18.50.
- TOUR No. 42—Two day visit**—Covers American Plan accommodation at Jasper Park Lodge, the General Drive, Mount Edith Cavell Drive, and the Miette Hot Springs Drive, as well as bus transfer from Lodge to station. It also permits open time for golf, tennis, horseback riding, swimming, etc. Cost per person: without private bath, single \$41.50, double \$36.50; with private bath, single \$45.50, double \$42.50.
- TOUR No. 43—Three day visit**—Covers American Plan accommodation at Jasper Park Lodge, the General Drive, Mount Edith Cavell Drive, and Miette Hot Springs Drive, as well as bus transfer from Lodge to station, with open time for golf, tennis, swimming, horseback riding, etc. Cost per person: without private bath, single \$55.00, double \$47.50; with private bath, single \$61.00, double \$56.50.
- TOUR No. 44—Four day visit**—Covers American Plan accommodation at Jasper Park Lodge, the General Drive, Mount Edith Cavell Drive, and Miette Hot Springs Drive, as well as bus transfer from Lodge to station, with additional open time for golf, tennis, swimming, horseback riding, etc. Cost per person: without private bath, single \$68.50, double \$58.50; with private bath, single \$76.50, double \$70.50.

### MOTOR COACH SERVICE OVER THE COLUMBIA ICEFIELD HIGHWAY BETWEEN JASPER and LAKE LOUISE, BANFF and CALGARY

Roomy, modern, sightseeing coaches, operated by Jasper Park Lodge, leave the Lodge daily from June 15th to September 15th, for the Columbia Icefield, where connection is made with services to Lake Louise, Banff and Calgary.

#### SCHEDULE

#### Between Jasper Park Lodge and Columbia Icefield

#### OPERATED BY JASPER PARK LODGE MOTOR TRANSPORTATION DEPARTMENT

*Buses will call at Jasper Station to pick up passengers who are not guests at the Lodge.*

Read Down		Read Up	
9.00 a.m.	Lv. . . . . Jasper Park Lodge . . .	Ar.	5.45 p.m.
9.15 a.m.	Lv. . . . . Jasper . . . . .	Ar.	5.30 p.m.
12.30 p.m.	Ar. . . . . Columbia Icefield . . .	Lv.	2.30 p.m.

Between Columbia Icefield, Lake Louise, Banff and Calgary the service is provided by Rocky Mountain Tours and Transport Company and the Brewster Transport Company—Schedules are as follows:

#### ROCKY MOUNTAIN TOURS AND TRANSPORT COMPANY

2.00 p.m.	Lv. . . . . Columbia Icefield . . .	Ar.	12.30 p.m.
6.00 p.m.	Ar. . . . . Lake Louise . . . . .	Lv.	8.30 a.m.
7.00 p.m.	Lv. . . . . Lake Louise . . . . .	Ar.	8.30 a.m.
8.30 p.m.	Ar. . . . . Banff . . . . .	Lv.	7.00 a.m.
8.00 a.m.	Lv. . . . . Banff . . . . .	Ar.	5.30 p.m.
11.00 a.m.	Ar. . . . . Calgary . . . . .	Lv.	2.30 p.m.

#### BREWSTER TRANSPORT COMPANY

2.30 p.m.	Lv. . . . . Columbia Icefield . . .	Ar.	12.00 noon
6.00 p.m.	Ar. . . . . Lake Louise . . . . .	Lv.	8.30 a.m.
7.30 p.m.	Lv. . . . . Lake Louise . . . . .	Ar.	8.30 a.m.
9.00 p.m.	Ar. . . . . Banff . . . . .	Lv.	7.00 a.m.
8.00 a.m.	Lv. . . . . Banff . . . . .	Ar.	5.30 p.m.
11.00 a.m.	Ar. . . . . Calgary . . . . .	Lv.	2.30 p.m.

#### FARES

Between	Bus	1-5 Passengers	Private Car 6 Passengers
Jasper Park Lodge or Jasper and Columbia Icefield . . . . . One way . . . . .	\$ 6.25	\$ 31.25	\$ 37.50
“ “ . . . . . Round trip . . . . .	10.00	50.00	60.00
Lake Louise . . . . . One way . . . . .	13.50	67.50	81.00
“ “ . . . . . Round trip . . . . .	22.50	112.50	135.00
Banff . . . . . One way . . . . .	18.00	90.00	108.00
“ “ . . . . . Round trip . . . . .	27.50	137.50	165.00
Calgary . . . . . One way . . . . .	20.95	130.00	158.00
“ “ . . . . . Round trip . . . . .	32.10	187.50	225.00

Children under 12 years, half fare.

The above fares do not include meals at any point en route.

**Baggage Transfer via Motor Services**—The foregoing fares include the free transfer of a reasonable quantity of hand baggage; they do not include the transfer of trunks or other heavy baggage, charges for which (between Jasper Park Lodge or Jasper, and the following points) are: Columbia Icefield—\$1.25 per piece each way, Lake Louise—\$3.00 per piece each way, Banff—\$4.00 per piece each way.

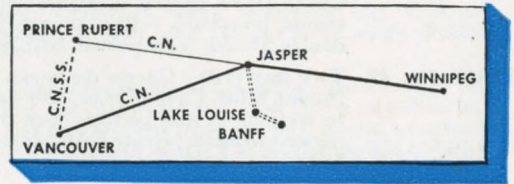


## PASSENGERS MAY INCLUDE BANFF AND LAKE LOUISE IN THEIR ITINERARY ENROUTE TO, FROM OR THROUGH JASPER

In order that passengers visiting the Canadian Rockies may enjoy the scenic features of both Jasper National Park and Banff National Park, the Canadian National Railways have made arrangements whereby motor transportation between Jasper and Banff and/or Lake Louise over the famous Columbia Icefield Highway may be purchased when railway transportation is secured, thus enabling passengers to complete transportation arrangements (both rail and motor) for the entire trip at originating point.

The motor side trip over the Columbia Icefield Highway from Jasper to Lake Louise and Banff and return may be purchased in connection with your Canadian National ticket reading to or through Jasper.

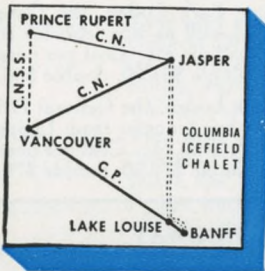
Or the motor trip may be incorporated in a circle tour of the principal resorts of the Canadian Rockies, as outlined below:



### EASTBOUND FROM OR VIA VANCOUVER

Canadian National Railways to Jasper direct or via C.N.S.S. and Prince Rupert (at slight additional cost to cover meals and berth on steamer)—motor transport over Columbia Icefield Highway to Banff or Lake Louise, thence returning via Canadian Pacific Railway to Vancouver, permitting stopovers as desired enroute.

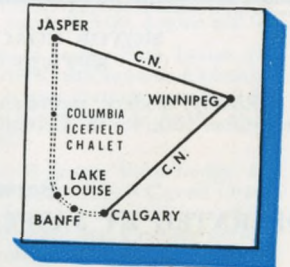
*This trip is also available in the opposite direction.*



### WESTBOUND FROM OR VIA WINNIPEG

Canadian National Railways to Jasper—motor transport over Columbia Icefield Highway to Calgary—thence Canadian National Railways to Winnipeg.

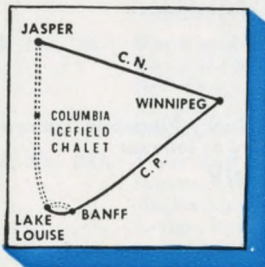
*This trip is also available in the opposite direction.*



### WESTBOUND FROM OR VIA WINNIPEG

Canadian National Railways to Jasper—motor transport over Columbia Icefield Highway to Lake Louise or Banff—thence Canadian Pacific Railway to Winnipeg.

*This trip is also available in the opposite direction.*



### TO AND FROM THE PACIFIC COAST VIA JASPER, BANFF, LAKE LOUISE

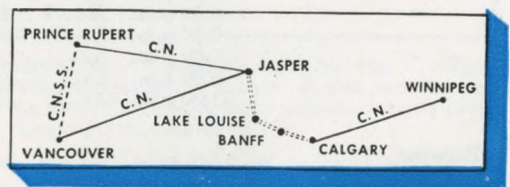
Passengers holding tickets to or from the Pacific Coast via Canadian National Railways may include the three mountain resorts of Jasper, Banff and Lake Louise, as follows:

#### Eastbound From or Via Vancouver

Canadian National Railways to Jasper direct or via C.N.S.S. and Prince Rupert—at slight additional cost to cover meals and berth on steamer—motor transport to Calgary via Lake Louise and Banff, thence Canadian National Railways.

#### Westbound From or Via Winnipeg

Canadian National Railways to Calgary—motor transport to Jasper via Banff and Lake Louise—thence Canadian National Railways to Vancouver direct, or via Prince Rupert and C.N.S.S. (at slight additional cost to cover meals and berth on steamer).



### BAGGAGE

HAND BAGGAGE will be carried free of charge on motor services between Jasper Park Lodge or Jasper, and Lake Louise, Banff or Calgary. TRUNKS and OTHER BAGGAGE will be checked by rail to the extent covered by rail transportation held by passengers. TRUNKS AND OTHER HEAVY BAGGAGE will be checked via truck service at regular tariff rates.

**NOTE:**—Alternative routes via Prince Rupert will be dependent on the operation of C.N.S.S. service between Prince Rupert and Vancouver.



# ACCOMMODATIONS IN JASPER NATIONAL PARK

## ASTORIA HOTEL, Jasper

Open throughout the year. Rates: European Plan from \$3.00 per day, single, and up; from \$4.00 per day double and up. Rooms with and without bath. Lunch counter and dining room service.

## ATHABASCA HOTEL, Jasper

Open throughout the year. Rooms with and without bath. Rates: European Plan, from \$3.50 per day, single, and up; from \$5.00 per day, double, and up. Dining room service.

## BECKER'S BUNGALOWS

Four miles from Jasper on the Columbia Icefield Highway. Open May 15 to Oct. 15. Accommodation 34 Cabins. Rates: 2-4 persons, \$6.00 to \$12.50 per day, each additional person \$1.50 per day. Dining room.

## BECKER'S BUNGALOW RESORT

At Miette Hot Springs. Open May 24 to Sept. 15. Ten Deluxe modern type cabins — 2-6 persons, \$7.50 to \$10.50 per Cabin. Ten Tent Cabins — 2 persons, \$3.50. Lunch counter and dining room service.

## CIRCLE M RANCH, Entrance, Alta.

Thirty-four miles east of Jasper on Jasper-Edmonton Highway. Accommodation eight persons. Rates: (American Plan) \$70.00 per week; 4 persons \$60.00 per week; 8 persons \$50.00 per week. Rates include horses and services of a guide.

## COLUMBIA ICEFIELD CHALET

Open June 15 to Sept. 15. Rates: European Plan, from \$3.50 per day, single; from \$5.50 per day, double. Located at the foot of the Athabaska Glacier, facing a panorama of mountains and glaciers, this is an ideal stopover point on the Columbia Icefield Highway for foot or snowmobile over the Glacier.

## JASPER PARK LODGE (American Plan)

See page 52 for rates and accommodation.

## KIEFER'S ALPINE VILLAGE

One mile from Jasper on the Columbia Icefield Highway. Accommodation 16 Cabins. Open May 15 to Oct. 1. Rates: \$6.00 and up for 2 persons.

## MALIGNE LAKE CHALET

(Operated by Fred Brewster's Rocky Mountain Camps Ltd.)

Thirty-two miles from Jasper, on the lake shore at the outlet to Maligne River. Open June 15 to Sept. 10. Rates: per person, American Plan, log cabin room, \$14.00 per day; \$93.00 per week. Heated canvas houses, \$12.00 per day; \$80.00 per week.

## PINE BUNGALOW CABINS

One mile east of Jasper. Open May 24 to Sept. 20. Accommodation: 50 Cabins. Rates: \$5.00 per cabin for 2 persons and up, with or without house-keeping facilities.

## PYRAMID HOTEL, Jasper

Open throughout the year. Rooms without bath. Rates: European Plan, \$2.50 and up.

## PYRAMID PINES CHALET

On the shores of Pyramid Lake, 3½ miles from Jasper. Accommodation 20 persons. Rates: American Plan, \$6.00 per day.

## RAINBOW LODGE, Maligne Lake

Thirty-two miles from Jasper. Summer season only. Accommodation rate: \$10.00 per day, American Plan. Daily trips to Maligne Lake and return, \$20.00 per person.

## ROCHE BONHOMME BUNGALOWS

On northern outskirts of Jasper town. Open April 1 to Oct. 31. Rates: Single \$6.00 and up; Double \$8.00 and up.

## SHOVEL PASS CAMP

(Operated by Fred Brewster's Rocky Mountain Camps Ltd.)

Accommodation 8 persons. Floored framed tents. Rates: per person, American Plan, \$8.00 per day.

## SUNWAPTA FALLS BUNGALOW CAMP

Thirty-four miles from Jasper on Columbia Icefield Highway. Accommodation 50 persons. Open June 1 to Sept. 30. Rates: for 2 persons, \$4.00 per day and up; for 4 persons, \$6.50 per day and up. Dining room service and coffee bar.

## TEKARRA LODGE

One half mile from Jasper on Columbia Icefield Highway. 42 fully modern cabins. Rates: \$6.50 for two persons per day and up. Chalet rooms: \$3.50 for 1 person, \$5.00 and \$7.00 for 2 persons. Open May 15 to Sept. 15. Dining room.

## TONQUIN VALLEY CAMP

(Operated by Fred Brewster's Rocky Mountain Camps Ltd.)

On the shore of Amethyst Lakes, 20 miles from Jasper by motor-car and ten miles by saddle-horse. Open July 1 to Aug. 31. Rates: per person, American Plan, \$12.00 per day, \$80.00 per week.

## WELLS BUNGALOWS, ATHABASKA FALLS

20 miles from Jasper on Columbia Icefield Highway. Eleven log cabins and 3 tent cabins. Accommodation 46. Tent cabin rates: \$3.00 per day for 2 persons. Log cabins: \$5.00 per day for 2 persons, \$7.00 per day for 4 persons.

## Y.M.C.A. CAMP, Lake Edith

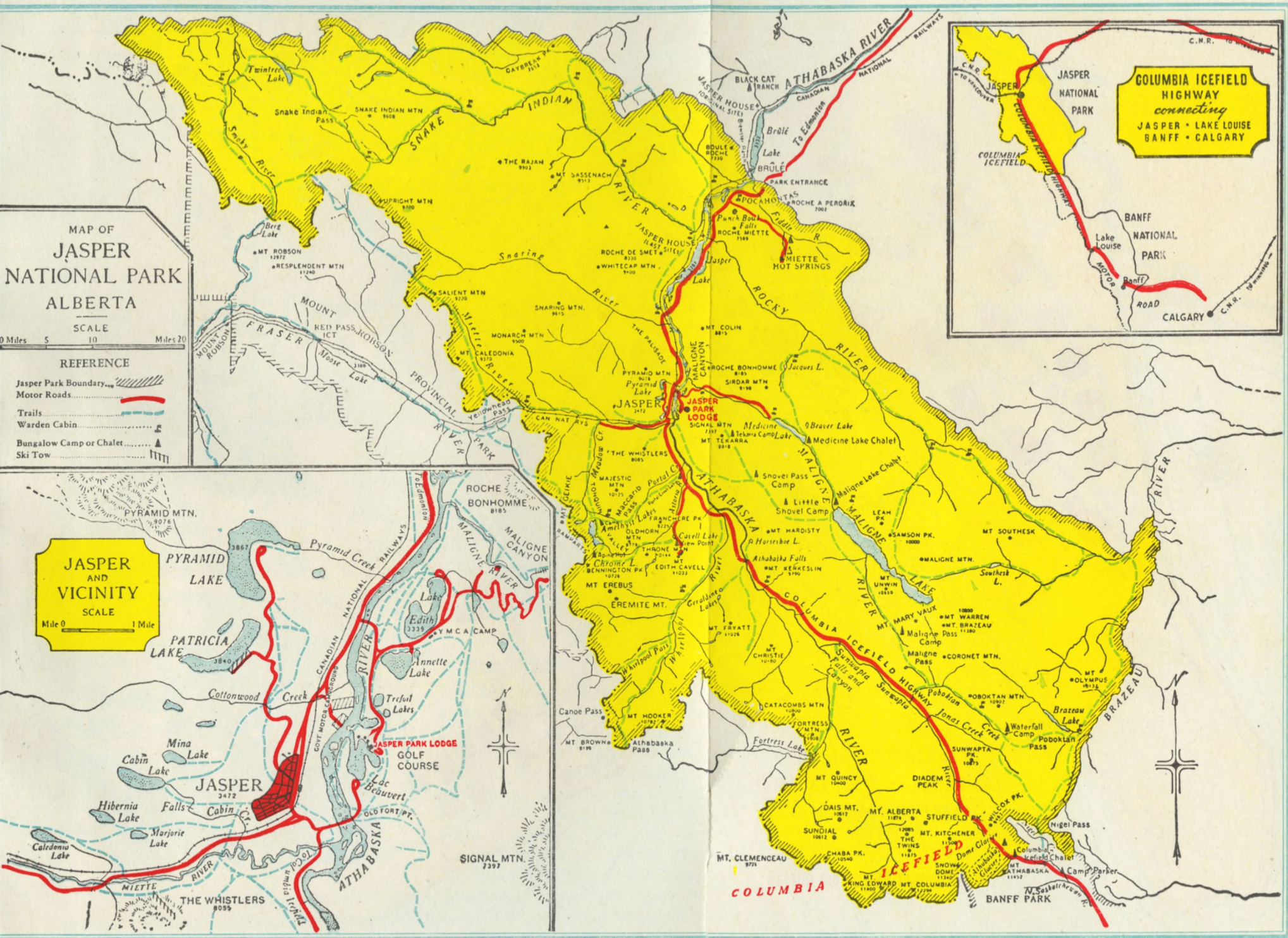
Five miles from Jasper on shore of Lake Edith. Transfer service available from station to Camp. Open June 15 to Sept. 1. Rates: Cottage rooms \$7.00 per day; Chalet rooms \$6.50 per day; Tent rooms \$5.75 per day, American Plan. Special rates for groups of over 20 persons. Accommodation for 75 persons.

NOTE:—The Canadian National Railways, in furnishing the above list of rates and other information, assumes no responsibility as to its accuracy.









**MAP OF JASPER NATIONAL PARK ALBERTA**

SCALE  
0 Miles 5 10 Miles 20

**REFERENCE**

- Jasper Park Boundary
- Motor Roads
- Trails
- Warden Cabin
- Bungalow Camp or Chalet
- Ski Tow

**JASPER AND VICINITY**

SCALE  
0 1 Mile

**COLUMBIA ICEFIELD HIGHWAY**  
connecting  
JASPER • LAKE LOUISE  
BANFF • CALGARY



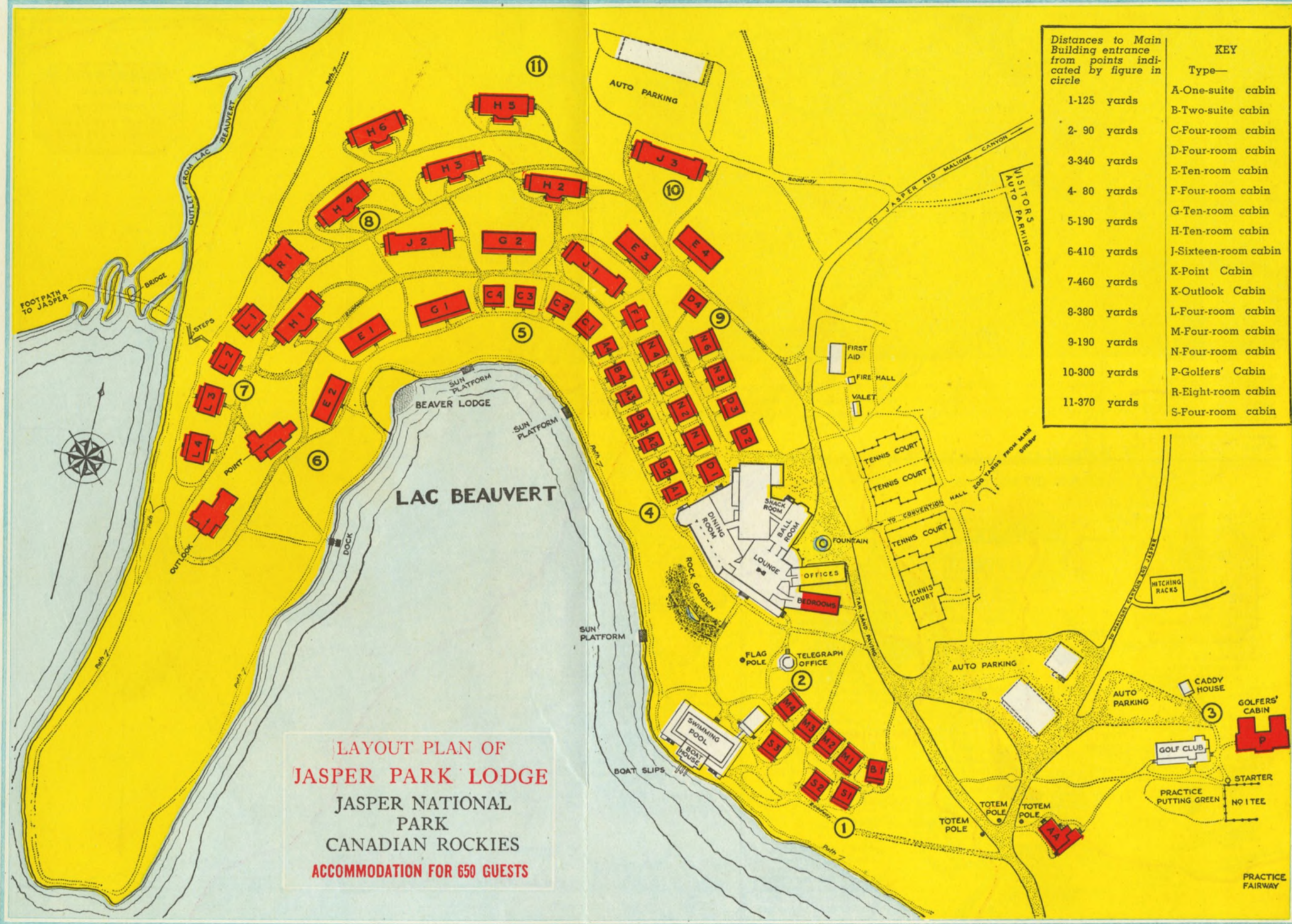
LAYOUT PLAN OF  
**JASPER PARK LODGE**  
 JASPER NATIONAL  
 PARK  
 CANADIAN ROCKIES  
 ACCOMMODATION FOR 650 GUESTS

Distances to Main  
 Building entrance  
 from points indi-  
 cated by figure in  
 circle

- 1-125 yards
- 2- 90 yards
- 3-340 yards
- 4- 80 yards
- 5-190 yards
- 6-410 yards
- 7-460 yards
- 8-380 yards
- 9-190 yards
- 10-300 yards
- 11-370 yards

KEY

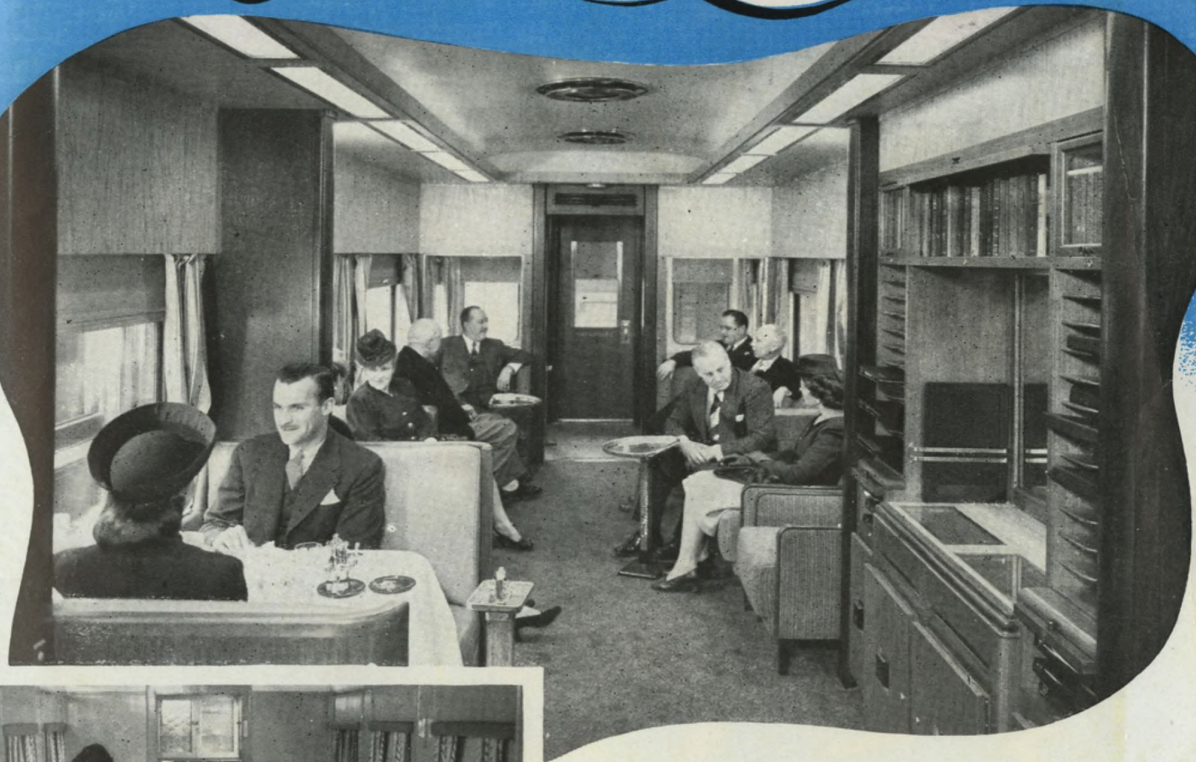
- Type—
- A-One-suite cabin
  - B-Two-suite cabin
  - C-Four-room cabin
  - D-Four-room cabin
  - E-Ten-room cabin
  - F-Four-room cabin
  - G-Ten-room cabin
  - H-Ten-room cabin
  - J-Sixteen-room cabin
  - K-Point Cabin
  - K-Outlook Cabin
  - L-Four-room cabin
  - M-Four-room cabin
  - N-Four-room cabin
  - P-Golfers' Cabin
  - R-Eight-room cabin
  - S-Four-room cabin





TRAVEL IN STYLE ON

# "The Continental Limited"



The Canadian National, largest railway system in North America, is the only one serving all the ten provinces of Canada. Its lines run all the way from St. John's, Newfoundland, to Vancouver and Prince Rupert on the Pacific, and into 11 of the United States. Its famous trains include "The International Limited", operating between Chicago, Toronto and Montreal, and "The Continental Limited", which runs between Montreal, Toronto and Vancouver, by way of Winnipeg, Saskatoon and Edmonton. It is your Jasper train, for Jasper is on the main line of the C.N.R. Its equipment is the last word in convenience and comfort, whether it be in sleeping car, lounge or dining car. Canadian National standards in food and service are high, too. May we have the pleasure of serving you?



# JASPER

NATIONAL PARK • CANADIAN ROCKIES

